

Jersey Labour Market at December 2007

This report presents information on employment in Jersey at the end of December 2007, bringing together the results of the Manpower Survey (private sector)¹ and the report on public sector manpower produced by the States Treasury².

Headlines

The principal features of the Jersey Labour Market at December 2007 were³:

- **total employment was 53,040, about 1,460 higher (3%) than a year previously and representing the highest December figure for at least a decade;**
- the **overall increase** in total employment in the twelve months to December 2007 was made up of a **net increase of 1,390 in the private sector** and a **net increase of 70 in the public sector;**
- of total employment: **46,410 (87%) were in the private sector** (including the States Trading Committees) and **6,630 (13%) were in the public sector**²;
- in the private sector, the number of **locally qualified staff was 920 higher** than in December 2006, the number of **j-category employees was up by 90** (more than half of the increase from the Finance sector), whilst the number of **non-locally qualified staff increased by 380** over the same period;
- the **Finance sector accounted for more than half of the overall net annual increase in private sector employment**, up by 730 on a year previously; **total employment in the Finance sector**, at over 13,000 in December 2007, was the highest recorded for the sector since the inception of the Manpower Survey;
- some 2,270 people were engaged in **one-person businesses**, up by 160 on December 2006;
- **registered unemployment** stood at 320 in December 2007, some 100 lower than the previous December, and representing the lowest monthly figure for four and a half years.

¹ The Manpower Survey is analysed by the States of Jersey Statistics Unit on behalf of the Economic Development Department (Note 1).

² For more information see Report on Public Sector Manpower, December 2007: States Treasury & Resources.

³ Throughout this report employment, registered unemployment and vacancy numbers are rounded independently to the nearest 10.

Overview: Total Employment

The total number in employment in Jersey in December 2007, either full-time or part-time, was 53,040 which is 1,460 (2.8%) more than in December 2006.

The private sector, including States Trading Committees (see Note 2) and single-person enterprises, employed 46,410 people; this total is 1,390 (3.1%) more than a year earlier. The public sector headcount was reported at 6,630, which is 70 (1.1%) more than a year earlier.

Table 1: Employment (headcount) in the private and public sectors⁴.

| | | <u>Private</u> | <u>Public</u> | <u>Total</u> |
|-------------|-----|----------------|---------------|---------------|
| 1996 | Jun | 45,940 | 5,850 | 51,800 |
| | Dec | 41,170 | 5,810 | 46,990 |
| 1997 | Jun | 47,010 | 5,970 | 52,970 |
| | Dec | 43,800 | 5,840 | 49,640 |
| 1998 | Jun | 49,480 | 5,970 | 55,450 |
| | Dec | 44,640 | 5,970 | 50,610 |
| 1999 | Jun | 48,770 | 6,170 | 54,940 |
| | Dec | 43,610 | 6,010 | 49,620 |
| 2000 | Jun | 47,760 | 6,110 | 53,870 |
| | Dec | 43,810 | 5,990 | 49,810 |
| 2001 | Jun | 47,560 | 6,200 | 53,760 |
| | Dec | 43,960 | 6,120 | 50,090 |
| 2002 | Jun | 47,390 | 6,250 | 53,640 |
| | Dec | 43,960 | 6,310 | 50,270 |
| 2003 | Jun | 46,790 | 6,440 | 53,230 |
| | Dec | 43,210 | 6,410 | 49,620 |
| 2004 | Jun | 45,830 | 6,590 | 52,420 |
| | Dec | 43,130 | 6,510 | 49,640 |
| 2005 | Jun | 46,760 | 6,530 | 53,280 |
| | Dec | 43,840 | 6,430 | 50,280 |
| 2006 | Jun | 47,390 | 6,540 | 53,930 |
| | Dec | 45,020 | 6,560 | 51,580 |
| 2007 | Jun | 48,410 | 6,730 | 55,140 |
| | Dec | 46,410 | 6,630 | 53,040 |

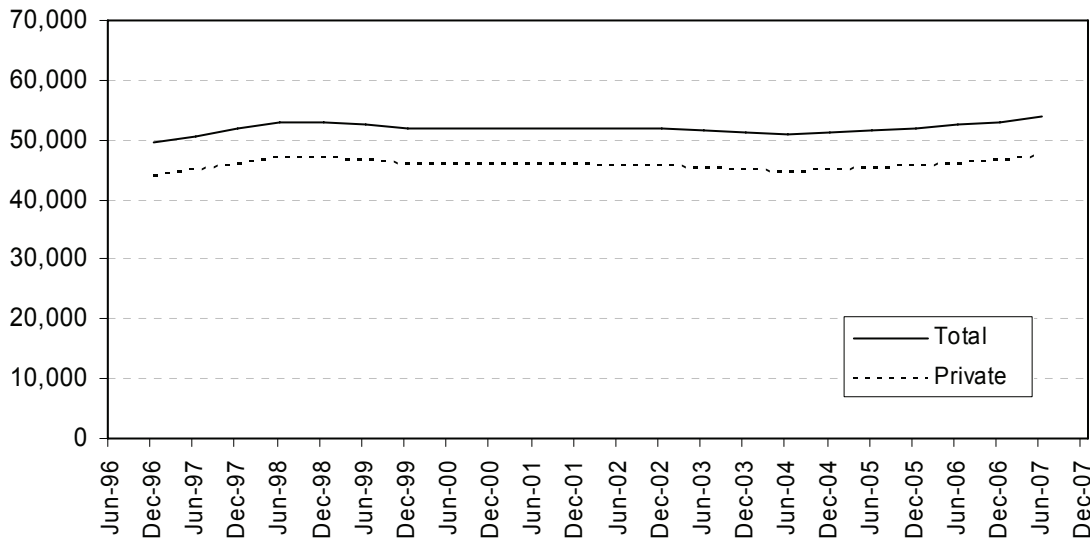
Numbers are rounded independently to the nearest 10.

⁴ The public sector headcount figure reported for December 2007 is based on the new States of Jersey reporting system (see Note 7).

The total number of people in employment rose rapidly from 51,800 at June 1996 to a peak of more than 55,000 at June 1998 (table 1). Total employment in December 2007 represents the highest December figure for at least a decade and follows June 2007 which saw the highest June figure for nine years.

Figure 1 shows the trend in total and private sector employment since 1996 (see Note 3). The figure indicates that total and private sector employment in Jersey was substantially constant between 1999 and December 2002, decreased during 2003 and 2004, and has seen an ongoing increase since 2005.

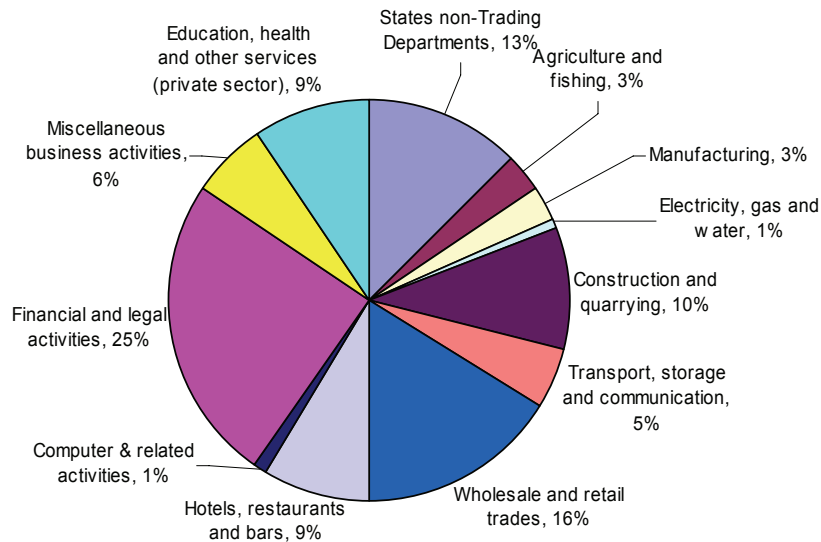
Figure 1 - Total and Private sector Headcount
(12-month moving average)



Sectoral Breakdown

Figure 2 shows the sectoral breakdown of employment at December 2007:

Figure 2 - Jersey employment December 2007 headcount



- a quarter (25%) of the total were engaged in the Finance sector (13,090)
- nearly a sixth (16%) were in Wholesale and retail trades (8,590);
- the public sector (excluding Trading Committees) accounted for around one in eight (13%) of Jersey's labour force.

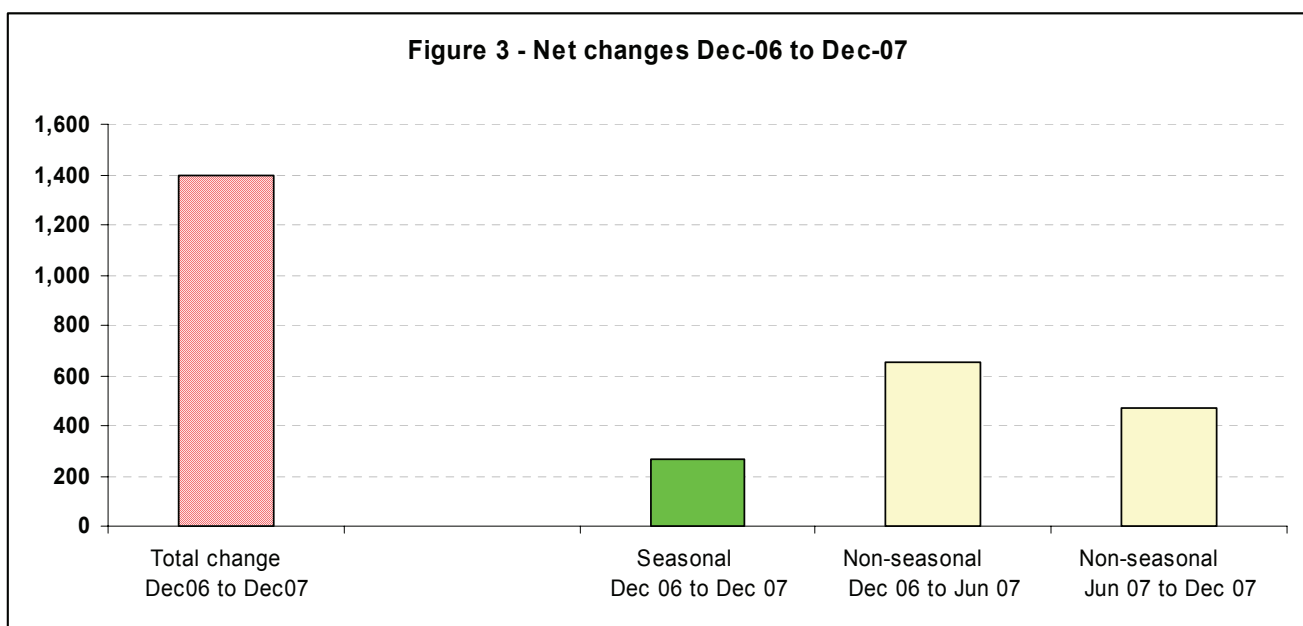
Overview: Private sector

The number of people employed in Jersey businesses in December 2007 was 46,410, some 1,390 more than a year earlier, and comprised increases of 1,230 full-time and 170 part-time employees. More than 94% of the net increase in employment was for *permanent* full-time staff.

The overall annual rise of 3.1% is the largest December twelve-month increase in private sector employment for ten years.

The latest net increase of 1,390 on an annual basis consisted of (see Figure 3):

- an increase of 650 jobs in the predominantly non-seasonal sectors in the period December 2006 to June 2007;
- an increase of 470 in the predominantly non-seasonal sectors between June 2007 and December 2007;
- an increase of 270 in seasonal industries compared to the previous December.



The net increase in employment of 650 in the non-seasonal sectors during the first six months of 2007, apparent in Figure 3, was driven by increases in Finance (up 290) and private sector Education, health and other services (up 270).

The net increase of 470 staff in the last six months of 2007 for the non-seasonal sectors was primarily due to a further increase of 440 in the Finance sector and of 260 in the fulfilment area of Wholesale & retail. A net decline for the remainder of this category is indicative of residual seasonal influences within some sectors, e.g. car hire in Miscellaneous business activities and sporting and entertainment activities in Education, health and other services.

In the twelve months to December 2007, Finance recorded the largest increase of any sector (up by 730 employees, corresponding to a 6% increase). Other notable annual increases occurred in private sector Education, health and other services (up 180 employees, 4%) and Miscellaneous business activities (up 300 employees, 10%).

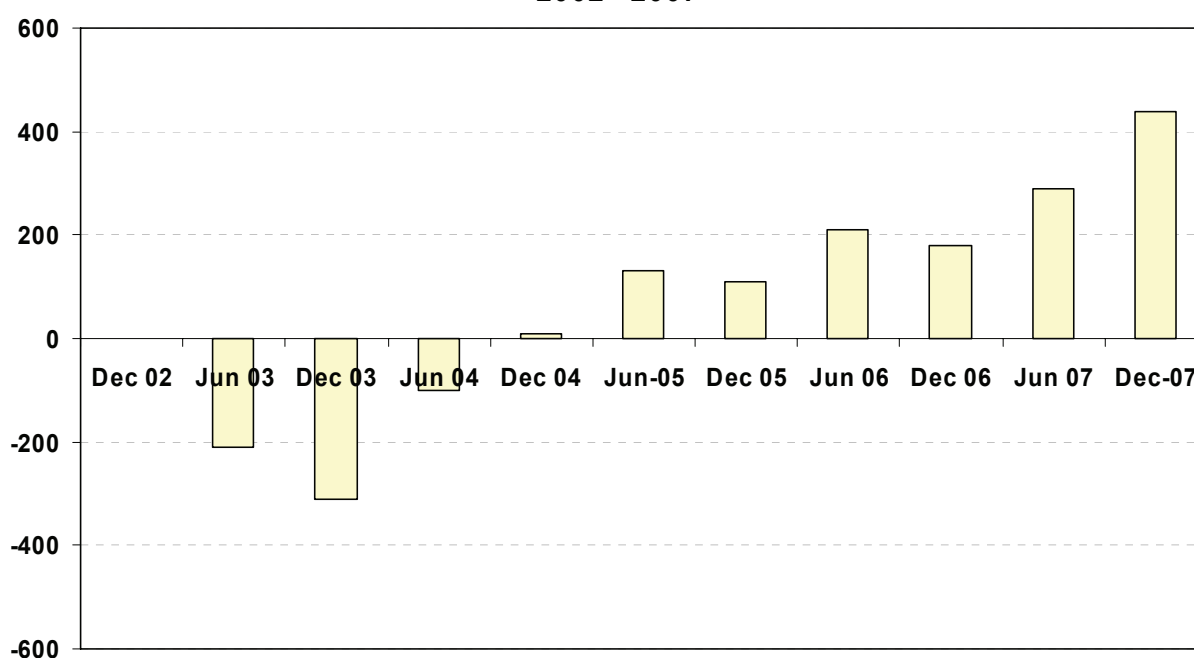
The Manufacturing and Wholesale and retail sectors both recorded small net decreases on an annual basis. Within the Wholesale and retail sector, a total of 820 employees were employed in fulfilment activities in December 2007, an increase of 260 on the previous June but down by some 80 on December 2006, reflecting the seasonal nature of this sub-sector.

During the last six months of 2007, the Finance sector showed an increase of 440 employees (Table 2), following the increase of 290 during the first six months of 2007 (see Figure 4). The most recent rise was driven by increased employment in the banking sub-sector⁵. In December 2007, total employment in the Finance sector stood at 13,090, the highest figure recorded for this sector since the inception of the Manpower Survey.

Table 2: Employment in the sub-sectors of Financial services: Jun-03 to Dec-07.

| | Jun-03 | Dec-03 | Jun-04 | Dec-04 | Jun-05 | Dec-05 | Jun-06 | Dec-06 | Jun-07 | Dec-07 |
|------------------|---------------|---------------|---------------|---------------|---------------|---------------|---------------|---------------|---------------|---------------|
| Banking | 5,940 | 5,660 | 5,550 | 5,570 | 5,570 | 5,460 | 5,510 | 5,910 | 5,940 | 6,200 |
| Trust & Co Admin | 2,510 | 2,480 | 2,480 | 2,430 | 2,470 | 2,560 | 2,660 | 2,360 | 2,500 | 2,630 |
| Legal | 2,010 | 2,030 | 2,050 | 2,050 | 2,150 | 2,250 | 2,300 | 2,320 | 2,390 | 2,500 |
| Accountancy | 780 | 730 | 720 | 780 | 790 | 810 | 830 | 840 | 880 | 920 |
| Other | 900 | 930 | 920 | 900 | 900 | 900 | 880 | 930 | 950 | 850 |
| Total | 12,130 | 11,820 | 11,720 | 11,730 | 11,860 | 11,970 | 12,180 | 12,360 | 12,650 | 13,090 |

**Figure 4 - Six-month changes in Finance sector employment
2002 - 2007**



⁵ Some of the increase shown for banking in Table 2 between June and December 2007 was the result of mergers and take overs of companies previously predominantly operating separately in other sub-sectors.

Employment excluding one-person businesses⁶

Excluding one-person enterprises, there were a total of 3,330 active undertakings in Jersey in December 2007. The number in *full-time* employment in such undertakings increased by 1,170 over the twelve months to December 2007, to stand at 36,640, an increase of 3.3%. The number of staff in *part-time* employment also increased slightly, by 0.8% (60) to 7,500.

On a shorter time-frame, between June 2007 and December 2007 full-time employment decreased by almost 1,800 and part-time employment decreased by 300. These shorter-term changes are heavily influenced by seasonal factors, as can be seen from Figure 5a. The underlying trend, excluding seasonal and other short-term variations, is shown by Figure 5b (see Note 3); twelve-month percentage changes are shown in Figure 6.

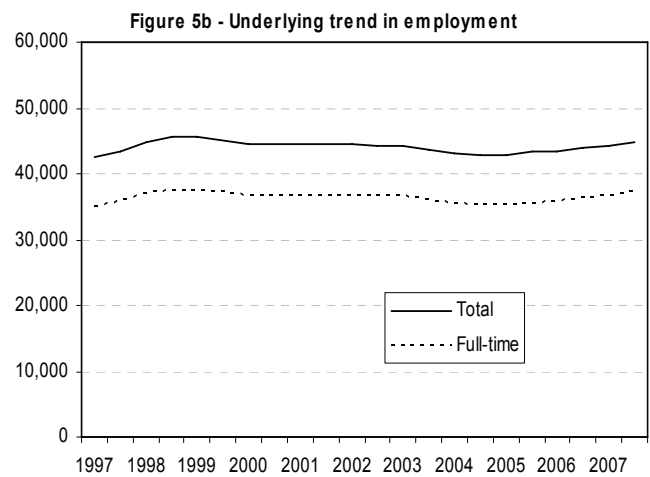
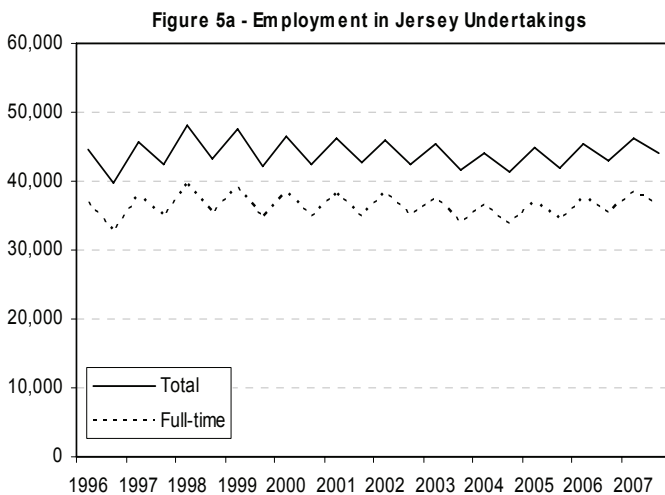
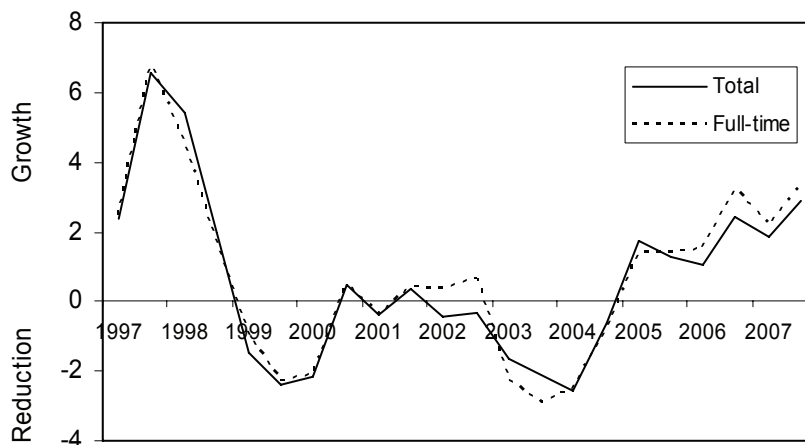


Figure 6 - Twelve month percentage changes in private sector employment



Employment in one-person businesses

In December 2007 there were 2,270 reported single-person undertakings, about 160 more than a year earlier. Single-person undertakings were not being consistently recorded prior to 2000, so detailed figures excluding single-person undertakings are presented in Appendix 1; those including single-person undertakings are shown in Appendix 2.

⁶ These data are shown in order to obtain a longer term view of employment in Jersey since one-person undertakings were not consistently reported before 2000.

Residential qualifications

Overall, 83% of people employed in Jersey in December 2007 were locally qualified (as defined by the Regulation of Undertakings and Development Law, see Note 4), more than 3% were j-category and 13% (fewer than one in seven) were not locally qualified.

Of the 46,410 people employed in the private sector in December 2007, about five out of six (83%) were locally qualified. A further 2% (990 staff) were qualified as j-category. The remaining 15% (7,020), about one in six of all private sector staff, were not locally qualified.

The number of locally qualified staff in the private sector in December 2007 was 920 more than in December 2006. Over the same period, the number of j-category employees in the private sector increased by 90 (Figure 8), more than half of the increase occurring in the Finance sector. The number of private sector staff who were not locally qualified was 380 higher than in December 2006, a quarter of this increase being seasonal or temporary staff.

Figure 8 - Private sector j-category employees

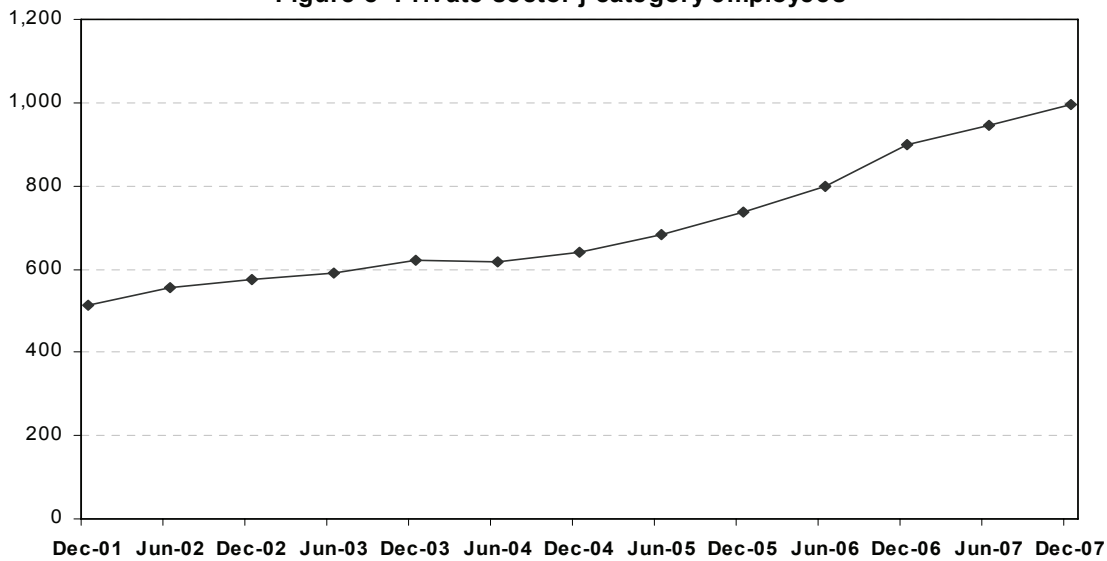
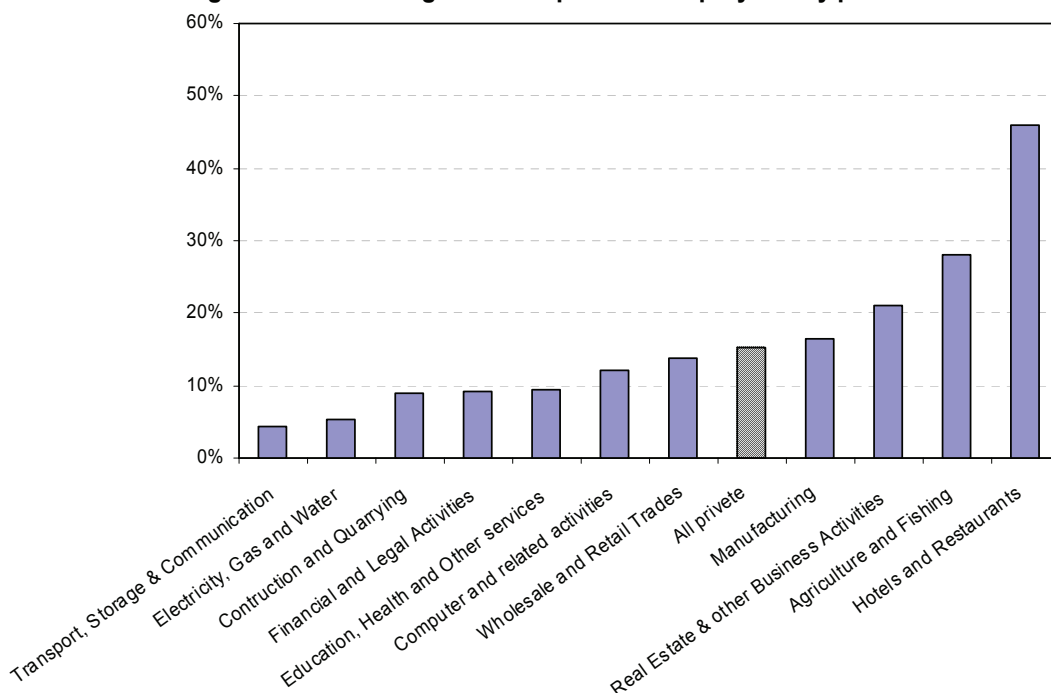


Figure 9 - Percentage of non-qualified employees by private sector



Within the private sector in December 2007, the highest proportions of non-qualified employees (excluding j-category) were in Hotel, restaurants & bars (46%) and Agriculture & fishing (28%); whilst the Transport, storage & communication sector had the lowest proportion at 4% (see Figure 9). About 9% of employees in the Finance and Construction sectors were non-locally qualified.

The number of j-category staff in the public sector in December 2007 was 830, representing about one in eight public sector employees, and up by 120 on December 2006. Almost three-quarters of this net increase occurred in the Health and Social Services Department.

Employment by nationality

Utilising data from the Department of Social Security (DSS) it is possible to get an insight into the make up of Jersey's workforce by nationality⁷. However, in using these data it is important to understand a number of key points.

Firstly, the nationality data compiled by DSS is based on contributions (i.e. the number of actual contributions paid in a given quarter) paid on behalf of contributors (employees only, excluding the self-employed and non-employed contributors). The number of contributions from unique contributors will differ from the number employed primarily because the data on social security data refer to contributions paid *over the entire quarter*, whilst the employment data is a point in time estimate at either 30 June or 31 December each year. As a result of this timing difference it is not possible to undertake a direct comparison of social security contributions and numbers in employment as the former will always be higher by definition⁸.

Furthermore, nationality recorded by DSS is self-reported and historically has not been a key variable for social security purposes. As a result it is not possible to separate Jersey and United Kingdom nationals. Since these two groups are the largest two nationalities working in Jersey, the fact that they are combined does limit the usefulness of the data in examining migration trends.

Table 3 provides a breakdown of contributors by nationality. The ongoing increase in total contributors throughout 2006 and 2007, as well as the seasonality, is clearly evident.

Table 3: Number of unique Social Security contributors by nationality

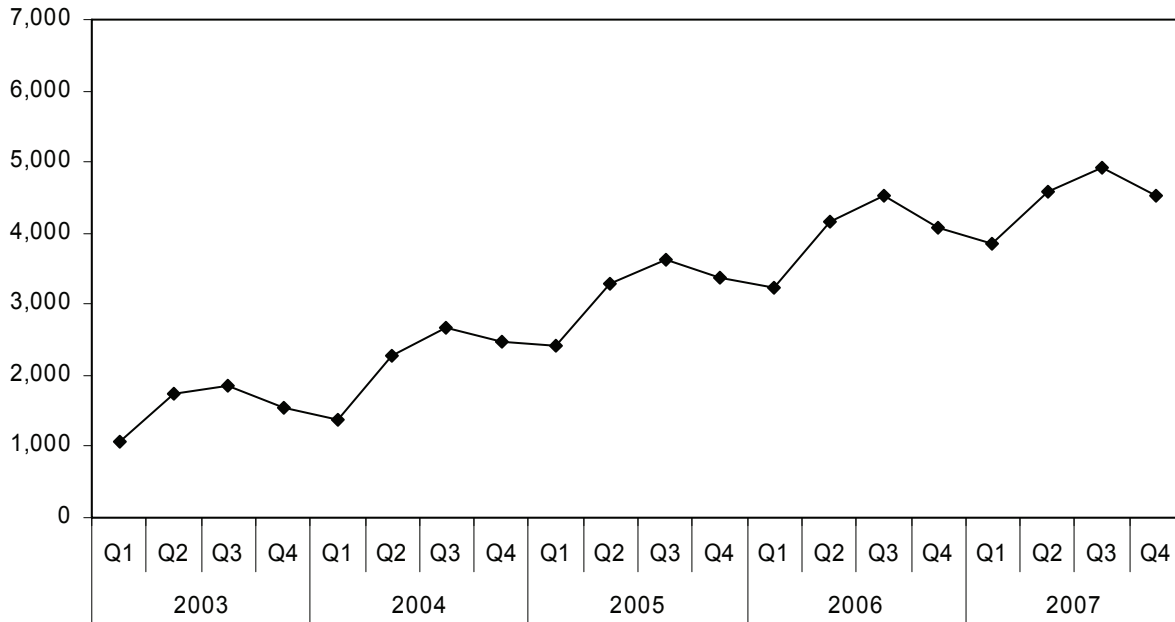
| | 2005 | | | | 2006 | | | | 2007 | | | |
|------------------------|---------------|---------------|---------------|---------------|---------------|---------------|---------------|---------------|---------------|---------------|---------------|---------------|
| | Q1 | Q2 | Q3 | Q4 | Q1 | Q2 | Q3 | Q4 | Q1 | Q2 | Q3 | Q4 |
| UK/Jersey | 35,300 | 36,320 | 37,410 | 36,150 | 35,600 | 36,500 | 37,840 | 36,980 | 36,110 | 36,950 | 38,400 | 37,260 |
| Portuguese | 6,070 | 6,520 | 6,500 | 6,320 | 6,020 | 6,510 | 6,600 | 6,420 | 6,190 | 6,650 | 6,760 | 6,700 |
| Accession 8 | 2,410 | 3,290 | 3,610 | 3,380 | 3,240 | 4,150 | 4,530 | 4,090 | 3,850 | 4,590 | 4,910 | 4,530 |
| <i>of which Polish</i> | <i>2,340</i> | <i>3,180</i> | <i>3,500</i> | <i>3,270</i> | <i>3,130</i> | <i>3,980</i> | <i>4,320</i> | <i>3,890</i> | <i>3,660</i> | <i>4,330</i> | <i>4,620</i> | <i>4,280</i> |
| Other | 6,310 | 6,620 | 6,640 | 6,390 | 6,030 | 6,250 | 6,360 | 6,200 | 6,000 | 6,250 | 6,450 | 6,340 |
| Total | 50,100 | 52,750 | 54,170 | 52,230 | 50,900 | 53,410 | 55,330 | 53,680 | 52,150 | 54,440 | 56,520 | 54,830 |

⁷ Under the Social Security (Jersey) Law 1974 one of the pieces of information held against everyone's unique registration number is their nationality.

⁸ Both sources count people with more than one job (with different undertakings) as multiples.

During Q4 2007 a total of 4,530 unique contributors (8% of the total) were paid from or on behalf of nationals from A8 countries, about 94% of whom were Polish. For reasons given above, the actual number of A8 people in work at a given point in time, many in seasonal jobs, will be lower than the figure based on the number of unique contributors. Nevertheless, the ongoing increase in the number of contributors from A8 nationals over the past five years is apparent in Figure 10.

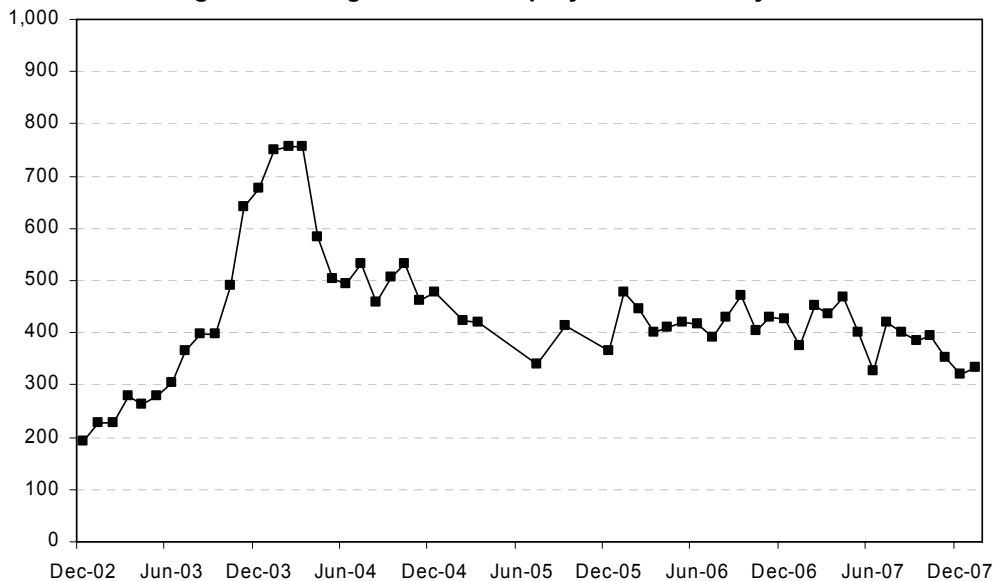
Figure 10 - Number of unique Social Security contributors from A8 nationals 2003-2007.



Unemployment

The number of people registered as unemployed in Jersey in December 2007 was 320, about 100 lower than in the previous December and representing the lowest monthly figure for four and a half years, since June 2003. The number of people registered with the Social Security Department as unemployed in Jersey on a monthly basis since December 2002 is presented in Figure 11.

Figure 11 - Registered unemployment in Jersey 2002-2007



Registered unemployment in Jersey has averaged about 400 people per month during the past three years; the most recent figures for early 2008 were slightly below this average, 330 and 360 in January and February 2008, respectively.

Figure 11 shows that registered unemployment in Jersey rose throughout 2003 and early 2004 before falling again. The level has been substantially stable, at around 400, since early 2005.

It must be re-iterated that due to the absence of unemployment benefit in Jersey the number of people registered as unemployed should be regarded as an indicator rather than a measure of the actual level of unemployment, and can be influenced by factors such as greater awareness of the other benefits of registering as unemployed.

International comparisons

In the UK, for the fourth quarter of 2007 there were 29 million people employed and almost 0.8 million people claiming Jobseeker's Allowance (the Claimant Count). In Guernsey in December 2007 there were 32,170 people in employment (24% in Finance, a similar proportion to Jersey) and 220 people registered as unemployed.

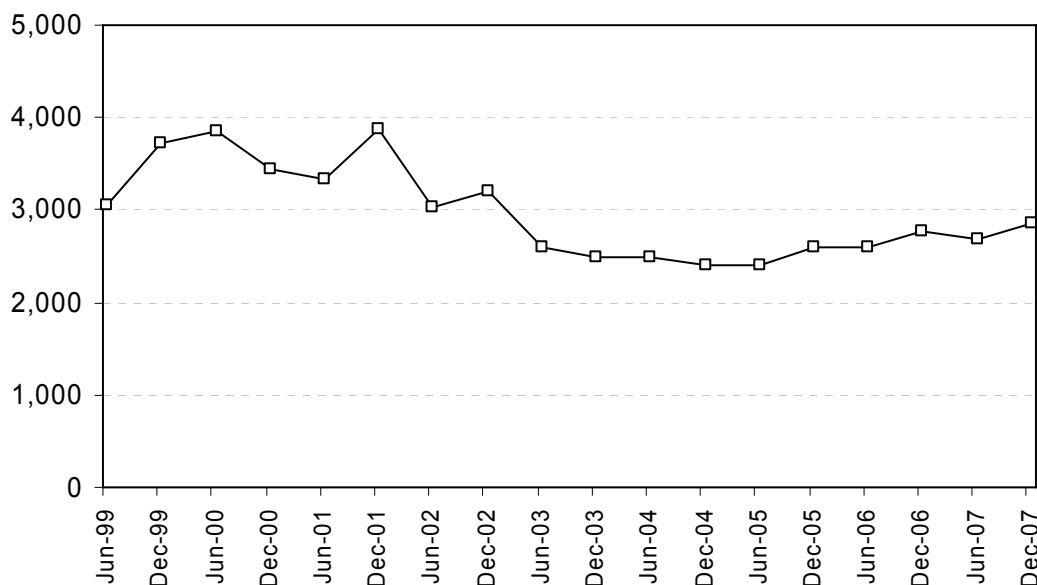
In Jersey there were 320 persons registered as unemployed in December 2007. People *registered* as unemployed were therefore less than 1% of total employment in Jersey and Guernsey in December 2007, compared to about 3% in the UK⁹.

However, such a comparison based on the numbers of *registered* unemployed is likely to be affected by the absence of unemployment benefit in Jersey, reducing the incentive to register as unemployed. A better indicator is the ILO unemployment rate (see Note 5): for Jersey this stood at 1.4% in the third quarter of 2007¹⁰, whilst the ILO unemployment rate for the UK was 5.4% and 5.2% in the third and fourth quarters of 2007, respectively.

Vacancies

The total number of vacancies (full- and part-time) in the private sector in December 2007 (2,850) was the highest December figure reported for five years (Figure 12).

Figure 12 - Private sector vacancies



⁹ Figures for the UK are from the Office for National Statistics: Labour market statistics, January 2008.

¹⁰ Jersey Annual Social Survey, 2007; States of Jersey Statistics Unit, February 2008.

The Finance sector reported the highest number of vacancies (850) of any individual sector. Acknowledging that there may be some inconsistency in the reporting of vacancies by undertakings in the private sector, and also the possible effect of changes in wording on the Manpower Survey form itself, Figure 12 nevertheless indicates that the overall level of vacancies has increased during the past two years but remains below that of the period 1999-2002.

Statistics Unit

23 April 2008

Notes

1. The Manpower Survey is a census of some 5,600 undertakings in Jersey, which employ a total of more than 46,400 staff (December 2007) including some 8,300 part-time staff (who may have more than one job). Prior to December 2001, the Survey was conducted quarterly; from June 2002 the survey has taken place at six-monthly intervals.
2. The “private sector” includes States Trading Committees (former and current), the Jersey Financial Services Commission, the Family Nursing and Home Care Service and the Jersey Competition Regulatory Authority. These bodies, which are subject to the Regulation of Undertakings and Development Law, accounted for a total of 1,420 staff at December 2007.
3. For the six-monthly data of figures 1, 5b and 7, short-term variations (largely due to seasonal factors) were removed by calculating a weighted three-point moving average; entries for June 1996 and December 2007, therefore, do not appear in these plots.
4. The definition of “locally qualified” as applied under the *Regulation of Undertakings and Development (Jersey) Law, 1973 as amended* includes all persons in the following categories:
 - i) residentially qualified persons falling within any of the Housing Regulations, excluding Regulation (l) and Regulation (m);
 - ii) persons resident for the whole of the past consecutive 5 years;
 - iii) the spouses of (i) or (ii) above;
 - iv) the children under 18 years (or if students under 25 years) of those in (i), (ii) or (iii) above.

The analysis in this report further divides the locally qualified between j-category and the remainder.

The residential status of staff in the private sector was recorded for the first time by the December 2001 Manpower Survey. Each undertaking reported the numbers of locally qualified and non-locally qualified employees; full-time employees with j-category housing qualifications were recorded separately from other locally qualified staff.
5. The International Labour Organisation (ILO) definition of unemployment includes all adults (aged 16 and over) who are not working and looking for or waiting to take up a job.
6. The historic numbers for the private sector presented in the appendices show some minor differences from those presented in previous Manpower Survey reports; these arise from revisions to staffing levels reported by a small number of undertakings.
7. As detailed in the complementary Manpower Report published by the States of Jersey Treasury and Resources Department, the public sector employment figure for December 2007 has been determined using the new Human Resources Information System. (HRIS). The resulting headcount figure for the public sector (6,630) now counts employees working in more than one post within the States of Jersey only once; previously such employees were counted as multiples. Previous total headcount figures reported for the public sector (shown in Table 1) have not been revised on this basis and as such represent upper bounds in terms of the new HRIS reporting methodology.
8. Further information about the Manpower Survey is available from the States of Jersey Statistics Unit, telephone 440403, and about the States of Jersey Manpower Report from the Treasury, telephone 440220. Enquiries about the Regulation of Undertakings and Development Law should be addressed to the Population Office, telephone 448930.

Appendix 1- Manpower Engaged by Sector

(in businesses in which two or more people are engaged)

| | Jun-97 | Dec-97 | Jun-98 | Dec-98 | Jun-99 | Dec-99 | Jun-00 | Dec-00 | Jun-01 | Dec-01 | Jun-02 | Dec-02 | Jun-03 | Dec-03 | Jun-04 | Dec-04 | Jun-05 | Dec-05 | Jun-06 | Dec-06 | Jun-07 | Dec-07 |
|--------------------------------------|---------------|---------------|---------------|---------------|---------------|---------------|---------------|---------------|---------------|---------------|---------------|---------------|---------------|---------------|---------------|---------------|---------------|---------------|---------------|---------------|---------------|---------------|
| Full-time staff | | | | | | | | | | | | | | | | | | | | | | |
| Agriculture and Fishing | 2,140 | 1,470 | 2,180 | 1,440 | 2,170 | 1,470 | 1,980 | 1,420 | 1,940 | 1,330 | 1,870 | 1,410 | 1,810 | 1,360 | 1,710 | 1,250 | 1,910 | 1,230 | 1,860 | 1,280 | 1,940 | 1,300 |
| Manufacturing | 2,030 | 1,970 | 1,960 | 1,940 | 1,960 | 1,910 | 1,970 | 1,880 | 1,770 | 1,740 | 1,830 | 1,730 | 1,700 | 1,560 | 1,550 | 1,380 | 1,390 | 1,340 | 1,280 | 1,240 | 1,220 | 1,170 |
| Construction and Quarrying | 4,100 | 4,350 | 4,610 | 4,290 | 4,280 | 4,100 | 4,090 | 3,990 | 4,320 | 4,320 | 4,410 | 4,280 | 4,160 | 3,910 | 4,050 | 4,020 | 4,340 | 4,290 | 4,570 | 4,420 | 4,520 | 4,410 |
| Electricity, Gas and Water | 580 | 620 | 600 | 620 | 600 | 580 | 610 | 600 | 590 | 580 | 560 | 540 | 530 | 500 | 490 | 490 | 480 | 480 | 490 | 490 | 480 | 490 |
| Wholesale and Retail Trades | 6,710 | 6,530 | 6,730 | 6,460 | 6,520 | 6,270 | 6,350 | 6,190 | 6,250 | 6,140 | 6,200 | 6,080 | 6,180 | 6,140 | 6,130 | 6,350 | 6,330 | 6,430 | 6,360 | 6,520 | 6,360 | 6,600 |
| Hotels, Restaurants & Bars | 6,790 | 4,110 | 6,790 | 4,130 | 6,510 | 3,800 | 6,120 | 3,720 | 5,720 | 3,490 | 5,530 | 3,560 | 5,410 | 3,550 | 5,210 | 3,370 | 5,080 | 3,400 | 5,200 | 3,440 | 5,140 | 3,610 |
| Transport, Storage & Communication | 2,380 | 2,340 | 2,500 | 2,370 | 2,570 | 2,370 | 2,500 | 2,300 | 2,530 | 2,290 | 2,490 | 2,260 | 2,410 | 2,210 | 2,370 | 2,210 | 2,370 | 2,160 | 2,310 | 2,210 | 2,330 | 2,240 |
| Computer and related activities | 200 | 210 | 230 | 210 | 230 | 250 | 280 | 310 | 300 | 300 | 320 | 300 | 320 | 320 | 310 | 320 | 330 | 340 | 350 | 320 | 340 | 370 |
| Financial and Legal Activities | 9,060 | 9,550 | 9,950 | 10,180 | 10,280 | 10,140 | 10,400 | 10,510 | 10,670 | 10,890 | 10,980 | 11,000 | 10,730 | 10,500 | 10,440 | 10,420 | 10,570 | 10,560 | 10,800 | 11,160 | 11,430 | 11,830 |
| Miscellaneous Business Activities | 1,250 | 1,240 | 1,340 | 1,260 | 1,380 | 1,240 | 1,350 | 1,330 | 1,370 | 1,270 | 1,380 | 1,330 | 1,380 | 1,330 | 1,380 | 1,290 | 1,370 | 1,300 | 1,410 | 1,400 | 1,520 | 1,520 |
| Education, Health and Other Services | 2,630 | 2,500 | 2,690 | 2,570 | 2,690 | 2,530 | 2,710 | 2,580 | 2,750 | 2,610 | 2,790 | 2,710 | 2,860 | 2,800 | 2,910 | 2,790 | 2,880 | 2,830 | 2,990 | 3,010 | 3,170 | 3,100 |
| Total full-time staff | 37,870 | 34,880 | 39,580 | 35,460 | 39,180 | 34,650 | 38,350 | 34,820 | 38,210 | 34,970 | 38,340 | 35,190 | 37,480 | 34,180 | 36,540 | 33,890 | 37,060 | 34,360 | 37,620 | 35,470 | 38,430 | 36,640 |
| Part-time staff | | | | | | | | | | | | | | | | | | | | | | |
| Agriculture and Fishing | 200 | 210 | 220 | 200 | 230 | 160 | 210 | 170 | 200 | 180 | 230 | 150 | 240 | 160 | 210 | 170 | 170 | 150 | 230 | 150 | 190 | 160 |
| Manufacturing | 390 | 360 | 420 | 380 | 420 | 410 | 420 | 380 | 480 | 460 | 430 | 370 | 360 | 320 | 330 | 300 | 320 | 260 | 250 | 250 | 270 | 250 |
| Construction and Quarrying | 240 | 250 | 270 | 280 | 260 | 240 | 240 | 260 | 260 | 260 | 250 | 280 | 250 | 260 | 300 | 270 | 250 | 250 | 240 | 240 | 240 | 240 |
| Electricity, Gas and Water | 20 | 30 | 20 | 20 | 20 | 20 | 10 | 20 | 20 | 20 | 20 | 20 | 10 | 10 | 10 | 20 | 20 | 10 | 10 | 40 | 40 | 30 |
| Wholesale and Retail Trades | 1,930 | 1,920 | 2,010 | 1,800 | 1,750 | 1,720 | 1,730 | 1,590 | 1,560 | 1,620 | 1,560 | 1,560 | 1,640 | 1,690 | 1,640 | 1,850 | 1,750 | 1,860 | 1,710 | 1,800 | 1,710 | 1,600 |
| Hotels, Restaurants & Bars | 1,080 | 930 | 1,180 | 950 | 1,180 | 940 | 1,030 | 950 | 1,000 | 900 | 1,010 | 780 | 950 | 800 | 920 | 800 | 1,030 | 860 | 960 | 930 | 1,080 | 870 |
| Transport, Storage & Communication | 330 | 200 | 370 | 260 | 340 | 230 | 360 | 290 | 320 | 280 | 270 | 240 | 230 | 220 | 220 | 210 | 230 | 230 | 270 | 220 | 290 | 290 |
| Computer and related activities | 30 | 30 | 40 | 50 | 50 | 50 | 70 | 70 | 60 | 60 | 60 | 60 | 60 | 50 | 40 | 60 | 60 | 60 | 50 | 50 | 50 | 50 |
| Financial and Legal Activities | 1,230 | 1,240 | 1,300 | 1,310 | 1,320 | 1,270 | 1,300 | 1,330 | 1,360 | 1,320 | 1,290 | 1,270 | 1,330 | 1,260 | 1,210 | 1,200 | 1,190 | 1,180 | 1,260 | 1,080 | 1,110 | 1,130 |
| Miscellaneous Business Activities | 1,070 | 1,080 | 1,260 | 1,210 | 1,270 | 1,160 | 1,250 | 1,180 | 1,260 | 1,110 | 1,170 | 1,210 | 1,280 | 1,240 | 1,240 | 1,210 | 1,310 | 1,260 | 1,310 | 1,290 | 1,330 | 1,440 |
| Education, Health and Other Services | 1,290 | 1,350 | 1,490 | 1,390 | 1,430 | 1,450 | 1,480 | 1,450 | 1,540 | 1,460 | 1,450 | 1,380 | 1,470 | 1,420 | 1,480 | 1,400 | 1,520 | 1,400 | 1,470 | 1,390 | 1,490 | 1,430 |
| Total part-time staff | 7,810 | 7,590 | 8,570 | 7,850 | 8,270 | 7,630 | 8,080 | 7,670 | 8,050 | 7,670 | 7,720 | 7,310 | 7,830 | 7,430 | 7,590 | 7,460 | 7,850 | 7,520 | 7,770 | 7,440 | 7,800 | 7,500 |
| All staff | | | | | | | | | | | | | | | | | | | | | | |
| Agriculture and Fishing | 2,340 | 1,680 | 2,400 | 1,640 | 2,400 | 1,640 | 2,190 | 1,580 | 2,140 | 1,510 | 2,100 | 1,560 | 2,050 | 1,530 | 1,920 | 1,420 | 2,080 | 1,380 | 2,090 | 1,430 | 2,130 | 1,460 |
| Manufacturing | 2,420 | 2,320 | 2,380 | 2,310 | 2,380 | 2,310 | 2,390 | 2,250 | 2,240 | 2,200 | 2,260 | 2,100 | 2,060 | 1,880 | 1,870 | 1,680 | 1,710 | 1,600 | 1,530 | 1,480 | 1,490 | 1,420 |
| Construction and Quarrying | 4,350 | 4,600 | 4,880 | 4,570 | 4,540 | 4,340 | 4,330 | 4,250 | 4,570 | 4,590 | 4,660 | 4,560 | 4,410 | 4,170 | 4,350 | 4,290 | 4,590 | 4,530 | 4,820 | 4,660 | 4,760 | 4,660 |
| Electricity, Gas and Water | 610 | 650 | 620 | 640 | 610 | 600 | 620 | 610 | 610 | 600 | 580 | 560 | 540 | 510 | 500 | 510 | 500 | 490 | 500 | 530 | 510 | 520 |
| Wholesale and Retail Trades | 8,630 | 8,450 | 8,740 | 8,270 | 8,270 | 7,990 | 8,080 | 7,780 | 7,810 | 7,760 | 7,750 | 7,640 | 7,810 | 7,840 | 7,770 | 8,210 | 8,080 | 8,290 | 8,080 | 8,320 | 8,060 | 8,210 |
| Hotels, Restaurants & Bars | 7,870 | 5,040 | 7,970 | 5,080 | 7,690 | 4,740 | 7,150 | 4,670 | 6,720 | 4,390 | 6,530 | 4,340 | 6,360 | 4,350 | 6,130 | 4,170 | 6,110 | 4,270 | 6,160 | 4,360 | 6,220 | 4,490 |
| Transport, Storage & Communication | 2,720 | 2,540 | 2,880 | 2,630 | 2,910 | 2,600 | 2,850 | 2,590 | 2,850 | 2,570 | 2,760 | 2,490 | 2,640 | 2,420 | 2,600 | 2,410 | 2,610 | 2,390 | 2,580 | 2,430 | 2,620 | 2,530 |
| Computer and related activities | 230 | 240 | 270 | 260 | 280 | 290 | 350 | 370 | 360 | 360 | 370 | 360 | 380 | 370 | 350 | 370 | 390 | 400 | 400 | 370 | 390 | 420 |
| Financial and Legal Activities | 10,300 | 10,780 | 11,250 | 11,480 | 11,600 | 11,410 | 11,700 | 11,830 | 12,040 | 12,220 | 12,270 | 12,270 | 12,070 | 11,750 | 11,640 | 11,620 | 11,760 | 11,740 | 12,050 | 12,240 | 12,540 | 12,970 |
| Miscellaneous Business Activities | 2,320 | 2,320 | 2,600 | 2,470 | 2,650 | 2,400 | 2,600 | 2,510 | 2,630 | 2,380 | 2,560 | 2,540 | 2,650 | 2,570 | 2,610 | 2,500 | 2,680 | 2,560 | 2,720 | 2,690 | 2,850 | 2,960 |
| Education, Health and Other Services | 3,910 | 3,850 | 4,180 | 3,960 | 4,120 | 3,980 | 4,180 | 4,040 | 4,300 | 4,070 | 4,230 | 4,090 | 4,340 | 4,220 | 4,390 | 4,190 | 4,400 | 4,230 | 4,450 | 4,400 | 4,650 | 4,530 |
| Total staff | 45,680 | 42,470 | 48,150 | 43,310 | 47,450 | 42,280 | 46,430 | 42,490 | 46,260 | 42,630 | 46,070 | 42,500 | 45,300 | 41,600 | 44,140 | 41,350 | 44,900 | 41,880 | 45,390 | 42,910 | 46,230 | 44,140 |

Note: Staff numbers and vacancies in the Appendices have been rounded independently to the nearest 10. Hence, components may not add to group totals.

Appendix 2- Staff numbers and vacancies

(all businesses, including one-person businesses)

| | Staff numbers | | | | | | | | |
|--------------------------------------|---------------|---------------|---------------|---------------|---------------|---------------|---------------|---------------|---------------|
| | Dec-03 | Jun-04 | Dec-04 | Jun-05 | Dec-05 | Jun-06 | Dec-06 | Jun-07 | Dec-07 |
| Full-time staff | | | | | | | | | |
| Agriculture and Fishing | 1,440 | 1,780 | 1,330 | 1,980 | 1,300 | 1,940 | 1,360 | 2,020 | 1,380 |
| Manufacturing | 1,610 | 1,600 | 1,430 | 1,440 | 1,400 | 1,340 | 1,300 | 1,280 | 1,230 |
| Construction and Quarrying | 4,210 | 4,350 | 4,340 | 4,670 | 4,630 | 4,940 | 4,800 | 4,910 | 4,810 |
| Electricity, Gas and Water | 500 | 490 | 490 | 480 | 480 | 490 | 490 | 480 | 490 |
| Wholesale and Retail Trades | 6,300 | 6,310 | 6,530 | 6,520 | 6,610 | 6,550 | 6,700 | 6,540 | 6,800 |
| Hotels, Restaurants & Bars | 3,580 | 5,230 | 3,400 | 5,100 | 3,450 | 5,230 | 3,480 | 5,170 | 3,660 |
| Transport, Storage & Communication | 2,280 | 2,450 | 2,290 | 2,460 | 2,250 | 2,400 | 2,310 | 2,440 | 2,350 |
| Computer and related activities | 370 | 370 | 360 | 380 | 400 | 420 | 390 | 420 | 440 |
| Financial and Legal Activities | 10,560 | 10,510 | 10,490 | 10,640 | 10,620 | 10,870 | 11,240 | 11,500 | 11,900 |
| Miscellaneous Business Activities | 1,500 | 1,560 | 1,470 | 1,570 | 1,500 | 1,630 | 1,620 | 1,740 | 1,740 |
| Education, Health and Other Services | 2,950 | 3,060 | 2,940 | 3,050 | 2,990 | 3,150 | 3,180 | 3,350 | 3,290 |
| Total full-time staff | 35,290 | 37,710 | 35,080 | 38,300 | 35,630 | 38,930 | 36,860 | 39,850 | 38,090 |
| Part-time staff | | | | | | | | | |
| Agriculture and Fishing | 180 | 220 | 170 | 180 | 180 | 240 | 170 | 210 | 180 |
| Manufacturing | 340 | 340 | 310 | 340 | 280 | 280 | 270 | 300 | 280 |
| Construction and Quarrying | 300 | 340 | 310 | 280 | 280 | 280 | 270 | 280 | 280 |
| Electricity, Gas and Water | 10 | 10 | 20 | 20 | 10 | 10 | 40 | 40 | 30 |
| Wholesale and Retail Trades | 1,790 | 1,750 | 1,980 | 1,890 | 2,030 | 1,880 | 1,980 | 1,900 | 1,790 |
| Hotels, Restaurants & Bars | 810 | 930 | 810 | 1,040 | 880 | 970 | 950 | 1,100 | 900 |
| Transport, Storage & Communication | 230 | 240 | 230 | 260 | 240 | 290 | 240 | 310 | 310 |
| Computer and related activities | 80 | 80 | 100 | 90 | 90 | 80 | 90 | 80 | 90 |
| Financial and Legal Activities | 1,290 | 1,240 | 1,240 | 1,230 | 1,220 | 1,310 | 1,120 | 1,160 | 1,190 |
| Miscellaneous Business Activities | 1,330 | 1,330 | 1,310 | 1,420 | 1,390 | 1,430 | 1,410 | 1,460 | 1,580 |
| Education, Health and Other Services | 1,570 | 1,650 | 1,580 | 1,710 | 1,610 | 1,700 | 1,620 | 1,720 | 1,700 |
| Total part-time staff | 7,920 | 8,120 | 8,050 | 8,460 | 8,210 | 8,460 | 8,150 | 8,560 | 8,320 |
| All staff | | | | | | | | | |
| Agriculture and Fishing | 1,610 | 2,000 | 1,500 | 2,170 | 1,480 | 2,180 | 1,530 | 2,230 | 1,560 |
| Manufacturing | 1,950 | 1,950 | 1,750 | 1,780 | 1,680 | 1,610 | 1,560 | 1,580 | 1,510 |
| Construction and Quarrying | 4,510 | 4,690 | 4,650 | 4,950 | 4,920 | 5,220 | 5,080 | 5,190 | 5,090 |
| Electricity, Gas and Water | 510 | 500 | 510 | 500 | 500 | 500 | 530 | 510 | 520 |
| Wholesale and Retail Trades | 8,090 | 8,050 | 8,510 | 8,400 | 8,640 | 8,430 | 8,680 | 8,440 | 8,590 |
| Hotels, Restaurants & Bars | 4,390 | 6,160 | 4,210 | 6,140 | 4,330 | 6,200 | 4,430 | 6,270 | 4,560 |
| Transport, Storage & Communication | 2,510 | 2,690 | 2,520 | 2,710 | 2,490 | 2,680 | 2,550 | 2,750 | 2,660 |
| Computer and related activities | 450 | 450 | 460 | 480 | 490 | 500 | 480 | 500 | 520 |
| Financial and Legal Activities | 11,850 | 11,750 | 11,730 | 11,860 | 11,850 | 12,180 | 12,360 | 12,650 | 13,090 |
| Miscellaneous Business Activities | 2,830 | 2,890 | 2,780 | 2,990 | 2,880 | 3,060 | 3,020 | 3,200 | 3,320 |
| Education, Health and Other Services | 4,520 | 4,700 | 4,520 | 4,770 | 4,600 | 4,840 | 4,800 | 5,070 | 4,980 |
| Total staff | 43,210 | 45,830 | 43,130 | 46,760 | 43,850 | 47,390 | 45,020 | 48,410 | 46,410 |

| | Vacancies | | | | | | | | |
|--------------------------------------|--------------|--------------|--------------|--------------|--------------|--------------|--------------|--------------|--------------|
| | Dec-03 | Jun-04 | Dec-04 | Jun-05 | Dec-05 | Jun-06 | Dec-06 | Jun-07 | Dec-07 |
| Agriculture and Fishing | 70 | 50 | 70 | 50 | 90 | 40 | 60 | 40 | 60 |
| Manufacturing | 60 | 70 | 80 | 70 | 60 | 60 | 70 | 70 | 100 |
| Construction and Quarrying | 250 | 300 | 290 | 330 | 320 | 260 | 310 | 310 | 330 |
| Electricity, Gas and Water | 30 | 30 | 20 | 20 | 20 | 20 | 20 | 20 | 20 |
| Wholesale and Retail Trades | 380 | 390 | 370 | 400 | 380 | 360 | 320 | 370 | 370 |
| Hotels, Restaurants & Bars | 270 | 250 | 310 | 250 | 360 | 310 | 370 | 260 | 270 |
| Transport, Storage & Communication | 70 | 50 | 70 | 80 | 80 | 90 | 70 | 100 | 80 |
| Computer and related activities | 20 | 30 | 30 | 30 | 30 | 30 | 30 | 40 | 30 |
| Financial and Legal Activities | 540 | 580 | 480 | 540 | 630 | 820 | 850 | 810 | 820 |
| Miscellaneous Business Activities | 120 | 120 | 100 | 120 | 110 | 120 | 130 | 130 | 120 |
| Education, Health and Other Services | 140 | 150 | 150 | 140 | 140 | 160 | 170 | 150 | 170 |
| Total | 1,950 | 2,010 | 1,970 | 2,020 | 2,200 | 2,250 | 2,400 | 2,290 | 2,380 |
| Part-time staff | | | | | | | | | |
| Agriculture and Fishing | 30 | 10 | 30 | 10 | 30 | + | + | + | 10 |
| Manufacturing | 10 | + | 20 | 10 | 20 | 10 | 20 | 10 | 30 |
| Construction and Quarrying | 10 | 10 | 20 | 10 | 10 | 10 | 10 | 10 | 20 |
| Electricity, Gas and Water | + | + | + | + | + | + | + | + | + |
| Wholesale and Retail Trades | 130 | 130 | 100 | 90 | 90 | 80 | 100 | 100 | 80 |
| Hotels, Restaurants & Bars | 60 | 60 | 50 | 50 | 60 | 60 | 60 | 50 | 120 |
| Transport, Storage & Communication | 20 | 20 | 20 | 20 | 20 | 10 | 10 | 10 | 20 |
| Computer and related activities | 10 | 10 | 10 | 10 | 10 | 10 | + | + | + |
| Financial and Legal Activities | 30 | 30 | 40 | 20 | 20 | 40 | 30 | 30 | 30 |
| Miscellaneous Business Activities | 140 | 120 | 50 | 60 | 40 | 30 | 50 | 90 | 70 |
| Education, Health and Other Services | 90 | 100 | 90 | 100 | 100 | 100 | 100 | 90 | 110 |
| Total | 540 | 490 | 420 | 380 | 400 | 360 | 380 | 400 | 470 |
| All staff | | | | | | | | | |
| Agriculture and Fishing | 100 | 50 | 100 | 50 | 120 | 40 | 60 | 40 | 70 |
| Manufacturing | 70 | 70 | 100 | 90 | 80 | 60 | 90 | 80 | 130 |
| Construction and Quarrying | 260 | 310 | 310 | 340 | 330 | 270 | 330 | 320 | 350 |
| Electricity, Gas and Water | 30 | 30 | 20 | 30 | 20 | 20 | 20 | 20 | 20 |
| Wholesale and Retail Trades | 510 | 520 | 470 | 490 | 470 | 440 | 420 | 470 | 450 |
| Hotels, Restaurants & Bars | 330 | 310 | 360 | 300 | 410 | 370 | 430 | 300 | 390 |
| Transport, Storage & Communication | 90 | 70 | 90 | 100 | 90 | 100 | 70 | 110 | 100 |
| Computer and related activities | 30 | 40 | 40 | 40 | 30 | 40 | 40 | 50 | 40 |
| Financial and Legal Activities | 570 | 610 | 520 | 560 | 650 | 860 | 880 | 840 | 850 |
| Miscellaneous Business Activities | 260 | 240 | 160 | 170 | 160 | 160 | 190 | 210 | 190 |
| Education, Health and Other Services | 230 | 250 | 240 | 240 | 240 | 260 | 270 | 250 | 280 |
| Total | 2,490 | 2,500 | 2,400 | 2,400 | 2,600 | 2,610 | 2,780 | 2,690 | 2,850 |

| | Vacancies as % of employed | | | | | | | | |
|--------------------------------------|----------------------------|----------|----------|----------|----------|----------|----------|----------|----------|
| | Dec-03 | Jun-04 | Dec-04 | Jun-05 | Dec-05 | Jun-06 | Dec-06 | Jun-07 | Dec-07 |
| Agriculture and Fishing | 5 | 3 | 5 | 3 | 7 | 2 | 4 | 2 | 4 |
| Manufacturing | 4 | 4 | 6 | 5 | 4 | 4 | 5 | 5 | 8 |
| Construction and Quarrying | 6 | 7 | 7 | 7 | 7 | 5 | 6 | 6 | 7 |
| Electricity, Gas and Water | 6 | 6 | 4 | 4 | 4 | 4 | 4 | 4 | 4 |
| Wholesale and Retail Trades | 6 | 6 | 6 | 6 | 6 | 5 | 5 | 6 | 5 |
| Hotels, Restaurants & Bars | 8 | 5 | 9 | 5 | 10 | 6 | 11 | 5 | 7 |
| Transport, Storage & Communication | 3 | 2 | 3 | 3 | 4 | 4 | 3 | 4 | 3 |
| Computer and related activities | 5 | 8 | 8 | 8 | 8 | 7 | 8 | 10 | 7 |
| Financial and Legal Activities | 5 | 6 | 5 | 5 | 6 | 8 | 8 | 7 | 7 |
| Miscellaneous Business Activities | 8 | 8 | 7 | 8 | 7 | 7 | 8 | 7 | 7 |
| Education, Health and Other Services | 5 | 5 | 5 | 5 | 5 | 5 | 5 | 4 | 5 |
| Total | 6 | 5 | 6 | 5 | 6 | 6 | 7 | 6 | 6 |
| Part-time staff | | | | | | | | | |
| Agriculture and Fishing | 17 | 5 | 18 | 6 | 17 | + | + | + | 3 |
| Manufacturing | 3 | 0 | 6 | 3 | 7 | 4 | 7 | 3 | 9 |
| Construction and Quarrying | 3 | 3 | 6 | 4 | 4 | 4 | 4 | 4 | 5 |
| Electricity, Gas and Water | 23 | 25 | 16 | 15 | 31 | 15 | 0 | 8 | 0 |
| Wholesale and Retail Trades | 7 | 7 | 5 | 5 | 4 | 4 | 5 | 5 | 5 |
| Hotels, Restaurants & Bars | 7 | 6 | 6 | 5 | 7 | 6 | 6 | 5 | 13 |
| Transport, Storage & Communication | 9 | 8 | 9 | 8 | 8 | 3 | 4 | 3 | 5 |
| Computer and related activities | 14 | 17 | 10 | 13 | 8 | 7 | 4 | 5 | 3 |
| Financial and Legal Activities | 2 | 2 | 3 | 2 | 2 | 3 | 3 | 3 | 2 |
| Miscellaneous Business Activities | 11 | 9 | 4 | 4 | 3 | 2 | 4 | 6 | 4 |
| Education, Health and Other Services | 6 | 6 | 6 | 6 | 6 | 6 | 6 | 5 | 7 |
| Total | 7 | 6 | 5 | 4 | 5 | 4 | 5 | 5 | 6 |
| All staff | | | | | | | | | |
| Agriculture and Fishing | 6 | 3 | 7 | 2 | 8 | 2 | 4 | 2 | 4 |
| Manufacturing | 4 | 4 | 6 | 5 | 5 | 4 | 6 | 5 | 8 |
| Construction and Quarrying | 6 | 7 | 7 | 7 | 7 | 5 | 6 | 6 | 7 |
| Electricity, Gas and Water | 6 | 6 | 4 | 6 | 4 | 4 | 4 | 4 | 3 |
| Wholesale and Retail Trades | 6 | 6 | 6 | 6 | 6 | 5 | 5 | 6 | 5 |
| Hotels, Restaurants & Bars | 8 | 5 | 9 | 5 | 9 | 6 | 10 | 5 | 8 |
| Transport, Storage & Communication | 4 | 3 | 4 | 4 | 4 | 4 | 3 | 4 | 4 |
| Computer and related activities | 7 | 9 | 9 | 8 | 6 | 8 | 8 | 10 | 7 |
| Financial and Legal Activities | 5 | 5 | 4 | 5 | 5 | 7 | 7 | 7 | 6 |
| Miscellaneous Business Activities | 9 | 8 | 6 | 6 | 6 | 5 | 6 | 7 | 6 |
| Education, Health and Other Services | 5 | 5 | 5 | 5 | 5 | 5 | 6 | 5 | 6 |
| Total | 6 | 5 | 6 | 5 | 6 | 6 | 6 | 6 | 6 |

Note: + means a non-zero number less than 5.

Appendix 3 - Residential Qualifications (see Note 4 for definitions)

(all businesses, including one-person businesses)

| | Dec-05 | | | | Jun-06 | | | | Dec-06 | | | | Jun-07 | | | | Dec-07 | | | |
|--------------------------------------|-------------------|-------------|-----------------------|---------------|-------------------|-------------|-----------------------|---------------|-------------------|-------------|-----------------------|---------------|-------------------|-------------|-----------------------|---------------|-------------------|-------------|-----------------------|---------------|
| | Locally Qualified | J- category | Non-locally Qualified | Total | Locally Qualified | J- category | Non-locally Qualified | Total | Locally Qualified | J- category | Non-locally Qualified | Total | Locally Qualified | J- category | Non-locally Qualified | Total | Locally Qualified | J- category | Non-locally Qualified | Total |
| Full-time staff | | | | | | | | | | | | | | | | | | | | |
| Agriculture and Fishing | 890 | + | 410 | 1,300 | 980 | + | 950 | 1,940 | 890 | + | 460 | 1,360 | 1,020 | + | 1,000 | 2,020 | 950 | + | 430 | 1,380 |
| Manufacturing | 1,170 | 10 | 230 | 1,400 | 1,100 | 10 | 230 | 1,340 | 1,080 | 20 | 210 | 1,300 | 1,070 | 20 | 200 | 1,280 | 1,030 | 10 | 190 | 1,230 |
| Construction and Quarrying | 4,070 | 20 | 530 | 4,630 | 4,310 | 30 | 610 | 4,940 | 4,230 | 30 | 540 | 4,800 | 4,400 | 30 | 480 | 4,910 | 4,330 | 30 | 450 | 4,810 |
| Electricity, Gas and Water | 450 | + | 30 | 480 | 460 | + | 20 | 490 | 460 | + | 30 | 490 | 450 | + | 20 | 480 | 460 | + | 30 | 490 |
| Wholesale and Retail Trades | 5,590 | 40 | 980 | 6,610 | 5,610 | 40 | 900 | 6,550 | 5,650 | 50 | 1,000 | 6,700 | 5,590 | 50 | 900 | 6,540 | 5,690 | 50 | 1,050 | 6,800 |
| Hotels, Restaurants & Bars | 1,760 | 20 | 1,660 | 3,450 | 2,150 | 30 | 3,050 | 5,230 | 1,760 | 20 | 1,700 | 3,480 | 2,220 | 20 | 2,930 | 5,170 | 1,840 | 30 | 1,790 | 3,660 |
| Transport, Storage & Communication | 2,140 | 30 | 80 | 2,250 | 2,250 | 40 | 110 | 2,400 | 2,180 | 30 | 100 | 2,310 | 2,270 | 30 | 140 | 2,440 | 2,200 | 40 | 110 | 2,350 |
| Computer and related activities | 350 | 10 | 40 | 400 | 370 | 10 | 40 | 420 | 340 | 20 | 40 | 390 | 350 | 20 | 50 | 420 | 360 | 20 | 60 | 440 |
| Financial and Legal Activities | 9,110 | 460 | 1,060 | 10,620 | 9,310 | 510 | 1,050 | 10,870 | 9,570 | 590 | 1,080 | 11,240 | 9,730 | 610 | 1,150 | 11,500 | 10,070 | 640 | 1,200 | 11,900 |
| Miscellaneous Business Activities | 1,360 | 20 | 110 | 1,500 | 1,450 | 30 | 150 | 1,630 | 1,470 | 30 | 120 | 1,620 | 1,570 | 40 | 140 | 1,740 | 1,590 | 40 | 120 | 1,740 |
| Education, Health and Other Services | 2,560 | 110 | 320 | 2,990 | 2,680 | 110 | 360 | 3,150 | 2,700 | 110 | 370 | 3,180 | 2,780 | 120 | 440 | 3,350 | 2,750 | 130 | 400 | 3,290 |
| Total full-time staff | 29,430 | 740 | 5,450 | 35,630 | 30,650 | 800 | 7,480 | 38,930 | 30,320 | 900 | 5,650 | 36,860 | 31,450 | 950 | 7,450 | 39,850 | 31,270 | 990 | 5,830 | 38,090 |
| Part-time staff | | | | | | | | | | | | | | | | | | | | |
| Agriculture and Fishing | 170 | | + | 180 | 230 | | + | 240 | 160 | | 10 | 170 | 180 | | 30 | 210 | 170 | | 10 | 180 |
| Manufacturing | 210 | | 70 | 280 | 210 | | 70 | 280 | 200 | | 60 | 270 | 220 | | 80 | 300 | 220 | | 50 | 280 |
| Construction and Quarrying | 270 | | 10 | 280 | 270 | | 10 | 280 | 260 | | 10 | 270 | 270 | | 10 | 280 | 270 | | 10 | 280 |
| Electricity, Gas and Water | 10 | | 0 | 10 | 10 | | + | 10 | 30 | | 0 | 40 | 40 | | 0 | 40 | 30 | | + | 30 |
| Wholesale and Retail Trades | 1,880 | | 150 | 2,030 | 1,760 | | 120 | 1,880 | 1,850 | | 130 | 1,980 | 1,720 | | 180 | 1,900 | 1,670 | | 130 | 1,790 |
| Hotels, Restaurants & Bars | 570 | | 310 | 880 | 570 | | 400 | 970 | 560 | | 390 | 950 | 650 | | 450 | 1,100 | 590 | | 310 | 900 |
| Transport, Storage & Communication | 240 | | + | 240 | 290 | | + | 290 | 240 | | + | 240 | 300 | | 10 | 310 | 310 | | + | 310 |
| Computer and related activities | 80 | | + | 90 | 80 | | + | 80 | 80 | | + | 90 | 80 | | + | 80 | 90 | | + | 90 |
| Financial and Legal Activities | 1,210 | | 20 | 1,220 | 1,290 | | 20 | 1,310 | 1,100 | | 20 | 1,120 | 1,130 | | 30 | 1,160 | 1,170 | | 20 | 1,190 |
| Miscellaneous Business Activities | 950 | | 440 | 1,390 | 1,020 | | 410 | 1,430 | 1,110 | | 300 | 1,410 | 1,120 | | 340 | 1,460 | 1,000 | | 580 | 1,580 |
| Education, Health and Other Services | 1,540 | | 70 | 1,610 | 1,630 | | 70 | 1,700 | 1,560 | | 60 | 1,620 | 1,620 | | 100 | 1,720 | 1,620 | | 70 | 1,700 |
| Total part-time staff | 7,140 | | 1,080 | 8,210 | 7,360 | | 1,100 | 8,460 | 7,170 | | 990 | 8,150 | 7,320 | | 1,240 | 8,560 | 7,130 | | 1,190 | 8,320 |
| All staff | | | | | | | | | | | | | | | | | | | | |
| Agriculture and Fishing | 1,060 | + | 420 | 1,480 | 1,210 | + | 970 | 2,180 | 1,050 | + | 470 | 1,530 | 1,200 | + | 1,040 | 2,230 | 1,120 | + | 440 | 1,560 |
| Manufacturing | 1,370 | 10 | 300 | 1,680 | 1,310 | 10 | 290 | 1,610 | 1,280 | 20 | 270 | 1,560 | 1,290 | 20 | 270 | 1,580 | 1,250 | 10 | 250 | 1,510 |
| Construction and Quarrying | 4,350 | 20 | 540 | 4,910 | 4,570 | 30 | 620 | 5,220 | 4,490 | 30 | 550 | 5,080 | 4,670 | 30 | 490 | 5,190 | 4,610 | 30 | 450 | 5,090 |
| Electricity, Gas and Water | 470 | + | 30 | 500 | 470 | + | 20 | 500 | 490 | + | 30 | 530 | 480 | + | 30 | 510 | 490 | + | 30 | 520 |
| Wholesale and Retail Trades | 7,470 | 40 | 1,140 | 8,640 | 7,370 | 40 | 1,020 | 8,430 | 7,510 | 50 | 1,130 | 8,680 | 7,310 | 50 | 1,080 | 8,440 | 7,360 | 50 | 1,180 | 8,590 |
| Hotels, Restaurants & Bars | 2,330 | 20 | 1,970 | 4,330 | 2,720 | 30 | 3,450 | 6,200 | 2,320 | 20 | 2,090 | 4,430 | 2,860 | 20 | 3,380 | 6,270 | 2,430 | 30 | 2,100 | 4,560 |
| Transport, Storage & Communication | 2,380 | 30 | 90 | 2,490 | 2,530 | 40 | 120 | 2,680 | 2,420 | 30 | 100 | 2,550 | 2,580 | 30 | 150 | 2,750 | 2,510 | 40 | 120 | 2,660 |
| Computer and related activities | 430 | 10 | 50 | 490 | 450 | 10 | 40 | 500 | 420 | 20 | 40 | 480 | 430 | 20 | 50 | 500 | 450 | 20 | 60 | 520 |
| Financial and Legal Activities | 10,310 | 460 | 1,070 | 11,850 | 10,600 | 510 | 1,060 | 12,180 | 10,670 | 590 | 1,100 | 12,360 | 10,860 | 610 | 1,180 | 12,650 | 11,230 | 640 | 1,220 | 13,090 |
| Miscellaneous Business Activities | 2,310 | 20 | 550 | 2,880 | 2,470 | 30 | 560 | 3,060 | 2,580 | 30 | 410 | 3,020 | 2,690 | 40 | 480 | 3,200 | 2,580 | 40 | 700 | 3,320 |
| Education, Health and Other Services | 4,100 | 110 | 390 | 4,600 | 4,310 | 110 | 430 | 4,840 | 4,260 | 110 | 430 | 4,800 | 4,400 | 120 | 550 | 5,070 | 4,380 | 130 | 480 | 4,980 |
| Total staff | 36,570 | 740 | 6,530 | 43,850 | 38,010 | 800 | 8,580 | 47,390 | 37,480 | 900 | 6,640 | 45,020 | 38,780 | 950 | 8,690 | 48,410 | 38,400 | 990 | 7,020 | 46,410 |

Notes: j-category employees are employed on a full-time basis only;
+ means a non-zero number less than 5.