

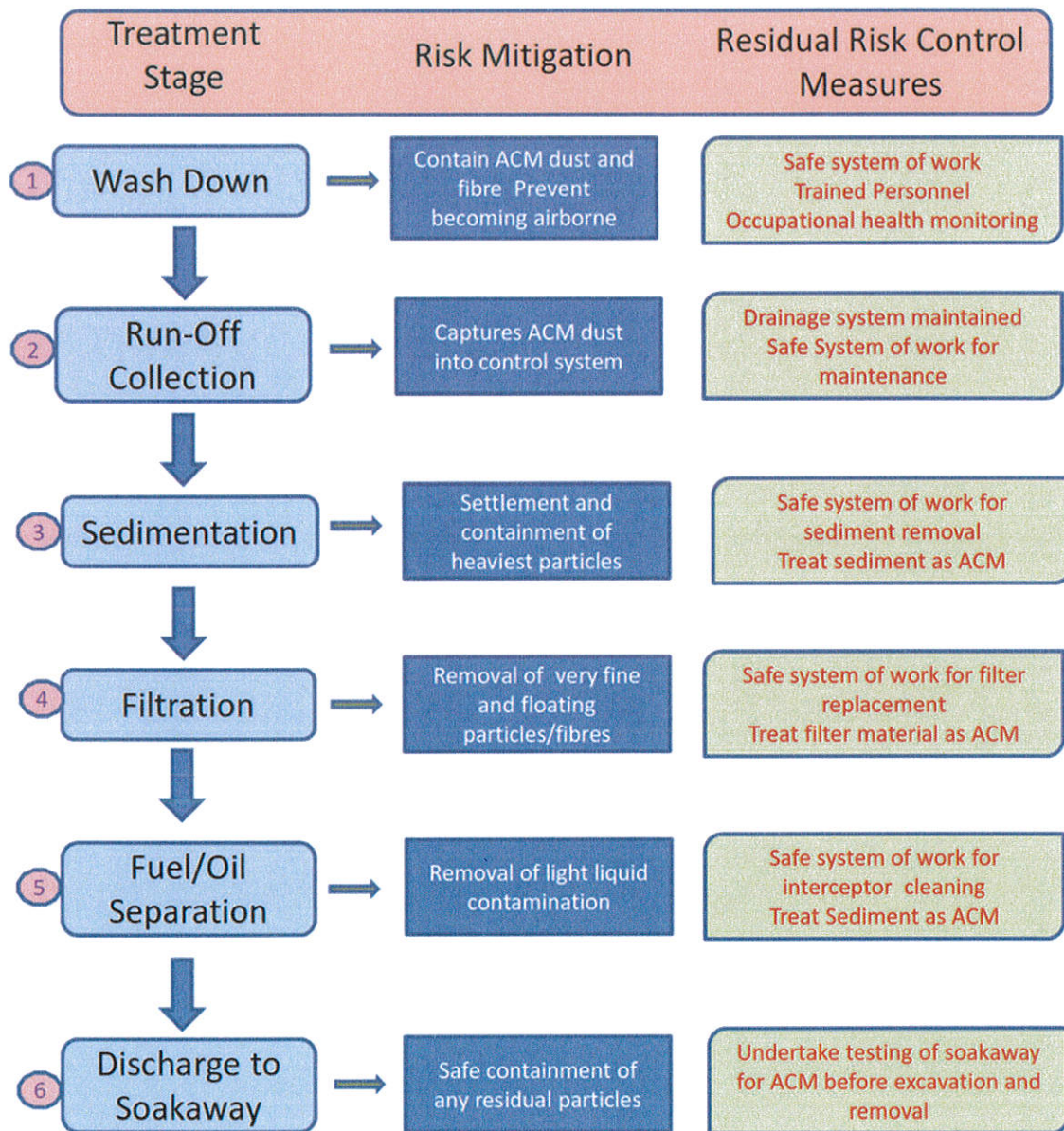
0.1 Asbestos Reception La Collette Drainage

0.1.1 Principles

0.1.1.1 The principal requirements of the drainage system for the La Collette Asbestos Reception are:

- To control and collect surface water runoff (from rainfall and wash-down operations) from the concrete hardstanding, which may contain asbestos containing material
- Separate potential asbestos containing material and retain it safely for disposal
- Discharge clean run-off to the environment without risk to human health or the environment
- Be maintainable without undue risk to maintenance operatives, the public and environment
- The drainage system comprises six treatment stages as illustrated in Figure 1:

Figure 1



0.1.2 The general arrangements of the site drainage system are shown the following drawing, La Collette, Detailed Site Plan 5247/04 Revision F.

0.1.3 Surface water from the Asbestos Reception areas will pass through a silt trap(s) & Separator before discharge through a sealed drainage system into the soak away.