

Jersey Labour Market at June 2010

Statistics Unit: www.gov.je/statistics

This report presents information on employment in Jersey at the end of June 2010, bringing together the results of the private sector¹ Manpower Survey and the public sector manpower figures compiled by the States of Jersey.

Headlines

The principal features of the Jersey Labour Market at June 2010 were²:

- **total employment was 56,200, essentially at the same level as a year earlier;**
- **total employment has been flat since mid-2008, and at the highest level since at least the mid-1990's;**
- the **private sector saw a net decrease of -80** over the 12 months to June 2010 and the **public sector recorded a net increase of +90;**
- of total employment: **49,360 (88%) were in the private sector** (including the States Trading Committees) and **6,840 (12%) were in the public sector**²;
- the **largest decrease** was recorded by the **Finance** sector, down -480 on an annual basis. This decrease was of predominantly full-time staff and was comprised of falls of -370 in the last six months of 2009 and of -110 in the first six months of 2010;
- the **largest increase** was recorded by the **Construction** sector, up +240 on an annual basis and predominantly of locally qualified staff. Total employment in this sector in June 2010 was at its highest level for at least fourteen years;
- in the private sector overall, compared with June 2009, the number of:
 - **locally qualified staff increased by +280,**
 - **j-category employees increased by +40,**
 - **non-locally qualified staff decreased by -420;**
- registered unemployment³ stood at 1,110 in June 2010; more recently the number of people registered as unemployed increased to 1,290 in August 2010; the provisional measure of the internationally comparable **ILO unemployment rate for Jersey in the summer of 2010 was 3.0%;**
- there were 2,700 **single-person undertakings** recorded in June 2010, some 210 more than a year earlier; increases were seen particularly in the services and Construction sectors.

¹ The Manpower Survey is analysed by the Statistics Unit on behalf of the Economic Development Department (Note 1).

² Throughout this report numbers are rounded independently to the nearest 10.

³ People registered with the Social Security Department as unemployed and actively seeking work.

Overview: Total Employment

Total employment in Jersey in June 2010, full-time and part-time, was 56,200 which is essentially at the same level (+10 higher) as in June 2009. The latest employment total follows a December figure that was also at essentially the same level on an annual basis.

The private sector, including States Trading Committees (see Note 2) and single-person enterprises, employed 49,360 people; 80 fewer than in June 2009. The public sector headcount was 6,840, a net increase of 90 on an annual basis.

Table 1: Employment (headcount) in the private and public sectors⁴.

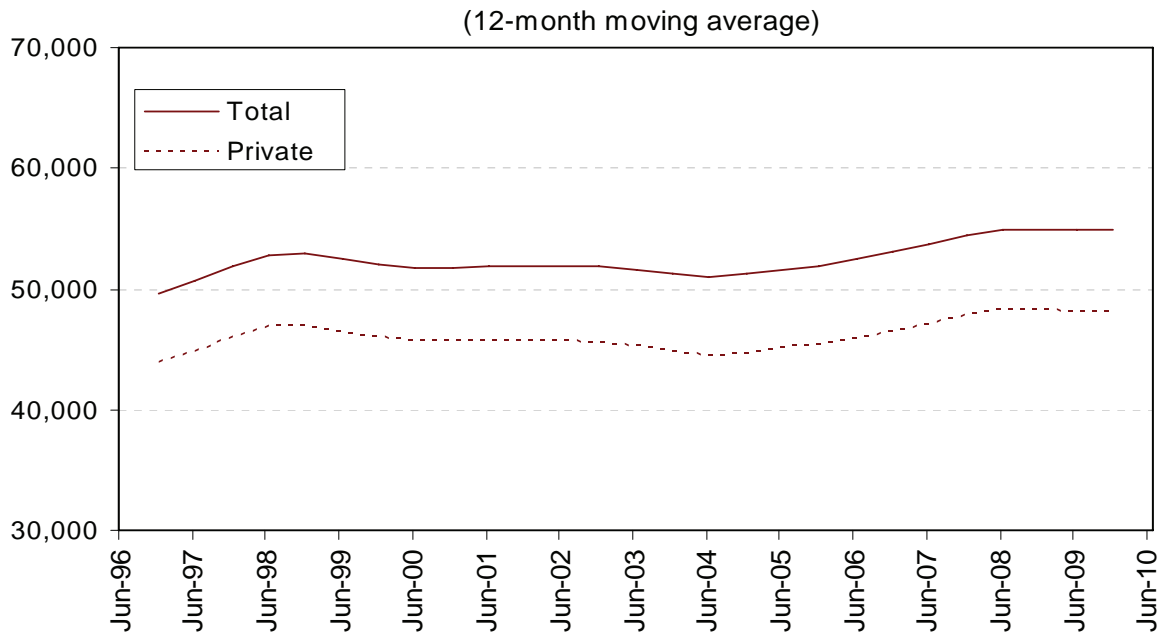
		Private	Public	Total
1997	Jun	47,010	5,970	52,970
	Dec	43,800	5,840	49,640
1998	Jun	49,480	5,970	55,450
	Dec	44,640	5,970	50,610
1999	Jun	48,770	6,170	54,940
	Dec	43,610	6,010	49,620
2000	Jun	47,760	6,110	53,870
	Dec	43,810	5,990	49,810
2001	Jun	47,560	6,200	53,760
	Dec	43,960	6,120	50,090
2002	Jun	47,390	6,250	53,640
	Dec	43,960	6,310	50,270
2003	Jun	46,790	6,440	53,230
	Dec	43,210	6,410	49,620
2004	Jun	45,830	6,590	52,420
	Dec	43,130	6,510	49,640
2005	Jun	46,760	6,530	53,280
	Dec	43,850	6,430	50,280
2006	Jun	47,380	6,540	53,910
	Dec	45,000	6,560	51,570
2007	Jun	48,380	6,730	55,110
	Dec	46,360	6,630	52,980
2008	Jun	49,880	6,730	56,610
	Dec	46,910	6,650	53,560
2009	Jun	49,440	6,750	56,190
	Dec	46,770	6,790	53,570
2010	Jun	49,360	6,840	56,200

Numbers are rounded independently to the nearest 10.

⁴ The public sector headcount figure reported since December 2007 is based on the new States of Jersey reporting system (see Note 7).

Figure 1 shows total and private sector employment since 1996 (see Note 3). Total employment had seen an ongoing increase throughout the period from 2005-2008 and has been essentially flat since mid-2008, at the highest level since at least the mid-1990's.

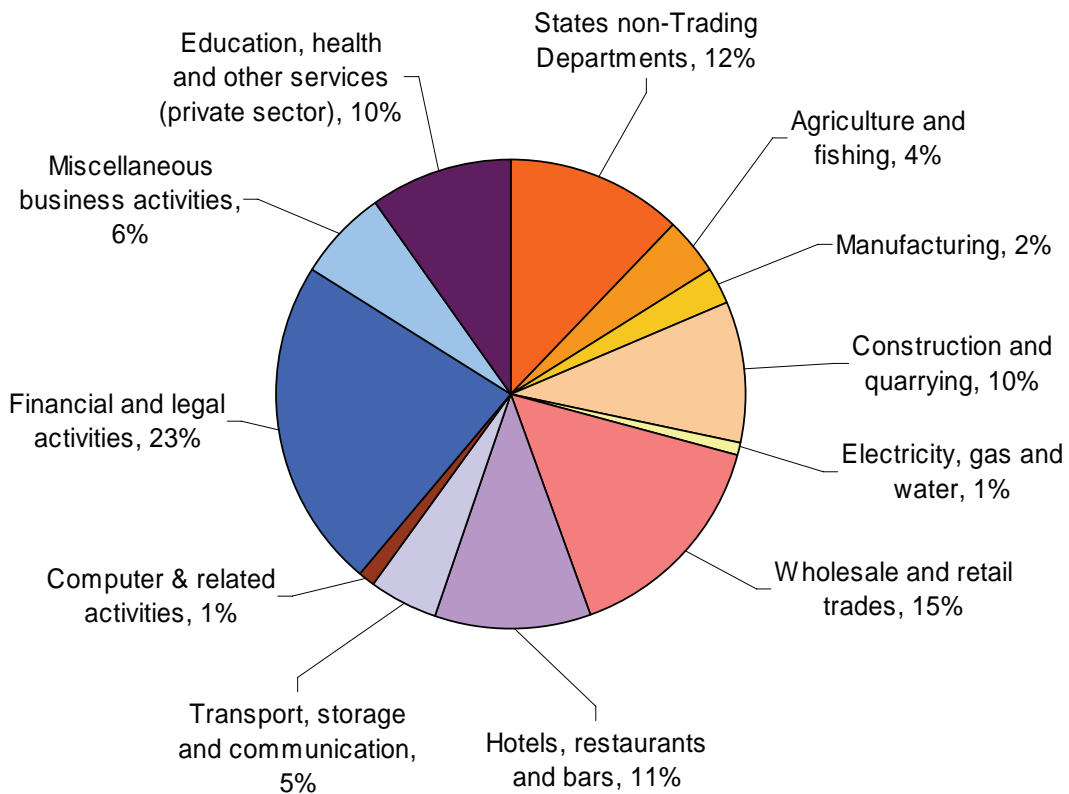
Figure 1 - Total and Private sector Headcount



Sectoral Breakdown

Figure 2 shows the sectoral breakdown of employment at June 2010:

Figure 2- Jersey employment June 2010 headcount



As Figure 2 shows:

- almost a quarter (23%) of the total were engaged in the Finance sector (12,770);
- nearly a sixth (15%) were in Wholesale and retail trades (8,540);
- the public sector (excluding Trading Committees) accounted for about one in eight (12%) of Jersey's labour force.

Private sector

There were 6,210 active undertakings in Jersey in June 2010 of which 2,700 were one-person businesses.

The number of people employed in Jersey businesses in June 2010 was 49,360, comprising 39,920 full-time and 9,440 part-time employees. The number of full-time staff decreased by -170 on an annual basis whilst the number of part-time staff increased by +90.

Total employment in the private sector in June 2010 was 80 lower than in June 2009. This net fall was driven by a decrease of -480 staff in the Finance sector.

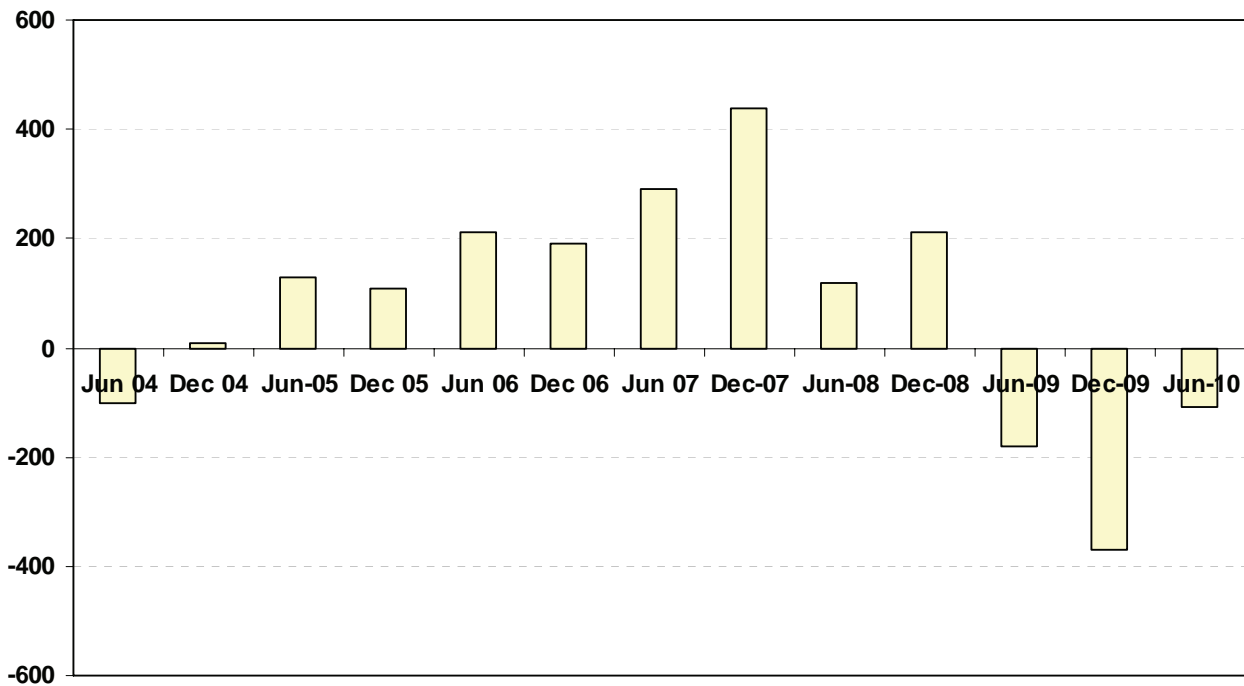
In June 2010, total employment in the Finance sector stood at 12,770. The decrease compared with June 2009 comprised a fall of -370 in the last six months of 2009 and a further fall of -110 in the first six months of 2010 (see Figure 3). The overall annual decrease was predominantly in the number of full-time staff, down by -390 compared with June 2009. As is apparent from Table 2, these falls in employment occurred mainly in the Banking sub-sector.

Table 2: Employment in the Financial services sub-sectors: Jun 2005 to Jun 2010⁵.

	Banking	Trust & Co Admin	Legal	Accountancy	Other	Total
Jun-05	5,570	2,470	2,150	790	900	11,860
Dec-05	5,460	2,560	2,250	810	900	11,970
Jun-06	5,390	2,830	2,300	780	880	12,180
Dec-06	5,810	2,520	2,320	800	920	12,370
Jun-07	5,840	2,670	2,390	830	940	12,660
Dec-07	6,100	2,790	2,500	870	840	13,100
Jun-08	6,060	2,850	2,560	880	870	13,220
Dec-08	6,050	2,880	2,580	980	950	13,430
Jun-09	5,900	2,950	2,490	940	950	13,250
Dec-09	5,600	2,870	2,490	970	960	12,880
Jun-10	5,470	3,320	2,040	990	950	12,770

⁵ The increase apparent in Table 2 for Trust & Co. Admin. between December 2009 and June 2010 was predominantly due to some reclassification of companies previously in the Legal sub-sector. The latter thus recorded a complementary decrease in the latest six-month period.

Figure 3 –Six-month changes in Finance sector employment 2004-2010



In contrast to the falls in employment seen by the Finance sector, the Construction sector recorded an annual increase of +240. Total employment in Construction in June 2010 was at the highest level seen by the sector since at least the mid-1990s. The Wholesale and retail and Miscellaneous business activities sectors also saw increases on an annual basis, each up by +80 on a year previously.

Within the Wholesale and retail sector, a total of 950 staff were employed in fulfilment activities in June 2010, an increase of +160 on the previous June and down by -70 on December 2009, reflecting the seasonal nature of this sub-sector.

Employment excluding one-person businesses⁶

Excluding one-person enterprises, there were a total of 3,510 active undertakings in Jersey in June 2010. Total employment in such undertakings was 46,660, a decrease of 300 from June 2009, driven by reduced employment in Finance (down 470).

Over a shorter time-frame, between December 2009 and June 2010, total employment in the private sector increased by 2,560. Shorter-term changes are heavily influenced by seasonal factors, as can be seen in Figure 4a. The underlying trend, excluding seasonal and other short-term variations, is shown by Figure 4b (see Note 3). The twelve-month percentage changes are shown in Figure 5.

⁶ These data are shown in order to obtain a longer term view of employment in Jersey since one-person undertakings were not consistently reported before 2000.

Figure 4a - Employment in Jersey Undertakings

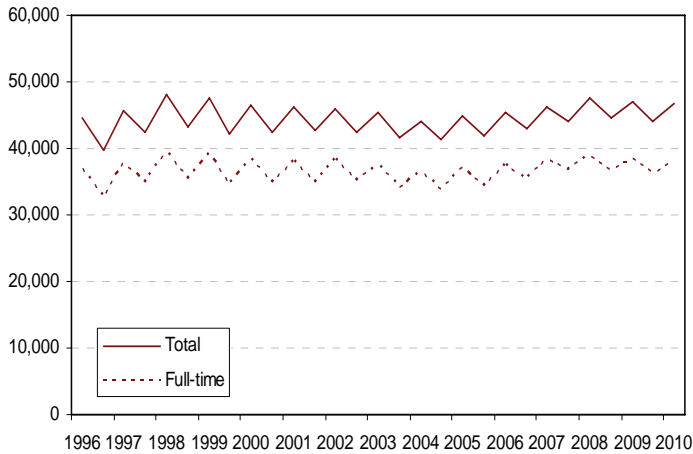


Figure 4b - Underlying trend in employment

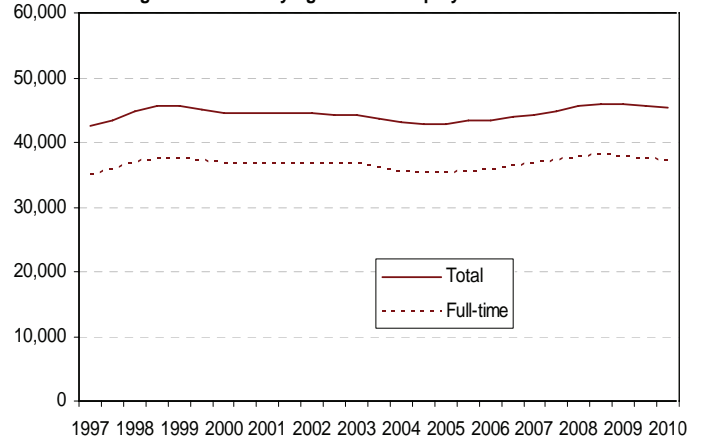
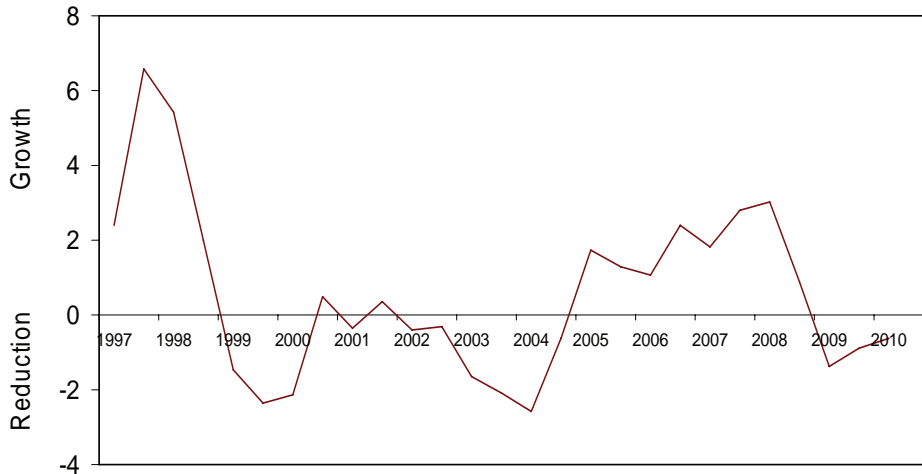


Figure 5 - Twelve month percentage changes in private sector employment



Employment in one-person businesses

In June 2010 there were 2,700 single-person undertakings recorded, some 210 more than a year earlier. The rise in such undertakings was driven by increases in the service sectors, Education, health and other services and Miscellaneous business activities (each up by +60), and in Construction (+40).

Single-person undertakings were not consistently recorded prior to 2000; therefore detailed figures both including and excluding single-person undertakings are presented in Appendix.

Residential qualifications

Overall, 82% of people employed in Jersey in June 2010 were locally qualified (as defined by the Regulation of Undertakings and Development Law, see Note 4), more than 3% were j-category and 15% were not locally qualified.

Of the 49,360 people employed in the private sector in June 2010, more than four-fifths (81%) were locally qualified and 2% (1,160 staff) were qualified as j-category. The remaining 16% (8,140), representing about one in six of all private sector staff, were not locally qualified.

The number of locally qualified staff in the private sector in June 2010 was 280 more than in June 2009. Over the same period, the number of j-category employees in the private sector increased by 40.

As Figure 6 shows, the total number of j-category employees in the private sector has more than doubled since the Manpower Survey first started recording the residential qualifications of employees in December 2001.

Figure 6- Private sector j-category employees

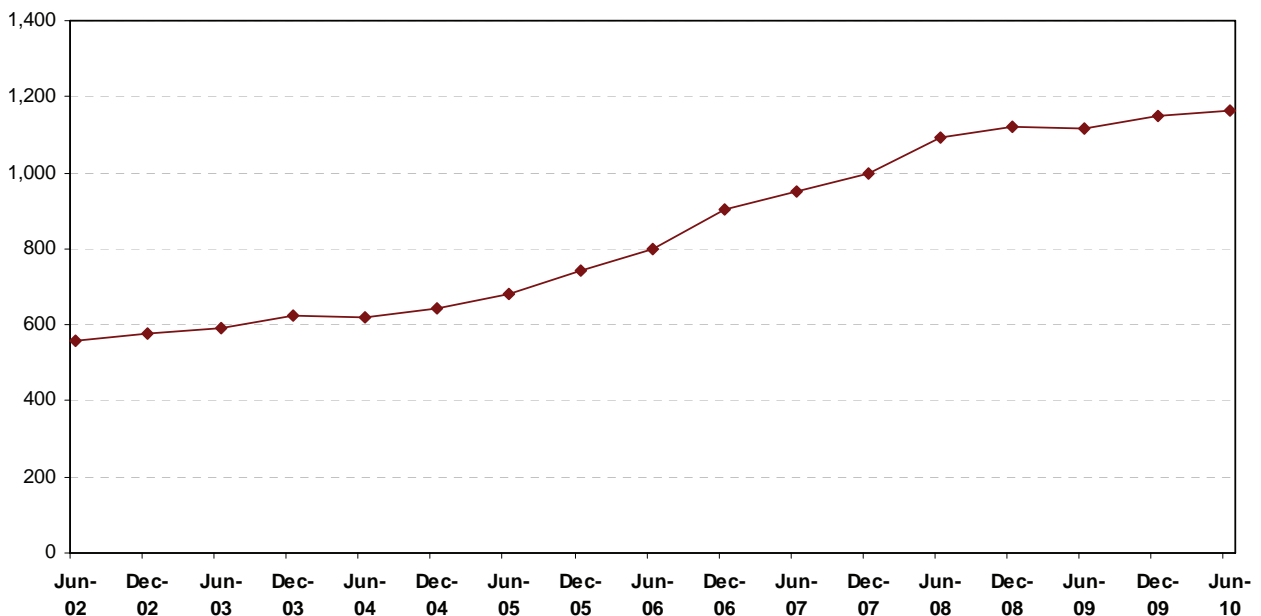
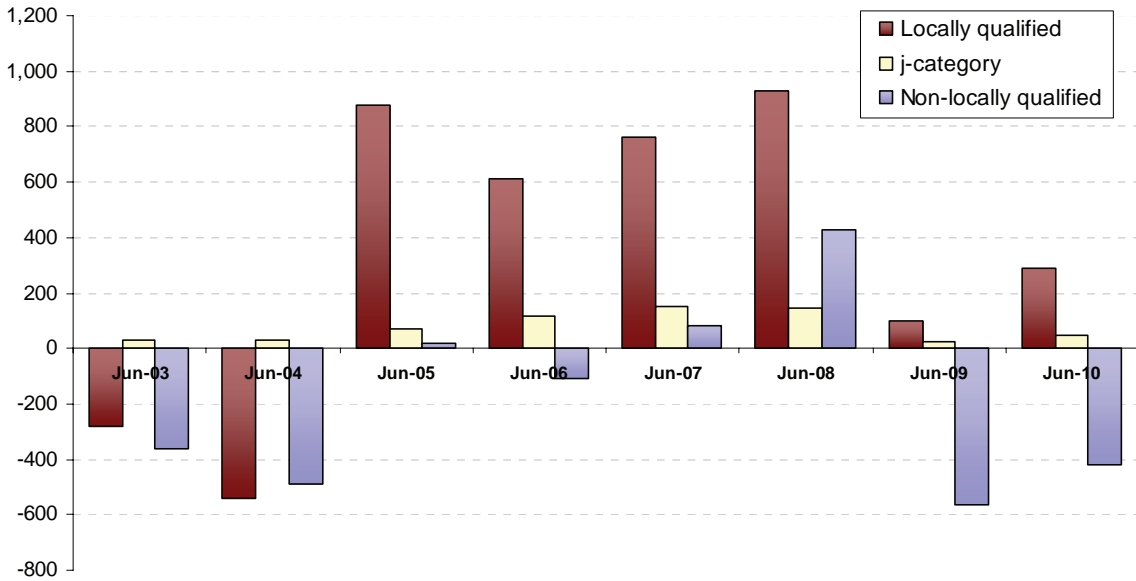


Figure 7 shows that the number of locally qualified staff employed in the private sector in Jersey has increased on an annual basis each year since 2005.

In contrast, after rising in both 2007 and 2008, the number of non-qualified employees has fallen in the last two years, down by 560 and 420 on an annual basis in June 2009 and June 2010, respectively.

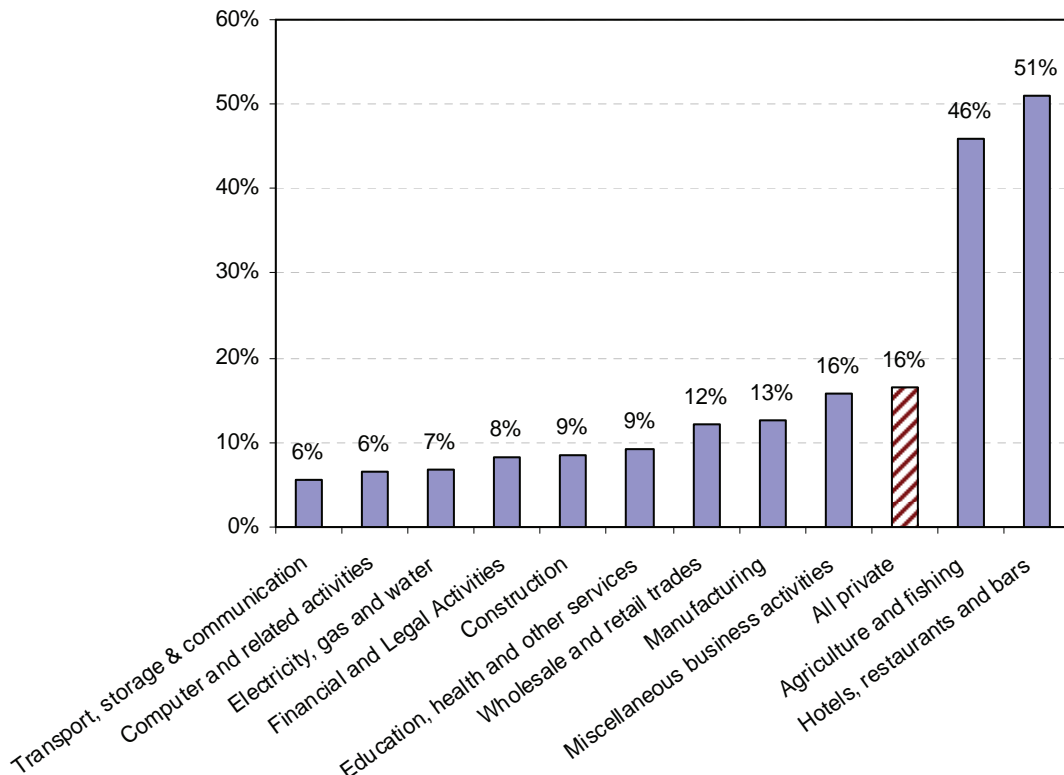
In June 2010, the largest decrease of non-qualified staff was recorded by the Finance sector, down by -170 on an annual basis.

Figure 7 - Annual change in private sector employment by residential qualification



Within the private sector in June 2010, the highest proportions of non-qualified employees (i.e. excluding j-category) were in Hotel, restaurants & bars (51%) and Agriculture (46%). The Transport, storage and communication sector had the lowest proportion of non-qualified staff, at 6% (see Figure 9). About 8% of employees in Finance and 9% in Construction were non-qualified.

Figure 8 – Percentage of non-qualified employees by private sector, June 2010



The number of j-category staff in the public sector in June 2010 was 560, accounting for almost one in twelve (8%) of all public sector employees, and down by 80 on that of June 2009.

Employment by nationality

Utilising data from the Social Security Department (SSD) it is possible to get an insight into the make up of Jersey's workforce by nationality⁷. However, in interpreting these data it is important to understand some key points:

- the nationality data compiled by SSD is based on contributions paid on behalf of contributors (employees only, excluding the self-employed);
- the number of contributions from unique contributors will differ from the number employed primarily because the Social Security data refer to contributions paid *over the entire month*, whilst the employment data is a point in time estimate at either 30 June or 31 December each year. As a result of this timing difference it is not possible to undertake a direct comparison of social security contributions and numbers in employment⁸.
- nationality recorded by SSD is self-reported and historically has not been a key variable for social security purposes. As a result it is not currently possible to separate Jersey and United Kingdom nationals. These two groups are the largest two nationalities working in Jersey.

Bearing in mind these caveats, during June 2010:

- at least 69% of contributors in June 2010 were from Jersey/UK nationals;
- a total of 3,370 unique contributors (8% of the total) were paid from or on behalf of nationals from A8 countries⁹, more than 90% of whom were Polish;
- the number of unique contributors for/by Portuguese nationals was 12% of the total.

For the reasons given above, the actual numbers of people in work at a given point in time will be lower than the figures based on the number of unique contributors.

Unemployment

The number of people registered in Jersey as unemployed and actively seeking work (ASW) in June 2010 was 1,110. Figure 10 shows the total number of people registered as ASW at the end of each month in 2009, and also more recent figures for July and August 2010¹⁰. It is apparent from the plot that there was an increase in total ASW between September 2009 and February 2010 and again more recently.

The most recent figures show that 1,290 people were registered as unemployed and actively seeking work in Jersey in August 2010.

In interpreting these unemployment figures, it should be emphasised that there is no legal requirement for all unemployed residents in Jersey to register as actively seeking work with the Social Security Department. Therefore, the number of people registered as unemployed should be regarded as an indicator rather than a measure of the actual level of unemployment in the Island.

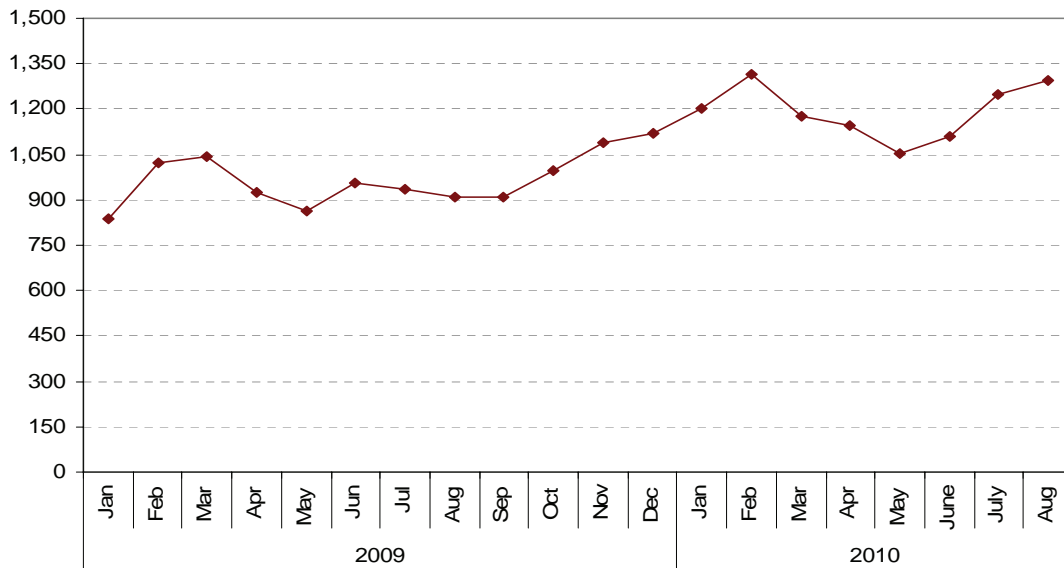
⁷ Under the Social Security (Jersey) Law 1974 one of the pieces of information held against everyone's unique registration number is their nationality.

⁸ Both sources count people with more than one job (with different undertakings) as multiples.

⁹ The eight countries which joined ("gained accession to") the European Union in May 2004 were: the Czech Republic, Estonia, Hungary, Latvia, Lithuania, Poland, Slovakia and Slovenia.

¹⁰ See Registered Unemployment – August 2010; States Of Jersey Statistics Unit, published October 2010.

Figure 9 - Total number of individuals registered as ASW, January 2009– August 2010



International comparisons

In the UK, in the second quarter of 2010 there were 28.9 million people employed, 1.5 million people claiming Jobseeker’s Allowance (the Claimant Count). In Jersey there were 1,110 persons registered as unemployed in June 2010. People *registered* as unemployed were therefore about 2.2% of total employment in Jersey in June 2010, compared to about 5.5% in the UK¹¹.

In Guernsey in June 2010 there were 32,340 people in employment (21% in Finance, a similar proportion to Jersey) and 480 people claiming unemployment or jobseeker benefits.

The internationally comparable measure of unemployment is the ILO unemployment rate (see Note 5); for the UK during the second quarter of 2010 the ILO rate was 7.8%, whilst that for Jersey in the early summer of 2010 (estimated from the Jersey Annual Social Survey, JASS) was 3.0%.

Vacancies

The total number of vacancies (full- and part-time) in the private sector in June 2010 (2,100) was up 150 on last June.

Statistics Unit
 6th October 2010

¹¹ Figures for the UK are from the Office for National Statistics: Labour Market statistics.

Notes

1. The Manpower Survey is a census of some 6,210 undertakings in Jersey, which employ a total of some 49,360 staff (Jun 2010) including almost 9,440 part-time staff (who may have more than one job). Prior to December 2001, the Survey was conducted quarterly; from June 2002 the survey has taken place at six-monthly intervals.
2. The “private sector” includes States Trading Committees (former and current), the Jersey Financial Services Commission, the Family Nursing and Home Care Service and the Jersey Competition Regulatory Authority. These bodies, which are subject to the Regulation of Undertakings and Development Law, accounted for a total of 1,350 staff at June 2010.
3. For the six-monthly data of Figures 1 and 5b, short-term variations (largely due to seasonal factors) were removed by calculating a weighted three-point moving average; entries for June 1996 and June 2010, therefore, do not appear in these plots.
4. The definition of “locally qualified” as applied under the *Regulation of Undertakings and Development (Jersey) Law, 1973 as amended* includes all persons in the following categories:
 - i) residentially qualified persons falling within any of the Housing Regulations, excluding Regulation (l) and Regulation (m);
 - ii) persons resident for the whole of the past consecutive 5 years;
 - iii) the spouses of (i) or (ii) above;
 - iv) the children under 18 years (or if students under 25 years) of those in (i), (ii) or (iii) above.The analysis in this report further divides the locally qualified between j-category and the remainder.

The residential status of staff in the private sector was recorded for the first time by the December 2001 Manpower Survey. Each undertaking reported the numbers of locally qualified and non-locally qualified employees; full-time employees with j-category housing qualifications were recorded separately from other locally qualified staff.
5. The International Labour Organisation (ILO) definition of unemployment includes all adults (aged 16 and over) who are not working but are looking for or waiting to take up a job.
6. The historic numbers for the private sector presented in the appendices show some minor differences from those presented in previous Manpower Survey reports; these arise from revisions to staffing levels reported by a small number of undertakings.
7. As detailed in the complementary Manpower Report published by the States of Jersey Treasury and Resources Department, the public sector employment figures from December 2007 onwards have been determined using the new Human Resources Information System. (HRIS). The resulting headcount figure for the public sector now counts employees working in more than one post within the States of Jersey only once; previously such employees were counted as multiples. Previous total headcount figures reported for the public sector (shown in Table 1) have not been revised on this basis and as such represent upper bounds in terms of the new HRIS reporting methodology.
8. Further information about the Manpower Survey is available from the States of Jersey Statistics Unit, telephone 440403, and about the States of Jersey Manpower Report from the Treasury and Human Resources Department. Enquiries about the Regulation of Undertakings and Development Law should be addressed to the Population Office, telephone 448930.

Appendix 1- Manpower Engaged by Sector

(in businesses in which two or more people are engaged)

	Jun-01	Jun-02	Dec-02	Jun-03	Dec-03	Jun-04	Dec-04	Jun-05	Dec-05	Jun-06	Dec-06	Jun-07	Dec-07	Jun-08	Dec-08	Jun-09	Dec-09	Jun-10
Full-time staff																		
Agriculture and Fishing	1,940	1,870	1,410	1,810	1,360	1,710	1,250	1,910	1,230	1,860	1,280	1,950	1,300	1,570	1,270	1,900	1,250	1,810
Manufacturing	1,770	1,830	1,730	1,700	1,560	1,550	1,380	1,390	1,340	1,280	1,240	1,220	1,170	1,250	1,090	1,070	1,030	1,050
Construction and Quarrying	4,320	4,410	4,280	4,160	3,910	4,050	4,020	4,340	4,290	4,600	4,460	4,550	4,450	4,580	4,520	4,510	4,500	4,670
Electricity, Gas and Water	590	560	540	530	500	490	490	480	480	490	490	480	490	480	490	500	470	470
Wholesale and Retail Trades	6,250	6,200	6,080	6,180	6,140	6,130	6,350	6,330	6,430	6,360	6,520	6,360	6,610	6,420	6,360	6,170	6,300	6,190
Hotels, Restaurants & Bars	5,720	5,530	3,560	5,410	3,550	5,210	3,370	5,080	3,410	5,200	3,430	5,160	3,640	5,080	3,500	4,720	3,470	4,750
Transport, Storage & Communication	2,530	2,490	2,260	2,410	2,210	2,370	2,210	2,370	2,160	2,320	2,210	2,330	2,260	2,340	2,230	2,300	2,200	2,210
Computer and related activities	300	320	300	320	320	310	320	330	340	350	320	340	360	370	380	380	370	360
Financial and Legal Activities	10,670	10,980	11,000	10,730	10,500	10,440	10,420	10,570	10,560	10,800	11,170	11,430	11,840	11,970	12,170	12,000	11,690	11,600
Miscellaneous Business Activities	1,370	1,380	1,330	1,380	1,330	1,380	1,290	1,370	1,300	1,410	1,390	1,510	1,510	1,700	1,630	1,690	1,660	1,750
Education, Health and Other Services	2,750	2,790	2,710	2,860	2,800	2,910	2,790	2,880	2,820	2,950	2,970	3,130	3,070	3,250	3,190	3,270	3,260	3,330
Total full-time staff	38,210	38,340	35,190	37,480	34,180	36,540	33,890	37,060	34,360	37,610	35,460	38,450	36,690	39,030	36,830	38,510	36,210	38,190
Part-time staff																		
Agriculture and Fishing	200	230	150	240	160	210	170	170	150	230	150	190	160	660	150	200	150	300
Manufacturing	480	430	370	360	320	330	300	320	260	250	250	270	250	330	190	200	160	200
Construction and Quarrying	260	250	280	250	260	300	270	250	250	250	240	240	240	270	260	260	270	290
Electricity, Gas and Water	20	20	20	10	10	10	20	20	10	10	40	40	30	30	40	40	40	30
Wholesale and Retail Trades	1,560	1,560	1,560	1,640	1,690	1,640	1,850	1,750	1,860	1,710	1,790	1,710	1,600	1,860	1,640	1,870	1,980	1,940
Hotels, Restaurants & Bars	1,000	1,010	780	950	800	920	800	1,030	860	960	930	1,050	880	970	1,020	1,260	930	1,200
Transport, Storage & Communication	320	270	240	230	220	220	210	230	230	270	230	300	290	360	290	330	320	400
Computer and related activities	60	60	60	60	50	40	60	60	60	50	50	50	50	60	50	50	50	50
Financial and Legal Activities	1,360	1,290	1,270	1,330	1,260	1,210	1,200	1,190	1,180	1,260	1,080	1,110	1,130	1,120	1,120	1,110	1,060	1,030
Miscellaneous Business Activities	1,260	1,170	1,210	1,280	1,240	1,240	1,210	1,310	1,260	1,310	1,290	1,330	1,350	1,420	1,420	1,460	1,460	1,430
Education, Health and Other Services	1,540	1,450	1,380	1,470	1,420	1,480	1,400	1,520	1,400	1,470	1,390	1,480	1,420	1,500	1,480	1,670	1,490	1,600
Total part-time staff	8,050	7,720	7,310	7,830	7,430	7,590	7,460	7,850	7,520	7,770	7,430	7,760	7,400	8,580	7,660	8,450	7,900	8,470
All staff																		
Agriculture and Fishing	2,140	2,100	1,560	2,050	1,530	1,920	1,420	2,080	1,380	2,090	1,430	2,140	1,460	2,230	1,420	2,100	1,400	2,120
Manufacturing	2,240	2,260	2,100	2,060	1,880	1,870	1,680	1,710	1,600	1,530	1,480	1,490	1,420	1,580	1,270	1,270	1,190	1,250
Construction and Quarrying	4,570	4,660	4,560	4,410	4,170	4,350	4,290	4,590	4,540	4,850	4,700	4,790	4,690	4,850	4,780	4,760	4,770	4,960
Electricity, Gas and Water	610	580	560	540	510	500	510	500	490	500	530	510	520	510	530	530	510	510
Wholesale and Retail Trades	7,810	7,750	7,640	7,810	7,840	7,770	8,210	8,080	8,290	8,070	8,310	8,060	8,210	8,290	8,000	8,030	8,280	8,120
Hotels, Restaurants & Bars	6,720	6,530	4,340	6,360	4,350	6,130	4,170	6,110	4,270	6,160	4,360	6,210	4,510	6,060	4,520	5,980	4,400	5,940
Transport, Storage & Communication	2,850	2,760	2,490	2,640	2,420	2,600	2,410	2,610	2,390	2,590	2,440	2,620	2,550	2,690	2,520	2,630	2,530	2,610
Computer and related activities	360	370	360	380	370	350	370	390	400	400	370	390	410	430	430	430	420	410
Financial and Legal Activities	12,040	12,270	12,270	12,070	11,750	11,640	11,620	11,760	11,740	12,060	12,250	12,540	12,970	13,090	13,300	13,110	12,750	12,640
Miscellaneous Business Activities	2,630	2,560	2,540	2,650	2,570	2,610	2,500	2,680	2,570	2,720	2,680	2,840	2,850	3,120	3,050	3,160	3,120	3,180
Education, Health and Other Services	4,300	4,230	4,090	4,340	4,220	4,390	4,190	4,400	4,230	4,420	4,360	4,610	4,490	4,750	4,670	4,950	4,740	4,930
Total staff	46,260	46,070	42,500	45,300	41,600	44,140	41,350	44,900	41,880	45,370	42,890	46,210	44,090	47,600	44,490	46,960	44,100	46,660

Note: Staff numbers and vacancies in the Appendices have been rounded independently to the nearest 10. Hence, components may not add to group totals.

Appendix 2- Staff numbers and vacancies

(all businesses, including one-person businesses)

	Staff numbers									
	Jun-06	Dec-06	Jun-07	Dec-07	Jun-08	Dec-08	Jun-09	Dec-09	Jun-10	
Full-time staff										
Agriculture and Fishing	1,930	1,360	2,030	1,380	1,650	1,360	1,980	1,340	1,900	
Manufacturing	1,340	1,300	1,280	1,230	1,310	1,150	1,140	1,100	1,120	
Construction and Quarrying	4,970	4,840	4,940	4,850	4,980	4,950	4,950	4,960	5,140	
Electricity, Gas and Water	490	490	480	490	480	490	500	480	470	
Wholesale and Retail Trades	6,550	6,700	6,540	6,810	6,620	6,580	6,380	6,520	6,420	
Hotels, Restaurants & Bars	5,220	3,480	5,190	3,690	5,120	3,540	4,750	3,530	4,790	
Transport, Storage & Communication	2,400	2,310	2,440	2,370	2,460	2,350	2,430	2,340	2,340	
Computer and related activities	420	390	420	440	450	450	450	450	440	
Financial and Legal Activities	10,870	11,240	11,500	11,910	12,050	12,250	12,070	11,760	11,680	
Miscellaneous Business Activities	1,630	1,610	1,730	1,730	1,940	1,880	1,950	1,950	2,050	
Education, Health and Other Services	3,110	3,140	3,310	3,260	3,450	3,390	3,490	3,470	3,560	
Total full-time staff	38,920	36,860	39,870	38,140	40,500	38,400	40,090	37,900	39,920	
Part-time staff										
Agriculture and Fishing	240	170	210	180	680	180	230	180	340	
Manufacturing	280	270	300	280	360	220	220	180	220	
Construction and Quarrying	280	280	280	280	310	300	300	320	340	
Electricity, Gas and Water	10	40	40	30	30	40	40	40	30	
Wholesale and Retail Trades	1,880	1,980	1,900	1,790	2,070	1,830	2,080	2,200	2,130	
Hotels, Restaurants & Bars	970	950	1,070	900	990	1,060	1,310	980	1,250	
Transport, Storage & Communication	290	250	310	310	370	320	350	350	430	
Computer and related activities	80	80	80	90	90	80	100	90	100	
Financial and Legal Activities	1,310	1,120	1,160	1,190	1,180	1,180	1,170	1,120	1,090	
Miscellaneous Business Activities	1,430	1,410	1,460	1,480	1,560	1,560	1,620	1,620	1,600	
Education, Health and Other Services	1,690	1,610	1,720	1,690	1,750	1,740	1,940	1,800	1,910	
Total part-time staff	8,460	8,150	8,510	8,220	9,380	8,510	9,350	8,870	9,440	
All staff										
Agriculture and Fishing	2,180	1,530	2,230	1,560	2,330	1,540	2,210	1,520	2,240	
Manufacturing	1,610	1,570	1,580	1,510	1,670	1,370	1,360	1,280	1,340	
Construction and Quarrying	5,250	5,110	5,220	5,130	5,290	5,250	5,240	5,280	5,480	
Electricity, Gas and Water	500	530	510	520	510	530	530	510	510	
Wholesale and Retail Trades	8,420	8,680	8,440	8,600	8,690	8,410	8,460	8,720	8,540	
Hotels, Restaurants & Bars	6,190	4,430	6,260	4,590	6,110	4,600	6,060	4,510	6,040	
Transport, Storage & Communication	2,690	2,560	2,760	2,680	2,830	2,670	2,790	2,690	2,770	
Computer and related activities	500	480	500	520	540	540	550	540	540	
Financial and Legal Activities	12,180	12,370	12,660	13,100	13,220	13,430	13,250	12,880	12,770	
Miscellaneous Business Activities	3,050	3,010	3,190	3,220	3,490	3,440	3,570	3,570	3,650	
Education, Health and Other Services	4,800	4,750	5,030	4,940	5,200	5,130	5,420	5,270	5,470	
Total staff	47,380	45,000	48,380	46,360	49,880	46,910	49,440	46,770	49,360	

Vacancies									
Jun-06	Dec-06	Jun-07	Dec-07	Jun-08	Dec-08	Jun-09	Dec-09	Jun-10	
30	60	40	60	60	40	30	40	50	
60	70	70	100	70	50	60	120	120	
260	310	310	330	270	230	220	250	240	
20	20	20	20	20	10	10	20	10	
360	320	370	370	370	330	350	320	360	
310	370	260	270	260	230	200	210	210	
90	70	100	80	80	60	50	40	50	
30	30	40	30	30	40	30	20	30	
820	850	810	820	720	490	380	370	440	
120	130	130	120	160	110	120	130	110	
150	170	150	170	170	150	150	160	120	
2,250	2,400	2,290	2,380	2,210	1,730	1,590	1,670	1,730	
+	+	+	10	10	+	10	+	10	
10	20	10	30	20	+	10	10	10	
10	10	10	20	10	10	20	20	10	
+	+	+	+	10	+	+	+	+	
80	100	100	80	80	80	80	80	80	
60	60	50	120	140	100	60	80	110	
10	10	10	20	20	10	10	10	10	
10	+	+	+	+	10	10	10	+	
40	30	30	30	30	20	20	20	20	
30	50	90	70	60	70	50	40	40	
100	100	90	110	110	110	90	70	80	
360	380	400	480	480	410	360	350	370	
40	60	40	70	60	40	40	50	60	
60	90	80	130	80	50	70	130	130	
270	330	320	350	280	250	240	270	250	
20	20	20	20	20	10	10	20	10	
440	420	470	450	440	410	420	400	430	
370	430	300	390	400	330	260	290	310	
100	70	110	100	100	70	60	60	60	
40	40	50	40	40	50	40	30	30	
860	880	840	850	760	500	400	390	460	
150	190	210	190	230	180	180	170	150	
260	270	250	280	280	260	240	230	210	
2,600	2,780	2,690	2,860	2,690	2,140	1,950	2,020	2,100	

Vacancies as % of employed									
Jun-06	Dec-06	Jun-07	Dec-07	Jun-08	Dec-08	Jun-09	Dec-09	Jun-10	
2	4	2	4	4	3	2	3	3	
4	5	5	8	5	4	5	11	11	
5	6	6	7	5	5	4	5	5	
4	4	4	4	4	2	2	4	2	
5	5	6	5	6	5	5	5	6	
6	11	5	7	5	6	4	6	4	
4	3	4	3	3	3	2	2	2	
7	8	10	7	7	9	7	4	7	
8	8	7	7	6	4	3	3	4	
7	8	8	7	8	6	6	7	5	
5	5	5	5	5	4	4	5	3	
6	7	6	6	5	5	4	4	4	
-	-	-	6	1	-	4	-	3	
4	7	3	11	6	-	5	6	5	
4	4	4	7	3	3	7	6	3	
-	-	-	-	33	-	-	-	-	
4	5	5	4	4	4	4	4	4	
6	6	5	13	14	9	5	8	9	
3	4	3	6	5	3	3	3	2	
13	-	-	-	-	13	10	11	-	
3	3	3	3	3	2	2	2	2	
2	4	6	5	4	4	3	2	3	
6	6	5	7	6	6	5	4	4	
4	5	5	6	5	5	4	4	4	
2	4	2	4	3	3	2	3	3	
4	6	5	9	5	4	5	10	10	
5	6	6	7	5	5	5	5	5	
4	4	4	4	4	2	2	4	2	
5	5	6	5	5	5	5	5	5	
6	10	5	8	7	7	4	6	5	
4	3	4	4	4	3	2	2	2	
8	8	10	8	7	9	7	6	6	
7	7	7	6	6	4	3	3	4	
5	6	7	6	7	5	5	5	4	
5	6	5	6	5	5	4	4	4	
5	6	6	6	5	5	4	4	4	

Note: + means a non-zero number less than 5.

Appendix 3 - Residential Qualifications (see Note 4 for definitions)

(all businesses, including one-person businesses)

	Jun-08				Dec-08				Jun-09				Dec-09				Jun-10			
	Locally Qualified	J- category	Non-locally Qualified	Total	Locally Qualified	J- category	Non-locally Qualified	Total	Locally Qualified	J- category	Non-locally Qualified	Total	Locally Qualified	J- category	Non-locally Qualified	Total	Locally Qualified	J- category	Non-locally Qualified	Total
Full-time staff																				
Agriculture and Fishing	1,030	+	610	1,650	940	+	420	1,360	1,000	+	980	1,980	950	+	390	1,340	960	+	940	1,900
Manufacturing	1,060	20	230	1,310	1,000	20	130	1,150	1,000	20	120	1,140	970	20	110	1,100	990	20	120	1,120
Construction and Quarrying	4,450	30	500	4,980	4,430	30	490	4,950	4,420	40	490	4,950	4,440	40	480	4,960	4,630	50	470	5,140
Electricity, Gas and Water	450	+	30	480	460	+	30	490	460	+	30	500	440	+	30	480	440	+	30	470
Wholesale and Retail Trades	5,460	60	1,110	6,620	5,480	60	1,040	6,580	5,400	60	920	6,380	5,480	60	980	6,520	5,490	60	870	6,420
Hotels, Restaurants & Bars	2,110	30	2,970	5,120	1,810	30	1,700	3,540	2,070	20	2,650	4,750	1,870	30	1,630	3,530	2,150	30	2,610	4,790
Transport, Storage & Communication	2,260	40	160	2,460	2,200	40	110	2,350	2,240	40	150	2,430	2,180	50	110	2,340	2,150	50	150	2,340
Computer and related activities	370	10	70	450	380	10	60	450	390	10	50	450	400	10	40	450	390	10	40	440
Financial and Legal Activities	10,200	710	1,140	12,050	10,290	740	1,230	12,250	10,130	740	1,210	12,070	9,890	760	1,110	11,760	9,900	750	1,020	11,680
Miscellaneous Business Activities	1,720	40	170	1,940	1,720	40	130	1,880	1,760	40	160	1,950	1,770	40	140	1,950	1,850	40	160	2,050
Education, Health and Other Services	2,870	150	440	3,450	2,860	140	380	3,390	2,910	140	430	3,490	2,950	140	390	3,470	3,010	140	410	3,560
Total full-time staff	31,980	1,090	7,430	40,500	31,560	1,120	5,710	38,400	31,780	1,120	7,190	40,090	31,340	1,150	5,410	37,900	31,950	1,160	6,810	39,920
Part-time staff																				
Agriculture and Fishing	230		440	680	180		10	180	200		30	230	180		+	180	250		90	340
Manufacturing	280		80	360	180		40	220	170		50	220	150		30	180	170		50	220
Construction and Quarrying	310		10	310	290		10	300	290		10	300	320		+	320	340		0	340
Electricity, Gas and Water	30		+	30	40		+	40	30		+	40	30		+	40	30		+	30
Wholesale and Retail Trades	1,890		170	2,070	1,690		140	1,830	1,900		180	2,080	2,020		170	2,200	1,950		180	2,130
Hotels, Restaurants & Bars	610		380	990	670		390	1,060	820		490	1,310	660		320	980	780		470	1,250
Transport, Storage & Communication	370		+	370	310		+	320	350		10	350	350		+	350	420		+	430
Computer and related activities	90		+	90	80		+	80	90		+	100	90		+	90	100		+	100
Financial and Legal Activities	1,160		20	1,180	1,160		20	1,180	1,160		20	1,170	1,100		20	1,120	1,070		30	1,090
Miscellaneous Business Activities	1,060		500	1,560	1,100		460	1,560	1,140		480	1,620	1,220		400	1,620	1,180		420	1,600
Education, Health and Other Services	1,660		90	1,750	1,660		80	1,740	1,840		100	1,940	1,720		80	1,800	1,820		90	1,910
Total part-time staff	7,690		1,700	9,380	7,340		1,160	8,510	7,990		1,370	9,350	7,840		1,030	8,870	8,100		1,330	9,440
All staff																				
Agriculture and Fishing	1,270	+	1,060	2,330	1,120	+	420	1,540	1,200	+	1,010	2,210	1,130	+	390	1,520	1,210	+	1,030	2,240
Manufacturing	1,340	20	310	1,670	1,170	20	170	1,370	1,170	20	180	1,360	1,130	20	140	1,280	1,160	20	170	1,340
Construction and Quarrying	4,750	30	510	5,290	4,720	30	500	5,250	4,710	40	500	5,240	4,760	40	490	5,280	4,970	50	470	5,480
Electricity, Gas and Water	480	+	30	510	490	+	30	530	490	+	40	530	470	+	30	510	470	+	40	510
Wholesale and Retail Trades	7,350	60	1,280	8,690	7,170	60	1,170	8,410	7,300	60	1,100	8,460	7,510	60	1,160	8,720	7,440	60	1,050	8,540
Hotels, Restaurants & Bars	2,730	30	3,350	6,110	2,480	30	2,100	4,600	2,900	20	3,140	6,060	2,530	30	1,950	4,510	2,930	30	3,080	6,040
Transport, Storage & Communication	2,630	40	160	2,830	2,510	40	120	2,670	2,590	40	160	2,790	2,530	50	110	2,690	2,570	50	150	2,770
Computer and related activities	460	10	70	540	460	10	60	540	490	10	50	550	490	10	40	540	490	10	40	540
Financial and Legal Activities	11,350	710	1,160	13,220	11,450	740	1,250	13,430	11,280	740	1,220	13,250	11,000	760	1,120	12,880	10,970	750	1,050	12,770
Miscellaneous Business Activities	2,780	40	670	3,490	2,810	40	590	3,440	2,900	40	630	3,570	2,990	40	540	3,570	3,030	40	570	3,650
Education, Health and Other Services	4,520	150	530	5,200	4,520	140	470	5,130	4,750	140	530	5,420	4,660	140	470	5,270	4,830	140	500	5,470
Total staff	39,670	1,090	9,120	49,880	38,910	1,120	6,880	46,910	39,770	1,120	8,560	49,440	39,180	1,150	6,440	46,770	40,050	1,160	8,140	49,360

Notes: j-category employees are employed on a full-time basis only;
+ means a non-zero number less than 5.