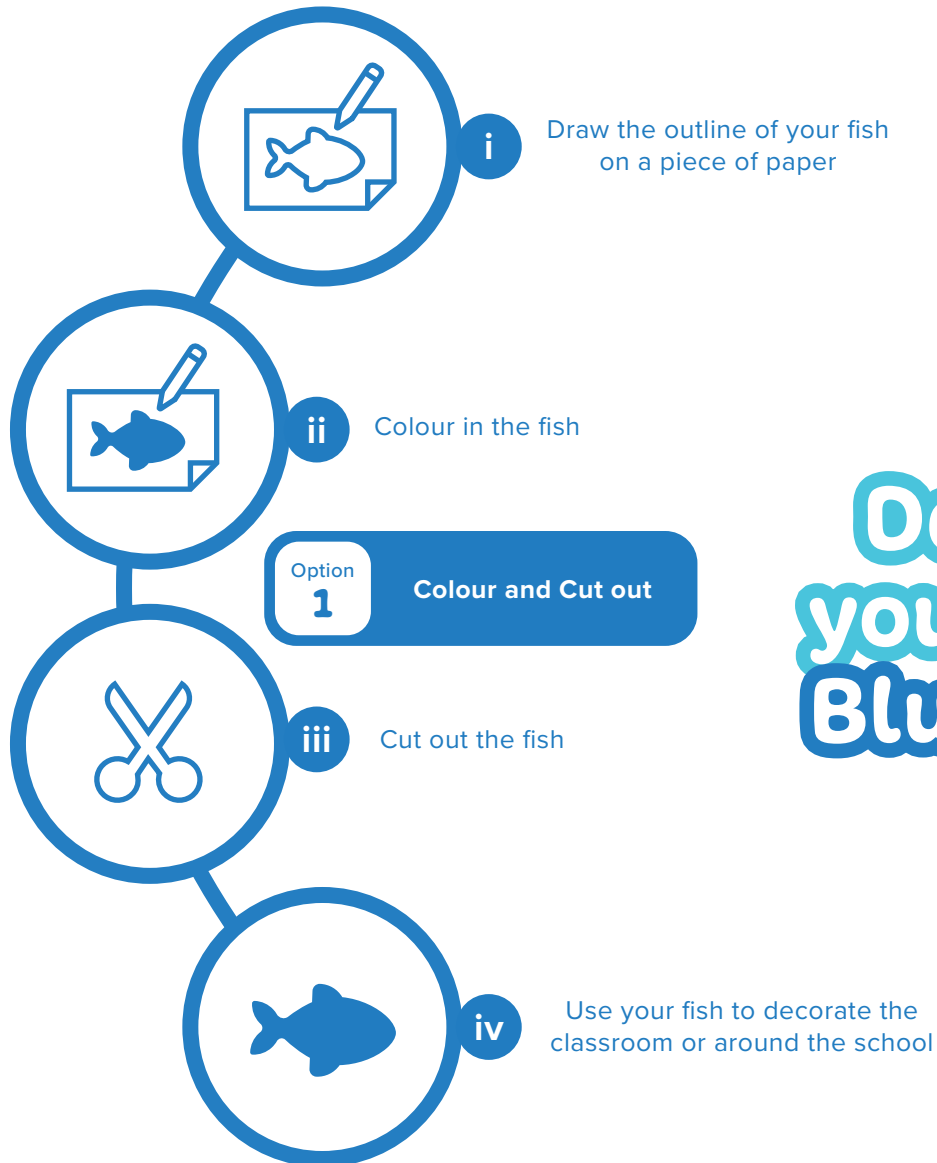


# The Blue Fish Campaign

Part of the 2014 National Curriculum



ACTIVITY  
**2**

## Design your own Blue Fish

Draw the outline of your fish on a piece of plain card

Use recycled materials such as; crisp packets, plastic bags, chocolate wrappers and stick them onto the back of the card

**Option 2** Use recycled materials as a Collage

Once the card is covered, turn it over and cut out the fish

Use your fish to decorate the classroom or around the school, with the recycled material showing

