

notes
 figured dimensions only are to be taken from this drawing
 all dimensions are to be checked on site before any work is put in hand, if in doubt seek confirmation
 this drawing must be read in conjunction with all other architects detail drawings, schedules and specifications
 all drawings are to be read in conjunction with relevant drawings from other consultants, in case of inconsistencies seek clarification
 this drawing must not be copied in whole or in part without the prior written permission of **origin architecture studio**
 copyright - origin architecture studio

revision	description	date
01	first issue for information	23.09.17
02	issue for information - update to drainage detail	29.09.17
03	issue for p+e application client details amended site boundary clarified surface water drainage channel / soakaway added to roadside	06.10.17
04	issue for p+e application updated to reflect additional coordinated information required by DfI Highways	08.12.17
05	additional highways comments incorporated - footpath widened from bus shelter into site bus shelter relocated back for increased access width	11.12.17
06	POA drawing Plan F	07.03.18

project details
retreat farm (tamba park)
 la rue de la frontiere
 st. lawrence/st. mary
 JE3 3EG

client
 JAJ Properties Limited

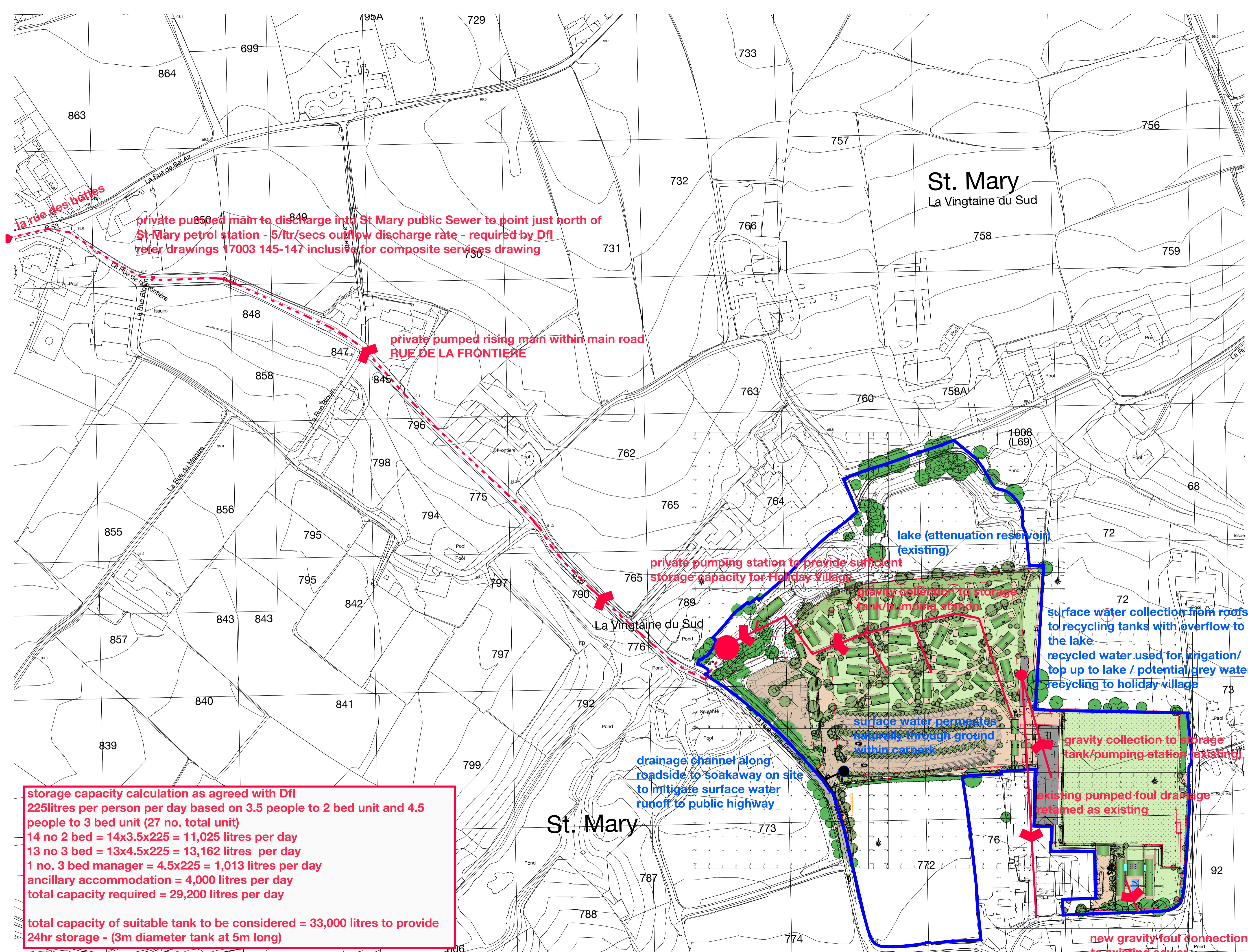
origin
 architecture studio
 'the beach hut'
 two watkin villa
 victoria avenue
 st helier JE2 3LU
 e: origin.arcstudio@icloud.com
 m: 07797757922
 t: 01534 484658

drawing title
as proposed overall site masterplan drainage

scale
 1:800 at A1

date
 23.09.2017

status
planning



private pumped main to discharge into St Mary public Sewer to point just north of St Mary petrol station - 5/ltr/secs outflow discharge rate - required by Dfl refer drawings 17003 145-147 inclusive for composite services drawing

private pumped rising main within main road RUE DE LA FRONTIERE

private pumping station to provide sufficient storage capacity for Holiday Villages

lake (attenuation reservoir) (existing)

surface water collection from roofs to recycling tanks with overflow to the lake
 recycled water used for irrigation/top up to lake / potential grey water recycling to holiday village

surface water permeates naturally through ground within carpark

gravity collection to storage tank/pumping station (existing)

existing pumped foul drainage retained as existing

drainage channel along roadside to soakaway on site to mitigate surface water runoff to public highway

new gravity foul connection to existing sewer - acceptable to DfI

storage capacity calculation as agreed with Dfl
 225litres per person per day based on 3.5 people to 2 bed unit and 4.5 people to 3 bed unit (27 no. total unit)
 14 no 2 bed = 14x3.5x225 = 11,025 litres per day
 13 no 3 bed = 13x4.5x225 = 13,162 litres per day
 1 no. 3 bed manager = 4.5x225 = 1,013 litres per day
 ancillary accommodation = 4,000 litres per day
 total capacity required = 29,200 litres per day
 total capacity of suitable tank to be considered = 33,000 litres to provide 24hr storage - (3m diameter tank at 5m long)

Plan F (POA) proposed - site masterplan drainage