

GUND (Geoid Undulation) = The height of the Geoid (MSL) above the Reference Ellipsoid (WGS 84) at the stated position.	398 (121)
BEARINGS ARE MAGNETIC ELEVATIONS AND HEIGHTS ARE IN FEET	
ELEVATIONS IN FEET AMSL HEIGHTS IN FEET ABOVE AD	

JERSEY I-LJ
110.90°
(Ch 46X)
491225.44N 0021221.94W
(GUND Elevation 161)

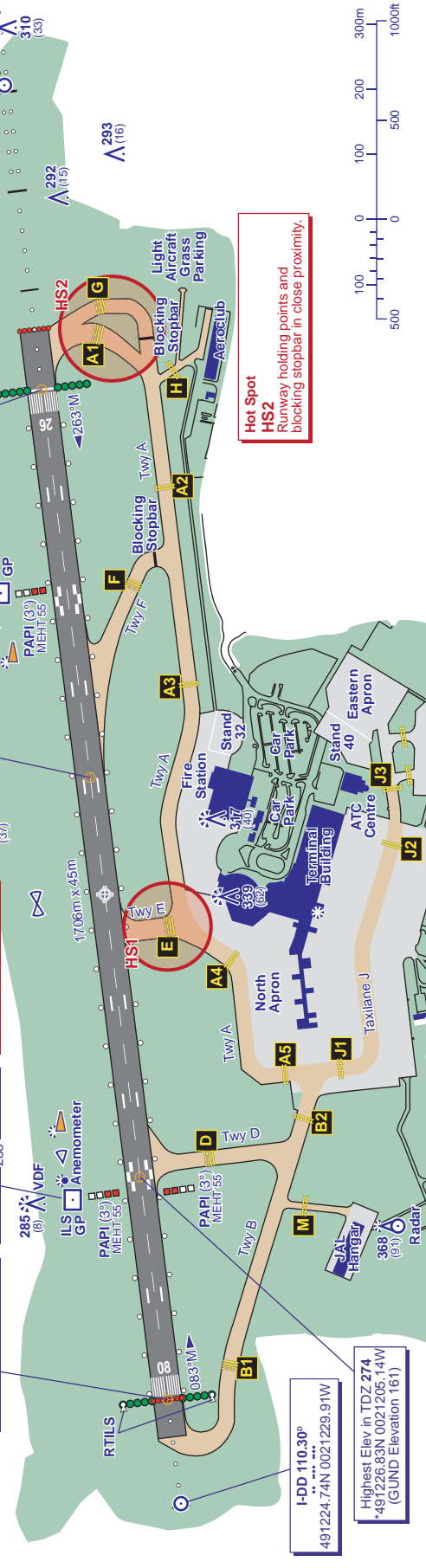
JERSEY I-LJ
110.30°
(Ch 46X)
491229.97N 0021206.86W
(GUND Elevation 161)

Highest Elev in TDZ 277
*491229.34N 0021134.98W
(GUND Elevation 161)

JERSEY I-DD
110.30°
(Ch 40X)
491233.78N 0021121.09W
(GUND Elevation 161)

Rwy 26 Thr Elev 272
491231.80N 0021105.66W
(GUND Elevation 161)

I-JJ 110.90°
491233.68N 0021042.71W



Hot Spot HS2
Runway holding points and blocking stopbar in close proximity.

Hot Spot HS1
Holding point Echo falls within the runway strip.

COM	JERSEY INFO
ATIS	134.680
TWR	119.455
	121.905 (GMC Summer only)
	121.600
	JERSEY GROUND
	JERSEY FIRE
LIGHTING	
APCH 08	165m HI C/L with bar. RTILS fitted to Threshold wingbars.
APCH 26	914m HI colour coded C/L with 5 bars.
THR 08/26	HI green with green W bars.
RWY 08/26	HI elev bi-d with LI omni-d component. HI colour coded C/L 15m spacing. End lights red.
TWY	Area west of RWY 08 THR outlined by red lights. Blue edge on link taxiways and apron, green C/L on taxiway B to RWY 08 & on taxiway A to holding point A1 only. No C/L lights leading to holding point G (See Hotspot HS2). No C/L lights on Twys D, E, G or M.

APRON / RWY / TWY	SURFACE	BEARING STRENGTH	ELEVATION
RWY 08/26	Grooved Asphalt & Concrete	30/F/A/X/T & 37/R/A/W/T	-
North Apron	Concrete	70/R/B/X/T	-
South Apron	Concrete	54/R/B/W/T	-
Cargo Apron	Concrete	11/R/C/W/T	-
Taxiway A	Concrete	66/R/C/W/T	-
Taxiway A1	Concrete	70/R/B/W/T	-
Taxiway A4 to A5	Concrete	70/R/B/X/T	-
Taxiway B	Concrete	29/R/C/W/T	-
Taxiway D	Concrete & Asphalt	29/R/C/W/T & 36/F/A/X/T	-
Taxiway E	Asphalt	28/F/A/X/T	-
Taxiway F (RET)	Grooved Asphalt	57/F/A/X/T	-
Taxiway G	Concrete	30/R/C/W/T	-
Taxilane J	Concrete	54/R/B/W/T	-

CHANGE (1/20): HOTSPOT HS2. TAXIWAY LIGHTING.

Annual Rate of Change 0.14°E

VAR 0.6°W - 2019

