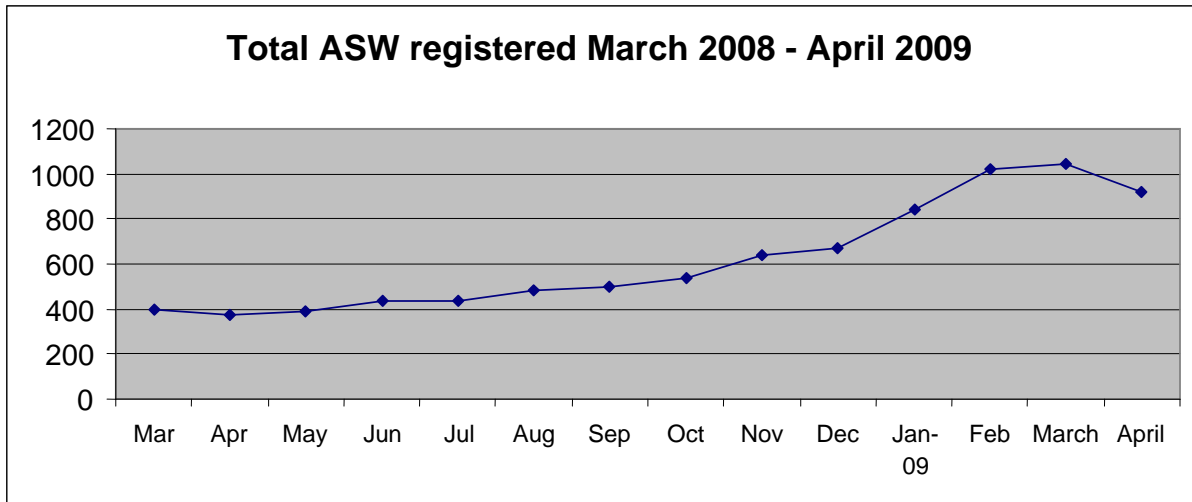


Social Security Department
Registered Unemployed Individuals Actively Seeking Work (ASW)
30 April 2009

923 people were registered with the Department as unemployed and actively seeking work (ASW) on 30 April 2009. Of these 619 were men and 304 women.



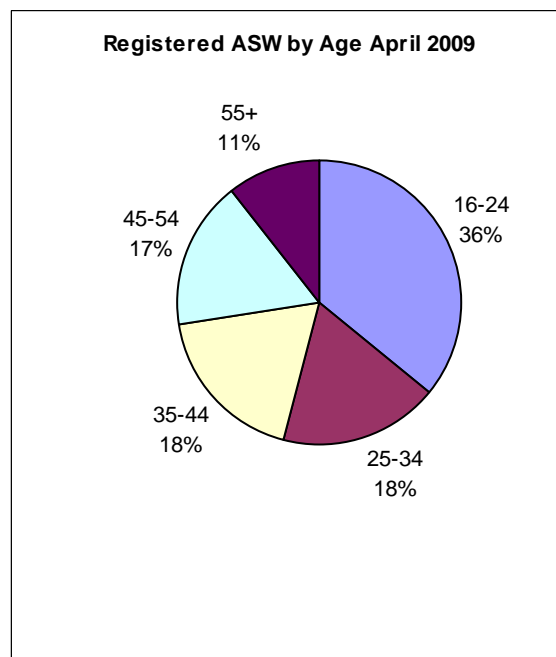
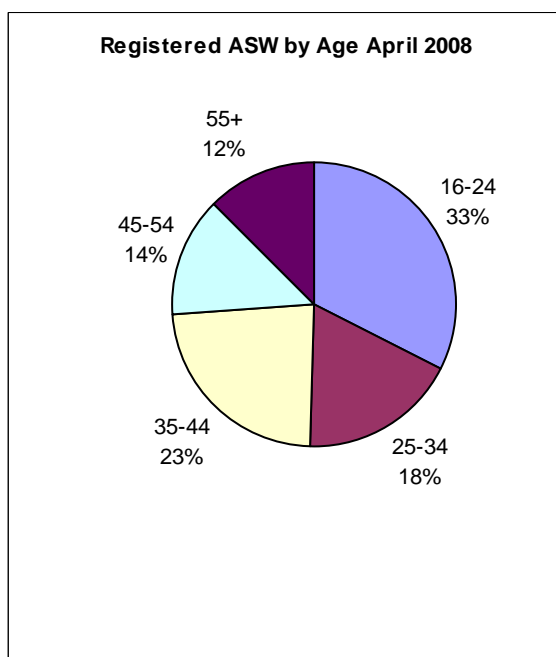
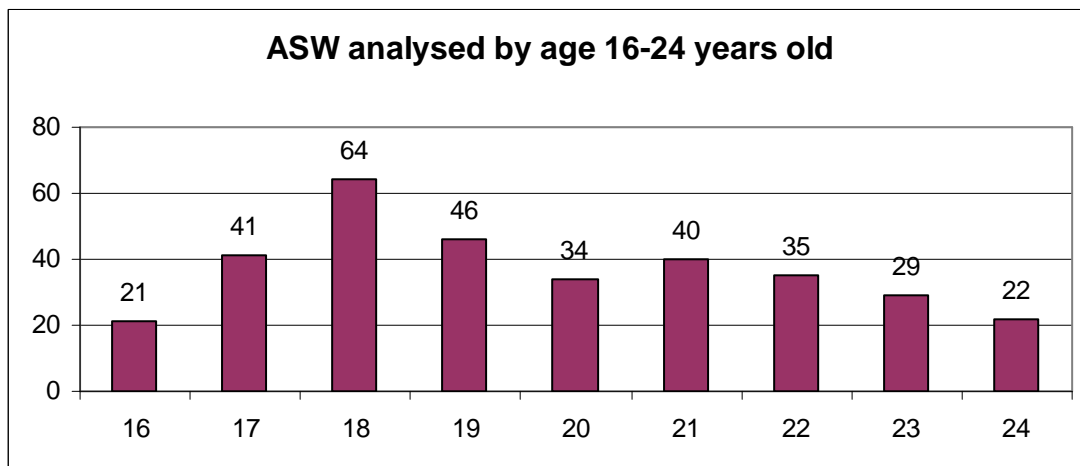
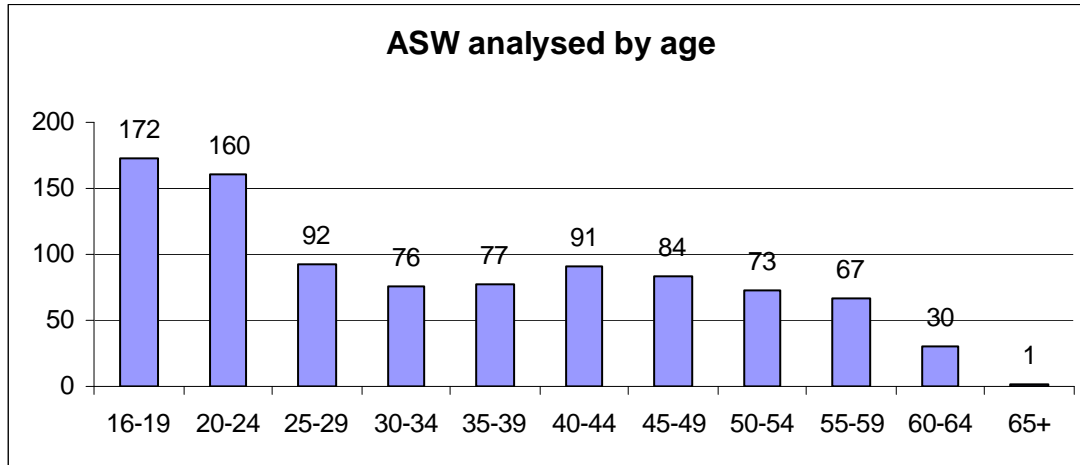
Following the sharp rise in registered ASW in January and February 2009, the figure for April shows a small decrease of 122 from 1,045 to 923.

Of the 923 people registered as ASW, 601 are currently receiving Income Support¹.

¹ The total number of adults receiving Income Support without work will be greater than this figure, however this is the number registered on 30 April as ASW.

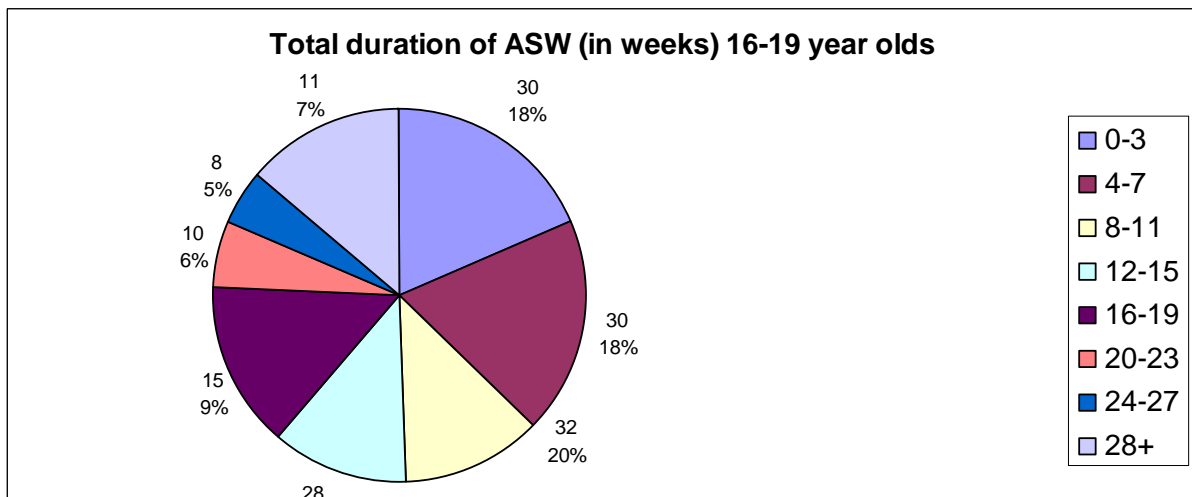
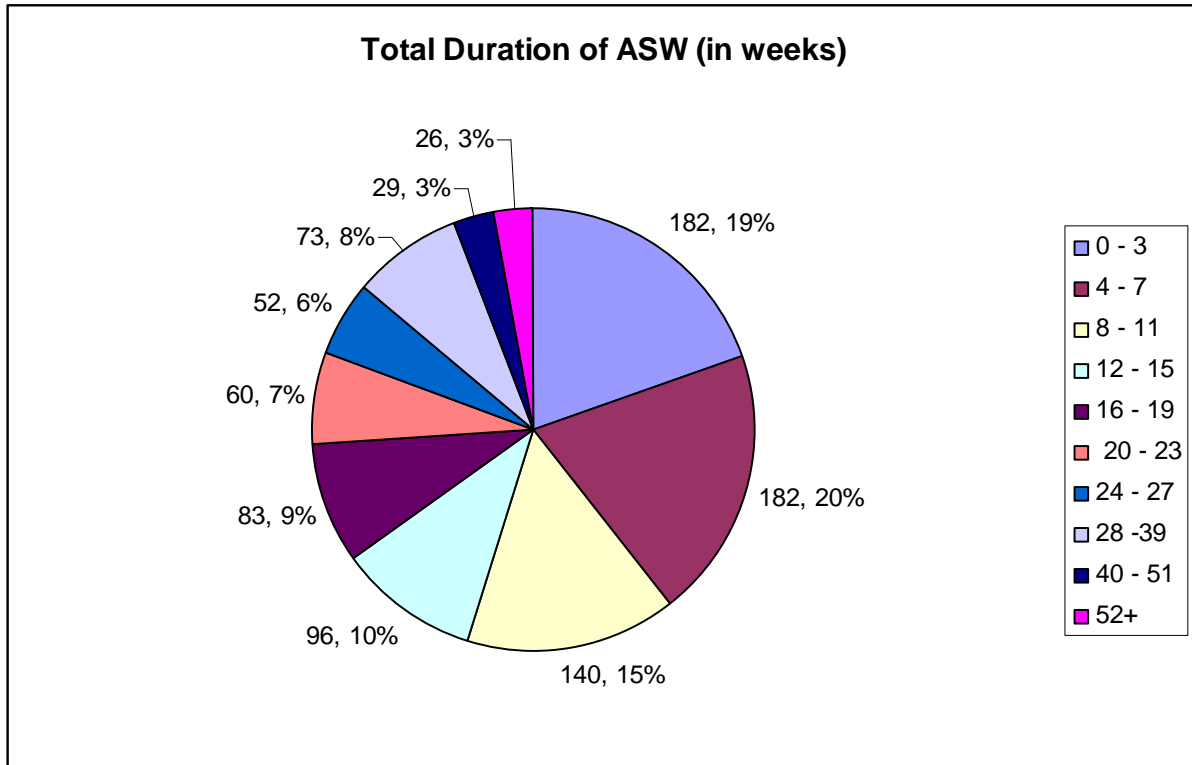
Registered ASW by age

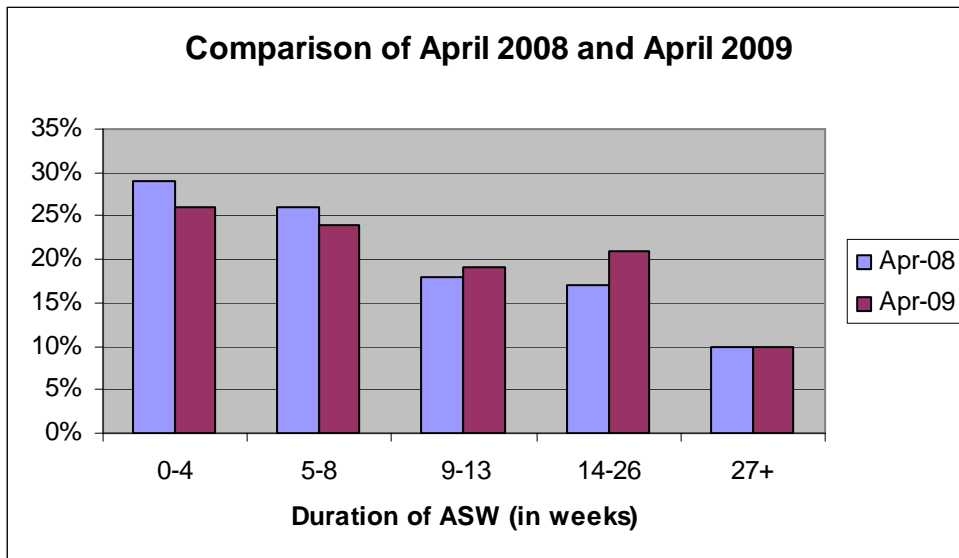
The charts below show the number of people registered as ASW by age as at 30 April 2009. 36% of those registered are aged 24 or below.



Duration as ASW

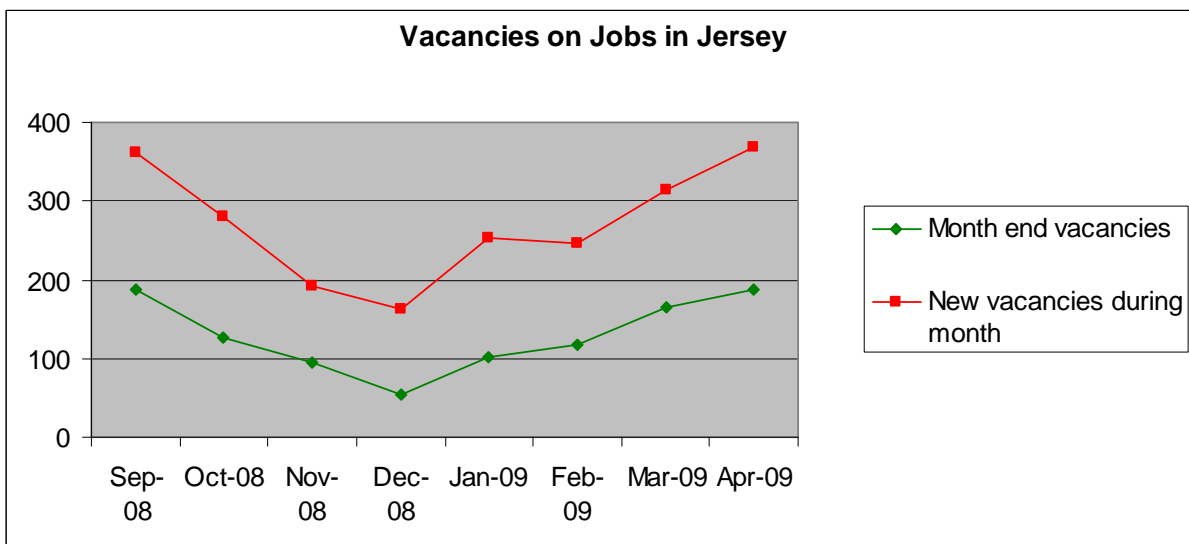
The majority of people who register as ASW with the Social Security Department remain registered for less than 12 weeks. The chart below provides information on the periods of time people have been registered with the Department as at 30 April 2009.





Comparing the percentage of ASW remaining registered between April 2008 and April 2009 indicates that individuals are remaining as ASW for slightly longer than at this time last year.

At the end of April 2009, 187 vacancies were advertised on the Jobs in Jersey website (<http://www.gov.je/jobs/>). This compares with 281 vacancies at the end of April 2008. During the month 369 new vacancies were posted, compared to 547 in April 2008. Although vacancies are running at a much lower level than this time last year, numbers have picked up since the beginning of 2009.



General Note

It should be remembered that there is no statutory requirement for all unemployed residents of Jersey to register as actively seeking work with the Social Security Department. As such the data above is a useful indicator of the level of unemployment in the Island but it does not attempt to measure the actual rate of unemployment. This is undertaken on an annual basis through the Jersey Annual Social Survey.