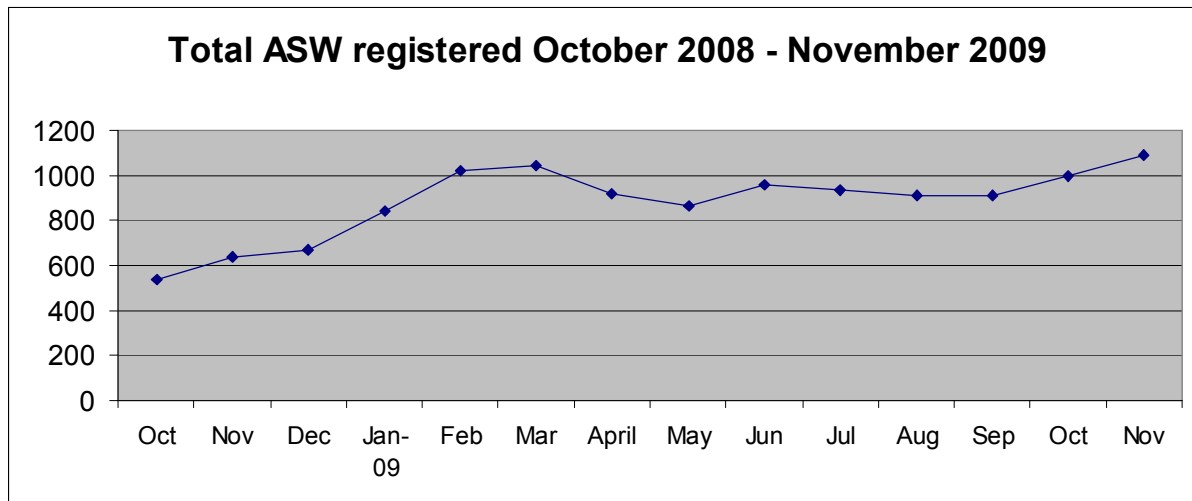


**Social Security Department**  
**Registered Unemployed Individuals Actively Seeking Work (ASW)**  
**30 November 2009**

1089 people were registered with the Department as unemployed and actively seeking work (ASW) on 30 November 2009. Of these 696 were men and 393 women.



The figure for November shows that the number of people actively seeking work has increased by 92 from 997 in October.

Of the 1089 people registered as ASW, 698 were receiving Income Support<sup>1</sup> at the end of November.

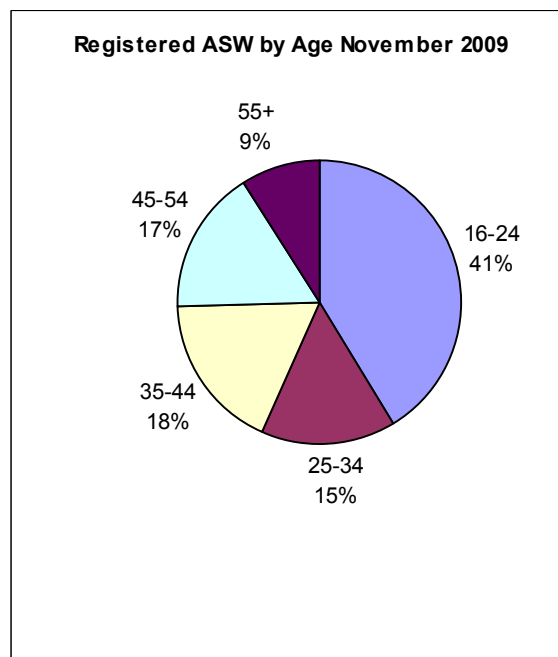
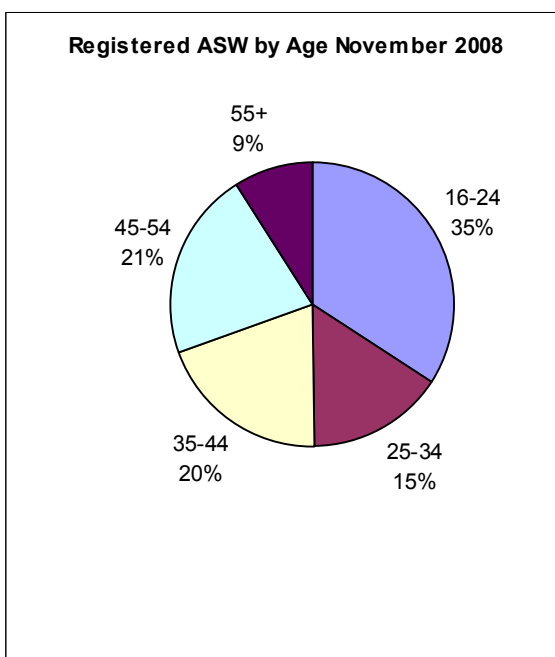
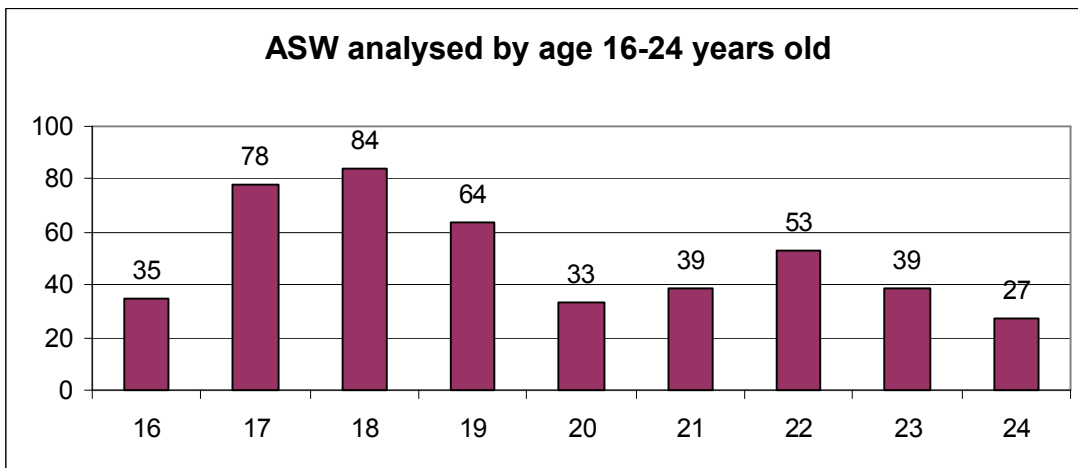
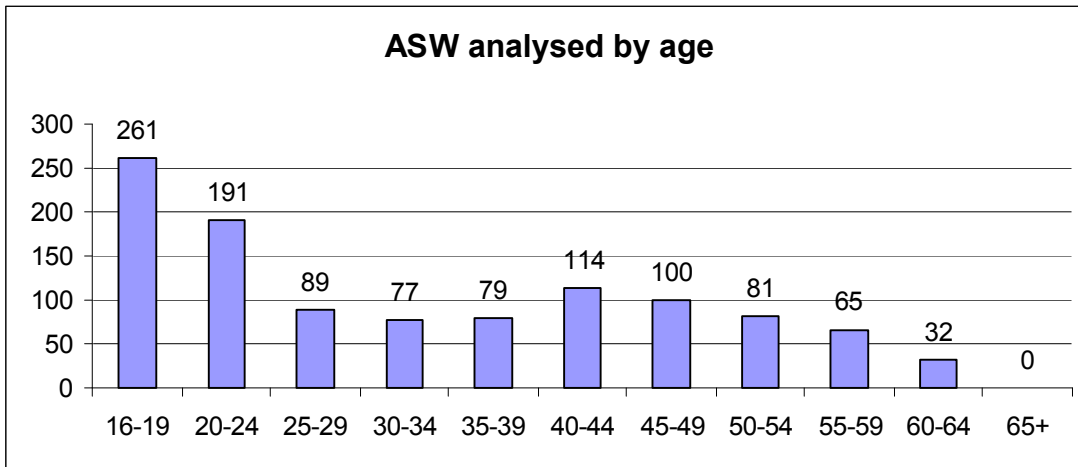
The use of the learning area facilities has increased with 783 sessions in November compared to 692 in October.

---

<sup>1</sup> The total number of adults receiving Income Support without work will be greater than this figure, however this is the number registered on 30 November as ASW.

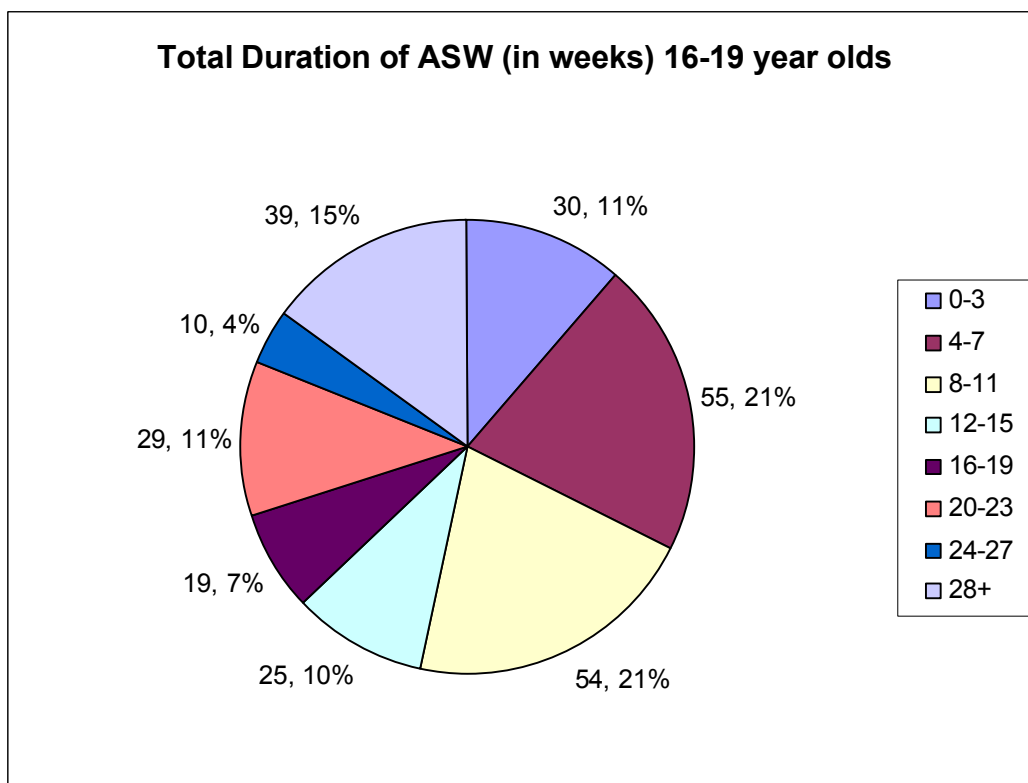
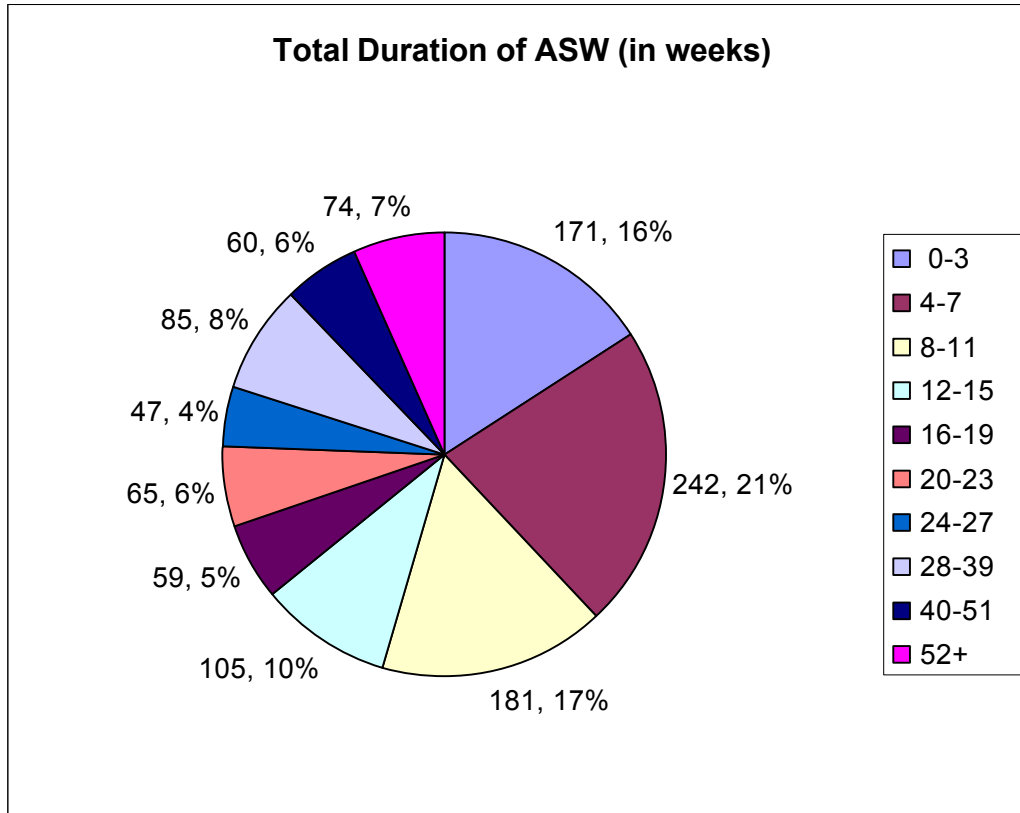
## Registered ASW by age

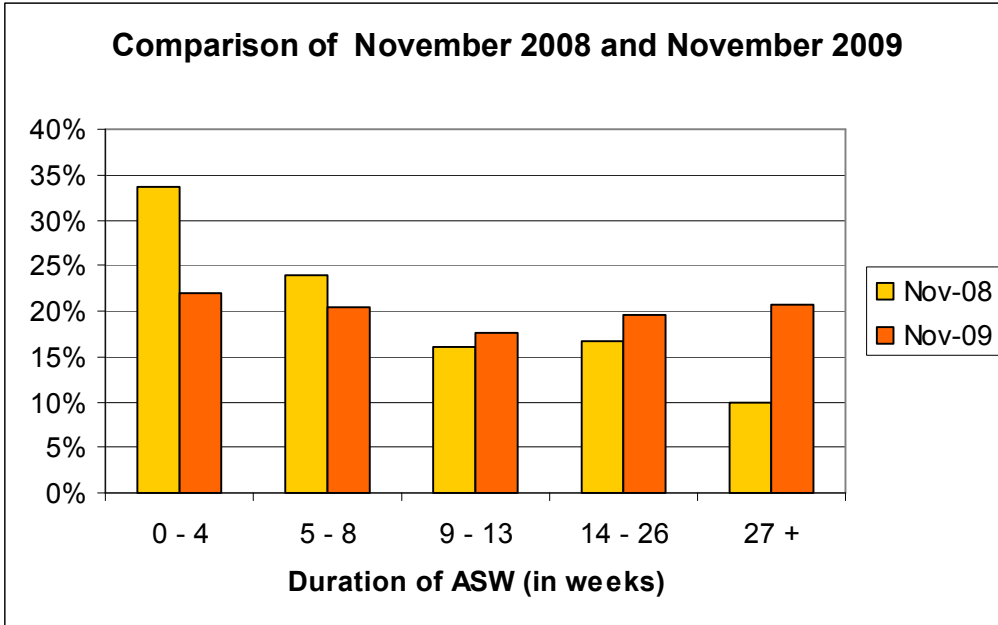
The charts below show the number of people registered as ASW by age as at 30 November 2009. 41.5% of those registered are aged 24 or below.



## Duration as ASW

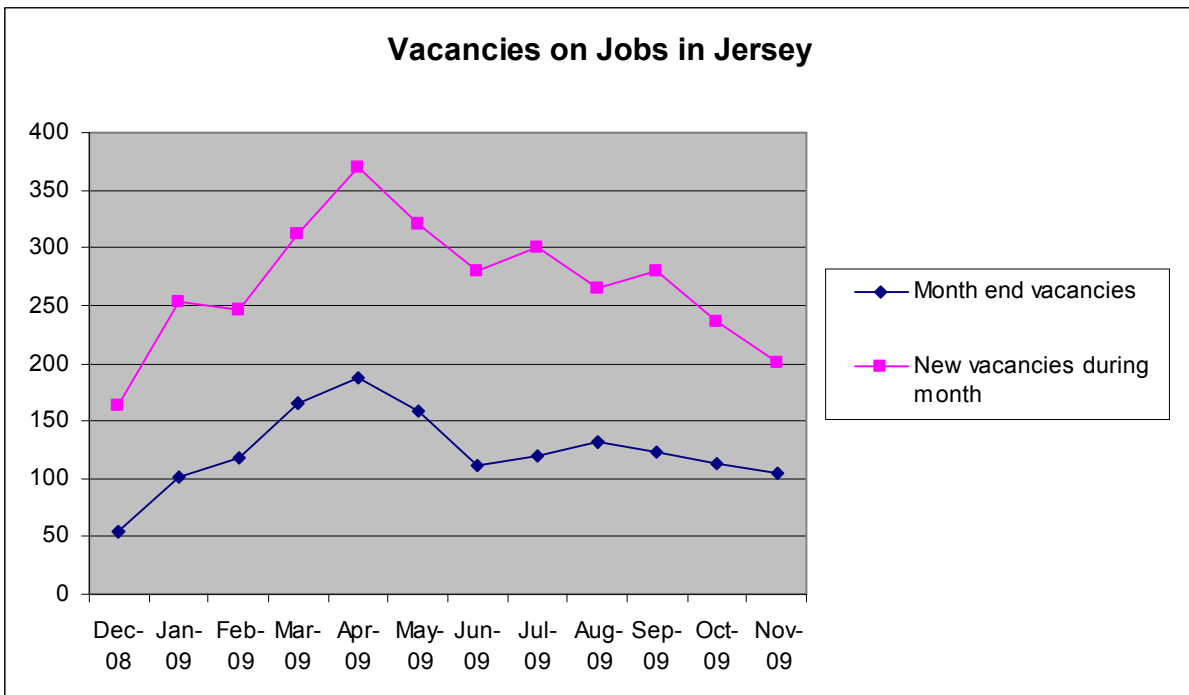
The majority of people who register as ASW with the Social Security Department remain registered for less than 12 weeks. The chart below provides information on the periods of time people have been registered with the Department as at 30 November 2009.





Comparing the percentage of ASW registered between November 2008 and November 2009 indicates that individuals are remaining as ASW for longer periods than at this time last year.

At the end of November 2009, 105 vacancies were advertised on the Jobs in Jersey website (<http://www.gov.je/jobs/>). This compares with 96 vacancies at the end of November 2008. During the month 201 new vacancies were posted, compared to 193 in November 2008. Vacancies are running at a very similar level to last year with numbers continuing to follow the normal seasonal trend.



**General Note**

It should be remembered that there is no statutory requirement for all unemployed residents of Jersey to register as actively seeking work with the Social Security Department. As such the data above is a useful indicator of the level of unemployment in the Island but it does not attempt to measure the actual rate of unemployment. This is undertaken on an annual basis through the Jersey Annual Social Survey.