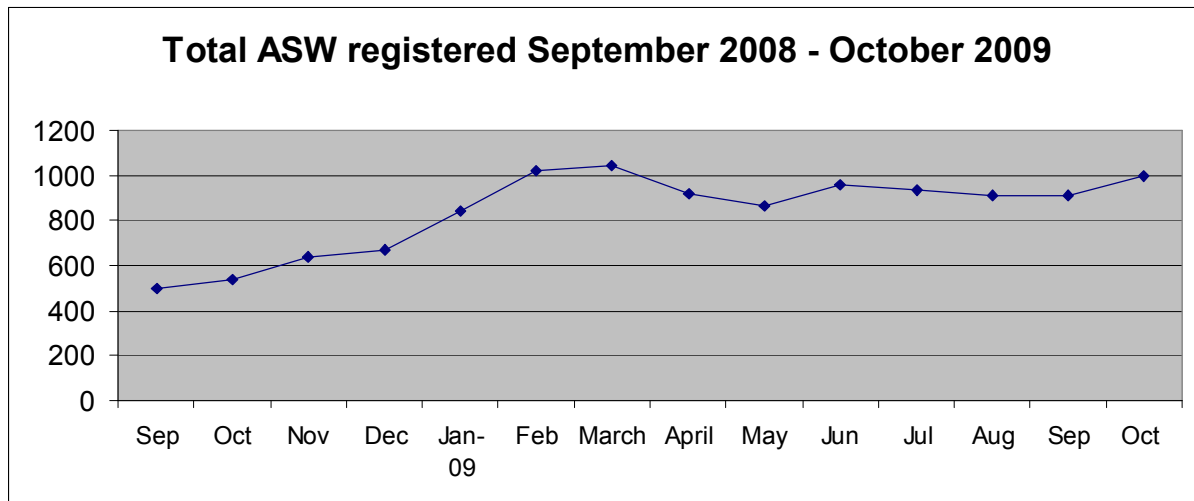


**Social Security Department**  
**Registered Unemployed Individuals Actively Seeking Work (ASW)**  
**31 October 2009**

997 people were registered with the Department as unemployed and actively seeking work (ASW) on 31 October 2009. Of these 648 were men and 349 women.



The figure for October shows that the number of people actively seeking work has increased by 87 from 910 in September.

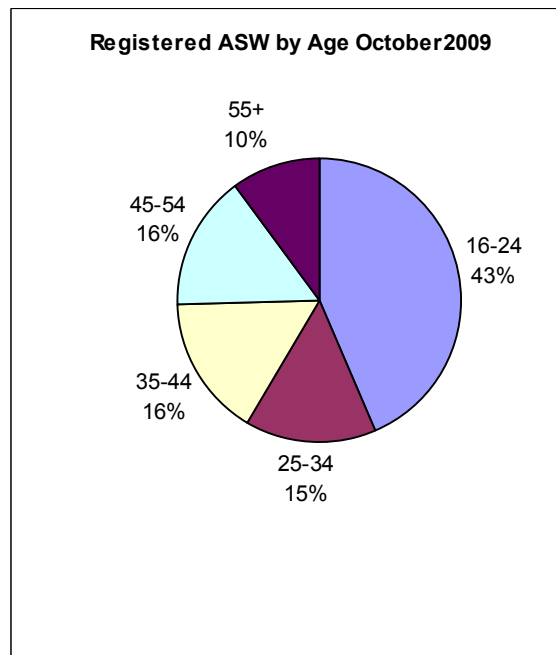
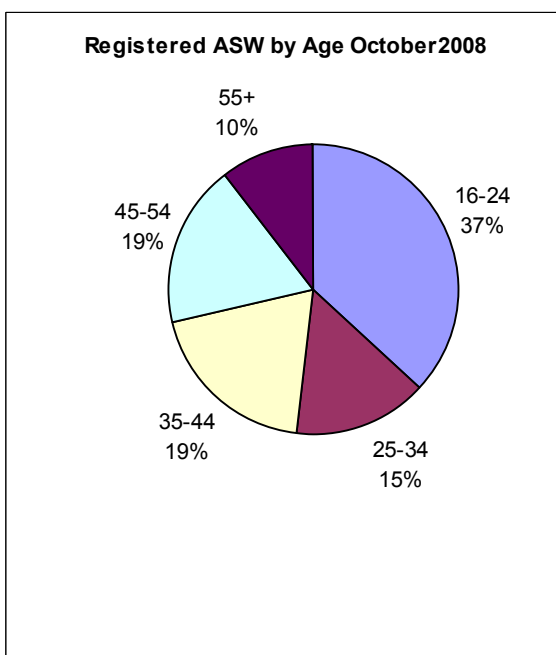
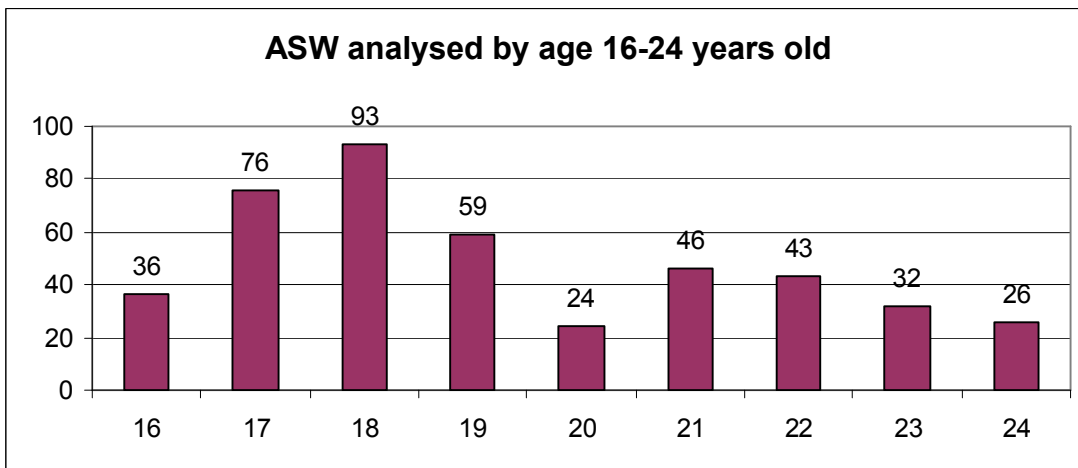
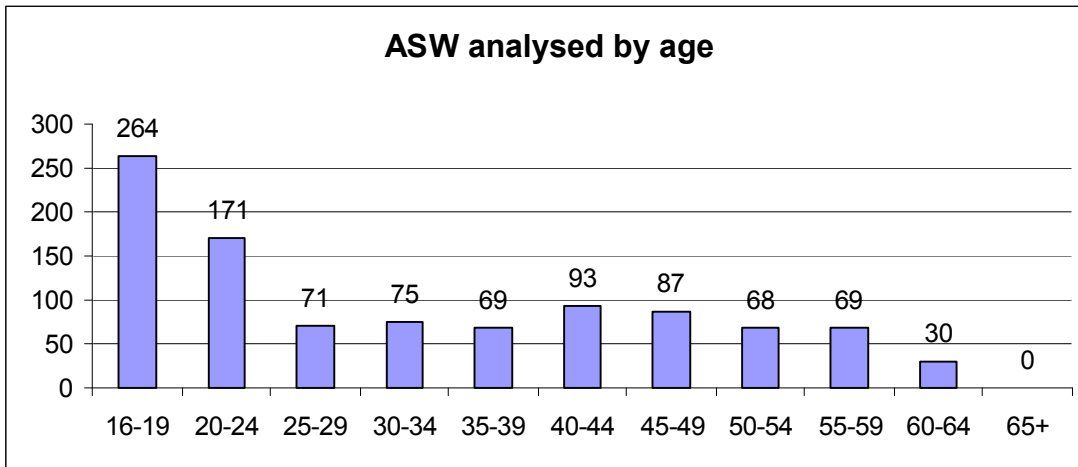
Of the 997 people registered as ASW, 636 were receiving Income Support<sup>1</sup> at the end of October.

---

<sup>1</sup> The total number of adults receiving Income Support without work will be greater than this figure, however this is the number registered on 31 October as ASW.

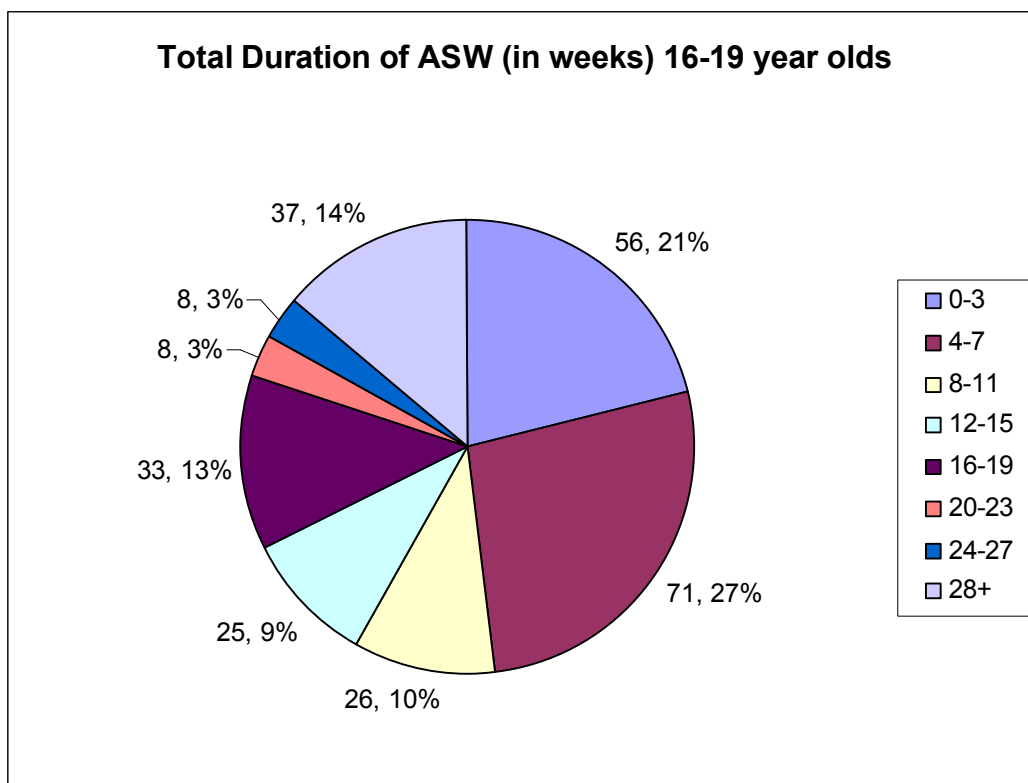
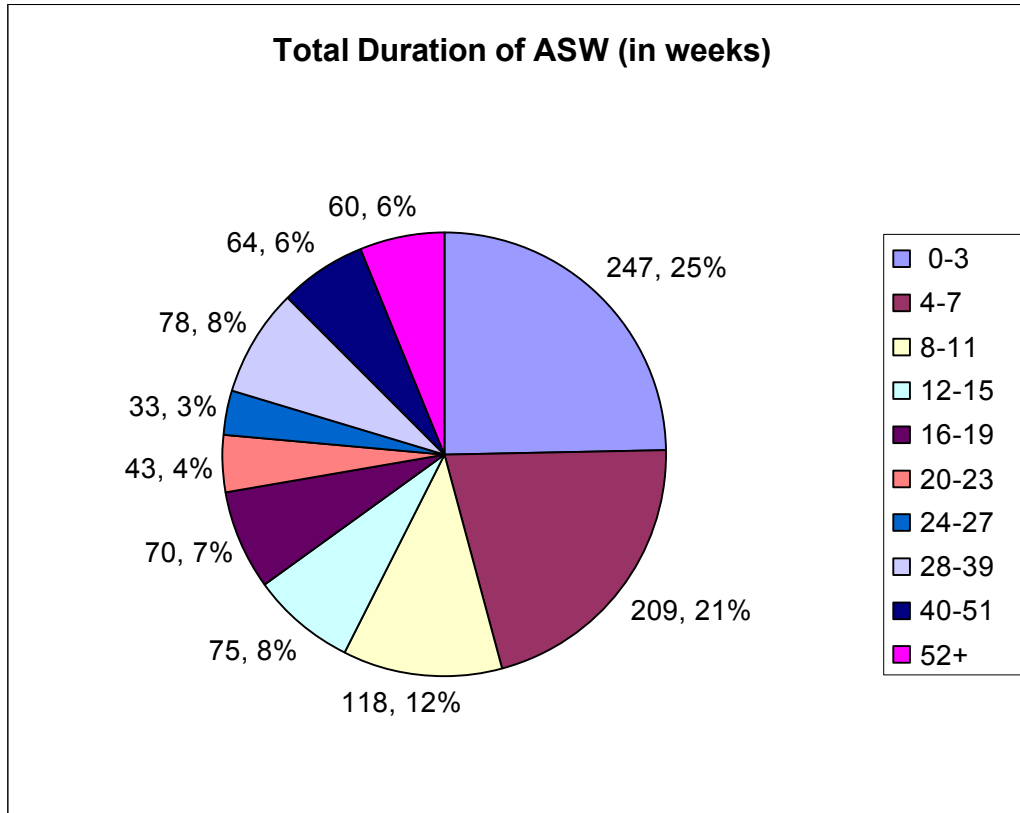
## Registered ASW by age

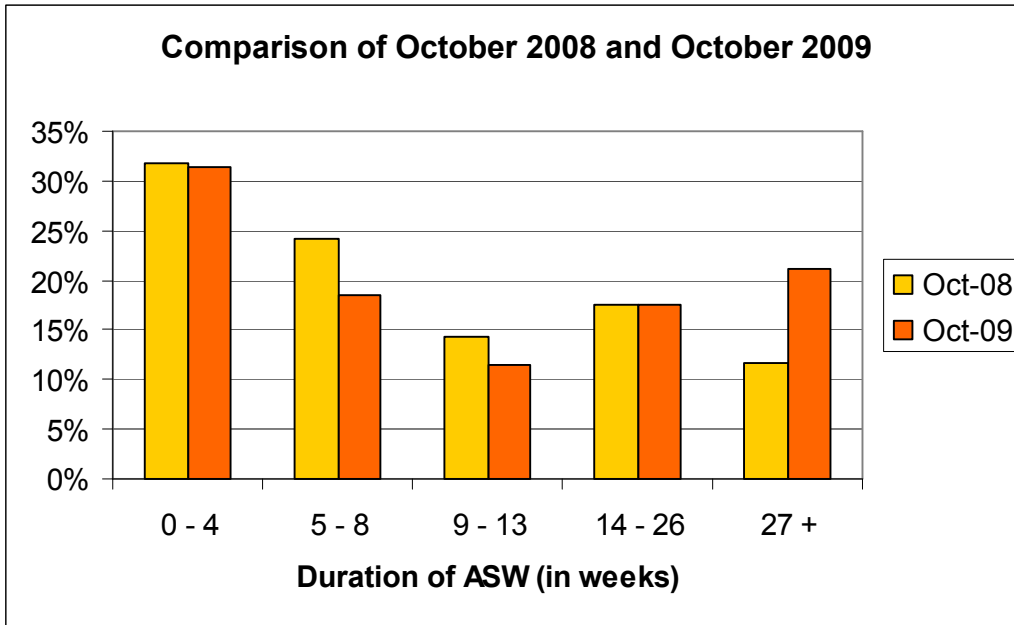
The charts below show the number of people registered as ASW by age as at 31 October 2009. 43% of those registered are aged 24 or below.



## Duration as ASW

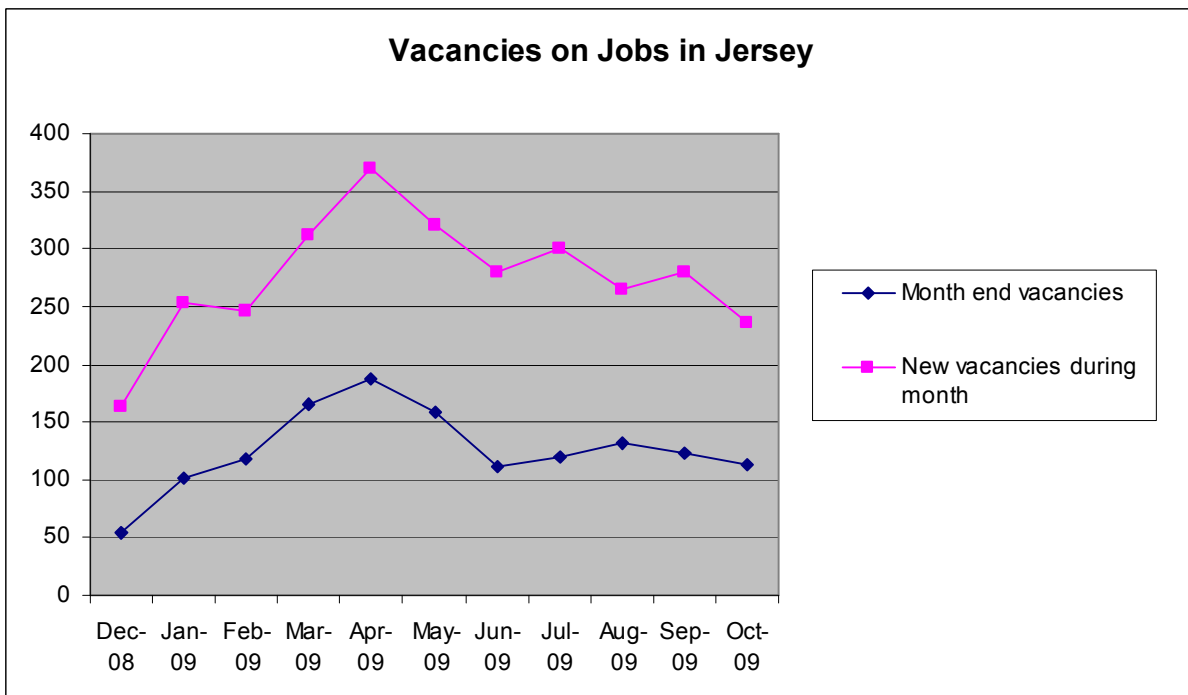
The majority of people who register as ASW with the Social Security Department remain registered for less than 12 weeks. The chart below provides information on the periods of time people have been registered with the Department as at 31 October 2009.





Comparing the percentage of ASW registered between October 2008 and October 2009 indicates that individuals are registered as ASW for longer periods than at this time last year.

At the end of October 2009, 113 vacancies were advertised on the Jobs in Jersey website (<http://www.gov.je/jobs/>). This compares with 126 vacancies at the end of October 2008. During the month 236 new vacancies were posted, compared to 281 in October 2008. Although vacancies are running at a lower level than this time last year, numbers continue to follow the normal seasonal trend.



### **Advance to work scheme (ATW)**

At the end of October there were 74 trainees on the Advance to work (ATW) scheme who were registered as actively seeking work. During October 40 new trainees joined the ATW programme and of those 40, 20 were newly registered as actively seeking work.

### **General Note**

It should be remembered that there is no statutory requirement for all unemployed residents of Jersey to register as actively seeking work with the Social Security Department. As such the data above is a useful indicator of the level of unemployment in the Island but it does not attempt to measure the actual rate of unemployment. This is undertaken on an annual basis through the Jersey Annual Social Survey.