

## Jersey Labour Market at December 2005

This report presents information on employment and vacancies in Jersey at the end of December 2005, bringing together the results of the Manpower Survey (private sector)<sup>1</sup> and the separate report on public sector manpower produced by the States Treasury<sup>2</sup>.

### Headlines

The principal features of the Jersey Labour Market at December 2005 were<sup>3</sup>:

- **total employment was 50,230, about 640 higher (1.3%) than a year previously**, and representing the highest December figure for three years.
- of the total employment: **43,850 (87%) were in the private sector** (including the States Trading Committees) and **6,380 (13%) were in the public sector**;
- the **overall increase** in total employment in the twelve months to December 2005 was made up of an **increase of 730 in the private sector** and a **decrease of 90 in the public sector**;
- the **increase in private sector employment of 1.7%** in the twelve months to December 2005 is the largest annual increase since December 1998;
- the **decrease in public sector employment** is largely a result of increased vacancies which were up by 70 on December 2004<sup>2</sup>;
- in the private sector, **Construction, Finance and Wholesale & retail** saw the largest increases in employment on an annual basis, the latter driven by increases in the area of fulfilment; the **Manufacturing** sector saw the largest fall in employment;
- in the private sector, the number of **locally qualified** staff was some **700 higher** than in December 2004, the number of **j-category employees** was **up by 100** (predominantly due to increases in the Finance sector), whilst the number of **non-locally qualified** staff **decreased by 60** over the same period;
- 1,960 people were engaged in **one-person businesses**, up by 180 on December 2004;
- **registered unemployment** stood at 370 in December 2005, some 110 less than twelve months previously; the **ILO unemployment rate was 2.2%** in the third quarter of 2005.

---

<sup>1</sup> The Manpower Survey is analysed by the States of Jersey Statistics Unit on behalf of the Economic Development Department (Note 1).

<sup>2</sup> For more information see Report on Public Sector Manpower – December 2005: States of Jersey Treasury.

<sup>3</sup> Throughout this report employment, registered unemployment and vacancy numbers are rounded independently to the nearest 10.

## **Overview: Total Employment**

The total number in employment in Jersey in December 2005, either full-time or part-time, was 50,230 which is 640 (1.3%) more than in December 2004.

The private sector, including States Trading Committees (see Note 2) and single-person enterprises, employed 43,850 people; this total is 730 (1.7%) *more* than a year earlier. In the public sector the headcount was reported at 6,380, which is 90 (1.4%) *less* than a year earlier; public sector employment equated to 5,480 full-time equivalent (FTE) employees.

**Table 1: Employment (headcount) in the private and public sectors.**

		<u>Private</u>	<u>Public</u> <sup>4</sup>	<u>Total</u>
<b>1996</b>	Jun	45,940	5,810	<b>51,760</b>
	Dec	41,170	5,770	<b>46,950</b>
<b>1997</b>	Jun	47,010	5,930	<b>52,930</b>
	Dec	43,800	5,800	<b>49,600</b>
<b>1998</b>	Jun	49,480	5,930	<b>55,410</b>
	Dec	44,640	5,930	<b>50,570</b>
<b>1999</b>	Jun	48,770	6,130	<b>54,900</b>
	Dec	43,610	5,970	<b>49,580</b>
<b>2000</b>	Jun	47,760	6,070	<b>53,830</b>
	Dec	43,810	5,950	<b>49,770</b>
<b>2001</b>	Jun	47,550	6,200	<b>53,750</b>
	Dec	43,970	6,130	<b>50,100</b>
<b>2002</b>	Jun	47,400	6,260	<b>53,660</b>
	Dec	43,980	6,310	<b>50,290</b>
<b>2003</b>	Jun	46,800	6,470	<b>53,270</b>
	Dec	43,220	6,450	<b>49,670</b>
<b>2004</b>	Jun	45,810	6,550	<b>52,360</b>
	Dec	43,120	6,470	<b>49,590</b>
<b>2005</b>	Jun	46,430	6,510	<b>52,940</b>
	Dec	43,850	6,380	<b>50,230</b>

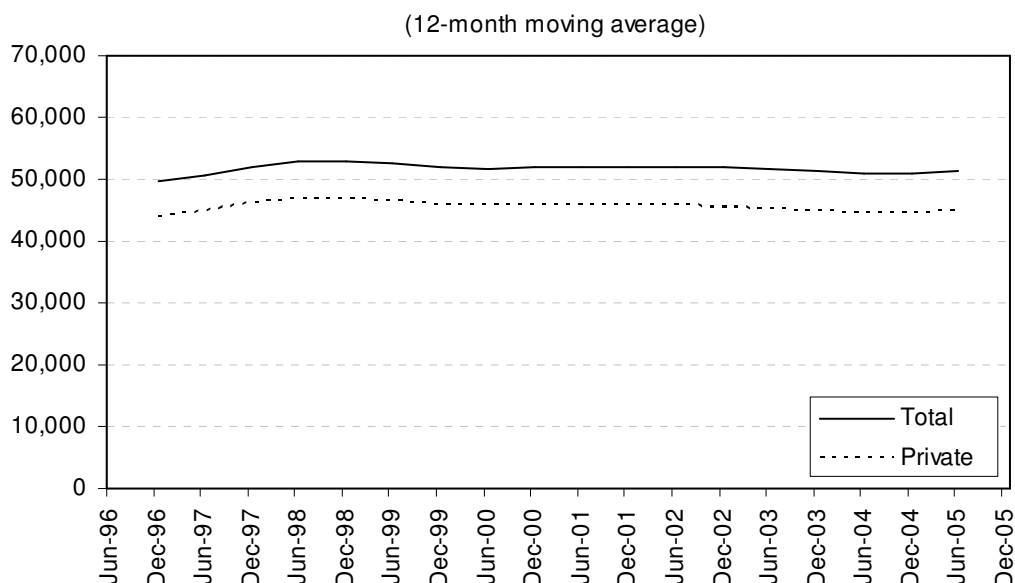
Numbers are rounded independently to the nearest 10.

The total number of people in employment rose rapidly from 51,760 at June 1996 to a peak of 55,410 at June 1998 (Table 1). Total employment in December 2005 was the highest December figure for three years.

<sup>4</sup> The public sector headcount figures for December 2004 and June 2005 have been revised from those previously published (see Note 7).

Figure 1 shows the trend in total and private sector employment since 1996 (see Note 3). The chart indicates that total and private sector employment in Jersey was substantially constant between 1999 and December 2002, decreased during 2003 and 2004, and has increased throughout 2005.

**Figure 1 - Total and Private sector Headcount**

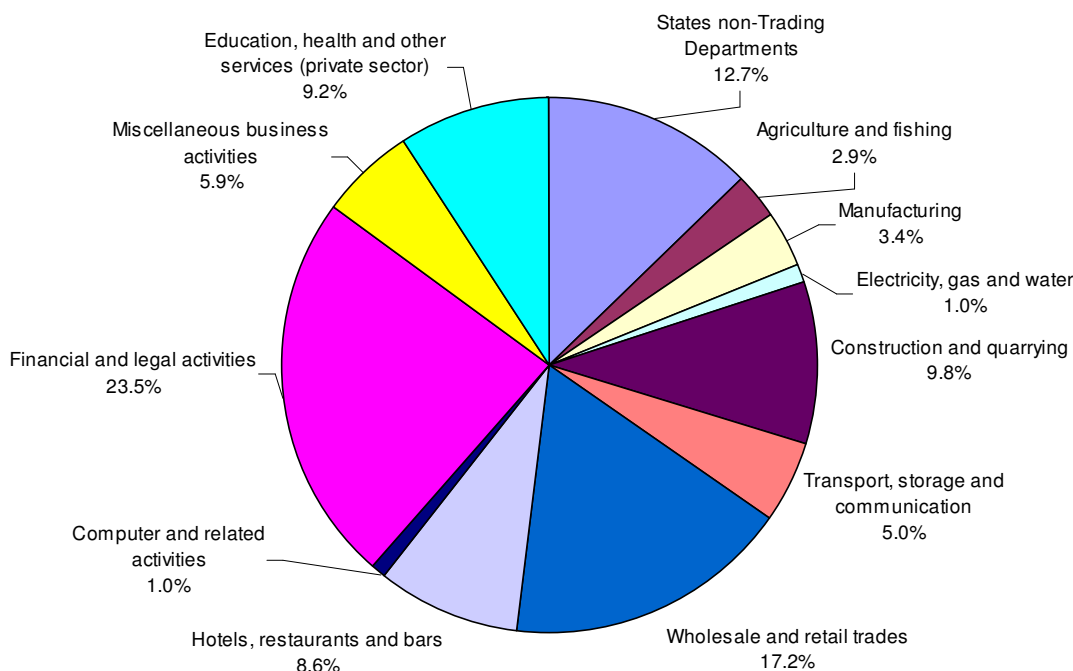


### Sectoral Breakdown

Figure 2 shows the sectoral breakdown of employment at December 2005:

- almost a quarter (23.5%) of the total were engaged in the Finance sector (11,810)
- a sixth (17.2%) were in Wholesale and retail trades (8,640), an increased proportion compared to 2002 and 2003 when the sector accounted for about 16% of the total;
- the public sector (excluding States Trading Committees) accounted for about one in eight (12.7%) of Jersey's labour force.

**Figure 2 - Jersey employment  
December 2005 headcount**



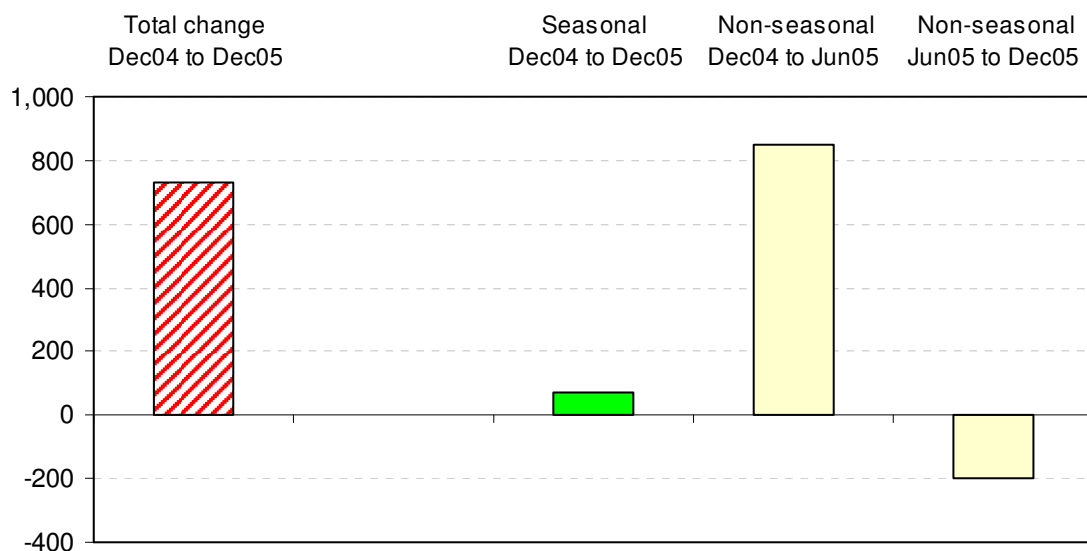
## **Overview: Private sector**

The number of people employed in Jersey businesses in December 2005 was 43,850, which is 730 more than a year earlier, made up of an increase of 570 full-time and 150 part-time employees. The overall annual rise of 1.7% is the largest increase since December 1998 and follows on from the previous increase of some 620 (1.4%) seen during the twelve months to June 2005<sup>5</sup>. Total private sector employment in calendar 2005 was thus about 1½% greater than that of 2004.

The latest net increase of 730 on an annual basis consisted of (see Figure 3):

- an increase of 850 jobs in the predominantly non-seasonal sectors in the period December 2004 to June 2005;
- a decrease of 200 in the predominantly non-seasonal sectors between June and December 2005;
- a small increase of 70 in seasonal industries compared to the previous December, principally due to increased employment in catering activities within the Hotels, restaurants and bars sector

**Figure 3 - Net changes Dec 04 to Dec 05**



The dominant feature of Figure 3 is the increase in employment (of 850) in the non-seasonal sectors during the first six months of 2005.

The decline (of 200) for the non-seasonal sectors between June and December 2005 is indicative of residual seasonal influences within these sectors, e.g. car hire in Miscellaneous business activities and sporting and entertainment activities in Education, health and other services. Such seasonal activities will also have contributed slightly to the increase observed in the predominantly non-seasonal sectors during the first six months of 2005.

In the twelve months to December 2005, Construction recorded the largest annual increase of any sector of almost 6% (260 employees) resulting in total employment in December 2005 (4,910) being similar to the level seen six months earlier. The cyclical nature of employment in Construction is apparent in Appendix 1, with previous periods of growth occurring in 1997/8 and 2001/2.

<sup>5</sup> Some of the annual increase in employment for the period June 04 to June 05 is also contained within the latest annual increase between December 04 and December 05

Overall employment in Wholesale and retail grew by 130 in the twelve months to December 2005, with the retail sub-sector showing a net increase of 100. This net growth in retail was predominantly due to increased employment in the area of fulfilment during the second half of 2005. A total of 860 employees were employed in fulfilment activities in December 2005, representing an increase of 210 between June and December 2005 and of 230 on an annual basis.

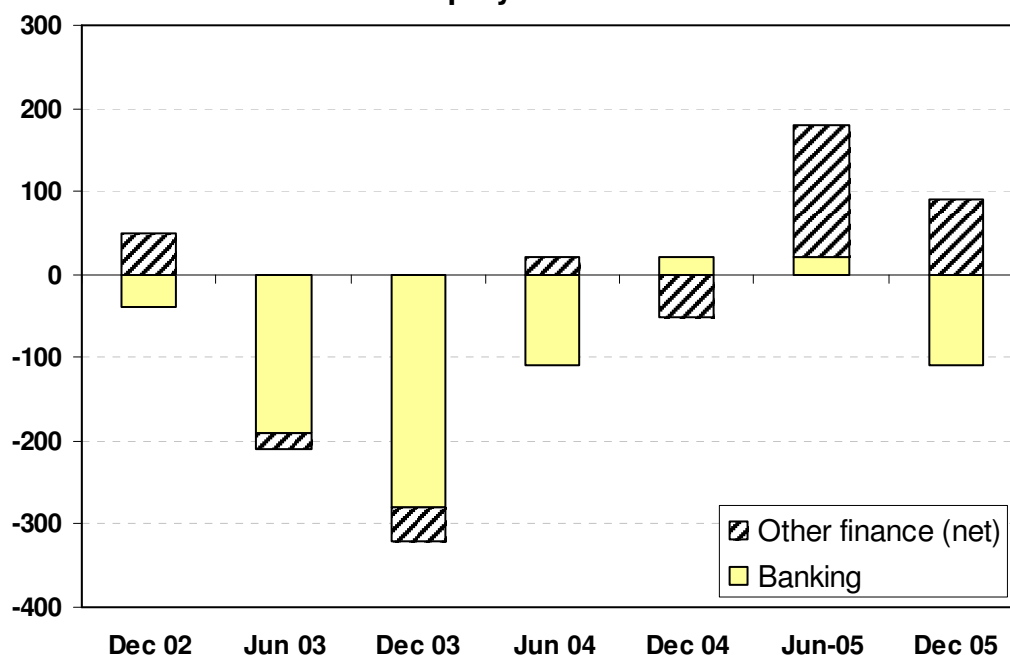
Manufacturing recorded the largest decrease in total employment over the twelve months to December 2005, reporting a net reduction of 60, predominantly due to rationalisation within a small number of larger undertakings.

During the last six months of 2005, the Financial services sector showed a small decrease of 20 employees (Table 2), resulting from a net fall of 110 in banking, a fall of 40 in Trust & Company Administration and an increase of 100 in legal activity. Whilst employment in banking fell, the number of vacancies in the sub-sector increased by 40. The overall level of employment in the Finance sector remains higher than 2004 levels.

**Table 2: Employment in the sub-sectors of Financial services: Jun-02 to Dec-05.**

	Jun-02	Dec-02	Jun-03	Dec-03	Jun-04	Dec-04	Jun-05	Dec-05
Banking	6,160	6,120	5,930	5,650	5,540	5,560	5,580	5,470
Trust & Co. Admin.	2,340	2,440	2,440	2,410	2,420	2,350	2,390	2,350
Legal	2,060	2,010	2,010	2,030	2,050	2,050	2,150	2,250
Accountancy	790	810	790	730	720	770	780	800
Other	950	930	930	960	960	930	940	940
<b>Total</b>	<b>12,300</b>	<b>12,300</b>	<b>12,100</b>	<b>11,790</b>	<b>11,690</b>	<b>11,660</b>	<b>11,830</b>	<b>11,810</b>

**Figure 4 - Six-month changes in Finance sector employment 2002 - 2005**

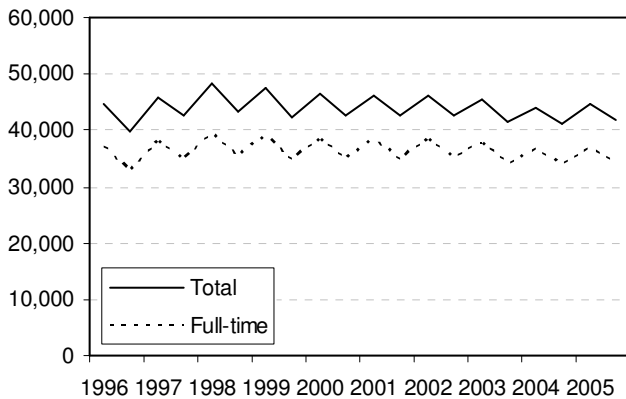


Employment excluding one-person businesses<sup>6</sup>

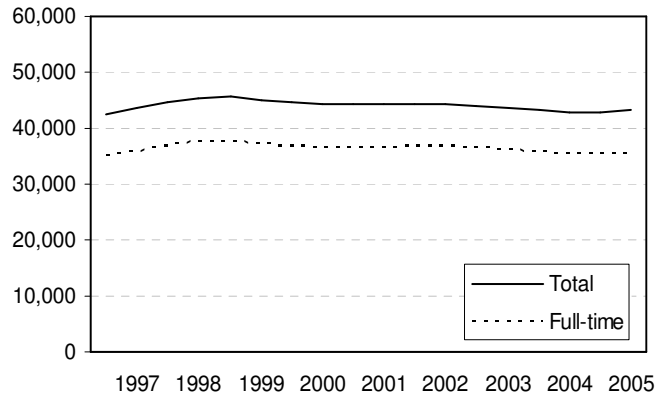
The number in *full-time* employment increased by 490 over the twelve months to December 2005, to stand at 34,350, an increase of 1.4%%. The number of staff in *part-time* employment increased by 0.7% (50), to 7,530.

On a shorter time-frame, between June 2005 and December 2005 full-time employment decreased by 2,380 and part-time employment decreased by 320. These shorter-term changes are heavily influenced by seasonal factors, as can be seen from Figure 5a. The underlying trend, excluding seasonal and other short-term variations, is shown by Figure 5b (see Note 3). The twelve-month percentage changes are shown in Figure 6.

**Figure 5a - Employment in Jersey Undertakings**



**Figure 5b - Underlying trend in employment**



**Figure 6 - Twelve month percentage changes in private sector employment**



Employment in one-person businesses

In December 2005 there were 1,960 reported single-person undertakings, about 180 more than a year earlier.

Increases in one-person businesses over the twelve months to December 2005 occurred notably in the Retail sub-sector of Wholesale and retail trades, in the Building installation and completion sub-sectors of Construction, and in Other services activities within the Education, health and other services sector.

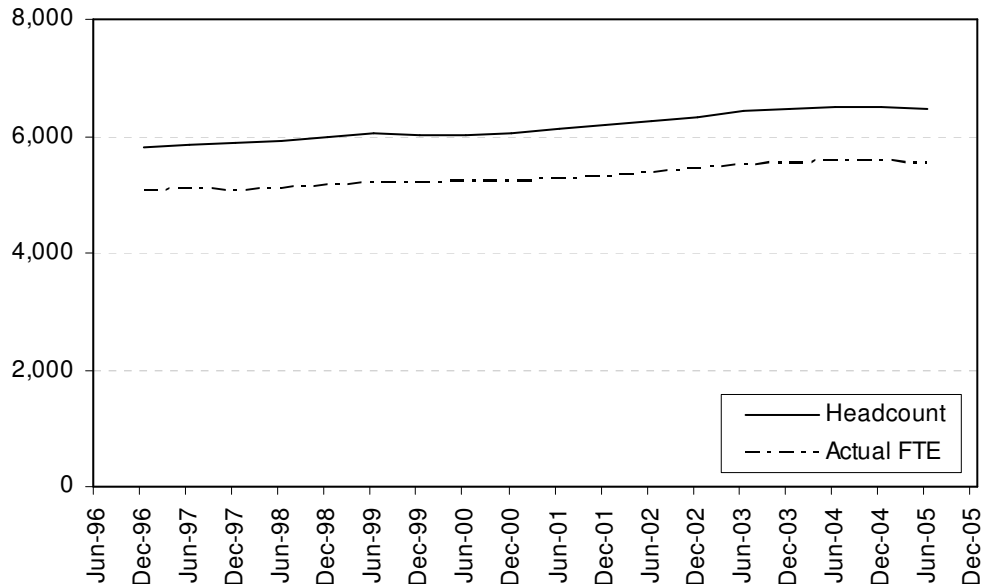
Single-person undertakings were not being consistently recorded prior to 2000, so detailed figures excluding single-person undertakings are presented in Appendix 1; those including single-person undertakings are shown in Appendix 2 (see Note 6).

<sup>6</sup> These data are shown in order to obtain a longer term view of employment in Jersey since one-person undertakings were not consistently reported before 2000.

## **Overview: Public sector**

Total headcount in the public sector stood at 6,380 in December 2005, a reduction of 90 compared to the same period in 2004. This reduction was predominantly due to an increase in vacancies of 70. As Table 1 and Figure 7 show, public sector headcount increased by about 10% between June 1996 and December 2005.

**Figure 7 - Public Sector employment**



For the public sector it is possible to calculate the number of Actual “Full-Time Equivalent” (FTE) employees. This measure of employment includes filled permanent, contract, seasonal and training positions weighted according to the proportion of a full week actually worked. Actual FTE employment constitutes a more representative indicator of growth in public sector than that of headcount as approval for changes in employment is granted on an FTE basis.

In December 2005, Civil Servants accounted for almost a third (32%, 1,760 FTE) of total public sector actual FTE, Manual Workers for about a sixth (18%, 960 FTE), and Other Employees (e.g. teachers, nurses, doctors, police, firemen, Crown Appointees) for the remaining half (50%, 2,760 FTE).

In terms of departments, in December 2005 Education, Sport & Culture accounted for about a quarter of total actual FTE (27%, 1,480 FTE), Health & Social Services for almost two-fifths (38%, 2,070 FTE) and all other departments for over a third (35%, 1,930 FTE).

## **Residential qualifications**

Overall, about 85% of people employed in Jersey in December 2005 were locally qualified (as defined by the Regulation of Undertakings and Development Law, see Note 4), a further 2% were j category and 13% (less than one in seven workers) were not locally qualified.

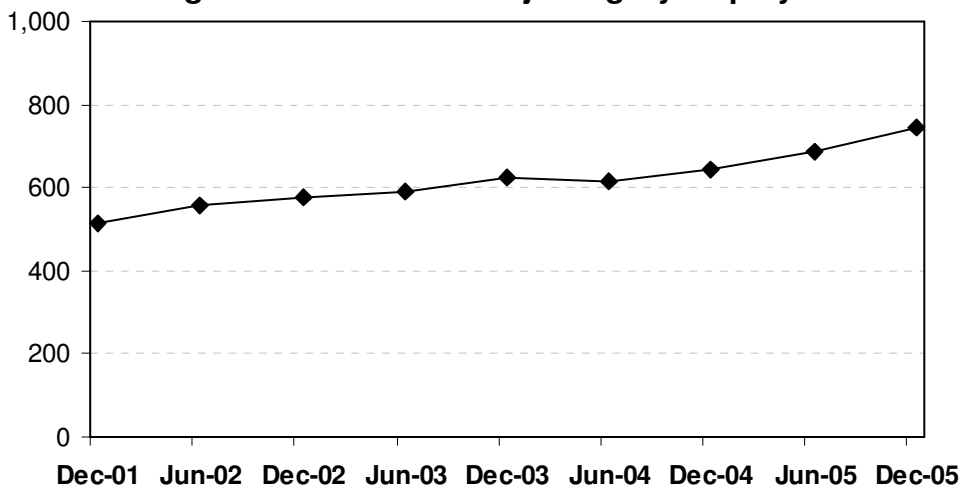
The States of Jersey Treasury estimates that 99.8% of public sector staff were locally qualified (including j category) as at December 2005. On the basis of 2001 Census information, it is estimated that 7% of public sector employees were j category.

The residential status of staff in the private sector was recorded for the first time by the December 2001 Manpower Survey. Each undertaking reported the numbers of locally qualified and non-locally qualified employees; full-time employees with j-category housing qualifications were recorded separately from other locally qualified staff.

Of the 43,850 total headcount reported in the private sector in December 2005, more than four-fifths (83.5%) were locally qualified and a further 1.7% (740 staff) were qualified under j category housing regulations; the remaining 14.8%, representing about one in seven of all private sector staff, were not locally qualified.

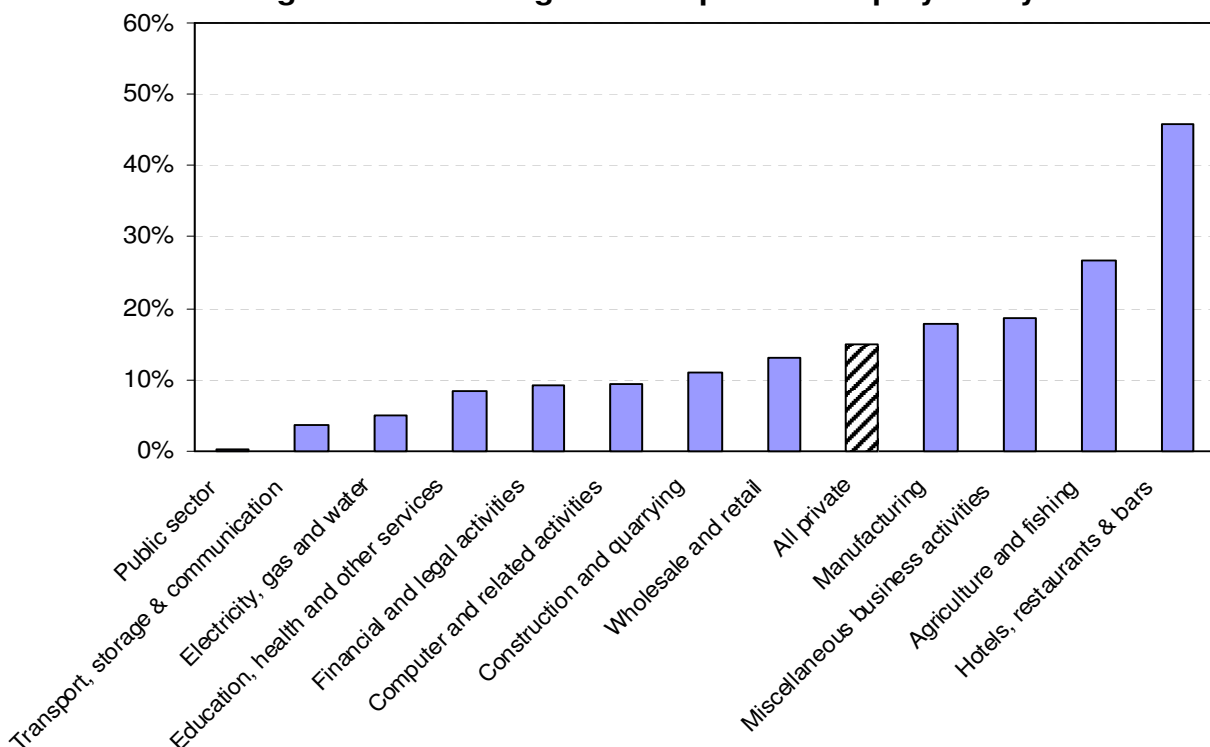
The number of locally qualified staff in the private sector in December 2005 was 700 more than in December 2004, whilst the number of private sector staff who were not locally qualified was 60 lower than a year previously. The number of j category employees in the private sector increased by 100 during the last twelve months to December 2005 (Figure 8), more than two-thirds of the increase resulting from increased numbers of j category staff in Financial services, particularly in the legal sub-sector.

**Figure 8 - Private sector j-category employees**



For the private sector in December 2005, the highest proportions of non-qualified employees were in Hotel, restaurants and bars (46%) and Agriculture and fishing (27%); whilst Transport, storage and communication (4%) and Electricity, gas and water (5%) had the lowest (Figure 9). About 9% of employees in the Finance sector and 10% in the fulfilment sub-sector of Wholesale and retail trades were non-locally qualified.

**Figure 9 - Percentage of non-qualified employees by sector**





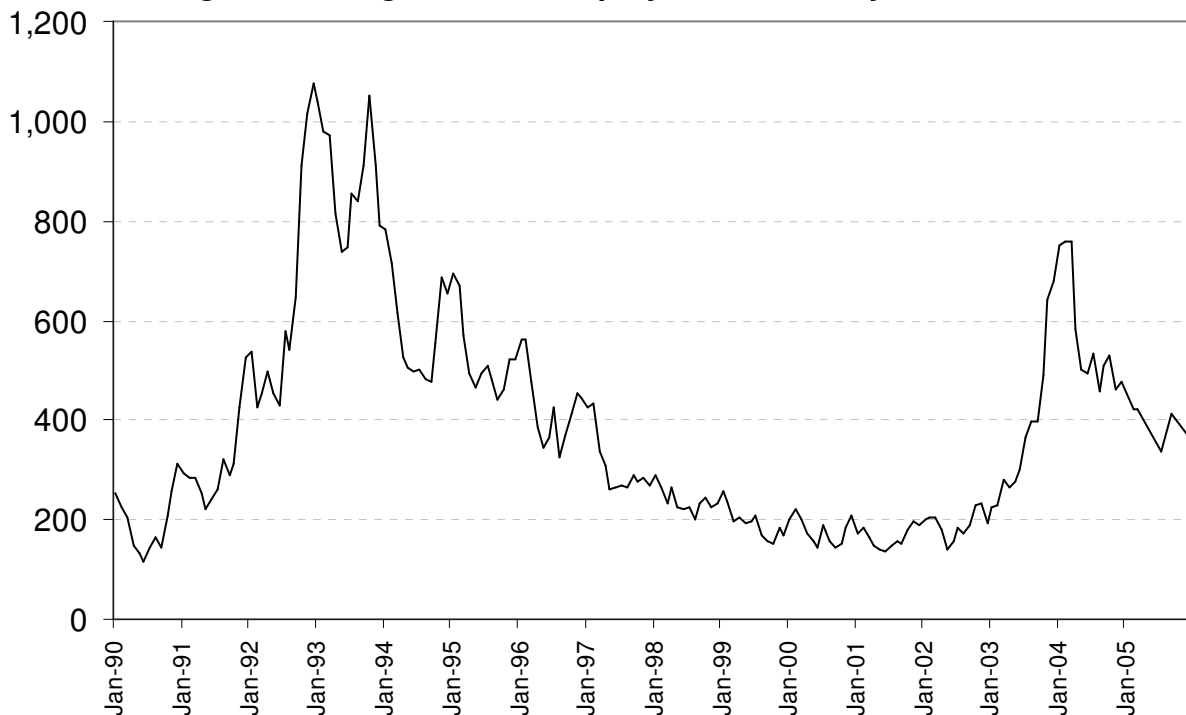
## Unemployment

The number of people registered as unemployed in Jersey stood at 370 in December 2005, a fall of 110 on December 2004.

It must be re-iterated that due to the absence of unemployment benefit in Jersey the number of people registered as unemployed should be regarded as an indicator rather than a measure of the actual level of unemployment, and can be influenced by factors such as greater awareness of the other benefits of registering as unemployed.

The number of people registered with Employment and Social Services as unemployed in Jersey is presented in Figure 10. This chart shows that registered unemployment in Jersey increased during the economic slowdown of the early 1990s before declining over the subsequent years to 1999; registered unemployment was then fairly constant for three years before rising in early 2004. The trend has been downward throughout 2005.

**Figure 10 - Registered unemployment in Jersey 1990-2005**



### International comparisons

In the UK, for the fourth quarter of 2005 there were almost 29 million people employed and 0.9 million people claiming Jobseeker's Allowance (the Claimant Count). In Jersey there were 370 persons registered as unemployed in December 2005. People *registered* as unemployed were therefore less than 1% of total employment in Jersey in December 2005, compared to about 3% in the UK<sup>7</sup>.

However, such a comparison based on the numbers of *registered* unemployed is likely to be affected by the absence of unemployment benefit in Jersey, reducing the incentive to register as unemployed. A better indicator is the ILO unemployment rate (see Note 5): for the UK this stood at 4.7% and 5.1% in the third and fourth quarters of 2005, respectively. For Jersey the ILO unemployment rate (as measured by the 2005 Jersey Annual Social Survey<sup>8</sup>) was 2.2% in the third quarter of 2005.

<sup>7</sup> Figures for the UK are from: Labour Market Trends, Vol 114 No 3.

<sup>8</sup> Jersey Annual Social Survey, 2005; States of Jersey Statistics Unit, March 2006.

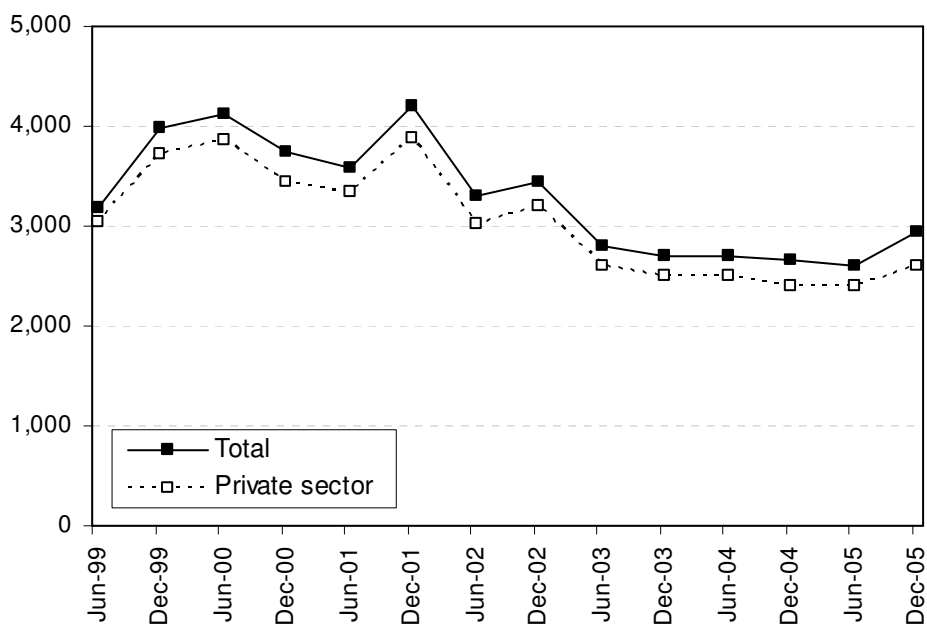
## Vacancies

The total number of vacancies in December 2005 (2,930) was the highest reported since June 2003 and the first increase since December 2002. Vacancies for full-time positions constituted about 85% of all private sector vacancies in December 2005. Figure 11 shows the total number of vacancies (full- and part-time) and the number reported in the private sector over the past six years.

2,600 vacancies were reported by the private sector in December 2005, constituting about 6% of the total number employed in such undertakings.

In the public sector there were 340 vacancies reported, approximately 5% of the total number employed within this sector.

**Figure 11 - Vacancies**



Acknowledging that there may be some inconsistency in the reporting of vacancies by undertakings in the private sector, and also the possible effect of recent changes in wording on the Manpower Survey form itself, Figure 11 nevertheless indicates the overall level of vacancies since 2003 has been substantially below that of the prior period 1999-2002.

## Notes

1. The Manpower Survey is a census of the approximate 5,000 undertakings in Jersey, which employ a total of almost 44,000 staff (December 2005) including some 8,200 part-time staff (who may have more than one job). Prior to December 2001, the Survey was conducted quarterly; from June 2002 the survey has taken place at six-monthly intervals.
2. The “private sector” includes States Trading Committees, the Jersey Financial Services Commission, the Family Nursing and Home Care Service and the Jersey Competition Regulatory Authority. These bodies, which are subject to the Regulation of Undertakings and Development Law, accounted for a total of 1,450 staff at December 2005.
3. For the six-monthly data of Figures 1, 5b and 6, short-term variations (largely due to seasonal factors) were removed by calculating a weighted three-point moving average; entries for June 1996 and December 2005, therefore, do not appear in these plots.
4. The definition of “locally qualified” as applied under the *Regulation of Undertakings and Development (Jersey) Law, 1973 as amended* includes all persons in the following categories:
  - i) residentially qualified persons falling within any of the Housing Regulations, excluding  
Regulation (l) and Regulation (m);
  - ii) persons resident for the whole of the past consecutive 5 years;
  - iii) the spouses of (i) or (ii) above;
  - iv) the children under 18 years (or if students under 25 years) of those in (i), (ii) or (iii) above.

The analysis in this report further divides the locally qualified between j-category and the remainder.
5. The International Labour Organisation (ILO) definition of unemployment includes all adults (aged 16 and over) who are not working and looking for or waiting to take up a job.
6. The historic numbers presented in the appendices for sectoral employment show some minor differences from those presented in previous Manpower Survey reports; these arise from minor revisions to staffing levels reported by a small number of undertakings.
7. The public sector headcount figure for December 2004 has been restated by the Treasury Department from those previously reported to include an additional 75 posts in the Education, Sport and Culture Department. This addition relates to multiple part-time roles undertaken by individual staff which had previously been reported as only one headcount for each individual. In Table 1, the public sector headcount figure for June 2005 has been revised accordingly.
8. Further information about the Manpower Survey is available from the States of Jersey Statistics Unit, telephone 440403, and about the States of Jersey Manpower Report from the Treasury, telephone 440220. Enquiries about the Regulation of Undertakings and Development Law should be addressed to the Regulation of Undertakings and Development Office, telephone 884530 (448930 after 10 April 2006).

*Statistics Unit*

*5 April 2006*

## Appendix 1- Manpower Engaged by Sector

(in businesses in which two or more people are engaged)

	Jun-96	Dec-96	Jun-97	Dec-97	Jun-98	Dec-98	Jun-99	Dec-99	Jun-00	Dec-00	Jun-01	Dec-01	Jun-02	Dec-02	Jun-03	Dec-03	Jun-04	Dec-04	Jun-05	Dec-05
<b>Full-time staff</b>																				
Agriculture and Fishing	2,150	1,420	2,140	1,470	2,180	1,440	2,170	1,470	1,980	1,420	1,940	1,330	1,870	1,410	1,810	1,360	1,680	1,220	1,540	1,190
Manufacturing	2,070	2,000	2,030	1,970	1,960	1,940	1,960	1,910	1,970	1,880	1,780	1,750	1,830	1,740	1,700	1,570	1,560	1,390	1,400	1,350
Construction and Quarrying	3,960	3,840	4,100	4,350	4,610	4,290	4,280	4,100	4,090	3,990	4,320	4,320	4,410	4,270	4,160	3,910	4,050	4,020	4,340	4,280
Electricity, Gas and Water	590	600	580	620	600	620	600	580	610	600	590	580	560	540	530	500	490	490	480	480
Wholesale and Retail Trades	6,660	6,320	6,710	6,530	6,730	6,460	6,520	6,270	6,350	6,190	6,300	6,140	6,190	6,080	6,170	6,140	6,130	6,350	6,330	6,430
Hotels, Restaurants & Bars	6,740	3,880	6,790	4,110	6,790	4,130	6,510	3,800	6,120	3,720	5,720	3,500	5,530	3,560	5,410	3,560	5,210	3,370	5,080	3,400
Transport, Storage & Communication	2,330	2,180	2,380	2,340	2,500	2,370	2,570	2,370	2,500	2,300	2,470	2,290	2,490	2,260	2,410	2,210	2,370	2,210	2,370	2,170
Computer and related activities	170	190	200	210	230	210	230	250	280	310	300	300	320	300	320	320	310	320	330	340
Financial and Legal Activities	8,510	8,740	9,060	9,550	9,950	10,180	10,280	10,140	10,400	10,510	10,650	10,840	10,930	10,950	10,680	10,440	10,380	10,370	10,540	10,520
Miscellaneous Business Activities	1,240	1,120	1,250	1,240	1,340	1,260	1,380	1,240	1,350	1,330	1,390	1,310	1,430	1,370	1,430	1,370	1,430	1,350	1,420	1,350
Education, Health and Other Services	2,530	2,370	2,630	2,500	2,690	2,570	2,690	2,530	2,710	2,580	2,750	2,620	2,790	2,720	2,870	2,810	2,910	2,800	2,890	2,830
<b>Total full-time staff</b>	<b>36,940</b>	<b>32,660</b>	<b>37,870</b>	<b>34,880</b>	<b>39,580</b>	<b>35,460</b>	<b>39,180</b>	<b>34,650</b>	<b>38,350</b>	<b>34,820</b>	<b>38,200</b>	<b>34,960</b>	<b>38,350</b>	<b>35,200</b>	<b>37,480</b>	<b>34,180</b>	<b>36,510</b>	<b>33,860</b>	<b>36,730</b>	<b>34,350</b>
<b>Part-time staff</b>																				
Agriculture and Fishing	220	190	200	210	220	200	230	160	210	170	200	180	230	150	240	160	210	170	170	150
Manufacturing	440	370	390	360	420	380	420	410	420	380	480	460	430	370	360	320	330	300	320	260
Construction and Quarrying	220	220	240	250	270	280	260	240	240	260	250	260	250	280	250	270	300	270	250	250
Electricity, Gas and Water	30	30	20	30	20	20	20	20	10	20	20	20	20	20	10	10	10	20	20	10
Wholesale and Retail Trades	1,910	1,860	1,930	1,920	2,010	1,800	1,750	1,720	1,730	1,590	1,560	1,620	1,550	1,560	1,640	1,690	1,640	1,850	1,750	1,860
Hotels, Restaurants & Bars	980	790	1,080	930	1,180	950	1,180	940	1,030	950	1,000	900	1,010	780	950	790	920	800	1,040	850
Transport, Storage & Communication	290	170	330	200	370	260	340	230	360	290	320	280	270	230	230	220	220	210	230	230
Computer and related activities	20	20	30	30	40	50	50	50	70	70	60	60	60	60	60	50	50	60	60	60
Financial and Legal Activities	1,200	1,230	1,230	1,240	1,300	1,310	1,320	1,270	1,300	1,330	1,360	1,310	1,280	1,260	1,320	1,250	1,200	1,200	1,180	1,180
Miscellaneous Business Activities	1,090	1,070	1,070	1,080	1,260	1,210	1,270	1,160	1,250	1,180	1,260	1,130	1,190	1,230	1,300	1,260	1,260	1,230	1,330	1,280
Education, Health and Other Services	1,270	1,240	1,290	1,350	1,490	1,390	1,430	1,450	1,480	1,450	1,540	1,460	1,440	1,380	1,470	1,410	1,480	1,400	1,510	1,400
<b>Total part-time staff</b>	<b>7,670</b>	<b>7,180</b>	<b>7,810</b>	<b>7,590</b>	<b>8,570</b>	<b>7,850</b>	<b>8,270</b>	<b>7,630</b>	<b>8,080</b>	<b>7,670</b>	<b>8,050</b>	<b>7,670</b>	<b>7,730</b>	<b>7,310</b>	<b>7,830</b>	<b>7,440</b>	<b>7,610</b>	<b>7,480</b>	<b>7,850</b>	<b>7,530</b>
<b>All staff</b>																				
Agriculture and Fishing	2,370	1,610	2,340	1,680	2,400	1,640	2,400	1,640	2,190	1,580	2,140	1,510	2,100	1,560	2,050	1,520	1,890	1,380	1,710	1,350
Manufacturing	2,510	2,370	2,420	2,320	2,380	2,310	2,380	2,310	2,390	2,250	2,250	2,200	2,260	2,100	2,060	1,890	1,880	1,680	1,710	1,610
Construction and Quarrying	4,190	4,050	4,350	4,600	4,880	4,570	4,540	4,340	4,330	4,250	4,570	4,580	4,660	4,550	4,410	4,170	4,350	4,290	4,590	4,520
Electricity, Gas and Water	620	630	610	650	620	640	610	600	620	610	610	600	580	560	540	510	500	510	500	490
Wholesale and Retail Trades	8,570	8,180	8,630	8,450	8,740	8,270	8,270	7,990	8,080	7,780	7,870	7,760	7,750	7,640	7,810	7,830	7,760	8,200	8,080	8,290
Hotels, Restaurants & Bars	7,720	4,670	7,870	5,040	7,970	5,080	7,690	4,740	7,150	4,670	6,720	4,400	6,540	4,350	6,360	4,350	6,130	4,170	6,110	4,250
Transport, Storage & Communication	2,620	2,350	2,720	2,540	2,880	2,630	2,910	2,600	2,850	2,590	2,790	2,570	2,760	2,490	2,640	2,420	2,600	2,410	2,610	2,410
Computer and related activities	190	210	230	240	270	260	280	290	350	370	360	360	370	360	380	370	360	370	390	400
Financial and Legal Activities	9,710	9,970	10,300	10,780	11,250	11,480	11,600	11,410	11,700	11,830	12,010	12,150	12,210	12,210	12,010	11,690	11,580	11,560	11,730	11,700
Miscellaneous Business Activities	2,330	2,190	2,320	2,320	2,600	2,470	2,650	2,400	2,600	2,510	2,650	2,450	2,620	2,600	2,720	2,640	2,690	2,570	2,750	2,640
Education, Health and Other Services	3,800	3,610	3,910	3,850	4,180	3,960	4,120	3,980	4,180	4,040	4,290	4,070	4,230	4,100	4,340	4,220	4,390	4,190	4,400	4,240
<b>Total staff</b>	<b>44,620</b>	<b>39,840</b>	<b>45,680</b>	<b>42,470</b>	<b>48,150</b>	<b>43,310</b>	<b>47,450</b>	<b>42,280</b>	<b>46,430</b>	<b>42,490</b>	<b>46,250</b>	<b>42,640</b>	<b>46,080</b>	<b>42,510</b>	<b>45,310</b>	<b>41,620</b>	<b>44,120</b>	<b>41,340</b>	<b>44,580</b>	<b>41,890</b>

Note: Staff numbers and vacancies in the Appendices have been rounded independently to the nearest 10. Hence, components may not add to group totals.

## Appendix 2- Staff numbers and vacancies

(all businesses, including one-person businesses)

Staff numbers								
	Jun-02	Dec-02	Jun-03	Dec-03	Jun-04	Dec-04	Jun-05	Dec-05
<b>Full-time staff</b>								
Agriculture and Fishing	1,930	1,470	1,880	1,430	1,740	1,290	1,620	1,270
Manufacturing	1,870	1,770	1,750	1,620	1,610	1,440	1,450	1,410
Construction and Quarrying	4,660	4,550	4,430	4,210	4,350	4,340	4,670	4,630
Electricity, Gas and Water	560	540	530	500	490	490	480	480
Wholesale and Retail Trades	6,330	6,220	6,330	6,300	6,310	6,530	6,510	6,610
Hotels, Restaurants & Bars	5,550	3,600	5,430	3,590	5,230	3,400	5,100	3,440
Transport, Storage & Communication	2,540	2,320	2,480	2,280	2,450	2,290	2,460	2,270
Computer and related activities	370	360	370	370	380	370	380	400
Financial and Legal Activities	10,990	11,010	10,740	10,500	10,450	10,430	10,610	10,590
Miscellaneous Business Activities	1,570	1,530	1,590	1,550	1,610	1,530	1,630	1,540
Education, Health and Other Services	2,890	2,840	2,990	2,950	3,060	2,950	3,060	2,990
<b>Total full-time staff</b>	<b>39,260</b>	<b>36,210</b>	<b>38,500</b>	<b>35,290</b>	<b>37,680</b>	<b>35,050</b>	<b>37,960</b>	<b>35,620</b>
<b>Part-time staff</b>								
Agriculture and Fishing	240	160	250	180	220	170	180	180
Manufacturing	440	390	380	340	340	310	340	280
Construction and Quarrying	280	310	280	300	340	310	280	280
Electricity, Gas and Water	20	20	10	10	10	20	20	10
Wholesale and Retail Trades	1,640	1,650	1,720	1,790	1,750	1,980	1,890	2,030
Hotels, Restaurants & Bars	1,010	790	960	810	930	810	1,040	870
Transport, Storage & Communication	280	240	240	230	240	230	260	250
Computer and related activities	80	80	90	80	80	100	90	90
Financial and Legal Activities	1,310	1,300	1,350	1,280	1,230	1,230	1,220	1,220
Miscellaneous Business Activities	1,280	1,330	1,390	1,350	1,350	1,330	1,440	1,410
Education, Health and Other Services	1,560	1,510	1,620	1,570	1,640	1,580	1,710	1,610
<b>Total part-time staff</b>	<b>8,150</b>	<b>7,770</b>	<b>8,290</b>	<b>7,930</b>	<b>8,130</b>	<b>8,070</b>	<b>8,470</b>	<b>8,220</b>
<b>All staff</b>								
Agriculture and Fishing	2,170	1,640	2,130	1,610	1,970	1,460	1,800	1,440
Manufacturing	2,310	2,160	2,120	1,950	1,950	1,750	1,790	1,690
Construction and Quarrying	4,940	4,860	4,710	4,510	4,690	4,650	4,950	4,910
Electricity, Gas and Water	580	560	540	510	500	510	500	500
Wholesale and Retail Trades	7,970	7,870	8,050	8,090	8,050	8,510	8,400	8,640
Hotels, Restaurants & Bars	6,570	4,390	6,390	4,390	6,160	4,210	6,140	4,310
Transport, Storage & Communication	2,820	2,560	2,720	2,510	2,690	2,520	2,710	2,510
Computer and related activities	440	440	460	450	450	460	480	490
Financial and Legal Activities	12,300	12,300	12,100	11,790	11,680	11,660	11,830	11,810
Miscellaneous Business Activities	2,850	2,850	2,980	2,900	2,960	2,850	3,060	2,950
Education, Health and Other Services	4,450	4,350	4,620	4,520	4,710	4,530	4,770	4,600
<b>Total staff</b>	<b>47,400</b>	<b>43,980</b>	<b>46,800</b>	<b>43,220</b>	<b>45,810</b>	<b>43,120</b>	<b>46,430</b>	<b>43,850</b>

Vacancies							
Jun-02	Dec-02	Jun-03	Dec-03	Jun-04	Dec-04	Jun-05	Dec-05
70	90	60	70	50	70	50	90
120	140	90	60	70	80	70	80
340	390	330	250	300	290	330	320
40	30	20	30	30	20	20	20
470	440	430	380	390	370	400	380
230	360	280	270	250	310	250	360
90	110	90	70	50	70	80	80
30	50	30	20	30	30	30	30
770	590	500	540	580	480	530	620
130	140	110	120	120	100	120	100
140	170	140	140	150	150	140	140
<b>2,420</b>	<b>2,510</b>	<b>2,070</b>	<b>1,960</b>	<b>2,010</b>	<b>1,970</b>	<b>2,020</b>	<b>2,200</b>
20	20	10	30	10	30	10	30
20	30	20	10	+	20	10	20
10	20	10	10	10	20	10	10
10	10	+	+	+	+	+	+
170	180	150	130	130	100	90	90
60	70	70	60	60	50	50	60
20	20	10	20	20	20	20	20
10	20	10	10	10	10	10	10
40	50	30	30	30	40	20	20
180	200	130	140	120	60	60	40
80	100	80	90	100	90	100	100
<b>610</b>	<b>700</b>	<b>530</b>	<b>540</b>	<b>490</b>	<b>420</b>	<b>380</b>	<b>400</b>
90	120	70	100	50	100	50	120
130	170	110	70	70	100	90	90
350	410	340	260	310	310	340	330
50	30	30	30	30	20	30	20
640	620	570	510	520	470	490	470
290	430	360	330	310	360	300	410
110	130	100	90	70	90	100	90
30	70	50	30	40	40	40	30
810	640	530	570	610	510	550	650
300	330	240	260	240	160	180	140
220	260	220	240	250	240	240	240
<b>3,030</b>	<b>3,210</b>	<b>2,600</b>	<b>2,500</b>	<b>2,500</b>	<b>2,400</b>	<b>2,400</b>	<b>2,600</b>

Vacancies as % of employed							
Jun-02	Dec-02	Jun-03	Dec-03	Jun-04	Dec-04	Jun-05	Dec-05
4	6	3	5	3	5	3	7
6	8	5	4	4	6	5	6
7	9	7	6	7	7	7	7
7	6	4	6	6	4	4	4
7	7	7	6	6	6	6	6
4	10	5	8	5	9	5	10
4	5	4	3	2	3	3	4
8	14	8	5	8	8	8	8
7	5	5	5	6	5	5	6
8	9	7	8	7	7	7	6
5	6	5	5	5	5	5	5
<b>6</b>	<b>7</b>	<b>5</b>	<b>6</b>	<b>5</b>	<b>6</b>	<b>5</b>	<b>6</b>
8	13	4	17	5	18	6	17
5	8	5	3	0	6	3	7
4	6	4	3	3	6	4	4
20	31	29	21	23	25	16	15
10	11	9	7	7	5	5	4
6	9	7	7	6	6	5	7
7	8	4	9	8	9	8	8
13	25	11	13	13	10	11	11
3	4	2	2	2	3	2	2
14	15	9	10	9	5	4	3
5	7	5	6	6	6	6	6
<b>7</b>	<b>9</b>	<b>6</b>	<b>7</b>	<b>6</b>	<b>5</b>	<b>4</b>	<b>5</b>
4	7	3	6	3	7	3	8
6	8	5	4	4	6	5	5
7	8	7	6	7	7	7	7
9	5	6	6	6	4	6	4
8	8	7	6	6	6	6	5
4	10	6	8	5	9	5	10
4	5	4	4	3	4	4	4
7	16	11	7	9	9	8	6
7	5	4	5	5	4	5	6
11	12	8	9	8	6	6	5
5	6	5	5	5	5	5	5
<b>6</b>	<b>7</b>	<b>6</b>	<b>6</b>	<b>5</b>	<b>6</b>	<b>5</b>	<b>6</b>

Note: + means a non-zero number less than 5.

### Appendix 3 - Residential Qualifications (see Note 4 for definitions)

(all businesses, including one-person businesses)

	Dec-03				Jun-04				Dec-04				Jun-05				Dec-05			
	Locally Qualified	J- category	Non-locally Qualified	Total	Locally Qualified	J- category	Non-locally Qualified	Total	Locally Qualified	J- category	Non-locally Qualified	Total	Locally Qualified	J- category	Non-locally Qualified	Total	Locally Qualified	J- category	Non-locally Qualified	Total
<b>Full-time staff</b>																				
Agriculture and Fishing	990	+	440	1,430	1,070	+	670	1,740	930	+	360	1,290	1,010	+	600	1,620	880	+	380	1,270
Manufacturing	1,360	10	250	1,620	1,330	10	270	1,610	1,170	10	260	1,440	1,210	10	240	1,450	1,170	10	230	1,410
Construction and Quarrying	3,810	10	390	4,210	3,880	20	450	4,350	3,860	20	460	4,340	4,050	20	600	4,670	4,070	20	530	4,630
Electricity, Gas and Water	470	+	20	500	470	+	20	490	470	+	20	490	460	+	20	480	450	+	30	480
Wholesale and Retail Trades	5,370	40	890	6,300	5,360	40	910	6,310	5,510	40	980	6,530	5,530	40	940	6,510	5,580	40	990	6,610
Hotels, Restaurants & Bars	1,850	20	1,720	3,590	2,080	20	3,130	5,230	1,810	20	1,570	3,400	2,180	20	2,890	5,100	1,760	20	1,660	3,440
Transport, Storage & Communication	2,170	10	100	2,280	2,280	20	150	2,450	2,170	20	90	2,290	2,290	20	150	2,460	2,160	30	80	2,270
Computer and related activities	340	10	20	370	350	10	20	380	340	10	20	370	350	10	20	380	350	10	40	400
Financial and Legal Activities	8,940	370	1,200	10,500	8,900	360	1,200	10,450	8,890	390	1,150	10,430	9,090	410	1,100	10,610	9,070	460	1,050	10,590
Miscellaneous Business Activities	1,380	30	150	1,550	1,430	20	160	1,610	1,380	20	130	1,530	1,460	20	140	1,630	1,410	20	110	1,540
Education, Health and Other Services	2,460	110	380	2,950	2,540	120	410	3,060	2,460	100	380	2,950	2,540	120	410	3,060	2,560	120	310	2,990
<b>Total full-time staff</b>	<b>29,130</b>	<b>620</b>	<b>5,540</b>	<b>35,290</b>	<b>29,670</b>	<b>620</b>	<b>7,400</b>	<b>37,680</b>	<b>28,990</b>	<b>640</b>	<b>5,420</b>	<b>35,050</b>	<b>30,170</b>	<b>690</b>	<b>7,100</b>	<b>37,960</b>	<b>29,460</b>	<b>740</b>	<b>5,420</b>	<b>35,620</b>
<b>Part-time staff</b>																				
Agriculture and Fishing	160		+	180	210		+	220	170		+	170	170		+	180	170		+	180
Manufacturing	280		50	340	250		90	340	240		80	310	260		80	340	210		70	280
Construction and Quarrying	290		10	300	330		10	340	290		20	310	270		10	280	270		10	280
Electricity, Gas and Water	10		0	10	10		0	10	20		0	20	20		0	20	10		0	10
Wholesale and Retail Trades	1,610		180	1,790	1,590		150	1,750	1,810		170	1,980	1,740		150	1,890	1,880		150	2,030
Hotels, Restaurants & Bars	510		290	810	580		350	930	510		300	810	610		440	1,040	560		310	870
Transport, Storage & Communication	230		+	230	230		+	240	230		+	230	260		+	260	240		+	250
Computer and related activities	80		+	80	80		+	80	100		+	100	90		+	90	90		+	90
Financial and Legal Activities	1,260		20	1,280	1,190		50	1,230	1,210		30	1,230	1,210		20	1,220	1,210		20	1,220
Miscellaneous Business Activities	810		540	1,350	820		530	1,350	840		490	1,330	920		510	1,440	970		440	1,410
Education, Health and Other Services	1,480		80	1,570	1,560		80	1,640	1,520		60	1,580	1,630		80	1,710	1,540		70	1,610
<b>Total part-time staff</b>	<b>6,720</b>		<b>1,200</b>	<b>7,930</b>	<b>6,850</b>		<b>1,280</b>	<b>8,140</b>	<b>6,920</b>		<b>1,150</b>	<b>8,070</b>	<b>7,180</b>		<b>1,290</b>	<b>8,470</b>	<b>7,140</b>		<b>1,080</b>	<b>8,220</b>
<b>All staff</b>																				
Agriculture and Fishing	1,150	+	460	1,610	1,280	+	690	1,970	1,100	+	360	1,460	1,190	+	610	1,800	1,050	+	390	1,440
Manufacturing	1,640	10	300	1,950	1,580	10	360	1,950	1,410	10	330	1,750	1,470	10	310	1,790	1,380	10	300	1,690
Construction and Quarrying	4,100	10	400	4,510	4,210	20	460	4,690	4,150	20	480	4,650	4,330	20	600	4,950	4,350	20	540	4,910
Electricity, Gas and Water	490	+	20	510	480	+	20	500	490	+	20	510	480	+	20	500	470	+	30	500
Wholesale and Retail Trades	6,980	40	1,060	8,090	6,950	40	1,060	8,050	7,330	40	1,140	8,510	7,270	40	1,090	8,400	7,460	40	1,140	8,640
Hotels, Restaurants & Bars	2,360	20	2,010	4,390	2,660	20	3,480	6,160	2,320	20	1,870	4,210	2,790	20	3,330	6,140	2,320	20	1,980	4,310
Transport, Storage & Communication	2,400	10	100	2,510	2,520	20	160	2,690	2,400	20	100	2,520	2,540	20	150	2,710	2,400	30	90	2,510
Computer and related activities	410	10	30	450	430	10	30	460	430	10	20	470	440	10	30	480	440	10	50	490
Financial and Legal Activities	10,200	370	1,220	11,790	10,080	360	1,250	11,680	10,100	390	1,180	11,660	10,300	410	1,120	11,830	10,280	460	1,070	11,810
Miscellaneous Business Activities	2,180	30	690	2,900	2,240	20	690	2,960	2,210	20	620	2,850	2,380	20	660	3,060	2,380	20	550	2,950
Education, Health and Other Services	3,950	110	460	4,520	4,100	120	490	4,710	3,980	100	440	4,530	4,170	120	480	4,770	4,100	120	380	4,600
<b>Total staff</b>	<b>35,850</b>	<b>620</b>	<b>6,750</b>	<b>43,220</b>	<b>36,520</b>	<b>620</b>	<b>8,680</b>	<b>45,820</b>	<b>35,910</b>	<b>640</b>	<b>6,560</b>	<b>43,120</b>	<b>37,350</b>	<b>690</b>	<b>8,390</b>	<b>46,430</b>	<b>36,610</b>	<b>740</b>	<b>6,500</b>	<b>43,850</b>

Notes: j-category employees are employed on a full-time basis only; + means a non-zero number less than 5.