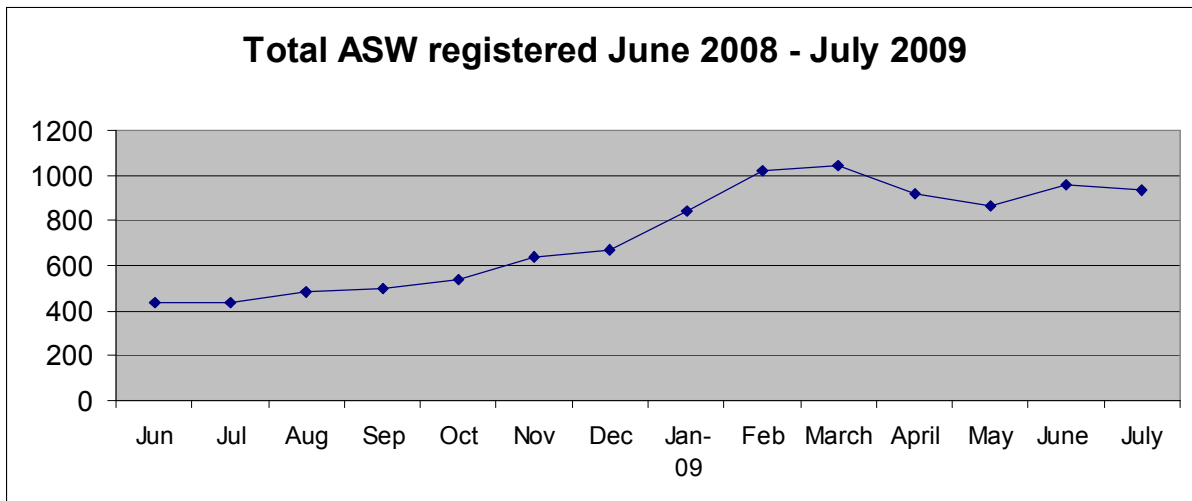


Social Security Department
Registered Unemployed Individuals Actively Seeking Work (ASW)
31 July 2009

937 people were registered with the Department as unemployed and actively seeking work (ASW) on 31 July 2009. Of these 616 were men and 321 women.



The figure for July shows a very small decrease of 19 from 956 in June.

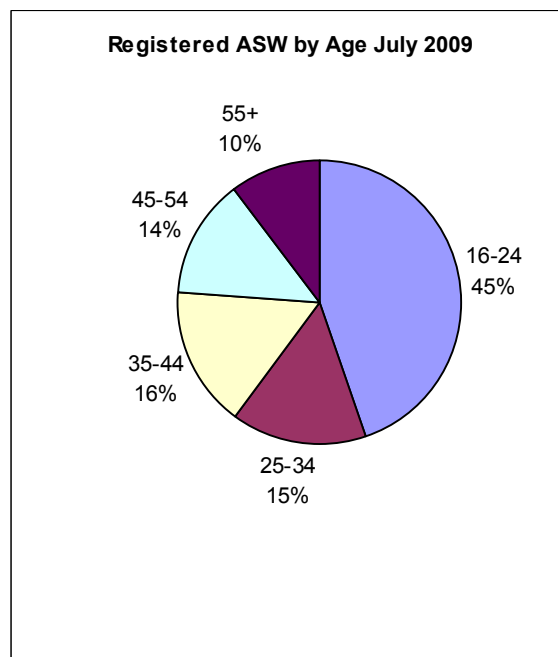
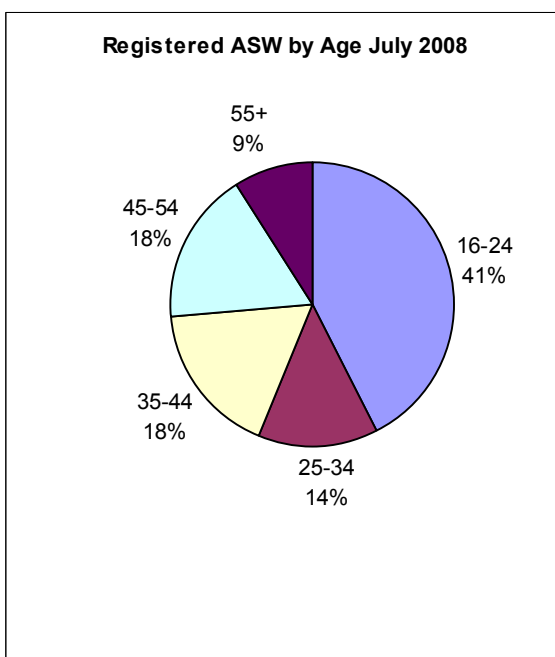
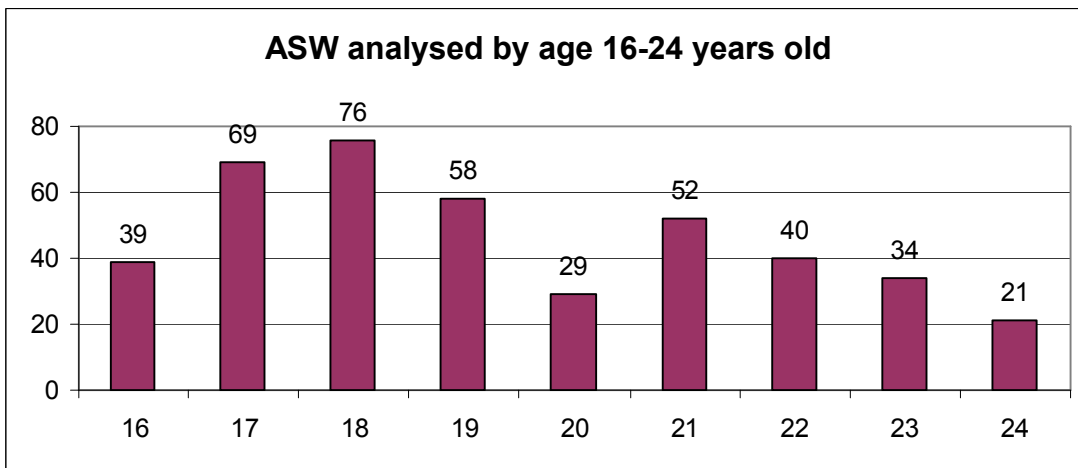
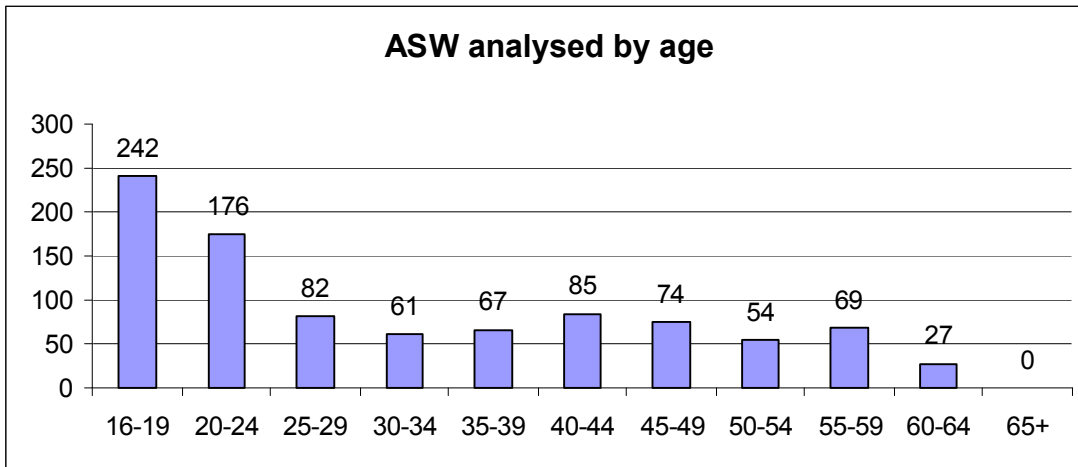
Of the 937 people registered as ASW, 662 are currently receiving Income Support¹.

The use of the learning area facilities has decreased slightly with 806 sessions in July compared to 838 in June.

¹ The total number of adults receiving Income Support without work will be greater than this figure, however this is the number registered on 31 July as ASW.

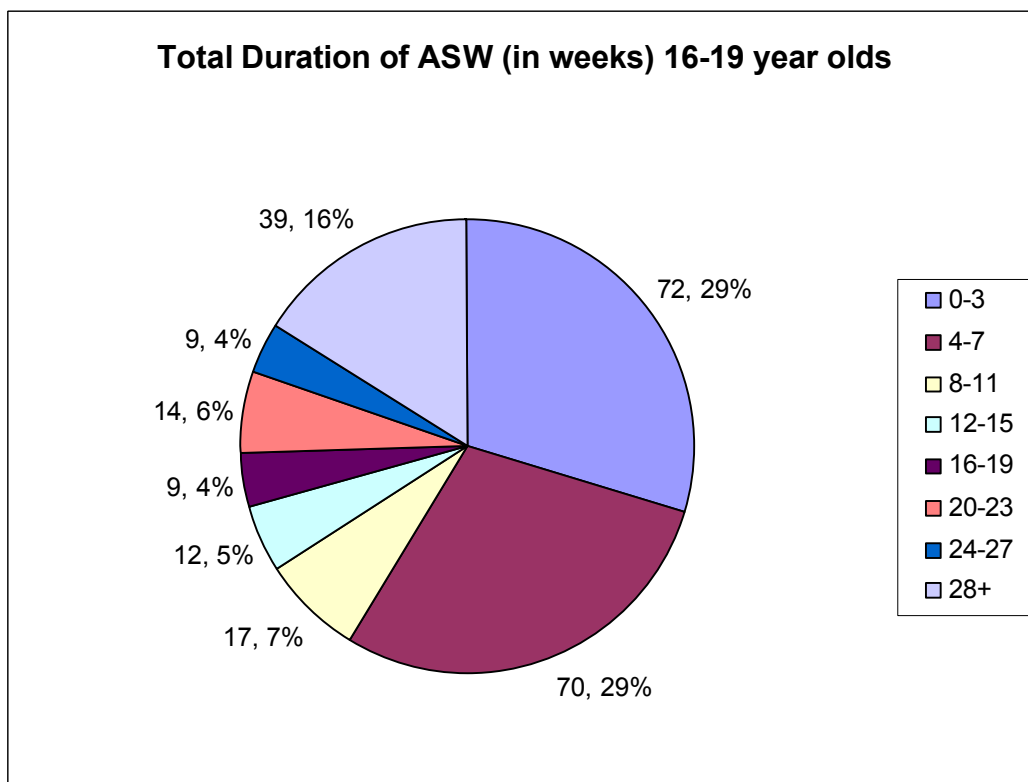
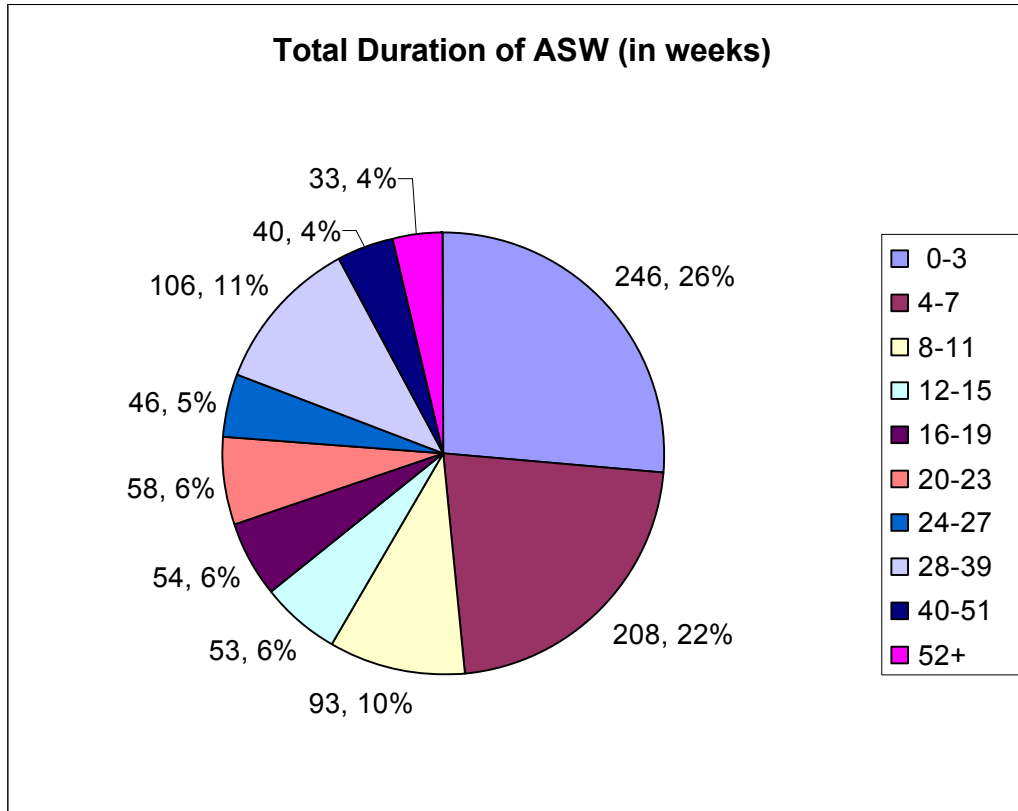
Registered ASW by age

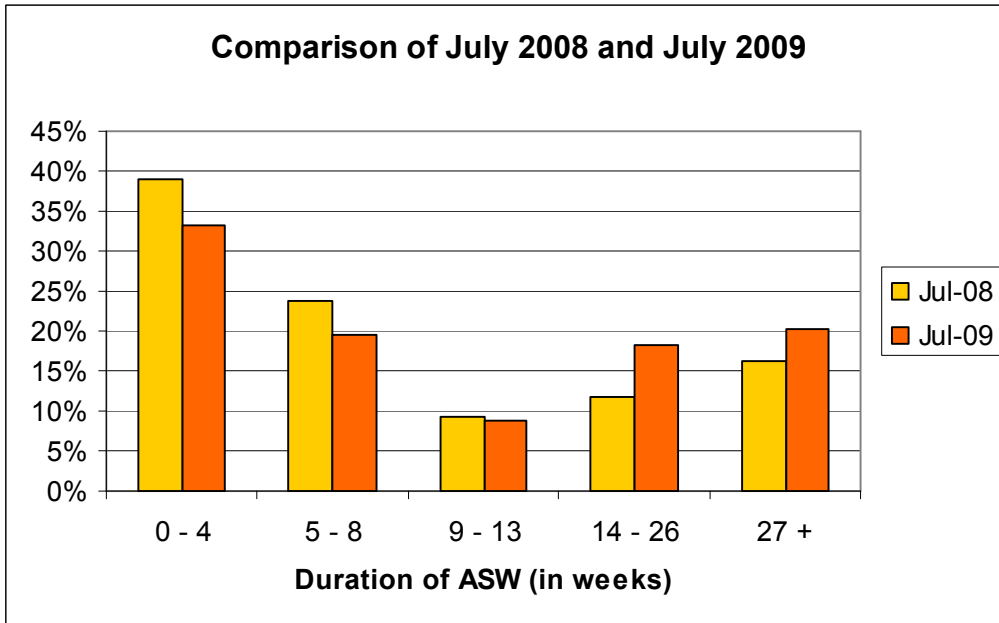
The charts below show the number of people registered as ASW by age as at 31 July 2009. 45% of those registered are aged 24 or below.



Duration as ASW

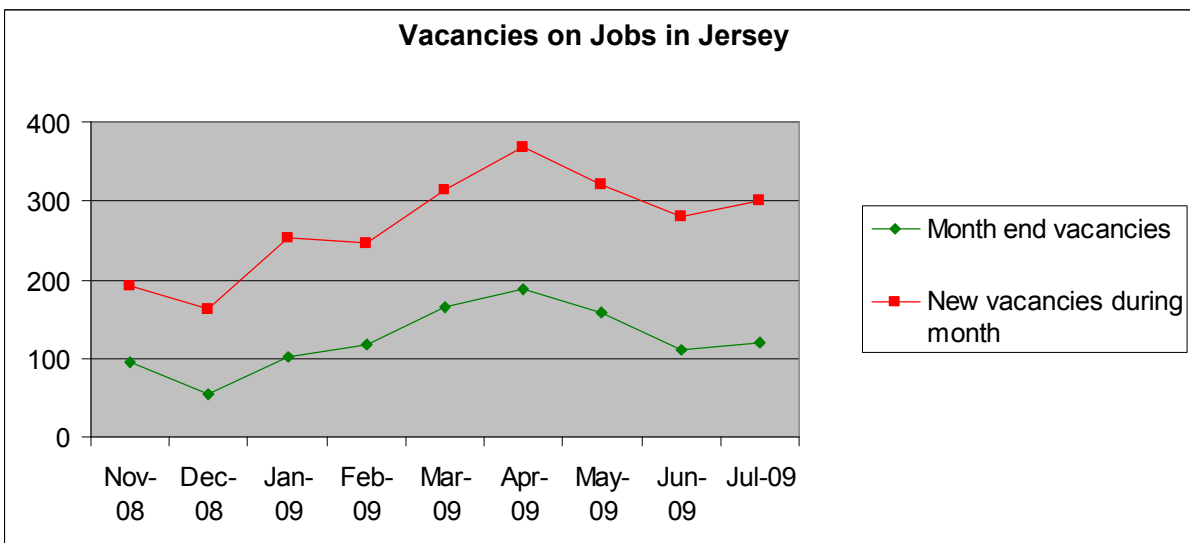
The majority of people who register as ASW with the Social Security Department remain registered for less than 12 weeks. The chart below provides information on the periods of time people have been registered with the Department as at 31 July 2009.





It should be noted that the number of people registered with the department in July 2008 rose significantly as a result of targeting Income Support Jobseekers.

At the end of July 2009, 119 vacancies were advertised on the Jobs in Jersey website (<http://www.gov.je/jobs/>). This compares with 214 vacancies at the end of July 2008. During the month 300 new vacancies were posted, compared to 423 in July 2008. Although vacancies are running at a much lower level than this time last year, numbers have picked up since the beginning of 2009.



General Note

It should be remembered that there is no statutory requirement for all unemployed residents of Jersey to register as actively seeking work with the Social Security Department. As such the data above is a useful indicator of the level of unemployment in the Island but it does not attempt to measure the actual rate of unemployment. This is undertaken on an annual basis through the Jersey Annual Social Survey.