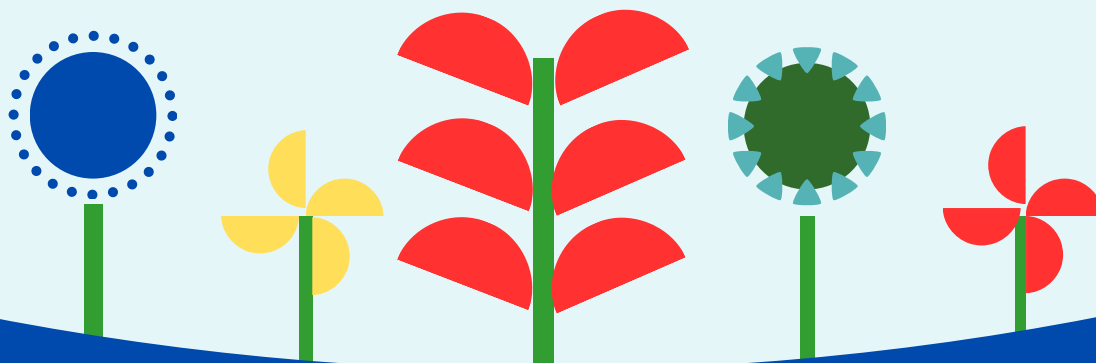


A FACTSHEET

for Parents and Carers



JERSEY SCHOOLS REVIEW FRAMEWORK

What is the Jersey Schools Review?

The Jersey School Reviews are independently led assessments. They are used to benchmark the quality of education offered by Jersey's schools.

When will the reviews take place?

Reviews can take place throughout each academic year. Each school is visited over a 3 to 4 year cycle. During a review a team of reviewers will visit the school over 3 days.

When will I find out that my child's school is being reviewed?

Schools are given four working days' notice before a review. They will notify parents and carers as soon as possible to let them know when a review is taking place.

Who will be reviewing my child's school?

Each review team is made up of:

- An off-Island lead reviewer experienced in conducting school inspections in other jurisdictions.
- One or more school leaders currently working in the other Jersey Schools.
- An officer from the Department for Children, Young People, Education and Skills (CYPES).

Why are the reviews taking place?

Your child's development and achievement is at the heart of our education system in Jersey. Reviews help us to:

- Check provision for wellbeing and personal development.
- Determine if pupils are achieving as much as they can.
- Provide information to you as parents and carers to support ongoing school improvement.
- Confirm standards are being met.
- Promote school improvement.
- Encourage schools to work together.
- Ensure public money is being used effectively.



How can I make my views known?

During a review, parents and carers are invited to complete a questionnaire about the school. Their feedback is sent straight to the Lead Reviewer. The information shared provides a valuable source of evidence about the school.

What will the review team be assessing?

During the three-day review, the review team will check key areas:

- That pupils are learning in a safe, nurturing environment.
- The standards of the curriculum, teaching and learning.
- The behaviour and attendance of pupils.
- How well the school provides for pupil's personal development of pupils.
- The effectiveness of the school's leadership.

What will the school team be doing in my child's school?

To gain an understanding of how well the school is doing in each of these areas, the review team will:

- Speak to pupils.
- Meet with and survey staff.
- Look at pupil's work.
- Visit lessons.
- Review school data and other information.

Schools are not expected to do anything different to what they usually do on a day - to - day basis so the run up to the review and the review itself should not be disruptive to your child or other children.

The reviewers will wish to meet groups of children to hold discussions. These conversations will be informal, positive exchanges. The final report will not contain any individual names or details of the children spoken to. The process will be fully compliant with data protection protocols.

Where will the final report be published?

Following each review, the school, parents and CYPES receive a report of the findings. The most recent report of your child's school is available on the Jersey Schools Review Framework gov.je webpage. Reports are published within 19 working days of the end of the review.

What happens if a school is in need of improvement in a number of areas?

Reviews do not give an overall judgement grade of a school. However, each school is assessed under the four key areas detailed in the Jersey Schools Review Framework Handbook. Should any school have a number of areas that require significant improvement, a School Improvement Board will support the school make swift and enduring change.

LIKE TO KNOW MORE?

You can also find more information at:
www.gov.je/jerseyschoolsreviewframework