

La Collette 'Industrial Area' Multi Agency Off-Site Emergency Plan (Public Release Version)

If a major incident has been declared, or threatened and you are not familiar with this plan take the following action:

1. Inform the Emergency Services
2. Activate your organisations 'On-Site' Emergency Plan
3. Consider guidance contained within this Off-Site Plan

Version 2: July 2015
Next Review Date: July 2016



Document Control

Title and Ownership

This document is entitled the La Collette 'Industrial Area' Multi Agency Off-Site Emergency Plan 2015. It replaces all previous editions. The Emergency Planning Board (EPB) has the rights of ownership of this document, with publication and distribution being agreed by the EPB members. The Emergency Planning Officer (EPO) should be advised immediately of any changes in circumstances that may materially affect the plan in any way.

Distribution

Individual partner agencies may produce this document on their websites. Permission is granted to those agencies to copy and print the contents of the document by the EPB. An electronic version of this document can be found on the States of Jersey intranet.

Protective Marking

This document is not subject to protective marking classification and is suitable for disclosure under the Code of Practice on Access to Information, States of Jersey.

Acknowledgements

The Emergency Planning Board would like to acknowledge the assistance received from partners and stakeholders in the writing of the plan.

The contents of the La Collette 'Industrial Area' Multi Agency Off-Site Emergency Plan 2015 have been drafted in accordance with the latest agreed procedures of the States of Jersey Emergency Services and the Joint Emergency Services Interoperability Principles (JESIP).

Amendments and Version Control

A review of this document will take place bi-annually, led by the EPO. Partner organisations must notify the EPO of any amendments or additions they seek to have included. These can be sent by email to the EPO at envprotection@gov.je

Amendment	Date	Name
La Collette 'Industrial Area' Multi Agency Off-Site Emergency Plan 2013	11.2.2013	Michael Long
Validation Exercise	17.4.2013	Michael Long
Insertion of Evacuation Leaflet	15.4.2014	Michael Long
La Collette 'Industrial Area' Multi-Agency Off-Site Emergency Plan 2015	30.7.2015	Joseph Carnegie

Contents

Document Control.....	2
Title and Ownership.....	2
Distribution	2
Protective Marking.....	2
Acknowledgements.....	2
Amendments and Version Control	2
Contents.....	3
1. Purpose	4
1.1 Activation of Plan	4
2. Background	6
2.1 Overview of Site	6
3. Planning Assumptions.....	6
4. Risks Assessment	6
4.1 Community Risk Register	6
4.2 La Collette Petroleum and Gas Storage Safety Domino Effects Study	7
4.4 Vulnerable Premises, Populations and Emergency Contact details	7
5. Business Continuity.....	8
6. Emergency Response & Command & Control	9
6.3 Rendezvous Points (RVPs) & Holding Areas	9
6.6 Traffic Control Points (TCPs)	10
6.7 Evacuation / Rest Centre	10
6.9 Multi Agency Situation Report – Common Recognised Information Picture	10
7. Evacuation, Shelter & Humanitarian Assistance.....	11
7.2 Harbour Flame Alert	11
7.3 Action on the Sounding of the La Collette Emergency Siren.....	11
7.4 Action by Fort Regent	11
8. Warning and Informing, Public Information, Media & Communications.....	12
8.1 Warning and Informing the Public.....	12
8.2 Vulnerable Premises and Populations	12
9. Training, Exercising and Validation of the Plan	13
Schedule A – Cordons and Safety Exclusion Zones.....	14
Schedule B – CHEMET Form A	15
Schedule B – CHEMET Form B.....	16
Schedule C – Public Information Message.....	17
Schedule D – La Collette Emergency Evacuation Leaflet.....	18

1. Purpose

The purpose of this plan is to identify the multi agency response to a major incident at La Collette Industrial Area (hereafter referred to as 'La Collette') and the actions the States of Jersey will undertake to protect and minimise the impact of the incident on people on the site and the wider community of St Helier and Jersey.

The plan applies available information and key assumptions on the impact of an incident at La Collette. This plan also reflects the principles for joint working and the ethos of the Joint Emergency Services Interoperability Principles (JESIP) project. These principles of co-location, communication, co-ordination, the joint understanding of risk and shared situational awareness will be key to the successful resolution of any major incident at La Collette, which would undoubtedly require a multi-agency response.

The plan sets the specific responsibilities of organisations for the management of an incident at the site. Details of the Island's generic response to major incidents, common objectives, emergency powers, definitions, roles and responsibilities of responders are included in the ***States of Jersey Emergency Measures Plan 2014, which should be read in conjunction with this plan.***

1.1 Activation of Plan

The La Collette Multi Agency Off-Site Emergency Plan should be activated in the event of any of the following situations:

- A Major Incident has been declared by the Emergency Services at the site
- An incident has occurred with effects impacting on the public and/or environment
- An incident has occurred which could be reasonably expected to escalate to the declaration of a major incident

The plan can be activated by **any stakeholder** who has reason to believe a major accident or incident has occurred, or is about to occur, by contacting the Ambulance and Fire and Rescue Service Combined Control Room (CCC) and/or States of Jersey Police.

The plan **will not** be activated if:

- an accident has been successfully contained within the site boundaries, the impact of which is unlikely to impact on the public and/or environment
- an incident has occurred involving a release of a substance which has been identified as not presenting a hazard to the public or the environment (although public information will be required)

1.2 Aim of Plan

To provide a multi-agency plan to prepare and respond to incidents at La Collette.

1.3 Objectives

- To inform and protect the community of the consequences of a major incident within the La Collette Industrial Area

- To encourage collaboration between site operators, local businesses and the community
- Promote inter-agency working and understanding of terminology
- Providing common graphical data including maps and plans

1.4 Scope and Operational Planning

The procedures included in this plan have been written to develop an effective response to an incident occurring at one of the industrial units at La Collette, which has the potential to escalate and have an affect on any of the other sites within the boundary of the La Collette Industrial Area or adjoining residential and commercial areas.

The plan does not cover details of 'On-Site' emergency plans and arrangements, which are the responsibility of specific organisations located at La Collette.

In preparation of this plan, consideration has been given to human rights, discrimination, disability, race relations and diversity legislation and guidance.

1.5 Links with Local Plans & Reference Material

The following documents and reference material should be read in conjunction with this plan:

1.6 States of Jersey Emergency Response Plans

- States of Jersey Emergency Measures Plan 2014
- States of Jersey Maritime Counter Pollution Response Plan
- H&SS Major Incident Plan

1.7 La Collette On-Site Plans

- Jersey Gas & LPG Storage Site
- Jersey Electricity
- Jersey Harbours Emergency Procedures Plan La Collette 2015
- Energy from Waste Plant
- Fuel Consortium

1.8 Legislation

This plan has been prepared with regard to the following legislation:

- Emergency Planning and Powers (Jersey) Law 1990
- Data Protection (Jersey) Law 2005
- Health and Safety at Work (Jersey) Law, 1989
- The Petroleum (Jersey) Law, 1984
- Public Health Law 1934
- Statutory Nuisances (Jersey) Law 1999
- Health (Implementation) (Jersey) Law 2008

1.9 Regulations

This plan has been prepared in line with guidance from the following UK Regulations:

- Pipelines Safety Regulations 1996 (PSR) & Control of Major Accident Hazards Regulations 1999 (COMAH)¹

2. Background

2.1 Overview of Site

- La Collette is located to the south/south-east of St Helier, on land in public ownership and reclaimed from the sea in 1977
- The site is 13.1 meters above Admiralty Datum line and not prone to flooding
- The administrative responsibility for the public land is shared between Property Holdings Division of the Treasury and Resources Department, and Jersey Harbours Division of the Economic Development Department
- Prevailing winds are generally from a south westerly direction

3. Planning Assumptions

3.1 Planning Assumptions

A number of possible major accident scenarios have been identified by the site operators and are included in the *States of Jersey Community Risk Register 3rd Edition dated February 2014*.

3.2 General Assumptions

- An incident could occur at any time
- There is a possibility of a domino effect across several installations
- A major incident would involve all the States Emergency Service assets
- Strategy to manage major fires at the site includes a 'managed burn out'
- La Collette is a vital element of the Island Critical National Infrastructure
- The 'at risk' population, in the vicinity of La Collette could vary between 30,000 and 50,000 people depending upon the time and day of an incident
- La Collette and Jersey (St. Helier) Harbour is the 'central hub' of the Island's transport and supply lines to and from the UK and Europe both of which are likely to be affected by an incident
- Jersey has developed a 'just in time economy' with a dependence on daily supplies from the United Kingdom, that could be severely disrupted

4. Risks Assessment

4.1 Community Risk Register

The *States of Jersey Community Risk Register Version 3* identifies major incident risks associated with the site.

¹ Whilst these regulations do not apply in Jersey, they are recognised as good practice in meeting the legal requirements set out under the Health & Safety at Work (Jersey) Law, 1989

4.2 La Collette Petroleum and Gas Storage Safety Domino Effects Study

La Collette provides the main petroleum and liquid petroleum gas storage facilities for the Island. Following the major explosion and fire at Buncefield in 2005 the States of Jersey reviewed the risks at La Collette and, utilising Atkins as specialist advisors, revised the Hazard Zones which are now incorporated in the 2011 Island Plan. These zones provide planning controls to limit the number of people at risk in the area, whilst allowing beneficial use of the land.

The States recognise that there is a risk that an accident at the gas storage, petroleum storage or fuel unloading jetty could develop into an explosion or fire which could escalate to create an incident at one of the other facilities.

4.3 The major hazard installations at La Collette are:

- **Jersey Gas Ltd** – where LPG (propane and butane) is stored in large mounded vessels, used to produce gas for transmission to the Island’s gas supply network, and road tankers are also filled at the site.
- **The Fuel Consortium** operated by La Collette Terminal Ltd – where various fuels such as petrol, diesel, kerosene, Avgas and Jet A1 are stored in large storage tanks and road tankers filled.
- **Fuel Jetty with ship off-loading operations and associated transfer pipelines** to the Jersey Gas and the Fuel Consortium sites.

It has also been recognised that a major accident at one of these installations could lead to a loss of containment of hazardous material at one of the neighbouring installations, resulting in a subsequent major accident at that site.

This is known as a domino effect. For example, a fire or explosion at one site could trigger the bursting of a vessel or tank at a neighbouring site, which could then lead to subsequent fires and explosions, potentially on a larger scale.

Further details of the Atkins study can be obtained from their technical report reference 5052526/TN4/Issue (15 October 2012).

4.4 Hazardous Pipelines

There are a number of major accident hazard pipelines (MAHPs) crossing La Collette.

Major Accident Hazard Pipelines fall within the PSR 1996 scope (not applicable in Jersey). These product transfer lines are only ‘live’ for gas products when a ship discharges gas, but for other fuel products will always have product in them. Each line has its own scheme of examination and operates at relatively low pressures.

4.5 Vulnerable Premises, Populations and Emergency Contact details

Details of the vulnerable premises and emergency contact details of key holders of buildings within the boundaries of La Collette are maintained separately from this plan by Property Holdings and Ports of Jersey.

4.6 Vulnerable Environments

The most significant vulnerable environment in the vicinity of the La Colette is the RAMSAR site located between the Seaward end of the La Collette tanker berth / the

Dogs Nest / Demi des Pas Light / La Conchiere to Brett Rock Beacon / Horn Rock to the end of Gorey Pier.

4.7 Other vulnerable environments include:

Name	Type	Location	OS Grid Ref
RAMSAR Site	Nature Environment	South Eastern Sea Border	
Recreation	Lido Style Pool (Tidal) and beaches	Havre Des Pas to Green Island	
Shellfish Industry	Intensive Shellfish Farming	East Coast Royal Bay of Grouville	
St. Helier	Population Centre	St Helier	

5. Business Continuity

5.1 Business Continuity

A large-scale emergency response to an incident at La Collette will inevitably place considerable strain on the Emergency Services and responding agencies, potentially for a considerable duration of time. Whilst Business Continuity Management (BCM) arrangements are not detailed in this document, it is inevitable that business as usual could be severely challenged.

5.2 Business Continuity themes for consideration include:

- Maintaining critical functions of the various services, as far as possible, throughout an incident is essential for all organisations. Contingency planning, including the maintenance of adequate staffing levels, must be undertaken
- Redistribution of staff from support to BCM roles will be an important consideration, and appropriate training to ensure the best use of available skills and experience to fill essential roles should be delivered
- Identifying different ways of working may be needed to ensure continued delivery of critical services and functions and maintaining business as normal
- The management of non-essential activities and routine training, cancellation and reinstatement
- Appropriate and viable cover for loss or disruption of supplies as a consequence of a supply chain failure
- Preparations and plans for loss of essential services, particularly utilities, fuel or transportation failures

An emergency at La Collette has the potential to cause significant disruptions to local business and organisations due to:

- Evacuation
- Denial of Access
- Process Downtime
- Supply Chain Disruption
- Communications Restrictions

- Building Damage
- Reputation / Image impact
- Disruption to Island's daily fuel requirements

6. Emergency Response & Command & Control

6.1 Declaration of a Major Incident

The impact and consequences of an incident at La Collette is likely to meet the criteria for the declaration of a '**Major Incident**'.

6.2 Definition of a Major Incident

A major incident is any emergency that requires the implementation of special arrangements by one or all of the Emergency Services, and will generally include the involvement, either directly or indirectly, of large numbers of people. For example:

- rescue, treatment and transportation of a large number of casualties
- large-scale combined resources of the Emergency Services
- mobilisation and organisation of the Emergency Services to manage the threat of death, serious injury or homelessness to large numbers of people
- handling of a large number of enquiries likely to be generated from the public and the news media (usually addressed to the police)

6.3 Rendezvous Points (RVPs) & Holding Areas

The decision to locate a RVP will be made following a dynamic risk assessment based on the nature of the hazard and environmental conditions (incl. weather, wind speed and direction).

6.4 REDACTED

6.5 Cordons & Road Closures

The outer cordon will be established by SOJP / Honorary Police in the early stages of the response. Cordons are dynamic and will usually follow boundaries that clearly define lines of safety and management control. This cordon may be extended to include other sites depending on the nature of the incident.

Initial cordon and evacuation zone may extend to 600 metres from the epicentre of the incident.

Access through the inner cordon will be controlled by SJFRS based on the personal safety of responding officers.

An outer cordon will be established by SOJP & Honorary Police in accordance with the nature of the hazard. Access through the outer cordon will be controlled by SOJP & Honorary Police. Access through cordons will be provided to essential staff upon production of valid identification and reason. Details of all staff entering cordons will be recorded. **See Schedule A: Cordons and Safety Exclusion Zones**

6.6 Traffic Control Points (TCPs)

TCP's will be established by SOJP / Honorary Police in the early stages of an emergency response as detailed below and will be taken with due regard to dynamic risk assessments based on the nature of the hazard and the environmental conditions.

- Information Redacted

6.7 Evacuation / Rest Centre

In the event of evacuation, the Piazza inside Fort Regent has been identified as the primary Evacuation Assembly Point / Rest Centre. The SOJP supported by Education, Sport & Culture staff at Fort Regent and the other Emergency Services, Parish of St Helier, Honorary Police and will make a dynamic decision whether or not to establish a Rest Centre at this location (with the expectation that many of those affected will wish to go to their homes or elsewhere if safe to do so).

6.8 Communications & Interoperability

Only intrinsically safe radios (ISRs) should be used where there is any risk of igniting explosive atmospheres. Non-IS items such as mobile phones, pagers and man-made fibre clothing are all capable of creating incendive sparks and must not be worn or taken within the inner cordon.

6.9 Multi-Agency Situation Report – Common Recognised Information Picture

There will be a requirement for all organisations involved in the response to contribute to the Multi-Agency Situation Report – Common Recognised Information Picture (CRIP) which will be compiled by the States of Jersey Police. A template of the CRIP is included in the **States of Jersey Emergency Measures Plan 2014**.

6.10 Scientific and Technical Advice cell (STAC)

The Public Health Department are responsible for initiating a Scientific and Technical Advice Cell (STAC) if deemed appropriate. The STAC brings together technical experts operating under the direction of the Strategic Co-ordinating Group (SCG).

The STAC will provide advice on issues such as the impact on the health of the population, public safety, environmental protection, and sampling and monitoring of any contaminants.

6.11 Jersey Met Office

The Jersey Met Office will provide information and advice and predictions on wind and weather direction to support decision making regarding safety and evacuation of the public and responders. **See Schedule B: CHEMNET Form A & B**

6.12 Public Health Emergencies of International Concern (PHEIC)

Under the terms of the World Health Organisation (WHO) - International Health Regulations 2005 (IHR (2005)), jurisdictions are required to notify WHO of any events that are likely to have public health implications beyond their borders. An incident at the La Collette has the potential to produce a plume that could travel south or east towards France. Jersey has, at the request of the UK Government, passed the Health (Implementation) (Jersey) Law 2008 to comply with the requirements of (IHR (2005)

requiring the referral of incidents to the UK Health Protection Agency, Centre for Infections, at Colindale who are the focal point for contact with the WHO.

7. Evacuation, Shelter & Humanitarian Assistance

7.1 Evacuation

In situations where there is an imminent risk to the public e.g. risk of explosion, building collapse etc, and only when they can be safely removed from the hazard area, the SOJP, in consultation with SJFRS will coordinate the evacuation of local residents. Evacuation may be required because of a variety of reasons including:

- An incident which the Emergency Services have alerted
- A threat directly aimed at the La Collette complex
- A threat directly aimed at a building within the La Collette complex
- A threat received elsewhere impacting on the La Collette complex
- Discovery of a suspicious item in a building
- Discovery of a suspicious item or vehicle outside within the complex

7.2 Harbour Flame Alert

The long-standing emergency evacuation procedure 'Harbour Flame Alert' will continue to provide the primary response to activate the emergency evacuation of La Collette.

Following notification of an incident from the senior Fire Officer-on-site the Combined Control Room will activate the La Collette Evacuation Alarm. The signal is sounded for a period of five minutes. The MRCC will activate maritime resources to assist with the emergency and evacuation via the sea.

The Emergency Services should consider contacting vulnerable populations to alert them to the developing hazards, and what action they should take. **See Schedule C: Public Information Messages.**

7.3 Action on the Sounding of the La Collette Emergency Siren

- Stop what you are doing and switch off operating equipment and extinguish sources of ignition before leaving buildings
- Leave your workplace immediately and proceed on **foot** to the **Piazza inside Fort Regent**. Vehicles should not be used to evacuate the site.
- Managers should ensure that their premises are empty before leaving and account for their own personnel at the **Piazza inside Fort Regent**

7.4 Action by Fort Regent

In anticipation of the arrival of people evacuated from La Colette the Duty Manager at Fort Regent will ask for verification of alarm activation by contacting the States of Jersey Police Control Room.

7.5 All Clear

The decision to issue an 'All Clear' will be made by the Tactical (Silver) Coordination Group. The local media will be asked to broadcast the appropriate all clear and public reassurance messages.

8. Warning and Informing, Public Information, Media & Communications

8.1 Warning and Informing the Public

In most scenarios involving the release of a hazardous chemical, initial advice to the public will be to *'Go In, Stay in and Tune In'* to minimise the risk of exposure. This decision will be reviewed on a regular basis during an incident.

8.2 Vulnerable Premises and Populations

Businesses and premises within the La Collette area will be provided with information to enable them to appreciate the risks that are present within the area, together with advice on what to do in an emergency. In exceptional circumstances, people living outside this area could be affected by a major accident.

See Schedule D: La Collette Emergency Evacuation Leaflet

8.3 Media & Communications

An emergency at La Collette is likely to draw significant attention from local, National and International media attention.

The SOJP are responsible for coordinating media enquiries and managing the media in the emergency response phase of an incident, supported by the Chief Minister's Communications Unit and other department communications officers to ensure all statements and messages are balanced, accurate, timely, and conveyed through all appropriate channels.

8.4 Press Bureau

The SOJP Press Bureau will be located at Police Headquarters and is the single point of contact for media coordination during a major incident, responsible for managing media enquiries.

8.5 Media Centre

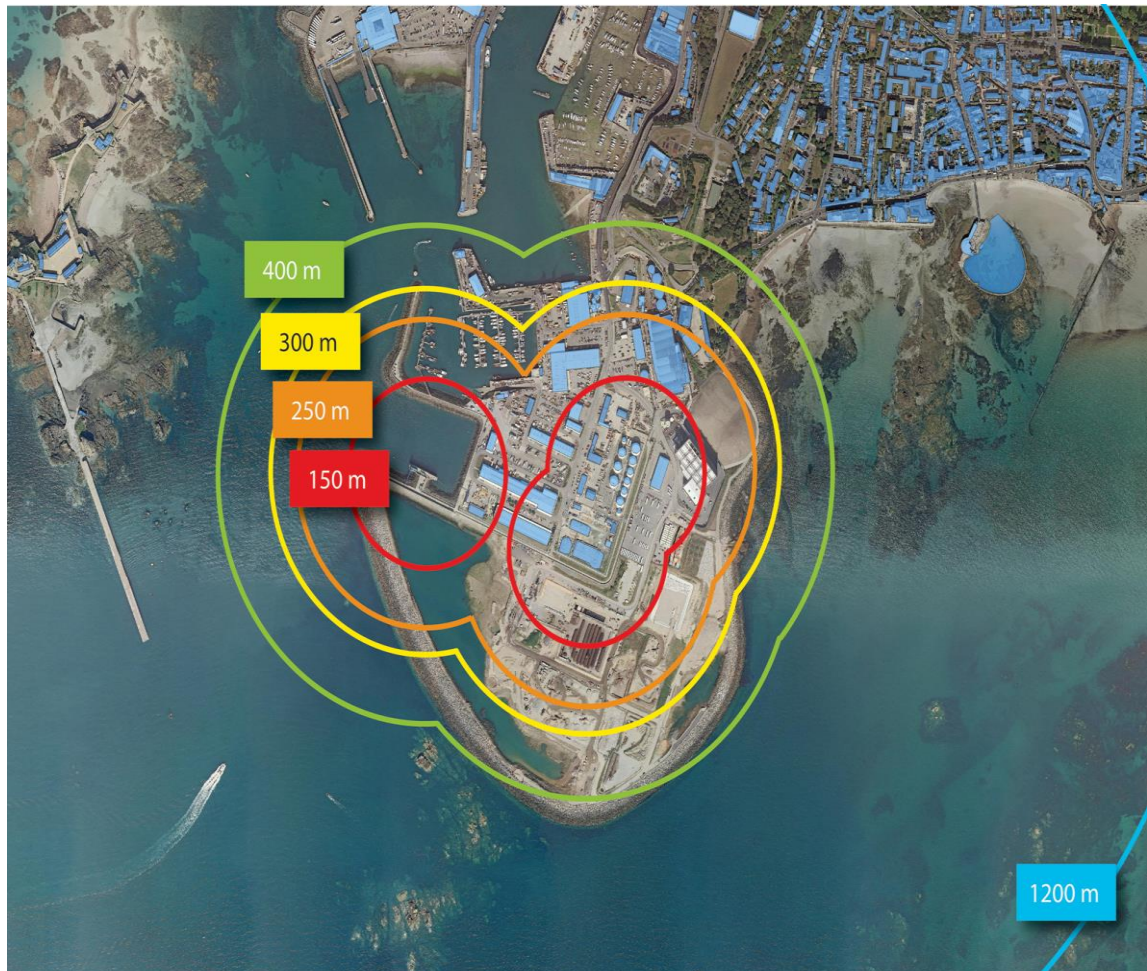
A Media centre may be established by the States of Jersey Police. While every organisation should be prepared to field media enquiries, the Multi-Agency Media Centre may be established to provide a focal point for press releases, bulletins, updates and conferences.

9. Training, Exercising and Validation of the Plan

Partner agencies should use this plan and references to review its training and exercising programmes for their 'On-Site' Plans.

The Multi-Agency Exercise Planning Group will consider training and exercising of the La Collette Industrial Area Off-Site Emergency Response Plan commensurate with its ranking on the States of Jersey Community Risk Register and availability of funding.

Schedule A – Cordons and Safety Exclusion Zones



Schedule B – CHEMET Form A



CHEMET alert

Notification of a chemical emergency

Please confirm request for CHEMET service on 01534 448763

When complete, Fax to the Jersey Met duty forecaster on 01534 448778

Notification made by:

CHEMET initiation date / time:

Call back number Tel:

Contact number to send forecast Fax:

1. Location of incident (Include 6 fig OS grid ref):

Name (and address of site if known):

Other relevant site details:

2. Date and time of Release:

3. Name of chemical (for information purposes only):

N.B. CHEMET assumes neutral buoyancy

For sections 7 to 9 please tick the appropriate box:

4. Site Characteristics Urban Rural Coastal

5. Nature of Release Continuous Instantaneous Fire at Site

6. Site Weather Details (if available):

Wind direction from: N NE E SE S

SW W NW In degrees if known.....

Wind speed Calm/ no wind Light Moderate Strong

Approx. cloud cover Nil ¼ cover ½ cover ¾ cover Full cover

Weather Dry Rain Snow Fog

Is there snow lying? Yes No

7. Extra Information:



Schedule B – CHEMET Form B

CHEMET forecast
(Including 'area at risk' map)

To: _____ of: _____ Police/Fire
 From Duty Forecaster Name: _____
 Tel: 01534 448763 Fax: 01534 448778

- | FORECAST PERIOD | <u>From *</u> | <u>to *</u> | <u>Date / Time</u> |
|--|---------------|-------------|----------------------|
| 8. Forecast for incident at
Release Time | * | | <u>Local</u> |
| 9. Surface wind direction from | * | | <u>Compass point</u> |
| | * | | <u>Degrees</u> |
| 10. Surface wind speed | * | | <u>km/h</u> |
| 11. Most likely effect of forecast weather conditions on plume behaviour | | | |
| Horizontal dispersion | * | | Vertical |
| dispersion: (a) * | | | |
| (b) * | | | |
| 12. Remarks | * | | |

SPECIALIST FORECAST INFORMATION

- | | | | | |
|--|----------------|------------------|-------|--------------|
| 13. Total Cloud Amount | <u>*oktas</u> | | | |
| Height of lowest significant cloud | <u>*feet</u> | | | |
| 14. Air Temperature | <u>*°C</u> | | | |
| Relative Humidity | <u>*%</u> | | | |
| 15. Precipitation (type and intensity) | <u>*</u> | | | |
| 16. Depth of mixing layer | <u>*metres</u> | | | |
| 17. Mean wind in mixing layer: | | | | |
| Direction | from | <u>* degrees</u> | Speed | <u>*km/h</u> |

18. Air stability (A = Unstable, G = Stable) *

19. Issued by Jersey Met at hrs on

Schedule C – Public Information Message

The following information will form the basis of an Emergency Message Broadcast for the La Collette area:

‘We have been asked to let you know that there has been an incident at La Collette. The situation is being dealt with by the Emergency Services. People living in the vicinity of the complex should take the following precautions’

- **Go Indoors**
- **Stay Indoors**
- **Tune into local radio stations and wait for further information**
- Ensure doors and windows are closed, and ventilation systems are shut off
- Close curtains and move into a room facing away from the site
- Switch off all gas appliances
- Do not light matches or any other naked flames and do not smoke
- Do not go outside, you are safer remaining indoors
- All traffic is being stopped from entering the area
- Children in schools are the responsibility of Education, Sport & Culture Dept. until they can be collected by their parents.
- (If open) Parents with children at Petit Ecole Nursery at Fort Regent should not return to collect their children until informed it is safe to do so.
- Stay tuned to local radio and television that will bring you up to the minute information and advice when it is received from the scene
- Do **not** phone the Emergency Services for advice; please keep lines clear unless you have a separate home emergency, or are being seriously affected by the incident in which case the normal Emergency Services will respond

Schedule D – La Collette Emergency Evacuation Leaflet



La Collette Industrial Area – Emergency Evacuation Advice

For businesses and visitors to the site

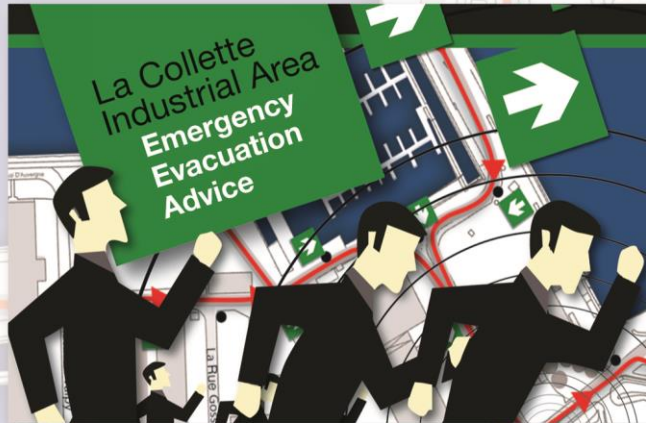
In the unlikely event of a major incident occurring at La Collette the Emergency Services and major Site Operators have tried and tested plans on responding to, containing and managing the situation.

The long-standing emergency evacuation procedure 'Harbour Flame Alert' will remain the primary warning mechanism for anyone who is on or near the site if an emergency requires evacuation of the area.

The emergency evacuation signal is sounded 'Continuously'.



Pick up your Emergency Evacuation Advice card, and keep it in a safe place.



Action on the Sounding of the Harbour Flame Alert Emergency Siren

- Stop what you are doing and switch off operating equipment and extinguish sources of ignition before leaving buildings.
- Leave your workplace immediately, follow the evacuation signs and proceed away from the immediate area.



- Evacuees must leave the area on **FOOT** and go to the **Piazza inside Fort Regent**
- Managers should ensure that their premises are empty before leaving and account for their own personnel leaving the area or evacuating to the **Piazza inside Fort Regent**
- **Vehicles should not be used to evacuate the site**
- If necessary Jersey Coastguard will activate maritime resources to assist with an emergency evacuation via the sea

Please note the siren will be tested on the first Monday of each month at 10am.



Action by Fort Regent

In anticipation of the arrival of people evacuated from the La Collette Industrial Area the Duty Manager at Fort Regent will make arrangements to open the premises if out of hours to receive evacuees.

Warning for the General Public outside the immediate vicinity

In most scenarios involving the release of a hazardous chemical, initial advice to the public will be to shelter-in-place **'Go In, Stay in and Tune In'** to minimize the risk of exposure.

The Emergency Services will consider contacting vulnerable populations to alert them to the developing hazards, and what action they should take. This decision will be reviewed on a regular basis and in light of emerging information.

The following information will form the basis of an Emergency Message Broadcast for the La Collette area:

“ We have been asked to let you know that there has been an incident at La Collette. The situation is being dealt with by the Emergency Services. People living in the vicinity of the complex should take the following precautions. ”

- **Go Indoors**
- **Stay Indoors**
- **Tune into local radio stations and wait for further information**
- Ensure doors and windows are closed, and ventilation systems are shut off
- Passers-by may be at risk, you may consider inviting them indoors
- Close curtains and move into a room facing away from the site
- Do not light matches or any other naked flames and do not smoke
- Do not go outside, you are safer remaining indoors
- Do not attempt to use a vehicle as all traffic is being stopped from entering or leaving the area
- Until children can be safely collected by their parents, they will remain the responsibility of the Education, Sport & Culture Department. Do not therefore attempt to collect your child until advised it is safe to do so
- Stay tuned to local radio and television that will bring you up to the minute information and advice when it is received from the scene
- Do **not** phone the Emergency Services for advice; please keep lines clear unless you have a separate home emergency, or are being seriously affected by the incident in which case the normal Emergency Services will respond

All Clear Signal

The local media will be asked by the States of Jersey Police to broadcast public reassurance messages and the appropriate all clear messages when it is safe to do so.

La Collette Evacuation Route

ACTION ON THE SOUNDING OF THE LA COLLETTE EMERGENCY SIRENS
 When you hear the siren you may be in danger. Switch off any operating equipment, leave your workplace or the area immediately and if directed proceed on foot to the Piazza (inside Fort Regent, access through the Main Reception). Managers are to ensure their building is empty before leaving.



Evacuation Route Key

- Evacuation Route
- Evacuation Route
- Evacuation Route
- Evacuation Route
- Evacuation Route
- Evacuation Route
- Evacuation Route
- Evacuation Route
- Muster Point

States of Jersey



For urgent assistance (Police, Fire, Ambulance or Coastguard) always dial 999



Emergency information will be broadcast on:

- States of Jersey Police   www.jersey.police.uk
- States of Jersey   www.gov.je
- BBC Spotlight 'CI' www.bbc.co.uk/jersey
- Channel Television www.channelonline.tv
- BBC Radio Jersey on 1026 khz/292 meters or 88.8 FM www.bbc.co.uk/jersey
- Channel 103 on 103.7 FM www.channel103.com
- News and Information from the Island of Jersey www.thisisjersey.com

For further information visit:
States of Jersey Emergency Planning web pages at:
www.gov.je/emergencyplanning

Or contact:
The States of Jersey Emergency Planning Officer
Chief Minister's Department,
Cyril le Marquand House, PO Box 140, St. Helier, Jersey JE4 8QT

Tel: 01534 440621

Email: EmergencyPlanning@gov.je



PREPARING FOR EMERGENCIES

States
of Jersey