



# Coronation Park extension

WHAT WOULD YOU LIKE TO SEE?

## Ideas sheet for children and young people

Discussion pack for  
schools and families

# Where is this?

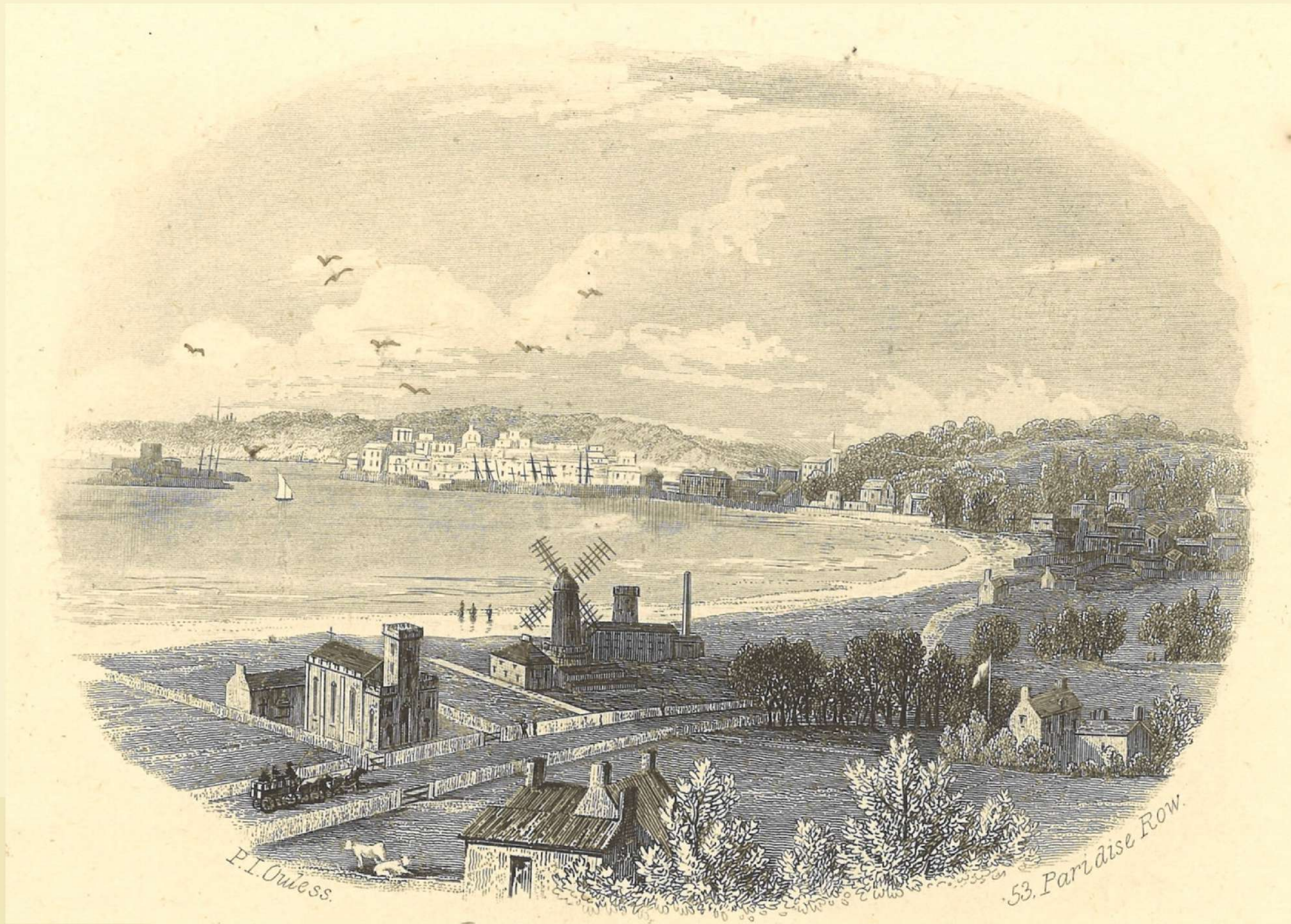


Image kindly provided  
by Société Jersiaise.  
Print by P.J.Oules  
1817-1885.

# Here's a clue....

Look at the area outlined in red. Do you know where this is?

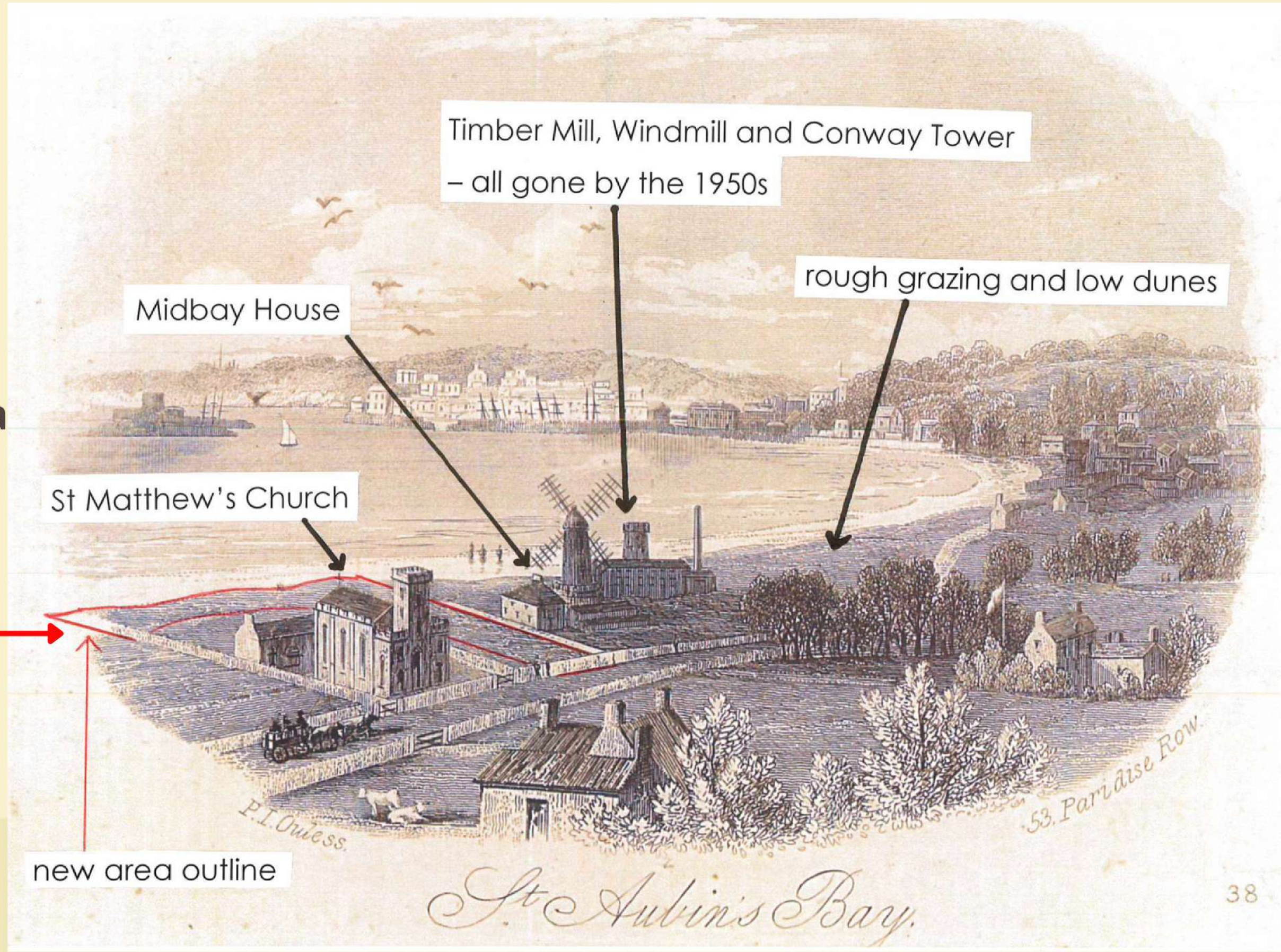


Image kindly provided by Société Jersiaise. Print by P.J.Oules 1817-1885.

# Do you know where it is now?

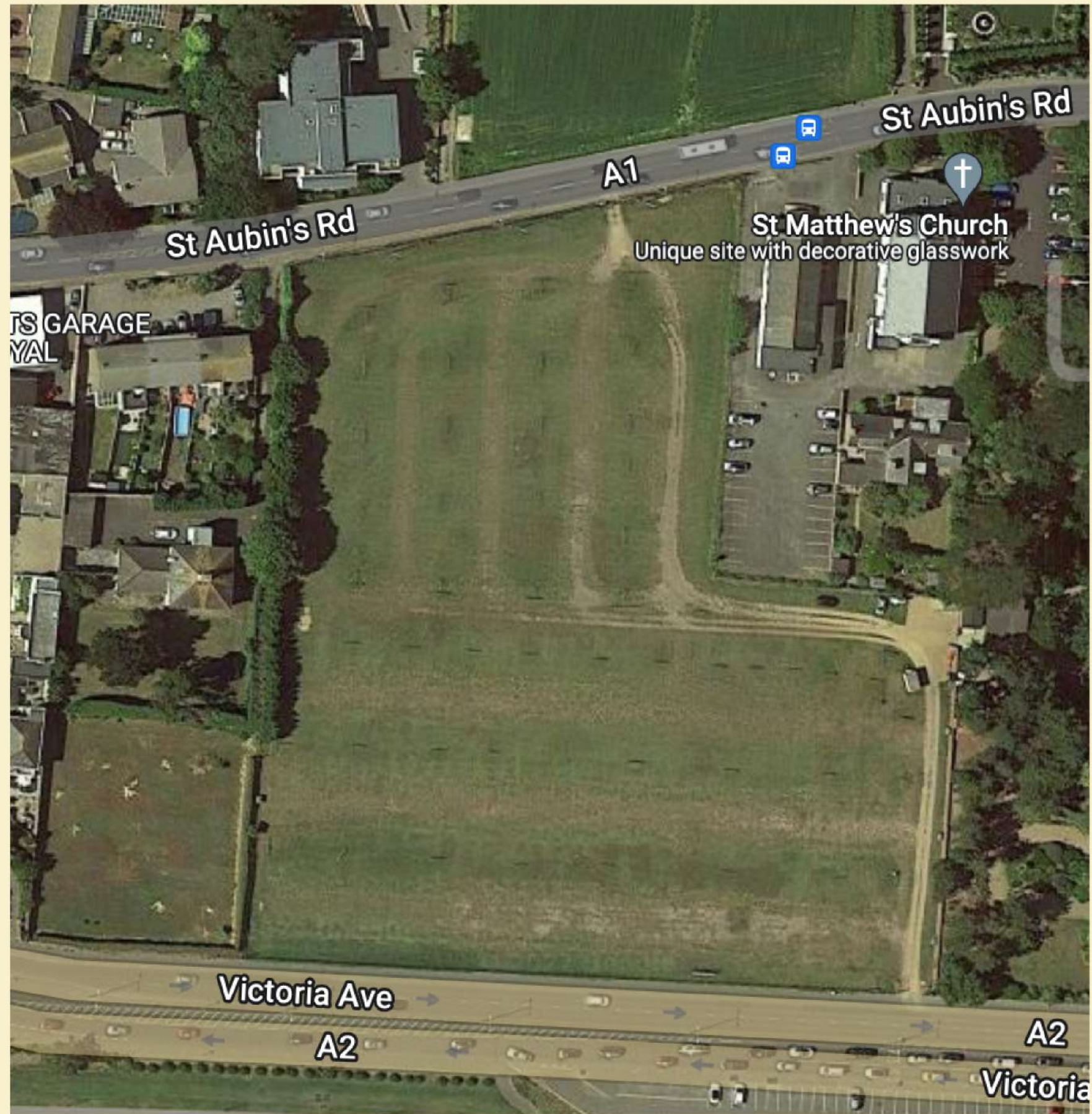
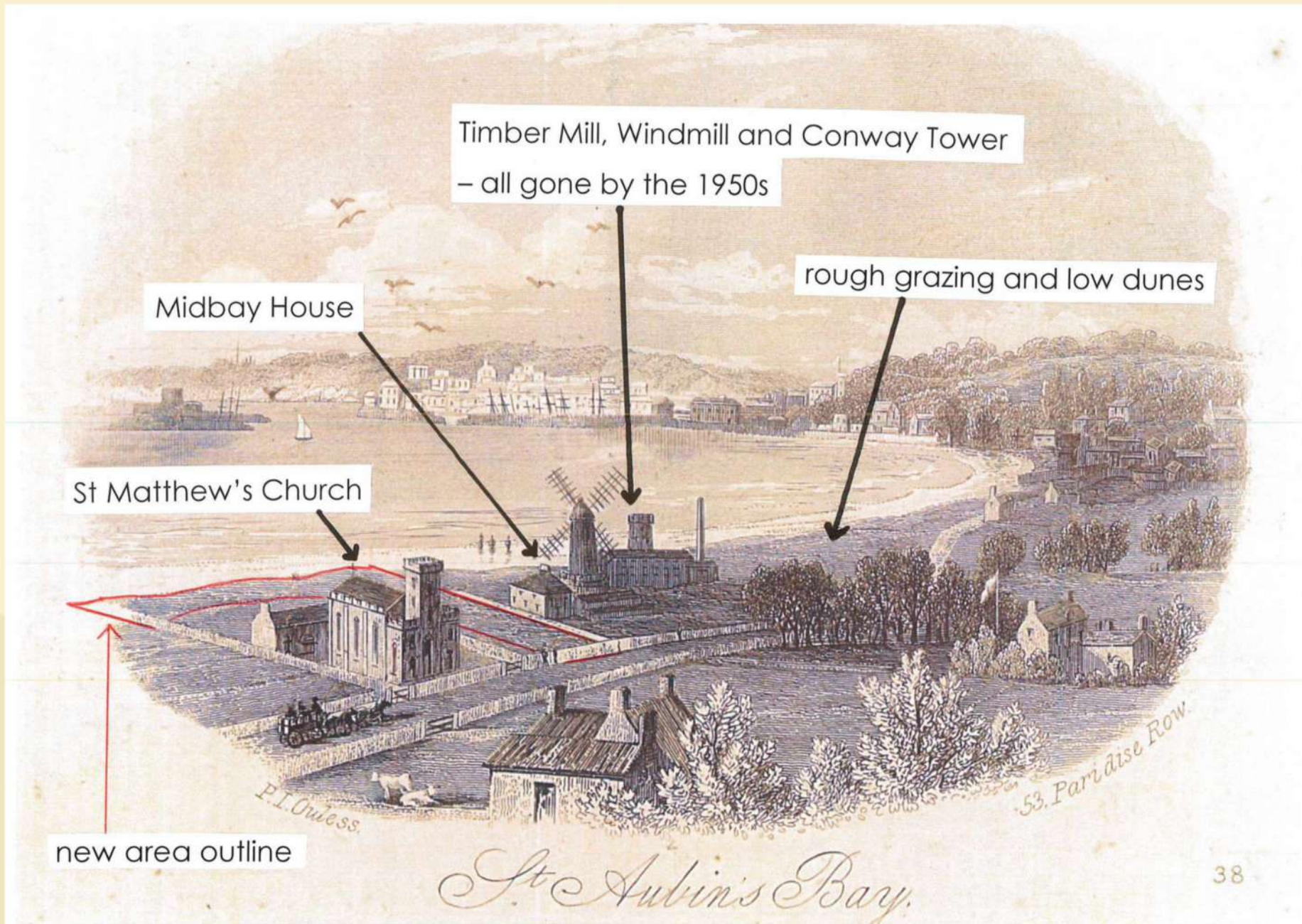


Image kindly provided by Google

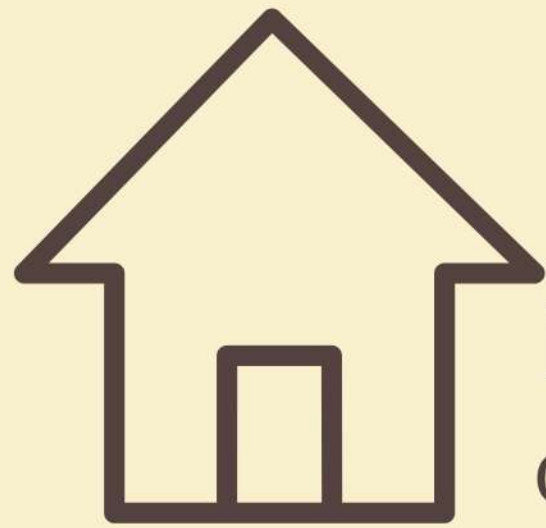
## The land was sand dunes and meadow



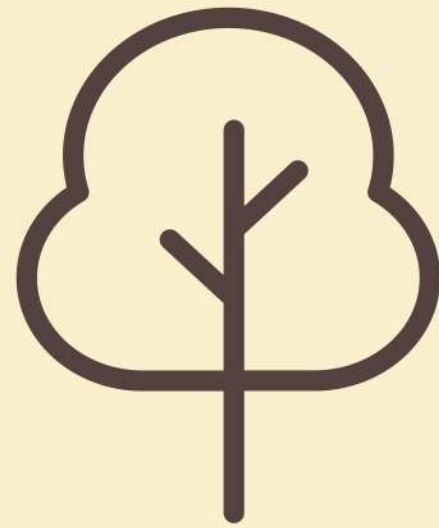
**A part of Millbrook Playing Fields will become a new part of Coronation Park.**

**What would you like to see there?**

# We are asking for your ideas...but there are some things we can't do\*



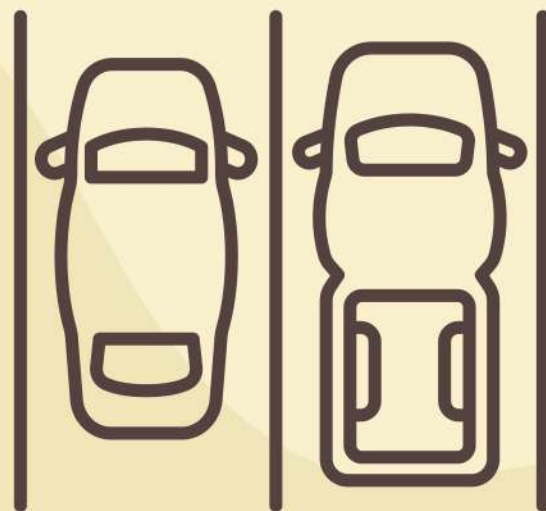
No buildings or structures



No tall trees



Nothing too bright, smelly, smoky or noisy



No parking



No sports



\*there is a covenant with a number of conditions on the use of the land

# Let's play outside

Help us design the new part of Coronation Park. In the space below, share your favourite things to do outside. You can draw or write down your ideas.

School age of child/young person:  Preschool  Primary  Secondary  College



## Notes for grown ups

Part of Millbrook playing fields will become part of Coronation Park. We would like to ask children and young people for their ideas so we can create somewhere they want to come again and again.

A covenant (a formal agreement that includes a number of conditions) to protect the views across the land restricts what we can do, so please don't include:

- A playground (swings, slides, etc.)
- A swimming pool
- A football pitch
- Any buildings
- Car parking

Please scan or photograph this sheet and send it to us by Monday 31 October 2022:

**Email:** [dfi@gov.je](mailto:dfi@gov.je)

**Post:** Coronation Park Ideas,  
PO Box 412, St Helier, JE4 8UY.

Grown ups, please use your email address. Your email details will not be saved or used to contact you. Please scan this sheet at 300dpi or email the largest image size.

More information, including a survey for grown ups and our privacy policy, is available at [gov.je/CoronationPark](http://gov.je/CoronationPark)

Please see our notes for grown ups for more instructions

To make this a place you want to come again and again, we would like your ideas.

Draw or write about your favourite things to do outside.

Remember to look back at the things that we can't do.

**You might want to think about what is already in Coronation Park and think of something different**

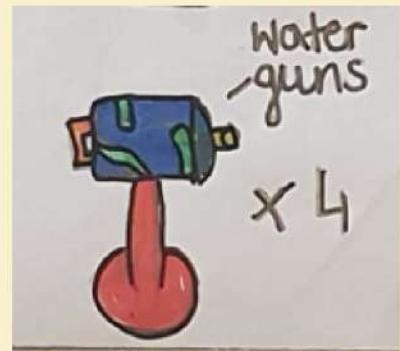




**Last year we asked you for your ideas to help us make the new Coronation Park Water Play area.**

**You shared over 200 ideas with us.**

**Will you help us again?**



**Ask your grown ups to send your ideas to us by Monday 31st October 2022.**

**The ideas sheet and a survey for grown ups can be found at [gov.je/CoronationPark](http://gov.je/CoronationPark)**



# Coronation Park extension

## WHAT WOULD YOU LIKE TO SEE?

A survey and ideas sheet for children and young people are available at [gov.je/CoronationPark](https://gov.je/CoronationPark)

# Thank you

Share your ideas with us by Monday 31st October 2022