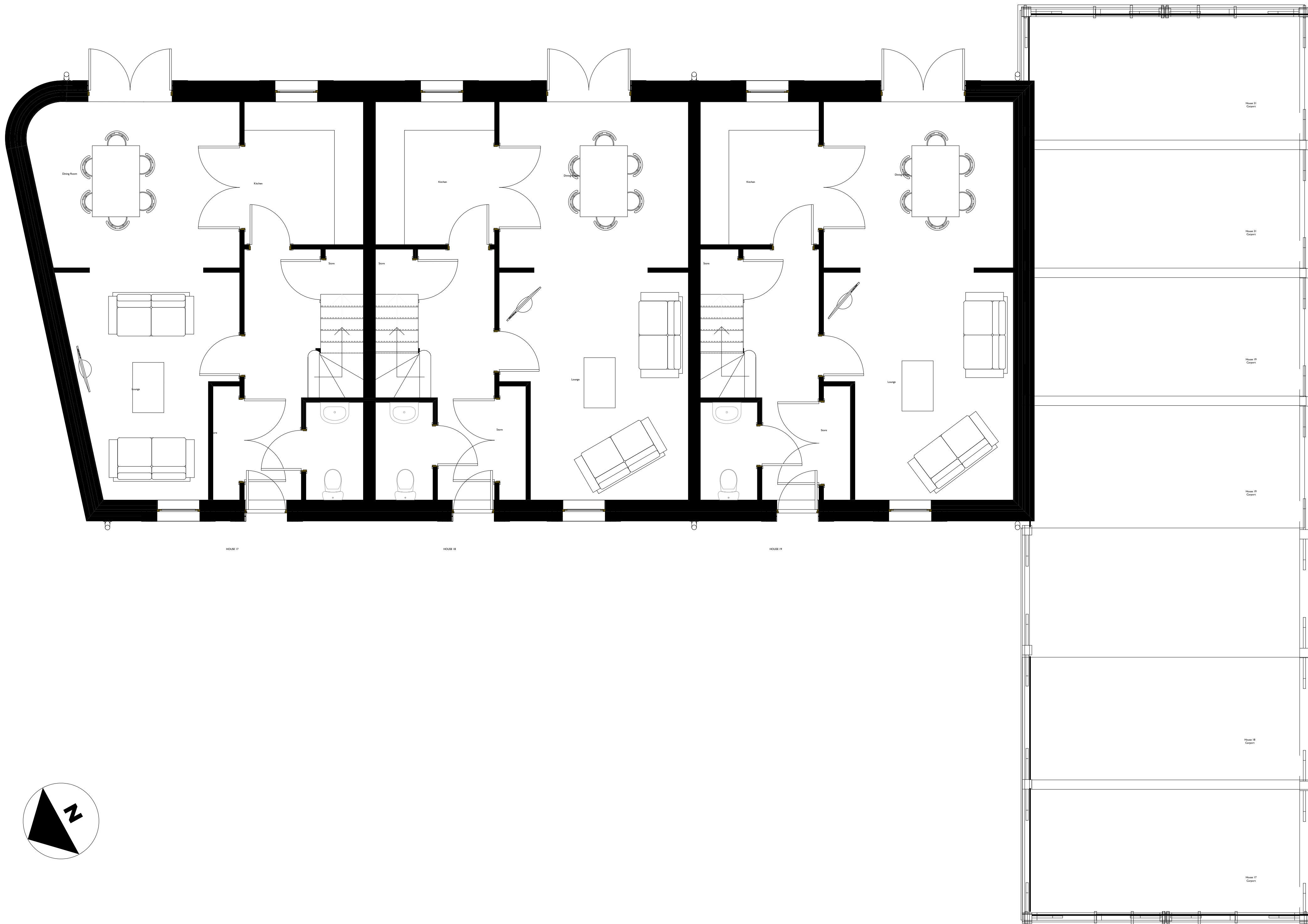



This architectural elevation drawing shows a two-story building with a traditional stone facade. The main structure features a dark grey slate roof with three prominent chimneys. The facade is composed of rough-hewn stone, with red brick used for window and door surrounds. There are six windows on the upper floor and four on the lower floor, all with white frames. Two green-painted doors are visible on the ground floor. To the right, a wooden extension with a gabled roof and exposed timber framing is attached to the main building. The entire drawing is set against a plain white background with a grey base line.

1:50



1:50

MATERIAL	IMAGE
TRADITIONAL BLUE/GREY SLATE (ROOF)	
TERRACOTTA (CHIMNEY POT)	
RANDOM LAID,TRADITIONAL JERSEY GRANITE (EXTERIOR WALLS)	
RED BRICK (QUOINS)	
TREATED TIMBER (CARPORTS)	
GLAZING	
CUT & DRESSED JERSEY GRANITE (CILLS, UNTELS & VERGES)	
CAST IRON (GUTTERS & DOWNPIPES AND BALCONY BALUSTRADE)	
PAINTED PRESERVATIVE TREATED SOFT WOOD - WHITE (FASCIAS & WINDOWS)	
PAINTED PRESERVATIVE TREATED SOFT WOOD - 'DARK OLIVE' (ENTRANCE DOORS)	
PAINTED CEMENT (JULIET BALCONY CILLS)	

B D K Architects
White Lodge,
Wellington Road,
St. Saviour,
JERSEY
Channel Islands
JE2 7TE

Tel: +44 1534 768740
Fax: +44 1534 739115
E: Enquiry@BDKArchitects.com



PROJECT / LOCATION		DRAWING	
PLEMONT BAY HOLIDAY VILLAGE PLEMONT '28 HOUSES DEVELOPMENT		HOUSES 17,18 &19 GROUND FLOOR PLAN	
CLIENT		DRAWN	CHECKED
PLEMONT ESTATES LTD		PAP	PH
DATE	SCALE	DRAWING NUMBER	
JUNE 2010	1:50 @ A0	1871/K/01	D