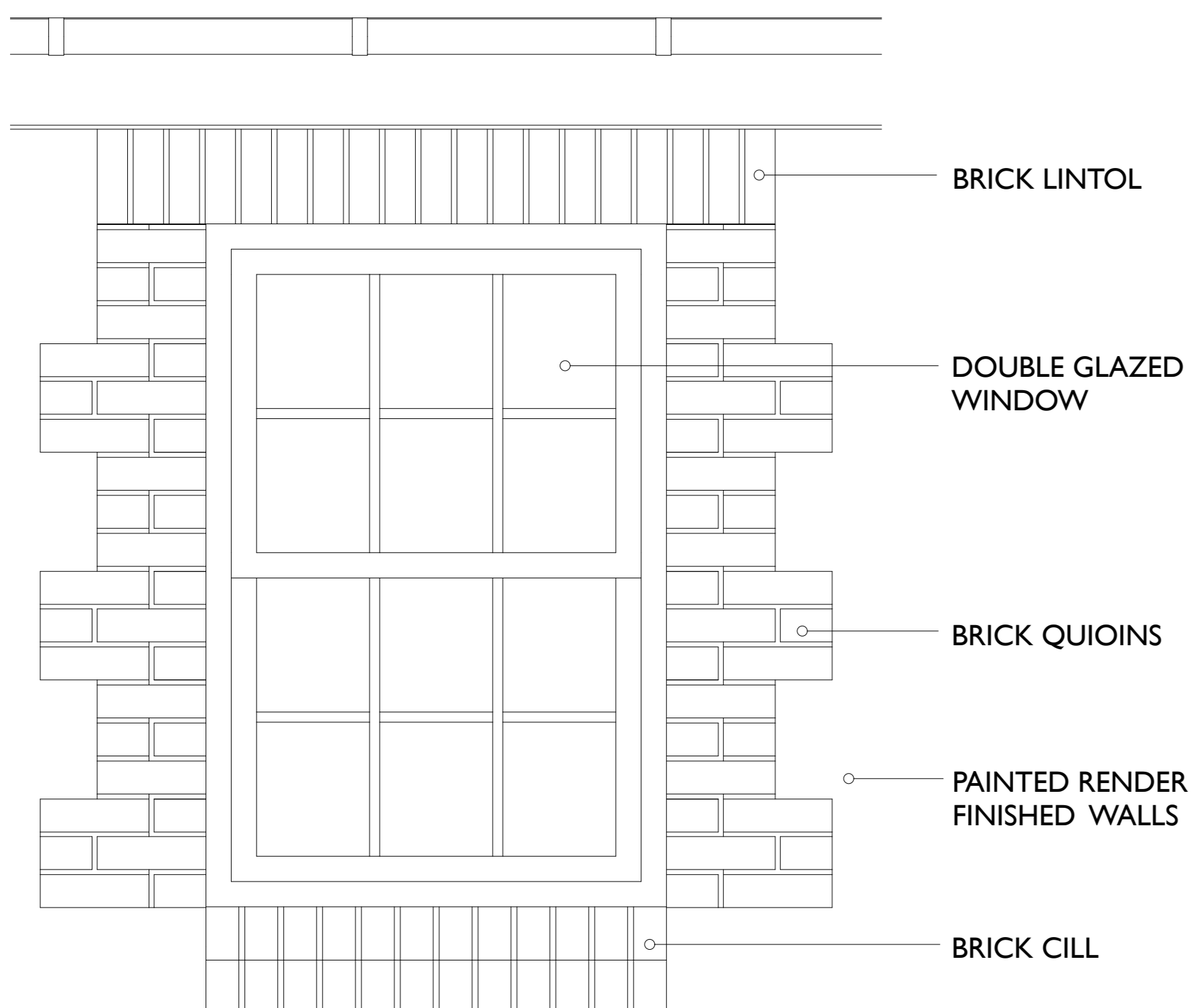
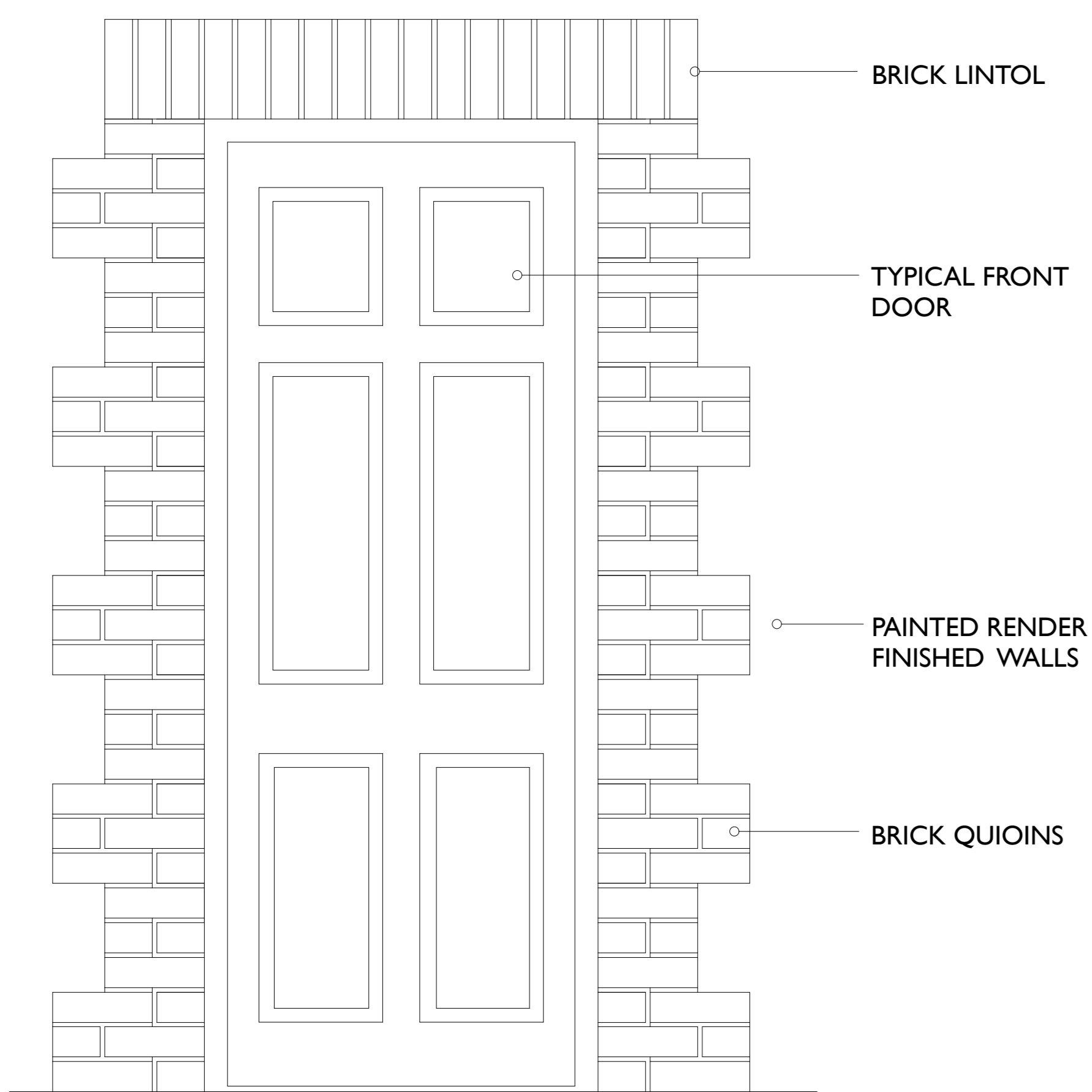


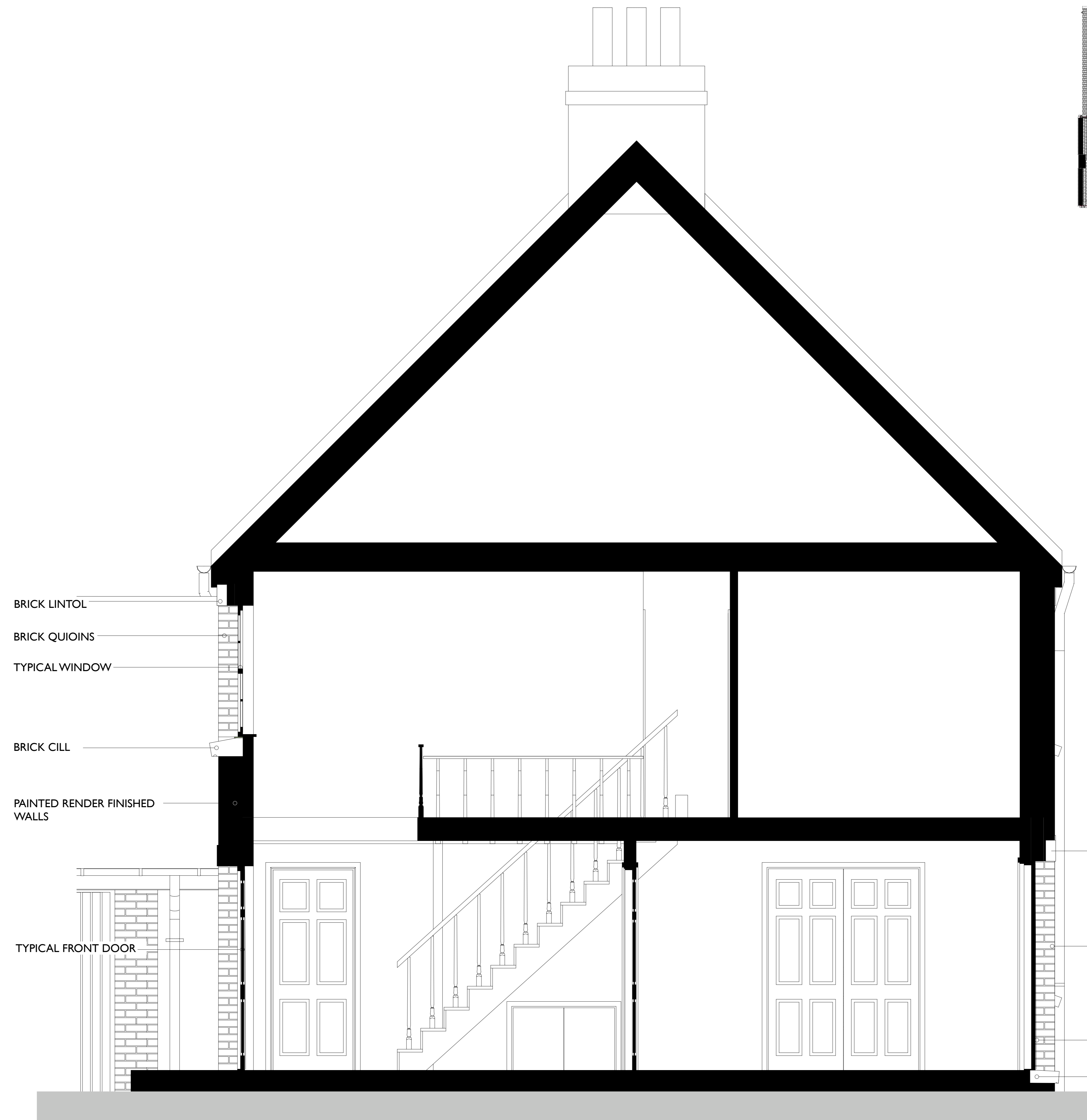
TYPICAL FRONT DOOR AND WINDOW WITH BRICK QUIONS IN PAINTED RENDER FINISHED WALLS. BRICK PIERS TO GARAGES SEE DWG 1871/P/02.



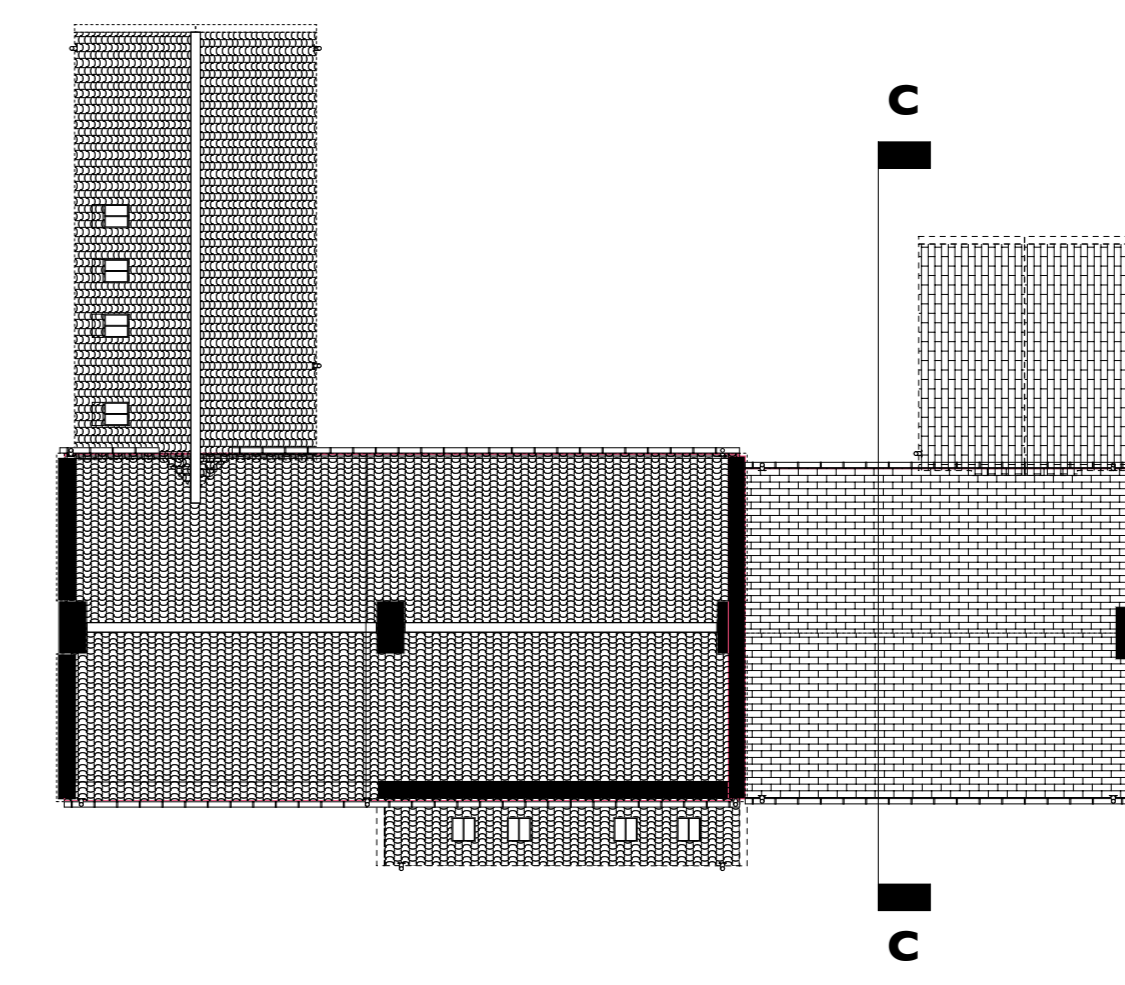
TYPICAL WINDOW
1:10



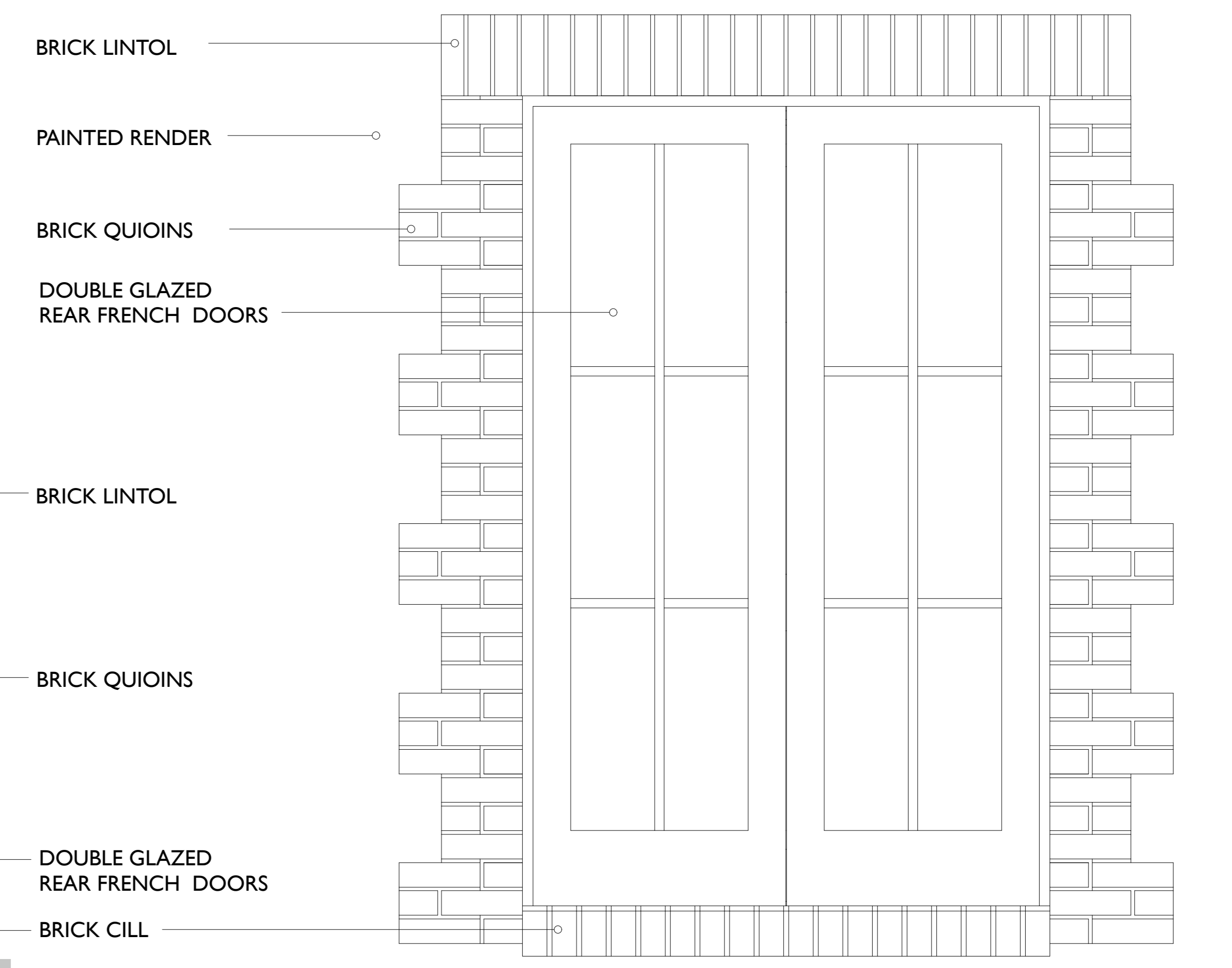
FRONT DOOR TO HOUSE 7
1:10



SECTION C-C (HOUSE 7)
1:20



SECTION C-C HOUSE 7



TYPICAL REAR DOORS WITH BRICK QUIONS & LINTLOL
1:10

MATERIAL	IMAGE
RENDER - 'HONEY BEIGE' (EXTERIOR WALLS)	
RED BRICKWORK (QUIONS & OPENING DRESSINGS)	
PAINTED PRESERVATIVE TREATED SOFT WOOD - WHITE (FASCIAS & WINDOW FRAMES)	
PAINTED PRESERVATIVE TREATED SOFT WOOD - 'FATHOM BLUE' (ENTRANCE DOORS)	



TYPICAL FRENCH DOORS & WINDOWS TO GARDEN WITH BRICK QUIONS AND LINTOL IN PAINTED RENDER FINISHED WALLS. SEE DWG 1871/P/02. TYPICAL WINDOWS SEE 1871/P/01

THIS DRAWING AND ALL DESIGN AND DETAILS ARE THE COPYRIGHT OF CHANNEL ARCHITECTS LTD.
This drawing must be read in conjunction with all other drawings, details and specifications issued by the Architect, Structural Engineer and other Consultants or approved specialists. Discrepancies between any other drawings, details and/or specifications must be referred to the Architect for verification at least 7 days prior to commencement of the work. It is the Contractor's responsibility to ensure all work is carried out in accordance with all statutory requirements and to the approval of the Building Control Officer. All roof and structural timbers are to be vacuum preservative treated by approved methods before delivery to site. All roof decking or external plywood to be W.B.P. bonded external grade. All materials to comply with the latest British Standards Specification or have an Agrément Certificate. The Contractor is responsible for all setting out of the works. Use written dimensions only, do not scale off drawings. All dimensions and setting out must be checked on site.

REVISIONS

PLANNING APPLICATION

B D K Architects
White Lodge,
Wellington Road,
St. Saviour,
JERSEY
Channel Islands
JE2 7TE
Tel: +44 1534 768740
Fax: +44 1534 739115
E: Enquiry@BDKArchitects.com

PROJECT / LOCATION		DRAWING	
PLEMONT BAY HOLIDAY VILLAGE 28 HOUSE DEVELOPMENT		TYPICAL RENDER HOUSE SECTION & DETAILS (HOUSE 7)	
CLIENT	DRAWN	CHECKED	
PLEMONT ESTATES LTD	PM	PH	
DATE	SCALE	DRAWING NUMBER	
JULY 2010	1:20 & 1:10 @ A0	1871/P/06	