
Subject: Termination of pregnancy statistics 2019
Date of report: 16 September 2021

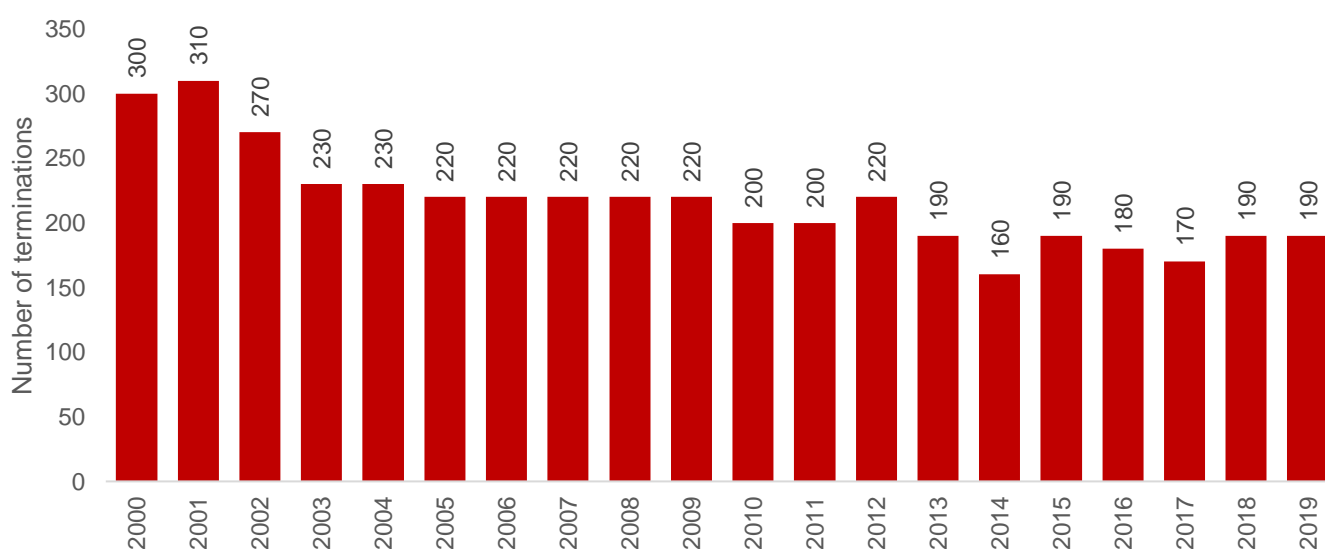
Background

Induced abortion (also referred to as ‘termination of pregnancy’ or T.O.P.) is carried out under the terms of the Termination of Pregnancy (Jersey) Law 1997. There is a legal requirement to notify the Medical Officer of Health of all terminations carried out in Jersey. Public Health Jersey collate and analyse the data derived from these notifications. A full data table is provided in the Appendix.

Overall number

- there were 190 abortions notified as having taken place in Jersey in 2019¹
- the number of abortions has decreased over the last two decades, with around 120 fewer terminations in 2019 (190) than reported in 2001 (310)
- around 10 abortions for Jersey residents were carried out in England and Wales in 2019², this number has remained at a similar level since 2008

Figure 1: Number of annual terminations in Jersey, 2000-2019



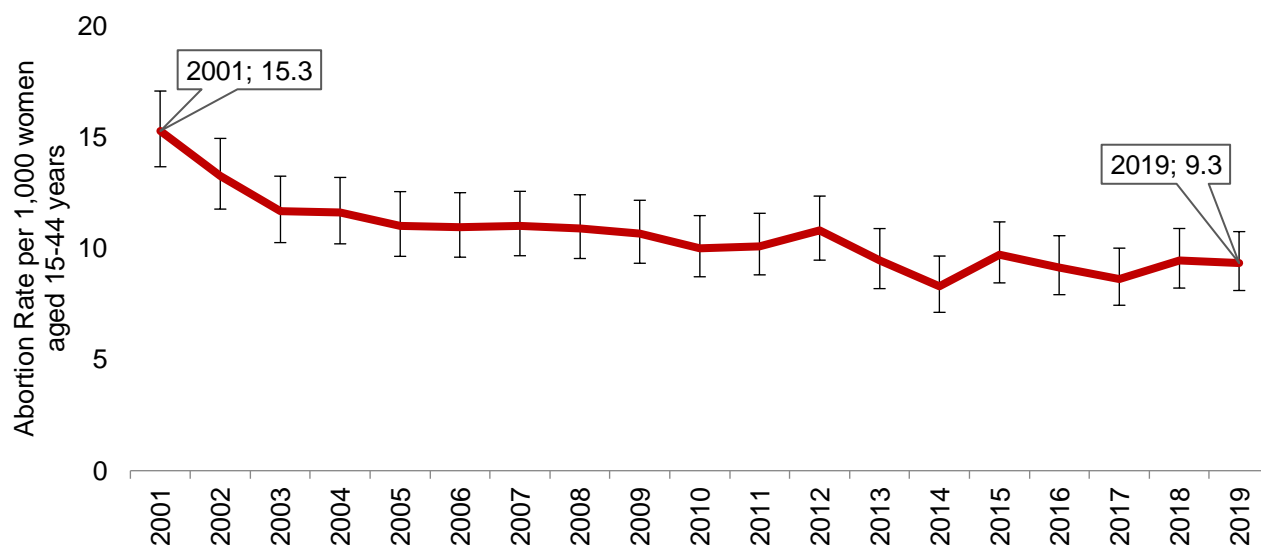
¹ The commentary, charts and tables relate to abortions carried out in Jersey for residents of Jersey only. Figures do not include abortions for residents of Jersey that are carried out in other parts of the United Kingdom or outside the UK

² Abortion Statistics 2019 (Table 12a) - [Abortion statistics for England and Wales: 2019 - GOV.UK \(www.gov.uk\)](https://www.gov.uk/government/statistics/abortion-statistics-2019)

Total abortion rate: abortions per 1,000 women aged 15-44 years

- the total abortion rate in 2019 was 9.3 per 1,000 women aged 15-44 years³; the rate has not changed significantly over the period 2005-2019 (see Figure 2)

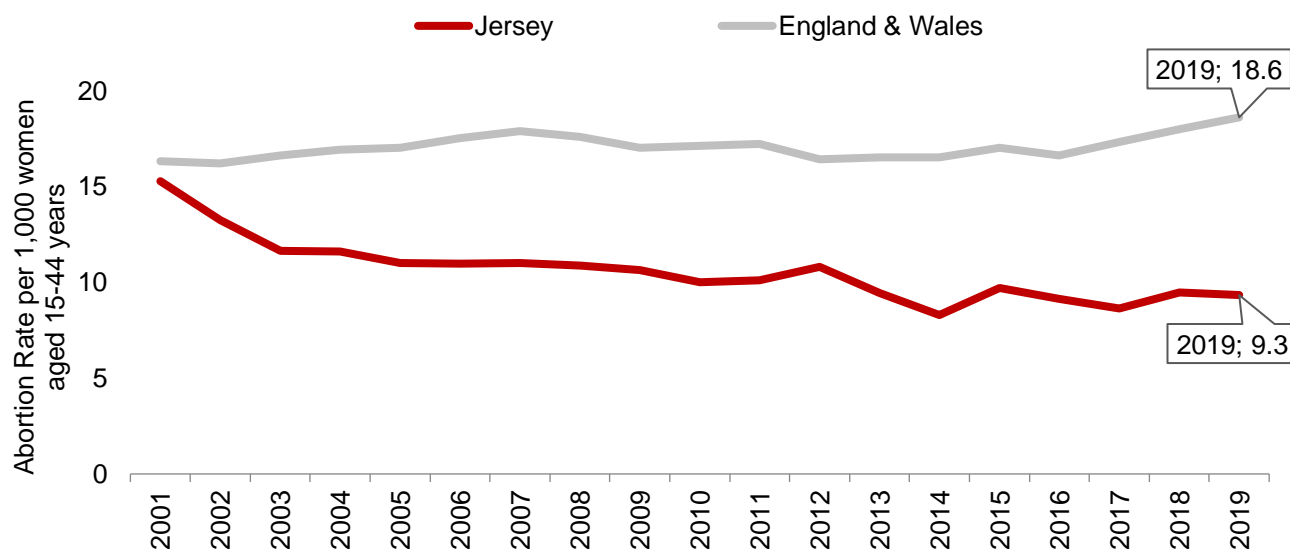
Figure 2: Abortion rate per 1,000 women aged 15-44 years, 2001 to 2019



*The confidence interval indicates the range that could be expected from 'random fluctuations'

- the total abortion rate in Jersey over the period 2002-2019 was consistently lower than in England and Wales⁴ (Figure 3)

Figure 3: Total abortion rate - Jersey compared to England & Wales, 2001-2019



³ Rates are calculated based on most recently available population estimates at the time of publication (see www.gov.je/statistics)

⁴ www.gov.uk National Statistics, Abortion Statistics for England and Wales: 2019 (Abortion Statistics : Data Tables)

See Table 1 for the number of abortions and rate in Jersey, and in England and Wales for 2015-2019.

Table 1: Number and rate (number per 1,000 women aged 15-44 years) of abortions in Jersey and in England and Wales

<i>Year</i>	<i>Jersey</i>		<i>England & Wales</i>	
	Number	Rate	Number	Rate
2015	190	9.7	191,010	17.0
2016	180	9.1	190,410	16.6
2017	170	8.6	197,530	17.3
2018	190	9.5	205,300	18.0
2019	190	9.3	209,520	18.6

Abortion ratio: abortions per 1,000 live births

- in 2019 the abortion ratio in Jersey was 213 abortions for every 1,000 live births; this has decreased by around a third (32%) when compared with 2001 (311 abortions per 1,000 live births)

Table 2 shows the comparative abortion ratios per 1,000 live births in Jersey, the EU and selected countries⁵ for 2017 and 2018 (the most recently available comparison data).

- Jersey had a lower ratio than Bulgaria, Sweden, Spain, Norway and Great Britain; and a higher ratio than the average for EU members, Finland, Italy, Germany, Switzerland and Slovakia

Table 2: Abortions per 1,000 live births, 2017-2018

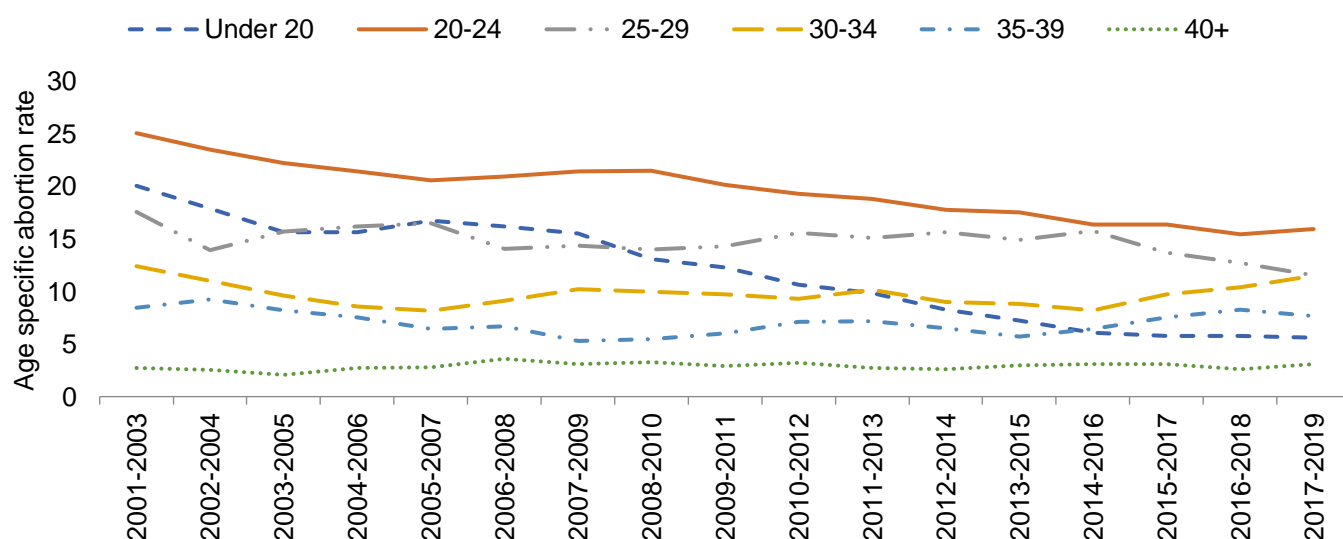
<i>Country</i>	<i>Abortions per 1,000 live births</i>
<i>Bulgaria</i>	380
<i>Sweden</i>	317
<i>Great Britain</i>	272
<i>Spain</i>	239
<i>Norway</i>	222
<i>Jersey</i>	199
<i>EU Members (average)</i>	183
<i>Finland</i>	181
<i>Italy</i>	177
<i>Germany</i>	129
<i>Switzerland</i>	115
<i>Slovakia</i>	105

⁵ World Health Organisation, European Health Information Gateway, Abortions per 1000 live births
Termination of Pregnancy Statistics

By age of woman (three-year periods)⁶

- the age group with the highest age-specific abortion rate in Jersey (2017-2019) was for women aged 20-24 (16.0 per 1,000 resident women); the rate for this age group has declined since 2001-2003 (25.1 per 1,000), see Figure 4
- the under 20 abortion rate was 5.6 per 1,000 women in 2017-2019; this has decreased from a rate of 20.1 per 1,000 in 2001-2003
- over the period 2012-2014 to 2017-2019 there has been an average of around 20 abortions per year where the mother has been under 20 years; the proportion of teenage mothers in Jersey was lower than in England and Wales over this period
- for other age groups, the age-specific rates of termination have remained relatively more constant across the two decades
- in 2017-2019, over two thirds (69%) of all women having abortions were aged between 20 and 34 years

Figure 4: Age-specific abortion rates, Jersey 2001-2019 (3-year averages)

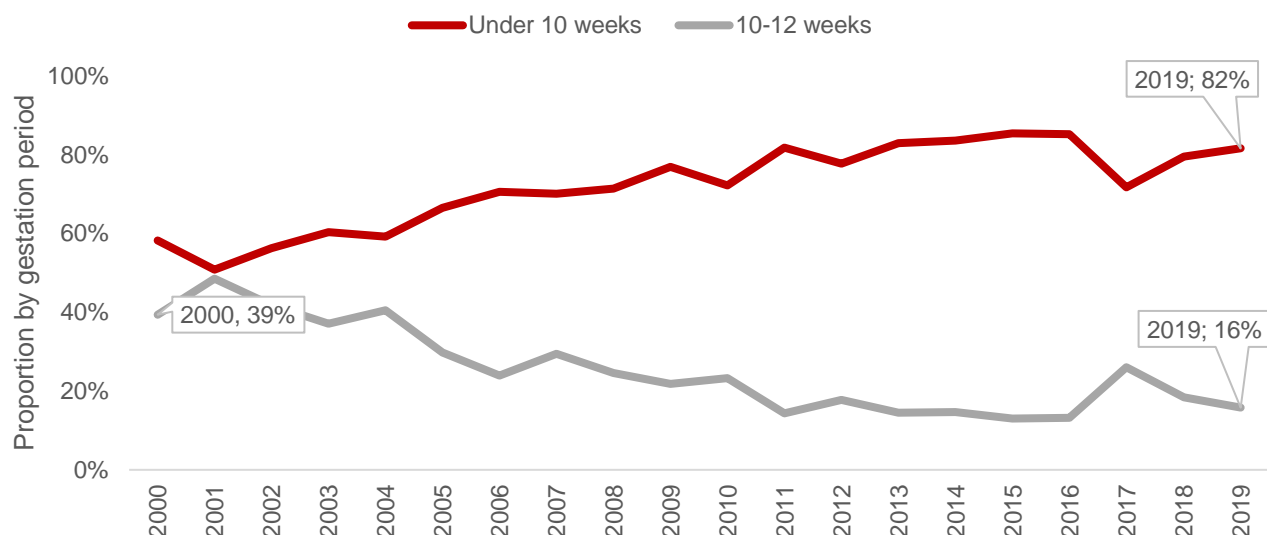


By gestation period

- 82% of terminations in 2019 were performed at less than 10 weeks gestation, the proportion was similar to previous years
- in 2019 the proportion of terminations performed in Jersey (82%) at less than 10 weeks was similar to England (82%)
- the proportion of terminations performed at 10-12 weeks was 16% in 2019
- the proportion of terminations being performed at 13 or more weeks gestation has been 5% or lower over the last decade

⁶ Due to small numbers, three years of data have been combined to calculate the age-specific rates

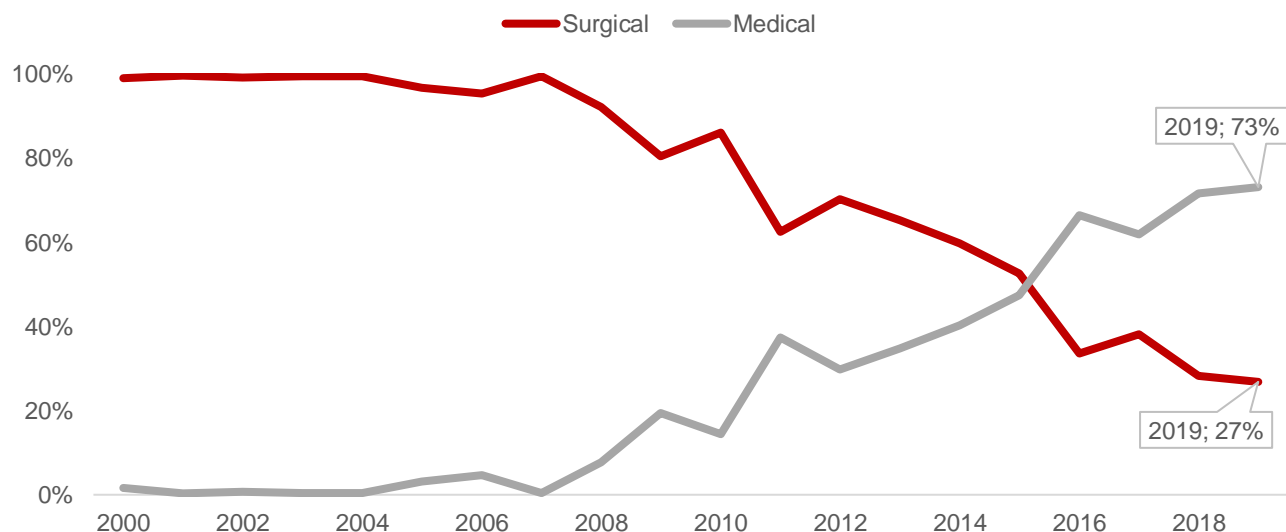
Figure 5: Proportion of abortions by gestation period⁷



By method of termination

- the use of medical methods has increased compared to surgical methods
- medical abortions became the most common method of termination in 2016, and in 2019 accounted for 73% of all terminations

Figure 6: Proportion of abortions by method of termination

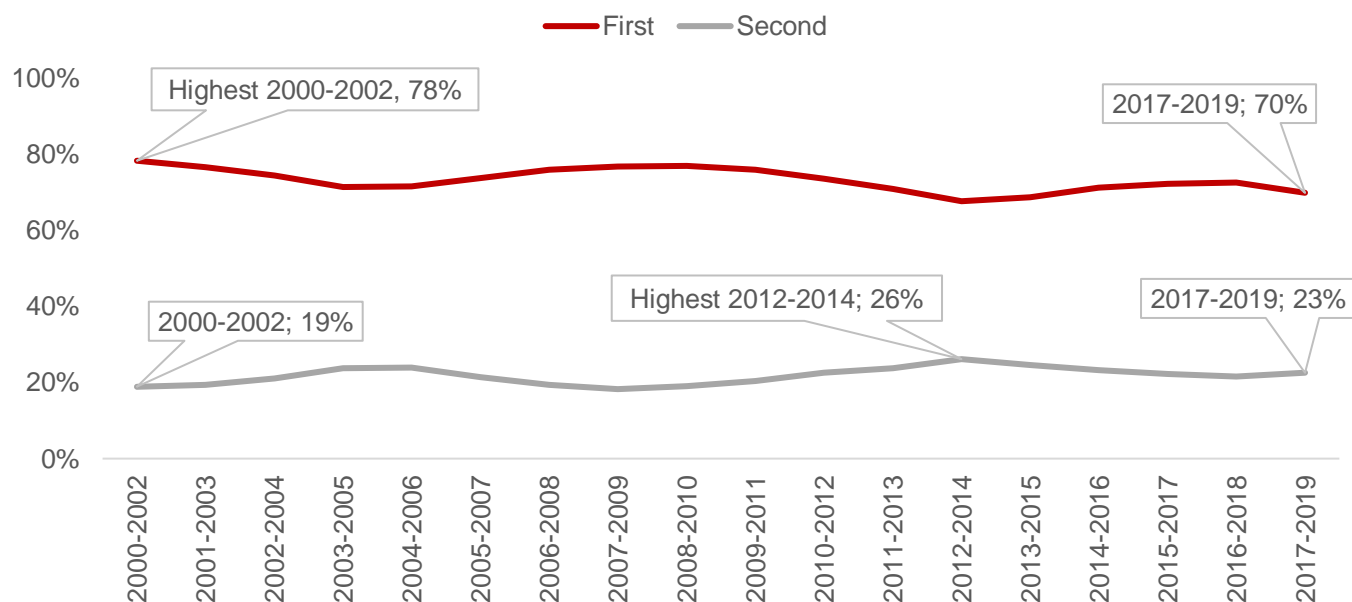


⁷ Proportion of terminations performed at over 12 weeks gestation not shown due to small numbers

By number of previous terminations

- in 2017-2019, for over three-quarters (70%) of women it was their first termination; for 23% it was their second termination; these were similar proportions compared to 2016-2018
- 19% of abortions to women under 25 were repeat abortions; this proportion has remained relatively constant since 2000-2001, and was lower than that in England (27%)

Figure 7: The proportion of women having a termination by number of previous terminations⁸



⁸ Proportion of terminations performed for those having two or more previous terminations not shown due to small numbers

Appendix: Table A1

Total number of terminations, abortion rate, distribution by gestation period, method and number of previous terminations, 2000-2019

Numbers less than 10 have been suppressed to prevent disclosure and shown by the symbol '+' below.

All other numbers have been rounded independently to the nearest 10

Year	Total number	Abortion rate	Number of terminations by gestation Period			Number of terminations by method		Number of terminations by previous terminations	
			<10 Weeks	10-12 Weeks	13 or more weeks	Surgical	Medical	No previous terminations	At least one previous termination
2000	300	n/a	170	120	+	290	+	240	60
2001	310	15.3	160	150	+	300	+	240	70
2002	270	13.3	150	110	+	260	+	210	60
2003	230	11.7	140	90	+	230	+	170	60
2004	230	11.6	140	90	+	230	+	160	70
2005	220	11.0	150	70	+	210	+	150	70
2006	220	11.0	150	50	10	210	10	160	60
2007	220	11.0	160	70	+	220	+	170	50
2008	220	10.9	160	50	+	200	20	170	50
2009	220	10.6	170	50	+	170	40	170	50
2010	200	10.0	150	50	+	170	30	160	50
2011	200	10.1	170	30	+	130	80	150	60
2012	220	10.8	170	40	10	150	60	150	60
2013	190	9.4	160	30	+	120	70	130	60
2014	160	8.3	140	20	+	100	70	100	60
2015	190	9.7	160	30	+	100	90	140	50
2016	180	9.1	160	20	+	60	120	140	40
2017	170	8.6	120	50	+	70	110	110	60
2018	190	9.5	150	40	+	50	140	140	50
2019	190	9.3	160	30	+	50	140	130	60

Appendix: Table A2

Age-specific rates of termination 2001-2019 (3-year averages)

Due to small numbers, three years of data have been combined to calculate the specific rates

3-YEAR PERIOD	UNDER 20 YRS	20-24 YRS	25-29 YRS	30-34 YRS	35-39 YRS	40-44 YRS
2001-03	20.1	25.1	17.6	12.4	8.5	2.8
2002-04	17.9	23.5	13.9	11.0	9.3	2.5
2003-05	15.7	22.2	15.7	9.6	8.2	2.1
2004-06	15.6	21.4	16.2	8.5	7.5	2.8
2005-07	16.8	20.6	16.5	8.2	6.4	2.8
2006-08	16.2	21.0	14.0	9.1	6.7	3.6
2007-09	15.5	21.4	14.3	10.2	5.3	3.1
2008-10	13.1	21.5	14.0	10.0	5.5	3.3
2009-11	12.3	20.2	14.3	9.7	6.0	2.9
2010-12	10.7	19.3	15.6	9.3	7.1	3.2
2011-13	9.9	18.8	15.1	10.1	7.2	2.7
2012-14	8.3	17.8	15.6	9.0	6.5	2.6
2013-15	7.2	17.5	14.9	8.8	5.7	3.0
2014-16	6.1	16.4	15.7	8.2	6.5	3.1
2015-17	5.8	16.4	13.7	9.7	7.5	3.1
2016-18	5.8	15.4	12.7	10.4	8.3	2.6
2017-19	5.6	16.0	11.5	11.5	7.7	3.1