

Jersey Labour Market at December 2009

Statistics Unit: www.gov.je/statistics

This report presents information on employment in Jersey at the end of December 2009, bringing together the results of the private sector¹ Manpower Survey and the public sector manpower figures compiled by the States of Jersey Treasury and Resources Department.

Headlines

The principal features of the Jersey Labour Market at December 2009 were²:

- **total employment was 53,700, some 140 higher than a year previously;**
- the **overall increase** in total employment in the twelve months to December 2009 was made up of a **net increase of 140 in the public sector** and essentially **no net change in the private sector;**
- in the private sector, compared with December 2008, the number of :
 - **locally qualified staff increased by 390,**
 - **j-category employees was up by 20,**
 - **non-locally qualified staff decreased by 420;**
- of total employment: **46,900 (87%) were in the private sector** (including the States Trading Committees) and **6,790 (13%) were in the public sector**²;
- **decreases** on an annual basis were seen in the **Finance** sector (-420), and in **Hotels, restaurants and bars** (-100); the decrease recorded by Finance was predominantly due to a reduction of full-time staff in the banking sub-sector;
- **increased employment** on an annual basis was seen in the **Wholesale and retail** sector (+320, comprising predominantly part-time staff in retail) and in the service sectors of **Miscellaneous business activities** (+130) and **Education, health and other services** (+130);
- employment in the **Construction** sector has remained at a similar level for the past 18 months, the highest level seen by the sector since at least the mid-1990s;
- **registered unemployment**³ stood at 1,120 in December 2009; more recently the number of people registered as unemployed increased to 1,320 in February 2010;
- the total number of **vacancies** in the private sector (2,010) was the lowest December figure recorded for at least ten years.
- there were 2,660 **single-person undertakings** recorded in December 2009, about 240 more than a year earlier.

¹ The Manpower Survey is analysed by the Statistics Unit on behalf of the Economic Development Department (Note 1).

² Throughout this report numbers are rounded independently to the nearest 10.

³ People registered with the Social Security Department as unemployed and actively seeking work.

Overview: Total Employment

Total employment in Jersey in December 2009, full-time and part-time, was 53,700 which is 140 (0.3%) more than in December 2008. The latest employment total is the highest December figure for at least twelve years

The private sector, including States Trading Committees (see Note 2) and single-person enterprises, employed 46,900 people; essentially the same figure as a year earlier. The public sector headcount was 6,790, a net increase of 140 on an annual basis.

Table 1: Employment (headcount) in the private and public sectors⁴.

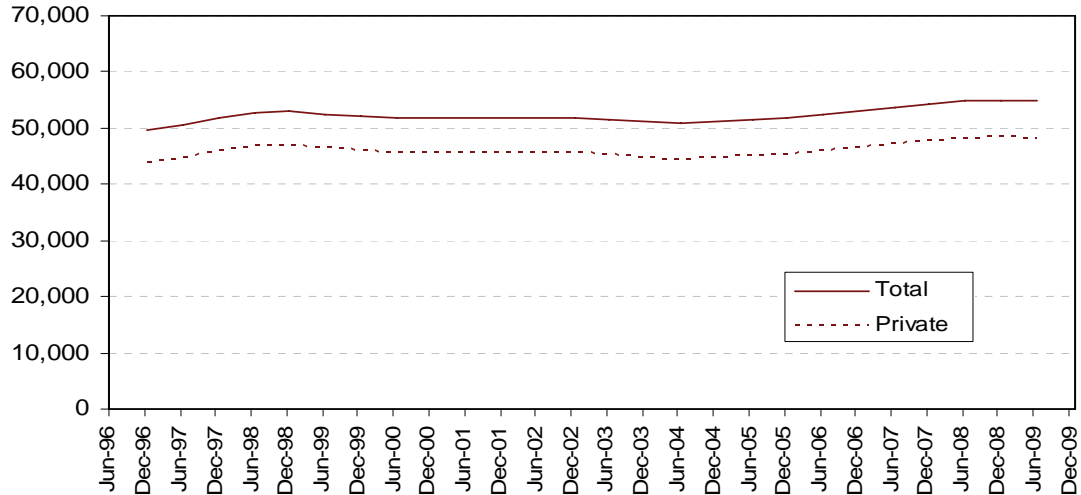
		<u>Private</u>	<u>Public</u>	<u>Total</u>
1997	Jun	47,010	5,970	52,970
	Dec	43,800	5,840	49,640
1998	Jun	49,480	5,970	55,450
	Dec	44,640	5,970	50,610
1999	Jun	48,770	6,170	54,940
	Dec	43,610	6,010	49,620
2000	Jun	47,760	6,110	53,870
	Dec	43,810	5,990	49,810
2001	Jun	47,560	6,200	53,760
	Dec	43,960	6,120	50,090
2002	Jun	47,390	6,250	53,640
	Dec	43,960	6,310	50,270
2003	Jun	46,790	6,440	53,230
	Dec	43,210	6,410	49,620
2004	Jun	45,830	6,590	52,420
	Dec	43,130	6,510	49,640
2005	Jun	46,760	6,530	53,280
	Dec	43,850	6,430	50,280
2006	Jun	47,380	6,540	53,910
	Dec	45,000	6,560	51,570
2007	Jun	48,380	6,730	55,110
	Dec	46,360	6,630	52,980
2008	Jun	49,880	6,730	56,610
	Dec	46,910	6,650	53,560
2009	Jun	49,440	6,750	56,200
	Dec	46,900	6,790	53,700

Numbers are rounded independently to the nearest 10.

⁴ The public sector headcount figure reported since December 2007 is based on the new States of Jersey reporting system (see Note 7).

Figure 1 shows total and private sector employment since 1996 (see Note 3). After rising rapidly to a peak of 55,000 in June 1998, total and private sector employment in Jersey was substantially constant between 1999 and December 2002, decreased during 2003 and 2004 and then saw an ongoing increase throughout the period from 2005 to 2008.

Figure 1 - Total and Private sector Headcount
(12-month moving average)

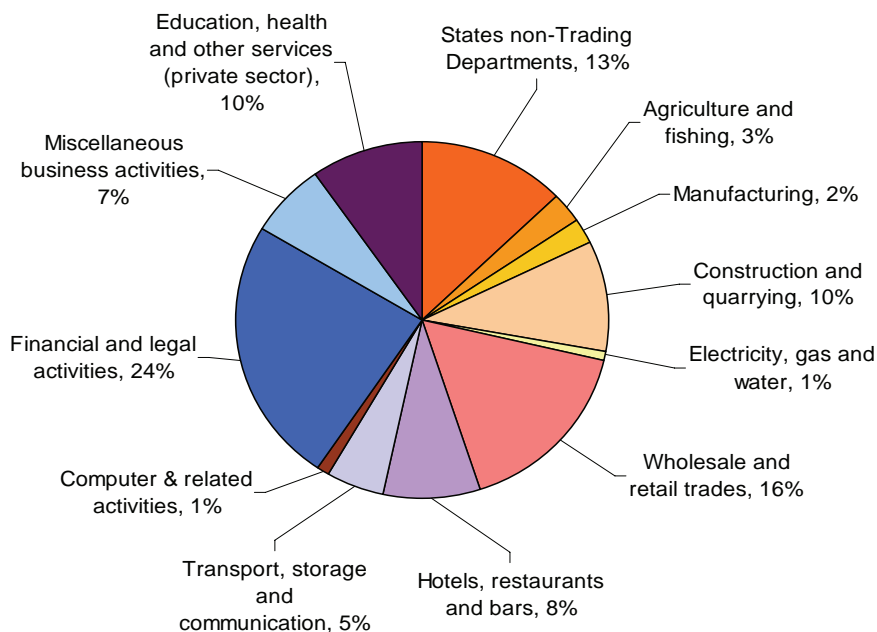


Sectoral Breakdown

Figure 2 shows the sectoral breakdown of employment at December 2009, with:

- almost a quarter (24%) of the total were engaged in the Finance sector (13,010);
- nearly a sixth (16%) were in Wholesale and retail trades (8,730);
- the public sector (excluding Trading Committees) accounted for around one in eight (13%) of Jersey’s labour force.

Figure 2- Jersey employment December 2009 headcount



Overview: Private sector

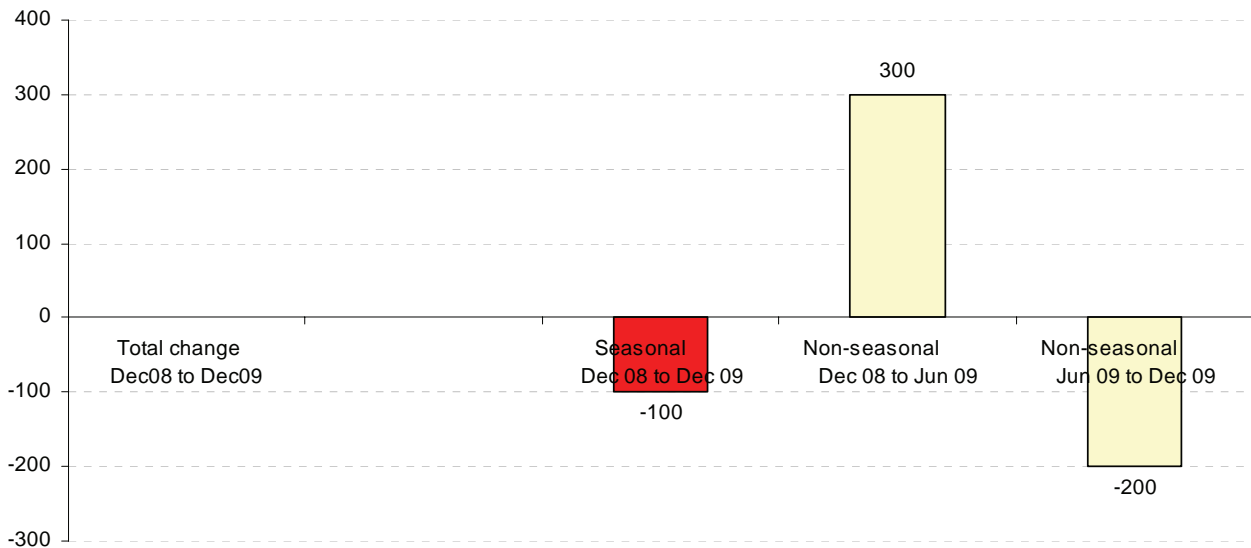
The number of people employed in Jersey businesses in December 2009 was 46,900, comprising 38,020 full-time and 8,890 part-time employees. The number of full-time staff decreased by 380 on an annual basis whilst the number of part-time staff increased by 380.

There were 6,070 active undertakings in Jersey in December 2009 of which 2,660 were one-person businesses.

Overall in December 2009 there was almost no net change in total private sector employment on an annual basis. This was the result of (see Figure 3):

- a decrease of 100 in the seasonal industries compared to the previous December;
- an increase of 300 jobs in the predominantly non-seasonal sectors over the period December 2008 to June 2009;
- an decrease of 200 in the predominantly non-seasonal sectors between June 2009 and December 2009;

Figure 3 – Net changes in seasonal and non-seasonal sectors, Dec 2008 to Dec 2009



The predominantly seasonal sectors saw an annual decrease of 100 staff, mainly due to reduced employment in Hotels, bars and restaurants.

The net increase in employment of 300 in the non-seasonal sectors during the first six months of 2009 was driven by increased employment in the service industries: private sector Education, health and other services up by 290 and Miscellaneous business activities up by 130. In contrast, the Finance sector saw a fall in employment of 170 during the first six months of 2009

The net decrease in employment of 200 in the non-seasonal sectors during the last six months of 2009 was driven by further reduced employment in the Finance sector, down by 250 over the period.

On an annual basis, the non seasonal sectors saw an increase of 100 on December 2008 driven by increases in part-time staff in the retail sub-sector of Wholesale and retail, which

saw employment in the sector overall return to levels similar to mid-2008. The Education, health and other services and Miscellaneous business activities sectors each saw annual increases of around +130. In contrast, the Finance sector saw a fall of 420 on an annual basis, driven by a reduction of 370 full-time staff.

Within the Wholesale and retail sector, a total of 850 staff were employed in fulfilment activities in December 2009, an increase of 90 on the previous December and up by 150 on June 2009, reflecting the seasonal nature of this sub-sector.

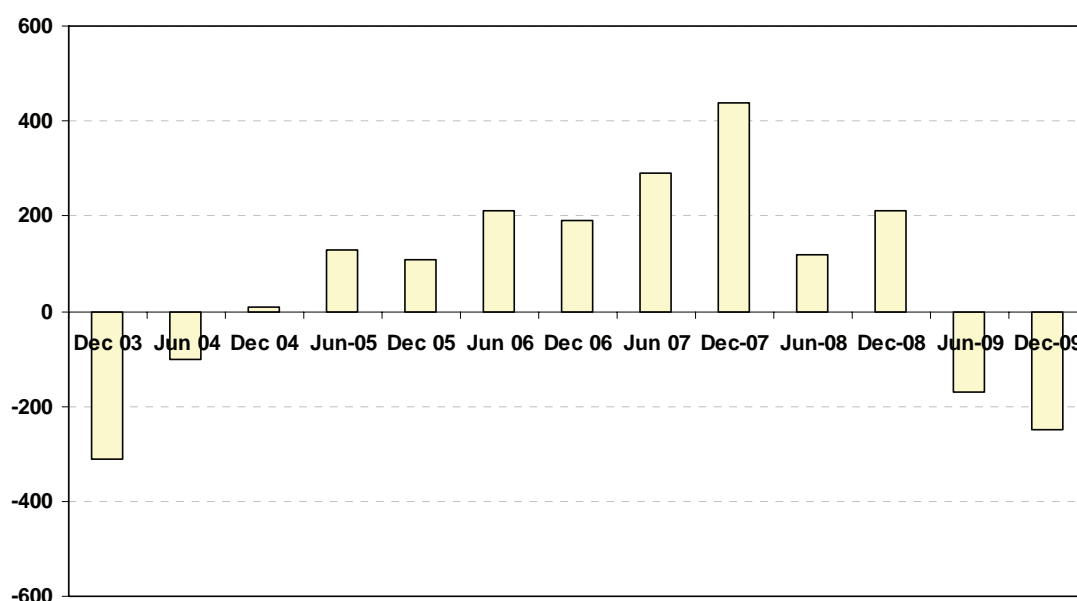
Employment in the Construction sector has remained at a similar level (above 5,200) for the past 18 months, the highest level seen by the sector since at least the mid-1990s.

In December 2009, total employment in the Finance sector stood at 13,010, a reduction of 420 compared with the peak recorded a year earlier. During the first six months of 2009, the Finance sector recorded a net decrease of 170 employees (Table 2), the first such decrease seen by this sector for five years (Figure 4). The last six months of 2009 saw a further fall of 250 staff which was driven by reduced employment in the banking sub-sector, down by 160 compared with June 2009. In contrast, the Accountancy sub-sector saw increased employment, up by 30 during the last six months of 2009.

Table 2: Employment in the Financial services sub-sectors: Dec 2004 to Dec 2009.

	Dec-04	Jun-05	Dec-05	Jun-06	Dec-06	Jun-07	Dec-07	Jun-08	Dec-08	Jun-09	Dec-09
Banking	5,570	5,570	5,460	5,390	5,810	5,840	6,100	6,060	6,050	5,900	5,740
Trust & Co Admin	2,430	2,470	2,560	2,830	2,520	2,670	2,790	2,850	2,880	2,960	2,880
Legal	2,050	2,150	2,250	2,300	2,320	2,390	2,500	2,560	2,580	2,500	2,490
Accountancy	780	790	810	780	800	830	870	880	980	940	970
Other	900	900	900	880	920	940	840	870	950	950	940
Total	11,730	11,860	11,970	12,180	12,370	12,660	13,100	13,220	13,430	13,260	13,010

Figure 4 –Six-month changes in Finance sector employment 2003-2009



Employment excluding one-person businesses⁵

Excluding one-person enterprises, there were a total of 3,420 active undertakings in Jersey in December 2009. Total employment in such undertakings was 44,250, a decrease of 240 from December 2008, mainly driven by reductions in the Finance and Hotels, restaurants and bars sectors.

On a shorter time-frame, between June 2009 and December 2009, employment decreased by 2,700. Shorter-term changes are heavily influenced by seasonal factors, as can be seen in Figure 5a. The underlying trend, excluding seasonal and other short-term variations, is shown by Figure 5b (see Note 3). The twelve-month percentage changes, Figure 6, show that total employment in December 2009 was 0.5% lower than the previous December.

Figure 5a - Employment in Jersey Undertakings

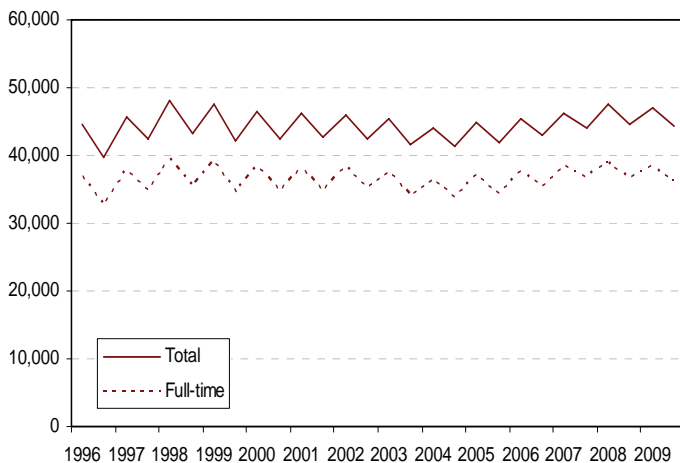


Figure 5b - Underlying trend in employment

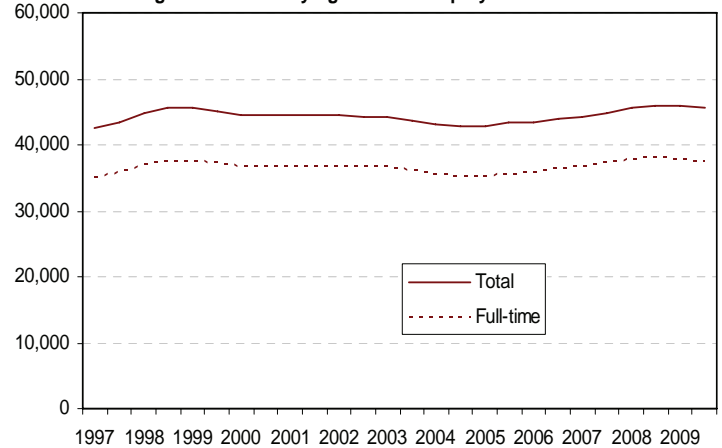
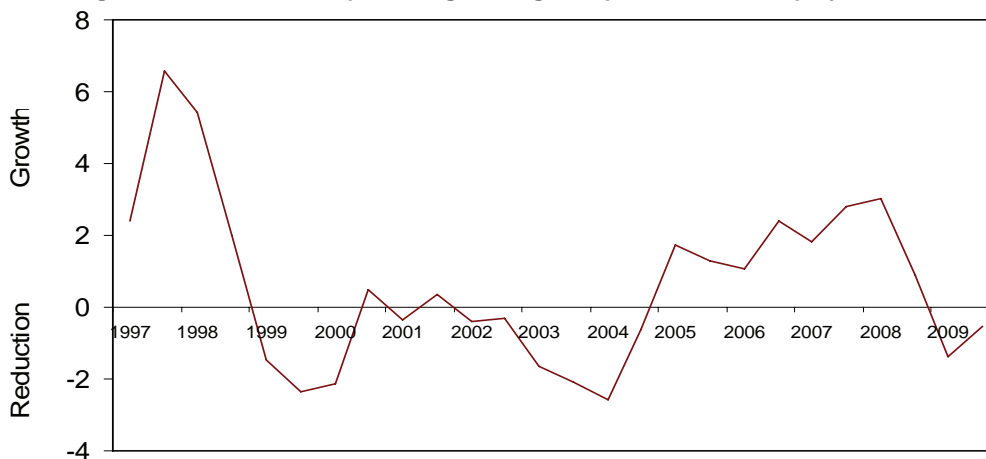


Figure 6 - Twelve month percentage changes in private sector employment



Employment in one-person businesses

In December 2009 there were 2,660 single-person undertakings recorded, about 240 more than a year earlier; this increase was driven by the service sectors of Education, health and other services and Miscellaneous business activities. Single-person undertakings were not consistently recorded prior to 2000; therefore detailed figures both including and excluding single-person undertakings are presented in Appendix.

⁵ These data are shown in order to obtain a longer term view of employment in Jersey since one-person undertakings were not consistently reported before 2000.

Residential qualifications

Overall, 84% of people employed in Jersey in December 2009 were locally qualified (as defined by the Regulation of Undertakings and Development Law, see Note 4), more than 3% were j-category and 12% were not locally qualified.

Of the 46,900 people employed in the private sector in December 2009, more than four-fifths (84%) were locally qualified and 2% (1,140 staff) were qualified as j-category. The remaining 14% (6,460), representing about one in seven of all private sector staff, were not locally qualified.

The number of locally qualified staff in the private sector in December 2009 was 390 more than in December 2008. Over the same period, the number of j-category employees in the private sector increased by 20. As Figure 7 shows, the total number of j-category employees in the private sector has more than doubled since the Manpower Survey first started recording the residential qualifications of employees in December 2001.

Figure 7- Private sector j-category employees

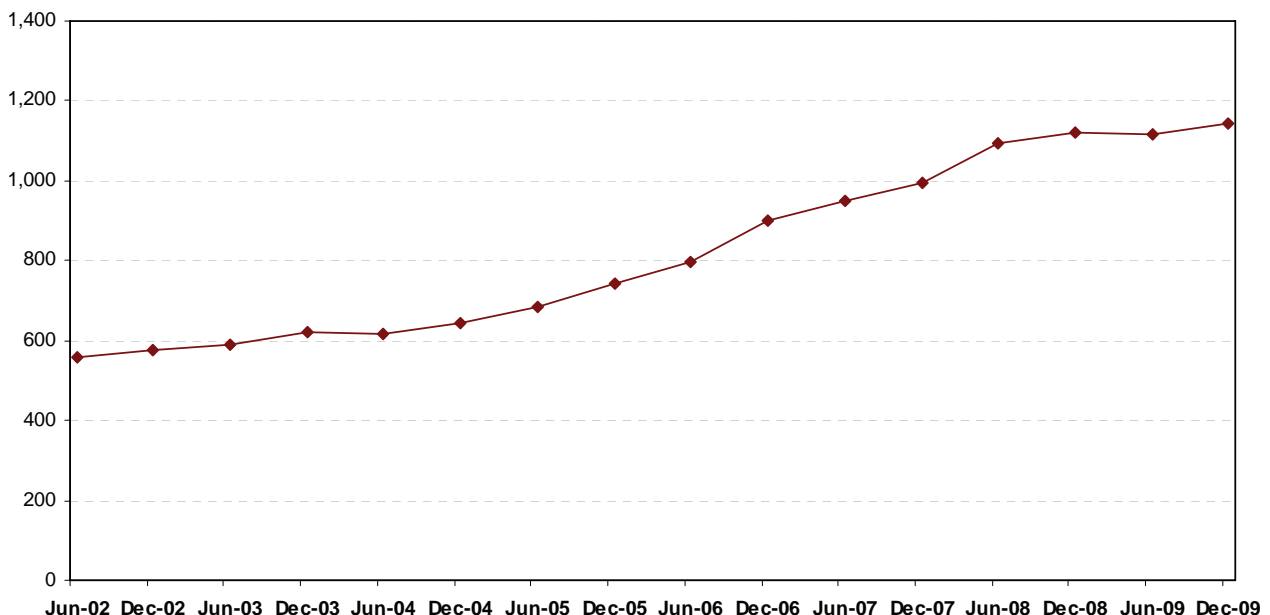
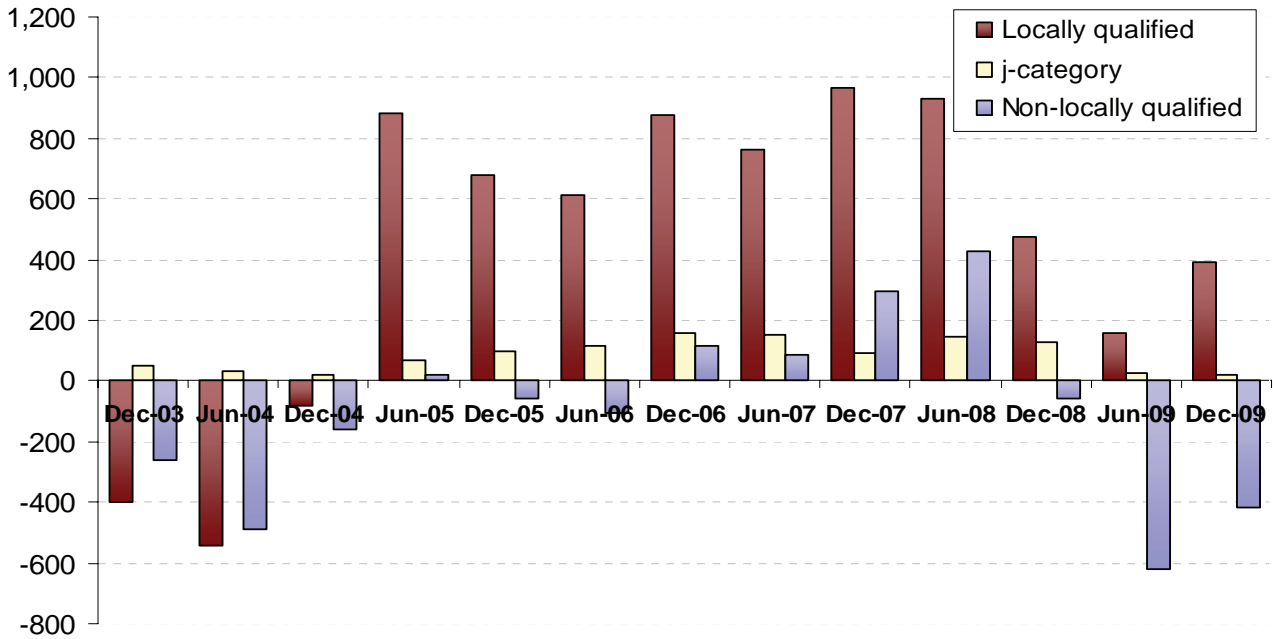


Figure 8 shows that the number of locally qualified staff employed in the private sector in Jersey has increased on an annual basis since mid-2005.

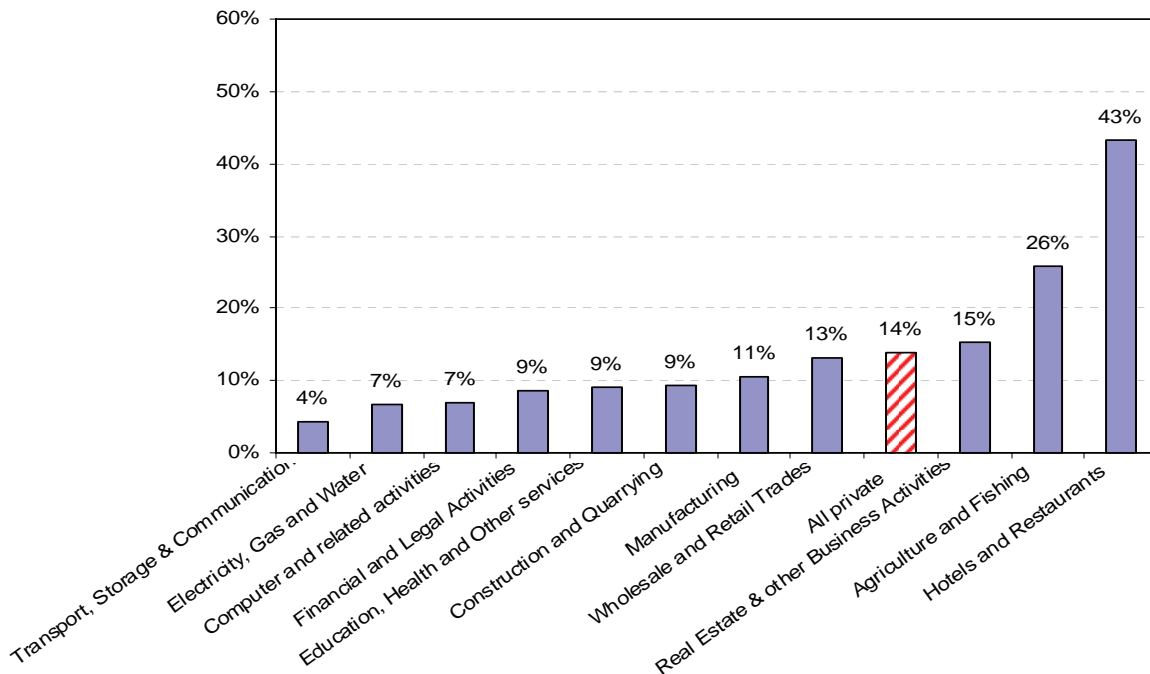
In contrast, the total number of non-qualified staff declined for several years up to mid-2006, before rising in both 2007 and 2008. Most recently, in June and December 2009, the number of non-qualified staff fell by 620 and 420, respectively, compared with the same months in 2008. In December 2009, the largest decreases of non-qualified staff, on an annual basis, were recorded by the Hotels, restaurants and bars (-150) and Finance (-120) sectors.

Figure 8 - Annual change in private sector employment by residential qualification



Within the private sector in December 2009, the highest proportion of non-qualified employees (i.e. excluding j-category) was in Hotel, restaurants & bars (43%) and Agriculture and fishing (26%). The Transport, storage and communication sector had the lowest proportion of non-qualified staff, at 4% (see Figure 9). About 9% of employees in the Finance and Construction sectors were non-qualified.

Figure 9 – Percentage of non-qualified employees by private sector, December 2009



The number of j-category staff in the public sector in December 2009 was 630, accounting for almost one in ten public sector employees, this number is down by 30 on that of December 2008.

Employment by nationality

Utilising data from the Social Security Department (SSD) it is possible to get an insight into the make up of Jersey's workforce by nationality⁶. However, in using these data it is important to understand some key points:

- the nationality data compiled by SSD is based on contributions paid on behalf of contributors (employees only, excluding the self-employed);
- the number of contributions from unique contributors will differ from the number employed primarily because the Social Security data refer to contributions paid *over the entire month*, whilst the employment data is a point in time estimate at either 30 June or 31 December each year. As a result of this timing difference it is not possible to undertake a direct comparison of social security contributions and numbers in employment⁷.
- nationality recorded by SSD is self-reported and historically has not been a key variable for social security purposes. As a result it is not currently possible to separate Jersey and United Kingdom nationals. These two groups are the largest two nationalities working in Jersey.

Bearing in mind these caveats, during December 2009:

- at least 70% of contributors in December 2009 were from Jersey/UK nationals;
- a total of 3,260 unique contributors (7% of the total) were paid from or on behalf of nationals from A8 countries⁸, more than 90% of whom were Polish;
- the number of unique contributors for/by Portuguese nationals was 12% of the total.

For the reasons given above, the actual numbers of people in work at a given point in time will be lower than the figures based on the number of unique contributors.

Unemployment

The number of people registered in Jersey as unemployed and actively seeking work (ASW) in December 2009 was 1,120. Figure 10 shows the total number of people registered as ASW at the end of each month in 2009, and also more recent figures for January and February 2010⁹. It is apparent from the plot that there has been an ongoing increase in total ASW since September 2009.

The most recent figures show that 1,320 people were registered as unemployed and actively seeking work in Jersey in February 2010.

In interpreting these unemployment figures, it should be emphasised that there is no legal requirement for all unemployed residents in Jersey to register as actively seeking work with the Social Security Department. Therefore, the number of people registered as unemployed should be regarded as an indicator rather than a measure of the actual level of unemployment in the Island.

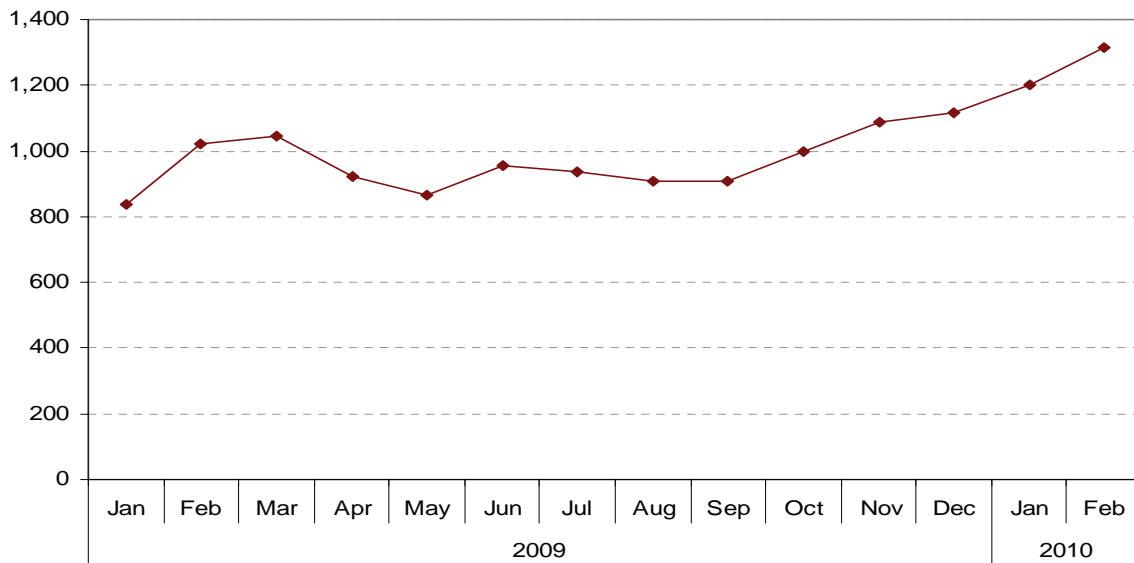
⁶ Under the Social Security (Jersey) Law 1974 one of the pieces of information held against everyone's unique registration number is their nationality.

⁷ Both sources count people with more than one job (with different undertakings) as multiples.

⁸ The eight countries which joined ("gained accession to") the European Union in May 2004 were: the Czech Republic, Estonia, Hungary, Latvia, Lithuania, Poland, Slovakia and Slovenia.

⁹ See Registered Unemployment – February 2010; States Of Jersey Statistics Unit, March 2010.

Figure 10 - Total number of individuals registered as ASW, January 2009– February 2010



International comparisons

In the UK, in the fourth quarter of 2009 there were 28.9 million people employed, 1.6 million people claiming Jobseeker’s Allowance (the Claimant Count). In Jersey there were 1,120 persons registered as unemployed in December 2009. People *registered* as unemployed were therefore about 2.1% of total employment in Jersey in December 2009, compared to about 5.5% in the UK¹⁰.

In Guernsey in December 2009 there were 32,170 people in employment (22% in Finance, a similar proportion to Jersey) and 420 people claiming unemployment or jobseeker benefits.

The internationally comparable measure of unemployment is the ILO unemployment rate (see Note 5); for the UK during the second, third and fourth quarters of 2009 the ILO rate was 7.8%, whilst that for Jersey in the early summer of 2009 (estimated from the Jersey Annual Social Survey, JASS) was 2.7%.

Vacancies

The total number of vacancies (full- and part-time) in the private sector in December 2009 (2,010) was the lowest December figure reported for at least a decade and was down by 130 on the previous December.

Statistics Unit
 31 March 2010

¹⁰ Figures for the UK are from the Office for National Statistics: Labour Market statistics.

Notes

1. The Manpower Survey is a census of some 6,070 undertakings in Jersey, which employ a total of some 46,900 staff (Dec 2009) including almost 9,000 part-time staff (who may have more than one job). Prior to December 2001, the Survey was conducted quarterly; from June 2002 the survey has taken place at six-monthly intervals.
2. The “private sector” includes States Trading Committees (former and current), the Jersey Financial Services Commission, the Family Nursing and Home Care Service and the Jersey Competition Regulatory Authority. These bodies, which are subject to the Regulation of Undertakings and Development Law, accounted for a total of 1,390 staff at December 2009.
3. For the six-monthly data of Figures 1 and 5b, short-term variations (largely due to seasonal factors) were removed by calculating a weighted three-point moving average; entries for June 1996 and December 2009, therefore, do not appear in these plots.
4. The definition of “locally qualified” as applied under the *Regulation of Undertakings and Development (Jersey) Law, 1973 as amended* includes all persons in the following categories:
 - i) residentially qualified persons falling within any of the Housing Regulations, excluding Regulation (l) and Regulation (m);
 - ii) persons resident for the whole of the past consecutive 5 years;
 - iii) the spouses of (i) or (ii) above;
 - iv) the children under 18 years (or if students under 25 years) of those in (i), (ii) or (iii) above.The analysis in this report further divides the locally qualified between j-category and the remainder.

The residential status of staff in the private sector was recorded for the first time by the December 2001 Manpower Survey. Each undertaking reported the numbers of locally qualified and non-locally qualified employees; full-time employees with j-category housing qualifications were recorded separately from other locally qualified staff.
5. The International Labour Organisation (ILO) definition of unemployment includes all adults (aged 16 and over) who are not working but are looking for or waiting to take up a job.
6. The historic numbers for the private sector presented in the appendices show some minor differences from those presented in previous Manpower Survey reports; these arise from revisions to staffing levels reported by a small number of undertakings.
7. As detailed in the complementary Manpower Report published by the States of Jersey Treasury and Resources Department, the public sector employment figures from December 2007 onwards have been determined using the new Human Resources Information System. (HRIS). The resulting headcount figure for the public sector now counts employees working in more than one post within the States of Jersey only once; previously such employees were counted as multiples. Previous total headcount figures reported for the public sector (shown in Table 1) have not been revised on this basis and as such represent upper bounds in terms of the new HRIS reporting methodology.
8. Further information about the Manpower Survey is available from the States of Jersey Statistics Unit, telephone 440403, and about the States of Jersey Manpower Report from the Treasury and Human Resources Department. Enquiries about the Regulation of Undertakings and Development Law should be addressed to the Population Office, telephone 448930.

Appendix 1- Manpower Engaged by Sector

(in businesses in which two or more people are engaged)

	Dec-99	Jun-00	Dec-00	Jun-01	Dec-01	Jun-02	Dec-02	Jun-03	Dec-03	Jun-04	Dec-04	Jun-05	Dec-05	Jun-06	Dec-06	Jun-07	Dec-07	Jun-08	Dec-08	Jun-09	Dec-09	
Full-time staff																						
Agriculture and Fishing	1,470	1,980	1,420	1,940	1,330	1,870	1,410	1,810	1,360	1,710	1,250	1,910	1,230	1,860	1,280	1,950	1,300	1,570	1,270	1,900	1,250	
Manufacturing	1,910	1,970	1,880	1,770	1,740	1,830	1,730	1,700	1,560	1,550	1,380	1,390	1,340	1,280	1,240	1,220	1,170	1,250	1,090	1,070	1,040	
Construction and Quarrying	4,100	4,090	3,990	4,320	4,320	4,410	4,280	4,160	3,910	4,050	4,020	4,340	4,290	4,600	4,460	4,550	4,450	4,580	4,520	4,510	4,500	
Electricity, Gas and Water	580	610	600	590	580	560	540	530	500	490	490	480	480	490	490	480	490	480	490	500	470	
Wholesale and Retail Trades	6,270	6,350	6,190	6,250	6,140	6,200	6,080	6,180	6,140	6,130	6,350	6,330	6,430	6,360	6,520	6,360	6,610	6,420	6,360	6,170	6,310	
Hotels, Restaurants & Bars	3,800	6,120	3,720	5,720	3,490	5,530	3,560	5,410	3,550	5,210	3,370	5,080	3,410	5,200	3,430	5,160	3,640	5,080	3,500	4,720	3,470	
Transport, Storage & Communication	2,370	2,500	2,300	2,530	2,290	2,490	2,260	2,410	2,210	2,370	2,210	2,370	2,160	2,320	2,210	2,330	2,260	2,340	2,230	2,310	2,200	
Computer and related activities	250	280	310	300	300	320	300	320	320	310	320	330	340	350	320	340	360	370	380	380	370	
Financial and Legal Activities	10,140	10,400	10,510	10,670	10,890	10,980	11,000	10,730	10,500	10,440	10,420	10,570	10,560	10,800	11,170	11,430	11,840	11,970	12,170	12,000	11,810	
Miscellaneous Business Activities	1,240	1,350	1,330	1,370	1,270	1,380	1,330	1,380	1,330	1,380	1,290	1,370	1,300	1,410	1,390	1,510	1,510	1,700	1,630	1,690	1,660	
Education, Health and Other Services	2,530	2,710	2,580	2,750	2,610	2,790	2,710	2,860	2,800	2,910	2,790	2,880	2,820	2,950	2,970	3,130	3,070	3,250	3,190	3,270	3,250	
Total full-time staff	34,650	38,350	34,820	38,210	34,970	38,340	35,190	37,480	34,180	36,540	33,890	37,060	34,360	37,610	35,460	38,450	36,690	39,030	36,830	38,500	36,330	
Part-time staff																						
Agriculture and Fishing	160	210	170	200	180	230	150	240	160	210	170	170	150	230	150	190	160	660	150	200	150	
Manufacturing	410	420	380	480	460	430	370	360	320	330	300	320	260	250	250	270	250	330	190	200	160	
Construction and Quarrying	240	240	260	260	260	250	280	250	260	300	270	250	250	250	240	240	240	270	260	260	280	
Electricity, Gas and Water	20	10	20	20	20	20	20	10	10	10	20	20	10	10	40	40	30	40	40	40	40	
Wholesale and Retail Trades	1,720	1,730	1,590	1,560	1,620	1,560	1,560	1,640	1,690	1,640	1,850	1,750	1,860	1,710	1,790	1,710	1,600	1,860	1,640	1,870	1,980	
Hotels, Restaurants & Bars	940	1,030	950	1,000	900	1,010	780	950	800	920	800	1,030	860	960	930	1,050	880	970	1,020	1,260	920	
Transport, Storage & Communication	230	360	290	320	280	270	240	230	220	220	210	230	230	270	230	300	290	360	290	330	320	
Computer and related activities	50	70	70	60	60	60	60	60	50	40	60	60	60	50	50	50	50	60	50	50	50	
Financial and Legal Activities	1,270	1,300	1,330	1,360	1,320	1,290	1,270	1,330	1,260	1,210	1,200	1,190	1,180	1,260	1,080	1,110	1,130	1,120	1,120	1,110	1,080	
Miscellaneous Business Activities	1,160	1,250	1,180	1,260	1,110	1,170	1,210	1,280	1,240	1,240	1,210	1,310	1,260	1,310	1,290	1,330	1,350	1,420	1,420	1,460	1,460	
Education, Health and Other Services	1,450	1,480	1,450	1,540	1,460	1,450	1,380	1,470	1,420	1,480	1,400	1,520	1,400	1,470	1,390	1,480	1,420	1,500	1,480	1,670	1,480	
Total part-time staff	7,630	8,080	7,670	8,050	7,670	7,720	7,310	7,830	7,430	7,590	7,460	7,850	7,520	7,770	7,430	7,760	7,400	8,580	7,660	8,450	7,920	
All staff																						
Agriculture and Fishing	1,640	2,190	1,580	2,140	1,510	2,100	1,560	2,050	1,530	1,920	1,420	2,080	1,380	2,090	1,430	2,140	1,460	2,230	1,420	2,100	1,400	
Manufacturing	2,310	2,390	2,250	2,240	2,200	2,260	2,100	2,060	1,880	1,870	1,680	1,710	1,600	1,530	1,480	1,490	1,420	1,580	1,270	1,270	1,190	
Construction and Quarrying	4,340	4,330	4,250	4,570	4,590	4,660	4,560	4,410	4,170	4,350	4,290	4,590	4,540	4,850	4,700	4,790	4,690	4,850	4,780	4,760	4,780	
Electricity, Gas and Water	600	620	610	610	600	580	560	540	510	500	510	500	490	500	530	510	520	510	530	530	510	
Wholesale and Retail Trades	7,990	8,080	7,780	7,810	7,760	7,750	7,640	7,810	7,840	7,770	8,210	8,080	8,290	8,070	8,310	8,060	8,210	8,290	8,000	8,030	8,290	
Hotels, Restaurants & Bars	4,740	7,150	4,670	6,720	4,390	6,530	4,340	6,360	4,350	6,130	4,170	6,110	4,270	6,160	4,360	6,210	4,510	6,060	4,520	5,980	4,380	
Transport, Storage & Communication	2,600	2,850	2,590	2,850	2,570	2,760	2,490	2,640	2,420	2,600	2,410	2,610	2,390	2,590	2,440	2,620	2,550	2,690	2,520	2,640	2,530	
Computer and related activities	290	350	370	360	360	370	360	380	370	350	370	390	400	400	370	390	410	430	430	430	420	
Financial and Legal Activities	11,410	11,700	11,830	12,040	12,220	12,270	12,270	12,070	11,750	11,640	11,620	11,760	11,740	12,060	12,250	12,540	12,970	13,090	13,300	13,120	12,890	
Miscellaneous Business Activities	2,400	2,600	2,510	2,630	2,380	2,560	2,540	2,650	2,570	2,610	2,500	2,680	2,570	2,720	2,680	2,840	2,850	3,120	3,050	3,160	3,120	
Education, Health and Other Services	3,980	4,180	4,040	4,300	4,070	4,230	4,090	4,340	4,220	4,390	4,190	4,400	4,230	4,420	4,360	4,610	4,490	4,750	4,670	4,940	4,740	
Total staff	42,280	46,430	42,490	46,260	42,630	46,070	42,500	45,300	41,600	44,140	41,350	44,900	41,880	45,370	42,890	46,210	44,090	47,600	44,490	46,950	44,250	

Note: Staff numbers and vacancies in the Appendices have been rounded independently to the nearest 10. Hence, components may not add to group totals.

Appendix 2- Staff numbers and vacancies

(all businesses, including one-person businesses)

Staff numbers

	Dec-05	Jun-06	Dec-06	Jun-07	Dec-07	Jun-08	Dec-08	Jun-09	Dec-09
Full-time staff									
Agriculture and Fishing	1,300	1,930	1,360	2,030	1,380	1,650	1,360	1,980	1,340
Manufacturing	1,400	1,340	1,300	1,280	1,230	1,310	1,150	1,140	1,100
Construction and Quarrying	4,650	4,970	4,840	4,940	4,850	4,980	4,950	4,950	4,960
Electricity, Gas and Water	480	490	490	480	490	480	490	500	480
Wholesale and Retail Trades	6,610	6,550	6,700	6,540	6,810	6,620	6,580	6,380	6,530
Hotels, Restaurants & Bars	3,450	5,220	3,480	5,190	3,690	5,120	3,540	4,750	3,530
Transport, Storage & Communication	2,250	2,400	2,310	2,440	2,370	2,460	2,350	2,430	2,340
Computer and related activities	400	420	390	420	440	450	450	450	450
Financial and Legal Activities	10,620	10,870	11,240	11,500	11,910	12,050	12,250	12,080	11,880
Miscellaneous Business Activities	1,500	1,630	1,610	1,730	1,730	1,940	1,880	1,950	1,950
Education, Health and Other Services	2,980	3,110	3,140	3,310	3,260	3,450	3,390	3,480	3,470
Total full-time staff	35,630	38,920	36,860	39,870	38,140	40,500	38,400	40,090	38,020
Part-time staff									
Agriculture and Fishing	180	240	170	210	180	680	180	230	180
Manufacturing	280	280	270	300	280	360	220	220	180
Construction and Quarrying	290	280	280	280	280	310	300	300	330
Electricity, Gas and Water	10	10	40	40	30	30	40	40	40
Wholesale and Retail Trades	2,030	1,880	1,980	1,900	1,790	2,070	1,830	2,080	2,200
Hotels, Restaurants & Bars	880	970	950	1,070	900	990	1,060	1,310	970
Transport, Storage & Communication	240	290	250	310	310	370	320	350	350
Computer and related activities	90	80	80	80	90	90	80	100	90
Financial and Legal Activities	1,220	1,310	1,120	1,160	1,190	1,180	1,180	1,170	1,130
Miscellaneous Business Activities	1,390	1,430	1,410	1,460	1,480	1,560	1,560	1,620	1,620
Education, Health and Other Services	1,610	1,690	1,610	1,720	1,690	1,750	1,740	1,940	1,790
Total part-time staff	8,210	8,460	8,150	8,510	8,220	9,380	8,510	9,350	8,890
All staff									
Agriculture and Fishing	1,480	2,180	1,530	2,230	1,560	2,330	1,540	2,210	1,530
Manufacturing	1,680	1,610	1,570	1,580	1,510	1,670	1,370	1,360	1,280
Construction and Quarrying	4,930	5,250	5,110	5,220	5,130	5,290	5,250	5,240	5,290
Electricity, Gas and Water	500	500	530	510	520	510	530	530	510
Wholesale and Retail Trades	8,640	8,420	8,680	8,440	8,600	8,690	8,410	8,460	8,730
Hotels, Restaurants & Bars	4,330	6,190	4,430	6,260	4,590	6,110	4,600	6,060	4,500
Transport, Storage & Communication	2,490	2,690	2,560	2,760	2,680	2,830	2,670	2,790	2,690
Computer and related activities	490	500	480	500	520	540	540	550	540
Financial and Legal Activities	11,850	12,180	12,370	12,660	13,100	13,220	13,430	13,260	13,010
Miscellaneous Business Activities	2,880	3,050	3,010	3,190	3,220	3,490	3,440	3,570	3,570
Education, Health and Other Services	4,590	4,800	4,750	5,030	4,940	5,200	5,130	5,420	5,260
Total staff	43,850	47,380	45,000	48,380	46,360	49,880	46,910	49,440	46,900

Vacancies

Dec-05	Jun-06	Dec-06	Jun-07	Dec-07	Jun-08	Dec-08	Jun-09	Dec-09
90	30	60	40	60	60	40	30	40
60	60	70	70	100	70	50	60	120
320	260	310	310	330	270	230	220	250
20	20	20	20	20	20	10	10	20
380	360	320	370	370	370	330	350	320
360	310	370	260	270	260	230	200	210
80	90	70	100	80	80	60	50	40
30	30	30	40	30	30	40	30	20
630	820	850	810	820	720	490	380	360
110	120	130	130	120	160	110	120	130
140	150	170	150	170	170	150	150	160
2,200	2,250	2,400	2,290	2,380	2,210	1,730	1,590	1,670
30	+	+	+	10	10	+	10	+
20	10	20	10	30	20	+	10	10
10	10	10	10	20	10	10	20	20
+	+	+	+	+	10	+	+	+
90	80	100	100	80	80	80	80	80
60	60	60	50	120	140	100	60	80
20	10	10	10	20	20	10	10	10
10	10	+	+	+	+	10	10	10
20	40	30	30	30	30	20	20	20
40	30	50	90	70	60	70	50	40
100	100	100	90	110	110	110	90	70
400	360	380	400	480	480	410	360	350
120	40	60	40	70	60	40	40	50
80	60	90	80	130	80	50	70	130
330	270	330	320	350	280	250	240	270
20	20	20	20	20	20	10	10	20
470	440	420	470	450	440	410	420	400
410	370	430	300	390	400	330	260	290
90	100	70	110	100	100	70	60	60
30	40	40	50	40	40	50	40	30
650	860	880	840	850	760	500	400	390
160	150	190	210	190	230	180	180	170
240	260	270	250	280	280	260	240	230
2,600	2,600	2,780	2,690	2,860	2,690	2,140	1,950	2,010

Vacancies as % of employed

Dec-05	Jun-06	Dec-06	Jun-07	Dec-07	Jun-08	Dec-08	Jun-09	Dec-09
7	2	4	2	4	4	3	2	3
4	4	5	5	8	5	4	5	11
7	5	6	6	7	5	5	4	5
4	4	4	4	4	4	2	2	4
6	5	5	6	5	6	5	5	5
10	6	11	5	7	5	6	4	6
4	4	3	4	3	3	3	2	2
8	7	8	10	7	7	9	7	4
6	8	8	7	7	6	4	3	3
7	7	8	8	7	8	6	6	7
5	5	5	5	5	5	4	4	5
6	6	7	6	6	5	5	4	4
17	-	-	-	6	1	-	4	-
7	4	7	3	11	6	-	5	6
3	4	4	4	7	3	3	7	6
-	-	-	-	-	33	-	-	-
4	4	5	5	4	4	4	4	4
7	6	6	5	13	14	9	5	8
8	3	4	3	6	5	3	3	3
11	13	-	-	-	-	13	10	11
2	3	3	3	3	3	2	2	2
3	2	4	6	5	4	4	3	2
6	6	6	5	7	6	6	5	4
5	4	5	5	6	5	5	4	4
8	2	4	2	4	3	3	2	3
5	4	6	5	9	5	4	5	10
7	5	6	6	7	5	5	5	5
4	4	4	4	4	4	2	2	4
5	5	5	6	5	5	5	5	5
9	6	10	5	8	7	7	4	6
4	4	3	4	4	4	3	2	2
6	8	8	10	8	7	9	7	6
5	7	7	7	6	6	4	3	3
6	5	6	7	6	7	5	5	5
5	5	6	5	6	5	5	4	4
6	5	6	6	6	5	5	4	4

Note: + means a non-zero number less than 5.

Note: + means a non-zero number less than 5.

Appendix 3 - Residential Qualifications (see Note 4 for definitions)

(all businesses, including one-person businesses)

	Dec-07				Jun-08				Dec-08				Jun-09				Dec-09			
	Locally Qualified	J- category	Non-locally Qualified	Total	Locally Qualified	J- category	Non-locally Qualified	Total	Locally Qualified	J- category	Non-locally Qualified	Total	Locally Qualified	J- category	Non-locally Qualified	Total	Locally Qualified	J- category	Non-locally Qualified	Total
Full-time staff																				
Agriculture and Fishing	950	+	430	1,380	1,030	+	610	1,650	940	+	420	1,360	1,020	+	960	1,980	950	+	390	1,340
Manufacturing	1,020	10	200	1,230	1,060	20	230	1,310	1,000	20	130	1,150	1,000	20	120	1,140	970	20	110	1,100
Construction and Quarrying	4,370	30	450	4,850	4,450	30	500	4,980	4,430	30	490	4,950	4,420	40	490	4,950	4,430	40	490	4,960
Electricity, Gas and Water	460	+	30	490	450	+	30	480	460	+	30	490	460	+	30	500	440	+	30	480
Wholesale and Retail Trades	5,710	50	1,050	6,810	5,460	60	1,110	6,620	5,480	60	1,040	6,580	5,400	60	920	6,380	5,490	60	980	6,530
Hotels, Restaurants & Bars	1,860	30	1,790	3,690	2,110	30	2,970	5,120	1,810	30	1,700	3,540	2,110	20	2,620	4,750	1,870	30	1,630	3,530
Transport, Storage & Communication	2,210	40	120	2,370	2,260	40	160	2,460	2,200	40	110	2,350	2,240	40	150	2,430	2,180	50	110	2,340
Computer and related activities	360	10	60	440	370	10	70	450	380	10	60	450	390	10	50	450	400	10	40	450
Financial and Legal Activities	10,070	640	1,200	11,910	10,200	710	1,140	12,050	10,290	740	1,230	12,250	10,140	740	1,210	12,080	10,010	750	1,120	11,880
Miscellaneous Business Activities	1,580	40	120	1,730	1,720	40	170	1,940	1,720	40	130	1,880	1,760	40	160	1,950	1,770	40	140	1,950
Education, Health and Other Services	2,720	130	400	3,260	2,870	150	440	3,450	2,860	140	380	3,390	2,910	140	430	3,480	2,940	140	390	3,470
Total full-time staff	31,310	1,000	5,830	38,140	31,980	1,090	7,430	40,500	31,560	1,120	5,710	38,400	31,840	1,120	7,140	40,090	31,440	1,140	5,430	38,020
Part-time staff																				
Agriculture and Fishing	170		10	180	230		440	680	180		10	180	200		30	230	180		+	180
Manufacturing	220		50	280	280		80	360	180		40	220	170		50	220	160		30	180
Construction and Quarrying	270		10	280	310		10	310	290		10	300	290		10	300	330		+	330
Electricity, Gas and Water	30		+	30	30		+	30	40		+	40	30		+	40	30		+	40
Wholesale and Retail Trades	1,660		130	1,790	1,890		170	2,070	1,690		140	1,830	1,900		180	2,080	2,030		170	2,200
Hotels, Restaurants & Bars	600		310	900	610		380	990	670		390	1,060	820		490	1,310	650		320	970
Transport, Storage & Communication	310		+	310	370		+	370	310		+	320	350		10	350	350		+	350
Computer and related activities	80		+	90	90		+	90	80		+	80	90		+	100	90		+	90
Financial and Legal Activities	1,170		20	1,190	1,160		20	1,180	1,160		20	1,180	1,160		20	1,170	1,120		20	1,130
Miscellaneous Business Activities	990		500	1,480	1,060		500	1,560	1,100		460	1,560	1,140		480	1,620	1,220		400	1,620
Education, Health and Other Services	1,620		70	1,690	1,660		90	1,750	1,660		80	1,740	1,840		100	1,940	1,710		80	1,790
Total part-time staff	7,120		1,100	8,220	7,690		1,700	9,380	7,340		1,160	8,510	7,990		1,370	9,350	7,860		1,030	8,890
All staff																				
Agriculture and Fishing	1,120	+	440	1,560	1,270	+	1,060	2,330	1,120	+	420	1,540	1,220	+	990	2,210	1,130	+	390	1,530
Manufacturing	1,250	10	250	1,510	1,340	20	310	1,670	1,170	20	170	1,370	1,170	20	180	1,360	1,130	20	140	1,280
Construction and Quarrying	4,640	30	450	5,130	4,750	30	510	5,290	4,720	30	500	5,250	4,710	40	500	5,240	4,760	40	490	5,290
Electricity, Gas and Water	490	+	30	520	480	+	30	510	490	+	30	530	490	+	40	530	470	+	30	510
Wholesale and Retail Trades	7,370	50	1,180	8,600	7,350	60	1,280	8,690	7,170	60	1,170	8,410	7,300	60	1,100	8,460	7,510	60	1,160	8,730
Hotels, Restaurants & Bars	2,460	30	2,100	4,590	2,730	30	3,350	6,110	2,480	30	2,100	4,600	2,930	20	3,100	6,060	2,520	30	1,950	4,500
Transport, Storage & Communication	2,530	40	120	2,680	2,630	40	160	2,830	2,510	40	120	2,670	2,590	40	160	2,790	2,530	50	110	2,690
Computer and related activities	440	10	60	520	460	10	70	540	460	10	60	540	490	10	50	550	490	10	40	540
Financial and Legal Activities	11,240	640	1,220	13,100	11,350	710	1,160	13,220	11,450	740	1,250	13,430	11,290	740	1,220	13,260	11,130	750	1,130	13,010
Miscellaneous Business Activities	2,570	40	610	3,220	2,780	40	670	3,490	2,810	40	590	3,440	2,900	40	630	3,570	2,990	40	540	3,570
Education, Health and Other Services	4,340	130	480	4,940	4,520	150	530	5,200	4,520	140	470	5,130	4,740	140	530	5,420	4,650	140	470	5,260
Total staff	38,430	1,000	6,930	46,360	39,670	1,090	9,120	49,880	38,910	1,120	6,880	46,910	39,820	1,120	8,500	49,440	39,300	1,140	6,460	46,900

Notes: j-category employees are employed on a full-time basis only;
+ means a non-zero number less than 5.