

Jersey Labour Market at December 2010

Statistics Unit: www.gov.je/statistics

This report presents information on employment in Jersey at the end of December 2010, bringing together the results of the private sector¹ Manpower Survey and the public sector manpower figures compiled by the States of Jersey.

Headlines

The principal features of the Jersey Labour Market at December 2010 were²:

- **total employment was 53,460**; a decrease of -110 over the last twelve months;
- the **private sector saw a net decrease of -90** over the twelve months to December 2010 and the **public sector recorded a net decrease of -10**;
- of total employment: **46,690 (87%) were in the private sector** (including the States Trading Committees) and **6,780 (13%) were in the public sector**²;
- the **decrease in private sector employment was driven by the Finance sector**, for which employment in December 2010 was:
 - down -200 on an annual basis; and down -90 in the last six months of 2010;
 - down -750 from the previous peak seen in December 2008.
- the annual and longer-term falls in employment in the Finance sector occurred primarily in the **Banking** sub-sector, for which employment in December 2010 was almost -300 lower than in December 2009 and some -750 lower than in 2008.
- Employment in Jersey's banks at the end of 2010 was at its lowest level for almost five years, being similar to that recorded in mid-2006. Prior to this, employment in banks had increased from around 5,200 in 1998 to almost 6,200 in 2002.
- in the private sector overall, compared with December 2009, the number of:
 - **locally qualified staff increased by +260**,
 - **j-category employees decreased by -30**,
 - **non-locally qualified staff decreased by -320**;
- December 2010 recorded the highest level of locally qualified employees for at least nine years, whilst the number of non-locally qualified employees was at its lowest level for the same period.
- **registered unemployment**³ stood at 1,210 in December 2010; up by +90 compared with December 2009.

¹ The Manpower Survey is analysed by the Statistics Unit on behalf of the Economic Development Department (Note 1).

² Throughout this report numbers are rounded independently to the nearest 10.

³ People registered with the Social Security Department as unemployed and actively seeking work.

Overview: Total Employment

Total employment in Jersey in December 2010, full-time and part-time, was 53,460. This total is 110 lower than a year previously, in December 2009.

The private sector, including States Trading Committees (see Note 2) and single-person enterprises, employed 46,690 people, which is 90 fewer than in December 2009.

The public sector headcount in December 2010 was 6,780, representing a decrease of 10 on an annual basis and a decrease of 60 in the last six months of 2010⁴.

Table 1: Employment (headcount) in the private and public sectors⁵.

1998	Jun	49,480	5,970	55,450
	Dec	44,640	5,970	50,610
1999	Jun	48,770	6,170	54,940
	Dec	43,610	6,010	49,620
2000	Jun	47,760	6,110	53,870
	Dec	43,810	5,990	49,810
2001	Jun	47,560	6,200	53,760
	Dec	43,960	6,120	50,090
2002	Jun	47,390	6,250	53,640
	Dec	43,960	6,310	50,270
2003	Jun	46,790	6,440	53,230
	Dec	43,210	6,410	49,620
2004	Jun	45,830	6,590	52,420
	Dec	43,130	6,510	49,640
2005	Jun	46,760	6,530	53,280
	Dec	43,850	6,430	50,280
2006	Jun	47,380	6,540	53,910
	Dec	45,000	6,560	51,570
2007	Jun	48,380	6,730	55,110
	Dec	46,360	6,630	52,980
2008	Jun	49,880	6,730	56,610
	Dec	46,910	6,650	53,560
2009	Jun	49,440	6,750	56,190
	Dec	46,780	6,790	53,570
2010	Jun	49,310	6,840	56,150
	Dec	46,690	6,780	53,460

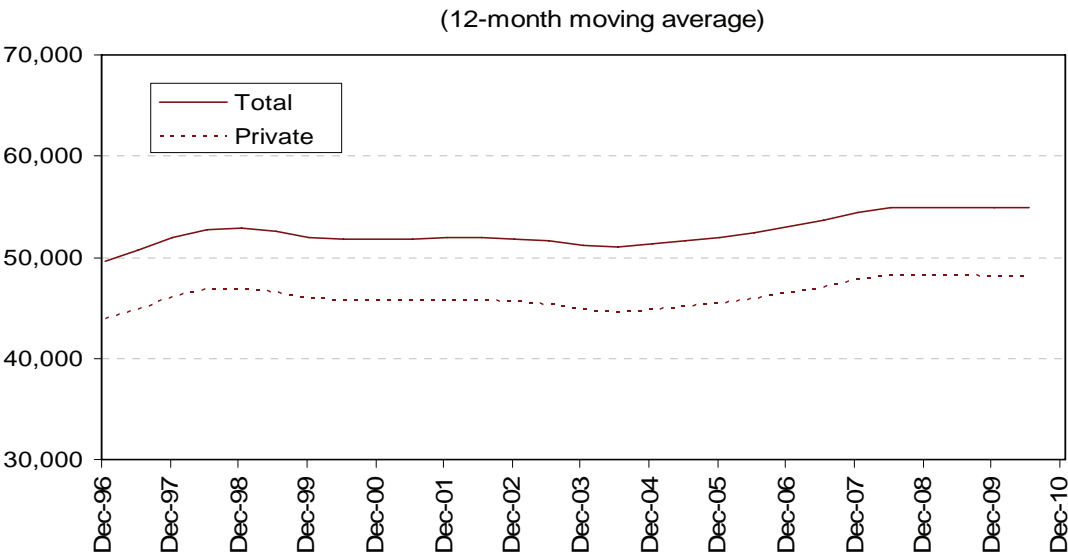
Numbers are rounded independently to the nearest 10.

⁴ The numbers of full-time equivalent employees (FTEs) in the public sector were: 5,990 in December 2009; 6,030 in June 2010 and 5,980 in December 2010.

⁵ The public sector headcount figures reported in Table 1 do not include interim employees.

Figure 1 shows total and private sector employment since 1996 (see Note 3). Total employment saw an ongoing increase throughout the period 2005-2008 and has been essentially flat for the last two years, at the greatest level seen for at least 15 years.

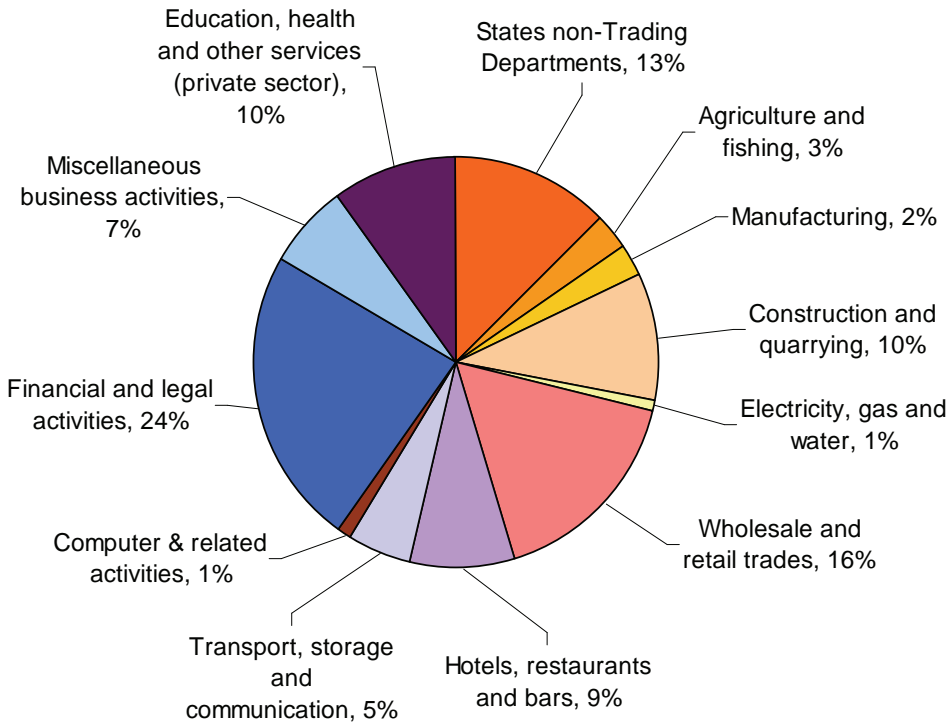
Figure 1 - Total and Private sector Headcount



Sectoral Breakdown

Figure 2 shows the sectoral breakdown of employment at December 2010:

Figure 2- Jersey employment Dec 2010 headcount



As Figure 2 shows:

- almost a quarter (24%) of the total were engaged in the Finance sector (12,680);
- nearly a sixth (16%) were in Wholesale and retail trades (8,690);
- the public sector (excluding Trading Committees) accounted for about one in eight (13%) of Jersey's labour force.

Private sector

There were 6,370 active undertakings in Jersey in December 2010 of which 2,930 were one-person businesses.

The number of people employed in Jersey businesses in December 2010 was 46,690, comprising 37,810 full-time and 8,880 part-time employees. The number of full-time staff fell by -100 on an annual basis whilst the number of part-time staff increased by +10.

Total employment in the private sector in December 2010 was down by -90 on an annual basis. This net fall was driven by a decrease of -200 staff in the Finance sector.

In December 2010, total employment in the Finance sector stood at 12,680. The fall of -200 compared with December 2009 was made up of a fall of -110 in the first six months of 2010 and a further fall of -90 in the last six months of 2010 (see Figure 3). The overall annual decrease was predominantly in the number of full-time staff, down by -170 compared with December 2009.

Table 2: Employment in the Financial services sub-sectors: Jun 2005 to Dec 2010.

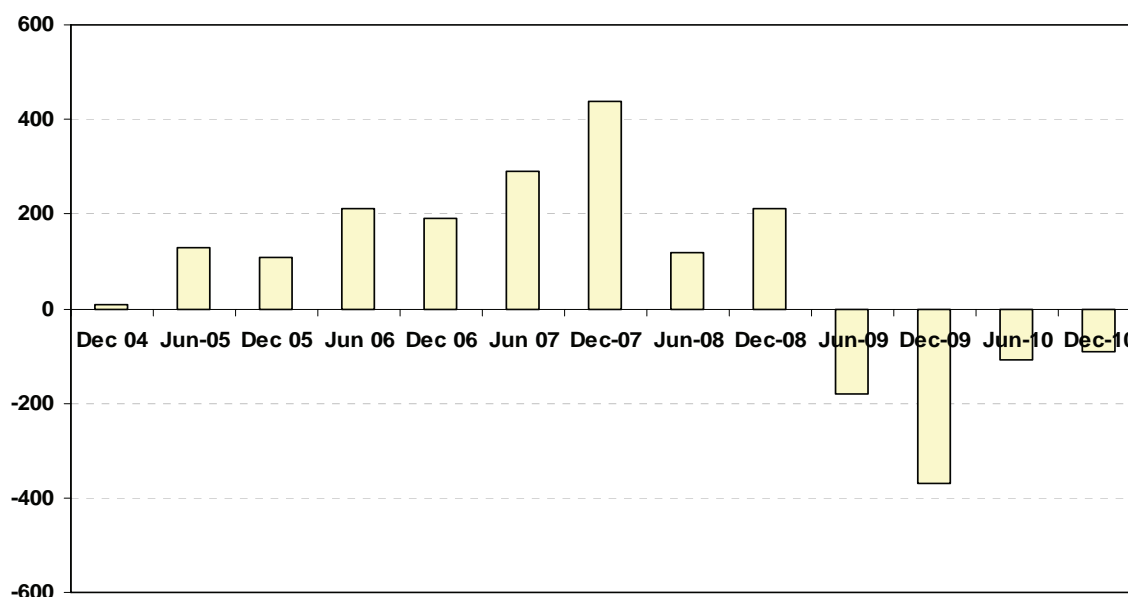
	Banking	Trust and Co. Admin & Fund Mgt	Legal	Accountancy	Other⁶	Total
Jun-05	5,570	2,470	2,150	790	900	11,860
Dec-05	5,460	2,560	2,250	810	900	11,970
Jun-06	5,390	2,830	2,300	780	880	12,180
Dec-06	5,810	2,520	2,320	800	920	12,370
Jun-07	5,840	2,670	2,390	830	940	12,660
Dec-07	6,100	2,790	2,500	870	840	13,100
Jun-08	6,060	2,850	2,560	880	870	13,220
Dec-08	6,050	2,880	2,580	980	950	13,430
Jun-09	5,900	2,950	2,490	940	950	13,250
Dec-09	5,600	2,870	2,490	970	960	12,880
Jun-10	5,470	3,320 ⁷	2,040 ⁷	990	950	12,770
Dec-10	5,310	3,350	2,070	960	980	12,680

⁶ Other includes insurance (general, life and non-life), pension funding and investment and unit trusts.

⁷ The increase apparent in Table 2 for Trust & Co. Admin and Fund management between December 2009 and June 2010 was predominantly due to the reclassification of companies previously in the Legal sub-sector. The latter thus recorded a complementary decrease in the latest six-month period.

The number of people employed in Jersey's Finance sector in December 2010 was -750 lower than that recorded at the previous peak of employment in the sector, in December 2008. Total employment in the sector at the end of 2010 was similar to that seen two and a half years earlier, in mid-2007.

Figure 3 –Six-month changes in Finance sector employment 2004-2010



The annual and longer-term falls in employment recorded by the Finance sector occurred primarily in the Banking sub-sector; the number of staff employed in banks in December 2010 was almost -300 lower than in December 2009 and some -750 lower than in 2008.

Employment in Jersey's banks at the end of 2010 was at its lowest level for almost five years, being similar to that recorded in mid-2006. Prior to this, employment in banks had increased from around 5,200 in 1998 to almost 6,200 in 2002.

The Wholesale and retail and Transport, storage and communications sectors both recorded small falls in employment on an annual basis, of -30. Within the Wholesale and retail sector, a total of 890 staff were employed in fulfilment activities in December 2010.

Small annual increases in employment were seen in the Hotel, restaurant and bars (+50), Manufacturing (+40) and Education, health and other services sectors (+20).

Employment in the Construction sector decreased by -150 in the last half of 2010. Total employment in Construction in December 2010 was at a similar level to that seen throughout 2008 and 2009, which had recorded the highest levels of employment in the sector for at least 15 years.

Employment excluding one-person businesses⁸

Excluding one-person enterprises, there were a total of 3,440 active undertakings in Jersey in December 2010. Total employment in such undertakings was 43,760, a decrease of -350 from December 2009, driven by reduced employment in Finance (down by -230).

Over a shorter time-frame, between June 2010 and December 2010, total employment in the private sector decreased by -2,830. Shorter-term changes are heavily influenced by seasonal factors, as can be seen in Figure 4a. The underlying trend, excluding seasonal and other short-term variations, is shown by Figure 4b (see Note 3). The twelve-month percentage changes are shown in Figure 5.

Figure 4a - Employment in Jersey Undertakings

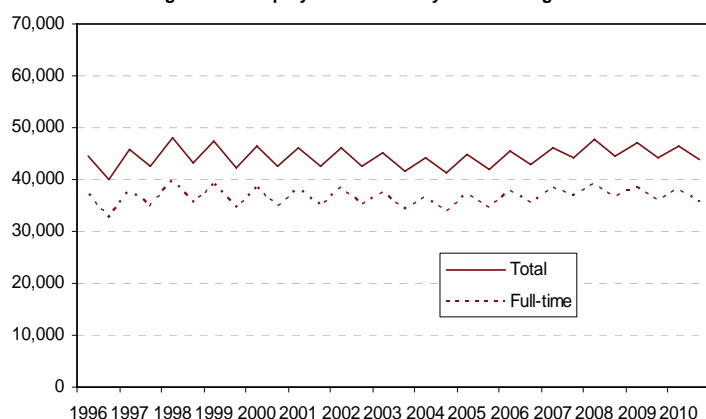


Figure 4b - Underlying trend in employment

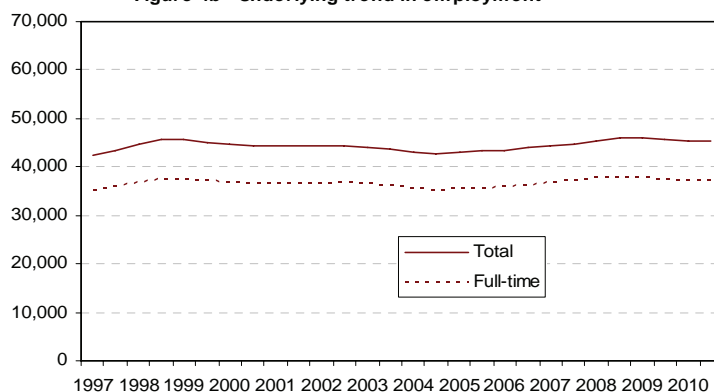
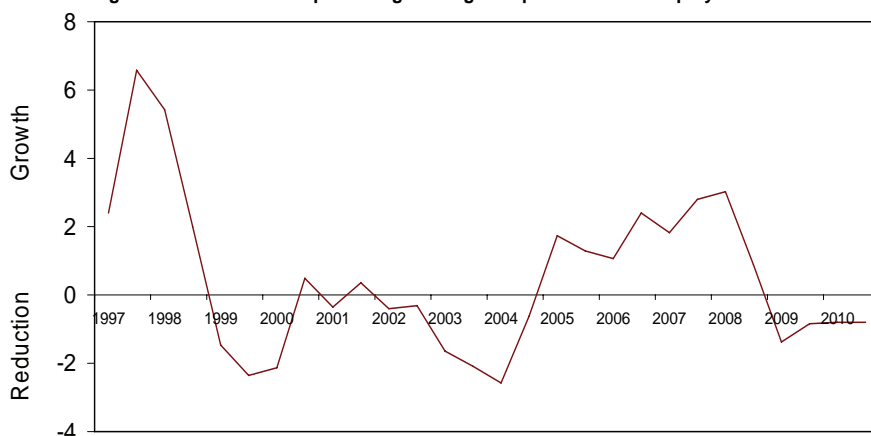


Figure 5 - Twelve month percentage changes in private sector employment



Employment in one-person businesses⁹

In December 2010 there were 2,930 single-person undertakings recorded, some +260 more than a year earlier. The rise in such undertakings was driven by increases in the service sectors, Education, health and other services and Miscellaneous business activities (each up by +70), and in Construction (+30).

⁸ These data are shown in order to obtain a longer term view of employment in Jersey since one-person undertakings were not consistently reported before 2000.

⁹ Single-person undertakings were not consistently recorded prior to 2000; therefore detailed figures both including and excluding single-person undertakings are presented in Appendix.

Residential qualifications

Overall, 85% of people employed in Jersey in December 2010 were locally qualified (as defined by the Regulation of Undertakings and Development Law, see Note 4), more than 3% were j-category and 12% were not locally qualified.

Of the 46,690 people employed in the private sector in December 2010, more than four-fifths (85%) were locally qualified and 2% (1,120 staff) were qualified as j-category. The remaining 13% (6,120), representing about one in eight of all private sector staff, were not locally qualified.

The number of locally qualified staff in the private sector in December 2010 was +260 more than in December 2009 and has increased on an annual basis each year since 2005 (see Figure 6a).

The number of non-locally qualified in December 2010 was -320 lower than in December 2009, representing the third consecutive December figure to show an annual decrease in the number of non-locally qualified employees (see Figures 6a and 7).

December 2010 recorded the highest level of locally qualified employees for at least nine years, since December 2001 when such information was first recorded by the Manpower Survey. In contrast, the number of non-locally qualified employees was at its lowest level for the same period.

Such changes are the result not only of increased or decreased employment of locally qualified and non-qualified staff, but also the effect of non-locally qualified staff becoming locally qualified after five years of continuous residence in Jersey. The number of non-qualified staff becoming locally qualified is estimated to be about 500 each year.

Figure 6a- Private sector Locally qualified and Non qualified staff

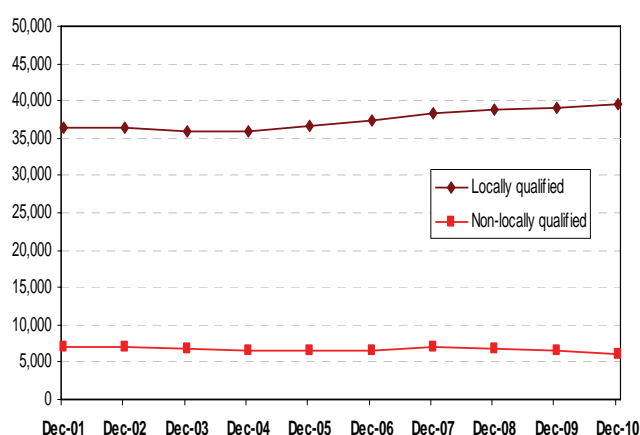
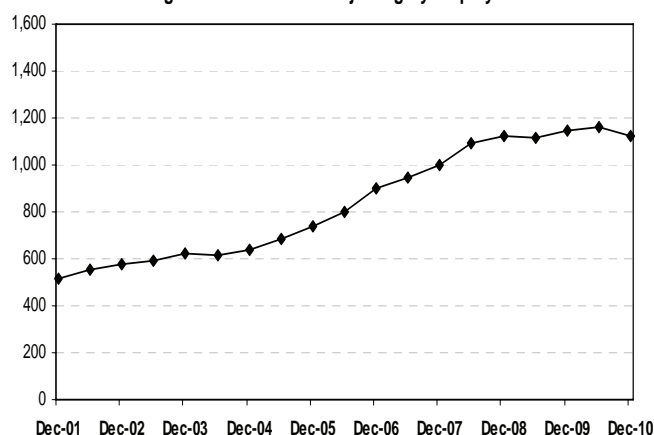


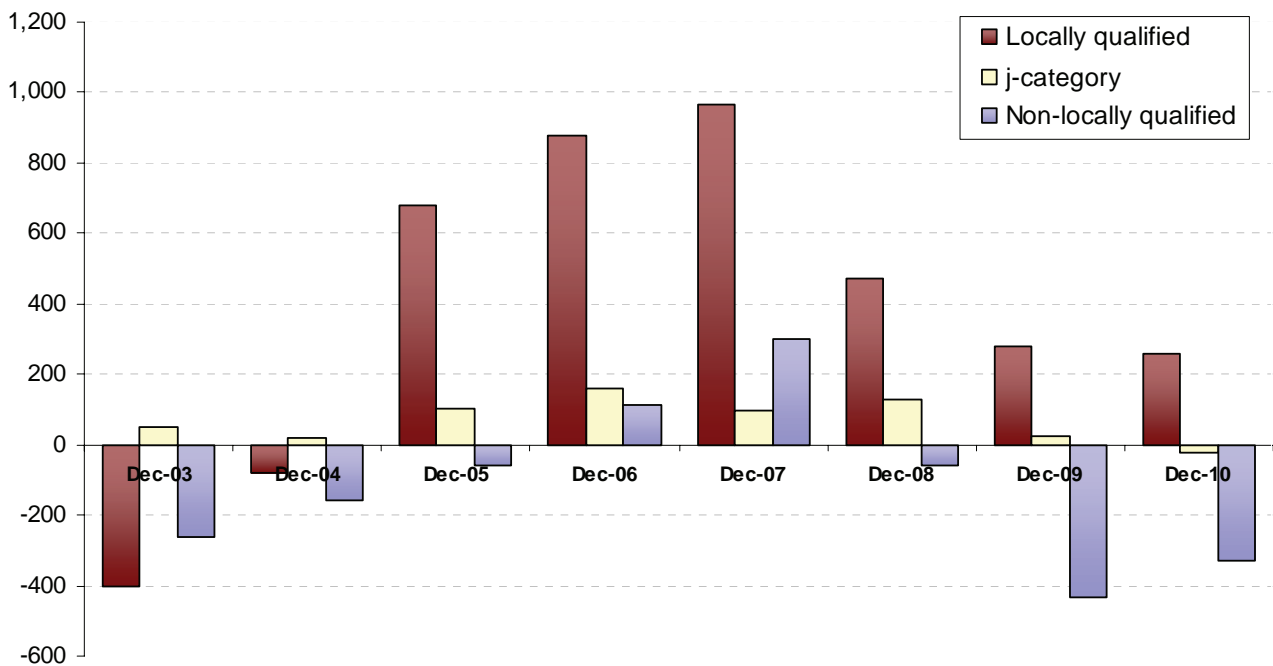
Figure 6b- Private sector j-category employees



The total number of j-category employees in the private sector has more than doubled since the Manpower Survey first recorded the residential qualifications of employees in December 2001 (see Figure 6b). December 2010, however, recorded a decrease of -30 j-category employees on an annual basis.

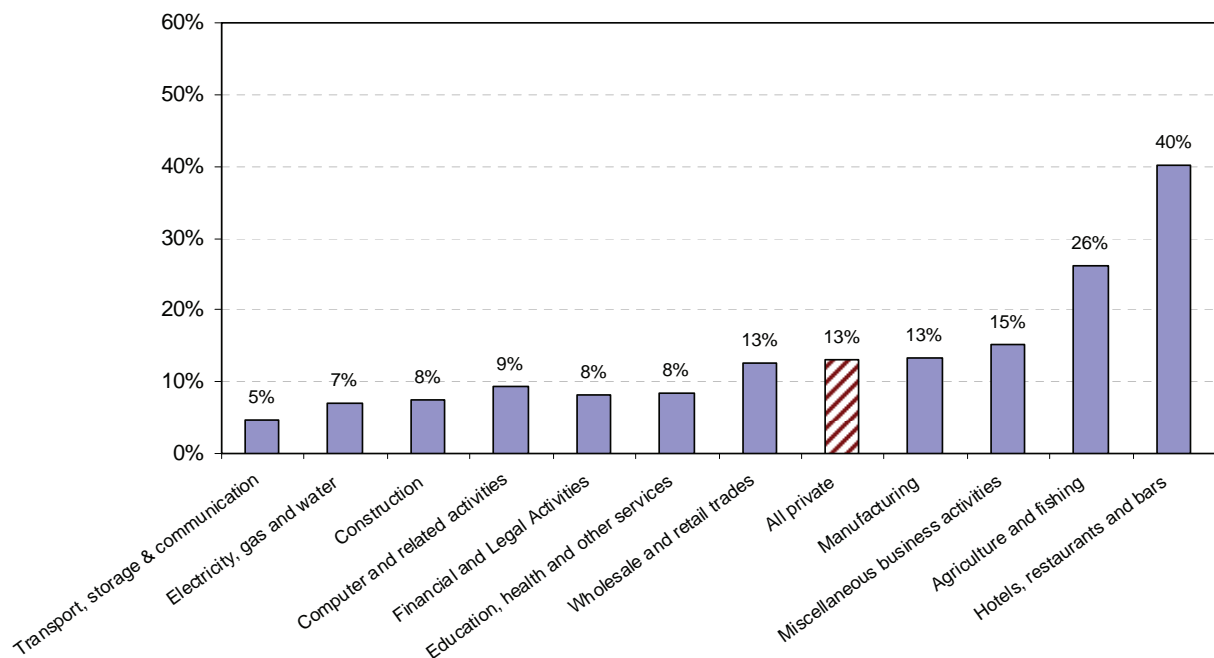
The number of j-category staff in the public sector in December 2010 was 550, accounting for 8% of all public sector employees, and down by -30 on December 2009.

Figure 7 - Annual change in private sector employment by residential qualification



Within the private sector in December 2010, the highest proportions of non-qualified employees (i.e. excluding j-category) were in Hotel, restaurants & bars (40%) and Agriculture (26%). The Transport, storage and communication sector had the lowest proportion of non-qualified staff, at 5% (see Figure 8). About 8% of employees in Finance and Construction were non-qualified.

Figure 8 – Percentage of non-qualified employees by private sector, December 2010



Employment by nationality

Utilising data from the Social Security Department (SSD) it is possible to get an insight into the make up of Jersey's workforce by nationality¹⁰. However, in interpreting these data it is important to understand some key points:

- the nationality data compiled by SSD is based on contributions paid on behalf of contributors (employees only, excluding the self-employed);
- the number of contributions from unique contributors will differ from the number employed primarily because the Social Security data refer to contributions paid *over the entire month*, whilst the employment data is a point in time estimate at either 30 June or 31 December each year. As a result of this timing difference it is not possible to undertake a direct comparison of social security contributions and numbers in employment¹¹.
- nationality recorded by SSD is self-reported and historically has not been a key variable for social security purposes. As a result it is not currently possible to separate Jersey and United Kingdom nationals. These two groups are the largest two nationalities working in Jersey.

Bearing in mind these caveats, during December 2010:

- at least 70% of contributors in December 2010 were from Jersey/UK nationals;
- a total of 3,280 unique contributors (7% of the total) were paid from or on behalf of nationals from A8 countries¹², more than 90% of whom were Polish;
- the number of unique contributors for/by Portuguese nationals was 12% of the total.

For the reasons given above, the actual numbers of people in work at a given point in time will be lower than the figures based on the number of unique contributors.

Unemployment

The number of people registered in Jersey as unemployed and actively seeking work (ASW) in December 2010 was 1,210, up by +90 on December 2009.

Figure 9 shows the total number of people registered as ASW at the end of each month in 2009 and 2010, and also more recent figures for January and February 2011¹³.

The most recent figures show that 1,470 people were registered as unemployed and actively seeking work in Jersey in February 2011.

In interpreting these unemployment figures, it should be emphasised that there is no legal requirement for all unemployed residents in Jersey to register as actively seeking work with the Social Security Department. Therefore, the number of people registered as unemployed should be regarded as an indicator rather than a measure of the actual level of unemployment in the Island.

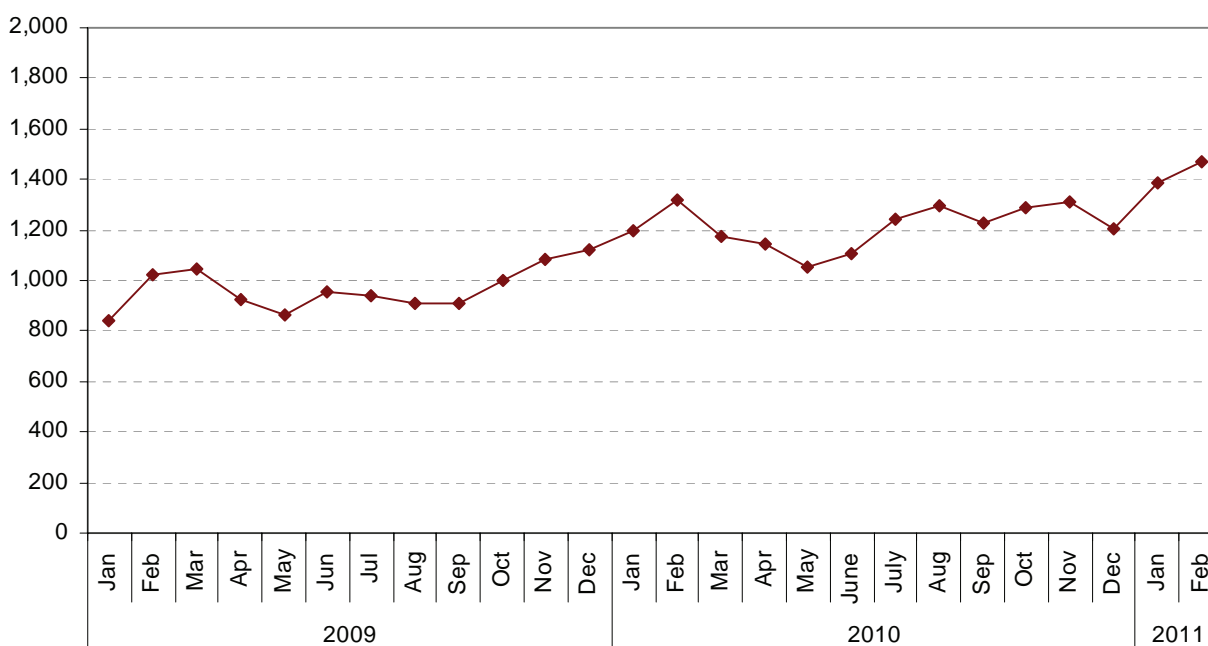
¹⁰ Under the Social Security (Jersey) Law 1974 one of the pieces of information held against everyone's unique registration number is their nationality.

¹¹ Both sources count people with more than one job (with different undertakings) as multiples.

¹² The eight countries which joined ("gained accession to") the European Union in May 2004 were: the Czech Republic, Estonia, Hungary, Latvia, Lithuania, Poland, Slovakia and Slovenia.

¹³ See Registered Unemployment – February 2011; States Of Jersey Statistics Unit, published 25 March 2011.

Figure 9 - Total number of individuals registered as ASW, January 2009– February 2011



International comparisons

In the UK, in the fourth quarter of 2010 there were 29.2 million people employed, 1.5 million people claiming Jobseeker's Allowance (the Claimant Count). In Jersey there were 1,210 persons registered as unemployed in December 2010. People *registered* as unemployed were therefore about 2.2% of total employment in Jersey in December 2010, compared to about 5.1% in the UK¹⁴.

In Guernsey in December 2010 there were 32,240 people in employment (21% in Finance, a similar proportion to Jersey) and 420 people claiming unemployment or jobseeker benefits.

The internationally comparable measure of unemployment is the ILO unemployment rate (see Note 5); for the UK during the fourth quarter of 2010 the ILO rate was 7.9%, whilst that for Jersey in the early summer of 2010 (estimated from the Jersey Annual Social Survey, JASS) was 3.0%.

Vacancies

The total number of vacancies (full- and part-time) in the private sector in December 2010 was 2,020, a similar level to that seen in December 2009.

Statistics Unit

6 April 2011

¹⁴ Figures for the UK are from the Office for National Statistics: Labour Market statistics.

Notes

1. The Manpower Survey is a census of some 6,370 undertakings in Jersey, which employ a total of some 46,690 staff (Dec 2010) including almost 8,880 part-time staff (who may have more than one job). Prior to December 2001, the Survey was conducted quarterly; from June 2002 the survey has taken place at six-monthly intervals.
2. The “private sector” includes States Trading Committees (former and current), the Jersey Financial Services Commission, the Family Nursing and Home Care Service and the Jersey Competition Regulatory Authority. These bodies, which are subject to the Regulation of Undertakings and Development Law, accounted for a total of 1,300 staff at December 2010.
3. For the six-monthly data of Figures 1 and 4b, short-term variations (largely due to seasonal factors) were removed by calculating a weighted three-point moving average; entries for December 1996 and December 2010, therefore, do not appear in these plots.
4. The definition of “locally qualified” as applied under the *Regulation of Undertakings and Development (Jersey) Law, 1973 as amended* includes all persons in the following categories:
 - i) residentially qualified persons falling within any of the Housing Regulations, excluding Regulation (l) and Regulation (m);
 - ii) persons resident for the whole of the past consecutive 5 years;
 - iii) the spouses of (i) or (ii) above;
 - iv) the children under 18 years (or if students under 25 years) of those in (i), (ii) or (iii) above.

The analysis in this report further divides the locally qualified between j-category and the remainder.

The residential status of staff in the private sector was recorded for the first time by the December 2001 Manpower Survey. Each undertaking reported the numbers of locally qualified and non-locally qualified employees; full-time employees with j-category housing qualifications were recorded separately from other locally qualified staff.

5. The International Labour Organisation (ILO) definition of unemployment includes all adults (aged 16 and over) who are not working but are looking for or waiting to take up a job.
6. The historic numbers for the private sector presented in the appendices show some minor differences from those presented in previous Manpower Survey reports; these arise from revisions to staffing levels reported by a small number of undertakings.
7. The public sector employment figures from December 2007 onwards have been determined using the Human Resources Information System. (HRIS). The resulting headcount figure from HRIS counts employees working in more than one post within the States of Jersey only once; previously such employees were counted as multiples. Headcount figures for the public sector prior to December 2007 (shown in Table 1) have not been revised on this basis and as such represent upper bounds in terms of the new HRIS reporting methodology.
8. Further information about the Manpower Survey is available from the States of Jersey Statistics Unit, telephone 440403, and about the States of Jersey Manpower Report from the Treasury and Human Resources Department. Enquiries about the Regulation of Undertakings and Development Law should be addressed to the Population Office, telephone 448930.

Appendix 1- Manpower Engaged by Sector

(in businesses in which two or more people are engaged)

	Jun-01	Jun-02	Dec-02	Jun-03	Dec-03	Jun-04	Dec-04	Jun-05	Dec-05	Jun-06	Dec-06	Jun-07	Dec-07	Jun-08	Dec-08	Jun-09	Dec-09	Jun-10	Dec-10
Full-time staff																			
Agriculture and Fishing	1,940	1,870	1,410	1,810	1,360	1,710	1,250	1,910	1,230	1,860	1,280	1,950	1,300	1,570	1,270	1,900	1,250	1,810	1,210
Manufacturing	1,770	1,830	1,730	1,700	1,560	1,550	1,380	1,390	1,340	1,280	1,240	1,220	1,170	1,250	1,090	1,070	1,030	1,050	1,060
Construction and Quarrying	4,320	4,410	4,280	4,160	3,910	4,050	4,020	4,340	4,290	4,600	4,460	4,550	4,450	4,580	4,520	4,510	4,480	4,640	4,460
Electricity, Gas and Water	590	560	540	530	500	490	490	480	480	490	490	480	490	480	490	500	470	470	480
Wholesale and Retail Trades	6,250	6,200	6,080	6,180	6,140	6,130	6,350	6,330	6,430	6,360	6,520	6,360	6,610	6,420	6,360	6,170	6,300	6,180	6,400
Hotels, Restaurants & Bars	5,720	5,530	3,560	5,410	3,550	5,210	3,370	5,080	3,410	5,200	3,430	5,160	3,640	5,080	3,500	4,720	3,470	4,740	3,470
Transport, Storage & Communication	2,530	2,490	2,260	2,410	2,210	2,370	2,210	2,370	2,160	2,320	2,210	2,330	2,260	2,340	2,230	2,300	2,200	2,210	2,140
Computer and related activities	300	320	300	320	320	310	320	330	340	350	320	340	360	370	380	380	370	360	390
Financial and Legal Activities	10,670	10,980	11,000	10,730	10,500	10,440	10,420	10,570	10,560	10,800	11,170	11,430	11,840	11,970	12,170	12,000	11,690	11,600	11,500
Miscellaneous Business Activities	1,370	1,380	1,330	1,380	1,330	1,380	1,290	1,370	1,300	1,410	1,390	1,510	1,510	1,700	1,630	1,690	1,680	1,760	1,640
Education, Health and Other Services	2,750	2,790	2,710	2,860	2,800	2,910	2,790	2,880	2,820	2,950	2,970	3,130	3,070	3,250	3,190	3,270	3,260	3,320	3,190
Total full-time staff	38,210	38,340	35,190	37,480	34,180	36,540	33,890	37,060	34,360	37,610	35,460	38,450	36,690	39,030	36,830	38,510	36,210	38,150	35,930
Part-time staff																			
Agriculture and Fishing	200	230	150	240	160	210	170	170	150	230	150	190	160	660	150	200	150	300	190
Manufacturing	480	430	370	360	320	330	300	320	260	250	250	270	250	330	190	200	160	200	160
Construction and Quarrying	260	250	280	250	260	300	270	250	250	250	240	240	240	270	260	260	270	290	290
Electricity, Gas and Water	20	20	20	10	10	10	20	20	10	10	40	40	30	30	40	40	40	30	40
Wholesale and Retail Trades	1,560	1,560	1,560	1,640	1,690	1,640	1,850	1,750	1,860	1,710	1,790	1,710	1,600	1,860	1,640	1,870	1,980	1,930	1,860
Hotels, Restaurants & Bars	1,000	1,010	780	950	800	920	800	1,030	860	960	930	1,050	880	970	1,020	1,260	930	1,190	960
Transport, Storage & Communication	320	270	240	230	220	220	210	230	230	270	230	300	290	360	290	330	320	390	340
Computer and related activities	60	60	60	60	50	40	60	60	60	50	50	50	50	60	50	50	50	50	40
Financial and Legal Activities	1,360	1,290	1,270	1,330	1,260	1,210	1,200	1,190	1,180	1,260	1,080	1,110	1,130	1,120	1,120	1,110	1,060	1,030	1,020
Miscellaneous Business Activities	1,260	1,170	1,210	1,280	1,240	1,240	1,210	1,310	1,260	1,310	1,290	1,330	1,350	1,420	1,420	1,460	1,460	1,430	1,430
Education, Health and Other Services	1,540	1,450	1,380	1,470	1,420	1,480	1,400	1,520	1,400	1,470	1,390	1,480	1,420	1,500	1,480	1,670	1,490	1,590	1,510
Total part-time staff	8,050	7,720	7,310	7,830	7,430	7,590	7,460	7,850	7,520	7,770	7,430	7,760	7,400	8,580	7,660	8,450	7,900	8,440	7,830
All staff																			
Agriculture and Fishing	2,140	2,100	1,560	2,050	1,530	1,920	1,420	2,080	1,380	2,090	1,430	2,140	1,460	2,230	1,420	2,100	1,400	2,110	1,400
Manufacturing	2,240	2,260	2,100	2,060	1,880	1,870	1,680	1,710	1,600	1,530	1,480	1,490	1,420	1,580	1,270	1,270	1,190	1,250	1,220
Construction and Quarrying	4,570	4,660	4,560	4,410	4,170	4,350	4,290	4,590	4,540	4,850	4,700	4,790	4,690	4,850	4,780	4,760	4,750	4,920	4,750
Electricity, Gas and Water	610	580	560	540	510	500	510	500	490	500	530	510	520	510	530	530	510	510	520
Wholesale and Retail Trades	7,810	7,750	7,640	7,810	7,840	7,770	8,210	8,080	8,290	8,070	8,310	8,060	8,210	8,290	8,000	8,030	8,280	8,110	8,260
Hotels, Restaurants & Bars	6,720	6,530	4,340	6,360	4,350	6,130	4,170	6,110	4,270	6,160	4,360	6,210	4,510	6,060	4,520	5,980	4,400	5,940	4,430
Transport, Storage & Communication	2,850	2,760	2,490	2,640	2,420	2,600	2,410	2,610	2,390	2,590	2,440	2,620	2,550	2,690	2,520	2,630	2,530	2,610	2,480
Computer and related activities	360	370	360	380	370	350	370	390	400	400	370	390	410	430	430	430	420	410	430
Financial and Legal Activities	12,040	12,270	12,270	12,070	11,750	11,640	11,620	11,760	11,740	12,060	12,250	12,540	12,970	13,090	13,300	13,110	12,750	12,640	12,520
Miscellaneous Business Activities	2,630	2,560	2,540	2,650	2,570	2,610	2,500	2,680	2,570	2,720	2,680	2,840	2,850	3,120	3,050	3,160	3,140	3,190	3,060
Education, Health and Other Services	4,300	4,230	4,090	4,340	4,220	4,390	4,190	4,400	4,230	4,420	4,360	4,610	4,490	4,750	4,670	4,950	4,750	4,910	4,700
Total staff	46,260	46,070	42,500	45,300	41,600	44,140	41,350	44,900	41,880	45,370	42,890	46,210	44,090	47,600	44,490	46,960	44,110	46,590	43,760

Note: Staff numbers and vacancies in the Appendices have been rounded independently to the nearest 10. Hence, components may not add to group totals.

Appendix 2- Staff numbers and vacancies

(all businesses, including one-person businesses)

Staff numbers									
	Dec-06	Jun-07	Dec-07	Jun-08	Dec-08	Jun-09	Dec-09	Jun-10	Dec-10
Full-time staff									
Agriculture and Fishing	1,360	2,030	1,380	1,650	1,360	1,980	1,340	1,900	1,310
Manufacturing	1,300	1,280	1,230	1,310	1,150	1,140	1,100	1,120	1,140
Construction and Quarrying	4,840	4,940	4,850	4,980	4,950	4,950	4,940	5,110	4,950
Electricity, Gas and Water	490	480	490	480	490	500	480	470	480
Wholesale and Retail Trades	6,700	6,540	6,810	6,620	6,580	6,380	6,520	6,420	6,640
Hotels, Restaurants & Bars	3,480	5,190	3,690	5,120	3,540	4,750	3,530	4,790	3,540
Transport, Storage & Communication	2,310	2,440	2,370	2,460	2,350	2,430	2,340	2,340	2,280
Computer and related activities	390	420	440	450	450	450	450	440	470
Financial and Legal Activities	11,240	11,500	11,910	12,050	12,250	12,070	11,760	11,680	11,590
Miscellaneous Business Activities	1,610	1,730	1,730	1,940	1,880	1,950	1,970	2,070	1,970
Education, Health and Other Services	3,140	3,310	3,260	3,450	3,390	3,490	3,480	3,550	3,440
Total full-time staff	36,860	39,870	38,140	40,500	38,400	40,090	37,910	39,900	37,810
Part-time staff									
Agriculture and Fishing	170	210	180	680	180	230	180	340	230
Manufacturing	270	300	280	360	220	220	180	220	180
Construction and Quarrying	280	280	280	310	300	300	320	340	350
Electricity, Gas and Water	40	40	30	30	40	40	40	30	40
Wholesale and Retail Trades	1,980	1,900	1,790	2,070	1,830	2,080	2,200	2,120	2,060
Hotels, Restaurants & Bars	950	1,070	900	990	1,060	1,310	980	1,250	1,020
Transport, Storage & Communication	250	310	310	370	320	350	350	420	380
Computer and related activities	80	80	90	90	80	100	90	100	90
Financial and Legal Activities	1,120	1,160	1,190	1,180	1,180	1,170	1,120	1,100	1,080
Miscellaneous Business Activities	1,410	1,460	1,480	1,560	1,560	1,620	1,620	1,600	1,610
Education, Health and Other Services	1,610	1,720	1,690	1,750	1,740	1,940	1,800	1,900	1,850
Total part-time staff	8,150	8,510	8,220	9,380	8,510	9,350	8,870	9,410	8,880
All staff									
Agriculture and Fishing	1,530	2,230	1,560	2,330	1,540	2,210	1,520	2,240	1,530
Manufacturing	1,570	1,580	1,510	1,670	1,370	1,360	1,280	1,350	1,320
Construction and Quarrying	5,110	5,220	5,130	5,290	5,250	5,240	5,270	5,450	5,300
Electricity, Gas and Water	530	510	520	510	530	530	510	510	520
Wholesale and Retail Trades	8,680	8,440	8,600	8,690	8,410	8,460	8,720	8,540	8,690
Hotels, Restaurants & Bars	4,430	6,260	4,590	6,110	4,600	6,060	4,510	6,040	4,560
Transport, Storage & Communication	2,560	2,760	2,680	2,830	2,670	2,790	2,690	2,770	2,660
Computer and related activities	480	500	520	540	540	550	540	540	560
Financial and Legal Activities	12,370	12,660	13,100	13,220	13,430	13,250	12,880	12,770	12,680
Miscellaneous Business Activities	3,010	3,190	3,220	3,490	3,440	3,570	3,590	3,660	3,580
Education, Health and Other Services	4,750	5,030	4,940	5,200	5,130	5,420	5,270	5,450	5,290
Total staff	45,000	48,380	46,360	49,880	46,910	49,440	46,780	49,310	46,690

Vacancies								
Dec-06	Jun-07	Dec-07	Jun-08	Dec-08	Jun-09	Dec-09	Jun-10	Dec-10
60	40	60	60	40	30	40	50	40
70	70	100	70	50	60	120	120	120
310	310	330	270	230	220	250	240	240
20	20	20	20	10	10	20	10	10
320	370	370	370	330	350	320	360	330
370	260	270	260	230	200	210	210	200
70	100	80	80	60	50	40	50	60
30	40	30	30	40	30	20	30	20
850	810	820	720	490	380	370	440	460
130	130	120	160	110	120	130	110	120
170	150	170	170	150	150	160	120	110
2,400	2,290	2,380	2,210	1,730	1,590	1,670	1,730	1,700
+	+	10	10	+	10	+	10	50
20	10	30	20	+	10	10	10	10
10	10	20	10	10	20	20	10	10
+	+	+	10	+	+	+	+	+
100	100	80	80	80	80	80	80	50
60	50	120	140	100	60	80	110	60
10	10	20	20	10	10	10	10	10
+	+	+	+	10	10	10	+	+
30	30	30	30	20	20	20	20	20
50	90	70	60	70	50	40	40	30
100	90	110	110	110	90	70	80	80
380	400	480	480	410	360	350	370	320
60	40	70	60	40	40	50	60	90
90	80	130	80	50	70	130	130	130
330	320	350	280	250	240	260	250	240
20	20	20	20	10	10	20	10	10
420	470	450	440	410	420	400	430	380
430	300	390	400	330	260	290	310	260
70	110	100	100	70	60	60	60	70
40	50	40	40	50	40	30	30	30
880	840	850	760	500	400	390	460	470
190	210	190	230	180	180	170	150	160
270	250	280	280	260	240	230	210	190
2,780	2,690	2,860	2,690	2,140	1,950	2,020	2,100	2,020

Vacancies as % of employed								
Dec-06	Jun-07	Dec-07	Jun-08	Dec-08	Jun-09	Dec-09	Jun-10	Dec-10
4	2	4	4	3	2	3	3	3
5	5	8	5	4	5	11	11	11
6	6	7	5	5	4	5	5	5
4	4	4	4	2	2	4	2	2
5	6	5	6	5	5	5	6	5
11	5	7	5	6	4	6	4	6
3	4	3	3	3	2	2	2	3
8	10	7	7	9	7	4	7	4
8	7	7	6	4	3	3	4	4
8	8	7	8	6	6	7	5	6
5	5	5	5	4	4	5	3	3
7	6	6	5	5	4	4	4	4
-	-	6	1	-	4	-	3	22
7	3	11	6	-	5	6	5	6
4	4	7	3	3	7	6	3	3
-	-	-	33	-	-	-	-	-
5	5	4	4	4	4	4	4	2
6	5	13	14	9	5	8	9	6
4	3	6	5	3	3	3	2	3
-	-	-	-	13	10	11	-	-
3	3	3	3	2	2	2	2	2
4	6	5	4	4	3	2	3	2
6	5	7	6	6	5	4	4	4
5	5	6	5	5	4	4	4	4
4	2	4	3	3	2	3	3	6
6	5	9	5	4	5	10	10	10
6	6	7	5	5	5	5	5	5
4	4	4	4	2	2	4	2	2
5	6	5	5	5	5	5	5	4
10	5	8	7	7	4	6	5	6
3	4	4	4	3	2	2	2	3
8	10	8	7	9	7	6	6	5
7	7	6	6	4	3	3	4	4
6	7	6	7	5	5	5	4	4
6	5	6	5	5	4	4	4	4
6	6	6	5	5	4	4	4	4

Note: + means a non-zero number less than 5.

Appendix 3 - Residential Qualifications

(see Note 4 for definitions)

(all businesses, including one-person businesses)

	Dec-08				Jun-09				Dec-09				Jun-10				Dec-10			
	Locally Qualified	J- category	Non-locally Qualified	Total	Locally Qualified	J- category	Non-locally Qualified	Total	Locally Qualified	J- category	Non-locally Qualified	Total	Locally Qualified	J- category	Non-locally Qualified	Total	Locally Qualified	J- category	Non-locally Qualified	Total
Full-time staff																				
Agriculture and Fishing	940	+	420	1,360	1,000	+	980	1,980	950	+	390	1,340	980	+	920	1,900	940	+	370	1,310
Manufacturing	1,000	20	130	1,150	1,000	20	120	1,140	970	20	110	1,100	990	20	120	1,120	980	20	140	1,140
Construction and Quarrying	4,430	30	490	4,950	4,420	40	490	4,950	4,420	40	480	4,940	4,610	50	460	5,110	4,520	50	390	4,950
Electricity, Gas and Water	460	+	30	490	460	+	30	500	440	+	30	480	440	+	30	470	450	+	30	480
Wholesale and Retail Trades	5,480	60	1,040	6,580	5,400	60	920	6,380	5,480	60	980	6,520	5,490	60	870	6,420	5,650	50	940	6,640
Hotels, Restaurants & Bars	1,810	30	1,700	3,540	2,070	20	2,650	4,750	1,870	30	1,630	3,530	2,150	30	2,610	4,790	2,050	30	1,450	3,540
Transport, Storage & Communication	2,200	40	110	2,350	2,240	40	150	2,430	2,180	50	110	2,340	2,150	50	150	2,340	2,110	50	120	2,280
Computer and related activities	380	10	60	450	390	10	50	450	400	10	40	450	390	10	40	440	410	10	50	470
Financial and Legal Activities	10,290	740	1,230	12,250	10,130	740	1,210	12,070	9,890	760	1,110	11,760	9,900	750	1,020	11,680	9,870	720	1,000	11,590
Miscellaneous Business Activities	1,720	40	130	1,880	1,760	40	160	1,950	1,780	40	150	1,970	1,860	40	160	2,070	1,810	50	110	1,970
Education, Health and Other Services	2,860	140	380	3,390	2,910	140	430	3,490	2,950	140	390	3,480	3,000	140	400	3,550	2,940	140	360	3,440
Total full-time staff	31,560	1,120	5,710	38,400	31,780	1,120	7,190	40,090	31,340	1,150	5,420	37,910	31,960	1,160	6,770	39,900	31,710	1,120	4,970	37,810
Part-time staff																				
Agriculture and Fishing	180		10	180	200		30	230	180		+	180	250		90	340	200		30	230
Manufacturing	180		40	220	170		50	220	150		30	180	170		50	220	150		30	180
Construction and Quarrying	290		10	300	290		10	300	320		+	320	330		+	340	330		10	350
Electricity, Gas and Water	40		+	40	30		+	40	30		+	40	30		+	30	30		+	40
Wholesale and Retail Trades	1,690		140	1,830	1,900		180	2,080	2,020		170	2,200	1,940		180	2,120	1,900		160	2,060
Hotels, Restaurants & Bars	670		390	1,060	820		490	1,310	660		320	980	790		470	1,250	650		370	1,020
Transport, Storage & Communication	310		+	320	350		10	350	350		+	350	420		+	420	370		+	380
Computer and related activities	80		+	80	90		+	100	90		+	90	100		+	100	80		+	90
Financial and Legal Activities	1,160		20	1,180	1,160		20	1,170	1,100		20	1,120	1,070		20	1,100	1,060		20	1,080
Miscellaneous Business Activities	1,100		460	1,560	1,140		480	1,620	1,220		400	1,620	1,180		410	1,600	1,180		430	1,610
Education, Health and Other Services	1,660		80	1,740	1,840		100	1,940	1,720		80	1,800	1,810		90	1,900	1,780		80	1,850
Total part-time staff	7,340		1,160	8,510	7,990		1,370	9,350	7,840		1,030	8,870	8,090		1,330	9,410	7,740		1,140	8,880
All staff																				
Agriculture and Fishing	1,120	+	420	1,540	1,200	+	1,010	2,210	1,130	+	390	1,520	1,220	+	1,020	2,240	1,130	+	400	1,530
Manufacturing	1,170	20	170	1,370	1,170	20	180	1,360	1,130	20	140	1,280	1,160	20	170	1,350	1,130	20	180	1,320
Construction and Quarrying	4,720	30	500	5,250	4,710	40	500	5,240	4,740	40	480	5,270	4,940	50	460	5,450	4,850	50	400	5,300
Electricity, Gas and Water	490	+	30	530	490	+	40	530	470	+	30	510	470	+	40	510	480	+	40	520
Wholesale and Retail Trades	7,170	60	1,170	8,410	7,300	60	1,100	8,460	7,510	60	1,160	8,720	7,430	60	1,040	8,540	7,550	50	1,090	8,690
Hotels, Restaurants & Bars	2,480	30	2,100	4,600	2,900	20	3,140	6,060	2,530	30	1,950	4,510	2,940	30	3,070	6,040	2,700	30	1,830	4,560
Transport, Storage & Communication	2,510	40	120	2,670	2,590	40	160	2,790	2,530	50	110	2,690	2,570	50	150	2,770	2,480	50	120	2,660
Computer and related activities	460	10	60	540	490	10	50	550	490	10	40	540	490	10	40	540	490	10	50	560
Financial and Legal Activities	11,450	740	1,250	13,430	11,280	740	1,220	13,250	11,000	760	1,120	12,880	10,970	750	1,040	12,770	10,930	720	1,020	12,680
Miscellaneous Business Activities	2,810	40	590	3,440	2,900	40	630	3,570	3,000	40	550	3,590	3,050	40	570	3,660	2,980	50	550	3,580
Education, Health and Other Services	4,520	140	470	5,130	4,750	140	530	5,420	4,670	140	470	5,270	4,810	140	500	5,450	4,710	140	440	5,290
Total staff	38,910	1,120	6,880	46,910	39,770	1,120	8,560	49,440	39,190	1,150	6,440	46,780	40,040	1,160	8,100	49,310	39,450	1,120	6,120	46,690

Notes: j-category employees are employed on a full-time basis only;

 means a non-zero number less than 5.

+