

## Registered Actively Seeking Work May 2014

Statistics Unit: [www.gov.je/statistics](http://www.gov.je/statistics)

### Summary

On 31 May 2014:

- on a **seasonally adjusted**<sup>1</sup> basis, the total number of people registered as actively seeking work (ASW) in Jersey was<sup>2</sup>:
  - 10 lower than a month earlier, April 2014;
  - 60 lower than the average for the preceding three months;
- the seasonally adjusted ASW total was the lowest for more than two years (December 2011);
- the **non-seasonally adjusted ASW total** was 1,530; this latest total is 80 lower than in the previous month (April 2014) and the lowest ASW total recorded for more than two years, since November 2011;
- **long-term ASW** (registered for more than twelve months) accounted for almost a fifth of total ASW; the number of long-term ASW (290 individuals) was 10 lower than the previous month (April 2014), recording the lowest number since September 2012;
- 170 **teenagers aged 16-19 years** were registered as ASW, 40 fewer than the previous month and the lowest number recorded for this age group for five years, since May 2009; 70 teenagers were on the Advance to Work scheme.

### Introduction

Data on people registered as actively seeking work in Jersey is compiled and administered by the Social Security Department. The Statistics Unit independently analyses this anonymised data and publishes a monthly report<sup>3</sup>.

When interpreting the numbers presented, it should be kept in mind that there is no legal requirement for all unemployed residents of Jersey to register as actively seeking work (ASW) with the Social Security Department. The numbers shown constitute an informative set of indicators of the level of individuals actively seeking work in the Island at a given point in time.

The internationally comparable unemployment rate (as defined by the International Labour Organisation, ILO) includes people who are registered and also those who are not registered as unemployed and seeking work. The ILO unemployment rate for Jersey is measured by the Annual Social Survey and the Census; in recent years, the ILO unemployment rate for Jersey has been:

- 4.7% in March 2011, measured by the 2011 Jersey Census; this unemployment rate corresponded to 2,570 people being unemployed and looking for work in March 2011;
- 5.7% in June 2013, measured by the 2013 Jersey Annual Social Survey; this unemployment rate corresponded to 3,200 people being unemployed and looking for work in June 2013.

<sup>1</sup> Seasonal adjustment is a statistical technique which enables examination of the underlying behaviour in a series of data by removing variations associated with the time of year, e.g. Christmas, Easter, academic year.

<sup>2</sup> ASW numbers presented in this report are rounded independently to the nearest 10.

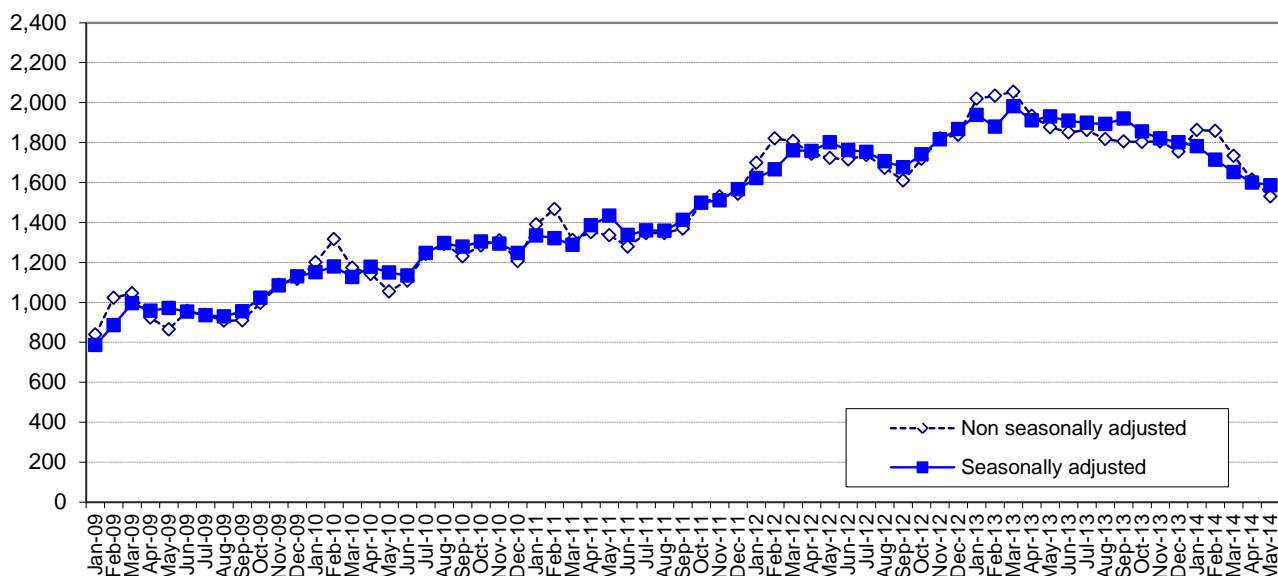
<sup>3</sup> Up until March 2014 the end-of-month ASW figures published by the Statistics Unit were based on administrative data compiled by the Social Security Department on (or close to) the 15<sup>th</sup> of the following month. From the April 2014 report onwards the end-of-month figures published are based on data compiled on (or close to) the 1<sup>st</sup> of the following month. Moving the data compilation date forward by two weeks will enable earlier publication of the monthly figures. It should be noted that the earlier data compilation date introduces a small upward systematic shift (of approximately 20) in the number of people classified as ASW at each end-of-month.

## Registered Actively Seeking Work

On 31 May 2014, 1,530 people were registered with the Social Security Department as actively seeking work (ASW). Three-quarters (75%) of individuals registered as ASW on this date (corresponding to 1,140 people) were receiving Income Support<sup>4</sup>.

Figure 1 shows the total number of people registered as ASW at the end of each month since January 2009 (monthly data are shown in Appendix Table A1). The total number registered in May 2014 was 80 lower than in the previous month (April 2014); 350 lower than a year earlier (May 2013); and the lowest total recorded for more than two years, since November 2011.

**Figure 1 – Total number of individuals registered as ASW, Jan 2009 – May 2014**



The seasonally adjusted series of the total registered as ASW, in which seasonal and calendar effects are removed, is also shown on Figure 1. From this perspective, the total number of people registered as ASW in Jersey in May 2014 was:

- 10 lower than a month earlier, April 2014;
- 60 lower than the mean for the preceding three-month period, February 2014 to April 2014.

The seasonally adjusted ASW total in May 2014 was the lowest for more than two years, since December 2011.

## Registered ASW by age

On 31 May 2014, over a fifth (22%) of people registered as ASW were under the age of 25 years; one in nine (11%) of the total were teenagers aged 16-19 years.

Figure 2 shows the numbers registered as ASW by age of individuals in each of the last five months, from January 2014 to May 2014.

In the latest month most age categories recorded decreases in the number of people registered as ASW compared with the previous month; teenagers saw the largest decrease in the number of people registered as ASW (down by 30), recording the lowest number for this age group for five years, since May 2009.

<sup>4</sup> The total number of adults receiving Income Support and not working will be greater than this figure, which represents the number of people receiving Income Support who were registered as ASW on 31 May 2014.

**Figure 2 – Individuals registered as ASW by age, Jan 2014 – May 2014**

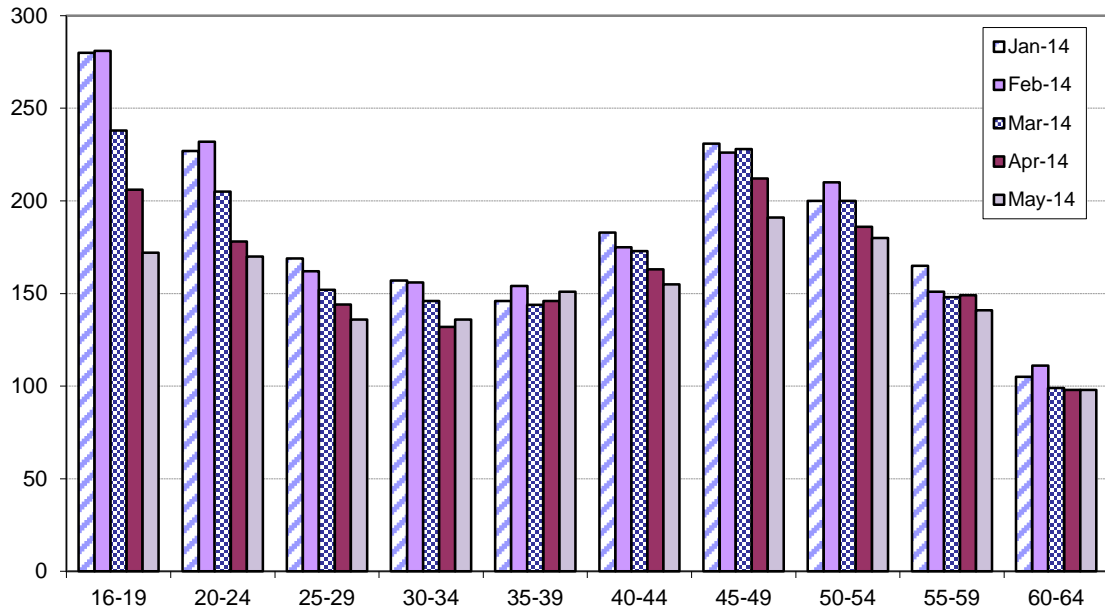
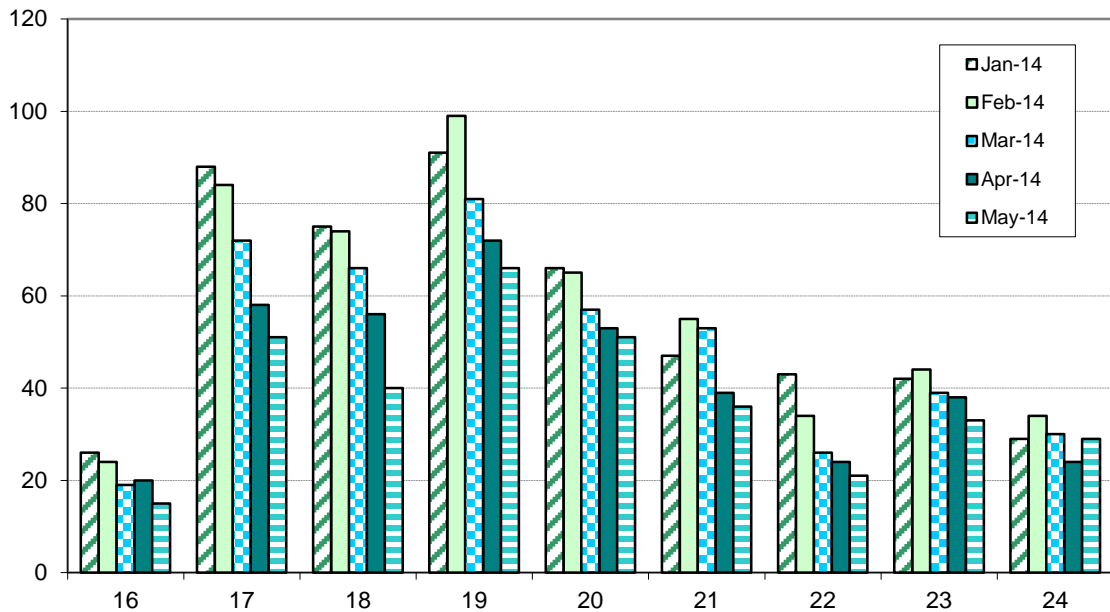


Figure 3 shows the age distribution for people under 25 years of age who were registered as ASW in the latest five months, from January 2014 to May 2014.

Of the 170 teenagers (aged 16-19 years) registered as ASW at the end of May 2014, 70 were on the Advance to Work scheme, 30 fewer than at the end of the previous month (April 2014).

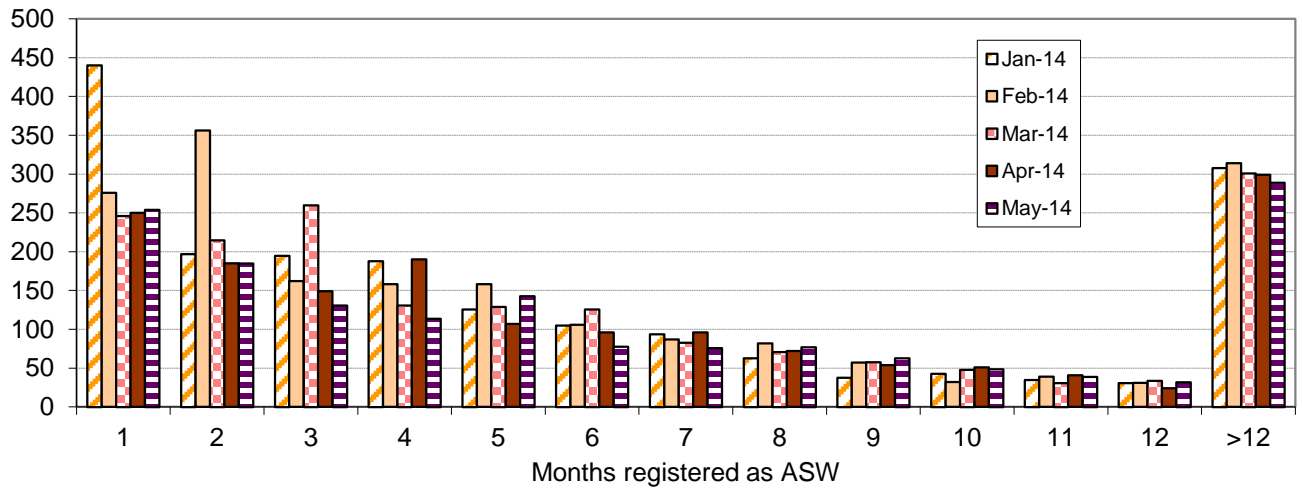
**Figure 3 – Individuals under the age of 25 registered as ASW, Jan 2014 – May 2014**



### Duration as ASW

Almost two-fifths (37%) of all people registered as ASW on 31 May 2014 had been registered for three months or less – see Figure 4.

**Figure 4 – Registered ASW by length of period registered (months), Jan 2014 – May 2014**



250 people had registered as ASW in the latest month, a similar number as in April 2014. The latest number of new registrants was 20 fewer than in the corresponding month of the previous year, May 2013, and 40 fewer than in May 2012.

### Long-term ASW

On 31 May 2014, there were 290 people who had been registered as ASW for more than twelve months, accounting for almost a fifth (19%) of total ASW.

The latest number of long-term ASW was 10 fewer than the previous month (April 2014), recording the lowest number for over a year and a half (since September 2012) - see Figure 5.

**Figure 5 – Long-term ASW, September 2009 – May 2014**

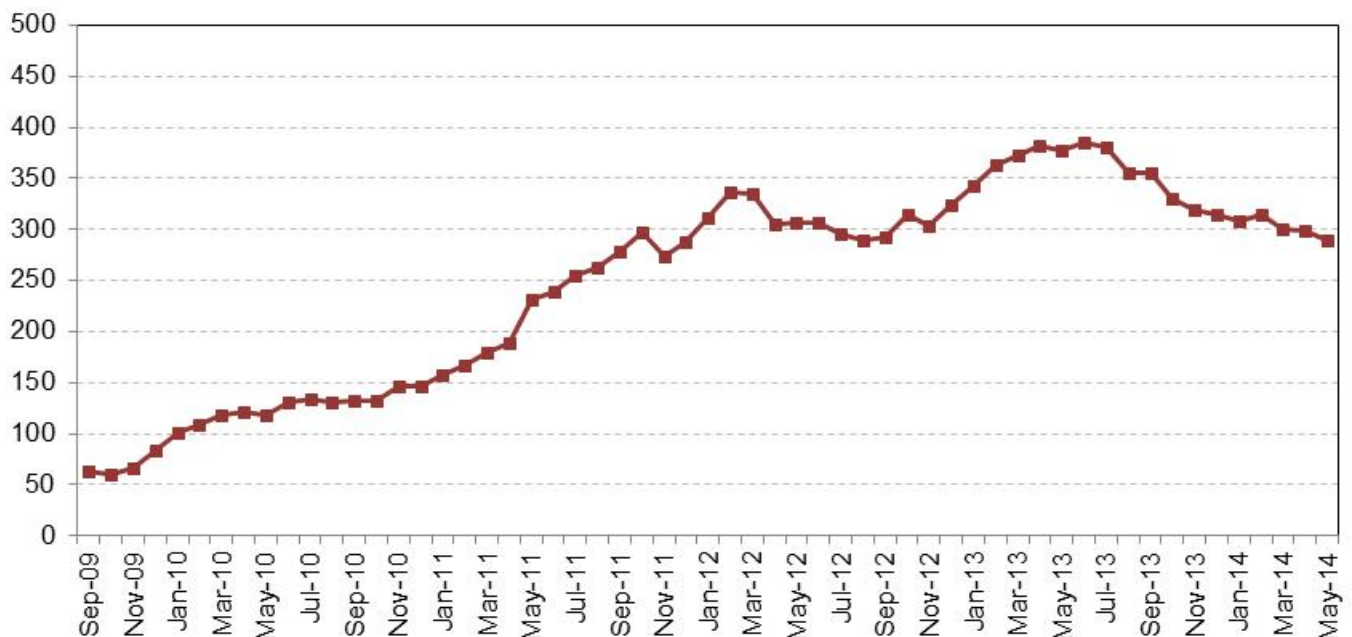
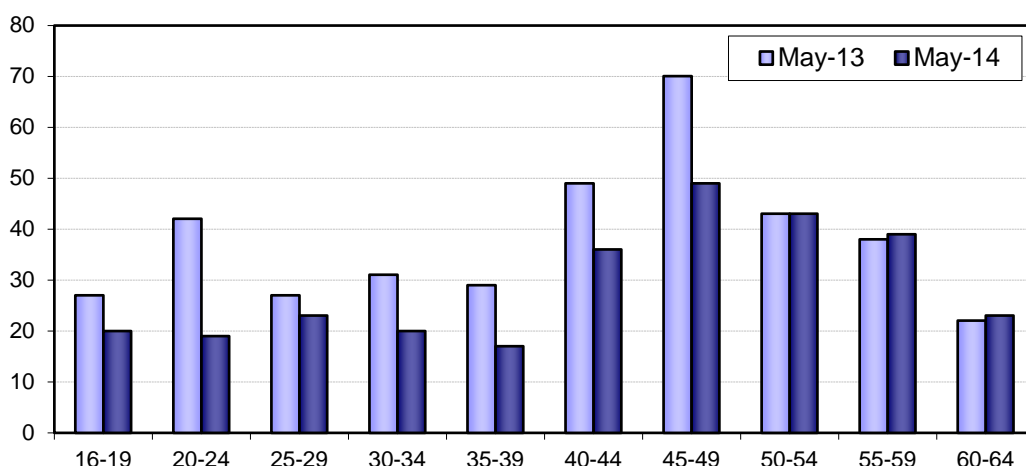


Figure 6 shows the age distribution of the long-term ASW in May 2014.

**Figure 6 – Long-term ASW by age, May 2013 and May 2014**

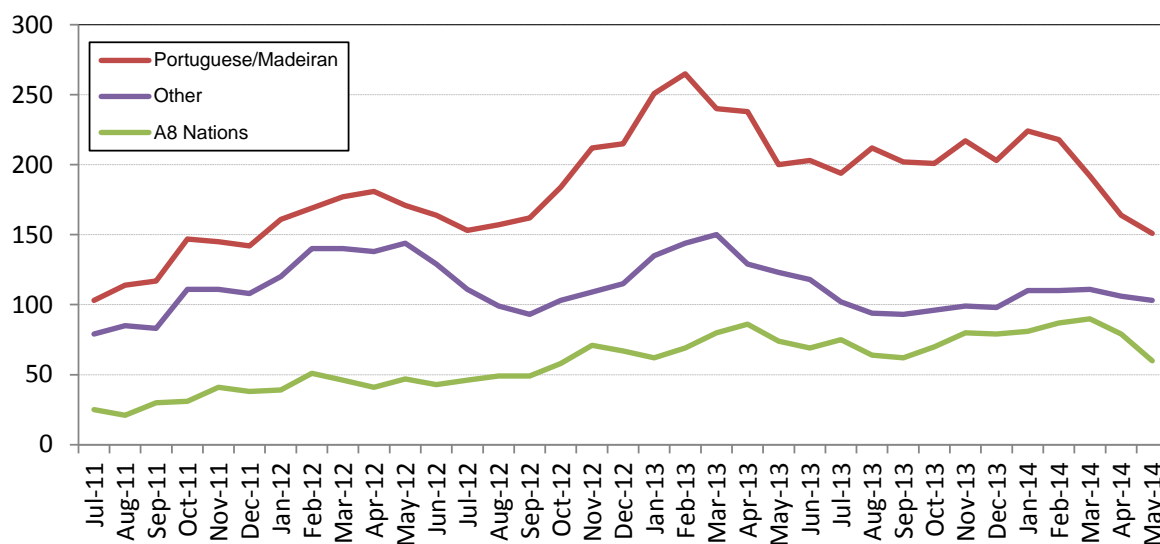


In May 2014 there were 40 people under 25 years of age who had been registered as ASW for more than a year, accounting for an eight (13%) of the total long-term ASW. Over the last year, since May 2013, there has been a decrease in the number of long-term ASW under 50 years of age; in contrast, the number aged 50 years or over has increased slightly.

### Registered ASW by Nationality

On 31 May 2014, almost four-fifths (79%) of all people registered as ASW were of British/Jersey nationality<sup>5</sup>. The number of individuals registered as ASW for nationalities other than British/Jersey since mid-2011 is shown in Figure 7.

**Figure 7 – Individuals registered as ASW by nationality, Jul 2011 – May 2014**



On 31 May 2014 there were:

- 150 individuals of Portuguese/Madeiran nationality registered as ASW, 10 fewer than the previous month (April 2014), 50 fewer than the corresponding month of 2013 and the lowest number recorded for this group since July 2012;
- 60 individuals from the EU Accession (A8)<sup>6</sup> nations were registered as ASW, 20 fewer than the previous month (April 2014) and 10 fewer than the corresponding month of 2013.

<sup>5</sup> Nationality recorded by the Social Security Department for the purpose of registering as ASW is self-reported.

<sup>6</sup> The eight countries which joined ("gained accession to") the European Union in May 2004 were: the Czech Republic, Estonia, Hungary, Latvia, Lithuania, Poland, Slovakia and Slovenia.

## Industry

Individuals working in some industries of the economy, notably in the Finance sector, often seek employment through private agencies and do not register with the Social Security Department. Such industries will, therefore, tend to be under-represented in the ASW numbers.

The last industry of employment was recorded for around nine out of ten people registered as ASW on 31 May 2014:

- one in five (20%) were previously employed in 'Retail and Wholesale, Motor repairs and sales';
- one in six (17%) were previously employed in 'Miscellaneous professional & domestic services';
- one in nine (11%) were previously employed in 'Hotels, restaurants, pubs and clubs';
- fewer than one in ten (8%) were previously employed in 'Construction and allied trades'.

## Notes

The numbers of people registered as ASW include people who are on the Advance to Work, Advance Plus and Workwise schemes. The ASW total will also include individuals who are working fewer than the 35 hours per week required under the terms of Income support (see Annex); such individuals will simultaneously be working and actively seeking work.

When placing the figures contained in this report in a longer term historical context it should be recognised that there have been significant changes in the criteria relating to registered ASW in Jersey in recent years. In particular, the introduction of Income Support in 2008 led to greater numbers of individuals who were actively seeking work being included in the registered figures.

People who are registered as actively seeking work receive the support of one of the government employment schemes which come under the administration of Back to Work. They are:

- Advance to Work – for jobseekers aged 16 – 19 years;
- Advance Plus – for jobseekers with an industry-specific interest aged 20 – 65 years;
- Workwise – for jobseekers with special employment needs;
- Work Zone – for all registered jobseekers.

In addition to the development and expansion of these schemes, Back to Work is responsible for:

- the Employment Grant;
- a dedicated Employer Engagement team;
- the Long Term Unemployment Programme;
- industry and employer specific initiatives.

The aim of Back to Work is to increase access to job opportunities for locally qualified people who are registered as actively seeking work by supporting jobseekers and building a partnership with employers to provide sustainable job opportunities.

*Statistics Unit  
25 June 2014*

## ASW registered underemployment

Individuals who are working fewer hours than they would like or who would like to change their current working situation are classified as underemployed. The International Labour Organisation (ILO) provides two definitions of underemployment<sup>7</sup>:

- *time related underemployed*, which is due to insufficient hours of work;
- *inadequate employment situations*, which are due to other limitations in the labour market which limit the capacities and well-being of workers.

In Jersey, individuals who are in receipt of Income Support are required to work at least 35 hours per week, unless exempt from full-time work; those who do not meet this requirement must register as Actively Seeking Work. Hence, the ASW total figure includes individuals who are working less than the 35 hours per week required under the terms of Income support; such individuals will simultaneously be working and actively seeking work, and are classified as underemployed under the ILO definition of *time related underemployment*.

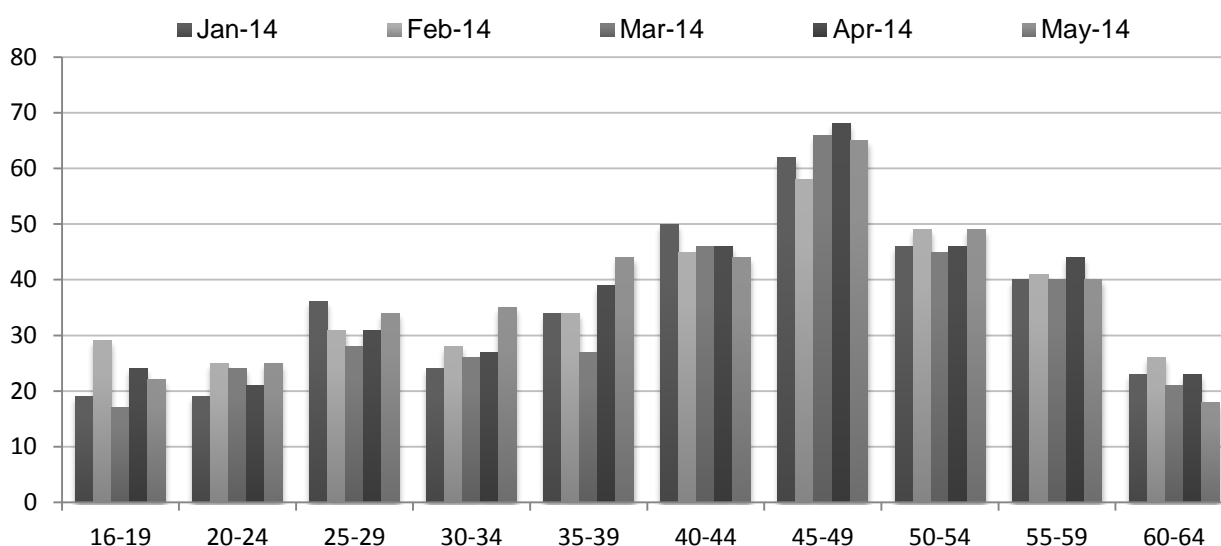
In May 2014, almost a quarter (23%) of all people registered as ASW were underemployed; that is, they were working less than 35 hours per week and were actively seeking more work. The numbers of such individuals in each month from May 2013 to May 2014 are shown in Table A1.

**Table A1 – Number of ASW registered underemployed, May 2013 – May 2014**

	May-13	Jun-13	Jul-13	Aug-13	Sept-13	Oct-13	Nov-13	Dec-13	Jan-14	Feb-14	Mar-14	Apr-14	May-14
Number of underemployed	320	320	350	360	350	360	380	370	350	370	340	370	380
Percentage of total ASW	17%	17%	19%	20%	19%	20%	21%	21%	19%	20%	20%	23%	25%

Figure A1 shows the age distribution of people registered as ASW underemployed; one in eight were below the age of 25, whilst almost three-fifths were over the age of 40.

**Figure A1 - Age distribution of ASW registered underemployed, Jan 2014 – May 2014**



Of those people who were registered as ASW underemployed in May 2014:

- almost two-thirds (65%) were female;
- over a third (34%) had been actively seeking work for more than a year;
- nine out of ten (90%) were claiming Income Support.

<sup>7</sup> International Labour Organisation: *Resolution concerning the measurement of underemployment and inadequate employment situations*.



## Appendix

### Number of individuals registered as ASW, Apr 2009 – May 2014<sup>8</sup>

		Male	Female	Total	Seasonally adjusted total
<b>2009</b>	Apr	620	300	920	960
	May	560	300	870	970
	Jun	630	330	960	950
	Jul	620	320	940	940
	Aug	580	320	910	930
	Sep	580	330	910	960
	Oct	650	350	1,000	1,020
	Nov	700	390	1,090	1,090
	Dec	700	420	1,120	1,130
	<b>2010</b>	Jan	770	440	1,200
Feb		810	510	1,320	1,180
Mar		720	450	1,170	1,130
Apr		710	430	1,140	1,180
May		670	390	1,060	1,150
Jun		690	420	1,110	1,130
Jul		760	490	1,240	1,250
Aug		810	490	1,290	1,300
Sep		770	460	1,230	1,280
Oct		840	450	1,290	1,300
Nov		870	440	1,310	1,290
Dec		800	410	1,210	1,250
<b>2011</b>	Jan	910	480	1,390	1,330
	Feb	960	510	1,470	1,320
	Mar	850	460	1,310	1,290
	Apr	870	490	1,350	1,390
	May	820	520	1,340	1,430
	Jun	780	500	1,280	1,340
	Jul	800	550	1,350	1,360
	Aug	820	530	1,350	1,360
	Sep	850	520	1,370	1,410
	Oct	920	570	1,500	1,500

		Male	Female	Total	Seasonally adjusted total
	Nov	960	580	1,530	1,510
	Dec	960	580	1,540	1,570
<b>2012</b>	Jan	1,050	650	1,700	1,620
	Feb	1,130	690	1,820	1,670
	Mar	1,100	700	1,810	1,760
	Apr	1,060	680	1,740	1,760
	May	1,040	680	1,720	1,800
	Jun	1,020	700	1,720	1,760
	Jul	1,020	720	1,740	1,750
	Aug	1,020	650	1,670	1,710
	Sep	970	650	1,610	1,680
	Oct	1,020	700	1,720	1,740
	Nov	1,090	730	1,820	1,820
	Dec	1,100	740	1,840	1,870
<b>2013</b>	Jan	1,210	810	2,020	1,940
	Feb	1,210	820	2,030	1,880
	Mar	1,230	820	2,050	1,980
	Apr	1,140	800	1,930	1,910
	May	1,080	800	1,880	1,930
	Jun	1,040	810	1,850	1,910
	Jul	1,030	840	1,860	1,900
	Aug	990	820	1,820	1,890
	Sept	1,000	800	1,810	1,920
	Oct	1,040	770	1,800	1,860
	Nov	1,060	750	1,810	1,820
	Dec	1,030	720	1,750	1,800
<b>2014</b>	Jan	1,090	770	1,860	1,780
	Feb	1,080	780	1,860	1,710
	Mar	980	760	1,730	1,650
	Apr	900	720	1,610	1,600
	May	840	700	1,530	1,590

<sup>8</sup> Numbers are rounded independently to the nearest 10; hence components may not sum to totals.