

## Registered Actively Seeking Work November 2013

Statistics Unit: [www.gov.je/statistics](http://www.gov.je/statistics)

### Summary

On 30 November 2013:

- on a **seasonally adjusted**<sup>1</sup> basis, the total number of people registered as actively seeking work (ASW) in Jersey was<sup>2</sup>:
  - 40 lower than a month earlier, in October 2013;
  - 70 lower than the average for the preceding three months;
- the **non-seasonally adjusted ASW total** was 1,810; this latest monthly total is:
  - at a similar level to a month earlier (10 higher than in October 2013);
  - at a similar level to that recorded in each of the three previous months (August to October 2013) and to that of a year earlier (November 2012);
- **long-term ASW** (registered for more than twelve months) accounted for 18% of total ASW; the number of long-term ASW (320 individuals) was the lowest for twelve months;
- 300 **teenagers aged 16-19 years** were registered as ASW, 20 fewer than in the previous month; 150 teenagers were on the Advance to Work scheme.

### Introduction

Data on people registered as actively seeking work in Jersey is compiled and administered by the Social Security Department. The Statistics Unit independently analyses this anonymised data and publishes a monthly report.

When interpreting the numbers presented, it should be kept in mind that there is no legal requirement for all unemployed residents of Jersey to register as actively seeking work (ASW) with the Social Security Department. The numbers shown constitute an informative set of indicators of the level of individuals actively seeking work in the Island at a given point in time<sup>3</sup>.

The internationally comparable unemployment rate (as defined by the International Labour Organisation, ILO) includes people who are registered and also those who are not registered as unemployed and seeking work. The ILO unemployment rate for Jersey is measured through the Annual Social Survey and the Census; in recent years, the ILO unemployment rate for Jersey has been:

- 4.7% in March 2011, measured by the 2011 Jersey Census; this unemployment rate corresponded to 2,570 people being unemployed and looking for work in March 2011;
- 5.7% in June 2013, measured by the 2013 Jersey Annual Social Survey; this unemployment rate corresponded to 3,200 people being unemployed and looking for work in June 2013.

<sup>1</sup> Seasonal adjustment is a statistical technique which enables examination of the underlying behaviour in a series of data by removing variations associated with the time of year, e.g. Christmas, Easter, academic year.

<sup>2</sup> ASW numbers presented in this report are rounded independently to the nearest 10.

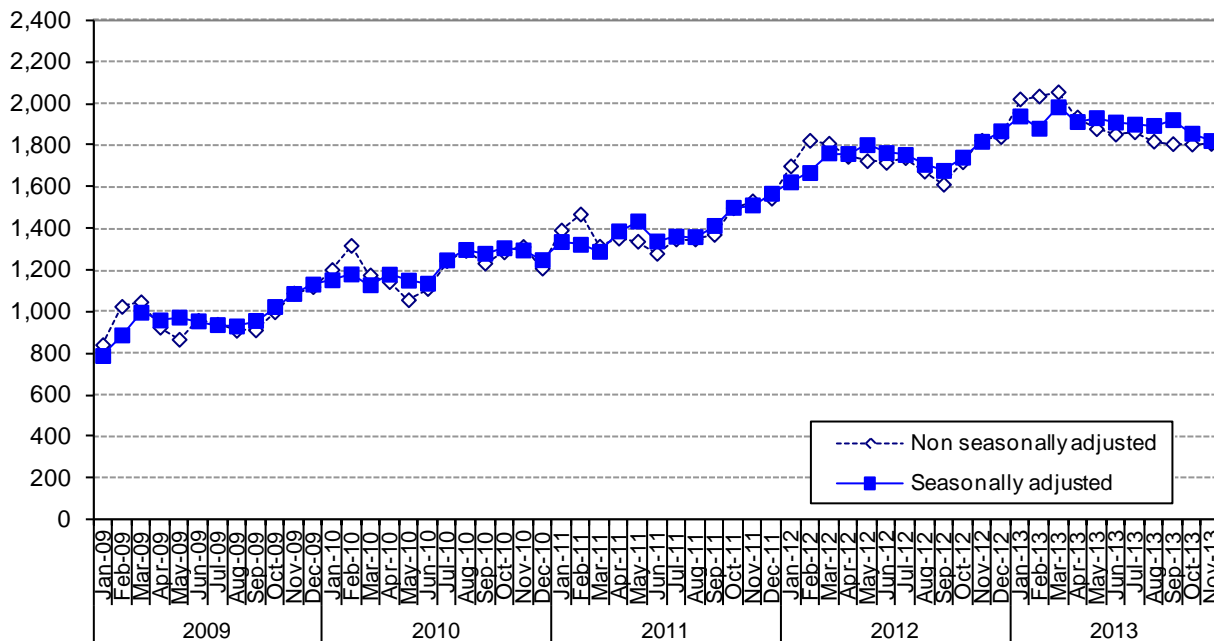
<sup>3</sup> When placing the figures contained in this report in a historical context, it should be recognised that there have been significant changes in the criteria relating to registered ASW in Jersey in recent years. In particular, the introduction of Income Support in 2008 has led to a higher proportion of individuals who were actively seeking work being included in the registered figures.

## Registered Actively Seeking Work

On 30 November 2013, 1,810 people were registered with the Social Security Department as actively seeking work (ASW). Seven out of ten (1,260 individuals) registered as ASW on this date were receiving Income Support<sup>4</sup>.

Figure 1 shows the total number of people registered as ASW at the end of each month since January 2009 (monthly data are shown in Appendix Table A1). The total number registered in November 2013 was: 10 higher than a month earlier (October 2013); at a similar level to that recorded in each of the three previous months (August to October 2013); at a similar level to that of a year earlier (November 2012); almost double that of four years ago (November 2009).

**Figure 1 – Total number of individuals registered as ASW, Jan 2009 – Nov 2013**



The seasonally adjusted series of the total registered as ASW, in which seasonal and calendar effects are removed, is also shown on Figure 1. From this perspective, the total number of people registered as ASW in Jersey in November 2013 was:

- 40 lower than a month earlier, in October 2013;
- 70 lower than the mean for the preceding three-month period, August to October 2013.

## Registered ASW by age

On 30 November 2013, almost one in three (30%) people registered as ASW were under the age of 25 years; one in six (16%) of the total were teenagers aged 16-19 years.

Figure 2 shows the numbers registered as ASW by age of individuals in each of the last five months, from July 2013 to November 2013.

In the latest month, those aged between 25 and 34 year of age recorded increases between 10 and 20 in the number of people registered as ASW compared with the previous month. In contrast, most other age groups either remained essentially unchanged (with differences of less than 10) or, in the case of those aged 16-19 years, a decrease of 20 compared with the previous month.

<sup>4</sup> The total number of adults receiving Income Support and not working will be greater than this figure, which represents the number of people receiving Income Support who were registered as ASW on 30 September 2013.

**Figure 2 – Individuals registered as ASW by age, July 2013 – Nov 2013**

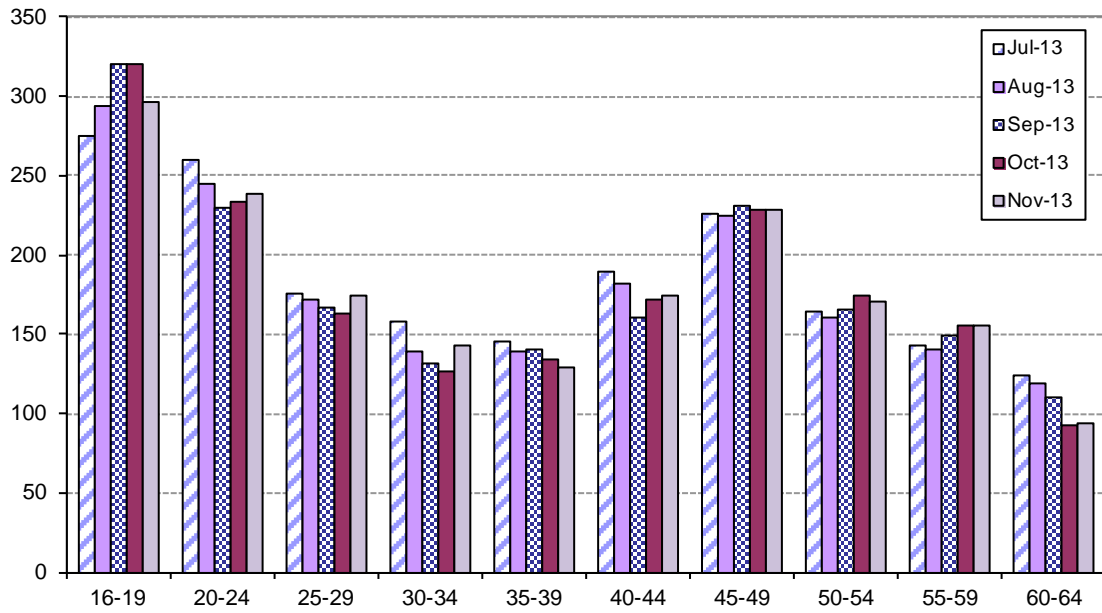
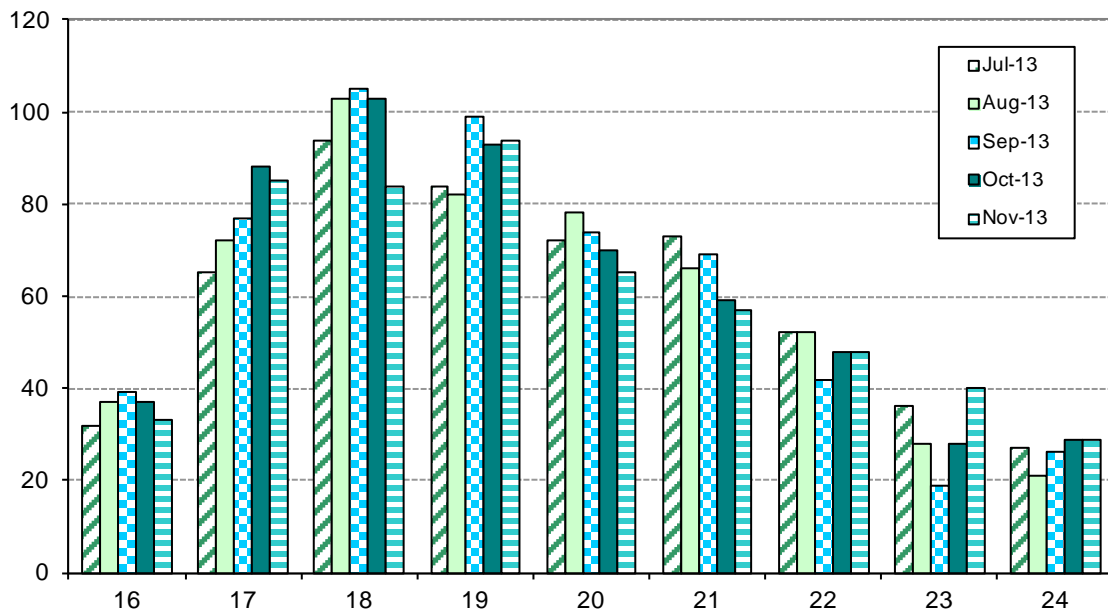


Figure 3 shows the age distribution for people under 25 years of age who were registered as ASW in the latest five months, from July 2013 to November 2013. Of the 300 teenagers (aged 16-19 years) who were registered as ASW at the end of November 2013, 150 were on the Advance to Work scheme, a similar number to that at the end of the previous month (October 2013).

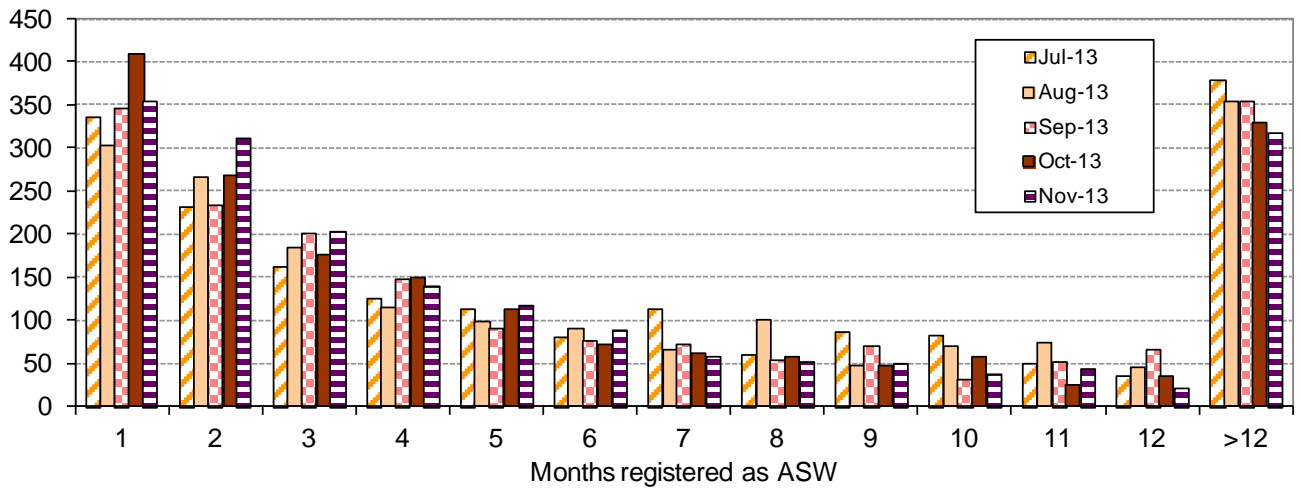
**Figure 3 – Individuals under the age of 25 registered as ASW, July 2013 – Nov 2013**



### Duration as ASW

Almost half (48%) of all people registered as ASW on 30 November 2013 had been registered for three months or less – see Figure 4.

**Figure 4 – Registered ASW by length of period registered (months), July 2013 – Nov 2013**



360 people had registered as ASW in the latest month, some 50 lower than in October 2013. The latest number of new registrants was 60 lower than in the corresponding month of the previous year, November 2012, and 80 more than in November 2011.

### Long-term ASW

On 30 November 2013, there were 320 people who had been registered as ASW for more than twelve months, accounting for 18% of total ASW.

The latest number of long-term ASW is the lowest recorded for twelve months, since November 2012 (see Figure 5).

**Figure 5 – Long-term ASW, Apr 2009 – November 2013**

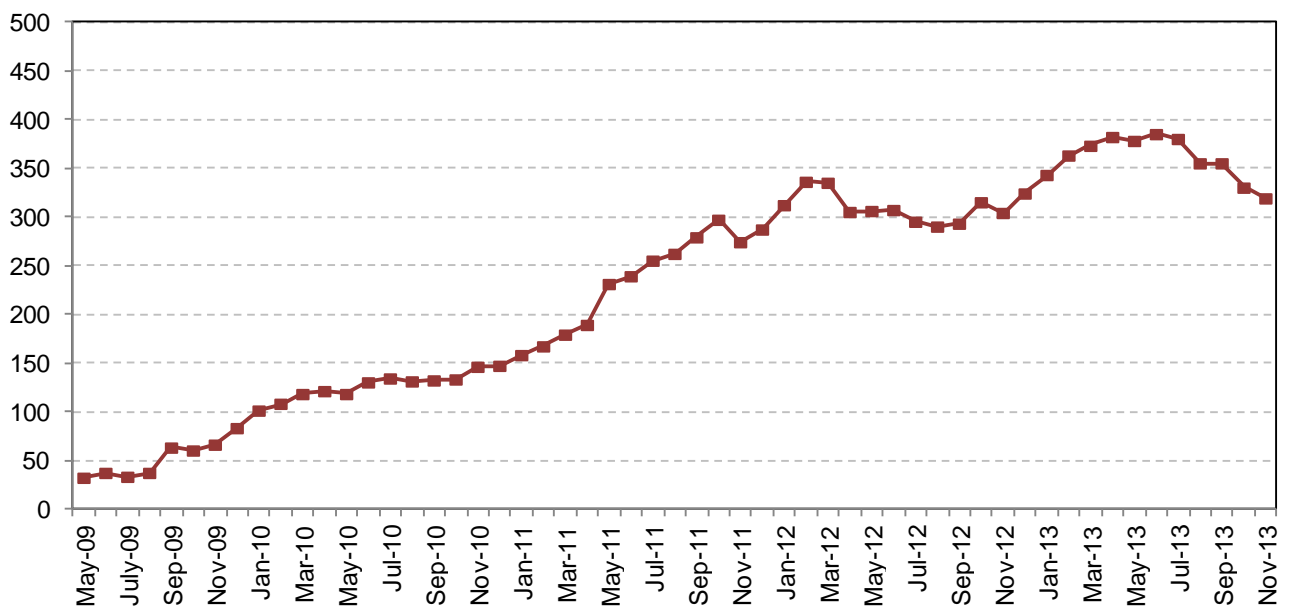
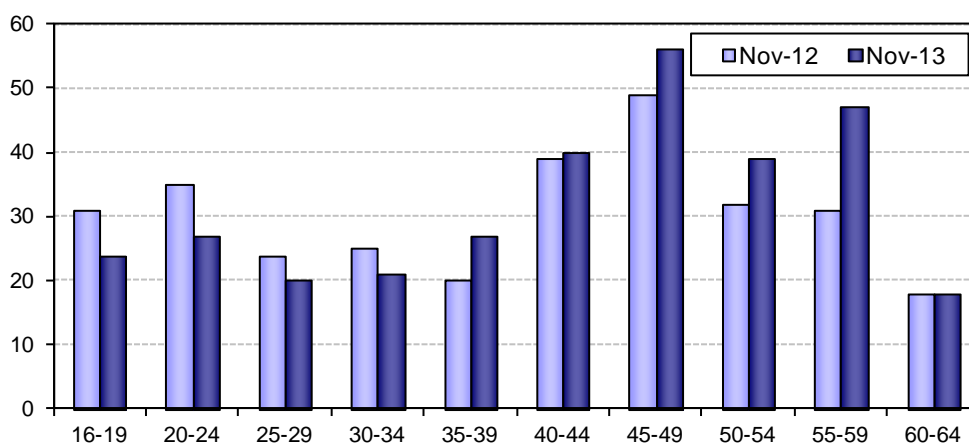


Figure 6 shows the age distribution of the long-term ASW in November 2013.

**Figure 6 – Long-term ASW by age, Nov 2012 and Nov 2013**

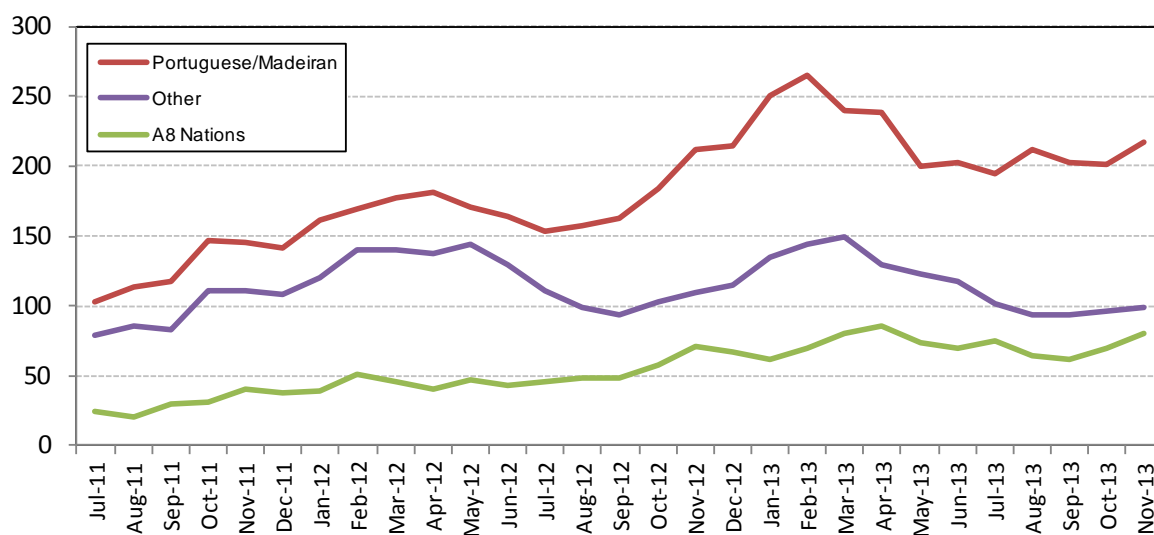


In November 2013 there were 50 people under 25 years of age who had been registered as ASW for more than a year, accounting for a sixth (16%) of the total long-term ASW. Over the last year, since November 2012, there has been a decrease in the number of long-term unemployed under 35 years of age but an increase in the number of long-term unemployed aged 35 or above

### Registered ASW by Nationality

On 30 November 2013, almost four-fifths (78%) of all people registered as ASW were of British/Jersey nationality<sup>5</sup>. The number of individuals registered as ASW for nationalities other than British/Jersey over the last two years is shown in Figure 7.

**Figure 7 – Individuals registered as ASW by nationality, July 2011 – Nov 2013**



In November 2013 there were 220 individuals of Portuguese/Madeiran nationality registered as ASW, the highest number seen since April 2013, and a similar level to a year earlier (November 2012).

There were 80 individuals from the EU Accession (A8)<sup>6</sup> nations who were registered as ASW in November 2013, the highest number recorded since April 2013.

<sup>5</sup> Nationality recorded by the Social Security Department for the purpose of registering as ASW is self-reported.

<sup>6</sup> The eight countries which joined ("gained accession to") the European Union in May 2004 were: the Czech Republic, Estonia, Hungary, Latvia, Lithuania, Poland, Slovakia and Slovenia.

## Industry

Individuals working in some industries of the economy, notably in the Finance sector, often seek employment through private agencies and do not register with the Social Security Department. Such industries will, therefore, tend to be under-represented in the ASW numbers.

The last industry of employment was recorded for almost nine out of ten people registered as ASW in November 2013:

- almost one in five were previously employed in 'Miscellaneous professional and domestic services' (18%) or in 'Retail and Wholesale, Motor repairs and sales' (18%);
- around one in nine were previously employed in 'Construction and allied trades' (11%).
- around one in six were previously employed in 'Hotels, restaurants, pubs and clubs' (16%).

## Notes

The numbers of people registered as ASW include people who are on the Advance to Work, Advance Plus and Workwise schemes. The ASW figure will also include individuals who are working less than the 35 hours a week required under the terms of Income support; such individuals will be working and actively seeking working simultaneously.

People who are registered as actively seeking work receive the support of one of the government employment schemes which come under the administration of Back to Work. They are:

- Advance to Work – for jobseekers aged 16 – 19 years;
- Advance Plus – for jobseekers with an industry-specific interest aged 20 – 65 years;
- Workwise – for jobseekers with special employment needs;
- Work Zone – for all registered jobseekers.

In addition to the development and expansion of these schemes, Back to Work is responsible for:

- the Employment Grant;
- a dedicated Employer Engagement team;
- the Long Term Unemployment Programme;
- industry and employer specific initiatives.

A new eight week initiative ('JobsFest') was also launched by Back to Work in October 2013. JobsFest included an Employer Incentive which enabled employers to hire locally qualified jobseekers who had not worked during 2013, at no financial cost to their business. This incentive concluded on 30 November 2013.

The aim of Back to Work is to increase access to job opportunities for locally qualified people who are registered as actively seeking work by supporting jobseekers and building a partnership with employers to provide sustainable job opportunities.

## Appendix

Table A1: Number of individuals registered as ASW, Jan 2009 – Nov 2013<sup>7</sup>

		Male	Female	Total	Seasonally adjusted total
<b>2009</b>	Jan	570	270	840	790
	Feb	700	320	1,020	890
	Mar	720	330	1,050	1,000
	Apr	620	300	920	960
	May	560	300	870	970
	Jun	630	330	960	950
	Jul	620	320	940	940
	Aug	580	320	910	930
	Sep	580	330	910	960
	Oct	650	350	1,000	1,020
	Nov	700	390	1,090	1,090
	Dec	700	420	1,120	1,130
<b>2010</b>	Jan	770	440	1,200	1,150
	Feb	810	510	1,320	1,180
	Mar	720	450	1,170	1,130
	Apr	710	430	1,140	1,180
	May	670	390	1,060	1,150
	Jun	690	420	1,110	1,130
	Jul	760	490	1,240	1,250
	Aug	810	490	1,290	1,300
	Sep	770	460	1,230	1,280
	Oct	840	450	1,290	1,300
	Nov	870	440	1,310	1,290
	Dec	800	410	1,210	1,250
<b>2011</b>	Jan	910	480	1,390	1,330
	Feb	960	510	1,470	1,320
	Mar	850	460	1,310	1,290
	Apr	870	490	1,350	1,390
	May	820	520	1,340	1,430

		Male	Female	Total	Seasonally adjusted total	
<b>2011</b>	Jun	780	500	1,280	1,340	
	Jul	800	550	1,350	1,360	
	Aug	820	530	1,350	1,360	
	Sep	850	520	1,370	1,410	
	Oct	920	570	1,500	1,500	
	Nov	960	580	1,530	1,510	
	Dec	960	580	1,540	1,570	
	<b>2012</b>	Jan	1,050	650	1,700	1,620
		Feb	1,130	690	1,820	1,670
		Mar	1,100	700	1,810	1,760
		Apr	1,060	680	1,740	1,760
		May	1,040	680	1,720	1,800
Jun		1,020	700	1,720	1,760	
Jul		1,020	720	1,740	1,750	
Aug		1,020	650	1,670	1,710	
Sep		970	650	1,610	1,680	
Oct		1,020	700	1,720	1,740	
Nov		1,090	730	1,820	1,820	
Dec		1,100	740	1,840	1,870	
<b>2013</b>	Jan	1,210	810	2,020	1,940	
	Feb	1,210	820	2,030	1,880	
	Mar	1,230	820	2,050	1,980	
	Apr	1,140	800	1,930	1,910	
	May	1,080	800	1,880	1,930	
	Jun	1,040	810	1,850	1,910	
	Jul	1,030	840	1,860	1,900	
	Aug	990	820	1,820	1,890	
	Sept	1,000	800	1,810	1,920	
	Oct	1,040	770	1,800	1,860	
	Nov	1,060	750	1,810	1,820	

<sup>7</sup> Numbers are rounded independently to the nearest 10; hence components may not sum to totals.