

## Registered Actively Seeking Work June 2013

Statistics Unit: [www.gov.je/statistics](http://www.gov.je/statistics)

### Summary

On 30 June 2013:

- on a seasonally adjusted<sup>1</sup> basis, the total number of people registered as actively seeking work (ASW) in Jersey was<sup>2</sup>:
  - 20 lower than a month earlier, in May 2013;
  - 30 lower than the average for the preceding three months;
- the non-seasonally adjusted ASW total was 1,850; this latest monthly total is:
  - 30 lower than a month earlier, in May 2013;
  - 130 higher than a year earlier (June 2012) and almost double that of four years ago (June 2009)<sup>3</sup>;
- **long-term registered ASW** (registered for more than twelve months) accounted for more than a fifth of total ASW and was at the highest level recorded to date;
- **260 teenagers aged 16-19 years** were registered as ASW, a similar level to that seen in the previous month; 100 teenagers were on the Advance to Work scheme;
- people of British/Jersey **nationality** accounted for almost four-fifths of the ASW total in June 2013; this proportion has reduced slightly over the last two years, since June 2011;
- the number of Portuguese/Madeiran nationals registered as ASW has increased from 100 to 200 over the last two years, from June 2011 to June 2013, whilst the number of Polish nationals registered as ASW has increased from 20 to 60 over the same period.

### Introduction

Data on people registered as actively seeking work in Jersey is compiled and administered by the Social Security Department. The Statistics Unit independently analyses this anonymised data and publishes a monthly report.

When interpreting the numbers presented, it should be kept in mind that there is no legal requirement for all unemployed residents of Jersey to register as actively seeking work (ASW) with the Social Security Department. The numbers shown constitute an informative set of indicators of the level of individuals actively seeking work in the Island at a given point in time.

The internationally comparable unemployment rate (as defined by the International Labour Organisation, ILO) is measured for Jersey through the Annual Social Survey or the Census. The ILO unemployment rate on 27 March 2011, measured by the 2011 Census, was 4.7%; this rate corresponds to 2,570 people being unemployed at that point in time.

<sup>1</sup> Seasonal adjustment is a statistical technique which enables examination of the underlying behaviour in a series of data by removing variations associated with the time of year, e.g. Christmas, Easter, academic year.

<sup>2</sup> ASW numbers presented in this report are rounded independently to the nearest 10.

<sup>3</sup> When placing the figures contained in this report in a historical context, it should be recognised that there have been significant changes in the criteria relating to registered ASW in Jersey in recent years. In particular, the introduction of Income Support in 2008 has led to a higher proportion of individuals who were actively seeking work being included in the registered figures.

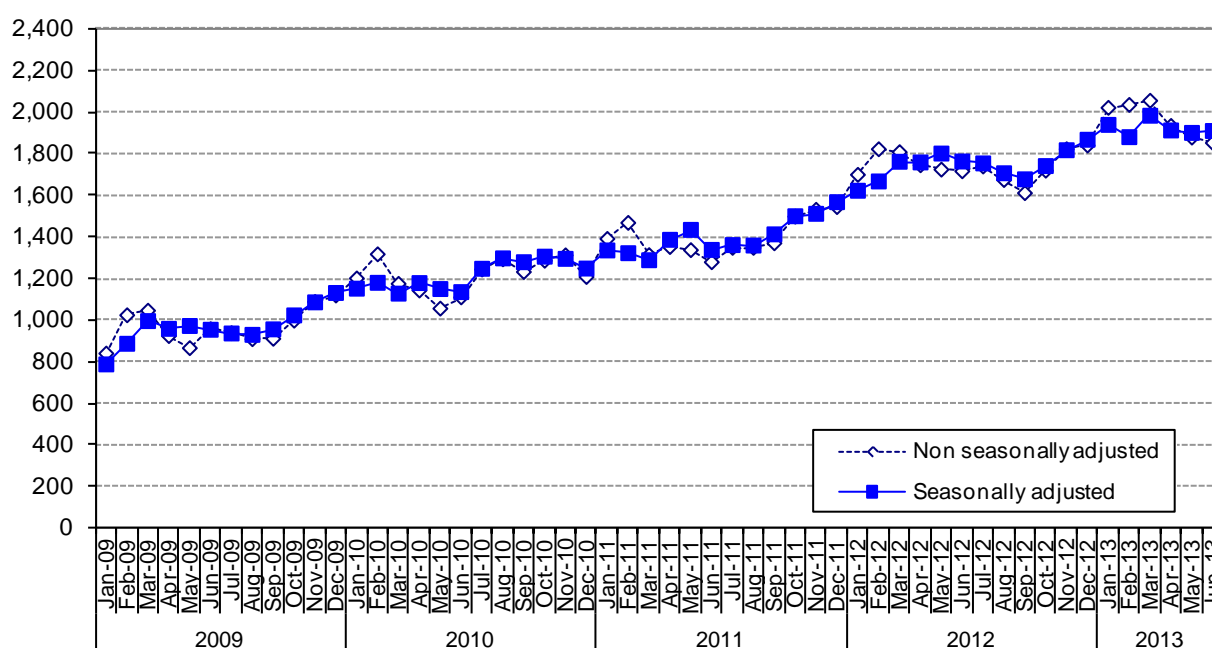
The numbers of people registered as ASW include people who are on the Advance to Work, Advance Plus and Workwise schemes (see Notes). The ASW figure will also include individuals who are working less than the 35 hours a week required under the terms of Income support; such individuals will be working and actively seeking working simultaneously.

### Registered Actively Seeking Work

On 30 June 2013, 1,850 people were registered with the Social Security Department as actively seeking work (ASW). Over three-quarters (77%) of people registered as ASW on this date (1,430 individuals) were receiving Income Support<sup>4</sup>.

Figure 1 shows the total number of people registered as ASW at the end of each month since January 2009 (monthly data are shown in Appendix Table A1). The total number registered in June 2013 was 30 lower than a month earlier (May 2013), some 130 higher than a year earlier (June 2012) and almost double that of four years earlier (June 2009).

**Figure 1 – Total number of individuals registered as ASW, Jan 2009 – Jun 2013**



The seasonally adjusted series of the total registered as ASW, in which seasonal and calendar effects are removed, is also shown on Figure 1. From this perspective, the total number of people registered as ASW in Jersey in June 2013 was:

- 20 lower than a month earlier, in May 2013;
- 30 lower than the mean for the preceding three-month period, March to May 2013.

### Registered ASW by age

On 30 June 2013, more than a quarter (27%) of all people registered as ASW were under the age of 25 years; around one in seven (14%) of the total were teenagers aged 16-19 years.

Figure 2 shows the numbers registered as ASW by age of individuals for the last five months, from February 2013 to June 2013. In the latest month, all age groups below 30 years recorded small increases (of 10 or fewer) compared with the previous month; in contrast, most groups aged 30 years or over recorded small decreases (of 20 or fewer).

<sup>4</sup> The total number of adults receiving Income Support and not working will be greater than this figure, which represents the number of people receiving Income Support who were registered as ASW on 30 June 2013.

**Figure 2 – Individuals registered as ASW by age, Feb 2013 – Jun 2013**

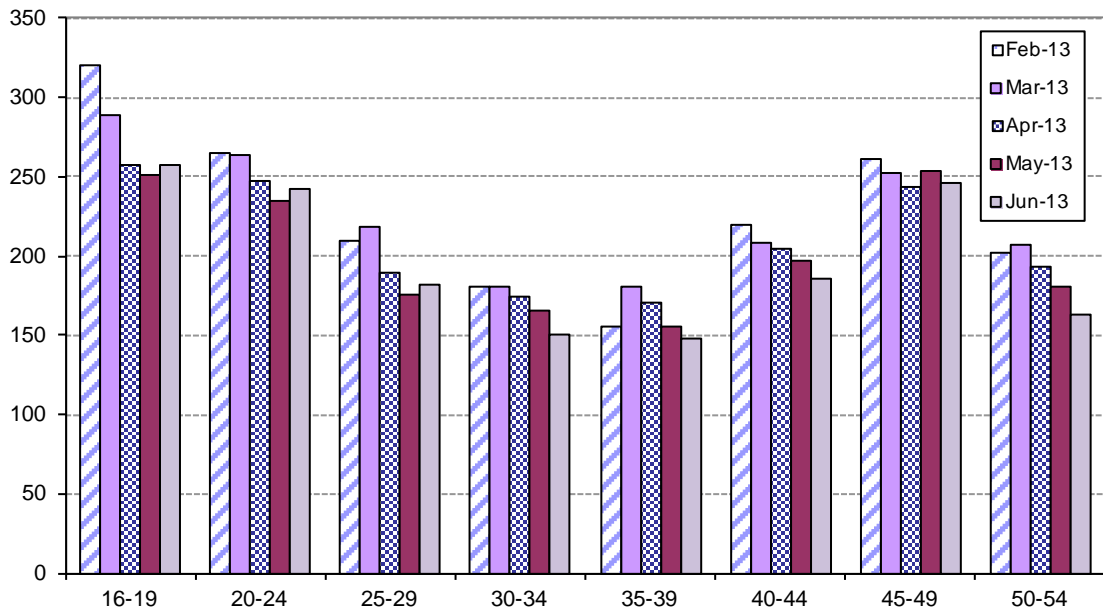
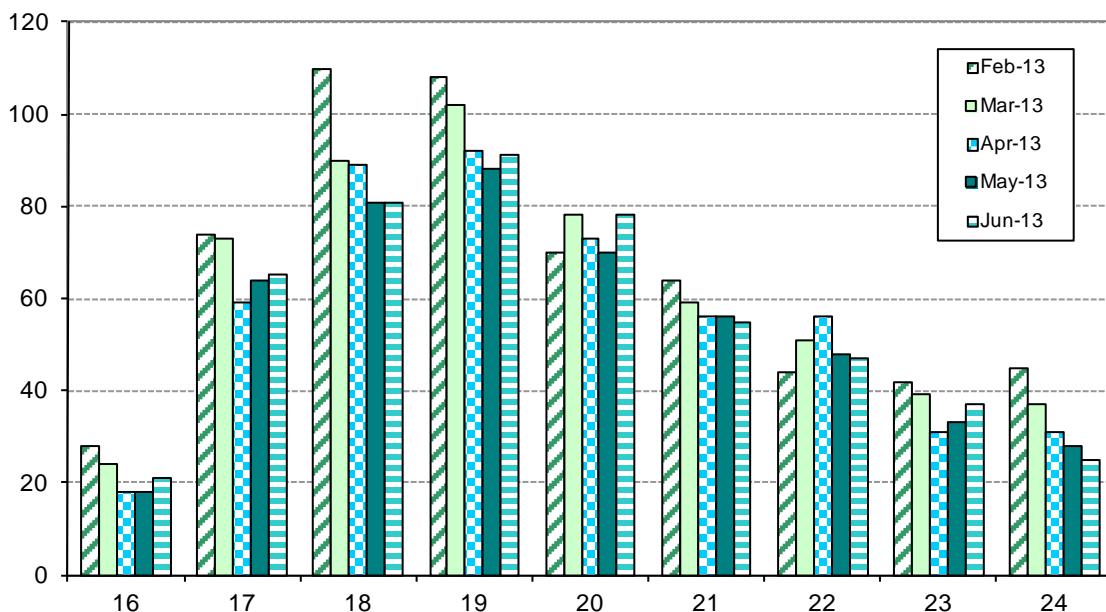


Figure 3 shows the age distribution for people under 25 years of age who were registered as ASW in the latest five months, from February 2013 to June 2013. As in previous recent months, the greatest numbers of people registered as ASW at the end of June 2013 were for ages 18 and 19 years<sup>5</sup>.

Of the 260 teenagers (aged 16-19 years) who were registered as ASW at the end of June 2013, 100 were on the Advance to Work scheme.

**Figure 3 – Individuals under the age of 25 registered as ASW, Feb 2013 – Jun 2013**

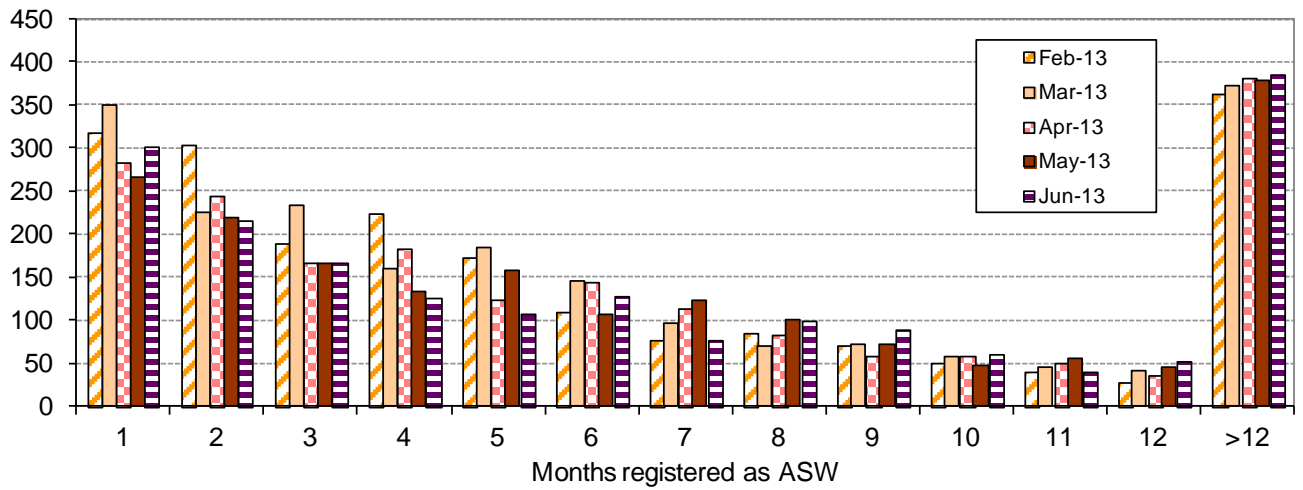


<sup>5</sup> It should be acknowledged that a change to the Income Support criteria in September 2011 meant that individuals aged 16-18 who do not live in an Income Support household no longer receive the adult component of Income Support in their own right and as a result are not required to register as ASW.

## Duration as ASW

More than a third (37%) of all people registered as ASW on 30 June 2013 had been registered for three months or less – see Figure 4.

**Figure 4 – Registered ASW by length of period registered (months)<sup>6</sup>, Feb 2013 – Jun 2013**



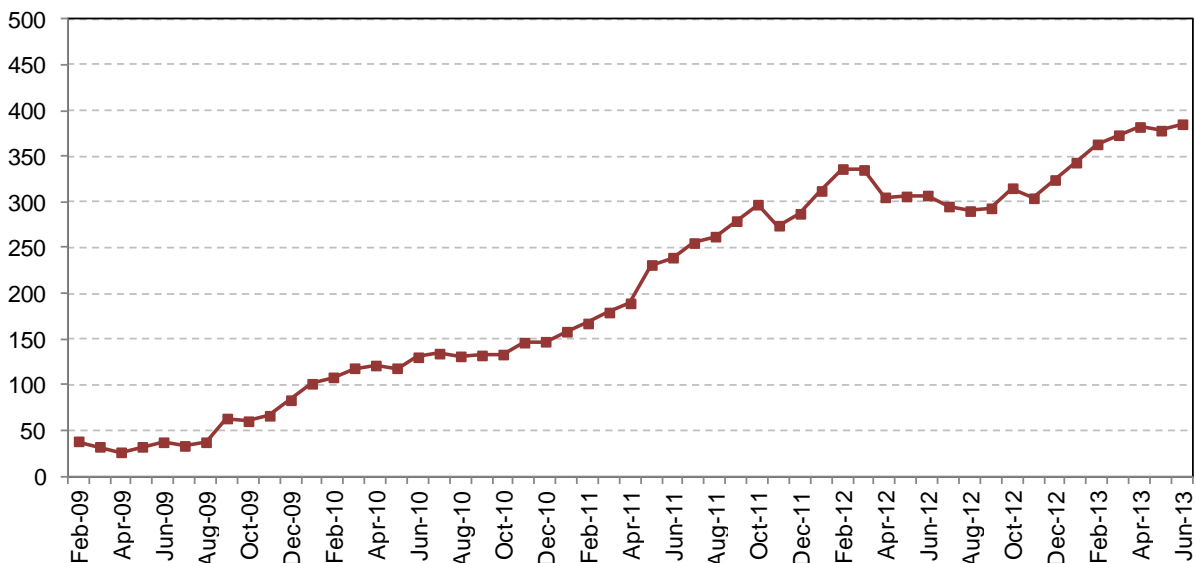
300 people had registered as ASW in the latest month, about 30 more than in May 2013. The latest number of new registrants was 10 fewer than in the corresponding month of the previous year, June 2012, and 80 more than in June 2011.

## Long-term ASW

On 30 June 2013, there were 390 people who had been registered as ASW for longer than twelve months. This latest number of long-term ASW is 10 more than that of a month earlier (May 2013) and was the highest number recorded to date (see Figure 5).

Long-term ASW accounted for more than a fifth (21%) of the latest ASW total.

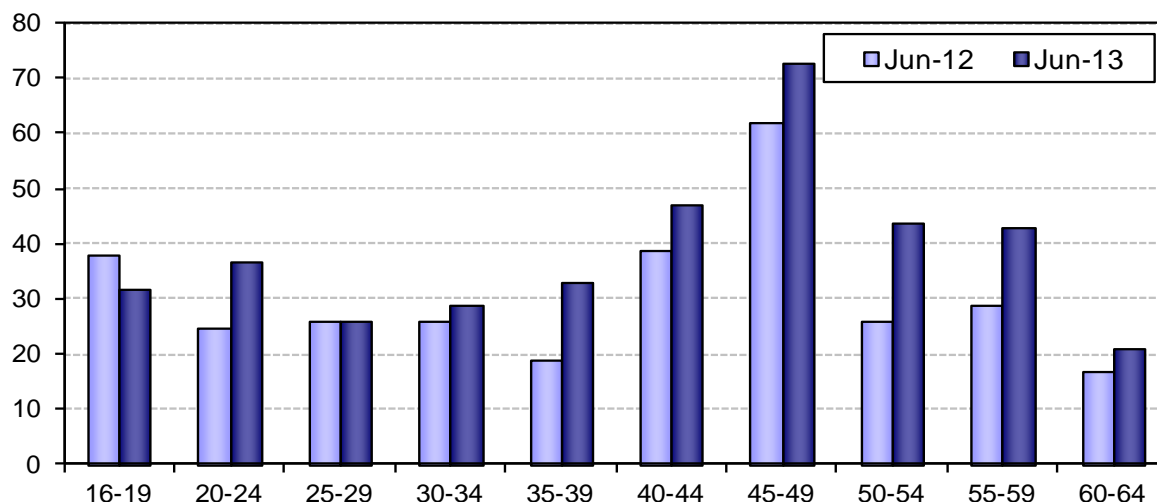
**Figure 5 – Long-term ASW, Jan 2009 – Jun 2013**



<sup>6</sup> The ASW figures from June 2012 include a revision to the calculation of the length of time for which an individual has been registered as ASW. Previously, the duration had been calculated using the number of weeks an individual had been registered as ASW, whereas from June 2012 the calculation of duration is based on calendar months.

Figure 6 shows the age distribution of the long-term ASW in June 2013.

**Figure 6 – Long-term ASW by age, Jun 2012 and Jun 2013**



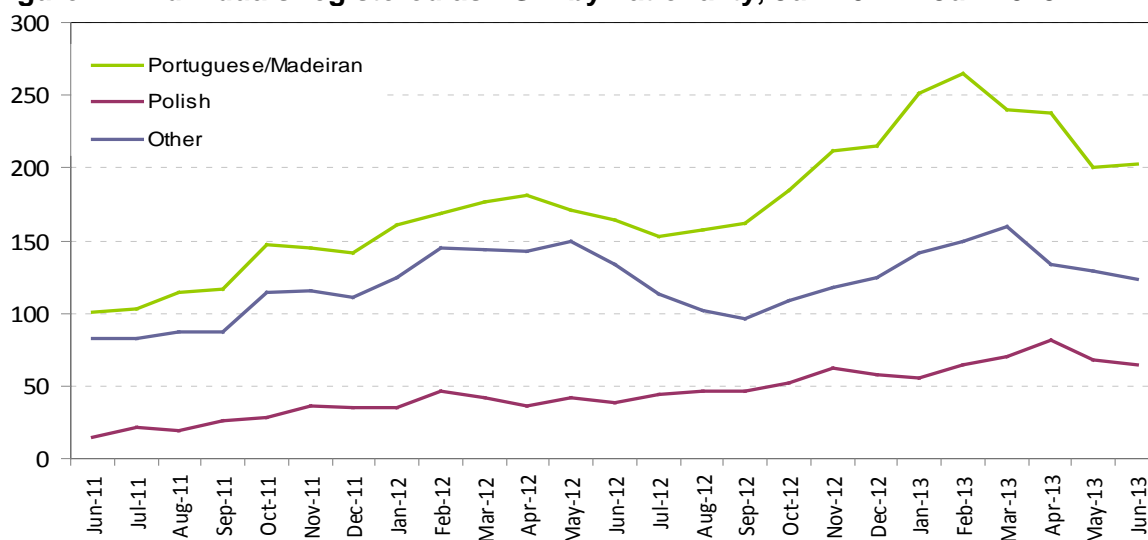
In June 2013 there were 70 people under 25 years of age who had been registered as ASW for more than a year, accounting for more than a sixth (18%) of the total number of long-term ASW. People aged 45 years or above accounted for almost half (46%) of the total number of long-term ASW in June 2013.

### Registered ASW by Nationality

On 30 June 2013, almost four-fifths of all people registered as ASW were of British/Jersey nationality<sup>7</sup>. The proportion of the total ASW represented by such nationals has decreased slightly over the last two years, from 84% in June 2011 to 79% in June 2013.

The number of individuals registered as ASW for nationalities other than British/Jersey over the last two years is shown in Figure 7.

**Figure 7 – Individuals registered as ASW by nationality, Jun 2011 – Jun 2013**



There were 200 individuals of Portuguese/Madeiran nationality registered as ASW in June 2013; this number is some 40 greater than a year earlier (June 2012) and double that of two years ago (June 2011).

There were 60 individuals of Polish nationality registered as ASW in June 2013; this number is some 20 greater than a year earlier (June 2012) and three times that of two years ago (June 2011).

<sup>7</sup> Nationality recorded by the Social Security Department for the purpose of registering as ASW is self-reported.

## Industry

Individuals working in some industries of the economy, notably in the Finance sector, often seek employment through private agencies and do not register with the Social Security Department. Such industries will, therefore, tend to be under-represented in the ASW numbers.

The last industry of employment was recorded for almost nine out of ten people registered as ASW in June 2013:

- around one in five were previously employed in 'Miscellaneous professional and domestic services' (21%) or in 'Retail and Wholesale, Motor repairs and sales' (19%);
- around one in seven were previously employed in 'Construction and allied trades' (14%).

## Notes

People who are registered as actively seeking work receive the support of one of the government employment schemes which come under the administration of Back to Work. They are:

- Advance to Work – for jobseekers aged 16 – 19 years
- Advance Plus – for jobseekers with an industry-specific interest aged 20 – 65 years
- Workwise – for jobseekers with special employment needs
- Work Zone – for all registered jobseekers

In addition to the development and expansion of these schemes, Back to Work is responsible for:

- The Employment Grant
- A dedicated Employer Engagement team
- The Long Term Unemployment Programme
- Industry and employer specific initiatives.

The aim of Back to Work is to increase access to job opportunities for locally qualified people who are registered as actively seeking work by supporting jobseekers and building a partnership with employers to provide sustainable job opportunities.

*Statistics Unit  
24 July 2013*

## Appendix

Table A1: Number of individuals registered as ASW, Jan 2009 – Jun 2013<sup>8</sup>

		Male	Female	Total	Seasonally adjusted total
<b>2009</b>	Jan	570	270	840	790
	Feb	700	320	1,020	890
	Mar	720	330	1,050	1,000
	Apr	620	300	920	960
	May	560	300	870	970
	Jun	630	330	960	950
	Jul	620	320	940	940
	Aug	580	320	910	930
	Sep	580	330	910	960
	Oct	650	350	1,000	1,020
	Nov	700	390	1,090	1,090
	Dec	700	420	1,120	1,130
<b>2010</b>	Jan	770	440	1,200	1,150
	Feb	810	510	1,320	1,180
	Mar	720	450	1,170	1,130
	Apr	710	430	1,140	1,180
	May	670	390	1,060	1,150
	Jun	690	420	1,110	1,130
	Jul	760	490	1,240	1,250
	Aug	810	490	1,290	1,300
	Sep	770	460	1,230	1,280
	Oct	840	450	1,290	1,300
	Nov	870	440	1,310	1,290
	Dec	800	410	1,210	1,250

		Male	Female	Total	Seasonally adjusted total
<b>2011</b>	Jan	910	480	1,390	1,330
	Feb	960	510	1,470	1,320
	Mar	850	460	1,310	1,290
	Apr	870	490	1,350	1,390
	May	820	520	1,340	1,430
	Jun	780	500	1,280	1,340
	Jul	800	550	1,350	1,360
	Aug	820	530	1,350	1,360
	Sep	850	520	1,370	1,410
	Oct	920	570	1,500	1,500
	Nov	960	580	1,530	1,510
	Dec	960	580	1,540	1,570
<b>2012</b>	Jan	1,050	650	1,700	1,620
	Feb	1,130	690	1,820	1,670
	Mar	1,100	700	1,810	1,760
	Apr	1,060	680	1,740	1,760
	May	1,040	680	1,720	1,800
	Jun	1,020	700	1,720	1,760
	Jul	1,020	720	1,740	1,750
	Aug	1,020	650	1,670	1,710
	Sep	970	650	1,610	1,680
	Oct	1,020	700	1,720	1,740
	Nov	1,090	730	1,820	1,820
	Dec	1,100	740	1,840	1,870
<b>2013</b>	Jan	1,210	810	2,020	1,940
	Feb	1,210	820	2,030	1,880
	Mar	1,230	820	2,050	1,980
	Apr	1,140	800	1,930	1,910
	May	1,080	800	1,880	1,930
	Jun	1,040	810	1,850	1,910

<sup>8</sup> Numbers are rounded independently to the nearest 10; hence components may not sum to totals.