

# Registered Unemployment January 2011

Statistics Unit: [www.gov.je/statistics](http://www.gov.je/statistics)



## Introduction

Data on people registered as unemployed and actively seeking work in Jersey is compiled and administered by the Social Security Department. The Statistics Unit independently analyses this anonymised data and publishes a monthly report.

When interpreting the numbers presented in this report, it should be kept in mind that there is no legal requirement for all unemployed residents of Jersey to register as actively seeking work (ASW) with the Social Security Department. The numbers shown, therefore, constitute an informative set of indicators of the level and characteristics of unemployment in the Island at the specified point in time.

*Furthermore, when placing the figures contained in this report in a historical context, it should be recognised that there have been significant changes in the criteria relating to registered unemployment in Jersey in recent years. In particular, the introduction of Income Support in 2008 has led to a much higher proportion of individuals actively seeking work being included in the registered unemployment figures.*

The internationally comparable unemployment rate (as defined by the International Labour Organisation, ILO) is measured on an annual basis by the Jersey Annual Social Survey. In the summer of 2010 the ILO unemployment rate for Jersey was measured to be 3.0%. This rate corresponds to 1,700 people being unemployed at that point in time.

The numbers of people registered as unemployed and actively seeking work include people who are on the Advance to Work, Advance Plus<sup>1</sup> and Workwise schemes<sup>2</sup>.

## Summary

On 31<sup>st</sup> January 2010:

- **the total number<sup>3</sup> of people registered as unemployed and actively seeking work (ASW) in Jersey was 1,390;**
- the latest monthly ASW total is:
  - 180 higher than that of a month earlier, December 2010;
  - 190 higher than that of a year earlier, January 2010;
- there were 320 new registrations in the 4-week period prior to the end of January 2011, which is some 150 more than the corresponding figure for the end of December 2010;
- about a quarter of the ASW total were teenagers aged 16-19 years; 140 teenagers were on the Advance to Work Scheme<sup>1</sup>;

---

<sup>1</sup> The Advance to Work scheme provides 16 to 19 year olds who have left school or college with a relevant work placement and training. Advance Plus provides over 19 year olds with a relevant work placement and training.

<sup>2</sup> Workwise comprises of a team of advisors in the Social Security Department who help people with special employment needs, or having particular employment barriers, to prepare for and seek suitable work. From October 2010, a system enabling more complete counting of individuals on Workwise placements has been implemented.

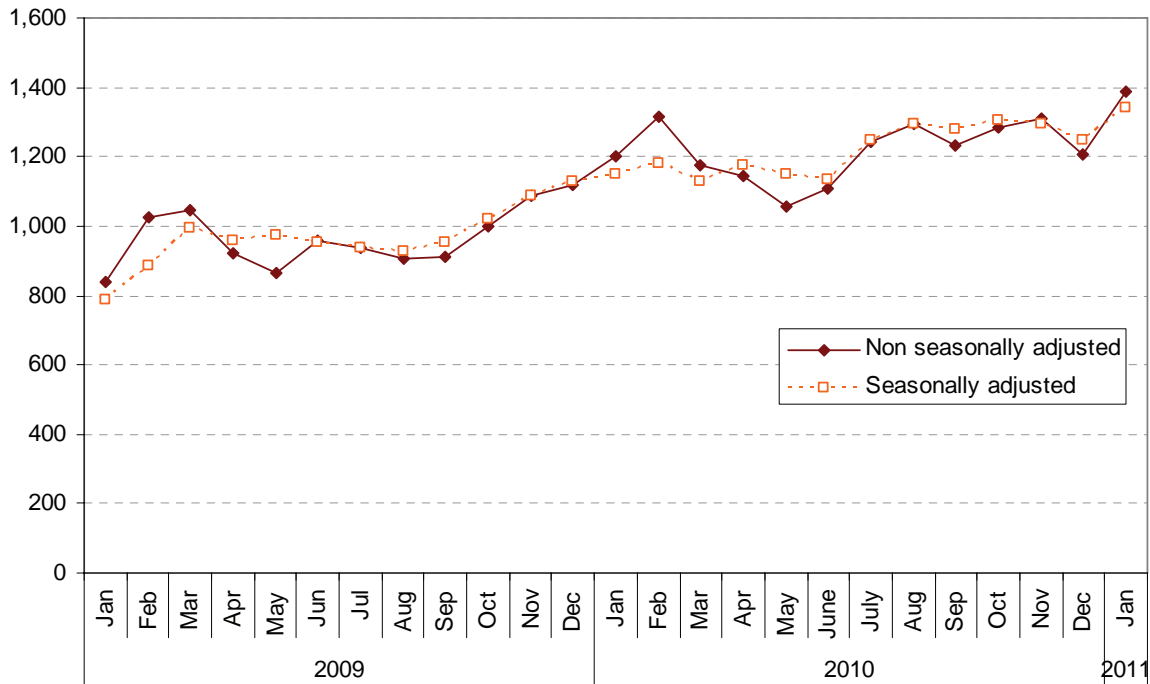
<sup>3</sup> Numbers presented in this report are rounded to the nearest 10.

## Registered Unemployed people Actively Seeking Work

On 31<sup>st</sup> January 2011, 1,390 people were registered with the Social Security Department as unemployed and actively seeking work (ASW). Almost two-thirds (65%) of people registered as ASW on this date (900 individuals) were receiving Income Support<sup>4</sup>.

Figure 1 shows the total number of people registered as ASW at the end of each month since January 2009 (monthly data are also shown in Annex Table A1). The total number registered in January 2011 was 180 higher than in December 2010 and 190 higher than a year earlier, in January 2010.

**Figure 1– Total number of individuals registered as ASW, Jan 2009 – Jan 2011**



The seasonally adjusted series of the total registered as ASW, in which seasonal and calendar effects are removed, is also shown on Figure 1. From this perspective, the total number of people registered as ASW in Jersey in January 2011 was 60 higher than the monthly average recorded over the last six months of 2010, and about 120 higher than that in calendar year 2010.

## Registered ASW by age

On 31<sup>st</sup> January 2011, almost two-fifths (39%) of all people registered as ASW in Jersey were under the age of 25, with about a quarter of the total (23%) being teenagers aged 16-19 years.

Figure 2 shows the numbers registered as ASW by age of individuals for the last four months, from October 2010 to January 2011; every age category saw an increase in the numbers registered between December 2010 and January 2011.

<sup>4</sup> The total number of adults receiving Income Support without work will be greater than this figure, which represents the number registered on 31st January 2011 as ASW.

**Figure 2 – Individuals registered as ASW by age, Oct 2010 – Jan 2011**

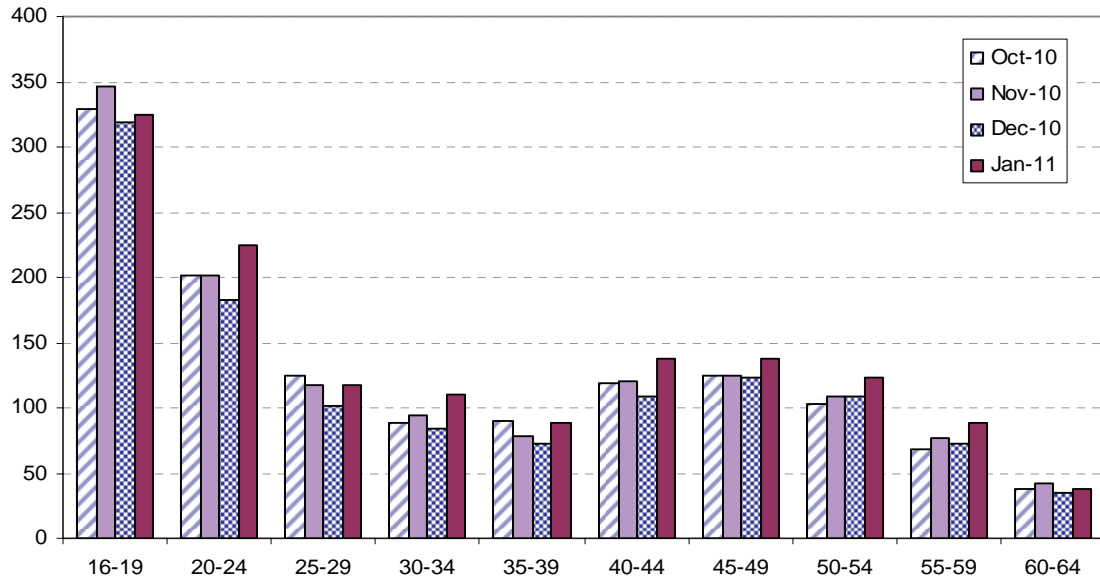
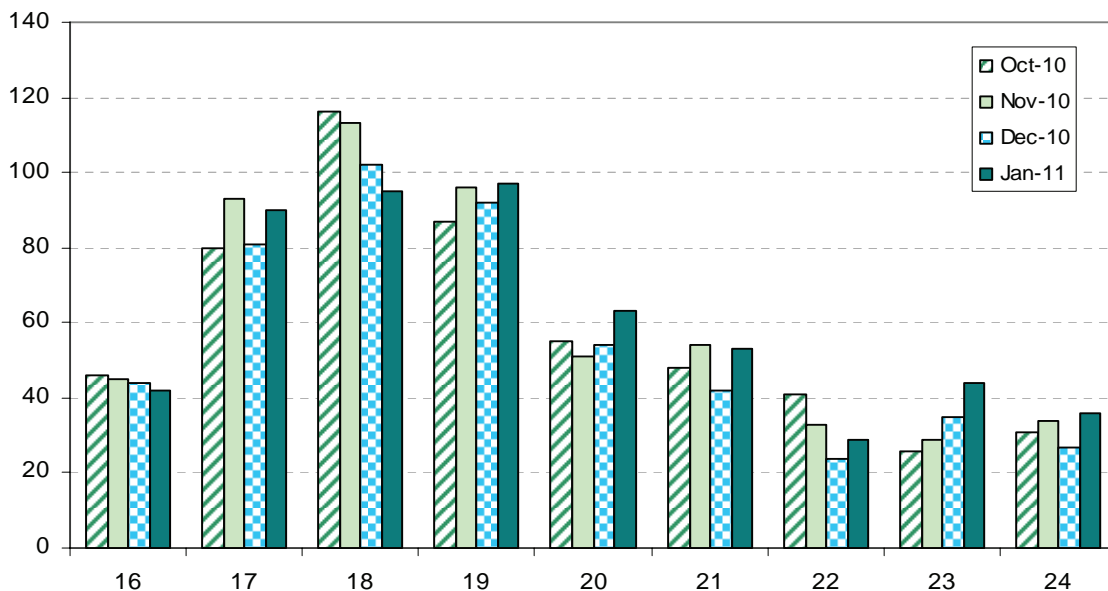


Figure 3 shows the age distribution for people under 25 years of age who were registered as ASW from October 2010 to January 2011. All ages, except 16 and 18 year olds, saw an increase between December 2010 and January 2011 in the number of individuals registered.

Of the 320 teenagers who were registered as ASW at the end of January 2011, 140 were on the Advance to Work scheme.

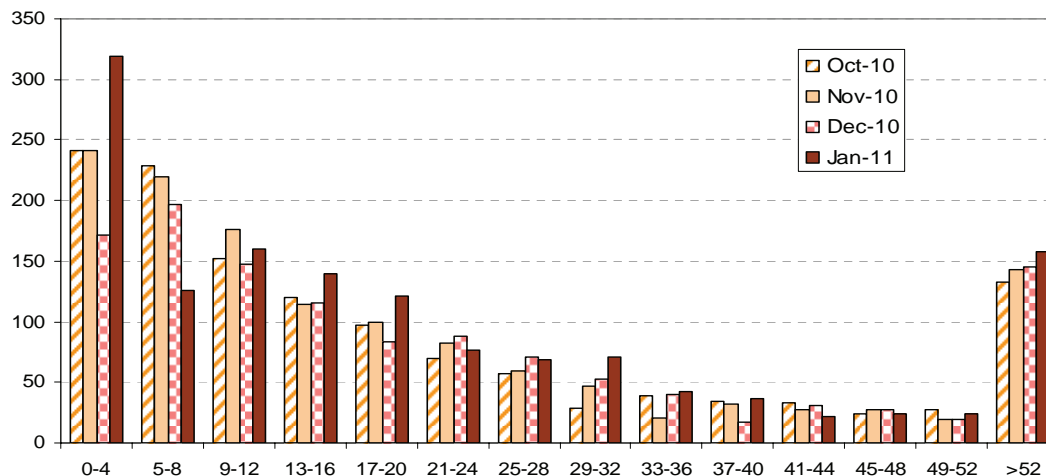
**Figure 3 – Individuals under the age of 25 registered as ASW, Oct 2010 – Jan 2011**



## Duration as ASW

More than two-fifths (44%) of all people registered as ASW on 31<sup>st</sup> January 2011 had been registered for fewer than 13 weeks (approximately 3 months). Approximately 11% of the total (160 individuals) had been registered as ASW for more than a year - see Figure 4.

**Figure 4 – Registered ASW by length of period registered (weeks), Oct 2010 - Jan 2011**



About 320 people had registered in the latest four weeks. This number is some 150 greater than the corresponding number for the four weeks up to 31<sup>st</sup> December 2010.

## Occupation and Industry

Individuals working in some occupations and industries of the economy, notably in the Finance sector, often seek employment through private agencies instead of registering with the Social Security Department. Such occupations and industries will, therefore, be under-represented in the ASW numbers. Nevertheless, the change over time for all recorded occupations and industries will be informative.

The last industry of employment was recorded for almost 90% of all those registered as ASW in January 2011:

- almost a third of the latest monthly increase was from people whose last employment was in the category 'Wholesale and Retail, Motor repairs and sales';
- about a quarter of the monthly increase was from 'Banking, Miscellaneous Insurance, Finance and Business';
- and about a sixth (17%) from 'Construction and allied trades, Mining and quarrying'.

From an occupation<sup>5</sup> perspective:

- a third of the latest monthly increase was due to people whose last occupation was in 'Sales and Customer Service Occupations';
- and about an eighth of the increase was from 'Elementary Occupations'.

*Statistics Unit  
23<sup>rd</sup> February 2011*

<sup>5</sup> Standard Occupational Classification SOC2000.

## Notes

### **Standard Occupational Classification (SOC 2000):**

Example occupations within each category:

#### **Managers and Senior Officials**

managers and senior offices in public and private sectors.

#### **Professional**

science professionals, civil engineers, pharmacists, veterinarians, teachers, lawyers, judges, chartered accountants, architects, social workers, librarians, clergy.

#### **Associate Professional and Technical**

science technicians, engineering technicians, nurses, dental technicians, physiotherapists, youth workers, police officers (sergeant and below), artists, actors, graphic designers, journalists, sport coaches, air traffic controllers.

#### **Administrative and Secretarial**

office clerks, secretaries, personal assistants, receptionists, book-keepers, telephonists.

#### **Skilled Trades**

farmers, gardeners, fishermen, mechanics, electricians, telecommunication engineer, computer engineer, bricklayers, plumbers, carpenters, plasterers, tailors, printers, butchers, bakers, chefs.

#### **Personal Service**

nursing auxiliaries and assistants, care assistants, home carers, animal care, leisure and travel assistants, travel agents, hairdressers, nursery nurses, childminders, education assistants, housekeepers.

#### **Sales and Customer Service**

sales assistants, retail cashiers, call centre agents, check out operators, customer care occupations, telephone sales person.

#### **Process, Plant and Machine Operatives**

plant and machine operatives, fork-lift truck drivers, taxi cab drivers, chauffeurs, bus drivers, van drivers, construction operatives.

#### **Elementary Occupations**

farm workers, labourer, packers, postal workers, messengers, couriers, hotel porters, kitchen and catering assistants, waiters, bar staff, domestic cleaners, security guards.

## Annex

Table A1: Number of individuals registered as ASW, Jan 2009 – Jan 2011<sup>6</sup>

		Male	Female	Total	Seasonally adjusted total
2009	Jan	570	270	840	790
	Feb	700	320	1,020	890
	Mar	720	330	1,050	1,000
	Apr	620	300	920	960
	May	560	300	870	970
	Jun	630	330	960	950
	Jul	620	320	940	940
	Aug	580	320	910	930
	Sep	580	330	910	960
	Oct	650	350	1,000	1,020
	Nov	700	390	1,090	1,090
	Dec	700	420	1,120	1,130
2010	Jan	770	440	1,200	1,150
	Feb	810	510	1,320	1,180
	Mar	720	450	1,170	1,130
	Apr	710	430	1,140	1,180
	May	670	390	1,060	1,150
	Jun	690	420	1,110	1,130
	Jul	760	490	1,240	1,250
	Aug	810	490	1,290	1,300
	Sep	770	460	1,230	1,280
	Oct	840	450	1,290	1,300
	Nov	870	440	1,310	1,290
	Dec	800	410	1,210	1,250
2011	Jan	910	480	1,390	1,340

<sup>6</sup> Numbers are rounded independently to the nearest 10; hence components may not sum to totals.