

---

## **JERSEY FUTURE HOSPITAL CO021 – SITE OPTION REPORT**

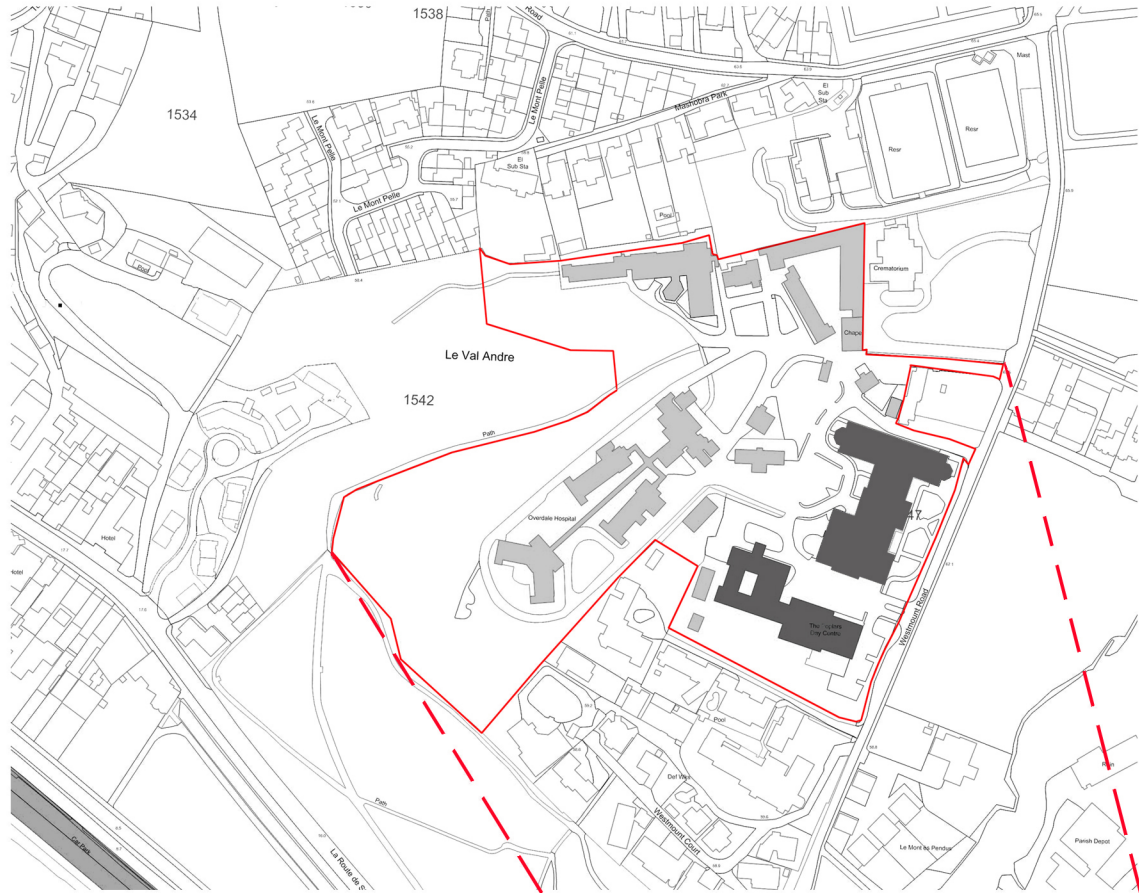
### **APPENDIX 3 SITE BOUNDARY 'RED LINE' PLANS**

#### **QUALITY ASSURANCE**


Sign off: Kieren Morgan

Position: Principal







**\_Overdale Site**

 Assumed line of existing site boundary



**Existing Jersey General Hospital Site**

 Assumed line of existing site boundary

 Area identified for possible acquisition and redevelopment

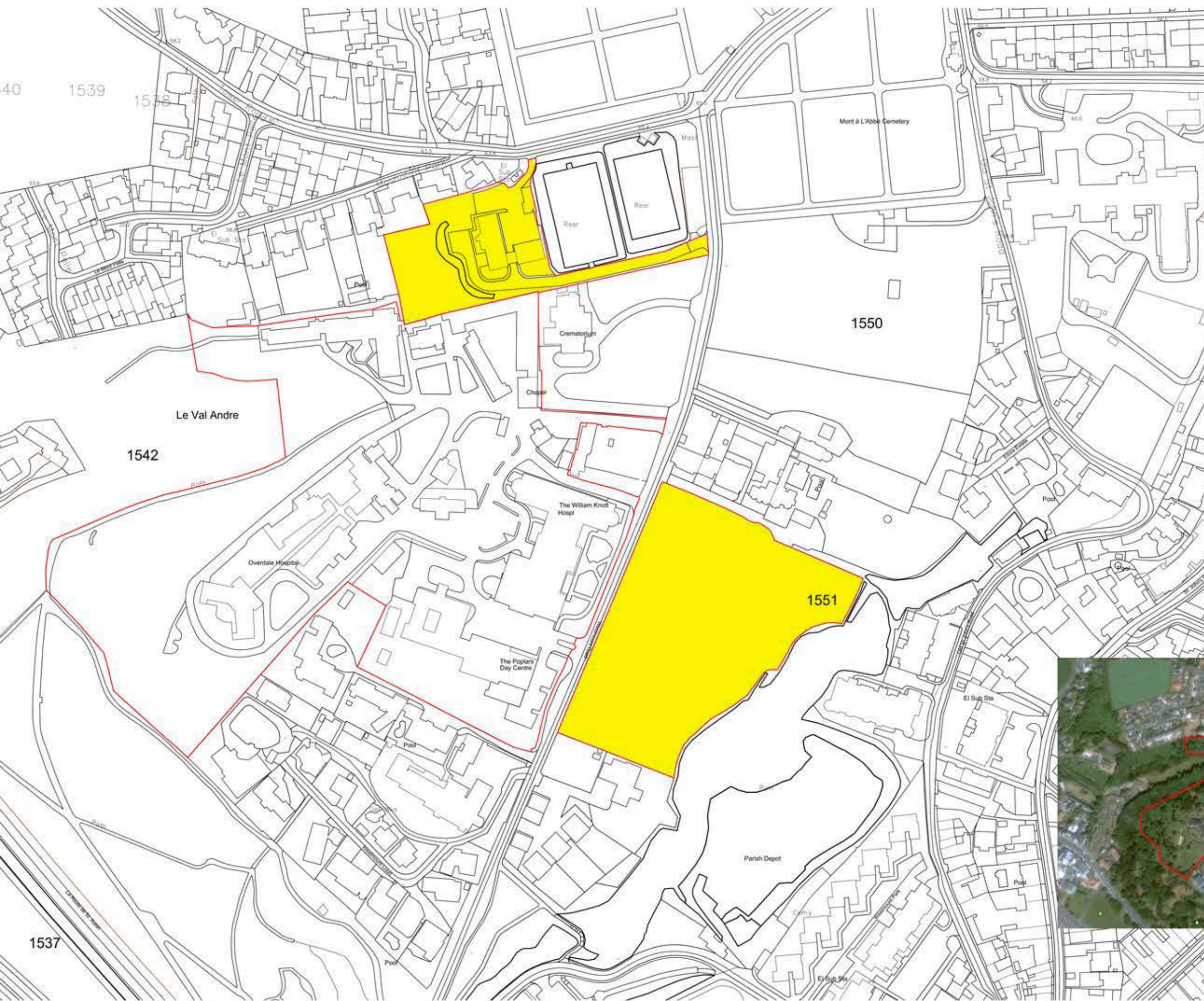


**\_ Proposed 'Dual-Site' Option  
Site Boundary/Plot Area Analysis**

Future Hospital, Jersey

**HASSELL**





**OVERDALE  
SITE BOUNDARY**

- Site Identified for potential acquisition
- Line of site boundary







**JERSEY GENERAL HOSPITAL -  
SITE BOUNDARY**

- Site Identified for potential acquisition
- Line of site boundary



001081-HSL-A-XX-DR-A-0927



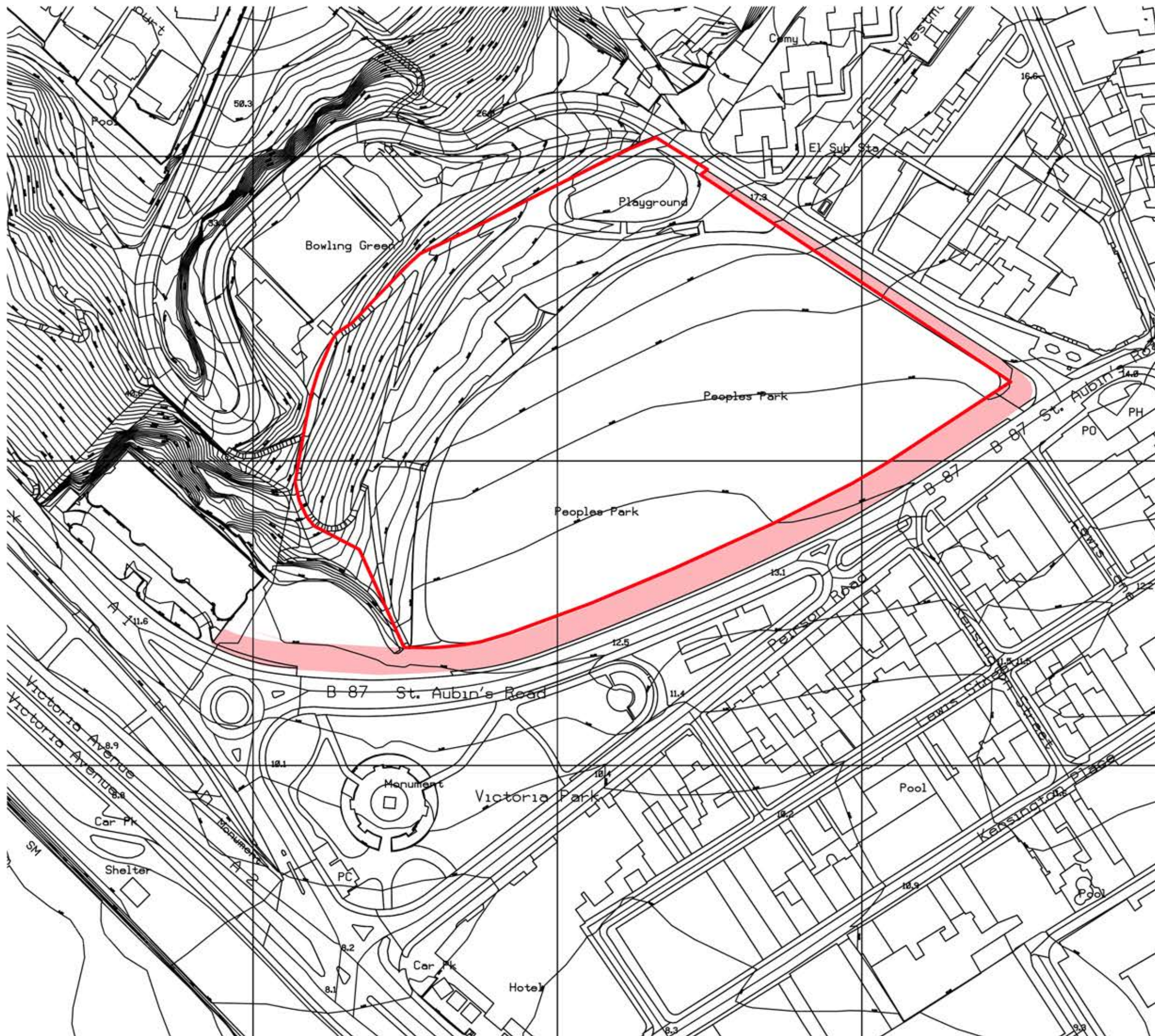


**WATERFRONT  
SITE BOUNDARY**



— Line of site boundary







## PEOPLE'S PARK SITE BOUNDARY

-  Line of site boundary
-  Approx. extents of 3rd & 4th parcels of land conveyed to P.O.S.H 19/07/1856

