

Jersey Future Hospital Project

Outline Business Case

Appendix 23 – Construction Programme and Phasing

Document Control

Version	Date Issued	Summary of Changes	Author
V1	26/9/17	Document compilation	T Nicholls
V2	11/10/17	Programme updated	T Nicholls
V3	24/10/17	Document amended and template updated	T Nicholls

ID	Task Name	% Complete	Duration	Start	Finish	
0	RIBA Stage Programme	23%	527.6 wks?	Mon 17/10/16	Wed 25/11/26	
1	1 CR022 Process with Repeatable rooms	100%	22 wks	Mon 17/10/16	Fri 17/03/17	
87	2 JFH RIBA Plan of Work Stages	30%	527.6 wks	Mon 17/10/16	Wed 25/11/26	
88	2.1 RIBA Stage 1 - Prepare / Brief (D3)	100%	28 wks	Mon 17/10/16	Fri 28/04/17	
109	2.2 EIA Produce, Review, Comment & Update	80%	51.8 wks	Mon 17/10/16	Thu 12/10/17	
320	2.3 RIBA Stage 2 - Concept Design (D19)	22%	49 wks	Thu 12/01/17	Wed 20/12/17	
564	2.4 Procurement	52%	41.8 wks	Wed 29/03/17	Mon 15/01/18	
659	2.5 RIBA Stage 3 - Detailed Design (D20)	0%	55 wks	Thu 21/12/17	Wed 09/01/19	
679	2.6 RIBA 3 PLUS - Pricing Co-ordinated Design	0%	17 wks	Thu 10/01/19	Wed 08/05/19	
687	2.7 JFH Pre-Contract Services Agreement	0%	68.4 wks	Mon 15/01/18	Wed 08/05/19	
690	2.8 JFH Works Contract	0%	253.8 wks	Wed 08/05/19	Tue 19/03/24	
693	2.9 RIBA Stage 4 Technical Production (D23)	0%	70.8 wks	Thu 10/01/19	Tue 19/05/20	
694	2.9.1 Phased Demolitions - Initial Works	0%	56 wks	Wed 24/04/19	Tue 19/05/20	
700	2.9.2 RIBA 4 Design Packages	0%	24 wks	Thu 10/01/19	Wed 26/06/19	
731	2.10 RIBA Stage 5 & 6 - Jersey Future Hospital (D18)	0%	220 wks	Wed 01/01/20	Tue 19/03/24	
732	2.10.1 Construction Mobilisation (D24)	0%	16 wks	Wed 01/01/20	Tue 21/04/20	
733	2.10.2 Construction Breakdown	0%	158 wks	Wed 22/04/20	Tue 02/05/23	
743	2.10.3 Building Works & Commissioning	0%	30 wks	Wed 03/05/23	Tue 28/11/23	
749	2.10.4 Post-Completion Activities/Moves (D29)	0%	16 wks	Wed 29/11/23	Tue 19/03/24	
752	2.11 Aftercare Period 3yrs	0%	156.2 wks	Wed 29/11/23	Wed 25/11/26	
755	3 JGH Enabling Schemes 01-10 v1.2	16%	120.4 wks	Mon 02/01/17	Tue 23/04/19	
756	3.1 ES01 Catering CPU (off-site)	23%	75.4 wks	Mon 02/01/17	Tue 12/06/18	
830	3.2 ES02 Engineering Block (now ES04 & 06)	16%	74 wks	Mon 02/01/17	Fri 01/06/18	
870	3.3 ES03 Clinics to GFL vacated catering (on-site) Phased Start (into ES08)	18%	97 wks	Mon 02/01/17	Fri 09/11/18	
899	3.4 ES04 Temporary Clinic (on-site)	19%	94.6 wks	Mon 02/01/17	Wed 24/10/18	
979	3.5 ES05 Medical records (off-site)	24%	81 wks	Mon 02/01/17	Fri 20/07/18	
1050	3.6 ES06 Corporate Functions (off-site)	13%	74 wks	Mon 27/02/17	Fri 27/07/18	
1078	3.7 ES07 Westaway Clinic Block (off-site)	8%	120.4 wks	Mon 02/01/17	Tue 23/04/19	
1152	3.8 ES08 Granite Block Clinics (on-site)	9%	110.6 wks	Mon 02/01/17	Wed 13/02/19	
1207	3.9 ES09 Critical Plant (on-site)	13%	111.2 wks	Mon 02/01/17	Mon 18/02/19	
1252	3.10 ES10 Staff Accommodation (off-site)	56%	31.8 wks	Mon 13/03/17	Fri 20/10/17	
1259	4 HIA - Health Impact Assessment	12%	450.8 wks	Mon 17/10/16	Thu 05/06/25	
1272	5 Outline Business Case (OBC) (D8)	1%	19.8 wks?	Mon 24/07/17	Thu 07/12/17	
1286	6 Full Business Case (D15)	0%	42 wks	Fri 08/12/17	Thu 27/09/18	
1290	7 MSCP Patriotic St (By Others - On Island Contractor)	0%	70 wks	Wed 24/04/19	Tue 25/08/20	
1294	8 Risk Workshop - Quarterly	60%	36.4 wks	Tue 04/04/17	Wed 13/12/17	

Project: JFH & Westaway Court Programme (Option 4)
Date: Tue 26/09/17

Task		Project Summary		Manual Task		Start-only		Deadline	
Split		Inactive Task		Duration-only		Finish-only		Progress	
Milestone		Inactive Milestone		Manual Summary Rollup		External Tasks		Manual Progress	
Summary		Inactive Summary		Manual Summary		External Milestone			

ID	Task Name	% Comple	Duration	Start	Finish	
0	RIBA Stage Programme	23%	527.6 wks?	Mon 17/10/16	Wed 25/11/26	
1	1 CR022 Process with Repeatable rooms	100%	22 wks	Mon 17/10/16	Fri 17/03/17	
2	1.1 Phase 1 - Departmental Benchmarking	100%	0.6 wks	Wed 19/10/16	Sun 23/10/16	
3	1.1.1 Prepare Phase 1 End stage report	100%	2 days	Wed 19/10/16	Thu 20/10/16	
4	1.1.2 Issue End of Phase report [1h]	100%	0 days	Sun 23/10/16	Sun 23/10/16	23/10
5	1.2 Phase 2 Coordination meeting 1 - Agree approach, cross working & comms	100%	21.4 wks	Mon 17/10/16	Tue 14/03/17	
6	1.2.1 Remainder of Specialty Workshop period	100%	13 days	Mon 17/10/16	Wed 02/11/16	
7	1.2.2 Develop proposed Interventions [2i]	100%	3 days	Thu 03/11/16	Mon 07/11/16	
8	1.2.3 Coordination Sequence	100%	18.2 wks	Tue 08/11/16	Tue 14/03/17	
9	1.2.3.1 Coordination meeting 1	100%	1 day	Tue 08/11/16	Tue 08/11/16	
10	1.2.3.2 Coordination Conference call 1	100%	0 days	Thu 24/11/16	Thu 24/11/16	24/11
11	1.2.3.3 Coordination Meeting 2 / Acute Services Strategy meeting	100%	1 day	Tue 06/12/16	Tue 06/12/16	
12	1.2.3.4 Coordination Conference call 2	100%	0 days	Tue 20/12/16	Tue 20/12/16	20/12
13	1.2.3.5 Coordination meeting 3	100%	1 day	Tue 03/01/17	Tue 03/01/17	
14	1.2.3.6 Coordination Conference call 3	100%	0 days	Tue 17/01/17	Tue 17/01/17	17/01
15	1.2.3.7 Coordination meeting 4	100%	1 day	Tue 31/01/17	Tue 31/01/17	
16	1.2.3.8 Coordination Conference call 4	100%	0 days	Tue 14/02/17	Tue 14/02/17	14/02
17	1.2.3.9 Coordination meeting 5	100%	1 day	Tue 28/02/17	Tue 28/02/17	
18	1.2.3.10 Coordination Conference call 5	100%	1 day	Tue 14/03/17	Tue 14/03/17	
19	1.2.4 Coordination Meeting - Submission of proposed Interventions [2i]	100%	0 days	Tue 08/11/16	Tue 08/11/16	08/11
20	1.2.5 Client review of proposals / alternatives / additions [2j]	100%	7 days	Tue 08/11/16	Wed 16/11/16	
21	1.2.6 Lead Advisor - Develop intervention & modelling Implementation programme	100%	2 days	Thu 17/11/16	Fri 18/11/16	
22	1.2.7 Lead Advisor - publish confirmed programme [2k]	100%	2 days	Mon 21/11/16	Tue 22/11/16	
23	1.2.8 Lead Advisor - Confirm unaffected departments [2m]	100%	4 days	Wed 23/11/16	Mon 28/11/16	
24	1.2.9 Prepare Phase 2 End stage report	100%	2 days	Tue 29/11/16	Wed 30/11/16	
25	1.2.10 Issue End of Phase report [2n]	100%	0 days	Fri 02/12/16	Fri 02/12/16	02/12
26	1.2.11 Inform D3 Project Brief 'Interventions Appendix'	100%	0 days	Mon 28/11/16	Mon 28/11/16	28/11
27	1.3 Phase 3 - Implementation and Modelling [Workflow TBC]	100%	13.4 wks	Thu 24/11/16	Fri 24/02/17	
28	1.3.1 HSSD - Implementation of agreed interventions - [Separate workflow [3o]	100%	24 days	Tue 29/11/16	Fri 30/12/16	
29	1.3.2 Provisional : [1] - Early release of growth factor data	100%	18 days	Wed 07/12/16	Fri 30/12/16	

Project: JFH & Westaway Court Programme (Option 4) Date: Thu 12/10/17	Task		Project Summary		Manual Task		Start-only		Deadline	
	Split		Inactive Task		Duration-only		Finish-only		Progress	
	Milestone		Inactive Milestone		Manual Summary Rollup		External Tasks		Manual Progress	
	Summary		Inactive Summary		Manual Summary		External Milestone			

ID	Task Name	% Comple	Duration	Start	Finish	
30	1.3.3 Provisional : [2] - Early release of spatial planning data	100%	10 days	Mon 02/01/17	Fri 13/01/17	
31	1.3.4 Provisional : [3] - Completion of modelling approach	100%	30 days	Mon 16/01/17	Fri 24/02/17	
32	1.3.5 EY Intervention modelling period [3p - 3q]	100%	38 days	Thu 24/11/16	Mon 16/01/17	
33	1.4 New Phase - Repeatable rooms design	100%	15.6 wks	Wed 30/11/16	Fri 17/03/17	
34	1.4.1 Completion & approval of Repeatable rooms proposal	100%	1 day	Wed 30/11/16	Wed 30/11/16	
35	1.4.2 MJM - Preparation of ADB sheets	100%	10 days	Fri 02/12/16	Mon 19/12/16	
36	1.4.3 MJM - Tranche 1 ADB sheets to team	100%	1 day	Fri 09/12/16	Fri 09/12/16	
37	1.4.4 MJM - Tranche 2 ADB sheets to team	100%	1 day	Mon 19/12/16	Mon 19/12/16	
38	1.4.5 Hassell - Ward room layout development	100%	21 days	Mon 05/12/16	Mon 02/01/17	
39	1.4.6 Presentation pack issue for workshop review	100%	5 days	Tue 03/01/17	Mon 09/01/17	
40	1.4.7 Ward Layout - Feedback workshop 1	100%	1 day	Thu 19/01/17	Thu 19/01/17	
41	1.4.8 Feedback amendments	100%	10 days	Fri 20/01/17	Thu 02/02/17	
42	1.4.9 Presentation pack issue for workshop review	100%	1 day	Fri 03/02/17	Fri 03/02/17	
43	1.4.10 Ward Layout - Feedback workshop 2	100%	1 day	Thu 09/02/17	Thu 09/02/17	
44	1.4.11 Hassell - OPD/Support/FM room layout development	100%	15 days	Mon 02/01/17	Fri 20/01/17	
45	1.4.12 Presentation pack issue for workshop review	100%	2 days	Mon 23/01/17	Tue 24/01/17	
46	1.4.13 OPD/Support/FM - Feedback workshop 1	100%	1 day	Mon 30/01/17	Mon 30/01/17	
47	1.4.14 Feedback amendments	100%	9 days	Tue 31/01/17	Fri 10/02/17	
48	1.4.15 Presentation pack issue for workshop review	100%	1 day	Mon 13/02/17	Mon 13/02/17	
49	1.4.16 OPD/Support/FM- Feedback workshop 2	100%	1 day	Mon 20/02/17	Mon 20/02/17	
50	1.4.17 Hassell - Specialist rooms layout development	100%	15 days	Mon 30/01/17	Fri 17/02/17	
51	1.4.18 Presentation pack issue for workshop review	100%	1 day	Mon 20/02/17	Mon 20/02/17	
52	1.4.19 Specialist Rooms - Feedback workshop 1	100%	1 day	Mon 27/02/17	Mon 27/02/17	
53	1.4.20 Feedback amendments	100%	5 days	Tue 28/02/17	Mon 06/03/17	
54	1.4.21 Presentation pack issue for workshop review	100%	1 day	Tue 07/03/17	Tue 07/03/17	
55	1.4.22 Specialist Rooms- Feedback workshop 2	100%	1 day	Mon 13/03/17	Mon 13/03/17	
56	1.4.23 Assembly of Repeatable Rooms Library	100%	4 days	Tue 14/03/17	Fri 17/03/17	
57	1.4.24 Repeatable Rooms Library sign off	100%	0 days	Fri 17/03/17	Fri 17/03/17	◆ 17/03
58	1.4.25 CR025 Area / cost test sequence	100%	8.8 wks	Mon 05/12/16	Thu 02/02/17	
59	1.4.25.1 Test 1	100%	3 days	Mon 05/12/16	Wed 07/12/16	
60	1.4.25.2 Report	100%	0 days	Thu 08/12/16	Thu 08/12/16	◆ 08/12
61	1.4.25.3 Test 2	100%	3 days	Mon 19/12/16	Wed 21/12/16	
62	1.4.25.4 Report	100%	0 days	Thu 22/12/16	Thu 22/12/16	◆ 22/12
63	1.4.25.5 Test 3	100%	3 days	Mon 02/01/17	Wed 04/01/17	

Project: JFH & Westaway Court Programme (Option 4)
Date: Thu 12/10/17

Task		Project Summary		Manual Task		Start-only		Deadline	
Split		Inactive Task		Duration-only		Finish-only		Progress	
Milestone		Inactive Milestone		Manual Summary Rollup		External Tasks		Manual Progress	
Summary		Inactive Summary		Manual Summary		External Milestone			

ID	Task Name	% Complete	Duration	Start	Finish	
64	1.4.25.6 Report	100%	1 day	Thu 05/01/17	Thu 05/01/17	
65	1.4.25.7 Test 4	100%	3 days	Mon 16/01/17	Wed 18/01/17	
66	1.4.25.8 Report	100%	0 days	Thu 19/01/17	Thu 19/01/17	19/01
67	1.4.25.9 Test 5	100%	3 days	Mon 30/01/17	Wed 01/02/17	
68	1.4.25.10 Report	100%	0 days	Thu 02/02/17	Thu 02/02/17	02/02
69	1.4.26 Preparation of SOA	100%	3.2 wks	Mon 16/01/17	Mon 06/02/17	
70	1.4.26.1 Calculation of Room Quantities from modelling data	100%	3 days	Mon 16/01/17	Wed 18/01/17	
71	1.4.26.2 First cut Schedule of Accommodation	100%	5 days	Thu 19/01/17	Wed 25/01/17	
72	1.4.26.3 Presentation pack issue for workshop review	100%	2 days	Thu 26/01/17	Fri 27/01/17	
73	1.4.26.4 SOA Workshop	100%	1 day	Tue 31/01/17	Tue 31/01/17	
74	1.4.26.5 SOA Interim sign off	100%	0 days	Tue 31/01/17	Tue 31/01/17	31/01
75	1.4.26.6 Prepare Phase 3 End stage report	100%	4 days	Wed 01/02/17	Mon 06/02/17	
76	1.4.26.7 Issue End phase report	100%	0 days	Mon 06/02/17	Mon 06/02/17	06/02
77	1.5 Phase 4 - Benefits collation	100%	14.4 wks	Mon 05/12/16	Tue 14/03/17	
78	1.5.1 EY - preparation of OBC cost model approach [4x]	100%	25 days	Mon 05/12/16	Fri 06/01/17	
79	1.5.2 EY - OBC cost modelling proposal [4y]	100%	10 days	Mon 09/01/17	Fri 20/01/17	
80	1.5.3 EY - Prepare and submit 'OBC Model Inputs' report	100%	2 days	Mon 23/01/17	Tue 24/01/17	
81	1.5.4 EY - Prepare OBC modelling presentation	100%	4 days	Wed 25/01/17	Mon 30/01/17	
82	1.5.5 Issue Presentation Pack	100%	0 days	Tue 31/01/17	Tue 31/01/17	31/01
83	1.5.6 Project Board presentation	100%	1 day	Mon 06/03/17	Mon 06/03/17	
84	1.5.7 Prepare Phase 4 End Stage Report	100%	4 days	Tue 07/03/17	Fri 10/03/17	
85	1.5.8 Issue End stage report	100%	0 days	Sun 12/03/17	Sun 12/03/17	12/03
86	1.5.9 Programme end - Forward feed of information to D8 - Pack	100%	2 days	Mon 13/03/17	Tue 14/03/17	
87	2 JFH RIBA Plan of Work Stages	30%	527.6 wks	Mon 17/10/16	Wed 25/11/26	
88	2.1 RIBA Stage 1 - Prepare / Brief (D3)	100%	28 wks	Mon 17/10/16	Fri 28/04/17	
89	2.1.1 Complete RIBA Stage 1	100%	0 days	Thu 12/01/17	Thu 12/01/17	12/01
90	2.1.2 Detailed Procurement Strategy (D7)	100%	28 wks	Mon 17/10/16	Fri 28/04/17	
91	2.1.2.1 Preparation of the Detailed Procurement Strategy (B703)	100%	20 days	Mon 30/01/17	Fri 24/02/17	
92	2.1.2.2 Review of the Detailed Procurement Strategy (B704)	100%	12 days	Mon 27/02/17	Tue 14/03/17	
93	2.1.2.3 Actions Arising from the Detailed Procurement Strategy (B705)	100%	5 days	Wed 15/03/17	Tue 21/03/17	
94	2.1.2.4 Delivery of the Detailed Procurement Strategy (B707)	100%	23 days	Wed 29/03/17	Fri 28/04/17	
95	2.1.2.5 Presentation and Approval of the Detailed Procurement Strategy (B706)	100%	1 day	Mon 17/10/16	Mon 17/10/16	
96	2.1.3 Feasibility Studies (D4) complete	100%	0 days	Thu 12/01/17	Thu 12/01/17	12/01

Project: JFH & Westaway Court Programme (Option 4)
Date: Thu 12/10/17

Task		Project Summary		Manual Task		Start-only		Deadline	
Split		Inactive Task		Duration-only		Finish-only		Progress	
Milestone		Inactive Milestone		Manual Summary Rollup		External Tasks		Manual Progress	
Summary		Inactive Summary		Manual Summary		External Milestone			

ID	Task Name	% Complete	Duration	Start	Finish	
97	2.1.4 Options Appraisal Report (D5)	100%	11.4 wks	Thu 12/01/17	Fri 31/03/17	
98	2.1.4.1 Consideration of the Options Available to the Contacting Authority (B502)	100%	0 days	Thu 12/01/17	Thu 12/01/17	12/01
99	2.1.4.2 Service Risk Assessment and Prioritisation Exercise	100%	5 days	Thu 12/01/17	Wed 18/01/17	
100	2.1.4.3 Setting-Out the collective intent of Acute Services	100%	10 days	Thu 19/01/17	Wed 01/02/17	
101	2.1.4.4 Setting-Out departmental grouping and Patient Flows	100%	14 days	Thu 02/02/17	Tue 21/02/17	
102	2.1.4.5 Benchmarked Cost Comparison Analysis	100%	4 days	Wed 22/02/17	Mon 27/02/17	
103	2.1.4.6 Commentary on the Key Cost Pressures and Drivers	100%	3 days	Tue 28/02/17	Thu 02/03/17	
104	2.1.4.7 Management of the Key Cost Pressures and Drivers	100%	4 days	Fri 03/03/17	Wed 08/03/17	
105	2.1.4.8 Application of the agreed protocols adopted on the project for Risk, Value and Quality Management (B502)	100%	7 days	Thu 09/03/17	Fri 17/03/17	
106	2.1.4.9 Recommended and Preferred Option for the Advancement of the Site	100%	0 days	Fri 17/03/17	Fri 17/03/17	17/03
107	2.1.4.10 Consultation with Key Stakeholders (B503)	100%	10 days	Mon 20/03/17	Fri 31/03/17	
108	2.1.4.11 Options Appraisal Report (B504)	100%	0 days	Fri 31/03/17	Fri 31/03/17	31/03
109	2.2 EIA Produce, Review, Comment & Update	80%	51.8 wks	Mon 17/10/16	Thu 12/10/17	
110	2.2.1 EIA Chapters (D9)	84%	36.6 wks	Mon 17/10/16	Wed 28/06/17	
111	2.2.1.1 Introductory chapters	100%	6.6 wks	Fri 31/03/17	Tue 16/05/17	
112	2.2.1.1.1 Receive 1-500 drawings / DCP (height / massing) and Demolition & Construction Plans	100%	0 days	Fri 31/03/17	Fri 31/03/17	31/03
113	2.2.1.1.2 Introduction	100%	10 days	Wed 03/05/17	Tue 16/05/17	KEP,Gleeds
114	2.2.1.1.3 Vision for projects	100%	10 days	Wed 03/05/17	Tue 16/05/17	KEP,Gleeds,Rowney Sharman,Arup
115	2.2.1.1.4 Explanation of proposed development	100%	10 days	Wed 03/05/17	Tue 16/05/17	KEP,Gleeds,Rowney Sharman,Arup
116	2.2.1.1.5 Approach to EIA / Methodology	100%	10 days	Wed 03/05/17	Tue 16/05/17	KEP
117	2.2.1.1.6 Formal response from Scoping Report	100%	0 days	Fri 14/04/17	Fri 14/04/17	14/04
118	2.2.1.1.7 Consultation explanation of process & report	100%	11 days	Tue 02/05/17	Tue 16/05/17	KEP,Gleeds
119	2.2.1.1.8 Issue Introductory Chapter for 3rd Party Review	100%	0 days	Tue 16/05/17	Tue 16/05/17	16/05
120	2.2.1.2 Legal Review of Chapters	0%	3 wks	Wed 17/05/17	Tue 06/06/17	
121	2.2.1.2.1 Legal Review of EIS	0%	10 days	Wed 17/05/17	Tue 30/05/17	
122	2.2.1.2.2 Incorporate Legal Review Comments	0%	5 days	Wed 31/05/17	Tue 06/06/17	
123	2.2.1.3 Geology, hydrogeology and contamination	100%	14.4 wks	Thu 12/01/17	Fri 21/04/17	
124	2.2.1.3.1 Agree scope of assessment	100%	47 days	Thu 12/01/17	Fri 17/03/17	Arup
125	2.2.1.3.2 Baseline reporting	100%	5 days	Mon 20/03/17	Fri 24/03/17	

Project: JFH & Westaway Court Programme (Option 4)
Date: Thu 12/10/17

Task		Project Summary		Manual Task		Start-only		Deadline	
Split		Inactive Task		Duration-only		Finish-only		Progress	
Milestone		Inactive Milestone		Manual Summary Rollup		External Tasks		Manual Progress	
Summary		Inactive Summary		Manual Summary		External Milestone			

ID	Task Name	% Comple	Duration	Start	Finish	
126	2.2.1.3.3 EIS chapter preparation	100%	5 days	Mon 27/03/17	Fri 31/03/17	
127	2.2.1.3.4 Issue Introductory Chapters for 3rd Party Review	100%	0 days	Fri 31/03/17	Fri 31/03/17	31/03
128	2.2.1.3.5 Legal Review of Chapters	100%	3 wks	Mon 03/04/17	Fri 21/04/17	
129	2.2.1.3.5.1 Legal review of EIS	100%	10 days	Mon 03/04/17	Fri 14/04/17	
130	2.2.1.3.5.2 Incorporate Legal Review Comments	100%	5 days	Mon 17/04/17	Fri 21/04/17	
131	2.2.1.4 Water, flooding and drainage	100%	19.4 wks	Thu 12/01/17	Fri 26/05/17	
132	2.2.1.4.1 Agree scope of assessment	100%	42 days	Thu 12/01/17	Fri 10/03/17	Arup
133	2.2.1.4.2 LiDAR Flight	100%	10 days	Mon 13/03/17	Fri 24/03/17	Arup
134	2.2.1.4.3 Modelling of flooding	100%	10 days	Mon 27/03/17	Fri 07/04/17	Arup
135	2.2.1.4.4 Flood risk assessment (including coastal flooding)	100%	8 days	Mon 10/04/17	Wed 19/04/17	Arup
136	2.2.1.4.5 EIS chapter preparation	100%	12 days	Thu 20/04/17	Fri 05/05/17	
137	2.2.1.4.6 Issue Introductory Chapters for 3rd Party Review	100%	0 days	Fri 05/05/17	Fri 05/05/17	05/05
138	2.2.1.4.7 Legal Review of Chapters	100%	3 wks	Mon 08/05/17	Fri 26/05/17	
139	2.2.1.4.7.1 Legal review of EIS	100%	10 days	Mon 08/05/17	Fri 19/05/17	
140	2.2.1.4.7.2 Incorporate Legal Review Comments	100%	5 days	Mon 22/05/17	Fri 26/05/17	
141	2.2.1.5 Biodiversity	100%	15.4 wks	Thu 12/01/17	Fri 28/04/17	
142	2.2.1.5.1 Agree scope of assessment	100%	30 days	Thu 12/01/17	Wed 22/02/17	Arup
143	2.2.1.5.2 Extended Phase I survey and reporting	100%	2 days	Thu 23/02/17	Fri 24/02/17	
144	2.2.1.5.3 Further discussion with SoJ re. Approach to Bats in CPO Properties	100%	25 days	Thu 12/01/17	Wed 15/02/17	
145	2.2.1.5.4 Further ecological survey	100%	5 days	Mon 27/02/17	Fri 03/03/17	
146	2.2.1.5.5 Baseline reporting	100%	10 days	Mon 06/03/17	Fri 17/03/17	
147	2.2.1.5.6 Assessment of the effects	100%	10 days	Mon 20/03/17	Fri 31/03/17	
148	2.2.1.5.7 EIS chapter preparation	100%	5 days	Mon 03/04/17	Fri 07/04/17	
149	2.2.1.5.8 Issue Introductory Chapters for 3rd Party Review	100%	0 days	Fri 07/04/17	Fri 07/04/17	07/04
150	2.2.1.5.9 Legal Review of Chapters	100%	3 wks	Mon 10/04/17	Fri 28/04/17	
151	2.2.1.5.9.1 Legal review of EIS	100%	10 days	Mon 10/04/17	Fri 21/04/17	
152	2.2.1.5.9.2 Incorporate Legal Review Comments	100%	5 days	Mon 24/04/17	Fri 28/04/17	
153	2.2.1.6 Townscape and Visual Impact	90%	11.6 wks	Mon 13/03/17	Wed 31/05/17	
154	2.2.1.6.1 Receive Required Items	100%	0 days	Fri 31/03/17	Fri 31/03/17	31/03
155	2.2.1.6.2 Arup submit scope and fee proposal	100%	0 days	Mon 13/03/17	Mon 13/03/17	13/03
156	2.2.1.6.3 Client Agree and Instruct	100%	10 days	Mon 13/03/17	Fri 24/03/17	
157	2.2.1.6.4 Agree scope of assessment	100%	5 days	Mon 27/03/17	Fri 31/03/17	
158	2.2.1.6.5 View point photographs - site visit	100%	5 days	Mon 03/04/17	Fri 07/04/17	
159	2.2.1.6.6 Preparation of Views	100%	10 days	Mon 10/04/17	Fri 21/04/17	
160	2.2.1.6.7 Baseline reporting	100%	5 days	Mon 24/04/17	Fri 28/04/17	
161	2.2.1.6.8 Assessment of effects	100%	5 days	Mon 01/05/17	Fri 05/05/17	

Project: JFH & Westaway Court Programme (Option 4)
Date: Thu 12/10/17

Task		Project Summary		Manual Task		Start-only		Deadline	
Split		Inactive Task		Duration-only		Finish-only		Progress	
Milestone		Inactive Milestone		Manual Summary Rollup		External Tasks		Manual Progress	
Summary		Inactive Summary		Manual Summary		External Milestone			

ID	Task Name	% Comple	Duration	Start	Finish	
162	2.2.1.6.9 EIS chapter preparation	100%	5 days	Mon 08/05/17	Fri 12/05/17	
163	2.2.1.6.10 Issue Introductory Chapters for 3rd Party Review	100%	0 days	Fri 12/05/17	Fri 12/05/17	
164	2.2.1.6.11 Legal Review of Chapters	55%	2.6 wks	Mon 15/05/17	Wed 31/05/17	
165	2.2.1.6.11.1 Legal review of EIS (Rowena to define requirements)	72%	10 days	Mon 15/05/17	Fri 26/05/17	
166	2.2.1.6.11.2 Incorporate Legal Review Comments	0%	3 days	Mon 29/05/17	Wed 31/05/17	
167	2.2.1.7 Archaeology and cultural heritage	94%	13 wks	Thu 12/01/17	Wed 12/04/17	
168	2.2.1.7.1 Agree scope of assessment	100%	32 days	Thu 12/01/17	Fri 24/02/17	
169	2.2.1.7.2 Desk based assessment	100%	5 days	Mon 27/02/17	Fri 03/03/17	
170	2.2.1.7.3 Baseline reporting	100%	5 days	Mon 06/03/17	Fri 10/03/17	
171	2.2.1.7.4 Assessment of effects	100%	5 days	Mon 13/03/17	Fri 17/03/17	
172	2.2.1.7.5 EIS chapter preparation	100%	5 days	Mon 20/03/17	Fri 24/03/17	
173	2.2.1.7.6 Issue Introductory Chapters for 3rd Party Review	100%	0 days	Fri 24/03/17	Fri 24/03/17	
174	2.2.1.7.7 Legal Review of Chapters	69%	2.6 wks	Mon 27/03/17	Wed 12/04/17	
175	2.2.1.7.7.1 Legal review of EIS	90%	10 days	Mon 27/03/17	Fri 07/04/17	
176	2.2.1.7.7.2 Incorporate Legal Review Comments	0%	3 days	Mon 10/04/17	Wed 12/04/17	
177	2.2.1.8 Site Waste	100%	16.6 wks	Thu 12/01/17	Mon 08/05/17	
178	2.2.1.8.1 Agree scope of assessment	100%	35 days	Thu 12/01/17	Wed 01/03/17	
179	2.2.1.8.2 Review of existing waste management systems	100%	5 days	Thu 02/03/17	Wed 08/03/17	
180	2.2.1.8.3 Identification of predicted waste volumes/type	100%	10 days	Thu 02/03/17	Wed 15/03/17	
181	2.2.1.8.4 Baseline reporting	100%	5 days	Thu 16/03/17	Wed 22/03/17	
182	2.2.1.8.5 Assessment of effects	100%	10 days	Thu 23/03/17	Wed 05/04/17	
183	2.2.1.8.6 Prepare framework site waste management plan	100%	5 days	Thu 06/04/17	Wed 12/04/17	
184	2.2.1.8.7 EIS chapter preparation	100%	5 days	Thu 13/04/17	Wed 19/04/17	
185	2.2.1.8.8 Issue Introductory Chapters for 3rd Party Review	100%	0 days	Wed 19/04/17	Wed 19/04/17	
186	2.2.1.8.9 Legal Review of Chapters	100%	2.6 wks	Thu 20/04/17	Mon 08/05/17	
187	2.2.1.8.9.1 Legal review of EIS	100%	10 days	Thu 20/04/17	Wed 03/05/17	
188	2.2.1.8.9.2 Incorporate Legal Review Comments	100%	3 days	Thu 04/05/17	Mon 08/05/17	
189	2.2.1.9 Transport	80%	23.6 wks	Thu 12/01/17	Mon 26/06/17	
190	2.2.1.9.1 Agree scope of assessment	100%	35 days	Thu 12/01/17	Wed 01/03/17	
191	2.2.1.9.2 Undertake surveys	100%	0 days	Wed 01/03/17	Wed 01/03/17	
192	2.2.1.9.3 Receive Required Items	100%	0 days	Fri 31/03/17	Fri 31/03/17	
193	2.2.1.9.4 Generate transport information for other specialist	100%	5 days	Fri 31/03/17	Thu 06/04/17	
194	2.2.1.9.5 Transport Assessment and EIS Chapter	89%	47 days	Fri 31/03/17	Mon 05/06/17	
195	2.2.1.9.6 Issue Introductory Chapters for 3rd Party Review	0%	0 days	Mon 05/06/17	Mon 05/06/17	
196	2.2.1.9.7 Legal Review of Chapters	0%	3 wks	Tue 06/06/17	Mon 26/06/17	

Project: JFH & Westaway Court Programme (Option 4) Date: Thu 12/10/17	Task		Project Summary		Manual Task		Start-only		Deadline	
	Split		Inactive Task		Duration-only		Finish-only		Progress	
	Milestone		Inactive Milestone		Manual Summary Rollup		External Tasks		Manual Progress	
	Summary		Inactive Summary		Manual Summary		External Milestone			

ID	Task Name	% Complete	Duration	Start	Finish	
197	2.2.1.9.7.1 Legal review of EIS	0%	10 days	Tue 06/06/17	Mon 19/06/17	
198	2.2.1.9.7.2 Incorporate Legal Review Comments	0%	5 days	Tue 20/06/17	Mon 26/06/17	
199	2.2.1.10 Noise and Vibration	100%	16.2 wks	Thu 12/01/17	Thu 04/05/17	
200	2.2.1.10.1 Agree scope of assessment	100%	45 days	Thu 12/01/17	Wed 15/03/17	
201	2.2.1.10.2 Noise survey	100%	0 days	Wed 22/02/17	Wed 22/02/17	
202	2.2.1.10.3 Receive Traffic Data from Transport	100%	0 days	Thu 06/04/17	Thu 06/04/17	
203	2.2.1.10.4 Receive Required Items	100%	0 days	Fri 31/03/17	Fri 31/03/17	
204	2.2.1.10.5 EIS chapter preparation in absence of required ite	100%	28 days	Wed 22/02/17	Fri 31/03/17	
205	2.2.1.10.6 EIS chapter preparation when required items recd	100%	5 days	Fri 07/04/17	Thu 13/04/17	
206	2.2.1.10.7 Issue Introductory Chapters for 3rd Party Review	100%	0 days	Thu 13/04/17	Thu 13/04/17	
207	2.2.1.10.8 Legal Review of Chapters	100%	3 wks	Fri 14/04/17	Thu 04/05/17	
208	2.2.1.10.8.1 Legal review of EIS	100%	10 days	Fri 14/04/17	Thu 27/04/17	
209	2.2.1.10.8.2 Incorporate Legal Review Comments	100%	5 days	Fri 28/04/17	Thu 04/05/17	
210	2.2.1.11 Air Quality	100%	18.2 wks	Thu 12/01/17	Thu 18/05/17	
211	2.2.1.11.1 Agree scope of assessment	100%	35 days	Thu 12/01/17	Wed 01/03/17	
212	2.2.1.11.2 Obtain air quality data from SoJ	100%	0 days	Wed 01/03/17	Wed 01/03/17	
213	2.2.1.11.3 Receive Traffic Data from Transport	100%	0 days	Thu 06/04/17	Thu 06/04/17	
214	2.2.1.11.4 Receive proposed ventilation information	100%	0 days	Fri 31/03/17	Fri 31/03/17	
215	2.2.1.11.5 Baseline reporting	100%	5 days	Fri 07/04/17	Thu 13/04/17	
216	2.2.1.11.6 Assessment of effects	100%	5 days	Fri 14/04/17	Thu 20/04/17	
217	2.2.1.11.7 EIS chapter preparation	100%	5 days	Fri 21/04/17	Thu 27/04/17	
218	2.2.1.11.8 Issue Introductory Chapters for 3rd Party Review	100%	0 days	Thu 27/04/17	Thu 27/04/17	
219	2.2.1.11.9 Legal Review of Chapters	100%	3 wks	Fri 28/04/17	Thu 18/05/17	
220	2.2.1.11.9.1 Legal review of EIS	100%	10 days	Fri 28/04/17	Thu 11/05/17	
221	2.2.1.11.9.2 Incorporate Legal Review Comments	100%	5 days	Fri 12/05/17	Thu 18/05/17	
222	2.2.1.12 Wind Assessment	80%	16.2 wks	Thu 12/01/17	Thu 04/05/17	
223	2.2.1.12.1 Agree scope of assessment	100%	35 days	Thu 12/01/17	Wed 01/03/17	
224	2.2.1.12.2 Receive Required Items	100%	0 days	Fri 31/03/17	Fri 31/03/17	
225	2.2.1.12.3 Wind climate analysis	100%	20 days	Thu 02/03/17	Wed 29/03/17	
226	2.2.1.12.4 Wind desk study	100%	5 days	Fri 31/03/17	Thu 06/04/17	
227	2.2.1.12.5 EIS chapter preparation	80%	5 days	Fri 07/04/17	Thu 13/04/17	
228	2.2.1.12.6 Issue Introductory Chapters for 3rd Party Review	0%	0 days	Thu 13/04/17	Thu 13/04/17	
229	2.2.1.12.7 Legal Review of Chapters	0%	3 wks	Fri 14/04/17	Thu 04/05/17	
230	2.2.1.12.7.1 Legal review of EIS	0%	10 days	Fri 14/04/17	Thu 27/04/17	
231	2.2.1.12.7.2 Incorporate Legal Review Comments	0%	5 days	Fri 28/04/17	Thu 04/05/17	
232	2.2.1.13 Socio-economic	90%	22.4 wks	Thu 12/01/17	Fri 16/06/17	
233	2.2.1.13.1 Agree scope of assessment	100%	43 days	Thu 12/01/17	Mon 13/03/17	

Project: JFH & Westaway Court Programme (Option 4)
Date: Thu 12/10/17

Task		Project Summary		Manual Task		Start-only		Deadline	
Split		Inactive Task		Duration-only		Finish-only		Progress	
Milestone		Inactive Milestone		Manual Summary Rollup		External Tasks		Manual Progress	
Summary		Inactive Summary		Manual Summary		External Milestone			

ID	Task Name	% Comple	Duration	Start	Finish	
234	2.2.1.13.2 Arup submit scope and fee proposal	100%	0 days	Mon 13/03/17	Mon 13/03/17	13/03
235	2.2.1.13.3 Client Agree and Instruct	100%	2 days	Tue 14/03/17	Wed 15/03/17	
236	2.2.1.13.4 Baseline reporting	100%	29 days	Thu 16/03/17	Tue 25/04/17	
237	2.2.1.13.5 EIS chapter preparation	80%	23 days	Wed 26/04/17	Fri 26/05/17	
238	2.2.1.13.6 Issue Introductory Chapters for 3rd Party Rev	0%	0 days	Fri 26/05/17	Fri 26/05/17	26/05
239	2.2.1.13.7 Legal Review of Chapters	0%	3 wks	Mon 29/05/17	Fri 16/06/17	
240	2.2.1.13.7.1 Legal review of EIS	0%	10 days	Mon 29/05/17	Fri 09/06/17	
241	2.2.1.13.7.2 Incorporate Legal Review Comments	0%	5 days	Mon 12/06/17	Fri 16/06/17	
242	2.2.1.13.8 Health	100%	16.6 wks	Thu 12/01/17	Mon 08/05/17	
243	2.2.1.13.8.1 Agree scope of assessment	100%	43 days	Thu 12/01/17	Mon 13/03/17	
244	2.2.1.13.8.2 Obtain Data & carry out assessment	100%	10 days	Tue 14/03/17	Mon 27/03/17	
245	2.2.1.13.8.3 EIS chapter preparation	100%	15 days	Tue 28/03/17	Mon 17/04/17	
246	2.2.1.13.8.4 Issue Introductory Chapters for 3rd Party Rev	100%	0 days	Mon 17/04/17	Mon 17/04/17	17/04
247	2.2.1.13.8.5 Legal Review of Chapters	100%	3 wks	Tue 18/04/17	Mon 08/05/17	
248	2.2.1.13.8.5.1 Legal review of EIS	100%	10 days	Tue 18/04/17	Mon 01/05/17	
249	2.2.1.13.8.5.2 Incorporate Legal Review Comments	100%	5 days	Tue 02/05/17	Mon 08/05/17	
250	2.2.1.14 Sunlight Assessment	80%	15.2 wks	Thu 12/01/17	Thu 27/04/17	
251	2.2.1.14.1 Agree scope of assessment	100%	44 days	Thu 12/01/17	Tue 14/03/17	Hassell
252	2.2.1.14.2 Sunlight analysis	100%	7 days	Wed 15/03/17	Thu 23/03/17	
253	2.2.1.14.3 Sunlight desk study	100%	5 days	Fri 24/03/17	Thu 30/03/17	
254	2.2.1.14.4 EIS chapter preparation	100%	5 days	Fri 31/03/17	Thu 06/04/17	
255	2.2.1.14.5 Issue Introductory Chapters for 3rd Party Review	100%	0 days	Thu 06/04/17	Thu 06/04/17	06/04
256	2.2.1.14.6 Legal Review of Chapters	0%	3 wks	Fri 07/04/17	Thu 27/04/17	
257	2.2.1.14.6.1 Legal review of EIS	0%	10 days	Fri 07/04/17	Thu 20/04/17	
258	2.2.1.14.6.2 Incorporate Legal Review Comments	0%	5 days	Fri 21/04/17	Thu 27/04/17	
259	2.2.1.15 Daylight Assessment	53%	6.4 wks	Wed 15/03/17	Thu 27/04/17	
260	2.2.1.15.1 Daylight analysis	100%	7 days	Wed 15/03/17	Thu 23/03/17	
261	2.2.1.15.2 Daylight desk study	100%	5 days	Fri 24/03/17	Thu 30/03/17	
262	2.2.1.15.3 EIS chapter preparation	100%	5 days	Fri 31/03/17	Thu 06/04/17	
263	2.2.1.15.4 Issue Introductory Chapters for 3rd Party Review	100%	0 days	Thu 06/04/17	Thu 06/04/17	06/04
264	2.2.1.15.5 Legal Review of Chapters	0%	3 wks	Fri 07/04/17	Thu 27/04/17	
265	2.2.1.15.5.1 Legal review of EIS	0%	10 days	Fri 07/04/17	Thu 20/04/17	
266	2.2.1.15.5.2 Incorporate Legal Review Comments	0%	5 days	Fri 21/04/17	Thu 27/04/17	
267	2.2.1.16 Economic	73%	16.6 wks	Thu 12/01/17	Mon 08/05/17	
268	2.2.1.16.1 Agree scope of assessment	100%	43 days	Thu 12/01/17	Mon 13/03/17	Gleeds
269	2.2.1.16.2 Obtain Data & carry out assessment	100%	10 days	Tue 14/03/17	Mon 27/03/17	

Project: JFH & Westaway Court Programme (Option 4)
Date: Thu 12/10/17

Task		Project Summary		Manual Task		Start-only		Deadline	
Split		Inactive Task		Duration-only		Finish-only		Progress	
Milestone		Inactive Milestone		Manual Summary Rollup		External Tasks		Manual Progress	
Summary		Inactive Summary		Manual Summary		External Milestone			

ID	Task Name	% Comple	Duration	Start	Finish	
270	2.2.1.16.3 EIS chapter preparation	53%	15 days	Tue 28/03/17	Mon 17/04/17	
271	2.2.1.16.4 Issue Introductory Chapters for 3rd Party Review	0%	0 days	Mon 17/04/17	Mon 17/04/17	17/04
272	2.2.1.16.5 Legal Review of Chapters	0%	3 wks	Tue 18/04/17	Mon 08/05/17	
273	2.2.1.16.5.1 Legal review of EIS	0%	10 days	Tue 18/04/17	Mon 01/05/17	
274	2.2.1.16.5.2 Incorporate Legal Review Comments	0%	5 days	Tue 02/05/17	Mon 08/05/17	
275	2.2.1.17 Crime	73%	16.6 wks	Thu 12/01/17	Mon 08/05/17	KEP,Hassell
276	2.2.1.17.1 Agree scope of assessment	100%	43 days	Thu 12/01/17	Mon 13/03/17	
277	2.2.1.17.2 Obtain Data & carry out assessment	100%	10 days	Tue 14/03/17	Mon 27/03/17	
278	2.2.1.17.3 EIS chapter preparation	53%	15 days	Tue 28/03/17	Mon 17/04/17	
279	2.2.1.17.4 Issue Introductory Chapters for 3rd Party Review	0%	0 days	Mon 17/04/17	Mon 17/04/17	17/04
280	2.2.1.17.5 Legal Review of Chapters	0%	3 wks	Tue 18/04/17	Mon 08/05/17	
281	2.2.1.17.5.1 Legal review of EIS	0%	10 days	Tue 18/04/17	Mon 01/05/17	
282	2.2.1.17.5.2 Incorporate Legal Review Comments	0%	5 days	Tue 02/05/17	Mon 08/05/17	
283	2.2.1.18 Tourism	67%	24 wks	Thu 12/01/17	Wed 28/06/17	KEP
284	2.2.1.18.1 Agree scope of assessment	100%	80 days	Thu 12/01/17	Wed 03/05/17	
285	2.2.1.18.2 Obtain Data & carry out assessment	0%	10 days	Thu 04/05/17	Wed 17/05/17	
286	2.2.1.18.3 EIS chapter preparation	0%	15 days	Thu 18/05/17	Wed 07/06/17	
287	2.2.1.18.4 Issue Introductory Chapters for 3rd Party Review	0%	0 days	Wed 07/06/17	Wed 07/06/17	07/06
288	2.2.1.18.5 Legal Review of Chapters	0%	3 wks	Thu 08/06/17	Wed 28/06/17	
289	2.2.1.18.5.1 Legal review of EIS	0%	10 days	Thu 08/06/17	Wed 21/06/17	
290	2.2.1.18.5.2 Incorporate Legal Review Comments	0%	5 days	Thu 22/06/17	Wed 28/06/17	
291	2.2.1.19 Housing	73%	16.6 wks	Thu 12/01/17	Mon 08/05/17	KEP
292	2.2.1.19.1 Agree scope of assessment	100%	43 days	Thu 12/01/17	Mon 13/03/17	
293	2.2.1.19.2 Obtain Data & carry out assessment	100%	10 days	Tue 14/03/17	Mon 27/03/17	
294	2.2.1.19.3 EIS chapter preparation	53%	15 days	Tue 28/03/17	Mon 17/04/17	
295	2.2.1.19.4 Issue Introductory Chapters for 3rd Party Review	0%	0 days	Mon 17/04/17	Mon 17/04/17	17/04
296	2.2.1.19.5 Legal Review of Chapters	0%	3 wks	Tue 18/04/17	Mon 08/05/17	
297	2.2.1.19.5.1 Legal review of EIS	0%	10 days	Tue 18/04/17	Mon 01/05/17	
298	2.2.1.19.5.2 Incorporate Legal Review Comments	0%	5 days	Tue 02/05/17	Mon 08/05/17	
299	2.2.1.20 Framework public realm strategy (linked to DCP)	0%	2 days	Fri 26/05/17	Tue 30/05/17	Hassell,KEP
300	2.2.1.21 Residual Effects	80%	5 days	Mon 24/10/16	Fri 28/10/16	KEP
301	2.2.1.22 Cumulative effects	80%	10.6 wks	Thu 12/01/17	Mon 27/03/17	
302	2.2.1.22.1 Agree scope of assessment	90%	47 days	Thu 12/01/17	Fri 17/03/17	KEP
303	2.2.1.22.2 Coordination with EIA team on cumulative effects	0%	3 days	Mon 20/03/17	Wed 22/03/17	
304	2.2.1.22.3 EIS chapter preparation	0%	3 days	Thu 23/03/17	Mon 27/03/17	

Project: JFH & Westaway Court Programme (Option 4) Date: Thu 12/10/17	Task		Project Summary		Manual Task		Start-only		Deadline	
	Split		Inactive Task		Duration-only		Finish-only		Progress	
	Milestone		Inactive Milestone		Manual Summary Rollup		External Tasks		Manual Progress	
	Summary		Inactive Summary		Manual Summary		External Milestone			

ID	Task Name	% Complete	Duration	Start	Finish	
305	2.2.1.23 Mitigation requirements	0%	3 days	Wed 19/10/16	Fri 21/10/16	
306	2.2.1.24 Non Technical Summary (NTS)	0%	5 days	Mon 17/10/16	Fri 21/10/16	
307	2.2.1.25 Draft EIS Compilation	0%	1 wk	Tue 28/03/17	Mon 03/04/17	
308	2.2.1.25.1 Compile all chapters into EIS document	0%	3 days	Tue 28/03/17	Thu 30/03/17	
309	2.2.1.25.2 Consistency review	0%	2 days	Fri 31/03/17	Mon 03/04/17	
310	2.2.1.26 EIS Completion	0%	0 days	Mon 03/04/17	Mon 03/04/17	
311	2.2.1.27 Draft EIA Review & update	0%	10 days	Mon 17/10/16	Fri 28/10/16	
312	2.2.1.28 Incorporate comments	0%	10 days	Mon 31/10/16	Fri 11/11/16	
313	2.2.1.29 Incorporate Photo Montage - Ben	0%	1 day	Fri 09/06/17	Fri 09/06/17	
314	2.2.1.30 EIA Completion	0%	0 days	Mon 03/04/17	Mon 03/04/17	
315	2.2.2 Approval and Consultation on Planning Applications and DCP (B904)	22%	43 days	Mon 24/04/17	Wed 21/06/17	
316	2.2.3 Project Board briefing on Island	100%	1 day	Tue 13/06/17	Tue 13/06/17	
317	2.2.4 Draft chapters issue to SoJ	100%	1 day	Tue 13/06/17	Tue 13/06/17	
318	2.2.5 Submission and Approval of Planning Application for Hospital, DCP and Public Realm (B905)	0%	1 day	Thu 22/06/17	Thu 22/06/17	
319	2.2.6 Westaway Full Planning Application	0%	60 days	Fri 21/07/17	Thu 12/10/17	
320	2.3 RIBA Stage 2 - Concept Design (D19)	22%	49 wks	Thu 12/01/17	Wed 20/12/17	
321	2.3.1 Outline Planning (D9)	84%	40.2 wks	Thu 12/01/17	Thu 19/10/17	
322	2.3.1.1 Preparation of the Outline Planning Application (B903)	84%	40.2 wks	Thu 12/01/17	Thu 19/10/17	
323	2.3.1.1.1 Planning Application Supporting Documents	100%	14.4 wks	Thu 12/01/17	Fri 21/04/17	
339	2.3.1.1.2 Planning Authority Approval	50%	17 wks	Fri 23/06/17	Thu 19/10/17	
340	2.3.1.1.2.1 Pre Inquiry Period (4 weeks)	100%	4 wks	Fri 23/06/17	Thu 20/07/17	
341	2.3.1.1.2.2 Public Inquiry (13 weeks)	35%	13 wks	Fri 21/07/17	Thu 19/10/17	
342	2.3.2 Project Execution Plan (PEP) (D6)	90%	20 wks	Mon 13/02/17	Fri 30/06/17	
347	2.3.3 1_500 SIGN OFF (Rev P37) & SOA V1.9.3 freeze	0%	22.18 wks	Wed 19/07/17	Wed 20/12/17	
564	2.4 Procurement	52%	41.8 wks	Wed 29/03/17	Mon 15/01/18	
565	2.4.1 Assurance Review - Procurement Strategy (D11)	100%	4.2 wks	Wed 29/03/17	Wed 26/04/17	
571	2.4.2 Approval of Tender Documents (D12)	99%	19.4 wks	Thu 27/04/17	Mon 11/09/17	
584	2.4.3 Pre Tender Activities	99%	18.2 wks	Fri 05/05/17	Fri 08/09/17	
600	2.4.4 ITT Tender and Negotiation (D14)	16%	22.2 wks	Mon 14/08/17	Mon 15/01/18	
601	2.4.4.1 Tender Period (B1308) ITT	27%	16.2 wks	Mon 14/08/17	Mon 04/12/17	
602	2.4.4.1.1 Issue Draft ITT Information and Questions	100%	0.2 wks	Mon 14/08/17	Mon 14/08/17	
603	2.4.4.1.2 ITT Workshop Prior to Release	100%	0 wks	Tue 22/08/17	Tue 22/08/17	
604	2.4.4.1.3 ITT revisions post workshop	100%	0.6 wks	Wed 23/08/17	Fri 25/08/17	
605	2.4.4.1.4 Issue Second Pass ITT Documents	100%	0 wks	Fri 25/08/17	Fri 25/08/17	

Project: JFH & Westaway Court Programme (Option 4) Date: Thu 12/10/17	Task		Project Summary		Manual Task		Start-only		Deadline	
	Split		Inactive Task		Duration-only		Finish-only		Progress	
	Milestone		Inactive Milestone		Manual Summary Rollup		External Tasks		Manual Progress	
	Summary		Inactive Summary		Manual Summary		External Milestone			

ID	Task Name	% Complete	Duration	Start	Finish	
606	2.4.4.1.5 Latest date for ITT comments return	100%	1 wk	Mon 28/08/17	Fri 01/09/17	
607	2.4.4.1.6 Incorporation of ITT Final Comments and Works Information	100%	1 wk	Mon 04/09/17	Fri 08/09/17	
608	2.4.4.1.7 Issue of ITT documents list with RAG status	100%	0 wks	Mon 04/09/17	Mon 04/09/17	◆ 04/09
609	2.4.4.1.8 Issue of ITT Procurement Programme	100%	0 wks	Mon 04/09/17	Mon 04/09/17	◆ 04/09
610	2.4.4.1.9 Detailed Page Turn of ITT Documents/Comments	100%	0.3 wks	Thu 07/09/17	Fri 08/09/17	
611	2.4.4.1.10 GMS ITT Minor Amendments	100%	1 wk	Fri 08/09/17	Fri 15/09/17	
612	2.4.4.1.11 Issue Final ITT for Approval	0%	0 wks	Fri 15/09/17	Fri 15/09/17	◆ 15/09
613	2.4.4.1.12 ITT Approval Period by SoJ and Dfl	0%	1.1 wks	Fri 15/09/17	Fri 22/09/17	
614	2.4.4.1.13 Tenderer Workshops	0%	0.3 wks	Thu 21/09/17	Fri 22/09/17	
615	2.4.4.1.14 Submit Final ITT Comments to GMS	0%	0 wks	Fri 22/09/17	Fri 22/09/17	◆ 22/09
616	2.4.4.1.15 ITT Core Team Review of GMS Incorporated Amendments	0%	0 wks	Thu 28/09/17	Thu 28/09/17	◆ 28/09
617	2.4.4.1.16 Minor ITT Final Amendments by GMS	0%	1.5 wks	Thu 28/09/17	Mon 09/10/17	
618	2.4.4.1.17 ITT Release via DDLC on ProContract	0%	0 wks	Mon 09/10/17	Mon 09/10/17	◆ 09/10
619	2.4.4.1.18 ITT Response Period	0%	8 wks	Tue 10/10/17	Mon 04/12/17	
620	2.4.4.1.19 Tender Clarifications Deadline	0%	0 wks	Thu 05/10/17	Thu 05/10/17	◆ 05/10
621	2.4.4.1.20 Tender Submission Deadline	0%	0 wks	Wed 01/11/17	Wed 01/11/17	◆ 01/11
622	2.4.4.2 Post-Tender Period Activity (B1308)	0%	10.8 wks	Wed 01/11/17	Mon 15/01/18	
623	2.4.4.2.1 Review Tenders and Evaluate	0%	4 wks	Wed 01/11/17	Tue 28/11/17	
624	2.4.4.2.2 Conduct Interviews	0%	0.3 wks	Wed 06/12/17	Thu 07/12/17	
625	2.4.4.2.3 Consensus Workshop	0%	0 wks	Mon 11/12/17	Mon 11/12/17	◆ 11/12
626	2.4.4.2.4 Notify Results	0%	0 wks	Wed 13/12/17	Wed 13/12/17	◆ 13/12
627	2.4.4.2.5 Standstill (Challenge) Period	0%	3 wks	Wed 13/12/17	Wed 03/01/18	
628	2.4.4.2.6 Prepare PCSA Lump Sum with Activity Schedule	0%	3 wks	Wed 13/12/17	Wed 03/01/18	
629	2.4.4.2.7 PCSA Signed	0%	0 wks	Mon 15/01/18	Mon 15/01/18	◆ 15/01
630	2.4.4.2.8 Tender Stage 1 Complete	0%	0 days	Mon 15/01/18	Mon 15/01/18	◆ 15/01
631	2.4.5 Design Deliverables	29%	37 wks	Tue 04/04/17	Mon 18/12/17	
635	2.4.6 Works Information - SI & GI	35%	24.6 wks	Tue 04/07/17	Thu 21/12/17	
659	2.5 RIBA Stage 3 - Detailed Design (D20)	0%	55 wks	Thu 21/12/17	Wed 09/01/19	
660	2.5.1 Detail Design Planning and Further Site Appraisals	0%	15 wks	Thu 21/12/17	Wed 04/04/18	
663	2.5.2 Delivery of Detailed Design (B1904)	0%	52 wks	Thu 11/01/18	Wed 09/01/19	
679	2.6 RIBA 3 PLUS - Pricing Co-ordinated Design	0%	17 wks	Thu 10/01/19	Wed 08/05/19	
680	2.6.1 Pricing of Stage 3	0%	12 wks	Thu 10/01/19	Wed 03/04/19	
681	2.6.2 Continued refinement of RIBA Stage 3	0%	8 wks	Thu 10/01/19	Wed 06/03/19	
682	2.6.3 Return of RIBA Stage 3 pricing	0%	0 wks	Wed 03/04/19	Wed 03/04/19	◆ 03/04
683	2.6.4 Value Engineering period if required	0%	3 wks	Thu 04/04/19	Wed 24/04/19	

Project: JFH & Westaway Court Programme (Option 4) Date: Thu 12/10/17	Task		Project Summary		Manual Task		Start-only		Deadline	
	Split		Inactive Task		Duration-only		Finish-only		Progress	
	Milestone		Inactive Milestone		Manual Summary Rollup		External Tasks		Manual Progress	
	Summary		Inactive Summary		Manual Summary		External Milestone			

ID	Task Name	% Complete	Duration	Start	Finish	
684	2.6.5 Target Cost Negotiation upon receipt of RIBA 3 pricing	0%	4 wks	Thu 04/04/19	Wed 01/05/19	
685	2.6.6 Target Cost Agreement	0%	0 wks	Wed 01/05/19	Wed 01/05/19	01/05
686	2.6.7 Notice to Proceed (transfer from PCSA into Works) issued by contracting authority	0%	1 wk	Thu 02/05/19	Wed 08/05/19	Shepherd Wedderburn
687	2.7 JFH Pre-Contract Services Agreement	0%	68.4 wks	Mon 15/01/18	Wed 08/05/19	
688	2.7.1 PCSA Commencement	0%	0 wks	Mon 15/01/18	Mon 15/01/18	15/01
689	2.7.2 PCSA Completion	0%	0 wks	Wed 08/05/19	Wed 08/05/19	08/05
690	2.8 JFH Works Contract	0%	253.8 wks	Wed 08/05/19	Tue 19/03/24	
691	2.8.1 Works Contract Commencement	0%	0 wks	Wed 08/05/19	Wed 08/05/19	08/05
692	2.8.2 Works Contract Completion	0%	0 wks	Tue 19/03/24	Tue 19/03/24	19/03
693	2.9 RIBA Stage 4 Technical Production (D23)	0%	70.8 wks	Thu 10/01/19	Tue 19/05/20	
694	2.9.1 Phased Demolitions - Initial Works	0%	56 wks	Wed 24/04/19	Tue 19/05/20	
695	2.9.1.1 Demolitions Lead-in as Initial Works	0%	4 wks	Wed 24/04/19	Tue 21/05/19	
696	2.9.1.2 Phase 1	0%	2 mons	Wed 22/05/19	Tue 16/07/19	
697	2.9.1.3 Phase 2	0%	3 mons	Wed 17/07/19	Tue 08/10/19	
698	2.9.1.4 Phase 3	0%	3 mons	Wed 09/10/19	Tue 31/12/19	
699	2.9.1.5 Phase 4	0%	5 mons	Wed 01/01/20	Tue 19/05/20	
700	2.9.2 RIBA 4 Design Packages	0%	24 wks	Thu 10/01/19	Wed 26/06/19	
701	2.9.2.1 Package 1 -	0%	8 wks	Thu 10/01/19	Wed 06/03/19	
704	2.9.2.2 Package 2 -	0%	8 wks	Thu 07/02/19	Wed 03/04/19	
707	2.9.2.3 Package 3 -	0%	8 wks	Thu 07/03/19	Wed 01/05/19	
710	2.9.2.4 Package 4 -	0%	8 wks	Thu 04/04/19	Wed 29/05/19	
713	2.9.2.5 Package 5 -	0%	8 wks	Thu 02/05/19	Wed 26/06/19	
716	2.9.2.6 Package 6 -	0%	8 wks	Thu 10/01/19	Wed 06/03/19	
719	2.9.2.7 Package 7 -	0%	8 wks	Thu 07/02/19	Wed 03/04/19	
722	2.9.2.8 Package 8 -	0%	8 wks	Thu 07/03/19	Wed 01/05/19	
725	2.9.2.9 Package 9 -	0%	8 wks	Thu 04/04/19	Wed 29/05/19	
728	2.9.2.10 Package 10 -	0%	8 wks	Thu 02/05/19	Wed 26/06/19	
731	2.10 RIBA Stage 5 & 6 - Jersey Future Hospital (D18)	0%	220 wks	Wed 01/01/20	Tue 19/03/24	
732	2.10.1 Construction Mobilisation (D24)	0%	16 wks	Wed 01/01/20	Tue 21/04/20	Contractor
733	2.10.2 Construction Breakdown	0%	158 wks	Wed 22/04/20	Tue 02/05/23	
734	2.10.2.1 Piling mat formation	0%	8 wks	Wed 22/04/20	Tue 16/06/20	
735	2.10.2.2 Piling	0%	15 wks	Wed 17/06/20	Tue 29/09/20	
736	2.10.2.3 Groundworks	0%	25 wks	Wed 30/09/20	Tue 23/03/21	
737	2.10.2.4 Substructure	0%	30 wks	Wed 24/03/21	Tue 19/10/21	
738	2.10.2.5 Integral Services	0%	12 wks	Wed 20/10/21	Tue 11/01/22	
739	2.10.2.6 Superstructure (incl. Services Infrastructure)	0%	30 wks	Wed 20/10/21	Tue 17/05/22	

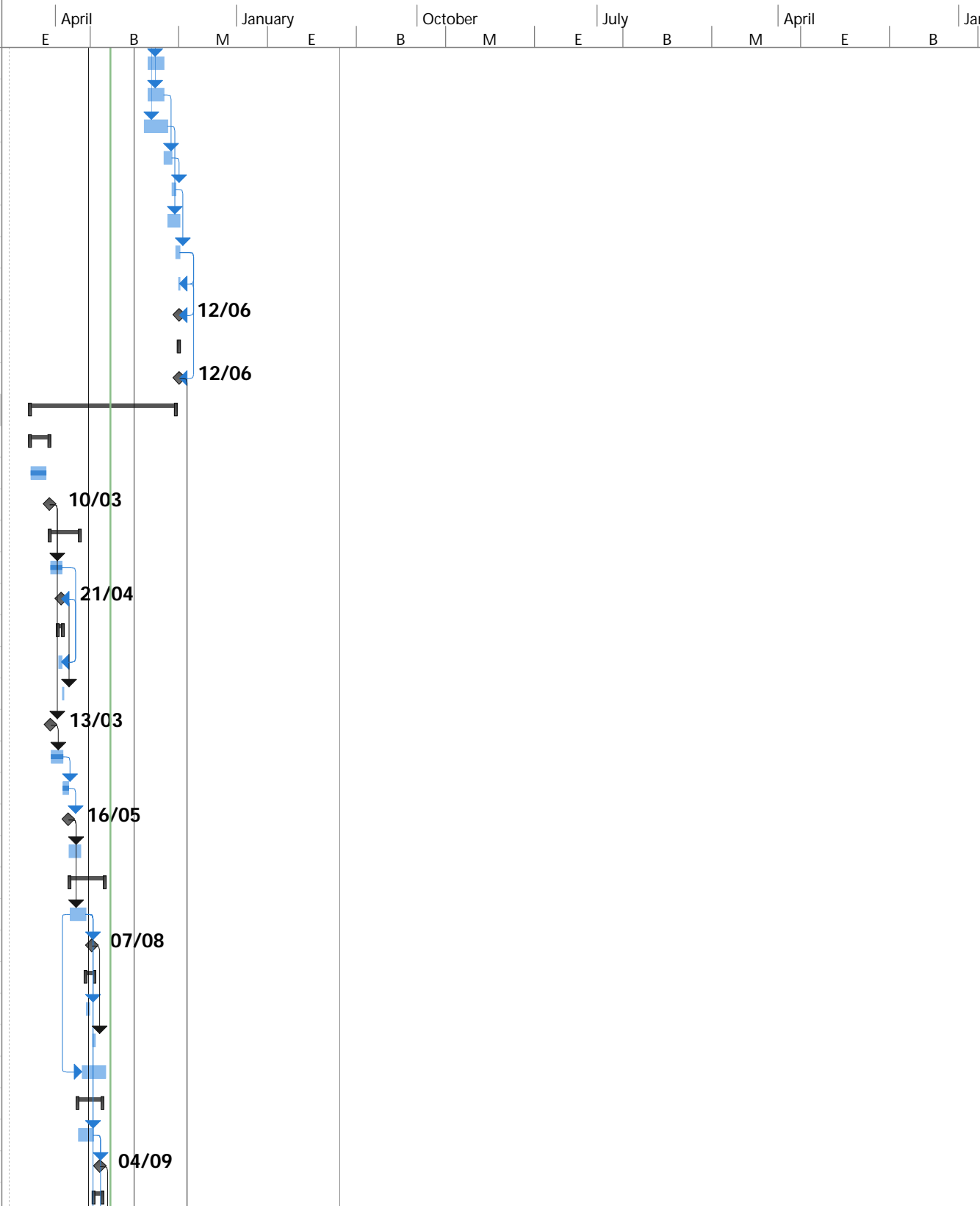
Project: JFH & Westaway Court Programme (Option 4)
Date: Thu 12/10/17

Task		Project Summary		Manual Task		Start-only		Deadline	
Split		Inactive Task		Duration-only		Finish-only		Progress	
Milestone		Inactive Milestone		Manual Summary Rollup		External Tasks		Manual Progress	
Summary		Inactive Summary		Manual Summary		External Milestone			

ID	Task Name	% Complete	Duration	Start	Finish	
740	2.10.2.7 Phased Cladding	0%	20 wks	Wed 18/05/22	Tue 04/10/22	
741	2.10.2.8 M&E Installation	0%	35 wks	Wed 18/05/22	Tue 17/01/23	
742	2.10.2.9 Fit-out	0%	50 wks	Wed 18/05/22	Tue 02/05/23	
743	2.10.3 Building Works & Commissioning	0%	30 wks	Wed 03/05/23	Tue 28/11/23	
744	2.10.3.1 Contracting Inspection & Testing (D25)	0%	10 wks	Wed 03/05/23	Tue 11/07/23	
745	2.10.3.2 Assurance Review Inspection & Testing (D26)	0%	8 wks	Wed 12/07/23	Tue 05/09/23	
746	2.10.3.3 Project Evaluation & Assurance Review - Readiness for Service (D27)	0%	8 wks	Wed 06/09/23	Tue 31/10/23	
747	2.10.3.4 NEC Planned Completion Date	0%	4 wks	Wed 01/11/23	Tue 28/11/23	
748	2.10.3.5 Completion of the Works (D28)	0%	0 days	Tue 28/11/23	Tue 28/11/23	
749	2.10.4 Post-Completion Activities/Moves (D29)	0%	16 wks	Wed 29/11/23	Tue 19/03/24	
750	2.10.4.1 Moves	0%	16 wks	Wed 29/11/23	Tue 19/03/24	
751	2.10.4.2 Occupation of Main Hospital	0%	0 wks	Tue 19/03/24	Tue 19/03/24	
752	2.11 Aftercare Period 3yrs	0%	156.2 wks	Wed 29/11/23	Wed 25/11/26	
753	2.11.1 Defects duration	0%	156 wks	Wed 29/11/23	Tue 24/11/26	
754	2.11.2 End of Defects	0%	0.2 wks	Wed 25/11/26	Wed 25/11/26	
755	3 JGH Enabling Schemes 01-10 v1.2	16%	120.4 wks	Mon 02/01/17	Tue 23/04/19	
756	3.1 ES01 Catering CPU (off-site)	23%	75.4 wks	Mon 02/01/17	Tue 12/06/18	
757	3.1.1 Pre-Construction	35%	54.6 wks	Mon 02/01/17	Wed 17/01/18	
758	3.1.1.1 Stage 1	100%	10 wks	Mon 02/01/17	Fri 10/03/17	
763	3.1.1.2 Property Selection & Agreement	46%	16.4 wks	Mon 13/03/17	Tue 04/07/17	
770	3.1.1.3 Stage 2	79%	18 wks	Mon 13/03/17	Fri 14/07/17	
776	3.1.1.4 Local consultants ITT process	82%	20.2 wks	Mon 13/03/17	Mon 31/07/17	
782	3.1.1.5 Stage 3	0%	26.2 wks	Wed 19/07/17	Wed 17/01/18	
792	3.1.1.6 Stage 4	0%	8.2 wks	Wed 16/08/17	Wed 11/10/17	
800	3.1.1.7 Contractor Tender Stage	0%	23.4 wks	Mon 17/07/17	Tue 26/12/17	
809	3.1.1.8 Enabling works Tender & Appointment	0%	3 wks	Wed 27/09/17	Tue 17/10/17	
810	3.1.2 Stage 5 Construction	0%	34 wks	Wed 18/10/17	Tue 12/06/18	
811	3.1.2.1 Enabling works (Strip out and Division wall)	0%	5 wks	Wed 18/10/17	Tue 21/11/17	
812	3.1.2.2 Construction Phase (RIBA Stage 5)	0%	24 wks	Wed 27/12/17	Tue 12/06/18	
813	3.1.2.2.1 Mobilisation	0%	1 wk	Wed 27/12/17	Tue 02/01/18	
814	3.1.2.2.2 New services & drains under RAF	0%	4 wks	Wed 03/01/18	Tue 30/01/18	
815	3.1.2.2.3 Infill external cladding fabric and create Structural	0%	3 wks	Wed 03/01/18	Tue 23/01/18	
816	3.1.2.2.4 Install RAF system	0%	3 wks	Wed 31/01/18	Tue 20/02/18	
817	3.1.2.2.5 Install Mezzanine services floor level & stairs	0%	5 wks	Wed 03/01/18	Tue 06/02/18	
818	3.1.2.2.6 Construct & Install Electrical sub-station	0%	3 wks	Wed 31/01/18	Tue 20/02/18	

Project: JFH & Westaway Court Programme (Option 4) Date: Thu 12/10/17	Task		Project Summary		Manual Task		Start-only		Deadline	
	Split		Inactive Task		Duration-only		Finish-only		Progress	
	Milestone		Inactive Milestone		Manual Summary Rollup		External Tasks		Manual Progress	
	Summary		Inactive Summary		Manual Summary		External Milestone			

ID	Task Name	% Complete	Duration	Start	Finish	
819	3.1.2.2.7 JEC installation and Power on	0%	8 wks	Wed 21/02/18	Tue 17/04/18	
820	3.1.2.2.8 Carpentry - 1st & 2nd fix	0%	8 wks	Wed 21/02/18	Tue 17/04/18	
821	3.1.2.2.9 M&E services - 1st & 2nd fix	0%	12 wks	Wed 07/02/18	Tue 01/05/18	
822	3.1.2.2.10 Floor and wall finishes	0%	4 wks	Wed 18/04/18	Tue 15/05/18	
823	3.1.2.2.11 Fit-out specialist equipment (non-relocatable)	0%	2 wks	Wed 16/05/18	Tue 29/05/18	
824	3.1.2.2.12 Commissioning Period	0%	6 wks	Wed 02/05/18	Tue 12/06/18	
825	3.1.2.2.13 Snagging and Inspection Period	0%	2 wks	Wed 30/05/18	Tue 12/06/18	
826	3.1.2.2.14 Relocate Existing Catering Equipment (Inc. Comm)	0%	3 days	Fri 08/06/18	Tue 12/06/18	
827	3.1.2.2.15 Move In Complete	0%	1 day	Tue 12/06/18	Tue 12/06/18	
828	3.1.3 Stage 6	0%	0.2 wks	Tue 12/06/18	Tue 12/06/18	
829	3.1.3.1 Project Completion & Handover (RIBA Stage 6)	0%	1 day	Tue 12/06/18	Tue 12/06/18	
830	3.2 ES02 Engineering Block (now ES04 & 06)	16%	74 wks	Mon 02/01/17	Fri 01/06/18	
831	3.2.1 Stage 1	100%	10 wks	Mon 02/01/17	Fri 10/03/17	
832	3.2.1.1 RIBA Design Stage 1	100%	8 wks	Mon 02/01/17	Fri 24/02/17	
833	3.2.1.2 RIBA Stage 1 signoff	100%	1 day	Fri 10/03/17	Fri 10/03/17	
834	3.2.2 Stage 2	61%	15.4 wks	Mon 13/03/17	Tue 27/06/17	
835	3.2.2.1 RIBA Design Stage 2	100%	6 wks	Mon 13/03/17	Fri 21/04/17	
836	3.2.2.2 Stage 2 complete	0%	1 day	Fri 21/04/17	Fri 21/04/17	
837	3.2.2.3 RIBA Stage 2 - PB review & signoff period	0%	3 wks	Mon 10/04/17	Fri 28/04/17	
838	3.2.2.3.1 Clinical Review for comment & approval	0%	2 wks	Mon 10/04/17	Fri 21/04/17	
839	3.2.2.3.2 PB submission and sign-off	0%	5 days	Mon 24/04/17	Fri 28/04/17	
840	3.2.2.4 ITT Consultants Pack Issued	100%	1 day	Mon 13/03/17	Mon 13/03/17	
841	3.2.2.5 Consultant Tender Procurement	100%	6 wks	Tue 14/03/17	Mon 24/04/17	
842	3.2.2.6 Review & Evaluate Tender response	95%	3 wks	Tue 25/04/17	Mon 15/05/17	
843	3.2.2.7 Appoint Design Team Consultants & HSPC	0%	1 day	Tue 16/05/17	Tue 16/05/17	
844	3.2.2.8 Consultant contracts & document process	0%	6 wks	Wed 17/05/17	Tue 27/06/17	
845	3.2.3 Stage 3	0%	18 wks	Mon 22/05/17	Fri 22/09/17	
846	3.2.3.1 RIBA Design Stage 3	0%	8 wks	Mon 22/05/17	Fri 14/07/17	
847	3.2.3.2 Stage 3 complete	0%	1 day	Mon 07/08/17	Mon 07/08/17	
848	3.2.3.3 RIBA Stage 3 - PB review & signoff period	0%	4.8 wks	Mon 17/07/17	Thu 17/08/17	
849	3.2.3.3.1 Clinical Review for comment & approval	0%	2 wks	Mon 17/07/17	Fri 28/07/17	
850	3.2.3.3.2 PB submission and sign-off	0%	8 days	Tue 08/08/17	Thu 17/08/17	
851	3.2.3.4 Planning & Bye-laws Submission & Approval	0%	12 wks	Mon 03/07/17	Fri 22/09/17	
852	3.2.4 Stage 4	0%	12.8 wks	Mon 19/06/17	Thu 14/09/17	
853	3.2.4.1 RIBA Design Stage 4	0%	8 wks	Mon 19/06/17	Fri 11/08/17	
854	3.2.4.2 Stage 4 complete	0%	1 day	Mon 04/09/17	Mon 04/09/17	
855	3.2.4.3 RIBA Stage 4 - PB review & signoff period	0%	4.8 wks	Mon 14/08/17	Thu 14/09/17	



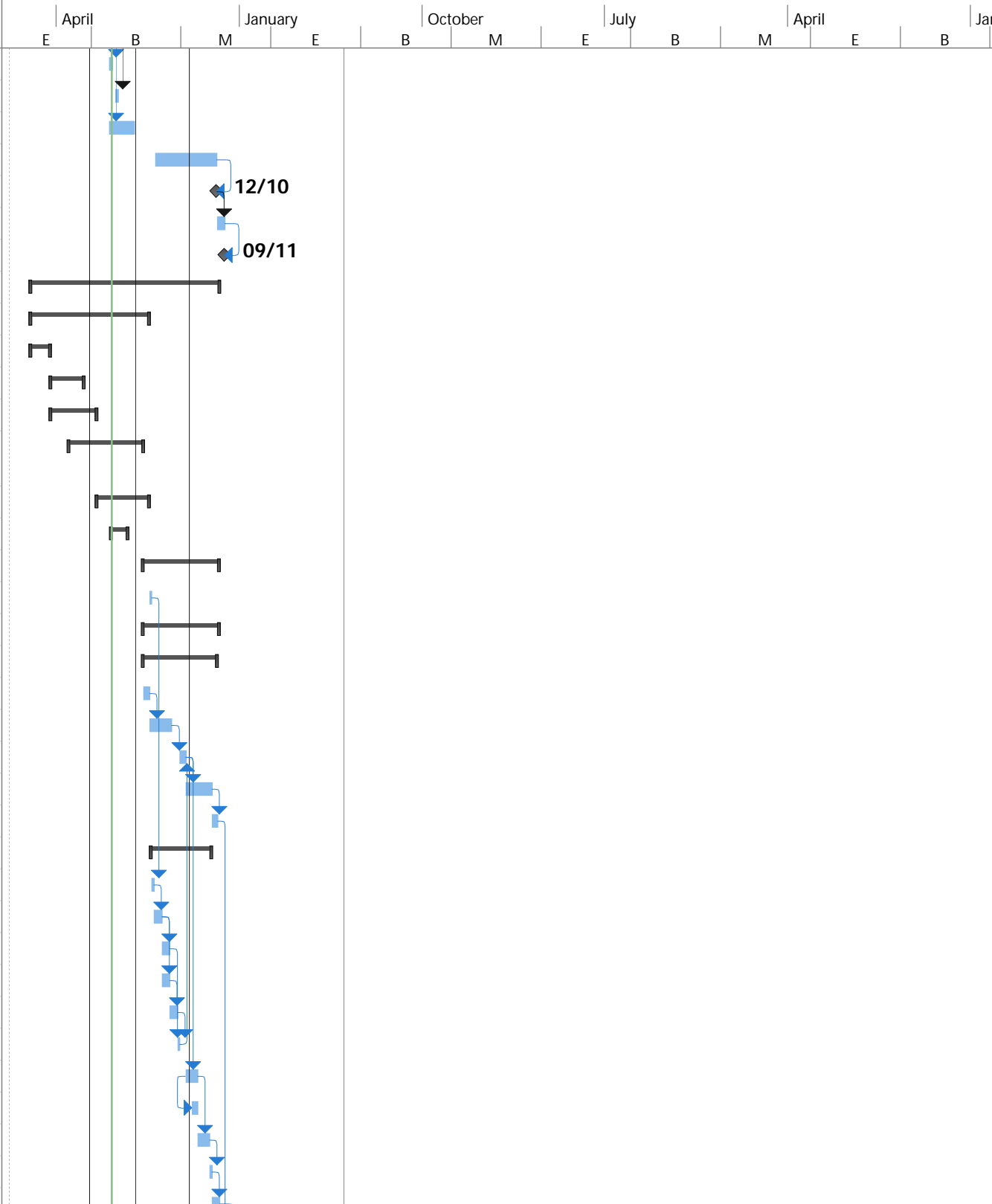
Project: JFH & Westaway Court Programme (Option 4)
Date: Thu 12/10/17

Task		Project Summary		Manual Task		Start-only		Deadline	
Split		Inactive Task		Duration-only		Finish-only		Progress	
Milestone		Inactive Milestone		Manual Summary Rollup		External Tasks		Manual Progress	
Summary		Inactive Summary		Manual Summary		External Milestone			

ID	Task Name	% Complete	Duration	Start	Finish	
856	3.2.4.3.1 Clinical Review for comment & approval	0%	2 wks	Mon 14/08/17	Fri 25/08/17	
857	3.2.4.3.2 PB submission and sign-off	0%	8 days	Tue 05/09/17	Thu 14/09/17	
858	3.2.5 Construction Tender Stage	0%	11 wks	Mon 24/07/17	Fri 06/10/17	
859	3.2.6 Stage 5	0%	34 wks	Mon 09/10/17	Fri 01/06/18	
860	3.2.6.1 Construction Phase (RIBA Stage 5)	0%	30 wks	Mon 09/10/17	Fri 04/05/18	
861	3.2.6.1.1 ES02 A - Temporary FM workshops (Off-site)	0%	16 wks	Mon 09/10/17	Fri 26/01/18	
862	3.2.6.1.2 ES02 B - M&E workshops and Stores (GFL Eng. Block)	0%	14 wks	Mon 09/10/17	Fri 12/01/18	
863	3.2.6.1.3 ES02 C - FM Offices (St. Elmo building)	0%	16 wks	Mon 09/10/17	Fri 26/01/18	
864	3.2.6.1.4 ES02 D - Administration Offices (1st & 2nd floors)	0%	16 wks	Mon 15/01/18	Fri 04/05/18	
865	3.2.6.2 Project Completion & Handover (RIBA Stage 6)	0%	1 day	Fri 04/05/18	Fri 04/05/18	
866	3.2.6.3 Relocate Department Services	0%	4 wks	Mon 07/05/18	Fri 01/06/18	
867	3.2.6.4 Move In Complete	0%	1 day	Fri 01/06/18	Fri 01/06/18	
868	3.2.7 Stage 6	0%	0.2 wks	Fri 01/06/18	Fri 01/06/18	
869	3.2.7.1 Project Completion & Handover (RIBA Stage 6)	0%	1 day	Fri 01/06/18	Fri 01/06/18	
870	3.3 ES03 Clinics to GFL vacated catering (on-site) Phased Start (into ES08)	18%	97 wks	Mon 02/01/17	Fri 09/11/18	
871	3.3.1 RIBA Design Stage 1	100%	8 wks	Mon 02/01/17	Fri 24/02/17	
872	3.3.2 RIBA Stage 1 signoff	100%	1 day	Fri 10/03/17	Fri 10/03/17	
873	3.3.3 RIBA Design Stage 2	50%	12 wks	Mon 16/01/17	Fri 07/04/17	
874	3.3.4 Stage 2 complete	0%	1 day	Fri 21/04/17	Fri 21/04/17	
875	3.3.5 RIBA Stage 2 - PB review & signoff period	0%	3 wks	Mon 10/04/17	Fri 28/04/17	
876	3.3.5.1 Clinical Review for comment & approval	0%	2 wks	Mon 10/04/17	Fri 21/04/17	
877	3.3.5.2 PB submission and sign-off	0%	5 days	Mon 24/04/17	Fri 28/04/17	
878	3.3.6 ITT Consultants Pack Issued	100%	1 day	Mon 13/03/17	Mon 13/03/17	
879	3.3.7 Consultant Tender Procurement	100%	6 wks	Tue 14/03/17	Mon 24/04/17	
880	3.3.8 Review & Evaluate Tender response	95%	3 wks	Tue 25/04/17	Mon 15/05/17	
881	3.3.9 Appoint Design Team Consultants & HSPC	0%	1 day	Tue 16/05/17	Tue 16/05/17	
882	3.3.10 Consultant contracts & document process	0%	6 wks	Wed 17/05/17	Tue 27/06/17	
883	3.3.11 RIBA Design Stage 3	0%	8 wks	Mon 22/05/17	Fri 14/07/17	
884	3.3.12 Stage 3 complete	0%	1 day	Mon 07/08/17	Mon 07/08/17	
885	3.3.13 RIBA Stage 3 - PB review & signoff period	0%	4.8 wks	Mon 17/07/17	Thu 17/08/17	
886	3.3.13.1 Clinical Review for comment & approval	0%	2 wks	Mon 17/07/17	Fri 28/07/17	
887	3.3.13.2 PB submission and sign-off	0%	8 days	Tue 08/08/17	Thu 17/08/17	
888	3.3.14 Planning & Bye-laws Submission & Approval	0%	12 wks	Mon 03/07/17	Fri 22/09/17	
889	3.3.15 RIBA Design Stage 4	0%	11 wks	Mon 17/07/17	Fri 29/09/17	
890	3.3.16 Stage 4 complete	0%	1 day	Mon 23/10/17	Mon 23/10/17	
891	3.3.17 RIBA Stage 4 - PB review & signoff period	0%	4.8 wks	Mon 02/10/17	Thu 02/11/17	

Project: JFH & Westaway Court Programme (Option 4) Date: Thu 12/10/17	Task		Project Summary		Manual Task		Start-only		Deadline	
	Split		Inactive Task		Duration-only		Finish-only		Progress	
	Milestone		Inactive Milestone		Manual Summary Rollup		External Tasks		Manual Progress	
	Summary		Inactive Summary		Manual Summary		External Milestone			

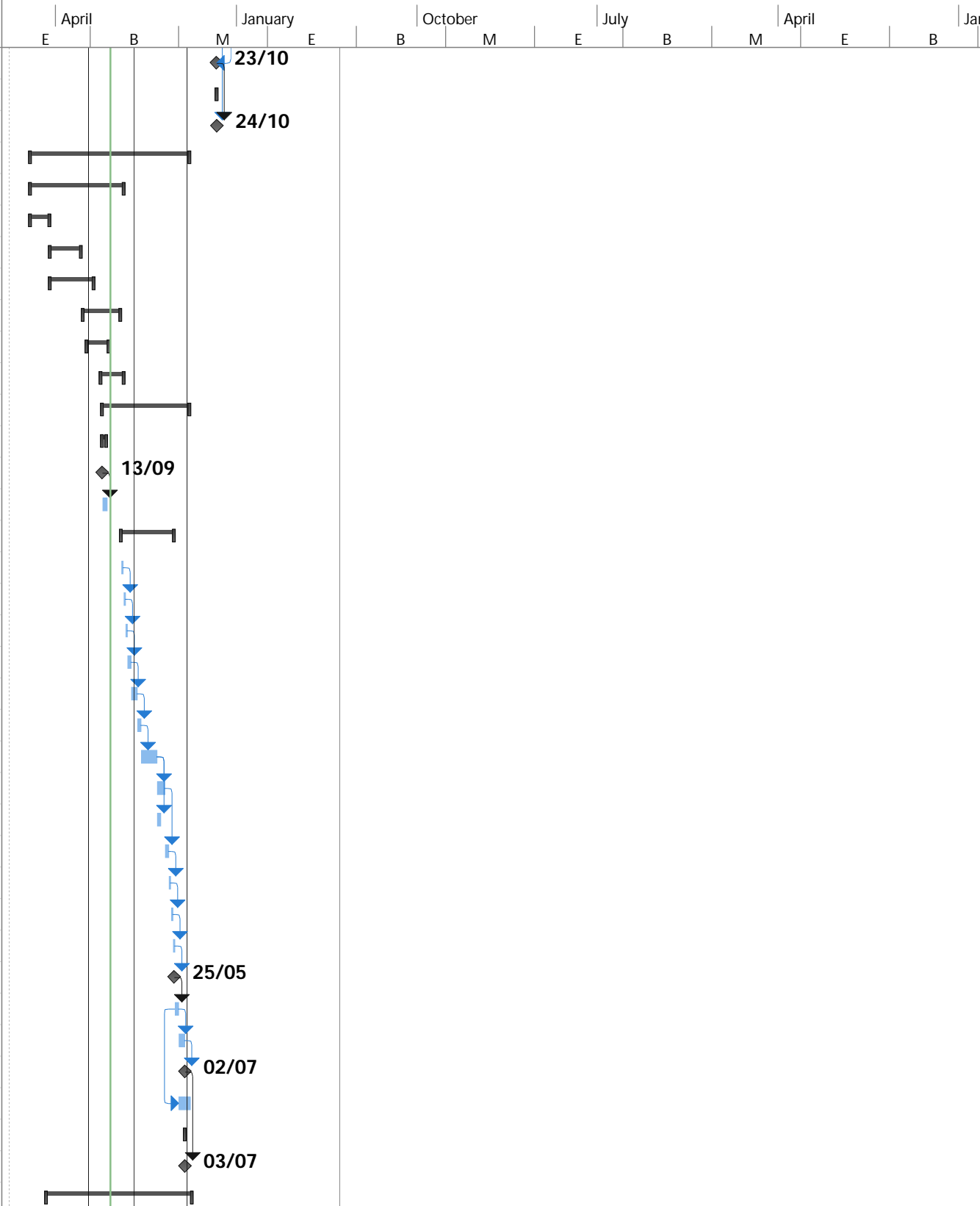
ID	Task Name	% Complete	Duration	Start	Finish	
892	3.3.17.1 Clinical Review for comment & approval	0%	2 wks	Mon 02/10/17	Fri 13/10/17	
893	3.3.17.2 PB submission and sign-off	0%	8 days	Tue 24/10/17	Thu 02/11/17	
894	3.3.18 Contractor Tender Stage	0%	13 wks	Mon 02/10/17	Fri 29/12/17	
895	3.3.19 Construction Phase (RIBA Stage 5)	0%	31 wks	Mon 12/03/18	Fri 12/10/18	
896	3.3.20 Project Completion & Handover (RIBA Stage 6)	0%	1 day	Fri 12/10/18	Fri 12/10/18	
897	3.3.21 Relocate Catering & Department Services	0%	4 wks	Mon 15/10/18	Fri 09/11/18	
898	3.3.22 Move In	0%	1 day	Fri 09/11/18	Fri 09/11/18	
899	3.4 ES04 Temporary Clinic (on-site)	19%	94.6 wks	Mon 02/01/17	Wed 24/10/18	
900	3.4.1 Pre-Construction	28%	59.4 wks	Mon 02/01/17	Tue 20/02/18	
901	3.4.1.1 Stage 1	100%	10 wks	Mon 02/01/17	Fri 10/03/17	
904	3.4.1.2 Stage 2	78%	17 wks	Mon 13/03/17	Fri 07/07/17	
911	3.4.1.3 Local consultants ITT process	60%	23.2 wks	Mon 13/03/17	Mon 21/08/17	
917	3.4.1.4 Modular Supplier Tender Stage - Principal contractor	6%	37.6 wks	Mon 15/05/17	Wed 31/01/18	
939	3.4.1.5 Stage 3	0%	26.2 wks	Tue 22/08/17	Tue 20/02/18	
948	3.4.1.6 Stage 4	0%	8.2 wks	Wed 11/10/17	Wed 06/12/17	
955	3.4.2 Stage 5 Construction	0%	38.2 wks	Tue 30/01/18	Tue 23/10/18	
956	3.4.2.1 Site Mobilisation and set up	0%	1 wk	Wed 21/02/18	Tue 27/02/18	
957	3.4.2.2 Construction Phase (RIBA Stage 5)	0%	38.2 wks	Tue 30/01/18	Tue 23/10/18	
958	3.4.2.2.1 Modular Supplier - Principal contractor	0%	37.2 wks	Tue 30/01/18	Tue 16/10/18	
959	3.4.2.2.1.1 Module Manufacture	0%	3 wks	Tue 30/01/18	Mon 19/02/18	
960	3.4.2.2.1.2 Off-site Fit Out	0%	11 wks	Tue 20/02/18	Mon 07/05/18	
961	3.4.2.2.1.3 Module Delivery & Cranage	0%	3 wks	Wed 06/06/18	Tue 26/06/18	
962	3.4.2.2.1.4 On-site Fit Out & M&E	0%	13 wks	Wed 27/06/18	Tue 25/09/18	
963	3.4.2.2.1.5 Commissioning & Handover	0%	3 wks	Wed 26/09/18	Tue 16/10/18	
964	3.4.2.2.2 Site works - Sub-Contractor	0%	30 wks	Wed 28/02/18	Tue 25/09/18	
965	3.4.2.2.2.1 Enabling & Demolition phase	0%	1 wk	Wed 28/02/18	Tue 06/03/18	
966	3.4.2.2.2.2 Excavations and Piling works	0%	4 wks	Wed 07/03/18	Tue 03/04/18	
967	3.4.2.2.2.3 Underground services and Drainage	0%	4 wks	Wed 04/04/18	Tue 01/05/18	
968	3.4.2.2.2.4 Foundations and Sub-structure blockwork	0%	4 wks	Wed 04/04/18	Tue 01/05/18	
969	3.4.2.2.2.5 Sub-structure infill and slab	0%	4 wks	Wed 02/05/18	Tue 29/05/18	
970	3.4.2.2.2.6 Commission Drains & Secure/Protect	0%	5 days	Wed 30/05/18	Tue 05/06/18	
971	3.4.2.2.2.7 Access routes and building links	0%	6 wks	Wed 27/06/18	Tue 07/08/18	
972	3.4.2.2.2.8 Rendering & decorations	0%	3 wks	Wed 18/07/18	Tue 07/08/18	
973	3.4.2.2.2.9 Hard and Soft landscaping	0%	6 wks	Wed 08/08/18	Tue 18/09/18	
974	3.4.2.2.2.10 Commissioning & Handover	0%	1 wk	Wed 19/09/18	Tue 25/09/18	
975	3.4.2.2.3 Relocate Department Services	0%	4 wks	Wed 26/09/18	Tue 23/10/18	



Project: JFH & Westaway Court Programme (Option 4)
Date: Thu 12/10/17

Task		Project Summary		Manual Task		Start-only		Deadline	
Split		Inactive Task		Duration-only		Finish-only		Progress	
Milestone		Inactive Milestone		Manual Summary Rollup		External Tasks		Manual Progress	
Summary		Inactive Summary		Manual Summary		External Milestone			

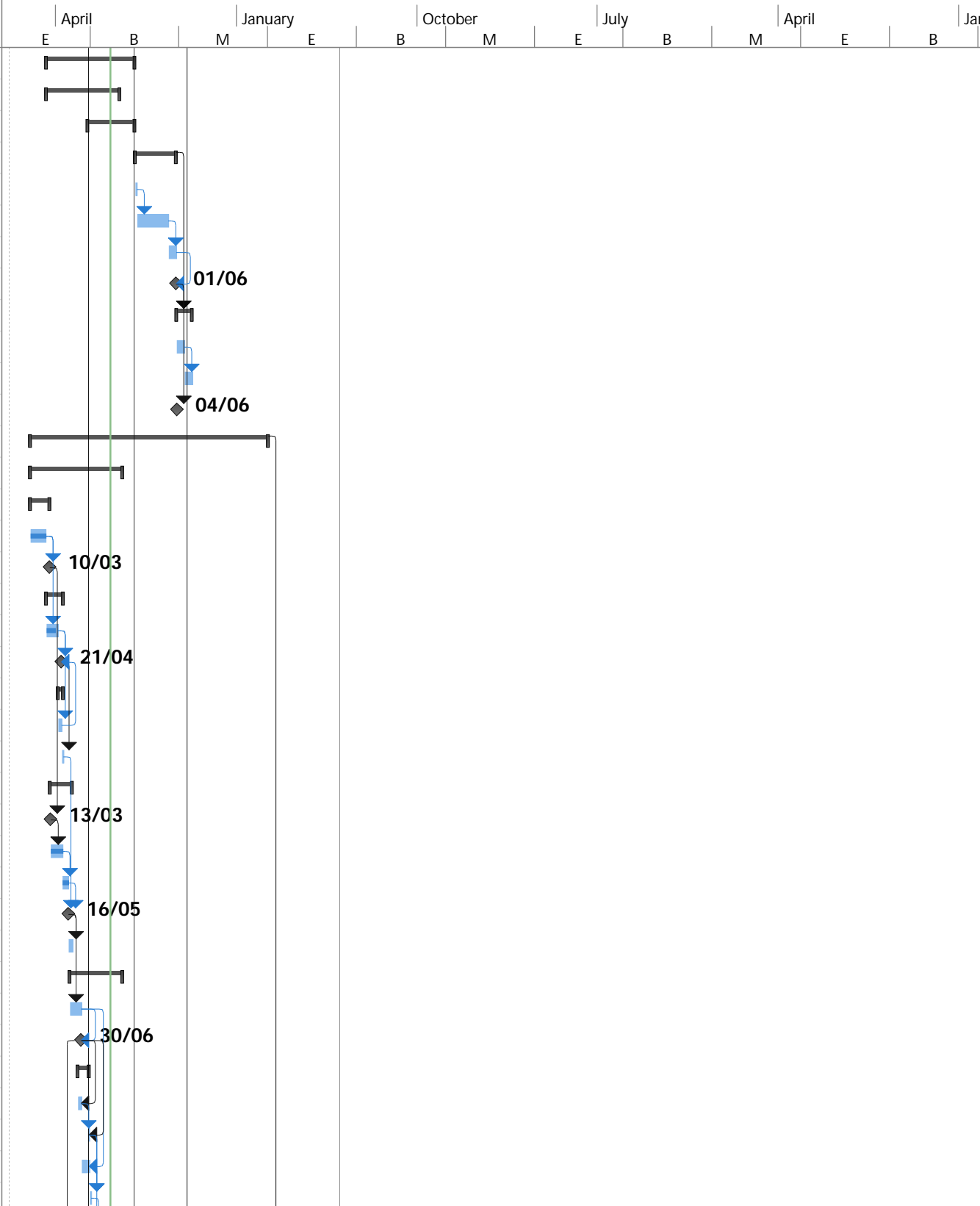
ID	Task Name	% Complete	Duration	Start	Finish	
976	3.4.2.2.4 Move In	0%	1 day	Tue 23/10/18	Tue 23/10/18	
977	3.4.3 Stage 6	0%	0.2 wks	Wed 24/10/18	Wed 24/10/18	
978	3.4.3.1 Project Completion & Handover (RIBA Stage 6)	0%	1 day	Wed 24/10/18	Wed 24/10/18	
979	3.5 ES05 Medical records (off-site)	24%	81 wks	Mon 02/01/17	Fri 20/07/18	
980	3.5.1 Pre-Construction	33%	47.6 wks	Mon 02/01/17	Wed 29/11/17	
981	3.5.1.1 Stage 1	100%	10 wks	Mon 02/01/17	Fri 10/03/17	
984	3.5.1.2 Stage 2	56%	16 wks	Mon 13/03/17	Fri 30/06/17	
991	3.5.1.3 Local consultants ITT process	61%	22.2 wks	Mon 13/03/17	Mon 14/08/17	
997	3.5.1.4 Stage 3	0%	19.2 wks	Fri 07/07/17	Fri 17/11/17	
1006	3.5.1.5 Stage 4	0%	11.2 wks	Fri 21/07/17	Fri 06/10/17	
1013	3.5.1.6 Tender Stage	0%	11.8 wks	Fri 08/09/17	Wed 29/11/17	
1025	3.5.2 Stage 5 Construction	0%	44.6 wks	Wed 13/09/17	Fri 20/07/18	
1026	3.5.2.1 Enabling works	0%	2.2 wks	Wed 13/09/17	Wed 27/09/17	
1027	3.5.2.1.1 Client Area Decant Complete	0%	1 day	Wed 13/09/17	Wed 13/09/17	
1028	3.5.2.1.2 Decommission services	0%	2 wks	Thu 14/09/17	Wed 27/09/17	
1029	3.5.2.2 Construction Phase (RIBA Stage 5)	0%	27 wks	Mon 20/11/17	Fri 25/05/18	
1030	3.5.2.2.1 Site Mobilisation and Set up	0%	1 wk	Mon 20/11/17	Fri 24/11/17	
1031	3.5.2.2.2 Demolish partition walls	0%	1 wk	Mon 27/11/17	Fri 01/12/17	
1032	3.5.2.2.3 Build new partition wall to OT dept.	0%	1 wk	Mon 04/12/17	Fri 08/12/17	
1033	3.5.2.2.4 Underground services and Drains	0%	2 wks	Mon 11/12/17	Fri 22/12/17	
1034	3.5.2.2.5 New internal partitions	0%	3 wks	Mon 25/12/17	Fri 12/01/18	
1035	3.5.2.2.6 New RAF system	0%	2 wks	Mon 15/01/18	Fri 26/01/18	
1036	3.5.2.2.7 M&E 1st & 2nd fix	0%	8 wks	Mon 29/01/18	Fri 23/03/18	
1037	3.5.2.2.8 Carpentry 1st & 2nd fix	0%	4 wks	Mon 26/03/18	Fri 20/04/18	
1038	3.5.2.2.9 External porch canopy and access	0%	2 wks	Mon 26/03/18	Fri 06/04/18	
1039	3.5.2.2.10 Decorations	0%	2 wks	Mon 23/04/18	Fri 04/05/18	
1040	3.5.2.2.11 Floor finishes	0%	1 wk	Mon 07/05/18	Fri 11/05/18	
1041	3.5.2.2.12 Commissioning	0%	1 wk	Mon 14/05/18	Fri 18/05/18	
1042	3.5.2.2.13 Snagging Period	0%	1 wk	Mon 21/05/18	Fri 25/05/18	
1043	3.5.2.2.14 Completion of Build contract	0%	0 days	Fri 25/05/18	Fri 25/05/18	
1044	3.5.2.3 Installation of New flooring and Racking units	0%	2 wks	Mon 28/05/18	Fri 08/06/18	
1045	3.5.2.4 Relocation of existing racking systems	0%	3 wks	Mon 11/06/18	Fri 29/06/18	
1046	3.5.2.5 Staff Move In	0%	1 day	Mon 02/07/18	Mon 02/07/18	
1047	3.5.2.6 Relocate Medical records	0%	6 wks	Mon 11/06/18	Fri 20/07/18	
1048	3.5.3 Stage 6	0%	0.2 wks	Tue 03/07/18	Tue 03/07/18	
1049	3.5.3.1 Project Completion & Handover (RIBA Stage 6)	0%	1 day	Tue 03/07/18	Tue 03/07/18	
1050	3.6 ES06 Corporate Functions (off-site)	13%	74 wks	Mon 27/02/17	Fri 27/07/18	



Project: JFH & Westaway Court Programme (Option 4)
Date: Thu 12/10/17

Task		Project Summary		Manual Task		Start-only		Deadline	
Split		Inactive Task		Duration-only		Finish-only		Progress	
Milestone		Inactive Milestone		Manual Summary Rollup		External Tasks		Manual Progress	
Summary		Inactive Summary		Manual Summary		External Milestone			

ID	Task Name	% Complete	Duration	Start	Finish	
1051	3.6.1 Pre-Construction	19%	45 wks	Mon 27/02/17	Fri 05/01/18	
1052	3.6.1.1 Property Selection & Agreement	35%	37.2 wks	Mon 27/02/17	Mon 13/11/17	
1063	3.6.1.2 Office fit-out (Design)	0%	24 wks	Mon 24/07/17	Fri 05/01/18	
1069	3.6.2 Stage 5 Construction	0%	21 wks	Mon 08/01/18	Fri 01/06/18	
1070	3.6.2.1 Appoint contractor	0%	1 wk	Mon 08/01/18	Fri 12/01/18	
1071	3.6.2.2 Construction period	0%	16 wks	Mon 15/01/18	Fri 04/05/18	
1072	3.6.2.3 Relocate period	0%	4 wks	Mon 07/05/18	Fri 01/06/18	
1073	3.6.2.4 Available for Move In	0%	1 day	Fri 01/06/18	Fri 01/06/18	
1074	3.6.3 Stage 6 Relocation	0%	8 wks	Mon 04/06/18	Fri 27/07/18	
1075	3.6.3.1 Migrate staff	0%	4 wks	Mon 04/06/18	Fri 29/06/18	
1076	3.6.3.2 Clear existing office accommodation	0%	4 wks	Mon 02/07/18	Fri 27/07/18	
1077	3.6.3.3 Handover for Decommission and Demolition	0%	1 day	Mon 04/06/18	Mon 04/06/18	
1078	3.7 ES07 Westaway Clinic Block (off-site)	8%	120.4 wks	Mon 02/01/17	Tue 23/04/19	
1079	3.7.1 Pre-Construction	23%	47 wks	Mon 02/01/17	Fri 24/11/17	
1080	3.7.1.1 Stage 1	100%	10 wks	Mon 02/01/17	Fri 10/03/17	
1081	3.7.1.1.1 RIBA Design Stage 1	100%	8 wks	Mon 02/01/17	Fri 24/02/17	
1082	3.7.1.1.2 RIBA Stage 1 signoff	100%	1 day	Fri 10/03/17	Fri 10/03/17	
1083	3.7.1.2 Stage 2	50%	9 wks	Mon 27/02/17	Fri 28/04/17	
1084	3.7.1.2.1 RIBA Design Stage 2	77%	6 wks	Mon 27/02/17	Fri 07/04/17	
1085	3.7.1.2.2 Stage 2 designs complete	0%	1 day	Fri 21/04/17	Fri 21/04/17	
1086	3.7.1.2.3 RIBA Stage 2 - PB review & signoff period	0%	3 wks	Mon 10/04/17	Fri 28/04/17	
1087	3.7.1.2.3.1 Clinical Review for comment & approval	0%	2 wks	Mon 10/04/17	Fri 21/04/17	
1088	3.7.1.2.3.2 PB submission and sign-off	0%	5 days	Mon 24/04/17	Fri 28/04/17	
1089	3.7.1.3 Local consultants ITT process	81%	11.4 wks	Mon 13/03/17	Tue 30/05/17	
1090	3.7.1.3.1 ITT Consultants Pack Issued	100%	1 day	Mon 13/03/17	Mon 13/03/17	
1091	3.7.1.3.2 Consultant Tender Procurement	100%	6 wks	Tue 14/03/17	Mon 24/04/17	
1092	3.7.1.3.3 Review & Evaluate Tender response	100%	3 wks	Tue 25/04/17	Mon 15/05/17	
1093	3.7.1.3.4 Appoint Design Team Consultants & HSPC	17%	1 day	Tue 16/05/17	Tue 16/05/17	
1094	3.7.1.3.5 Consultant contracts & document process	0%	2 wks	Wed 17/05/17	Tue 30/05/17	
1095	3.7.1.4 Stage 3	0%	27 wks	Mon 22/05/17	Fri 24/11/17	
1096	3.7.1.4.1 RIBA Design Stage 3	0%	6 wks	Mon 22/05/17	Fri 30/06/17	
1097	3.7.1.4.2 Stage 3 designs complete	0%	1 day	Fri 30/06/17	Fri 30/06/17	
1098	3.7.1.4.3 RIBA Stage 3 - PB review & signoff period	0%	6 wks	Mon 19/06/17	Fri 28/07/17	
1099	3.7.1.4.3.1 Clinical Review for comment & approval	0%	2 wks	Mon 19/06/17	Fri 30/06/17	
1100	3.7.1.4.3.2 PB submission and sign-off	0%	5 days	Mon 24/07/17	Fri 28/07/17	
1101	3.7.1.4.4 Planning & Bye-laws design	0%	4 wks	Mon 03/07/17	Fri 28/07/17	
1102	3.7.1.4.5 SoJ written approval for Planning application	0%	5 days	Mon 31/07/17	Fri 04/08/17	



Project: JFH & Westaway Court Programme (Option 4) Date: Thu 12/10/17	Task		Project Summary		Manual Task		Start-only		Deadline	
	Split		Inactive Task		Duration-only		Finish-only		Progress	
	Milestone		Inactive Milestone		Manual Summary Rollup		External Tasks		Manual Progress	
	Summary		Inactive Summary		Manual Summary		External Milestone			

ID	Task Name	% Complete	Duration	Start	Finish	
1103	3.7.1.4.6 Planning & Bye-laws Submission & Approval	0%	16 wks	Mon 07/08/17	Fri 24/11/17	
1104	3.7.1.5 Stage 4	0%	12.2 wks	Fri 30/06/17	Fri 22/09/17	
1105	3.7.1.5.1 RIBA Design Stage 4	0%	12 wks	Fri 30/06/17	Thu 21/09/17	
1106	3.7.1.5.2 Design for Tender	0%	6 wks	Fri 30/06/17	Thu 10/08/17	
1107	3.7.1.5.3 Stage 4 designs complete	0%	1 day	Fri 22/09/17	Fri 22/09/17	
1108	3.7.1.5.4 RIBA Stage 4 - Tender signoff period	0%	3 wks	Fri 11/08/17	Thu 31/08/17	
1109	3.7.1.5.4.1 Clinical Review for comment & approval	0%	2 wks	Fri 11/08/17	Thu 24/08/17	
1110	3.7.1.5.4.2 Pre-Tender signoff	0%	5 days	Fri 25/08/17	Thu 31/08/17	
1111	3.7.1.6 Contractor Tender Stage	0%	12.2 wks	Fri 01/09/17	Fri 24/11/17	
1112	3.7.1.6.1 ITT Contractor Pack issued	0%	1 day	Fri 01/09/17	Fri 01/09/17	
1113	3.7.1.6.2 Contractor Tender Procurement	0%	4 wks	Mon 04/09/17	Fri 29/09/17	
1114	3.7.1.6.3 Review and Evaluate ITT response	0%	1 wk	Mon 02/10/17	Fri 06/10/17	
1115	3.7.1.6.4 Interview & Appoint Principle Contractor	0%	1 wk	Mon 09/10/17	Fri 13/10/17	
1116	3.7.1.6.5 Process Bond application (Projects >£1M)	0%	6 wks	Mon 16/10/17	Fri 24/11/17	
1117	3.7.1.6.6 Contractor contract & documents processed	0%	2 wks	Mon 16/10/17	Fri 27/10/17	
1118	3.7.1.6.7 Enabling & Demolition works Tender & Appointment	0%	3 wks	Fri 01/09/17	Thu 21/09/17	
1119	3.7.2 Stage 5 Construction	0%	84.2 wks	Mon 11/09/17	Mon 22/04/19	
1120	3.7.2.1 Enabling Pre-construction phase	0%	8 wks	Mon 11/09/17	Fri 03/11/17	
1121	3.7.2.1.1 Final Vacate ES10 accommodation units	0%	0 days	Mon 02/10/17	Mon 02/10/17	
1122	3.7.2.1.2 Asbestos R&D survey	0%	4 wks	Mon 11/09/17	Fri 06/10/17	
1123	3.7.2.1.3 Asbestos Strip-out	0%	6 wks	Mon 25/09/17	Fri 03/11/17	
1124	3.7.2.2 Construction Phase (RIBA Stage 5)	0%	66.2 wks	Mon 27/11/17	Mon 04/03/19	
1125	3.7.2.2.1 Demolition phase	0%	13 wks	Mon 27/11/17	Fri 23/02/18	
1126	3.7.2.2.1.1 Site Mobilisation & set-up	0%	1 wk	Mon 27/11/17	Fri 01/12/17	
1127	3.7.2.2.1.2 Soft furnishing strip out	0%	3 wks	Mon 27/11/17	Fri 15/12/17	
1128	3.7.2.2.1.3 Scaffolding erection	0%	4 wks	Mon 18/12/17	Fri 12/01/18	
1129	3.7.2.2.1.4 Hard fittings strip-out	0%	3 wks	Mon 27/11/17	Fri 15/12/17	
1130	3.7.2.2.1.5 Demolish Superstructure	0%	8 wks	Mon 18/12/17	Fri 09/02/18	
1131	3.7.2.2.1.6 Demolish Substructure	0%	2 wks	Mon 12/02/18	Fri 23/02/18	
1132	3.7.2.2.2 Construction phase	0%	53.2 wks	Mon 26/02/18	Mon 04/03/19	
1133	3.7.2.2.2.1 Site Mobilisation & set-up	0%	2 wks	Mon 26/02/18	Fri 09/03/18	
1134	3.7.2.2.2.2 Sub-structure (piling, beam foundations & slab)	0%	16 wks	Mon 26/02/18	Fri 15/06/18	
1135	3.7.2.2.2.3 Underground services & Drainage	0%	3 wks	Mon 23/04/18	Fri 11/05/18	
1136	3.7.2.2.2.4 Superstructure (frame & floors)	0%	16 wks	Mon 14/05/18	Fri 31/08/18	
1137	3.7.2.2.2.5 Roof & External cladding finishes	0%	12 wks	Mon 09/07/18	Fri 28/09/18	
1138	3.7.2.2.2.6 Wind & Watertight	0%	1 day	Mon 01/10/18	Mon 01/10/18	
1139	3.7.2.2.2.7 Internal Partitions	0%	6 wks	Mon 09/07/18	Fri 17/08/18	

Project: JFH & Westaway Court Programme (Option 4) Date: Thu 12/10/17	Task		Project Summary		Manual Task		Start-only		Deadline	
	Split		Inactive Task		Duration-only		Finish-only		Progress	
	Milestone		Inactive Milestone		Manual Summary Rollup		External Tasks		Manual Progress	
	Summary		Inactive Summary		Manual Summary		External Milestone			

ID	Task Name	% Complete	Duration	Start	Finish	
1140	3.7.2.2.2.8 M&E 1st & 2nd fix	0%	24 wks	Mon 20/08/18	Fri 01/02/19	
1141	3.7.2.2.2.9 Carpentry 1st & 2nd fix	0%	18 wks	Mon 01/10/18	Fri 01/02/19	
1142	3.7.2.2.2.10 Wall & Floor finishes	0%	12 wks	Mon 29/10/18	Fri 18/01/19	
1143	3.7.2.2.2.11 Specialist equipment installation	0%	16 wks	Tue 02/10/18	Mon 21/01/19	
1144	3.7.2.2.2.12 Kitchen & facilities installation	0%	4 wks	Mon 12/11/18	Fri 07/12/18	
1145	3.7.2.2.2.13 Soft & Hard landscaping	0%	6 wks	Tue 22/01/19	Mon 04/03/19	
1146	3.7.2.2.2.14 Commissioning Services	0%	4 wks	Tue 22/01/19	Mon 18/02/19	
1147	3.7.2.2.2.15 Snagging period	0%	2 wks	Tue 19/02/19	Mon 04/03/19	
1148	3.7.2.3 Relocate Departmental Services (FF & E)	0%	7 wks	Tue 05/03/19	Mon 22/04/19	
1149	3.7.2.4 Move In Complete	0%	1 day	Mon 22/04/19	Mon 22/04/19	22/04
1150	3.7.3 Stage 6	0%	0.2 wks	Tue 23/04/19	Tue 23/04/19	
1151	3.7.3.1 Project Completion & Handover (RIBA Stage 6)	0%	1 day	Tue 23/04/19	Tue 23/04/19	23/04
1152	3.8 ES08 Granite Block Clinics (on-site)	9%	110.6 wks	Mon 02/01/17	Wed 13/02/19	
1153	3.8.1 Pre-Construction	22%	44.2 wks	Mon 02/01/17	Mon 06/11/17	
1154	3.8.1.1 Stage 1	100%	10 wks	Mon 02/01/17	Fri 10/03/17	
1157	3.8.1.2 Stage 2	33%	9 wks	Mon 27/02/17	Fri 28/04/17	
1163	3.8.1.3 Local consultants ITT process	79%	11.4 wks	Mon 13/03/17	Tue 30/05/17	
1169	3.8.1.4 Stage 3	0%	24.2 wks	Mon 22/05/17	Mon 06/11/17	
1178	3.8.1.5 Stage 4	0%	12.2 wks	Tue 04/07/17	Tue 26/09/17	
1185	3.8.1.6 Contractor Tender Stage	0%	12.2 wks	Tue 08/08/17	Tue 31/10/17	
1192	3.8.1.7 Enabling works Tender & Appointment	0%	3 wks	Tue 08/08/17	Mon 28/08/17	
1193	3.8.2 Stage 5 Construction	0%	66.2 wks	Tue 07/11/17	Tue 12/02/19	
1194	3.8.2.1 Construction Phase (RIBA Stage 5)	0%	62.2 wks	Tue 07/11/17	Tue 15/01/19	
1195	3.8.2.1.1 ES08 AM - Maternity relocation (Maternity)	0%	14 wks	Tue 07/11/17	Mon 12/02/18	
1196	3.8.2.1.2 Pathology Refurb & relocation	0%	16 wks	Tue 07/11/17	Mon 26/02/18	
1197	3.8.2.1.3 ES08 AN - Ante-Natal/Gynae relocation (Maternity)	0%	14 wks	Tue 13/02/18	Mon 21/05/18	
1198	3.8.2.1.4 ES08 B - Emergency Admissions relocation (Rayner)	0%	14 wks	Tue 22/05/18	Mon 27/08/18	
1199	3.8.2.1.5 ES08 C - Day Surgery & Minor Operations relocation	0%	14 wks	Tue 28/08/18	Mon 03/12/18	
1200	3.8.2.1.6 ES08 D - SCBU ward	0%	16 wks	Tue 07/11/17	Mon 26/02/18	
1201	3.8.2.1.7 GFL Catering relocation complete	0%	0 days	Fri 20/04/18	Fri 20/04/18	20/04
1202	3.8.2.1.8 GFL Catering refurb and OPD Clinics	0%	31 wks	Wed 13/06/18	Tue 15/01/19	
1203	3.8.2.2 Relocate Departmental Services	0%	4 wks	Wed 16/01/19	Tue 12/02/19	
1204	3.8.2.3 Move In Complete	0%	1 day	Tue 12/02/19	Tue 12/02/19	12/02
1205	3.8.3 Stage 6	0%	0.2 wks	Wed 13/02/19	Wed 13/02/19	
1206	3.8.3.1 Project Completion & Handover (RIBA Stage 6)	0%	1 day	Wed 13/02/19	Wed 13/02/19	13/02
1207	3.9 ES09 Critical Plant (on-site)	13%	111.2 wks	Mon 02/01/17	Mon 18/02/19	
1208	3.9.1 Pre-Construction	23%	44.2 wks	Mon 02/01/17	Mon 06/11/17	

Project: JFH & Westaway Court Programme (Option 4)
Date: Thu 12/10/17

Task		Project Summary		Manual Task		Start-only		Deadline	
Split		Inactive Task		Duration-only		Finish-only		Progress	
Milestone		Inactive Milestone		Manual Summary Rollup		External Tasks		Manual Progress	
Summary		Inactive Summary		Manual Summary		External Milestone			

ID	Task Name	% Complete	Duration	Start	Finish	
1209	3.9.1.1 Stage 1	100%	10 wks	Mon 02/01/17	Fri 10/03/17	
1210	3.9.1.1.1 RIBA Design Stage 1	100%	8 wks	Mon 02/01/17	Fri 24/02/17	
1211	3.9.1.1.2 RIBA Stage 1 signoff	100%	1 day	Fri 10/03/17	Fri 10/03/17	
1212	3.9.1.2 Stage 2	33%	9 wks	Mon 27/02/17	Fri 28/04/17	
1213	3.9.1.2.1 RIBA Design Stage 2	50%	6 wks	Mon 27/02/17	Fri 07/04/17	
1214	3.9.1.2.2 Stage 2 designs complete	0%	1 day	Fri 21/04/17	Fri 21/04/17	
1215	3.9.1.2.3 RIBA Stage 2 - PB review & signoff period	0%	3 wks	Mon 10/04/17	Fri 28/04/17	
1216	3.9.1.2.3.1 Clinical Review for comment & approval	0%	2 wks	Mon 10/04/17	Fri 21/04/17	
1217	3.9.1.2.3.2 PB submission and sign-off	0%	5 days	Mon 24/04/17	Fri 28/04/17	
1218	3.9.1.3 Local consultants ITT process	79%	11.4 wks	Mon 13/03/17	Tue 30/05/17	
1219	3.9.1.3.1 ITT Document Pack Collated	100%	1 day	Mon 13/03/17	Mon 13/03/17	
1220	3.9.1.3.2 Consultant Tender Procurement	100%	6 wks	Tue 14/03/17	Mon 24/04/17	
1221	3.9.1.3.3 Review & Evaluate Tender response	95%	3 wks	Tue 25/04/17	Mon 15/05/17	
1222	3.9.1.3.4 Appoint Design Team Consultants & HSPC	0%	1 day	Tue 16/05/17	Tue 16/05/17	
1223	3.9.1.3.5 Consultant contracts & document process	0%	2 wks	Wed 17/05/17	Tue 30/05/17	
1224	3.9.1.4 Stage 3	0%	24.2 wks	Mon 22/05/17	Mon 06/11/17	
1225	3.9.1.4.1 RIBA Design Stage 3	0%	6 wks	Mon 22/05/17	Fri 30/06/17	
1226	3.9.1.4.2 Stage 3 designs complete	0%	1 day	Mon 03/07/17	Mon 03/07/17	
1227	3.9.1.4.3 RIBA Stage 3 - PB review & signoff period	0%	3.2 wks	Mon 19/06/17	Mon 10/07/17	
1228	3.9.1.4.3.1 Clinical Review for comment & approval	0%	2 wks	Mon 19/06/17	Fri 30/06/17	
1229	3.9.1.4.3.2 PB submission and sign-off	0%	5 days	Tue 04/07/17	Mon 10/07/17	
1230	3.9.1.4.4 Planning & Bye-laws design	0%	4 wks	Tue 11/07/17	Mon 07/08/17	
1231	3.9.1.4.5 Landlords written approval for Planning application	0%	5 days	Tue 08/08/17	Mon 14/08/17	
1232	3.9.1.4.6 Planning & Bye-laws Submission & Approval	0%	12 wks	Tue 15/08/17	Mon 06/11/17	
1233	3.9.1.5 Stage 4	0%	11.2 wks	Tue 04/07/17	Tue 19/09/17	
1234	3.9.1.5.1 RIBA Design Stage 4	0%	8 wks	Tue 04/07/17	Mon 28/08/17	
1235	3.9.1.5.2 Design for Tender	0%	4 wks	Tue 04/07/17	Mon 31/07/17	
1236	3.9.1.5.3 Stage 4 designs complete	0%	1 day	Tue 19/09/17	Tue 19/09/17	
1237	3.9.1.5.4 RIBA Stage 4 - Tender signoff period	0%	3 wks	Tue 18/07/17	Mon 07/08/17	
1238	3.9.1.5.4.1 Clinical Review for comment & approval	0%	2 wks	Tue 18/07/17	Mon 31/07/17	
1239	3.9.1.5.4.2 Pre-Tender sign-off	0%	5 days	Tue 01/08/17	Mon 07/08/17	
1240	3.9.1.6 Contractor Tender Stage	0%	12.2 wks	Tue 08/08/17	Tue 31/10/17	
1241	3.9.1.6.1 ITT Contractor Pack issued	0%	1 day	Tue 08/08/17	Tue 08/08/17	
1242	3.9.1.6.2 Contractor Tender Procurement	0%	4 wks	Wed 09/08/17	Tue 05/09/17	
1243	3.9.1.6.3 Review and Evaluate ITT response	0%	1 wk	Wed 06/09/17	Tue 12/09/17	
1244	3.9.1.6.4 Interview & Appoint Principle Contractor	0%	1 wk	Wed 13/09/17	Tue 19/09/17	
1245	3.9.1.6.5 Process Bond application (Projects >£1M)	0%	6 wks	Wed 20/09/17	Tue 31/10/17	

Project: JFH & Westaway Court Programme (Option 4)
Date: Thu 12/10/17

Task		Project Summary		Manual Task		Start-only		Deadline	
Split		Inactive Task		Duration-only		Finish-only		Progress	
Milestone		Inactive Milestone		Manual Summary Rollup		External Tasks		Manual Progress	
Summary		Inactive Summary		Manual Summary		External Milestone			

ID	Task Name	% Comple	Duration	Start	Finish	
1246	3.9.1.6.6 Contractor contract & documents processed	0%	2 wks	Wed 20/09/17	Tue 03/10/17	
1247	3.9.1.7 Enabling works Tender & Appointment	0%	3 wks	Tue 08/08/17	Mon 28/08/17	
1248	3.9.2 Stage 5 Construction	0%	67 wks	Tue 07/11/17	Mon 18/02/19	
1249	3.9.2.1 Construction & Relocation Phase (RIBA Stage 5)	0%	67 wks	Tue 07/11/17	Mon 18/02/19	
1250	3.9.3 Stage 6	0%	0.2 wks	Mon 18/02/19	Mon 18/02/19	
1251	3.9.3.1 Project Completion & Handover (RIBA Stage 6)	0%	1 day	Mon 18/02/19	Mon 18/02/19	
1252	3.10 ES10 Staff Accommodation (off-site)	56%	31.8 wks	Mon 13/03/17	Fri 20/10/17	
1253	3.10.1 Identify and Agree New Accommodation	75%	4 wks	Mon 13/03/17	Fri 07/04/17	
1254	3.10.2 Agreements	50%	12 wks	Mon 10/04/17	Fri 30/06/17	
1255	3.10.2.1 Negotiate HoT and agree with Andium	50%	4 wks	Mon 10/04/17	Fri 05/05/17	
1256	3.10.2.2 Get Ministerial Approval & Initiate SO 168	100%	4 wks	Mon 08/05/17	Fri 02/06/17	
1257	3.10.2.3 Final Negotiations & Agreement	0%	4 wks	Mon 05/06/17	Fri 30/06/17	
1258	3.10.3 Vacant possession granted	0%	0 wks	Fri 20/10/17	Fri 20/10/17	
1259	4 HIA - Health Impact Assessment	12%	450.8 wks	Mon 17/10/16	Thu 05/06/25	
1260	4.1 HIA Stage 1 - follows components of EIA	0%	60 days	Thu 29/06/17	Wed 20/09/17	
1261	4.2 Island current position	0%	60 days	Thu 29/06/17	Wed 20/09/17	
1262	4.3 Local Interim - Red line plan for Phased Delivery	0%	60 days	Thu 29/06/17	Wed 20/09/17	
1263	4.4 HIA Stage 2 - 2025 post services transfer	38%	450.8 wks	Mon 17/10/16	Thu 05/06/25	
1264	4.4.1 Island Final Outcome	0%	60 days	Mon 17/10/16	Fri 06/01/17	
1265	4.4.2 Local Impact - Red Line Plan	75%	60 days	Fri 14/03/25	Thu 05/06/25	
1266	4.5 Output Services Information (D10)	0%	76.2 wks	Mon 17/10/16	Mon 02/04/18	
1267	4.5.1 Output Specification Developed (B1002)	0%	40 days	Tue 05/12/17	Mon 29/01/18	
1268	4.5.2 Acute Services Planning (B1003)	0%	20 days	Tue 30/01/18	Mon 26/02/18	
1269	4.5.3 Outline Patient Safety Case (B1004)	0%	20 days	Tue 27/02/18	Mon 26/03/18	
1270	4.5.4 Presenting the Draft Output Specification (B1005)	0%	5 days	Tue 27/03/18	Mon 02/04/18	
1271	4.5.5 Output Specification (B1006)	0%	0 days	Mon 17/10/16	Mon 17/10/16	
1272	5 Outline Business Case (OBC) (D8)	1%	19.8 wks?	Mon 24/07/17	Thu 07/12/17	
1273	5.1 Document Production and Publication	3%	8.6 wks?	Mon 24/07/17	Wed 20/09/17	
1274	5.1.1 Management Case: A.20, A.21, A.22, A.23, A.24	0%	6 wks?	Mon 24/07/17	Fri 01/09/17	
1275	5.1.2 Developing OBC detailed drafting period (B802)	100%	0.2 wks?	Wed 30/08/17	Wed 20/09/17	
1276	5.1.3 1st Document Release - ICA and Project Team	0%	1 day	Wed 20/09/17	Wed 20/09/17	
1277	5.2 Gateway 2 Review	0%	1.8 wks	Thu 21/09/17	Tue 03/10/17	
1278	5.2.1 2nd Document Release to BCRG 7	0%	4 days	Thu 21/09/17	Tue 26/09/17	
1279	5.2.2 Document Editing	0%	4 days	Wed 27/09/17	Mon 02/10/17	
1280	5.2.3 Final document release - all review groups	0%	1 day	Tue 03/10/17	Tue 03/10/17	
1281	5.2.4 Printing and Publication Period	0%	3 days	Wed 04/10/17	Fri 06/10/17	
1282	5.3 Delivery of the OBC (B805)	0%	0 wks	Tue 03/10/17	Tue 03/10/17	

Project: JFH & Westaway Court Programme (Option 4)
Date: Thu 12/10/17

Task		Project Summary		Manual Task		Start-only		Deadline	
Split		Inactive Task		Duration-only		Finish-only		Progress	
Milestone		Inactive Milestone		Manual Summary Rollup		External Tasks		Manual Progress	
Summary		Inactive Summary		Manual Summary		External Milestone			

ID	Task Name	% Complete	Duration	Start	Finish	
1283	5.4 Assurance Review (D16)	0%	9 wks	Tue 03/10/17	Mon 04/12/17	
1284	5.5 Investment Decision (D17)	0%	0.6 wks	Tue 05/12/17	Thu 07/12/17	
1285	5.5.1 Notice to Proceed issued	0%	3 days	Tue 05/12/17	Thu 07/12/17	
1286	6 Full Business Case (D15)	0%	42 wks	Fri 08/12/17	Thu 27/09/18	
1287	6.1 General Background (B1402)	0%	12 wks	Fri 08/12/17	Thu 01/03/18	
1288	6.2 Consultant's Services (B1403)	0%	30 wks	Fri 02/03/18	Thu 27/09/18	
1289	6.3 Full Business Case Completed (B1404)	0%	0 wks	Thu 27/09/18	Thu 27/09/18	
1290	7 MSCP Patriotic St (By Others - On Island Contractor)	0%	70 wks	Wed 24/04/19	Tue 25/08/20	
1291	7.1 Construction mobilisation (D24)	0%	8 wks	Wed 24/04/19	Tue 18/06/19	
1292	7.2 Phased Demolitions, Asbestos/Core Enabling - 2 levels per phase	0%	20 wks	Wed 19/06/19	Tue 05/11/19	
1293	7.3 Phased construction (D24) 2 levels per phase	0%	42 wks	Wed 06/11/19	Tue 25/08/20	
1294	8 Risk Workshop - Quarterly	60%	36.4 wks	Tue 04/04/17	Wed 13/12/17	
1295	8.1 Quarterly Risk Review	100%	1 day	Tue 04/04/17	Tue 04/04/17	
1296	8.2 Quarterly Risk Review	100%	1 day	Mon 26/06/17	Mon 26/06/17	
1297	8.3 OBC Risk Workshop	100%	0.2 wks	Thu 17/08/17	Thu 17/08/17	
1298	8.4 Quarterly Risk Review	0%	1 day	Mon 25/09/17	Mon 25/09/17	
1299	8.5 Quarterly Risk Review	0%	1 day	Wed 13/12/17	Wed 13/12/17	

Project: JFH & Westaway Court Programme (Option 4) Date: Thu 12/10/17	Task		Project Summary		Manual Task		Start-only		Deadline	
	Split		Inactive Task		Duration-only		Finish-only		Progress	
	Milestone		Inactive Milestone		Manual Summary Rollup		External Tasks		Manual Progress	
	Summary		Inactive Summary		Manual Summary		External Milestone			

2 Phase 1 - Departmental Benchmarking

This template is based on "A Guide to the Project Management Body of Knowledge" (PMBOK), Third Edition. Numbers in parenthesis (3.1.1.n) refer to the specific process numbering convention used by PMBOK. Additional details about the process can be found in the referenced section of the PMBOK Guide. This schedule shows activities in a standard start-to-finish dependency relationship. In reality, the processes overlap and the dependencies may need to change to reflect that. This template is intended to show the general flow of work in the PM Life Cycle.

The purpose of this template is to help the project manager use the Project Management Institute's (PMI) processes and knowledge areas as defined in the Project Management Body of Knowledge (PMBOK). The template incorporates the 5 processes and 9 knowledge areas defined in the PMBOK to help the user understand and identify all of the planning components that are important in successful project management. It does NOT attempt to identify best practices of organization for any specific industry or type of project. All durations are left at the default level of 1 day and all specific activities to complete a real project must be added to this schedule.

A PM using this template must understand the standards within his or her organization regarding project phases/stages. The project schedule should be built using those standards. This template is only useful in the early stages of initiation and planning as an aid for good PM practices. All phases beyond the initial planning should be replaced in their entirety by the appropriate phases for the project type.

NOTE: There are two terms that need to be explained as they are often used interchangeably in project management, but actually have very specific meanings in the PMBOK. A **Project Plan** is an all-encompassing document (typically completed in Word) that includes narrative descriptions of all facets of a project. The **Project Schedule** is a breakdown of the activities to be performed on the project typically completed using a scheduling tool such as Microsoft Office Project. The distinction between the two is important in this context because planning activities will include much more than the creation of a schedule.

6 Remainder of Specialty Workshop period

The purpose of a written "Project Plan" : (1) It is a formal, approved document used to manage and control project execution; (2) it provides a detailed review of project time, cost, scope, resources, risk, and other controls necessary for management to approve all required funding and staffing; (3) this document is expected to change over time as more accurate information becomes available -- hence, the importance of change control.

This section of the document continues to use PMBOK, Third Edition, pages 61-69, as the main source. Each of the nine Knowledge Areas should be reviewed and planned as appropriate for the size and complexity of the project. There are many activities to be performed in the creation of a Project Plan (and the associated schedule). We have only identified the top level of these activities. The processes are identified by their process group/subgroup number. See the numbers in parenthesis next to the identified process/sub process. More detail can be found in the reference to explain the purpose and expectations around the process.

19 Coordination Meeting - Submission of proposed Interventions [2i]

Scope management is performed by identifying the work that needs to be done and decomposing it into identifiable packages. This may be done using a white board, 'sticky note' exercise. It is done prior to using Microsoft Office Project to establish the detailed activity level.

A work breakdown structure (WBS) defines the work to be performed in a noun-based structure. It defines "What" will be created but does not define "How." A WBS is subdivided to the lowest appropriate level, called the work package. Work packages contain a set of activities and tasks that will provide the lowest level of the schedule where resources are applied to perform the work. See the ANSI 748 standard for more information on WBS structure. Proper construction of the WBS and work packages is essential for accurate earned value calculation.

77 Phase 4 - Benefits collation

This step is the point at which the integration of all previous planning activities must come together. There may be a series of iterations through developing activity plans, developing resource, budget, and risk plans that correspond to the activities. In addition, the planning must look at the project as a whole and review project-level risks, communication, procurement, quality, HR, and other factors in a holistic sense.

Base the schedule baseline on the time and resource effort needed to achieve project milestones and deliverables. A formal change control should be applied with a pre-determined threshold limit (e.g., 10% over original estimate requires formal management approval before a new baseline can be established).

The budget baseline should be driven by the schedule and other cost assumptions. A pre-determined threshold limit should also be defined (e.g., 10% over the original budget requires formal management approval before the new baseline is allowed).

870 ES03 Clinics to GFL vacated catering (on-site) Phased Start (into ES08)

Phased start to show link to ES01