



# Channel Islands Cancer Registration Report

December 2008  
Incorporating 2004–06 data



## **CONFIDENTIALITY WARNING**

Statistics based on a count of fewer than 5 people are regarded as potentially patient identifiable or disclosive. It is recommended that these small numbers are not published in the public domain.



# **Channel Islands Cancer Registration Report December 2008 Incorporating 2004–06 data**

**Author: Matthew Iles**

Date: December 2008

Cancer Intelligence Service,  
South West Public Health Observatory

Grosvenor House  
149 Whiteladies Road  
Bristol BS8 2RA  
Tel: 0117 970 6474

General enquiries:  
[info@swpho.nhs.uk](mailto:info@swpho.nhs.uk)

Website address:  
[www.swpho.nhs.uk](http://www.swpho.nhs.uk)

# Contents

<b>Introduction</b> .....	<b>1</b>
<b>Discussion</b> .....	<b>2</b>
Incidence.....	2
Mortality.....	3
Relative survival.....	4
Data quality .....	4
<b>New cases of cancer, 2004–2006</b> .....	<b>5</b>
New cases registered each year.....	5
Proportion of new cases by site, 2004–2006.....	7
Average number of new cases and median age at diagnosis, 2004–2006.....	8
New cases by ICD–10 site, 2004–2006.....	9
New cases by 5-year age band in 2006 .....	12
New cases by ICD-10 site, 2002–2006 .....	13
<b>New cases, rates and trends by site</b> .....	<b>14</b>
All malignancies (C00–C97 excluding C44) .....	14
Head and neck cancer (C00–C14, C30–C32, C73) .....	15
Upper gastro-intestinal cancer (C15, C16, C25).....	16
Colorectal cancer (C18–C21) .....	17
Lung cancer (C33 and C34).....	18
Malignant melanoma (C43).....	19
Female* breast cancer (C50).....	20
Gynaecological cancer (C51–C58) .....	21
Male genital cancer (C60–C63) .....	22
Urological cancer (C64–C68).....	23
Other sites 2006.....	24
<b>Mortality</b> .....	<b>25</b>
Mortality – unknown causes of death .....	25
Mortality – unknown causes of death by 5-year age band in 2004-2006 .....	26
Mortality – known causes of cancer death.....	27
Mortality – known causes of cancer death by 5 year age band in 2004-2006 .....	28
<b>Survival</b> .....	<b>29</b>
Relative survival.....	29
Lung cancer relative survival .....	29
Colorectal cancer relative survival .....	29
Female breast cancer relative survival .....	30
Prostate cancer relative survival .....	30
<b>Data quality 2006</b> .....	<b>31</b>
Completeness of staging 2006 .....	32
Completeness of treatment recorded .....	32
Location of treatment in 2006 .....	33
Completeness of histology 2006.....	34
Populations 2002–2006 .....	35

# Introduction

The South West Cancer Intelligence Service (SWCIS) has assisted the cancer registration process for the Channel Islands since January 1996. This is the 7th annual report from this service to incorporate data for Jersey and Guernsey. Data for the South West of England are provided for comparison. Incidence rates have been standardised to the European standard population.

Channel Island cancer registrations are derived from three primary sources:

- Paper-based registration forms received from Guernsey Departments of Health, electronic downloads of PAS (Patient Administration System) and Pathology from Jersey and paper registration forms direct from GP practices on the islands. These give details of hospital episodes, pathology and death notification.
- Hospital episodes data from mainland NHS hospitals
- Pathology data from mainland NHS hospitals.

Other sources include downloads from other regional cancer registries e.g. Thames, to enable complete registration for cases treated outside the South West region. SWCIS also obtains radiotherapy and chemotherapy data from treatment centres but at present this is not completely collected.

Tumours currently registered by the SWCIS:

	Ref ICD 10
All malignant neoplasms	C00–C97
In situ neoplasms	D00–D09
Benign neoplasm of cerebral meninges, brain and other CNS	D32–D33
Benign neoplasms of pituitary gland, craniopharyngeal duct, and pineal gland	D352–D354
Neoplasms of uncertain/unknown behaviour	D37–D48

# Discussion

## Incidence

### Counts

- On Jersey there were, on average, around 920 new tumours registered each year between 2004 and 2006. Of these, 53% were malignant tumours (other than non-melanoma skin), 29% were non-melanoma skin cancers and 18% were benign or in situ tumours.
- On Guernsey there were, on average, around 596 new tumours registered each year between 2004 and 2006. Of these, 53% were malignant tumours (other than non-melanoma skin), 34% were non-melanoma skin cancers and 13% were benign or in situ tumours. The number of cancers in 2006 was significantly lower than in previous years. Though the reasons for this are not clear despite extensive data quality checks.

### Rates

- Guernsey and Jersey have a significantly higher five year age standardised rate (2002-2006) for malignant cancer excluding non-melanoma skin cancer than the South West (see page 13). Guernsey had a significantly higher rate compared with the South West in 2005, while Jersey was significantly higher in 2004 (see page 14, upper left graph). Prior to the use of PAS data for registration the Channel Islands typically had lower rates than the South West region.
- Age specific rates for all malignant cancers (p14, upper right graph) for Jersey and Guernsey are slightly in excess of the values of the South West. Historically both Channel Islands had rates that were lower for the higher age groups (70-79 and 80+). As noted in the 2007 report, this change may indicate better data capture in these age groups due to the inclusion of PAS data.
- Lung cancer five year age standardised rates are significantly higher in both the Channel Islands compared with the South West (p13), with rates for Guernsey significantly higher in 2004 and rates for Jersey significantly higher in 2006 (p18 upper left graph). Rates of lung cancer vary widely in the South West. High rates are usually associated with increased smoking and show a clear positive association with increasing socio-economic deprivation.
- Breast cancer five year age standardised rates in Guernsey are typical of the South West region, while in Jersey they are significantly lower than the South West (p13). In the South West, breast cancer rates have increased due to an increased participation in the national breast screening programme and changes in lifestyle such as dietary and reproductive choices. Uptake of screening varies across the different socio-economic groups, and is significantly higher in patients resident in more affluent areas.
- Head and neck cancer five year age standardised rates in both the Channel Islands are significantly higher than the South West (p13). Guernsey rates have been significantly higher in one of the last three

years, while significantly high in all of the last three years in Jersey (p15, upper left graph).

- Malignant melanoma five year age standardised rates are higher in Jersey in comparison to the South West (p13), with rates significantly higher in 2004. Rates in Guernsey are typical of the South West. Variations in the incidence of malignant melanoma are thought to be due to differences in lifestyle (principally exposure to sunlight).
- Male genital cancer five year age standardised rates are significantly higher in Jersey compared with the South West, while significantly lower in Guernsey (p13). This pattern is due to the variation in rates of prostate cancer. The rates of genital cancer are affected by the uptake of PSA testing for prostate cancer, which shows a negative correlation with socio-economic deprivation.
- Rates of urological cancers in Guernsey (p13) are significantly high in comparison to the South West.
- Rates of leukaemia in both Channel Islands (p13) are significantly low in comparison to the South West
- Rates of lymphoma in Jersey (p13) are significantly lower than the South West, though rates in Guernsey are typical of the South West.
- Rates of gynaecological cancers in Jersey (p13) are significantly lower than the South West, while rates in Guernsey are typical of the South West.

## Mortality

- The table below gives the proportion of cancers with an unknown cause of death as a percentage of the total number of deaths in people with a cancer diagnosis.

	2004	2005	2006
Guernsey	5%	7%	10%
Jersey	39%	4%	1%

- For Jersey, the cancers most likely to have a missing cause of death (excluding non-melanoma skin cancer) in 2004 are (percentage of deaths with no cause recorded by site of diagnosis): female head and neck (100%) female gynaecological (69%), and male urological (67%) (p25).

Of the known causes of cancer death (ICD-10 C00-C97):

- Lung (22%), upper gastrointestinal (13%) and gynae/genital (12%) cancer contributed most to the deaths from cancer in Guernsey and Jersey in 2004 to 2006 combined, (p27).
- The observed number of deaths from all cancers excluding non-melanoma skin cancers recorded in both Guernsey and Jersey in the last 3 years is typical of the South West (p27).

## Relative survival

- Relative survival rates for each of the four major cancer sites for both Guernsey and Jersey are largely typical of the South West region (p29-30).
- Lung cancer relative survival is the worst of the four major cancer sites. In the South West, typically fewer than 10% of patients are still alive five years after diagnosis.
- Breast and prostate cancer relative survival rates are over 80% in the Channel Islands, consistent with the South West (p30), though survival from prostate cancer in Jersey is higher than in the South West. Survival rates in prostate cancer are difficult to interpret as the cohort of patients measured is strongly affected by the prevalence of PSA testing.
- Colorectal survival rates are not as high as breast or prostate cancer, at around 60%, and are typical of the South West (p29).

## Data quality

- Registrations for lung and cervix (invasive) cancer do not currently meet the UKACR standard of pathological confirmation.
- Staging standards are now being met for two of the four key cancer sites for the Channel Islands, breast and cervix, although staging standards have not been met for melanoma and colorectal cancer (p31)
- The low proportion of radiotherapy and chemotherapy reported reflects the difficulty of collecting data for these treatments (p32).



## New cases of cancer, 2004–2006

### New cases registered each year

	Guernsey			Jersey		
	2004	2005	2006	2004	2005	2006
All registrations including <i>in situ</i> and benign tumours	649	627	512	908	909	943
All malignant neoplasms	559	549	443	763	719	784
All malignant neoplasms excl. non-melanoma skin	345	339	262	489	463	503

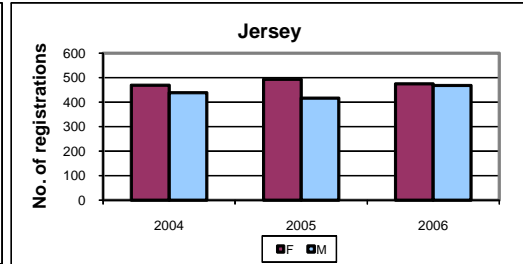
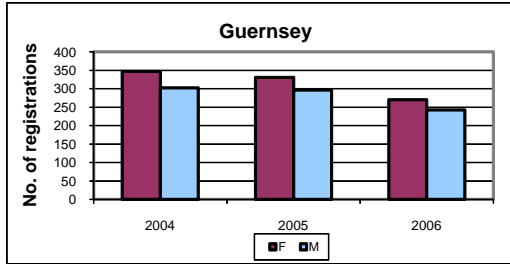
#### Male

	Guernsey			Jersey		
	2004	2005	2006	2004	2005	2006
All registrations including <i>in situ</i> and benign tumours	302	296	242	439	416	468
All malignant neoplasms	279	275	221	411	384	434
All malignant neoplasms excl. non-melanoma skin	166	172	129	275	236	282

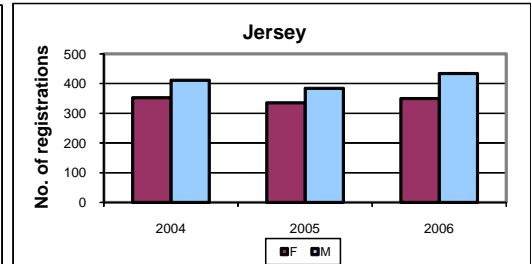
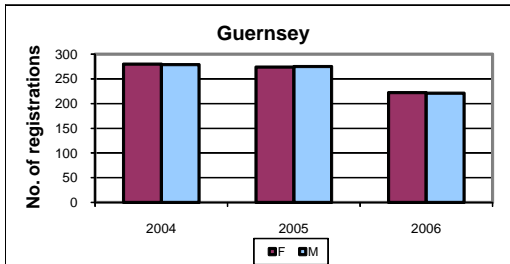
#### Female

	Guernsey			Jersey		
	2004	2005	2006	2004	2005	2006
All registrations including <i>in situ</i> and benign tumours	347	331	270	469	493	475
All malignant neoplasms	280	274	222	352	335	350
All malignant neoplasms excl. non-melanoma skin	179	167	133	214	227	221

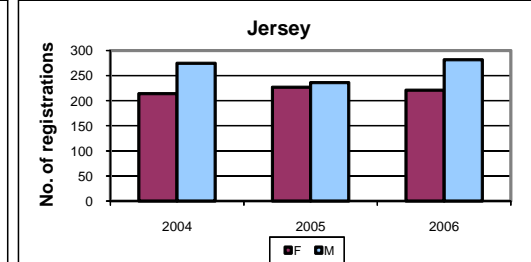
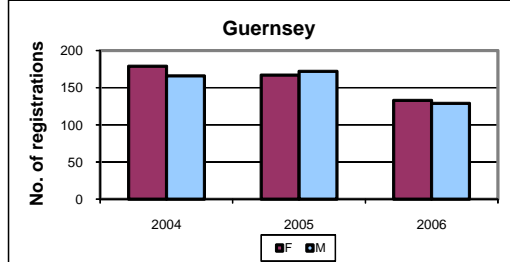
**All registrations including *in situ* and benign tumours**



**All malignant neoplasms (C00 - C97)**



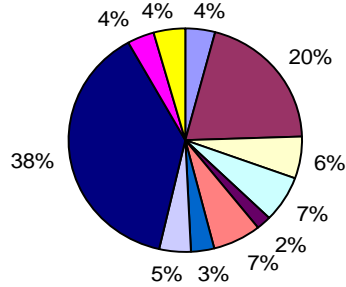
**All malignant neoplasms excluding non-melanoma skin cancer (C44)**



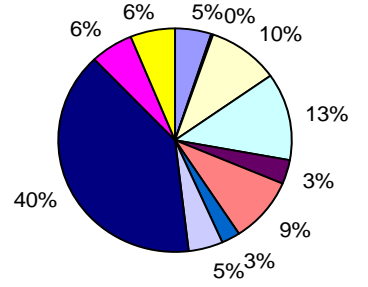
Note: Scales on graphs are not equivalent.

## Proportion of new cases by site (C00-C97) 2004-2006

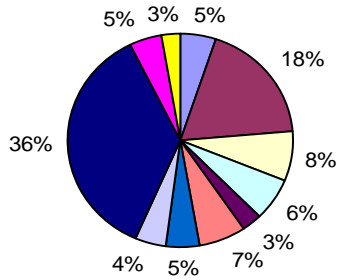
Guernsey females



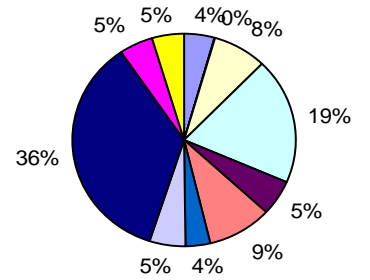
Guernsey males



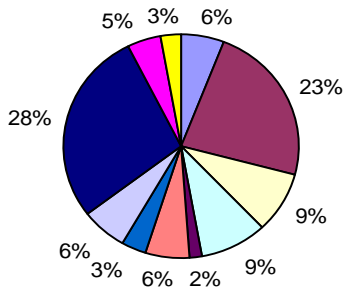
Jersey females



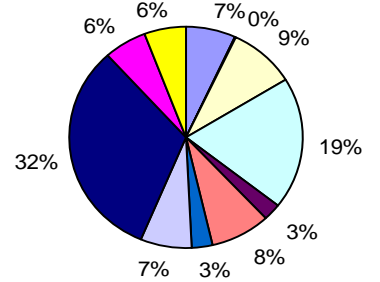
Jersey males



South West England females



South West England males



Blood/lymph (C81-C96)	Breast (C50)	Colorectal (C18-C21)
Gynaecological/Genital (C51-C58)/(C60-C63)	Head & Neck (C00-C14, C30-C32, C73)	Lung (C33, C34)
Malignant Melanoma (C43)	Other	Other Skin (C44)
Upper Gastrointestinal (C15, C16, C25)	Urological (C64-C68)	

## Average number of new cases and median age at diagnosis, 2004–2006

Cancer site (ICD 10 code)	Average annual no. of cases		Median age at diagnosis		
	Guernsey	Jersey	Guernsey	Jersey	SW England
All malignant neoplasms (C00-C97 excl. C44)	315	485	70	68	71
Head & Neck (C00-C14, C30-C32, C73)	14	32	60	60	63
Upper Gastrointestinal (C15, C16, C25)	25	36	73	71	74
Colorectal (C18-C21)	41	58	73	74	74
Hepatobiliary (C22-C24)	2	5	74	64	74
Lung (C33, C34)	42	62	74	71	73
Malignant Melanoma (C43)	15	31	63	58	63
Other Skin (C44)	202	270	69	68	73
Breast (C50)	53	64	61	61	63
Various gynaecological (C51, C52, C54, C55, C57, C58)	6	7	72	67	67
Cervix uteri (C53)	4	5	48	41	45
Ovarian (C56)	7	10	71	62	67
Prostate (C61)	30	71	70	70	73
Testicular (C62)	2	6	33	42	36
Bladder (C67)	17	16	74	76	76
Kidney and Ureter (C64-C66)	10	13	70	66	70
Brain and CNS (C70-C72)	4	7	60	56	62
Lymphoma (C81-C85, C96)	15	20	69	64	68
Leukaemia (C91-C95)	6	9	75	72	73
Paediatric - 0-14 years (C00-C97 excl. C44)	1	1	10	3	5

## New cases by ICD–10 Site, 2004–2006

ICD10	Site	Sex	Guernsey			Jersey		
			2004	2005	2006	2004	2005	2006
C00	Lip	F			1			1
		M						
C01	Tongue	F			1		1	
		M				2	3	1
C02	Tongue, unspecified	F	1	1			1	2
		M	1		1	1	3	3
C03	Gum	F					1	1
		M				1		
C04	Floor of mouth	F		1			1	1
		M	3	1		1	2	1
C05	Palate	F		2			1	
		M		1				
C06	Other unspecified mouth	F			2			
		M	1	1				2
C07	Parotid gland	F						1
		M				2		2
C09	Tonsil	F				4		
		M		2	1	1	1	6
C10	Oropharynx	F					2	1
		M			2		1	1
C11	Nasopharynx	F						
		M					1	
C12	Pyriform Sinus	F						
		M				1	2	3
C13	Hypopharynx	F						
		M		2		1	1	1
C14	Other ill defined sites: lip, oral cavity & pharynx	F				1		
		M				4	1	
C15	Oesophagus	F	2	2	4	6	3	7
		M	7	2	6	10	5	8
C16	Stomach	F	2	4	1	3	4	8
		M	6	5	4	8	6	14
C17	Small intestine	F	1	3			1	1
		M	1	1	2	3		
C18	Colon	F	15	17	5	19	17	21
		M	19	14	17	11	21	28
C19	Rectosigmoid junction	F		4		2		1
		M	2	2		2	2	1
C20	Rectum	F	1	3	2	3	2	7
		M	7	11	5	7	14	9
C21	Anus and anal canal	F				2	3	1
		M				1		
C22	Liver	F			2	2	1	1
		M	1		1	3	1	4
C23	Gall bladder	F			1		1	1
		M					1	
C24	Biliary tract	F						
		M				1		
C25	Pancreas	F	8	4	2	4	6	7
		M	7	8	1	1	5	3
C26	Other ill defined sites: digestive	F		1				
		M						
C32	Larynx	F		2				
		M	2	4	1	6	4	5
C33	Trachea	F						1
		M						
C34	Bronchus and Lung	F	22	20	10	24	23	22
		M	34	19	20	32	37	46
C38	Heart, mediastinum, pleura	F			1			
		M	1				1	
C40	Bone and articular cartilage of limbs	F						
		M				1	1	1

SWCIS Channel Islands Cancer Registration Report. December 2008. Incorporating 2004–06 data

C41	Bone, cartilage; unspecified sites	F					2	
		M				1		
C43	Melanoma	F	9	8	8	16	17	17
		M	6	10	4	19	14	11
C44	Other skin	F	101	107	89	138	108	129
		M	113	103	92	136	148	152
C45	Mesothelioma	F						
		M		1	2	2		1
C46	Kaposi's sarcoma	F						
		M	1					
C47	Peripheral and autonomic nervous system	F						
		M						1
C48	Retroperitoneum, peritoneum	F	1			1		1
		M						
C49	Other connective, soft tissue	F		2		1	1	1
		M	2	1	1			
C50	Breast	F	66	46	46	60	71	61
		M	1		1			1
C51	Vulva	F			1	1		
C52	Vagina	F		1	2		2	1
C53	Cervix uteri	F	6	4	3	6	8	2
C54	Corpus uteri	F	1	8	2	6	6	4
C55	Uteris, part unspecified	F	2		1			
C56	Ovary	F	7	6	7	7	6	18
C57	Other and unspecified female genital organs	F	1					
C60	Penis	M				1	2	1
C61	Prostate	M	29	36	26	92	51	70
C62	Testis	M	1	3	2	5	4	9
C63	Other & unspecified male genital organs	M			1		1	
C64	Kidney, except renal pelvis	F	5	5	4	7	2	2
		M	5	9		6	10	8
C65	Renal Pelvis	F				1		
		M				1		
C66	Ureter	F	2			1		
		M						
C67	Bladder	F	6	4	8	7	3	5
		M	10	14	10	14	4	14
C69	Eye & adnexa	F					2	
		M				1	2	1
C71	Brain	F	3	1	1		2	3
		M	2	2	3	5	5	4
C72	Spinal cord, cranial nerves and other parts of the central nervous system	F						
		M					1	
C73	Thyroid gland	F	2	3		3	6	2
		M	1	1	2		2	
C75	Other endocrine glands and related structures	F						
		M				1		
C76	Other & ill-defined sites	F	1				3	
		M						
C77	Secondary lymph nodes	F						
		M			1		1	
C78	Secondary respiratory/ digestive	F		1	3	1	7	1
		M	1	1	2	6	3	2
C79	Secondary unspecified	F	1			3	3	
		M	1	1	1		3	1
C80	No site specified	F	4	3	4	5	1	
		M	4	2	1	1	3	2
C81	Hodgkin's disease	F	3	1	1		2	
		M		3	2	2	2	1

SWCIS Channel Islands Cancer Registration Report. December 2008. Incorporating 2004–06 data

C82	Follicular non-Hodgkin's lymphoma	F	1	1	1	3	2
		M				1	2
C83	Diffuse non-Hodgkin's lymphoma	F	4	3	3	4	3
		M	4	7	3	6	2
C84	Peripheral/ cutaneous lymphoma	F			2		1
		M		1	2		2
C85	Other non-Hodgkin's lymphoma	F	1	5	1	4	4
		M	1	1	3	2	1
C88	Immunoproliferative diseases	F					
		M			1		1
C90	Multiple myeloma	F	2	2	1	4	2
		M	2	1		3	3
C91	Lymphoid leukaemia	F		1	2	4	1
		M		2	2	2	5
C92	Myeloid leukaemia	F		1	2	1	1
		M	3	2		1	2
C93	Monocytic Leukemia	F					1
		M					
C95	Leukaemia of unspecified cell type	F					
		M		2		1	1
Grand Total			559	549	443	763	719

Note: There were no registrations for sites C08, C30, C31, C37, C39, C58, C68, C70, C74, C94, C96 and C97

## New cases by 5-year age band in 2006

	All malignancies (excl. C44)	Head & Neck (C00-C14, C30-C32, C73)	Upper Gastrointestinal (C15, C16, C25)	Colorectal (C18-C21)	Lung (C33, C34)	Breast (C50)	Malignant Melanoma (C43)	Other Skin (C44)	Gynaecological (C51-C58)	Male Genital (C60-C63)	Urological (C64-C68)	Brain (C71)	Lymphoma (C81-C85, C96)	Leukaemia (C91-C95)
<b>Guernsey</b>														
00-04	1													
05-09	1												1	
10-14														
15-19														
20-24	1			1										
25-29	1						1							
30-34	4					1		3	2	1				
35-39	6			1		1	1	1	1			1	1	
40-44	8					4	1	4	1			1		
45-49	11	1		2	1	2	2	11		1	1	1		
50-54	18			1	3	7		11	2	1	1		2	
55-59	23	1	1	4	3	4	3	22	2	2	2		1	
60-64	21	3	3	1	1	8		28		1	1		2	
65-69	41	3	5	5	4	11	2	23	1	7	1			
70-74	36	1		3	6	5	1	26	3	3	2	1	2	2
75-79	31		2	5	4	3	1	19	2	4	4		2	1
80-84	29		4		6			17	1	4	9		3	1
85+	30	2	3	6	2	1		16	1	5	1		1	2
<b>Total</b>	<b>262</b>	<b>11</b>	<b>18</b>	<b>29</b>	<b>30</b>	<b>47</b>	<b>12</b>	<b>181</b>	<b>16</b>	<b>29</b>	<b>22</b>	<b>4</b>	<b>15</b>	<b>6</b>
<b>Jersey</b>														
00-04	1													
05-09														
10-14														
15-19	1	1												
20-24	2	1												
25-29	2						1						1	
30-34	7	1		1		2		4		1		2		
35-39	8		1			1	1	5	1	3				1
40-44	24	1	4	4	1	4	4	12	2	4				
45-49	14	1		1	2	3	3	14	1	2				
50-54	33	2	3	4		10	1	14		4	2	1	3	1
55-59	71	10	7	6	5	10	3	39	4	15	2	2	4	1
60-64	53	6	4	5	10	8	2	24	4	9	1		2	
65-69	66	3	6	5	11	5	5	42	5	13	6		1	1
70-74	66	5	6	10	14	3	3	36	2	11	7		2	2
75-79	59	1	7	9	12	7	3	31	3	6	3		3	1
80-84	50	2	4	13	7	4		30	1	6	4	2	2	2
85+	46		5	10	6	5	2	30	2	6	4			
<b>Total</b>	<b>503</b>	<b>34</b>	<b>47</b>	<b>68</b>	<b>68</b>	<b>62</b>	<b>28</b>	<b>281</b>	<b>25</b>	<b>80</b>	<b>29</b>	<b>7</b>	<b>18</b>	<b>9</b>



## New cases by ICD-10 Site, 2002–2006

The 5 year incidence rates reported are directly age standardised rates based on the number of new cases registered between 2002 and 2006. These rates were used in order to take into account the different age structures of the Channel Islands and the South Wes. These rates have been standardised to the European standard population.

Cancer Site	Guernsey				South West				ASR Significance Test	
	Count	ASR	se	Crude Rate	Count	ASR	se	Crude Rate	P-value	High/Low
All Malignancies (C00-C97 excl C44)	1577	419.3	10.9	521.4	141997	394.5	1.1	563.1	0.02	High
Head and Neck (C00-C14,C30-C32,C73)	74	21.9	2.6	24.6	4193	13.1	0.2	16.7	<0.01	High
Upper Gastrointestinal (C15-C16,C25)	125	31.5	2.9	41.4	10907	27.6	0.3	43.4	0.19	
Colorectal (C18-C21)	198	51.5	3.8	65.6	18182	46.5	0.4	72.2	0.18	
Lung (C33-C34)	188	48.8	3.7	62.3	14670	38.5	0.3	58.4	0.01	High
Malignant Melanoma (C43)	78	22.3	2.6	25.7	6138	19.2	0.3	24.3	0.24	
Female Breast (C50)	253	133.5	8.7	163.9	22959	132.4	0.9	176.4	0.90	
Gynaecological (C51-C58)	101	50.1	5.2	65.9	9251	52.3	0.6	71.6	0.68	
Male Genital (C60-C63)	177	102.5	7.8	118.5	20623	119.3	0.9	167.4	0.03	Low
Urological (C64-C68)	122	32.3	3.0	40.5	8695	23.4	0.3	34.8	<0.01	High
Oesophagus (C15)	38	10.5	1.8	12.6	3810	10.0	0.2	15.2	0.77	
Stomach (C16)	40	9.5	1.6	13.3	3326	8.3	0.2	13.3	0.46	
Colon (C18)	133	34.0	3.1	44.1	11829	29.2	0.3	46.9	0.12	
Rectum (C20)	49	12.9	1.9	16.3	4898	13.2	0.2	19.5	0.89	
Pancreas (C25)	47	11.5	1.8	15.5	3771	9.3	0.2	14.9	0.22	
Other Skin (C44)	1123	295.6	9.1	371.5	59024	157.0	0.7	234.6	<0.01	High
Cervix (C53)	24	13.1	2.7	15.7	1262	8.8	0.3	9.8	0.12	
Corpus Uteri (C54)	23	11.6	2.5	15.0	3317	18.4	0.3	25.7	<0.01	Low
Ovary (C56)	42	20.6	3.3	27.4	3766	20.7	0.4	29.2	0.96	
Prostate (C61)	161	92.7	7.4	107.8	19404	109.5	0.8	157.5	0.02	Low
Testis (C62)	13	8.1	2.3	8.7	947	8.0	0.3	7.7	0.97	
Kidney (C64)	38	10.6	1.8	12.6	3362	9.7	0.2	13.4	0.62	
Bladder (C67)	79	20.5	2.4	26.3	4788	12.3	0.2	19.2	<0.01	High
Brain (C71)	22	6.3	1.4	7.3	2223	7.3	0.2	8.9	0.46	
Lymphoma (C81-C85, C96)	80	20.8	2.4	26.5	6492	19.1	0.3	25.8	0.49	
Leukaemia (C91-C95)	32	7.6	1.4	10.6	3853	10.8	0.2	15.3	0.03	Low

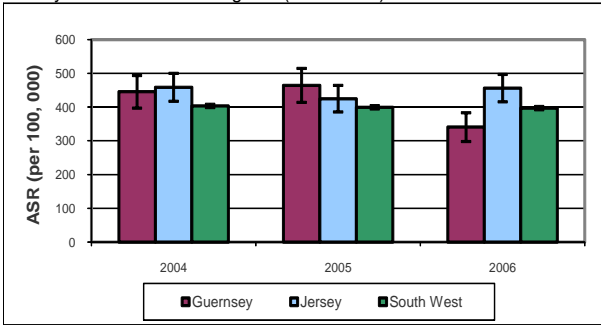
Cancer Site	Jersey				South West				ASR Significance Test	
	Count	ASR	se	Crude Rate	Count	ASR	se	Crude Rate	P-value	High/Low
All Malignancies (C00-C97 excl C44)	2317	429.6	9.1	527.3	141997	394.5	1.1	563.1	<0.01	High
Head and Neck (C00-C14,C30-C32,C73)	143	28.5	2.4	32.7	4193	13.1	0.2	16.7	<0.01	High
Upper Gastrointestinal (C15-C16,C25)	155	27.4	2.3	35.3	10907	27.6	0.3	43.4	0.93	
Colorectal (C18-C21)	272	46.9	2.9	61.9	18182	46.5	0.4	72.2	0.89	
Lung (C33-C34)	284	52.8	3.2	64.9	14670	38.5	0.3	58.4	<0.01	High
Malignant Melanoma (C43)	173	33.5	2.6	39.2	6138	19.2	0.3	24.3	<0.01	High
Female Breast (C50)	331	117.0	6.7	146.4	22959	132.4	0.9	176.4	0.02	Low
Gynaecological (C51-C58)	104	37.2	3.8	46.1	9251	52.3	0.6	71.6	<0.01	Low
Male Genital (C60-C63)	373	148.3	7.7	173.6	20623	119.3	0.9	167.4	<0.01	High
Urological (C64-C68)	135	24.4	2.2	30.9	8695	23.4	0.3	34.8	0.67	
Oesophagus (C15)	54	9.7	1.4	12.3	3810	10.0	0.2	15.2	0.81	
Stomach (C16)	57	10.2	1.4	13.1	3326	8.3	0.2	13.3	0.18	
Colon (C18)	173	28.6	2.3	39.3	11829	29.2	0.3	46.9	0.79	
Rectum (C20)	72	13.2	1.6	16.5	4898	13.2	0.2	19.5	0.96	
Pancreas (C25)	44	7.6	1.2	9.9	3771	9.3	0.2	14.9	0.15	
Other Skin (C44)	1272	233.2	6.7	289.5	59024	157.0	0.7	234.6	<0.01	High
Cervix (C53)	23	8.9	1.9	10.2	1262	8.8	0.3	9.8	0.98	
Corpus Uteri (C54)	26	9.4	1.9	11.5	3317	18.4	0.3	25.7	<0.01	Low
Ovary (C56)	49	17.2	2.5	21.7	3766	20.7	0.4	29.2	0.17	
Prostate (C61)	333	131.3	7.2	155.0	19404	109.5	0.8	157.5	<0.01	High
Testis (C62)	33	14.2	2.5	15.4	947	8.0	0.3	7.7	0.01	High
Kidney (C64)	48	9.2	1.4	11.0	3362	9.7	0.2	13.4	0.68	
Bladder (C67)	83	14.4	1.6	19.0	4788	12.3	0.2	19.2	0.19	
Brain (C71)	30	6.2	1.2	6.9	2223	7.3	0.2	8.9	0.33	
Lymphoma (C81-C85, C96)	75	14.4	1.7	17.0	6492	19.1	0.3	25.8	<0.01	Low
Leukaemia (C91-C95)	41	6.8	1.1	9.3	3853	10.8	0.2	15.3	<0.01	Low

Note: ASR significance test is at 5% significance level. "se" is the standard error in the age standardised rate.

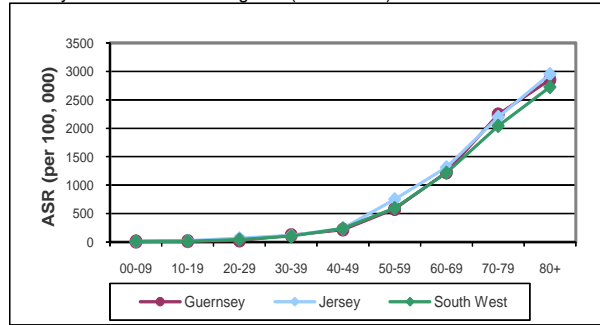
# New cases, rates and trends by site

## All malignancies (C00–C97 excluding C44)

Age standardised incidence rates for Guernsey, Jersey and South West England (2004-2006)



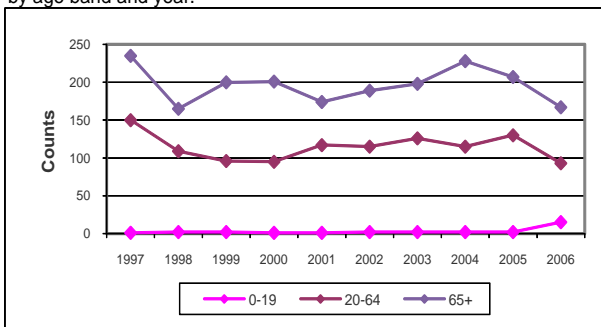
Age specific incidence rates for Guernsey, Jersey and South West England (2004-2006)



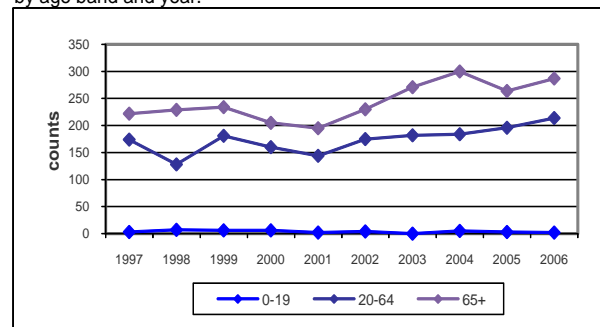
Age standardised incidence rates (ASR) with confidence limits, number of new cases and the crude rate (per 100, 000 population) for all malignancies in Guernsey, Jersey and South West England.

	Guernsey			Jersey			South West		
	2004	2005	2006	2004	2005	2006	2004	2005	2006
ASR	445.7	464.4	340.7	459.0	425.0	456.5	403.2	399.5	397.0
±(2se)	49.5	51.5	43.4	42.2	40.4	41.4	5.0	4.9	4.9
New cases	345	339	262	489	463	503	28926	29180	29136
Crude Rate	571.4	561.4	429.3	556.1	525.3	569.4	573.7	573.6	568.6

New cases registered with all malignancies in Guernsey by age band and year.



New cases registered with all malignancies in Jersey by age band and year.

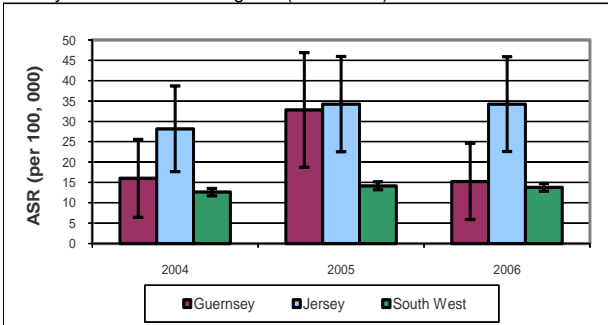


Number of new cases and incidence rate (per 100, 000 population) for all malignancies in Guernsey, Jersey and South West England in 2006 by age band.

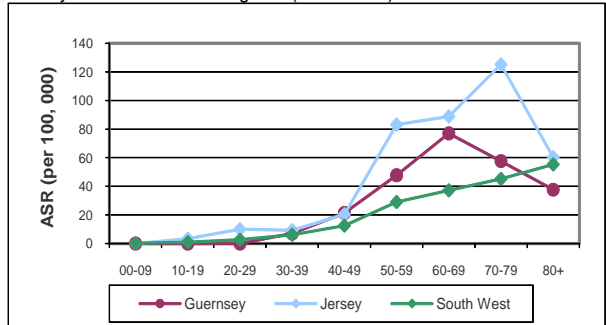
	Guernsey			Jersey			South West		
	0-19	20-64	65+	0-19	20-64	65+	0-19	20-64	65+
New cases	2	93	167	2	214	287	205	10069	18862
Crude Rate	15.0	244.2	1745.0	10.2	388.4	2110.1	17.2	338.6	1965.6

## Head and neck cancer (C00–C14, C30–C32, C73)

Age standardised incidence rates for Guernsey, Jersey and South West England (2004-2006)



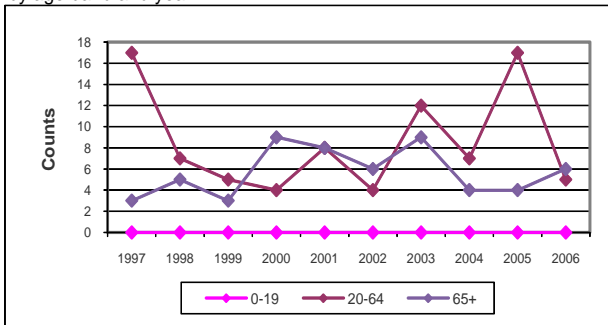
Age specific incidence rates for Guernsey, Jersey and South West England (2004-2006)



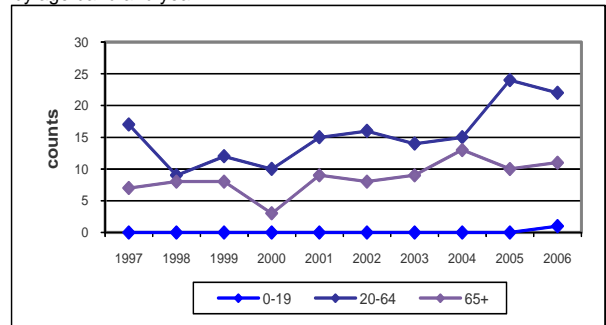
Age standardised incidence rates (ASR) with confidence limits, number of new cases and the crude rate (per 100, 000 population) for head and neck cancer in Guernsey, Jersey and South West England.

	Guernsey			Jersey			South West		
	2004	2005	2006	2004	2005	2006	2004	2005	2006
ASR	16.0	32.8	15.3	28.2	34.3	34.2	12.6	14.2	13.8
±(2se)	9.8	14.4	9.6	10.7	11.9	11.9	0.9	1.0	1.0
New cases	11	21	11	28	34	34	809	899	916
Crude Rate	18.2	34.8	18.0	31.8	38.6	38.5	16.0	17.7	17.9

New cases registered with head and neck cancer in Guernsey by age band and year.



New cases registered with head and neck cancer in Jersey by age band and year.

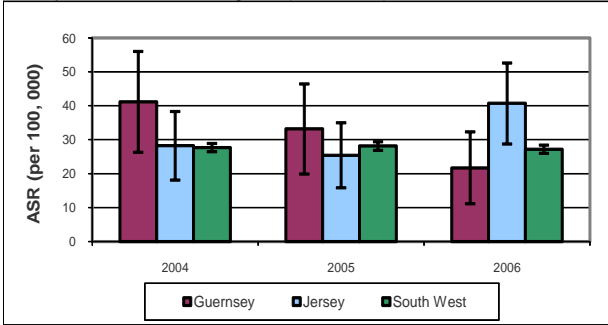


Number of new cases and incidence rate (per 100, 000 population) for head and neck cancer in Guernsey, Jersey and South West England in 2006 by age band.

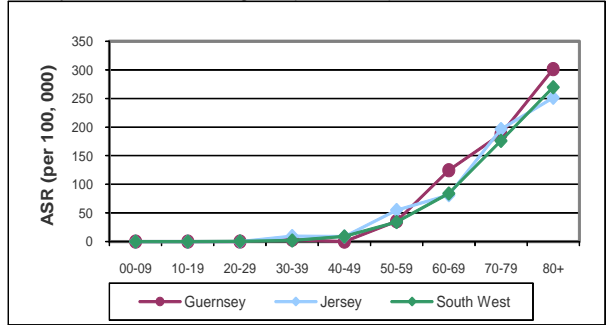
	Guernsey			Jersey			South West		
	0-19	20-64	65+	0-19	20-64	65+	0-19	20-64	65+
New cases	0	5	6	1	22	11	5	465	446
Crude Rate	0.0	13.1	62.7	5.1	39.9	80.9	0.4	15.6	46.5

## Upper gastro-intestinal cancer (C15, C16, C25)

Age standardised incidence rates for Guernsey, Jersey and South West England (2004-2006)



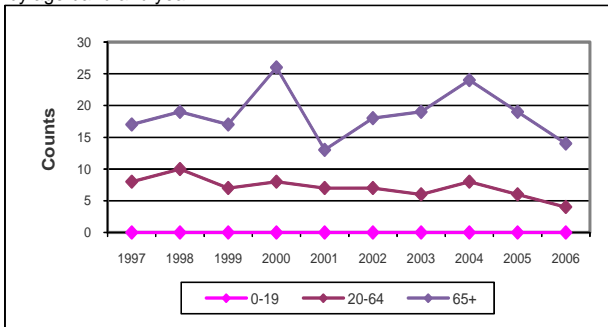
Age specific incidence rates for Guernsey, Jersey and South West England (2004-2006)



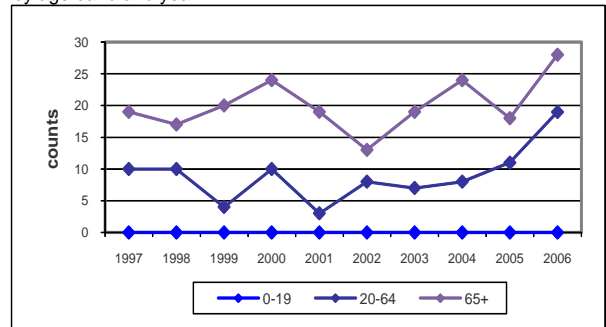
Age standardised incidence rates (ASR) with confidence limits, number of new cases and the crude rate (per 100, 000 population) for upper gastro-intestinal cancer in Guernsey, Jersey and South West England.

	Guernsey			Jersey			South West		
	2004	2005	2006	2004	2005	2006	2004	2005	2006
ASR	41.2	33.2	21.7	28.2	25.4	40.7	27.7	28.1	27.2
±(2se)	15.1	13.6	10.8	10.3	9.8	12.2	1.3	1.3	1.2
New cases	32	25	18	32	29	47	2168	2245	2192
Crude Rate	53.0	41.4	29.5	36.4	32.9	53.2	43.0	44.1	42.8

New cases registered with upper gastro-intestinal cancer in Guernsey by age band and year.



New cases registered with upper gastro-intestinal cancer in Jersey by age band and year.

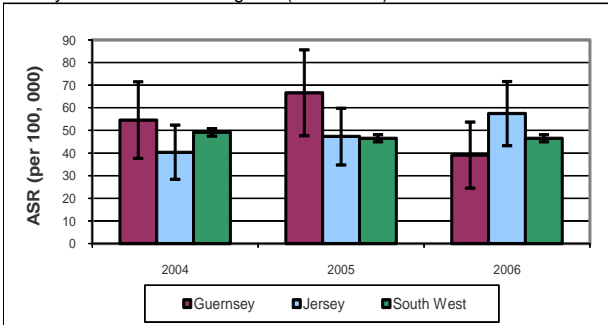


Number of new cases and incidence rate (per 100, 000 population) for upper gastro-intestinal cancer in Guernsey, Jersey and South West England in 2006 by age band.

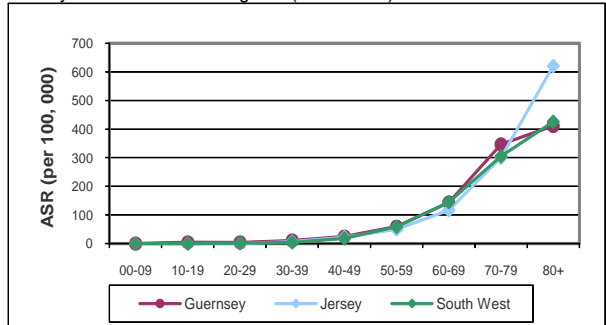
	Guernsey			Jersey			South West		
	0-19	20-64	65+	0-19	20-64	65+	0-19	20-64	65+
New cases	0	4	14	0	19	28	1	516	1675
Crude Rate	0.0	10.5	146.3	0.0	34.5	205.9	0.1	17.3	174.6

## Colorectal cancer (C18–C21)

Age standardised incidence rates for Guernsey, Jersey and South West England (2004-2006)



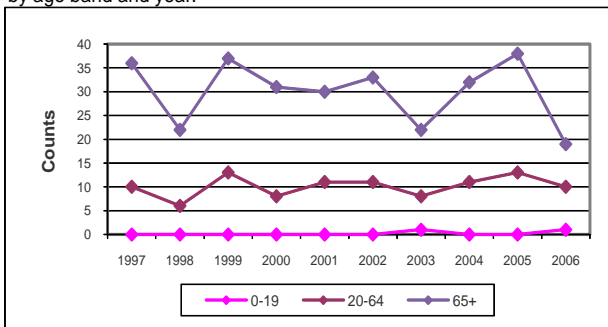
Age specific incidence rates for Guernsey, Jersey and South West England (2004-2006)



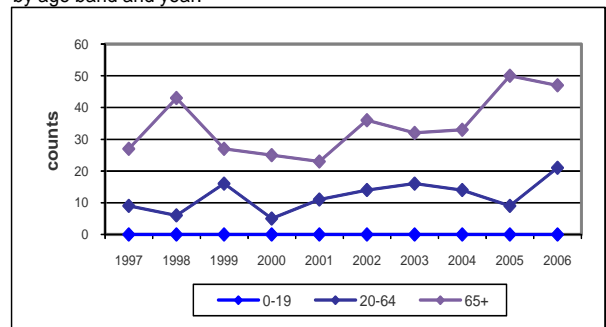
Age standardised incidence rates (ASR) with confidence limits, number of new cases and the crude rate (per 100, 000 population) for colorectal cancer in Guernsey, Jersey and South West England.

	Guernsey			Jersey			South West		
	2004	2005	2006	2004	2005	2006	2004	2005	2006
ASR	54.6	66.6	39.1	40.4	47.3	57.4	49.2	46.6	46.5
±(2se)	17.3	19.4	15.0	12.2	12.8	14.4	1.7	1.6	1.6
New cases	44	51	29	47	59	68	3821	3718	3727
Crude Rate	72.9	84.5	47.5	53.5	66.9	77.0	75.8	73.1	72.7

New cases registered with colorectal cancer in Guernsey by age band and year.



New cases registered with colorectal cancer in Jersey by age band and year.

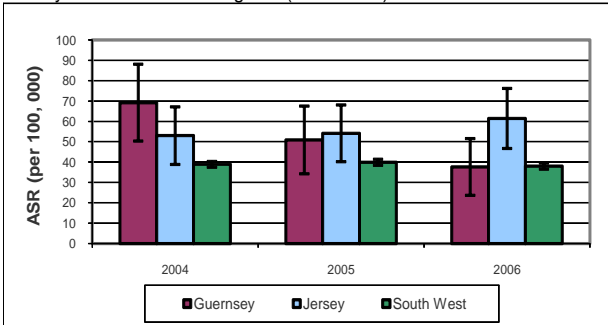


Number of new cases and incidence rate (per 100, 000 population) for colorectal cancer in Guernsey, Jersey and South West England in 2006 by age band.

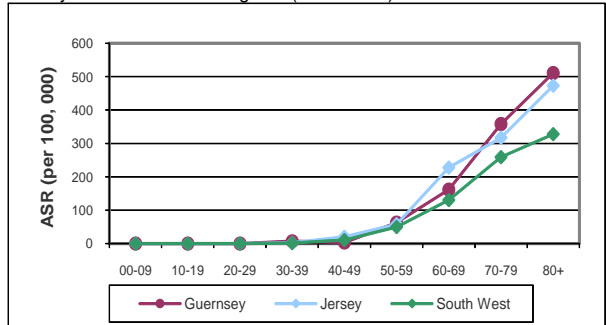
	Guernsey			Jersey			South West		
	0-19	20-64	65+	0-19	20-64	65+	0-19	20-64	65+
New cases	0	10	19	0	21	47	2	967	2758
Crude Rate	0.0	26.3	198.5	0.0	38.1	345.6	0.2	32.5	287.4

## Lung cancer (C33 and C34)

Age standardised incidence rates for Guernsey, Jersey and South West England (2004-2006)



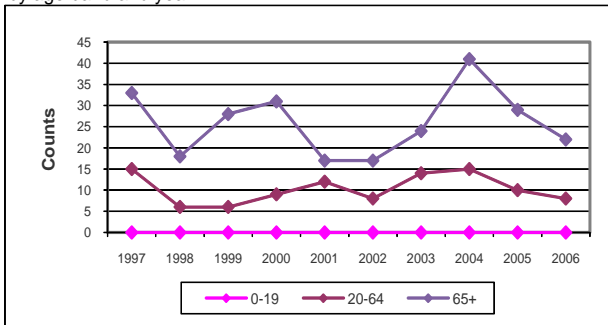
Age specific incidence rates for Guernsey, Jersey and South West England (2004-2006)



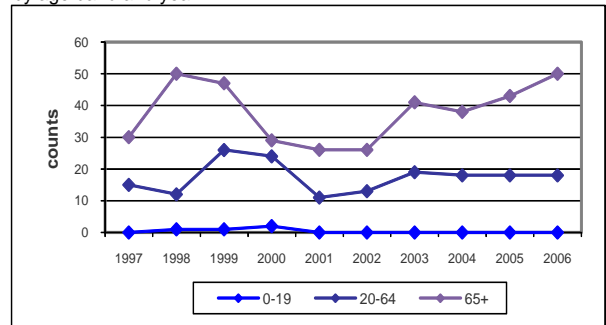
Age standardised incidence rates (ASR) with confidence limits, number of new cases and the crude rate (per 100, 000 population) for lung cancer in Guernsey, Jersey and South West England.

	Guernsey			Jersey			South West		
	2004	2005	2006	2004	2005	2006	2004	2005	2006
ASR	69.2	50.9	37.7	53.0	54.1	61.4	38.9	39.9	38.0
±(2se)	19.2	17.0	14.2	14.4	14.2	15.1	1.5	1.5	1.5
New cases	56	39	30	56	61	68	2950	3084	2960
Crude Rate	92.7	64.6	49.2	63.7	69.2	77.0	58.5	60.6	57.8

New cases registered with lung cancer in Guernsey by age band and year.



New cases registered with lung cancer in Jersey by age band and year.

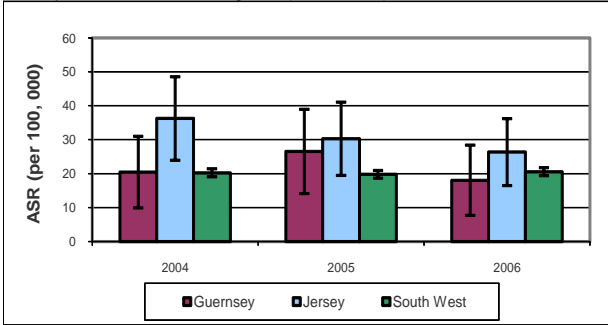


Number of new cases and incidence rate (per 100, 000 population) for lung cancer in Guernsey, Jersey and South West England in 2006 by age band.

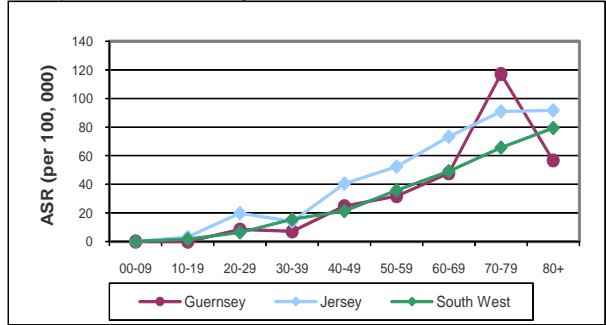
	Guernsey			Jersey			South West		
	0-19	20-64	65+	0-19	20-64	65+	0-19	20-64	65+
New cases	0	8	22	0	18	50	2	754	2204
Crude Rate	0.0	21.0	229.9	0.0	32.7	367.6	0.2	25.4	229.7

## Malignant melanoma (C43)

Age standardised incidence rates for Guernsey, Jersey and South West England (2004-2006)



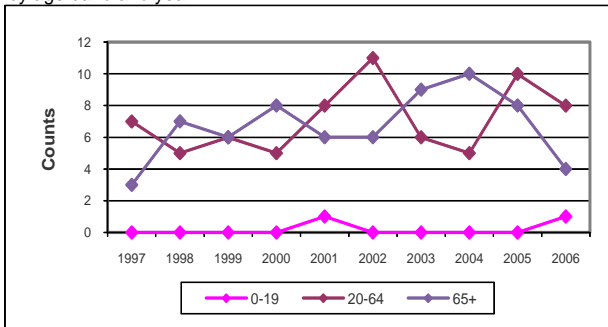
Age specific incidence rates for Guernsey, Jersey and South West England (2004-2006)



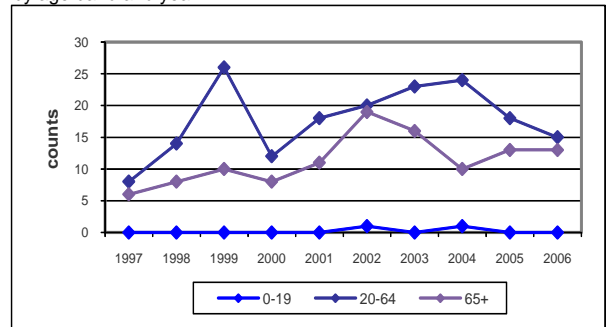
Age standardised incidence rates (ASR) with confidence limits, number of new cases and the crude rate (per 100,000 population) for malignant melanoma in Guernsey, Jersey and South West England.

	Guernsey			Jersey			South West		
	2004	2005	2006	2004	2005	2006	2004	2005	2006
ASR	20.4	26.6	18.1	36.3	30.3	26.4	20.2	19.8	20.6
±(2se)	10.8	12.7	10.5	12.6	11.0	10.1	1.2	1.2	1.2
New cases	15	18	12	35	31	28	1298	1283	1328
Crude Rate	24.8	29.8	19.7	39.8	35.2	31.7	25.7	25.2	25.9

New cases registered with malignant melanoma in Guernsey by age band and year.



New cases registered with malignant melanoma in Jersey by age band and year.

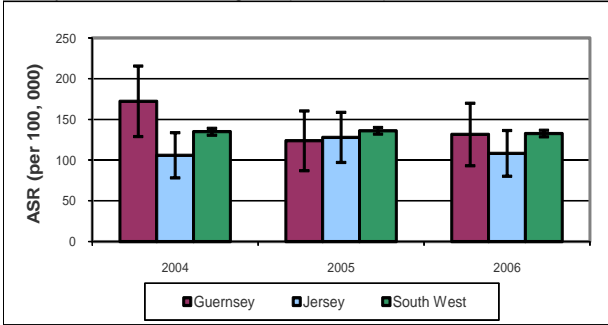


Number of new cases and incidence rate (per 100,000 population) for malignant melanoma in Guernsey, Jersey and South West England in 2006 by age band.

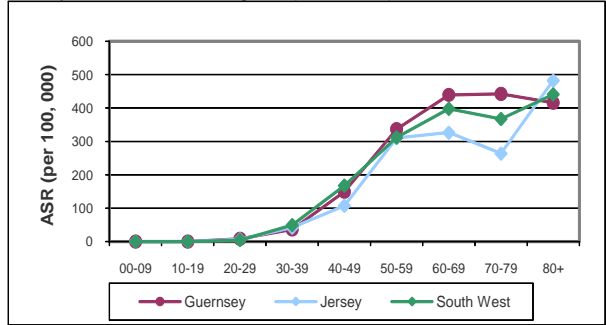
	Guernsey			Jersey			South West		
	0-19	20-64	65+	0-19	20-64	65+	0-19	20-64	65+
New cases	0	8	4	0	15	13	13	708	607
Crude Rate	0.0	21.0	41.8	0.0	27.2	95.6	1.1	23.8	63.3

## Female\* breast cancer (C50)

Age standardised incidence rates for Guernsey, Jersey and South West England (2004-2006)



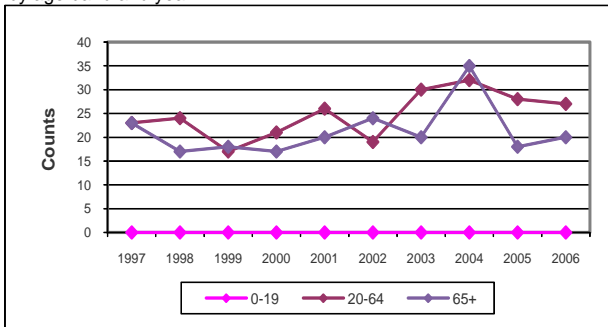
Age specific incidence rates for Guernsey, Jersey and South West England (2004-2006)



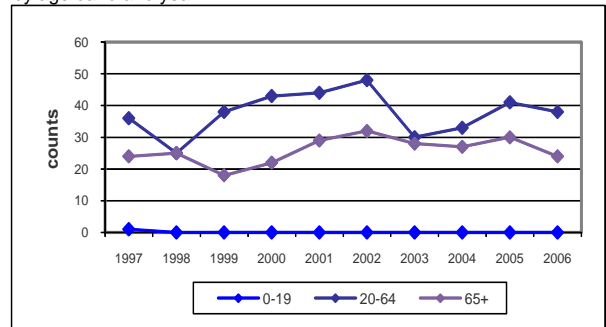
Age standardised incidence rates (ASR) with confidence limits, number of new cases and the crude rate (per 100, 000 population) for female breast cancer in Guernsey, Jersey and South West England.

	Guernsey			Jersey			South West		
	2004	2005	2006	2004	2005	2006	2004	2005	2006
ASR	172.2	123.7	131.4	106.0	128.0	108.3	134.8	136.0	132.6
±(2se)	44.3	37.6	39.2	28.4	31.3	28.5	4.2	4.2	4.1
New cases	66	46	46	60	71	61	4606	4703	4631
Crude Rate	216.1	150.6	148.4	133.3	157.4	134.9	178.7	180.9	176.9

New cases registered with female breast cancer in Guernsey by age band and year.



New cases registered with female breast cancer in Jersey by age band and year.



Number of new cases and incidence rate (per 100, 000 population) for female breast cancer in Guernsey, Jersey and South West England in 2006 by age band.

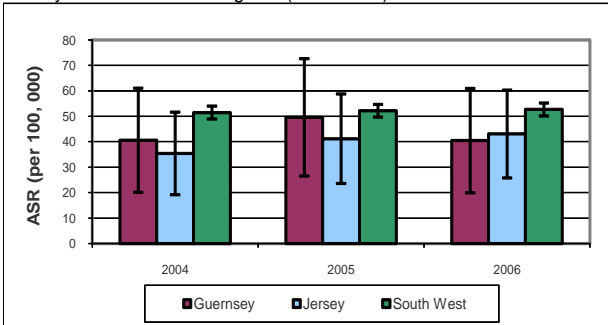
	Guernsey			Jersey			South West		
	0-19	20-64	65+	0-19	20-64	65+	0-19	20-64	65+
New cases	0	27	19	0	38	23	0	2420	2211
Crude Rate	0.0	142.0	347.6	0.0	135.6	302.8	0.0	161.7	406.7

\* There were two male registrations in Guernsey and one male registration in Jersey in the period 2004 - 2006.

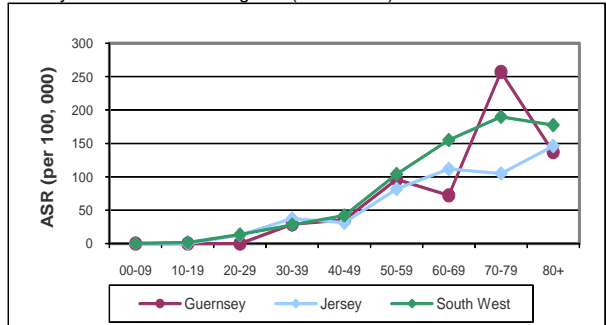


## Gynaecological cancer (C51–C58)

Age standardised incidence rates for Guernsey, Jersey and South West England (2004-2006)



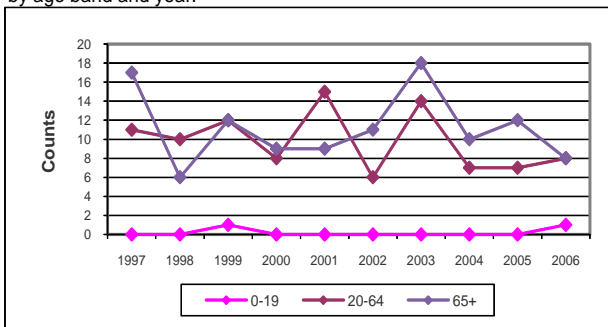
Age specific incidence rates for Guernsey, Jersey and South West England (2004-2006)



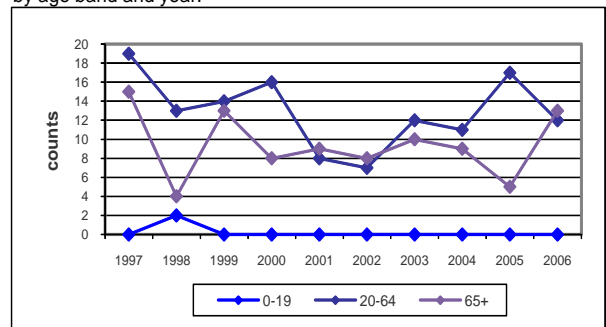
Age standardised incidence rates (ASR) with confidence limits, number of new cases and the crude rate (per 100, 000 population) for gynaecological cancer in Guernsey, Jersey and South West England.

	Guernsey			Jersey			South West		
	2004	2005	2006	2004	2005	2006	2004	2005	2006
ASR	40.6	49.6	40.4	35.4	41.2	43.0	51.5	52.2	52.7
±(2se)	20.9	23.5	21.0	16.5	18.0	17.6	2.6	2.6	2.6
New cases	17	19	16	20	22	25	1804	1866	1883
Crude Rate	55.7	62.2	51.6	44.4	48.8	55.3	70.0	71.8	71.9

New cases registered with gynaecological cancer in Guernsey by age band and year.



New cases registered with gynaecological cancer in Jersey by age band and year.

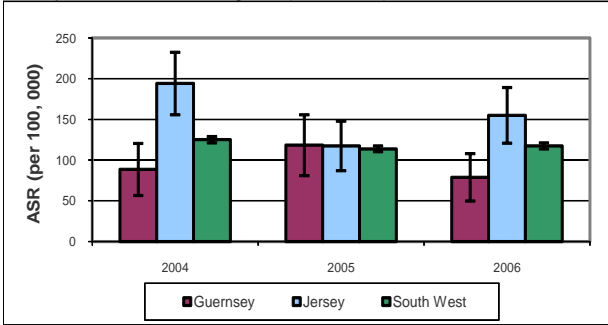


Number of new cases and incidence rate (per 100, 000 population) for gynaecological cancer in Guernsey, Jersey and South West England in 2006 by age band.

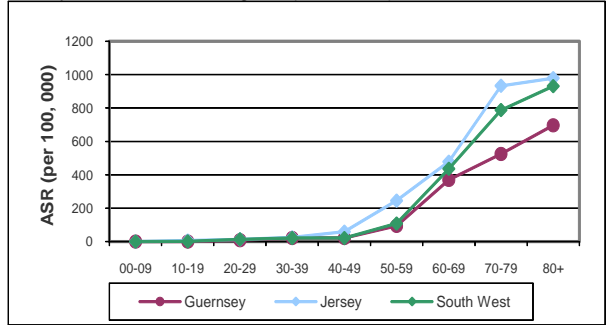
	Guernsey			Jersey			South West		
	0-19	20-64	65+	0-19	20-64	65+	0-19	20-64	65+
New cases	0	8	8	0	12	13	8	895	980
Crude Rate	0.0	42.1	146.3	0.0	42.8	171.1	1.4	59.8	180.3

## Male genital cancer (C60–C63)

Age standardised incidence rates for Guernsey, Jersey and South West England (2004-2006)



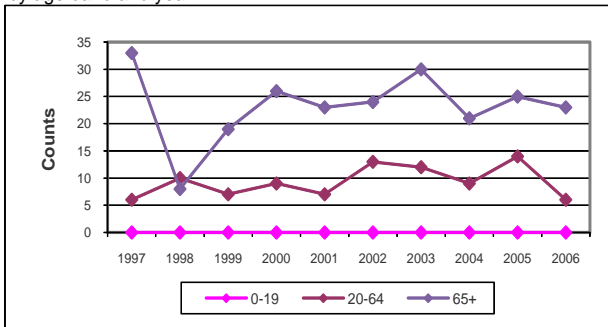
Age specific incidence rates for Guernsey, Jersey and South West England (2004-2006)



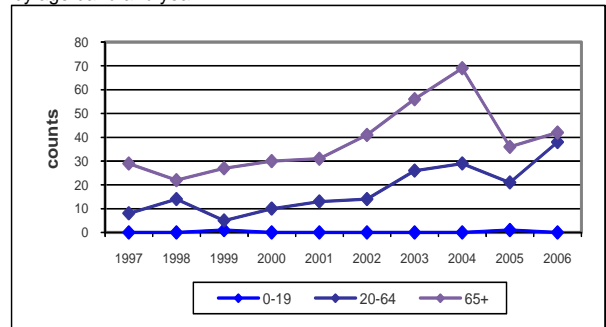
Age standardised incidence rates (ASR) with confidence limits, number of new cases and the crude rate (per 100, 000 population) for male genital cancer in Guernsey, Jersey and South West England.

	Guernsey			Jersey			South West		
	2004	2005	2006	2004	2005	2006	2004	2005	2006
ASR	88.6	118.3	78.9	194.1	117.3	155.1	125.1	113.8	117.4
±(2se)	32.6	38.1	29.6	39.3	31.1	34.9	3.9	3.7	3.7
New cases	30	39	29	98	58	80	4314	3986	4151
Crude Rate	100.5	130.7	96.6	228.4	134.8	185.6	175.1	160.3	165.7

New cases registered with male genital cancer in Guernsey by age band and year.



New cases registered with male genital cancer in Jersey by age band and year.

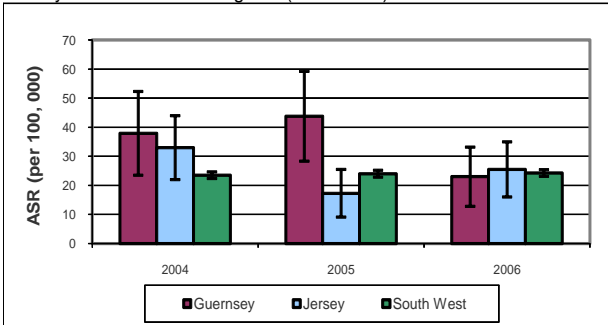


Number of new cases and incidence rate (per 100, 000 population) for male genital cancer in Guernsey, Jersey and South West England in 2006 by age band.

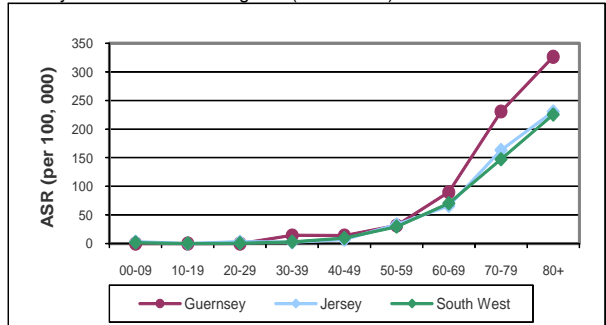
	Guernsey			Jersey			South West		
	0-19	20-64	65+	0-19	20-64	65+	0-19	20-64	65+
New cases	0	6	23	0	38	42	10	1091	3050
Crude Rate	0.0	31.5	560.5	0.0	140.3	699.4	1.6	73.8	733.3

## Urological cancer (C64–C68)

Age standardised incidence rates for Guernsey, Jersey and South West England (2004-2006)



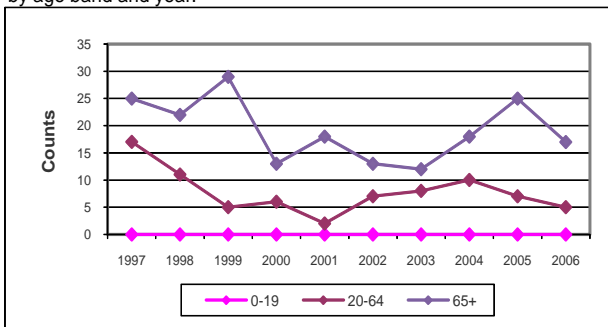
Age specific incidence rates for Guernsey, Jersey and South West England (2004-2006)



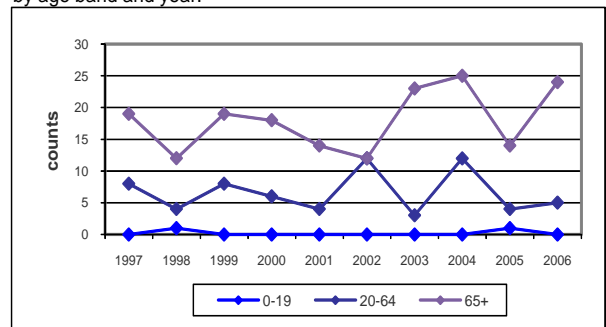
Age standardised incidence rates (ASR) with confidence limits, number of new cases and the crude rate (per 100, 000 population) for urological cancer in Guernsey, Jersey and South West England.

	Guernsey			Jersey			South West		
	2004	2005	2006	2004	2005	2006	2004	2005	2006
ASR	37.9	43.7	23.0	33.0	17.3	25.5	23.5	24.0	24.3
±(2se)	14.7	15.8	10.4	11.2	8.3	9.7	1.2	1.2	1.2
New cases	28	32	22	37	19	29	1756	1810	1856
Crude Rate	46.4	53.0	36.0	42.1	21.6	32.8	34.8	35.6	36.2

New cases registered with urological cancer in Guernsey by age band and year.



New cases registered with urological cancer in Jersey by age band and year.



Number of new cases and incidence rate (per 100, 000 population) for urological cancer in Guernsey, Jersey and South West England in 2006 by age band.

	Guernsey			Jersey			South West		
	0-19	20-64	65+	0-19	20-64	65+	0-19	20-64	65+
New cases	0	5	17	0	5	24	7	474	1375
Crude Rate	0.0	13.1	177.6	0.0	9.1	176.5	0.6	15.9	143.3

## Other sites 2006

Cancer Site	Guernsey				Jersey				South West			
	Count	ASR	(±2 se)	Crude Rate	Count	ASR	(±2 se)	Crude Rate	Count	ASR	(±2 se)	Crude Rate
Oesophagus (C15)	10	12.7	8.4	16.4	15	13.8	7.2	17.0	809	10.4	0.8	15.8
Stomach (C16)	5	6.0	5.6	8.2	22	18.7	8.2	24.9	590	7.3	0.6	11.5
Colon (C18)	22	30.0	13.1	36.0	49	40.4	12.0	55.5	2423	29.2	1.3	47.3
Rectum (C20)	7	9.1	7.1	11.5	16	14.6	7.4	18.1	1023	13.5	0.9	20.0
Pancreas (C25)	3	3.0	3.8	4.9	10	8.3	5.4	11.3	793	9.6	0.7	15.5
Other Skin (C44)	181	240.2	36.8	296.6	281	247.8	30.2	318.1	12910	167.2	3.1	251.9
Cervix (C53)	3	9.1	10.6	9.7	2	3.9	5.5	4.4	254	8.9	1.2	9.7
Corpus Uteri (C54)	2	5.3	7.8	6.5	4	6.7	6.8	8.8	711	19.6	1.6	27.2
Ovary (C56)	7	18.7	14.3	22.6	18	30.6	14.8	39.8	724	19.5	1.6	27.6
Prostate (C61)	26	69.2	27.5	86.6	70	135.4	32.6	162.4	3882	106.8	3.5	154.9
Testis (C62)	2	6.3	8.9	6.7	9	17.5	11.8	20.9	211	8.9	1.2	8.4
Kidney (C64)	4	4.4	4.7	6.6	10	9.5	6.1	11.3	745	10.5	0.8	14.5
Bladder (C67)	18	18.6	9.3	29.5	19	16.0	7.6	21.5	987	12.2	0.8	19.3
Brain (C71)	4	5.8	5.8	6.6	7	6.5	5.1	7.9	437	7.1	0.7	8.5
Lymphoma (C81-C85, C96)	15	19.3	10.5	24.6	18	17.0	8.2	20.4	1355	19.3	1.1	26.1
Leukaemia (C91-C95)	6	5.5	4.8	9.8	9	7.6	5.2	10.2	862	11.7	0.9	16.8

# Mortality

## Mortality – Unknown Causes of Death

The table below shows the number of diagnosed cancers that have a missing cause of death. If a patient had more than one cancer, the most recently diagnosed cancer was used as 'Cancer Site of Diagnosis' in the tables below.

Cancer Site of Diagnosis	Sex	Guernsey			Jersey		
		2004	2005	2006	2004	2005	2006
All Malignancies (exc. C44)	F	3	5	8	43	5	
	M	6	8	5	40	3	2
Head and Neck (C00-C14,C30-C32, C73)	F		1	1	4	2	
	M				2		
Upper Gastro-intestinal (C15,C16,C25)	F	1		1			
	M		1	1	3		
Colorectal (C18-C21)	F			2	8		
	M	1	2	1	6		
Lung (C33,C34)	F		1	1	4		
	M	1	2	1	8	1	1
Malignant Melanoma (C43)	F		1				
	M		1				
Other Skin (C44)	F	5	7		13		
	M	1	2	2	15	1	
Breast (C50)	F	1		1	7	2	
	M						
Gynae/Genital (C51-C58)/(C60-C63)	F				9	1	
	M	1		2	7	1	
Urological (C64-C68)	F		1		4		
	M	2	1		8		
Blood/Lymph (C81-C96)	F	1		2	1		
	M				3		

## Mortality – unknown causes of death by 5-year age band in 2004-2006

	All malignancies (excl. C44)	Head & Neck (C00-C14, C30-C32, C73)	Upper Gastro-intestinal (C15, C16, C25)	Colorectal (C18-C21)	Lung (C33, C34)	Malignant Melanoma (C43)	Other Skin (C44)	Breast (C50)	Gynae/Genital (C51-C58)/(C60-C63)	Urological (C64-C68)	Blood/lymph (C81-C96)
Guernsey											
00-04											
05-09											
10-14											
15-19											
20-24											
25-29											
30-34											
35-39											
40-44											
45-49											
50-54	2				1			1			
55-59	4	1		1							
60-64	3		1	1	1						
65-69	1		1								
70-74	2	1					1		1		
75-79	3				2		1			1	
80-84	8		1		1	1	3	1	1	2	1
85+	12		1	4	1	1	12		1	1	2
Total	35	2	4	6	6	2	17	2	3	4	3
Jersey											
00-04											
05-09											
10-14											
15-19	1										
20-24											
25-29											
30-34											
35-39	1								1		
40-44											
45-49	1								1		
50-54	4	2		1					1		
55-59	5				1			3			
60-64	7	2		1	2						1
65-69	7				1		1		2	2	
70-74	11	1	2		3		1		2	1	1
75-79	13	1	1	2	3		7	3	3		
80-84	20	1		5	3		6	1	2	4	1
85+	23	1		5	1		14	2	6	5	1
Total	93	8	3	14	14	0	29	9	18	12	4

## Mortality – known causes of cancer death

Age-specific rates for the South West were applied to each of the Channel Island populations in order to calculate expected mortality counts for each cause of cancer death.

The 95% lower and upper confidence interval limits (LCI and UCI) of the average observed count for each cause of death define the average range and can be compared to the expected counts.

Cause of Death	Sex	Guernsey			Average Range		Expected Counts
		2004	2005	2006	LCI	UCI	Guernsey
All Malignancies (exc. C44)	F	86	76	58	57	92	66
	M	73	86	54	55	90	72
Head and Neck (C00-C14,C30-C32, C73)	F	1	1	1	0	6	1
	M	4	2	1	0	7	2
Upper Gastro-intestinal (C15,C16,C25)	F	14	11	5	5	18	8
	M	16	11	5	5	20	11
Colorectal (C18-C21)	F	10	6	7	3	16	7
	M	9	7	10	4	17	8
Lung (C33,C34)	F	13	13	15	8	23	10
	M	18	20	13	10	27	15
Malignant Melanoma (C43)	F			3	0	6	1
	M	1	1		0	6	1
Other Skin (C44)	F	1	1		0	6	0
	M	1			0	3	0
Breast (C50)	F	9	16	8	5	20	12
	M				0	3	0
Gynae/Genital (C51-C58)/(C60-C63)	F	18	7	5	5	18	7
	M	5	15	10	5	18	10
Urological (C64-C68)	F	5	4	1	1	9	3
	M	6	5	5	2	12	5
Blood/Lymph (C81-C96)	F	3	6	3	1	10	5
	M	5	10	5	3	14	7

Cause of Death	Sex	Jersey			Average Range		Expected Counts
		2004	2005	2006	LCI	UCI	Jersey
All Malignancies (exc. C44)	F	68	93	108	72	111	95
	M	60	112	124	80	121	104
Head and Neck (C00-C14,C30-C32, C73)	F		2		0	6	1
	M	2	6	5	1	10	2
Upper Gastro-intestinal (C15,C16,C25)	F	10	8	14	5	20	11
	M	5	16	19	7	22	16
Colorectal (C18-C21)	F	5	10	9	3	16	10
	M	9	11	10	5	18	11
Lung (C33,C34)	F	14	17	26	11	30	14
	M	15	28	34	17	38	22
Malignant Melanoma (C43)	F	3	2	1	0	7	2
	M		3	4	0	7	2
Other Skin (C44)	F		1		0	3	0
	M	1			0	3	0
Breast (C50)	F	14	21	15	10	27	17
	M				0	3	0
Gynae/Genital (C51-C58)/(C60-C63)	F	4	8	11	3	16	11
	M	10	14	15	7	22	15
Urological (C64-C68)	F	4	6	6	2	12	4
	M	4	10	11	3	16	7
Blood/Lymph (C81-C96)	F	5	6	8	2	13	7
	M	7	6	9	3	14	9

## Mortality – known causes of cancer death by 5 year age band in 2004-2006

	All malignancies (excl. C44)	Head & Neck (C00-C14, C30-C32, C73)	Upper Gastro-intestinal (C15, C16, C25)	Colorectal (C18-C21)	Lung (C33, C34)	Malignant Melanoma (C43)	Other Skin (C44)	Breast (C50)	Gynae/Genital (C51-C58)/(C60-C63)	Urological (C64-C68)	Blood/Lymph (C81-C96)
<b>Guernsey</b>											
00-04											
05-09											
10-14	1										1
15-19											
20-24											
25-29											
30-34	2										
35-39	2									1	
40-44	6		1					1			1
45-49	6				1			3	2		
50-54	12	2	1	1	3			2	2		
55-59	25		4	5	7			2	3		1
60-64	32	3	5	3	9	1	1	2	2	1	3
65-69	45	1	7	5	8			1	7	3	2
70-74	63	2	8	8	11	3		4	10	5	4
75-79	91	1	12	7	27			9	16	3	7
80-84	65		9	4	18			2	11	7	7
85+	83	1	15	16	8	1	2	7	7	6	6
<b>Total</b>	<b>433</b>	<b>10</b>	<b>62</b>	<b>49</b>	<b>92</b>	<b>5</b>	<b>3</b>	<b>33</b>	<b>60</b>	<b>26</b>	<b>32</b>
<b>Jersey</b>											
00-04											
05-09											
10-14											
15-19											
20-24	1										
25-29	1										
30-34	1							1			
35-39	8		2	1	1				1		
40-44	1							1			
45-49	12	1		1	3	1		4	1		
50-54	28	3	1	4	6			4		2	1
55-59	44	5	5	2	6	1		6	2	1	4
60-64	55	1	12	2	16	2		5	4	3	5
65-69	64	1	8	6	22	1		2	5	4	4
70-74	71	2	11	6	20	3		3	11	4	4
75-79	73	1	10	8	17			4	8	6	6
80-84	106	1	11	14	22	2	2	11	15	7	12
85+	100		12	10	21	3		9	15	14	5
<b>Total</b>	<b>565</b>	<b>15</b>	<b>72</b>	<b>54</b>	<b>134</b>	<b>13</b>	<b>2</b>	<b>50</b>	<b>62</b>	<b>41</b>	<b>41</b>



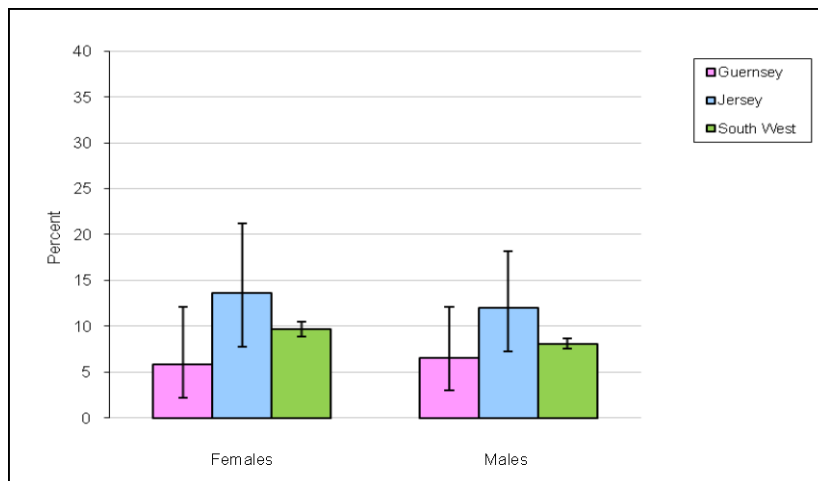
# Survival

## Relative survival

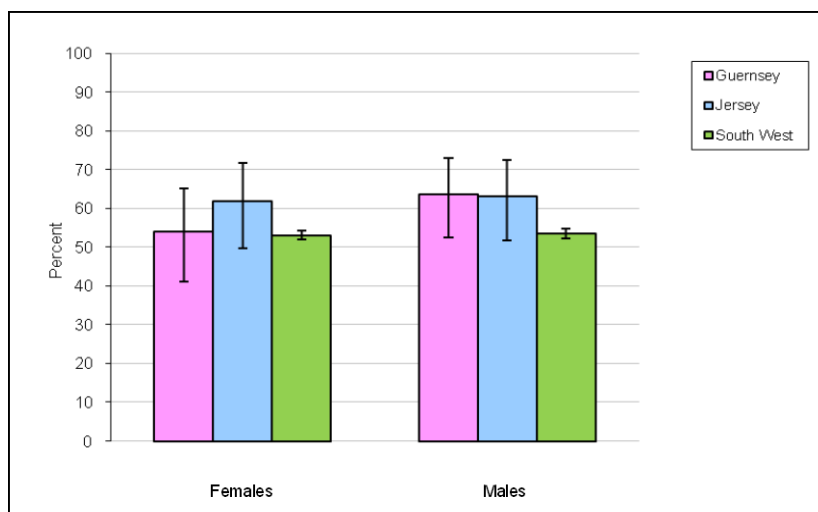
The survival figures reported represent 5 year relative survival (follow up between 2002 and 2007) calculated using period analysis. Relative survival is the ratio of the observed survival rate in a group of cancer patients to the expected survival rate in a similar group of people from the general population, where they have been matched by age and sex.

Period analysis was used in order to give a more up to date estimate of long term survival. Date of death has been recorded to the end of 2007. Therefore in order to calculate 5 year relative survival using 5 years of data, data for cancer patients diagnosed between 1998 and 2002 (most recent 5 years available where every patient had a chance of surviving 5 years) were used to estimate 5 year relative survival for cancer patients diagnosed between 2002 and 2006.

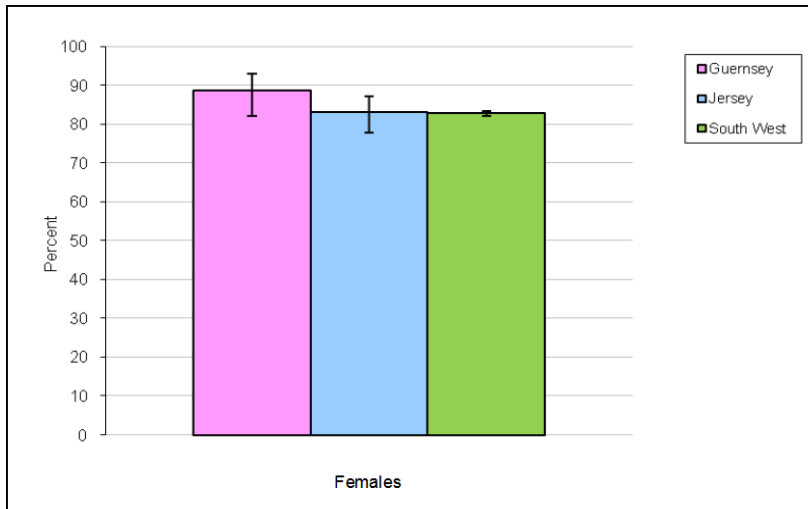
## Lung cancer (C33 and C34) relative survival



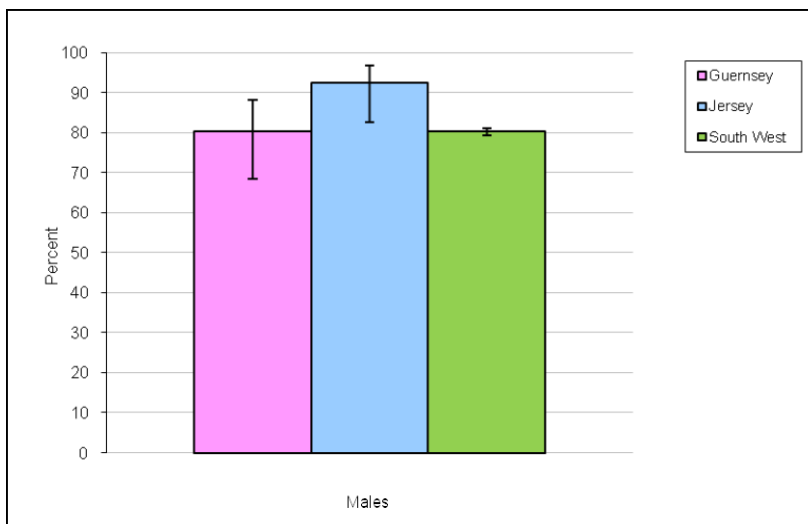
## Colorectal cancer (C18-C21) relative survival



## Female breast cancer (C50) relative survival



## Prostate cancer (C61) relative survival



## Data quality 2006

SWCIS measures registry performance and data quality by a standard set of agreed criteria developed by the UK Association of Cancer Registries (UKACR). This enables registries to compare performance and data quality. A modified set of the criteria is presented below to enable the quality of the Channel Islands' Cancer Registry Dataset to be measured.

DATA ITEM	DATABASE CHECK (%)		
	Blank	Valid unknown	Valid known
Postcode*	0	6.2	93.8
Sex	0	0	100
Date of Birth	0	0	100
Anniversary (diagnosis) date	0	0	100
Site of primary growth\$	0	0.5	99.5
Morphology#	0	5.4	94.6
Behaviour of growth	0	0	100
Basis of diagnosis	0	0	100

- \* Some pseudo-postcodes used
- # ICD-10 morphology codes M8000 and M8010 without pathological verification have been classed as unknown
- \$ ICD-10 code C80 counted as unknown
- Improvement on 2005

STATISTIC	VALUE									
	Lung	Breast Invasive	Breast <i>in situ</i>	Cervix Invasive	Cervix <i>in situ</i>	Melanoma	Colorectal	Prostate	All invasive (excl non-melanoma skin)	
									F	M
% with pathological verification	74	98	97	80	100	97	85	90	84	81
% staged	16	83	43	80	96	77	72	68	48	43
% with recorded treatment	Surgery	44	90	94	100	100	89	89	86	82
	Radiotherapy	30	22	12	0	0	9	0	15	12
	Chemotherapy	33	20	0	0	0	14	0	15	15

- Improvement on 2005

Lung and cervix invasive cancers do not meet the UKACR standard of 85% for pathological verification.

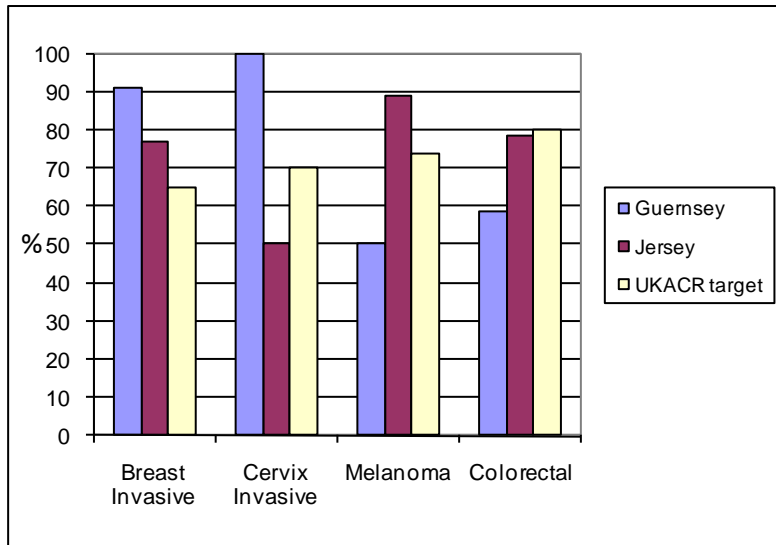
Staging standards have been updated by the 2004 NHS Manual for Cancer Services (available from [www.cquins.nhs.uk](http://www.cquins.nhs.uk)). Currently they are met in two of the four key sites, breast invasive and cervix invasive, for the Channel Islands as a whole. Graphs for Guernsey and Jersey separately are shown below.

The proportion having each type of treatment is the proportion of people with treatment recorded.

The low proportion of radiotherapy and chemotherapy data reflects the difficulty of collecting data for these treatments.

## Completeness of staging 2006

Completeness of staging data for Guernsey and Jersey separately.

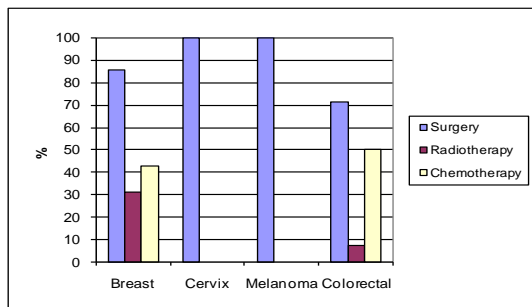


Does not include carcinoma *in-situ* for breast or cervix.

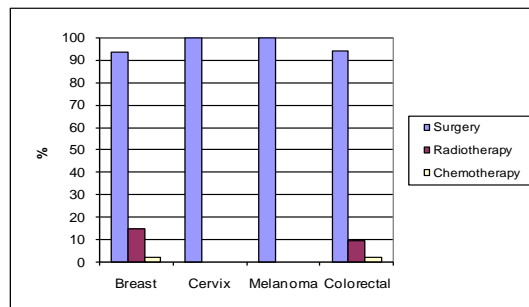
## Completeness of treatment recorded

Percentage of treatments of each type for four key cancer sites, for people registered in 2006 with one or more treatments recorded.

### Guernsey



### Jersey



Does not include carcinoma *in-situ* for breast or cervix.

## Location of treatment in 2006

The total number of patients with a record of treatment in 2006 is shown below. 'Other' indicates treatment at a known hospital not on the island of residence. Data capture for radiotherapy and chemotherapy is incomplete.

Cancer Site	Surgery		Radiotherapy		Chemotherapy	
	Guernsey	Other	Guernsey	Other	Guernsey	Other
Bladder (C67)	11	1	0	0	1	0
Brain and CNS (C70-C72)	0	1	0	1	0	0
Breast (C50)	30	0	0	11	15	0
Colorectal (C18-C21)	10	0	0	1	8	0
Gynaecological (C51-C58)	5	4	0	0	3	0
Haematological (C88,C90)	0	0	0	0	0	0
Head & Neck (C00-C14, C30-C32, C73)	4	1	0	1	0	0
Hepatobiliary (C22-C24)	1	0	0	0	0	0
Kidney and Ureter (C64-C66)	0	1	0	0	0	0
Lung (C33, C34)	0	4	0	0	9	0
Lymphoma (C81-C85, C96)	0	0	0	3	5	1
Male Genital (C60-C63)	7	2	0	0	0	0
Malignant Melanoma (C43)	5	1	0	0	0	0
Other Skin (C44)	60	4	0	1	0	0
Upper Gastrointestinal (C15, C16, C25)	1	0	0	0	5	1

Cancer Site	Surgery		Radiotherapy		Chemotherapy	
	Jersey	Other	Jersey	Other	Jersey	Other
Bladder (C67)	12	1	0	0	0	0
Brain and CNS (C70-C72)	0	2	0	1	0	0
Breast (C50)	45	0	0	7	1	0
Colorectal (C18-C21)	37	12	0	5	1	0
Gynaecological (C51-C58)	14	0	0	0	0	0
Haematological (C88,C90)	0	0	0	0	0	0
Head & Neck (C00-C14, C30-C32, C73)	13	5	0	6	0	0
Hepatobiliary (C22-C24)	0	0	0	0	0	0
Kidney and Ureter (C64-C66)	3	2	0	0	0	0
Lung (C33, C34)	1	7	0	8	0	0
Lymphoma (C81-C85, C96)	0	0	0	1	0	0
Male Genital (C60-C63)	10	2	0	0	0	0
Malignant Melanoma (C43)	25	1	0	0	0	0
Other Skin (C44)	232	0	0	0	0	0
Upper Gastrointestinal (C15, C16, C25)	1	10	0	1	0	0

## Completeness of histology 2006

The histology of the main cancer sites has been grouped into similar cell types to indicate the completeness of the histology coding. 'NOS' is an abbreviation for 'Not Otherwise Specified'. 'Other' indicates other specified cell types. ICD10 codes with morphology codes between M8000 and M8010 without pathological verification are classed as 'Unknown'.

<b>Bladder (C67)</b>	<b>Guern.</b>	<b>Jer.</b>
Transitional cell carcinoma, NOS	13	8
Papillary transitional cell carcinoma	2	6
Other	1	
Unknown	2	4

<b>Brain and CNS (C70-C72)</b>	<b>Guern.</b>	<b>Jer.</b>
Glioblastoma, NOS	1	3
Other	3	2
Unknown		2

<b>Breast (C50)</b>	<b>Guern.</b>	<b>Jer.</b>
Ductal carcinoma	38	21
carcinoma, NOS		14
Lobular carcinoma, NOS	7	11
Other	2	12
Unknown		2

<b>Cervix uteri (C53)</b>	<b>Guern.</b>	<b>Jer.</b>
Squamous cell carcinoma	2	2
Other	1	
Unknown		

<b>Colorectal (C18-C21)</b>	<b>Guern.</b>	<b>Jer.</b>
Adenocarcinoma	24	54
Other	2	6
Unknown	3	8

<b>Gynaecological (C51-C58)</b>	<b>Guern.</b>	<b>Jer.</b>
Adenocarcinoma, NOS	1	
Endometrioid carcinoma	1	4
Other	4	1
Unknown		

<b>Head &amp; Neck (C00-C14, C30-C32, C73)</b>	<b>Guern.</b>	<b>Jer.</b>
Squamous cell carcinoma, NOS	7	21
Squamous cell carcinoma, keratinizing type, NOS		8
Other	4	3
Unknown		2

<b>Kidney and Ureter (C64-C66)</b>	<b>Guern.</b>	<b>Jer.</b>
Renal cell carcinoma	2	6
Other	1	1
Unknown	1	

<b>Lung (C33, C34)</b>	<b>Guern.</b>	<b>Jer.</b>
Small cell carcinoma, NOS	6	7
Squamous cell carcinoma, NOS	6	15
Adenocarcinoma, NOS	8	8
Large cell carcinoma, NOS	2	
Non small cell carcinoma	5	22
Other	2	5
Unknown	2	11

<b>Malignant Melanoma (C43)</b>	<b>Guern.</b>	<b>Jer.</b>
Nodular melanoma	1	3
Superficial spreading melanoma	2	7
Melanoma, NOS	9	17
Other		1
Unknown		

<b>Other Skin (C44)</b>	<b>Guern.</b>	<b>Jer.</b>
Basal cell carcinoma, NOS	140	215
Squamous cell carcinoma, NOS	38	52
Other	2	11
Unknown	1	3

<b>Ovarian (C56)</b>	<b>Guern.</b>	<b>Jer.</b>
Adenocarcinoma, NOS	1	1
Other	4	14
Unknown	2	3

<b>Prostate (C61)</b>	<b>Guern.</b>	<b>Jer.</b>
Adenocarcinoma, NOS	22	21
Other		43
Unknown	4	6

<b>Testicular (C62)</b>	<b>Guern.</b>	<b>Jer.</b>
Seminoma, NOS	2	4
Other		5
Unknown		

<b>Upper Gastrointestinal (C15, C16, C25)</b>	<b>Guern.</b>	<b>Jer.</b>
Adenocarcinoma, NOS	8	22
Squamous cell carcinoma, NOS	5	8
Other	2	11
Unknown	3	6

## Populations 2004–2006

Populations are estimates provided by the Channel Islands. No estimates were available from Guernsey for 2005, so 2004 estimated populations have been used.

Guernsey						
	Male			Female		
	2004	2005	2006	2004	2005	2006
00-04	1470	1470	1502	1400	1400	1418
05-09	1622	1622	1657	1497	1497	1518
10-14	1822	1822	1842	1839	1839	1864
15-19	1841	1841	1861	1692	1692	1714
20-24	1920	1920	1895	1898	1898	1878
25-29	2126	2126	2098	2025	2025	2005
30-34	2241	2241	2126	2351	2351	2313
35-39	2439	2439	2314	2305	2305	2267
40-44	2399	2399	2437	2476	2476	2570
45-49	2278	2278	2314	2163	2163	2246
50-54	2447	2447	2505	2424	2424	2473
55-59	1757	1757	1800	1712	1712	1747
60-64	1532	1532	1579	1458	1458	1516
65-69	1242	1242	1280	1294	1294	1346
70-74	1028	1028	1062	1250	1250	1259
75-79	796	796	822	1079	1079	1088
80-84	570	570	536	1031	1031	873
85+	311	311	404	647	647	901
Total	29841	29841	30034	30541	30541	30995

Jersey						
	Male			Female		
	2004	2005	2006	2004	2005	2006
00-04	2372	2432	2421	2350	2390	2409
05-09	2503	2419	2377	2327	2308	2287
10-14	2633	2616	2617	2503	2417	2388
15-19	2516	2561	2607	2319	2442	2538
20-24	2367	2352	2357	2422	2294	2219
25-29	2552	2489	2419	2810	2762	2718
30-34	3196	3006	2855	3405	3235	3063
35-39	3819	3744	3627	3937	3883	3779
40-44	3787	3881	3934	3841	3942	4024
45-49	3309	3407	3531	3454	3509	3572
50-54	3007	3012	2999	3052	3112	3155
55-59	2908	3005	2999	2969	3041	3011
60-64	2168	2199	2362	2242	2275	2475
65-69	2008	2005	1994	2042	2077	2088
70-74	1478	1550	1609	1685	1706	1756
75-79	1116	1116	1115	1403	1449	1457
80-84	715	763	814	1132	1105	1098
85+	451	464	474	1135	1175	1197
Total	42904	43021	43111	45028	45121	45235