

# Consultation document

# CHILDREN AND YOUNG PEOPLE

## A strategic framework for Jersey 2011

December 2010

NOTE: a summary of this strategic framework is available for consultation purposes. If you would like a copy of the summary or a copy of the Youth Justice Options Paper which supports this framework, please:

- visit [www.gov.je/consultations](http://www.gov.je/consultations)
- call 442285
- email [childrensplan@health.gov.je](mailto:childrensplan@health.gov.je).

**Purpose of consultation**

To ask children and young people, parents, members of the public and professionals whether the proposed Strategic Framework accurately reflects what needs to be done to ensure that all children and young people in Jersey reach their full potential and lead happy, healthy lives.

**Closing date of consultation:** 15 February 2011

**How to respond to the consultation**

To respond please complete a copy of the consultation questionnaire which can be found on page 68 of this document. Please send your completed questionnaire by post or email to:

Children and Young People's Strategic Framework  
Health and Social Services Department  
4<sup>th</sup> Floor, Peter Crill House  
Gloucester Street  
St Helier  
JE1 3QS

Email: [childrensplan@health.gov.je](mailto:childrensplan@health.gov.je).

**What happens after the consultation is finished**

The Children's Policy Group will consider all the responses that are submitted. The Strategic Framework will then be updated and presented to the States for consideration. This will be in Spring/Summer 2011.

A summary of the consultation responses will be made available from [www.gov.je/consultations](http://www.gov.je/consultations)

Once the Strategic Framework has been adopted, implementation schedules will be developed outlining the activities and services to be delivered in order to achieve the vision and outcomes established in the Strategic Framework.

**This consultation paper has been sent to the following individuals / organisations:**

Scrutiny Office  
States Members  
States Departments  
ACET  
Air Training Corps  
Ace of Clubs  
Army Cadet Force League  
Autism Jersey  
BaSS  
Boys Brigade  
Brig-y-don  
Bridge  
Brighter Futures  
Brook  
Causeway Association  
Centre Point Trust  
Communicare  
Crimestoppers  
Duke of Edinburgh Awards  
Eating Disorders Support Group  
Early Years Network  
Family Mediation Service  
Family Nursing and Home Care

Girl Guiding Association  
Headway Brain Injury Association  
Hearing Resource Centre  
Help a Jersey Child  
Jersey Association of Youth and Friendship  
Jersey Asthma Society  
Jersey Blind Society  
Jersey Child Care Trust  
Jersey Child Protection Committee  
Jersey Dyslexia Association  
Jersey Employment Trust  
Jersey Epilepsy Association  
Jersey Fostercarers Association  
Jersey Friends of Anthony Nolan Trust  
Jersey Haemophilia Group  
Jersey Mencap  
Jersey Society for Deaf Children and Young Adults  
Jersey Sports Association for the Disabled

Jersey Women's Refuge  
Jersey Youth Trust  
Les Amis  
Lions Club of Jersey  
Milli's Child Contact Centre  
NSPCC  
National Autistic Society  
National Childbirth Trust  
Sundee Watts Memorial Fund  
St. John Ambulance  
Scope  
The Jersey Domestic Violence Forum  
The Shelter Trust  
Tommy's - the baby charity  
Variety Club  
Victim Support Jersey  
Portuguese Consul  
Polish Consul  
Prison Me No Way  
Prince's Trust  
Sea Cadet Corps  
Scout Association  
Self advocacy Jersey

# Contents

---

<b><u>Foreword to consultation</u></b>	4
<b><u>Section 1: Introduction</u></b>	
Jersey context	6
Why have a strategic framework for children and young people?	8
How is it being developed?	11
Our vision, outcomes and principles	12
<b><u>Section 2: Achieving the outcomes</u></b>	
Be healthy	14
Be safe	23
Achieve	29
Grow in a stimulating, nurturing environment	35
Be responsible and respected	44
Have a voice and be heard	49
Move confidently into adulthood	53
<b><u>Section 3: Making it happen</u></b>	
Planning services	60
Governance, commissioning, monitoring	62
<b><u>Glossary</u></b>	66
<b><u>Consultation questionnaire</u></b>	68

# Foreword to consultation

---

The Children's Policy Group want Jersey to be a great place to live, somewhere all children and young people have the best possible opportunities in life. That is why we are creating a Children and Young People's Strategic Framework. It will set out what we must do to ensure that all children and young people - including those who face disadvantage or disability - reach their full potential and lead happy, healthy lives.

This consultation document is designed to establish an overall outline of what that Strategic Framework should be. It is a starting point, defining the vision, development focus and principles. Once this framework is agreed fully costed implementation plans will be developed by the Children's Policy Group.

The implementation plans will outline in detail, who will do what, when and how. This will include, where necessary, the redesign of policies, services, budgets and working practices to improve opportunities for our children and young people without increasing the burden on existing and future taxpayers.

We hope to achieve this within the resources approved for the coming years by making better informed, collective decisions about the services we provide and re-directing funding if required. The Strategic Framework proposes the establishment of a decision making, commissioning and delivery structure that will lead this work. The structure will work across the boundaries of States Departments and include external agencies and service providers as equal partners. It will promote a new culture of joint working and commissioning which is essential if we are to deliver effective, affordable seamless services that follow children on their journey into adulthood.

This document describes a framework around which services can be developed. It does not set out a detailed account of what we are going to do or how, but instead aims to identify key issues and set out what we want to achieve and why.

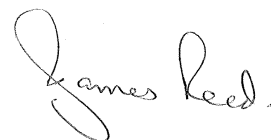

The Strategic Framework has not been produced in isolation. Children, young people, parents, teachers, social workers, health care and charity professionals have already helped shape it. We would now like more input to ensure that it meets the needs of all children and young people.

Are the outcomes and development focus correct? Are there any omissions? Do you support the principles? How can we ensure that investment in early intervention really can make a difference? Should our youth justice system focus on the needs of children, rather than on their deeds? Should we create joint decision making structures?

We are determined to work together to improve outcomes for all the Island's children and young people and with your help we believe that this Strategic Framework can help us achieve that goal.

Thank you to everyone who has been involved in developing this consultation document and to everyone who will be involved over the coming years to help us deliver a bright future for all Jersey's children and young people.

## Children's Policy Group



**Deputy Anne Pryke**  
Minister, Health & Social Services

**Senator Ian Le Marquand,**  
Minister, Home Affairs

**Deputy James Reed**  
Minister, Education, Sports & Culture

# **Section 1: Introduction**

# Jersey context

---

Jersey is a small Island, 9 miles by 5 miles. It is outstandingly beautiful and both culturally and administratively unique.

Jersey is a Crown Dependency and has considerable autonomy from the UK. It has its own government, the States of Jersey, and its own administrative, financial and legal systems, including its own courts of law. Yet it is not completely independent, it is both defended and represented on an international level by the UK Government.

The States of Jersey has 53 elected members. As well as debating and passing laws they take executive decisions determining policy and approving annual public expenditure.

The Island is divided geographically into 12 Parishes that deliver a range of functions evolved through hundreds of years of customary practice, including an Honorary Police system and a community-based alternative to formal court proceedings known as the Parish Hall Enquiry.

## The population

The Island's permanent population is approximately 91,800, with around 700,000 visitors a year. This is a relatively small population comparable in size, although not in demographics, to UK towns such as Basingstoke (90,170) or Lincoln (85,970). Whilst our population is small it is, however, dense with approximately 800 people per square kilometre compared to the UK's 250 or the Isle of Man's 140. This creates pressures on how we use our land which in turn impacts on the cost and availability of housing and recreational space.

In common with many other countries the population balance between older and younger people is changing. At present we have approximately 16,500 under 16 year olds. As a percentage of the population this is declining year-on-year despite an increasing birth rate and the inward migration of families. At the same time the numbers aged 65 and over is increasing. Population projections suggest that we already have the same population of under 15 year olds as we do over 65 year olds (17% each). As our population continues to age, more resources will inevitably be directed towards services for older people, whilst the proportion of people working and paying taxes to fund public services will decline.

The Island's farming, hospitality and finance industries have historically attracted workers from around the world. Today, approximately 10% of the Island population is from outside the British Isles. The census in 2001 showed that 53% of Jersey residents were born in Jersey, 36% in the British Isles, 4% in Madeira or Portugal, 2% in Poland and 4% somewhere else in the world.

# How we live

Standards of living in Jersey are generally high and unemployment is low. Our gross national income per person is amongst that highest in the world, at \$US 66,000 per capita it is significantly higher than the UK's \$US 36,000<sup>1</sup>. Our weekly household income, after housing costs are taken out, is approximately 52% higher than the UK.

As in other jurisdictions there are disparities in income amongst different groups of people although for some these are levelling out. In 2002 an estimated 33% of children lived in households considered to have a relative low income. Today that figure is an estimate 22% compared to the UK's 30%.

Household income is, in part, driven by the Island having the highest percentage of economically active women in the world (82%). This includes a high proportion of working mothers (75% compared to 68% in the UK) which can create particular pressures in relation to access and affordability of childcare.

Other pressures include divorce and family breakdown. The divorce rate in Jersey is significantly higher than the UK. In 2008 alone there were approximately 27% more divorces registered on the Island. The rate of relationship breakdown between non-married partners is not known.

---

<sup>1</sup> GNI is an internationally agreed measure used for making comparison between different jurisdictions. Figures are from 2008.

# Why have a Strategic Framework for Children and Young People?

---

We are a small Island and our children and young people are not always able to access the same range of services, facilities or opportunities that others have in the UK, mainland Europe or elsewhere. The number of children and young people in Jersey is not large (approximately 16,500 under 16 year olds) but some of the issues they face are more complex than those faced in much larger jurisdictions. These issues include:

- limited higher education opportunities on the Island and associated costs of studying in the UK or elsewhere
- housing qualifications restricting opportunities and choices (particularly for young people who were not born on the Island)
- high cost of housing making it difficult to rent or purchase property and live independently
- small population size making anonymity hard for vulnerable young people
- lack of specialist facilities for those with a disability or additional needs
- dominance of the finance industry influencing the range of employment opportunities

Jersey does not have the same economies of scale when developing services or infrastructure, so we must ensure that we invest our resources - people, effort, time, money and knowledge - in a way that delivers the greatest possible benefits for all children and young people.

This framework will help us do that.

## Who is it for?

---

The Strategic Framework is for all the Island's children and young people regardless of their needs or their circumstances. Whenever we talk about children and young people we mean all of them, unless we clearly specify otherwise. The Framework applies to children and young people aged 0 to 18 years (apart from in the case of some young people with additional needs, where the age range is up to 25 years).

It clearly sets out for them, their parents and carers, service providers, politicians and decision makers, what we want to achieve on their behalf.



# What is in it?

---

**Section 1** outlines what we want: our vision, our principles and seven key outcomes for Jersey's children and young people.

**Section 2** outlines what we need to do. There is a chapter for each of the seven outcomes which details:

- what we've already been told and what we know
- what we're currently doing or planning on doing
- what we should focus on in the first instance, based on an assessment of current circumstances.

The seven outcomes are all interlinked. For example, being healthy is dependent on a whole host of factors including housing, employment and safety. So whilst this Framework is structured around seven outcomes, many services do not fit neatly into any one outcome: there are areas of crossover and inter-dependency. For this reason we must work together to deliver the Framework as a whole.

**Section 3** outlines how we are going to work together to jointly plan, deliver integrated services and monitor the effectiveness of what we're doing.

# What services does it apply to?

---

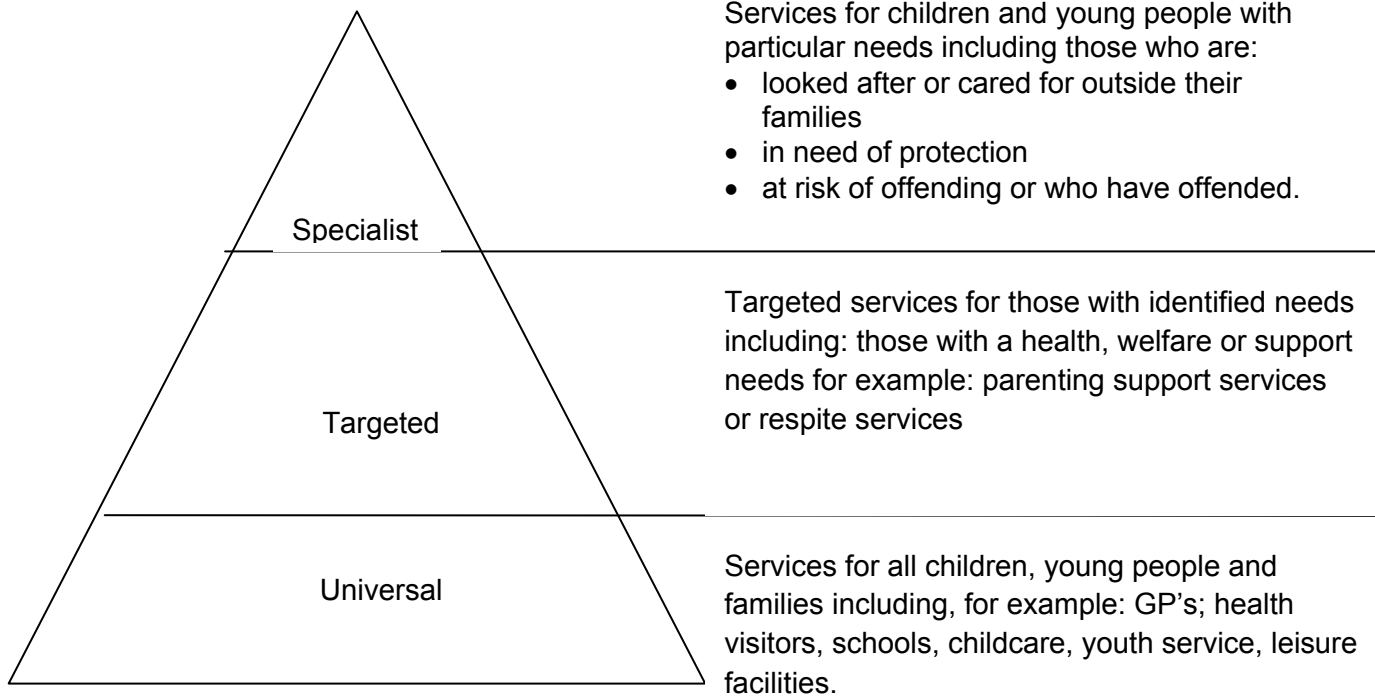
The Framework will apply to all services for children and young people that are either delivered by the States or funded and supported by the States but delivered by external agencies. The Framework will also be of relevance to non-States funded services as it will seek to reduce duplication and identify gaps.

The services covered fall into three broad categories: universal; targeted and specialist. Whilst all children receive universal provision, smaller numbers may require targeted and specialist services.

By identifying and dealing with problems at an earlier stage it is possible to improve outcomes for children and young people and, at the same time, ensure a more cost effective use of resources. This focus on early intervention will be central to supporting implementation schedules.


Whilst access to good services is important, it is only one of many determinants that affect the lives of children and young people. There are other important and more influential social factors such as family, community, the law, peer groups etc. This Framework touches on these issues but it is not a full social policy document. As we work to deliver the Framework, it is therefore essential that the delivery structure (outlined in Section 3), links to the States Social Policy structures, and that it is reviewed on a regular basis to ensure it is current and effective.

# The services triangle



# How is it being developed?

This Strategic Framework is part of a multi-stage development process which will ultimately help ensure the delivery of efficient, effective services that meet the needs of, and our aspirations for, the Island's children and young people

<b>Stage 1: Identifying the need for a Strategic Framework</b>	
The 2008 Williamson Report <sup>2</sup> into child protection services in Jersey recommended that priorities for all services for children and young people were clearly identified.	
The Children's Policy Group (CPG) was set up in 2009 to provide political leadership across all issues affecting children and young people. The CPG identified the need to response to the Williamson recommendation.	
The CPG established a multi-agency working group to develop a draft Strategic Framework.	
<b>Stage 2: Development of a Strategic Framework</b>	
Draft Strategic Framework developed on the basis of:	
<ul style="list-style-type: none"> <li>• mapping of services and data relating to children and young people</li> <li>• a development day with representatives from schools, charities and States departments to agree a proposed vision and outcomes</li> <li>• consultation with 823 children and young people in nine primary and six secondary schools; six parish youth projects; two street based youth work projects, three children's homes, and other young people known to the Youth Action Team and youth justice services</li> <li>• 4 public consultation events, including with the Polish and Portuguese communities</li> <li>• consultation with families in receipt of targeted services</li> <li>• consultation with the voluntary and community sector.</li> </ul>	
<b>Stage 3: Agreeing the Strategic Framework</b>	
The draft Strategic Framework will be subject to a 9 week public consultation period (December 2010 - February 2011)	<div style="border: 1px solid black; padding: 5px; display: inline-block;">Current stage</div> 
The Strategic Framework will be debated by the States Assembly (Spring/summer 2011)	
<b>Stage 4: Turning the Strategic Framework in action</b>	
Governance and Commissioning Structure established (Summer 2011)	
Implementation schedules developed to feed into States Business and Strategic Planning processes (November 2011 onwards). Implementation schedules to clearly outline the work to be undertaken and the services to be delivered.	

<sup>2</sup> Andrew Williamson. Inquiry into Child Protection Services in Jersey, Health and Social Services Dept, 2008.

# Our vision, outcomes and principles

---

*We want all children and young people to grow up in a safe, supportive Island community in which they achieve their full potential and lead happy, healthy lives.*

## ***The outcomes***

In order to make this vision a reality, we have identified seven key outcomes. We want all children and young people to:

- Be healthy
- Be safe
- Achieve
- Grow in a stimulating, nurturing environment
- Be responsible and respected
- Have a voice and be heard
- Move confidently into adulthood

## ***Our principles***

Four core principles will underpin the delivery of these outcomes:

1. the welfare of all children is a principle consideration
2. a focus on early intervention in order to prevent problems developing and escalating thus reducing the need for high cost targeted and specialist services
3. services must be designed and commissioned based on need, impact, effectiveness, efficiency and value for money
4. we must work in partnership across sectors to ensure best use of knowledge, expertise and resources

# **Section 2: Achieving outcomes**

# Be healthy

---

*We want children and young people to enjoy good health - physically, mentally and emotionally. We will work to improve their understanding of health issues, promote their wellbeing and improve services.*

## 1. What you told us

“Being healthy” was felt to be the most important outcome for over 25% of the children and young people we talked to.

There was concern about increasing levels of obesity in children. Parents felt that there was a need for more children to cycle and to look at the value of providing healthy, cooked school lunches in all schools.

People felt that adults were setting a bad example by drinking too much alcohol.

Our Island health services were, consistently, very highly regarded. However the cost of taking children to the GP could be prohibitive and put some parents off using their services.

### ***Children and young people’s voices***

“Health is important because it affects your future”

“It’s about achieving physical, mental and social wellbeing”

“Watching what you eat is important so you have enough energy to play sports”

“Some people come from a healthy background, others have to learn to be healthy”

“If we had more to do, we wouldn’t drink as much”

### ***Adults’ voices***

“It’s hard to get interpreters for non-English speaking families accessing health services”

“It’s very expensive, much of the time you put something off rather than take them to the doctor because of the cost. You shouldn’t feel like that, you should be able to take your child to the doctors.”

“We have a really good health service in Jersey”.

## 2. What the data tells us

### ***Early Years***

- There are approximately 1,000 births per year. The infant mortality rate is 3.6 per 1,000 live births. This compares favourably to the figure of 4.7 in England and Wales.
- In 2009 there were 48 pre-term births under 37 weeks that required admission to the Neonatal Unit.
- In Jersey, breast-feeding rates are high immediately after the baby is born (on average at least 75%) but reduce to 30- 40% at the 6 week health check. There is evidence to show that babies who are not breast fed exclusively to 6 months are at increased risk of a number of poor health outcomes.
- Primary immunisation levels in Jersey are very high and, at 95-98% of children, are better than the UK.

### ***Being active***

- Physical activity decreases as children get older. 69% of 10-11 year olds participate in three or more physical activities per week, declining to 51% by age 14-15.
- Only a third of children are aware of the amount of physical activity they should be doing in order to improve their health.
- Between 2000 and 2006 there was a decline in the number of children cycling or walking to school and an increase in those being driven to school. In the UK approximately 56% of children either walk or cycle at least some of the way to school, compared to only 37% of children in Jersey.
- In 2009 32% of the adult population were overweight and a further 12% were obese. This is increasing year on year in Jersey, leading to a number of associated health risks.
- 27% of Jersey's five year olds are overweight or obese compared to 23% in the UK. This number has risen year on year over the last 10 years.

### ***Food and diet***

- The majority of young people are aware of the '5-a-day' recommendation but this does not translate into practice. On average, around three quarters of children aged 10-15 years do not eat the recommended amount of fruit and vegetables each day.
- One in ten young people aged 10-15 years do not have anything to eat before lessons start in the morning.
- The consumption of crisps or sweets and chocolate on most days increases with age (but this has reduced steadily over the last 10 years). Older males aged 14-15 years consume more from this food group than any other age.

### ***Smoking***

- Smoking accounts for approximately 20% of all deaths on the Island (around 150 people per year).

- Children and young people are more likely to smoke if there are adults who smoke at home. Approximately 39% of 14-15 year olds live in a home where someone smokes and approximately 400 babies are discharged each year from maternity wards to households where at least one parent smokes.
- Whilst smoking amongst 14-15 year olds is decreasing, 17% of 14-15 year olds still report smoking at least 1 cigarette per week and 12% consider themselves regular smokers.

### ***Alcohol and substance misuse***

- The harm caused by alcohol in Jersey is real and measurable. It is estimated that 6% of all deaths in the Island are premature and caused by alcohol related conditions.
- In Jersey we drink one and a half times more alcohol per capita than in England and Wales.
- In Jersey the number of licensed premises per head of population is double the number in England and Wales.
- Approximately 11% of young people aged 14-15 years drink regularly, with approximately 8% drinking at least double the recommended adult limit. Children who drink are at increased risk of physical and social harm.
- On average the specialist Alcohol and Drugs Service has only 35 referrals per year for those under 25 years. Whilst this number is small, young men are over represented in these figures.
- Approximately a quarter of young people are under the influence of alcohol on arrival at police detention.

### ***Sexual Health***

- Teenage pregnancy rates for under 16's are much lower than in England and Wales (2.3 per 1,000 compared to 7.8 per 1,000).
- The rate of local under 18 conceptions remains low (16/1000) compared with UK (40/1000).
- Brook (Jersey) figures for 2009 show that 850 females requested emergency contraception with approximately 199 of those being under 16 years old.
- The pregnancy rate for under 18 year olds is low in Jersey and the majority in this age group who do become pregnant choose a termination.
- It is estimated that 20% of 14-15 year olds report they are having, or have had, a sexual relationship. This compares with 25% in the UK.
- The local survey revealed that only 64% of 14-15 year olds say that they have the confidence to say no to sex. There is a difference between girls and boys with 80% of girls saying no compared to 45% of boys.
- 53% of young people report sex education lessons are their main source of information compared to 36% in previous years.
- In general young people's knowledge of contraception has increased over the years. For example in 2010 approximately 77% of 14-15 yr olds knew where to get free condoms and 79% correctly identified condom use as a reliable method of preventing sexually transmitted infections.



## **Specific Health Conditions**

- The top three reasons for hospital admissions for those 18 years and under include: respiratory diseases (most commonly asthma and tonsillitis), accidental injury and poisoning and diseases of the ear.
- There are approximately 39,700 attendances at the Accident and Emergency Department per year in Jersey, compared to 11.9m per year in the UK. This equates to 432 visits per thousand people in Jersey which is significantly higher than the UK's 199 visits per thousand people (NB: caution needs to be applied to these figures due to some differences in data collection techniques and services provided)
- On average children visit a GP between 1.25 and 3 times a year. GP's in Jersey are private businesses and people pay to see them.
- The total number of children or young people with mental health problems in Jersey is not known. UK estimates suggest that 1 in 10 children or young people would require help and support for a mental disorder, which, if this was correct for Jersey would equate to approximately 1,800 children and young people.
- Jersey's specialist Child and Adolescent Mental Health Service (CAMHS) provides support, supervision and consultation to approximately seven services (for example: paediatrics and school counsellors) in addition to working directly with 540 children and young people aged less than 18 years. Of these, 39% had developmental disorders (e.g. Attention Deficit Disorder and Autistic Spectrum conditions) and 23% had emotional disorders (e.g. depression and anxiety).
- In 2008 there were 18 hospital admission of young people who self-harmed and 22 in 2009. Of these 90% were for poisoning. Professional opinion indicates that alcohol was a major influence in most incidences. There is nothing to indicate that the prevalence of self harm in Jersey is different to the UK.

## **3. What we are doing and planning**

### **Early Years**

In Jersey, as in other jurisdictions, a number of babies are born pre-term (approximately 10 per year are born at less than 29 weeks). An early intervention service is currently being piloted to monitor the development of these very vulnerable babies. The service, which brings together paediatric physiotherapy, occupational therapy, speech and language therapy and a consultant paediatrician, is in-line with best practice clinical guidelines and aims to identify and address development problems at a very early stage. A Paediatric Liaison Health Visitor is to be appointed to provide continuity between the Hospital and Community Care.

Breast-feeding has a vital role in the health of children. Breast fed babies are less likely to become overweight or suffer from a whole range of illnesses and allergies. The health visiting service is working to support more mothers to breast-feed for longer. Activities include encouraging employers and businesses to provide breastfeeding facilities and providing support at two venues known as baby cafes (with breast feeding support groups and professional advice for new parents).

Jersey has the highest percentage of economically active women in the world, yet at present employment legislation does not extend to statutory maternity pay and/or leave (although a contributory benefit is payable for 16 weeks in addition to a lump sum grant). This legislation which is critical to help support women to breast fed for longer is currently being developed and proposals will go to the States in 2011/2012.

Following the recommendations of the recent *Hall Report*<sup>3</sup>, 'The Healthy Child Programme' has been introduced by the Family Nursing and Home Care organisation. It provides universal support for all families with young children and additional support for those who are most vulnerable.

All schools currently have access to school nursing. An additional school nurse and school nurse assistant are being appointed to support children at Mont à L'Abbé and Haut Vallée schools.

School nurses currently carry out the standard height and weight measurements in Reception Year, when children start primary school. There are plans to extend this routine measurement to include all children in Year 6. This would help improve local data and trends on child health and inform future preventative services for children and families.

### **General Practice (GPs)**

It is widely acknowledged that GPs have an essential role to play in helping parents and carers to look after their children both through medical diagnoses, preventative care and the provision of more general advice and reassurance. GPs are often the first port of call for parents and carers managing a new and unknown situation with their child.

At present, the State subsidises the cost associated with taking a child to the GP and makes an allowance for GP visits when calculating benefits. Anecdotal evidence suggests that cost of GP's visits may result in parents attending the Hospital Accident and Emergency Department instead but this would require substantiating.

The States Public Health team also subsidises free baby developmental checks and six free immunisation visits for the under-fives at GPs practices. This helps ensure that the cost of GP's visits does not present a potential barrier to children receiving essential immunisations, plus it helps ensure that parents are sent timely, systematic reminders about the need for immunisation.

In addition the Public Health team manages CHIS, a centralised Child Health Information System that tracks children from birth, through pre-school years and school health careers. It provides a recall service which invites parents, at the relevant time, to visit their GP for baby development checks and immunisations. This helps ensure that the GP is the prime point of contact for a child's early healthcare needs.

### **Dental services**

Changes in diet have resulted in children being increasingly susceptible to dental problems. Decay spreads rapidly in thinly enamelled milk teeth and can result in life-long problems. The States currently subsidises some of the costs associated with taking children to the dentist through the *Dental Fitness Scheme* and through *Dentistry Special Payments* for those in receipt of income support, or with an income just above the Income Support threshold. A review of dental services undertaken by the Health, Social Security and Housing Scrutiny Panel during 2010 makes a range of recommendations which will be assessed during 2010/11.

### **Being Active**

At present 27% of Jersey's five year olds are overweight or obese compared to 23% in the UK. We aim to reduce this by:

- continuing to roll out of the National Healthy Schools Programme. To date seven Jersey primary schools have achieved National Healthy Schools Status and 10 additional schools are working towards it. Each one has demonstrated a commitment to developing good practice around physical activity, food and nutrition, emotional health and wellbeing, and personal, social and health education.

---

<sup>3</sup> The Hall Report (4th Edition)

- continuing targeted work by the Community and School Sports Department (CSSD) who work with over 800 pupils each week in schools that have been shown to have less access to sports than other schools
- build on the *Primary After School Physical Activity Programme* which ensures increased provision of physical education for targeted groups. The *ECO-Active*<sup>4</sup> toolkit also supports schools to develop sustainable travel plans that encourage children to walk and cycle.

## **Smoking**

Fewer Islanders smoke now than 10 years ago but 17% of 14 and 15 year olds still report smoking. The Tobacco Strategy (2010 – 2014) aims to reduce this to 5% over the next 5 years by:

- supporting behaviour change amongst all Islanders, including pregnant women and new parents, so that babies and children have smoke free homes
- ensuring health professionals have the right information to help smokers quit and make it easier for smokers to access services
- updating legislation to make it harder for young people to access tobacco
- working with children and young people in schools in order to change behaviour.

## **Alcohol**

Consuming high levels of alcohol increases the risk of developing liver cirrhosis, cancers and heart disease. 4.2 litres of alcohol (equivalent to about 180 bottles of wine) per person per year are drunk in Jersey. The Medical Officer of Health report (2010) identified key actions required to reduce the harm caused by alcohol, including:

- enhancing early preventative interventions for under 18 year olds who are known to be drinking hazardous amounts
- introducing screening and counselling in primary care services
- ensuring public health is a key objective in the revised Liquor Licensing Law (Jersey 1974)
- establishing an alcohol pricing policy to reduce overall consumption.

Drinking is a major factor in crime and disorder. It also contributes to divorce, domestic violence and poverty. Reducing alcohol consumption across the whole community would deliver a multitude of benefits to children and young people.

## **Sexual Health**

Research shows that the age of first sexual intercourse is decreasing and local service data shows that the demand for sexual health services remains high. Children and young people need age-appropriate information and support to help them make their own positive personal choices about sexual health. Jersey students have a similar level of knowledge about sexually transmitted diseases to their UK counterparts but appear better informed about contraceptive services.

---

<sup>4</sup> ECO-Active toolkit is available from: [www.gov.je/Environment](http://www.gov.je/Environment)

A diverse range of services and interventions exist to assist and inform young people as they grow into adults:

- the PHSE curriculum ensures that primary and secondary students receive age appropriate education and information. This is reinforced through informal education via youth workers, the youth work curriculum and the Youth Enquiry Service (YES)
- Brook (Jersey) is a bespoke integrated sexual health service which offers advice and guidance as well as contraceptive clinics to young people
- the Health Promotion Team provides professional support to those teaching PHSE and co-ordinates the condom distribution scheme
- ACET's Sex and Relationship Programme is delivered in some secondary schools, through a street based youth work team and supported by a special needs facilitator.

In addition, the Chlamydia Screening Programme targets the testing of young people under 25 year olds for the most common sexually transmitted infection. The programme is offered as part of existing hospital and community sexual health services.

### ***Children and young people's health services***

Over the coming year, the Health and Social Services Department is to undertake a major review of the Island's future health, community and social care needs. This will include outlining potential options for the future provision of health and primary care services to all Islanders, including children and young people.

### ***Speech and language***

Speech and Language Services are moving to a model of consultative working for children of secondary school age and developing a service for children with English as an additional language through the appointment of a bilingual co-worker.

### ***Emotional & mental health***

Promoting positive emotional and mental health and well-being of children in Jersey requires all services to work together. At present services comprise:

- universal support services provided by school counsellors in all State secondary schools and some independent fee paying schools
- the Youth Enquiry Service (YES) offers free and confidential information, advice and counselling support to young people aged 14 – 25 and has referrals from agencies such as GP's and Social Services, as well as self referrals
- CAMHS (Child and Adolescent Mental Health Service) targeted and specialist services are provided by: the Youth Action Team, Multi-agency Support Teams (MAST) operating in schools and Specialist Child and Adolescent Mental Health Services
- the *Pathway Plan* developed by CAMHS and the General Hospital sets out the process for supporting children and young people who self harm. Support is also provided in a co-ordinate manner through school counsellors.

A new multi-agency CAMHS Strategy is planned. It will target children and young people with the highest risk of mental health problems, as well as promoting positive mental health through prevention and early intervention work. The recent appointment of additional staff, including three psychologists and one consultant child and adolescent psychiatrist, will help improve existing services and reduce waiting times.

## ***Children's surgery***

The UK's Royal College of Surgeons and other professional bodies are driving forward far-reaching recommendations about models of surgical care for children and young people that focus on their specific needs and circumstances. These potentially have far reaching implications for smaller jurisdictions where access to specialist facilities and professional specialisms is limited by population size.

A review of children's surgery in Jersey will form an important component of the overall strategic review of the Health and Social Services Department and could, potentially, result in significant changes.

## ***Disability***

Those who have a disability and/or complex needs currently receive targeted support from a range of services and organisations including, but not limited to:

- the paediatric health team
- the multi-disciplinary child development service
- the disabled children's social work team
- sensory needs services
- Eden House and Oakwell, providing respite services
- the Youth Inclusion Project
- Jersey Mencap
- Autism Jersey
- Headway.

Work is focused on ensuring the early discharge of children and young people from hospital and developing community services through care at home or in clinics. We are also working together to improve services for paediatric palliative care and respite for disabled children.

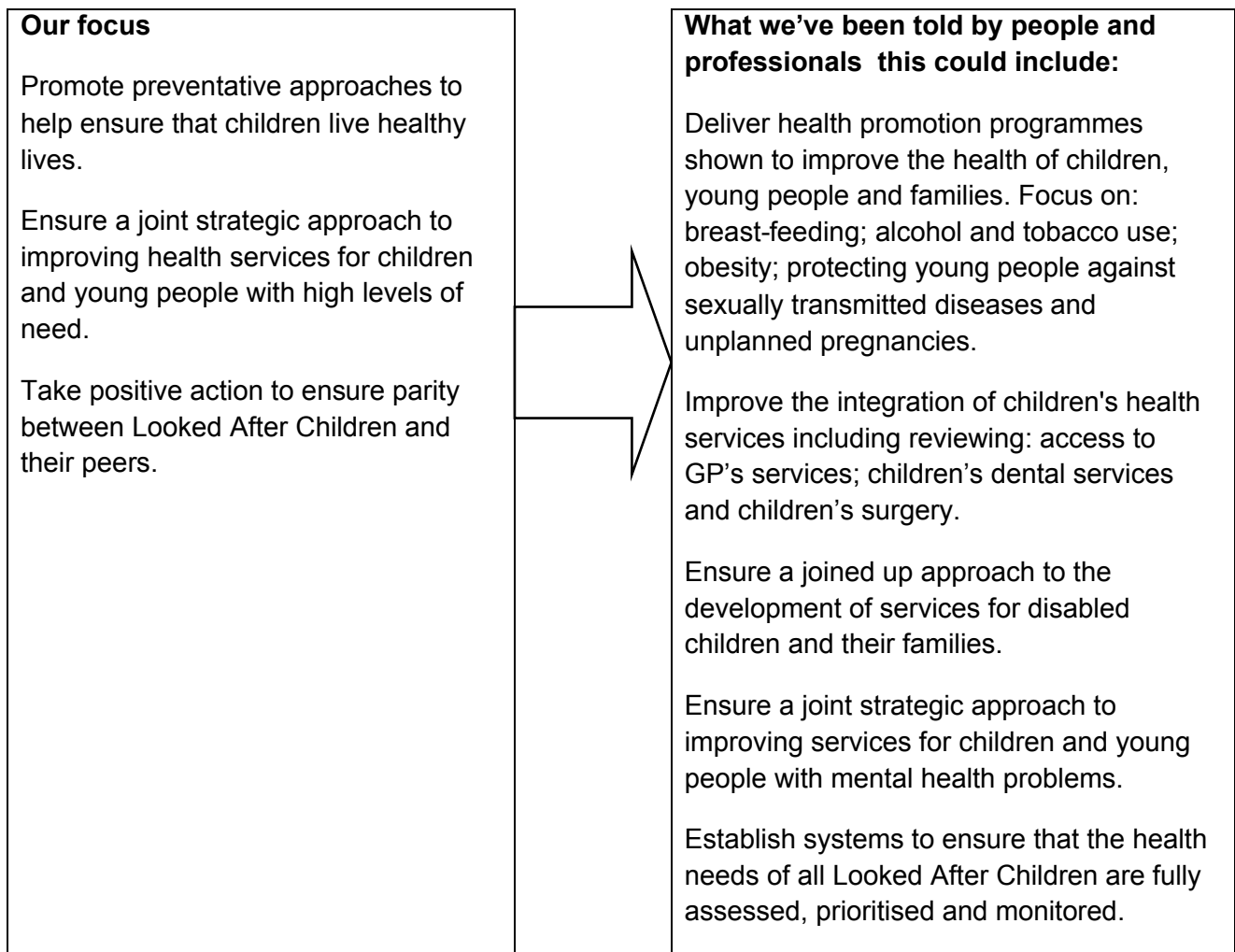
There is currently no comprehensive data about the number of children and young people with disabilities in Jersey, nor about the nature of their disability. We do know from user feedback however that a more coherent and comprehensive support system is required. We are therefore working together to clearly define what we mean by disability, to obtain more comprehensive data and to strategically plan services together to meet need.

## ***Looked After Children***

We need to further strengthen our information about the health and wellbeing of Looked After Children in Jersey in order to help ensure that they can lead healthy lives. In addition to work being undertaken by current staff, a new multi-agency liaison group has been established to help improve their health and a Paediatric Liaison Health Visitor is being appointed together with a dedicated Nurse and Medical Adviser for Looked After Children.

## 4. Focus for future development

Based on an assessment of the issues affecting the health and wellbeing of children and young people we propose to focus, in the first instance, on the following developments:



# Be safe

---

*We want to protect children and young people in our community and help keep them safe from harm. We will work to reduce the risks they face and help develop protective behaviours.*

## 1. What you told us

The majority of children and young people said feeling safe was the most important thing to them and that Jersey did feel safe (86%). However they also said that some of the worst things about the Island were a fear of crime and too much traffic.

Parents told us that whilst Jersey feels like a very safe place to bring up children, they are concerned about allowing children to cycle or walk because of the perceived risks posed by narrow roads.

Some parents (who do not have English as a first language) expressed some concern about bullying and racism towards their children.



### ***Children and young people's voices***

"Friends look after each other by hanging around in groups"

"Having special talks about drugs and staying safe helps"

"Don't talk to anyone you don't know on the internet or social networking groups"



### ***Adults' voices***

"I think we've got a good easy life compared to England because the children can go out on their own and be relatively safe without being supervised"

## 2. What the data tells us

### **Community Safety**

- 91% of Jersey residents consider their neighbourhood to be safe.
- 71% of those who visit St Helier, after dark, feel safe.
- 13% of 14-15 year olds felt that safety was poor after dark in the area in which they lived.
- On average there are 4,000 Accident and Emergency (A&E) attendances a year due to an under 17 year old sustaining an accidental injury, although this figure is reducing as a total proportion of all A&E attendances.
- Jersey has a low rate of road traffic accidents involving children. In 2009 there were only 10 who had an injury serious enough to require hospital admission. Despite this, the public believe children are at high levels of risk on Jersey roads.
- Crime levels in Jersey are significantly lower than the average in England and Wales (roughly half) and overall recorded crime is the lowest it has been in the last five years.
- Less than 13% of known crime victims in Jersey are children and young people (2009).
- Domestic violence accounted for over 27% of assaults recorded in Jersey. Police were called to 1,046 incidents of domestic violence in 2009. Children were present in 551 of these.
- Men as well as women are victims of domestic abuse. Victim Support provides services to approximately 290 male domestic abuse victims a year
- The incidence of bullying decreases from 19% in 12-13 year old to 12% in 14-15 year olds. Males are more likely to report being the victim of bullying than females.

### **Child Protection**

Significant improvements in training and awareness amongst professionals working with children have, over the last few years, resulted in children who are potentially at risk of neglect or abuse, being more readily identified. This increased awareness, combined with other factors such as the rapid rise in internet use (with the associated potential for on-line abuse) has resulted in marked changes to the numbers of children being referred to services, for example:

- reports to the Police concerning child protection issues rose by 159% in 2008. This was consolidated by a further 2.4% increase in 2009 when the Police dealt with 421 such referrals.
- the average number of new registrations of children on the Child Protection Register has remained consistent (6 per month) but children are now remaining on the register for longer. The numbers on the register has therefore increased by 100% over a three year period to 73.
- the rapid rise of the internet and other mobile communications has created the potential for associated on-line abuse, such as bullying or grooming for sexual exploitation. The nature of mass communication means that the numbers of people associated with any one single incident can be high. During the last 2 years in Jersey, an average of 1 in 30 girls aged 8 - 13 years old who use the internet have been a potential target of on-line grooming networks.
- High numbers of children (93%) report having at least one adult they can trust.



### **3. What we are doing and planning**

#### ***Community Safety***

A significant part of police work involves community safety for children by:

- identifying and detecting offences committed against children
- using problem-solving approaches with neighbourhoods to address safety issues (such as Halloween)
- reducing crime and disorder and working with those areas at highest risk
- developing road safety education initiatives.

However ensuring the safety of children and the wider community requires work across all agencies. In Jersey, we have sought to achieve this through the development of a number of successful partnerships, which include:

- the Building a Safer Society partnership
- Community and school sports development
- Victim Support
- Prison Me No Way
- Safer St Helier
- Crime Stoppers Board
- People Against Crime
- the Road Safety Panel
- Street Based Youth Workers
- the Roseneath Committee of Management
- the Youth Action Team
- the Honorary Police.

#### ***Domestic violence***

Children who live with domestic violence are at increased risk of behavioural problems, emotional trauma and mental health difficulties in adult life. Breaking the cycle of domestic violence is essential for the wellbeing of children. Over the last two years there has been a 30% increase in the number of recorded incidents of domestic violence. This rise could potentially be attributed to historic under-reporting. The increase in reporting enables more victims to receive support and the behaviour of more offenders to be tackled.

The Jersey Domestic Violence Forum has set up a number of sub-groups to address domestic violence issues. Work includes a new Island policy to address domestic violence and a plan to hold an awareness raising event for young people in 2011.

The Jersey Women's Refuge, which provides a secure place for victims and their children escaping violence at home, also provides training for agencies across Jersey and awareness raising campaigns. The Refuge is working in schools to explore domestic violence issues and provide support for children and teenagers.

### ***Child Accident Prevention***

In Jersey, childhood accidents account for approximately 4,000 A&E attendances a year, and in the UK they are known to be a leading cause of child mortality. Reducing the incident and impact of accidental injury is the key aim of the multi-agency Child Accident Prevention group (CAP). In addition to leading ongoing awareness campaigns, such as cycle helmet, seat belt and child car seat use, CAP provides reduced priced safety equipment for families and works directly with schools to help increase children's knowledge and awareness of risk.

In March 2010, the States of Jersey voted in favour of introducing new legislation making it a requirement for all under 18 year olds to wear cycle helmets.

### ***The Jersey Child Protection Committee***

To keep children and young people safe from harm all agencies must work closely together. The Jersey Child Protection Committee (JCPC) was established in 1996 to facilitate a co-ordinated approach to protecting children from harm or maltreatment. It has an independent chair and a committee made up of key partner agencies and a number of sub-groups, including:

1. serious case review
2. communications and planning
3. e-safety
4. procedures and audit
5. safeguarding children living away from home
6. education and training.

Its recent work has included:

- developing multi-agency procedures and protocols
- agreeing thresholds for identifying need
- establishing protocols for professionals working with sexually active children and young people
- developing complaints procedures
- conducting serious case reviews in the event of a child death or a child being subject to serious harm
- working with the Child Exploitation On-Line Protection Centre (CEOPS) to provide e-safety awareness for retailers, parents, carers and professionals working with children
- auditing of child protection conferences which take place when a child is suspected of being at risk
- the provision of multi-agency training.

## ***Bullying***

Partnership working is helping tackle the fear of bullying. All schools now have procedures in place to tackle bullying, supported by awareness raising and curriculum based activities. Data shows that this has resulted in a perceived reduction in bullying.

## ***Vulnerable Children***

The States Departments and voluntary sector organisations work together to provide intensive support and services for vulnerable children. These include general family support, preventative work, child protection investigations, care for Looked After Children and those with disabilities and support for foster carers and prospective adopters. New developments for vulnerable children include:

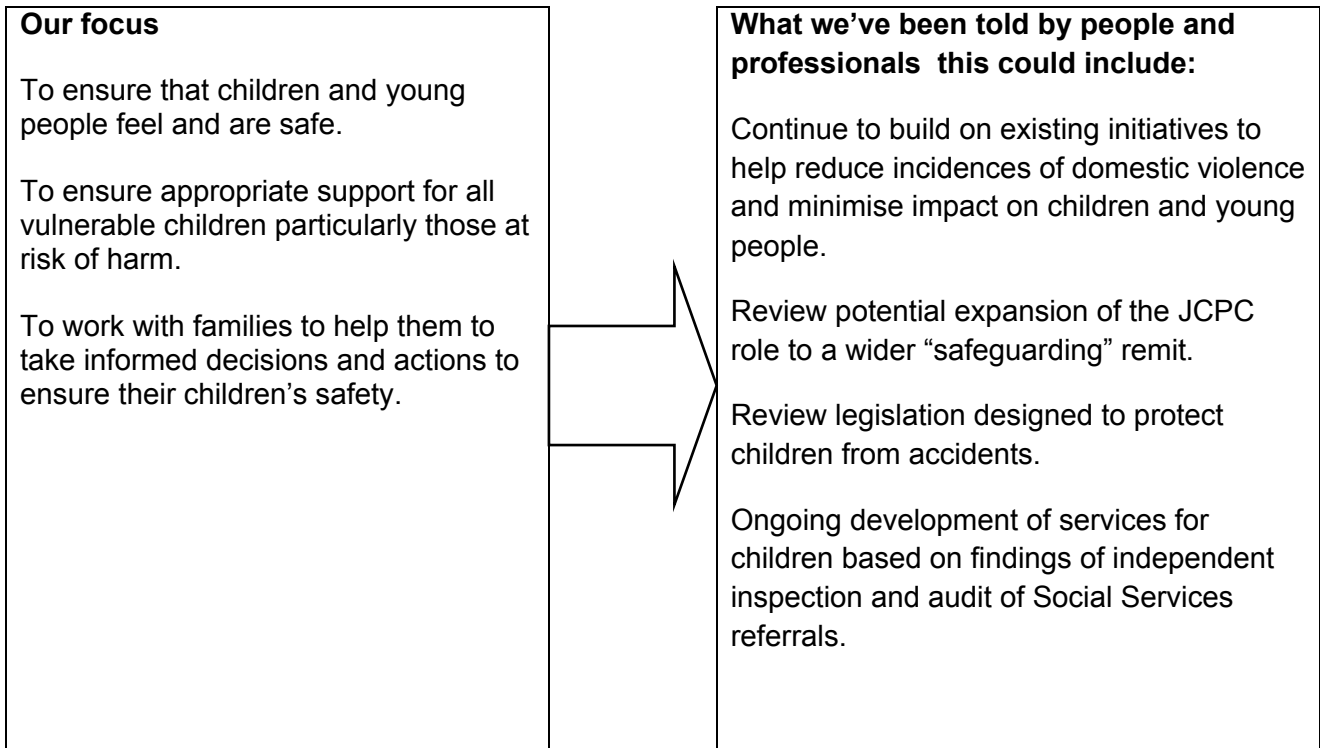
- independent inspection of services for Looked After Children to be conducted in 2011
- an audit of referrals and eligibility criteria of Children's Social Services in order to inform future developments
- creating a bespoke Jersey Family Court Advisory Service to provide support to children in court proceedings
- the creation of 4 new social work posts to become part of Multi-Agency Support teams (MAST) in mainstream secondary schools
- the creation of an Offender Management Service to manage risks posed by convicted sex offenders living in the community
- supporting an Independent Board of Visitors to provide oversight of Jersey's Children's Residential Services
- the expansion of the Public Protection Unit to cater for the increasing demand for child protection and domestic violence cases
- work to help reduce the level of unauthorised absences from children's resident care homes, thus helping ensure the safety of the children and limiting opportunities for them to participate in anti-social behaviour. This includes a joint protocol between Children Social Services and the States of Jersey Police which has had a significant beneficial impact.

## ***New vetting arrangements***

Following legislative and associated policy work with UK agencies, the final quarter of 2010 will see the introduction of major changes to current employment and regulatory vetting procedures within Jersey. This will enable local employers and regulators to have direct access to the Criminal Records Bureau (CRB) in England and Wales, and will have significant impact on improving measures that support local safeguarding of children. Connected to this initiative the police are establishing a dedicated CRB Disclosure Unit with responsibility for disclosure of local information and intelligence into the national system.

## 4. Focus for future development

Based on an assessment of the issues affecting the safety of children and young people we propose to focus, in the first instance, on the following developments:



# Achieve

---

*We want all children and young people to realise their aspirations and achieve their full potential. We will work to improve the opportunities available for all including those with additional needs.*

## 1. What you told us

231 children and young people surveyed felt that having a good education was the most important thing to them. This was a particularly significant perception amongst primary school age children.

Whilst 54% of children and young people surveyed felt there were many activities for them to become involved in and develop new skills, 77% also felt that there was a lack of activities and a need to develop more. Parents felt that there are lots of activities on the island for children and young people but some can be expensive, or require transport, so there are children who miss out.

Parents overwhelmingly think that our education system is excellent. However there is concern about there being fewer opportunities for those who are not academically minded and the lack of availability of a broad range of vocational opportunities for young people because of the size and makeup of the Island economy.



### ***Children and young people's voices***

"It's important to earn enough money in an enjoyable job"

"To be able to have freedom and follow your dreams"

"It's important to have a good education and believe in yourself"

### ***Adults' voices***

"Activities are quite expensive and families who don't have a great income miss out on certain things"

## 2. What the data tells us

### ***Learning***

- There are just over 12,000 pupils in compulsory education and approximately 1,000 young people in education aged 16 and over.
- Jersey has a unique education system that comprises 43 primary, secondary and specialist schools. Some are private, some States fee paying and some non-fee paying States schools.
- A very small number<sup>5</sup> of families educate their children at home, monitored by the Education Support Team.

### ***School Attendance***

- School attendance in Jersey is high with an attendance rate of 95.4% in primary schools and 92.8% in secondary schools.
- Unauthorised absence levels are lower than the UK (0.26 in primary schools and 0.97 in secondary schools).
- In 2008/9 497 pupils were suspended from school for a fixed term. 104 were given more than one suspension. Whilst this is a significant number, the overall percentage is very low in comparison with England.
- There have been no permanent exclusions in Jersey for several years.

### ***Achievement***

- Jersey children and young people do well compared to their counterparts in England. In 2009 71% of year 11 students achieved 5 or more A\* to C Grades.
- In 2009 of the 1,024 year 11 students, 94% are known to have gone on to further education, training or employment.
- Only a very small number of young people (0.5%) left school with no qualifications in 2009<sup>6</sup>.
- 81% of A-level entries in Jersey in 2009 achieved grades A to C compared with 75% in the UK.
- 47% of young people go on to university and higher education courses.

---

<sup>5</sup> The actual number is not given because it is so small it could result in those children or young people potentially being identified.

<sup>6</sup> The actual number is not given because it is so small it could result in those children or young people potentially being identified

### ***Children with Additional Needs***

- A Record of Need is issued when a child has special educational needs requiring additional arrangements to be put in place. There are currently 318 children in Jersey with a Record of Need. 228 of these are placed in special educational settings. Others receive education in mainstream schools with additional support.
- Jersey successfully educates its own pupils with only a very small number of children requiring specialist provision off the island<sup>7</sup>.
- 164 children in primary schools and 52 in secondary schools require language support.

### ***Developing skills and interests outside school***

- Over 400 young people age 14 + are currently doing their Duke of Edinburgh's Award.
- Over 2,500 children and young people belong to a uniformed youth organisation (e.g. Scouts).
- 68% of children participate in after school sports.
- 39% of 15-16 year olds belong to a club of some kind.

## **3. What we are doing and planning**

We know that achieving good examination grades helps children and young people have greater opportunities in life and we also know that it is important for children to enjoy learning and to have the opportunity to develop skills and interests, not only in school settings but also in their leisure time. This is at the heart of the work undertaken by the Department for Education, Sport and Culture. Key objectives include:

- continuing to raise standards and improve key outcomes for children and young people
- working with the Skills Executive to ensure that vocational education is available
- developing programmes and initiatives designed to promote social inclusion and equal opportunity
- encouraging widespread participation learning, sport, leisure and cultural activities
- providing targeted support to meet the needs of vulnerable children and families.

### ***Supporting Learning in Schools and Colleges***

Schools and colleges receive support, training and services aimed at raising educational attainment from a number of dedicated teams which include: The Professional Partners and Teaching and Learning Advisers; the Education Support Team: educational psychologists; education welfare; early years; speech and language; visually impaired; hearing impaired; English as a second Language specialists; special schools and provisions; the Jersey Instrumental Music Service; and the Jersey Youth Service.

All Looked After Children are identified in schools. Data from this work will help inform future support for these children.

---

<sup>7</sup> The actual number is not given because it is so small it could result in those children or young people potentially being identified

## ***Children with Additional Needs***

In addition to special schools, Jersey has developed a range of educational specialist support for children with additional needs. This includes: the Educational Support Team; resourced provisions in mainstream schools to meet physical, hearing, language and social communication needs; and Special Schools for severe learning difficulties, and emotional and behavioural difficulties. An Alternative Curriculum is available for certain Year 11 students who have not accessed Year 10 successfully.

In 2009-10 a review of Educational Inclusion in Jersey was undertaken. The draft report of this review found that the Island does well to include children with additional needs in mainstream State schools with a lower proportion of children attending specialist schools than in England. However, it also suggested that the combination of a selective system and parents choosing to send their children to fee paying schools could be resulting in a heavy reliance on a small number of non-selective mainstream schools to meet additional needs. Work is now focused on:

- proposals to restructure the school system to improve the vocational choice and the breadth of curriculum
- implementing the recommendations of the Review of Educational Inclusion
- providing early support through a cluster-based approach including a range of agencies
- increasing parenting support
- increasing the proportion of children whose needs are met without the need for a Record of Need
- increasing the proportion of children with high level needs whose needs are met in mainstream school placements
- ensuring support for schools to reduce the need for suspension and increase attendance by better meeting the emotional and learning needs of vulnerable children
- establishing a Kite Mark Standard of Developing Awareness and Communication with Deaf and Blind People.

## ***Vocational Training***

A full vocational programme is offered to young people of all abilities, post-16 years. From September 2010, Highlands College began offering vocational subjects to the 14 – 16 age group. The courses run for a day each week as part of personalised education programmes based in schools.

School-based youth work with young people provides creative and alternative ways of learning and supporting social and personal development. Programmes include; On-2-wheels, ASDAN, Princes Trust XL 2 year programme and The Duke of Edinburgh's Award scheme.



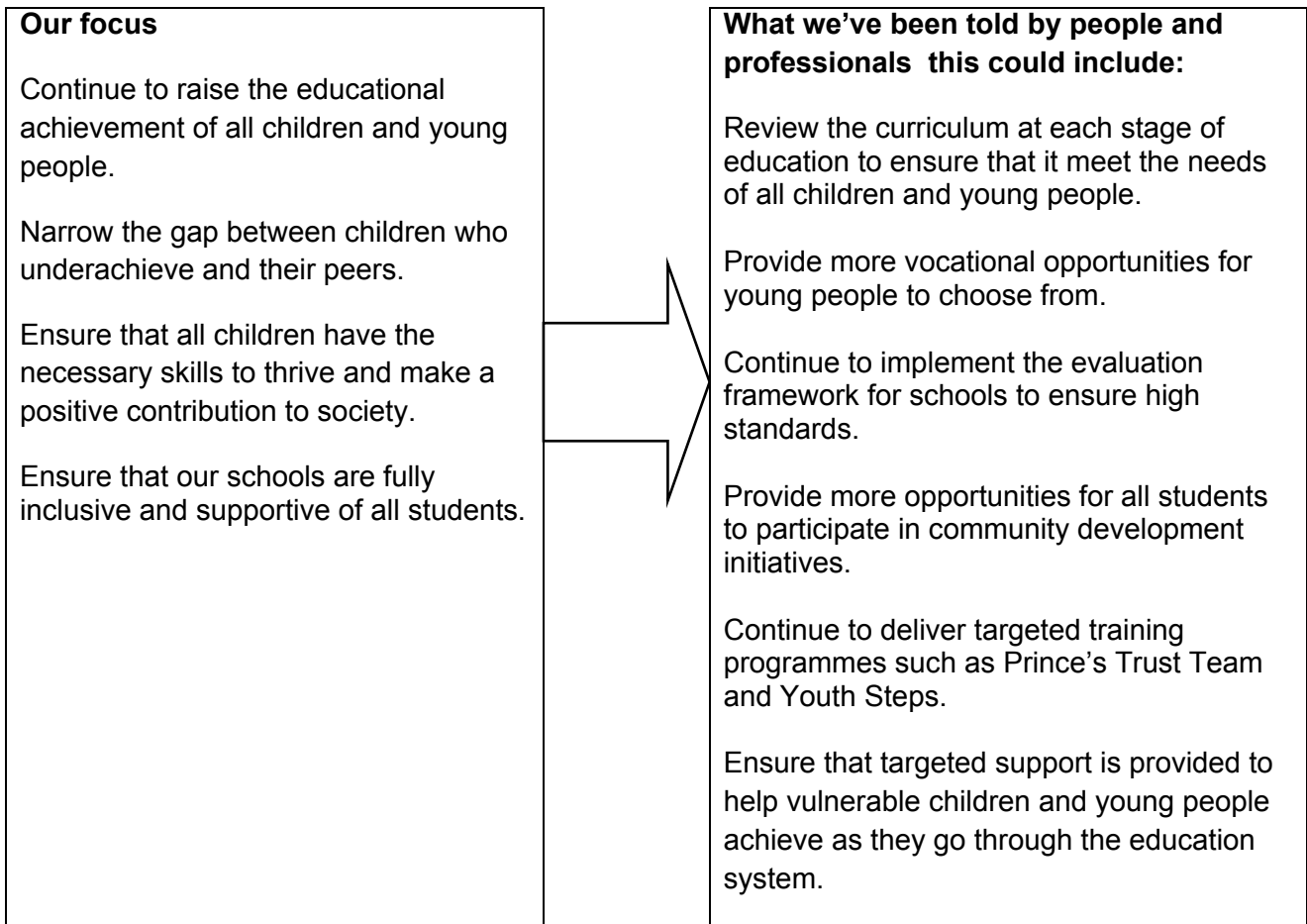
## ***Culture and leisure opportunities***

There are a number of cultural organisations in Jersey which have offered extended opportunities to children and young people: the Jersey Arts Centre, the Jersey Opera House, the Jersey Arts Trust and the Jersey Heritage Trust and the Don Balleine (L'Office du Jerriais). These have included:

- the Arts Centre 'Youtheatre', art exhibitions and competitions for young people and courses and workshops
- La Motte Street Youth Centre offers a social space as well as a range of art development facilities for young people. The Centre and staff deliver and host a variety of dance, drama and music workshops, music technology training courses, rock and gig schools, music tuition and coordinates external events such as Junior Battle of the Bands and other live performance stages for young people.
- opportunities for children to hear music, from cultures around the world (developed in conjunction with the Instrumental Music Service)
- the Jersey Eisteddfod which involves large numbers of young people in both the Autumn (stage-based) and Spring (creative arts) festivals
- young people participating in events hosted by the Jersey Opera House
- a membership scheme which provides free access to sites for Jersey school children provided by the Jersey Heritage Trust
- a programme of visits to young people within the curriculum to museums and castles and hosted activities for families with children outside of the school day
- Jerriais teaching to around 200 primary school children each year outside the school curriculum. A new component, part of citizenship, will provide a 'taster' for all primary children. A GCSE equivalent is also being developed for secondary schools
- Jersey's annual Battle of the Flowers parade is a major community project involving hundreds of children and young people from across the Island Parishes and community groups.

## 4. Focus for future development

Based on an assessment of the issues affecting the ability of children and young people to achieve their full potential we propose to focus, in the first instance, on the following developments:



# Grow in a stimulating, nurturing environment

---

*We want all children and young people to feel cared for, nurtured and inspired by the community around them. We will work to improve the support provided to families, and others who care for children, to enable this to happen.*

## 1. What you told us

Jersey is seen by adults and children alike to be a great environment to grow up in. It is seen as safe and nurturing and is often a key reason why families choose to move to the Island, or return here. Children and young people however, also feel that amongst the worst things about living in Jersey are:

- the high cost of living
- housing problems
- the local environment not being looked after and a need for more green spaces
- a need for a better range of shops.

Parenting support was highly valued and there was a general view that we should continue to do more to support parents, particularly new parents, in order to ensure the best outcomes for children and young people. Early intervention and prevention was felt to be crucial to achieving this.

Childcare was a regular feature of concern. It was felt that more choice was needed. Current provision was seen as often expensive which can result in parents using unregistered child minders or feeling that returning to work is not economically beneficial. Some parents also had the perception that benefits for childcare are too rigid and do not provide sufficient opportunities for them to re-enter the workplace or undertake training.

Housing was seen as a concern on a number of levels including: quality of unqualified accommodation; potential overcrowding and the impact that the loss of housing qualifications has on children.

***Children and young people's voices***

"We need love"

"We need the opportunity to use and explore, learn and develop"

"There is support but it is not advertised widely enough and some support is ineffective"

"We need more activities: ice skating, a fun fair, bring back trampolines, open Fort Regent and give us free swimming"

"What about the climate if pollution keeps taking place"

"The best things about Jersey are the beaches and the sea - it's clean and safe"

***Adults' voices***

"I have two young boys stuck in a flat with nowhere to play, so they tend to go and cause mischief somewhere"

"My children are very stifled, they are not allowed to play on the estate and there's nowhere for them to go in town. They end up sitting in a room being aggressive because they can't get rid of their energy."

"Divorce is tough enough on kids, but even harder here because of housing"

## 2. What the data tells us

### ***Children's Environments***

- 86% of the housing market is A-H category owner occupied, rented or social housing. 12% is non-qualified accommodation and 2% is J category accommodation. A-H category social housing accounts for 14%.
- Social Housing waiting lists show greater demand for one and two bedroom homes (77%) as opposed to larger three bedroom or more family homes (23 %).
- 2.8% of private households with children under 18 years were classified as overcrowded.
- 59% of households have a private garden.
- 8% of households with children aged 0 to 5 years have no private or communal green space.
- 7% of households with children aged 5 to 10 years have no private or communal green space.
- There are 21 children's play areas provided across States Social Housing stock (predominantly 3 and 4 bed family homes) and 4 provided by Housing Trusts (who have a smaller proportion of 3 and 4 bed family homes). Only 7% of complaints received by the Housing Department relate to "youth nuisance". Youth nuisance is sometimes, although not always, an indicator of lack of play space.
- In the 2006 Jersey Annual Social Survey, certain urban parishes felt there was little for young people to do (66% of the population in St Clement; 61% in St Helier and 60% in St Saviour).
- There are approximately 15 parks across Jersey.
- There are 18 major accessible beaches across Jersey.
- The Youth Service run 16 Youth Centres across Jersey which provide access to various activities and opportunities for young people aged 11-18 years in every Parish.

### ***Early Years Provision***

- 47% of children under 3 yrs and 90% of those 3 years and above spend time in a childcare setting.
- There are currently 96 Registered Family Child Carers (previously known as child minders) caring for between one and six children each. This is approximately the same per capita as the UK.
- 17 States primary schools have nurseries which provide places free of charge.

### ***Parenting***

- Jersey has the highest percentage of economically active women in the world (82%). It also has a high proportion of working mothers, 75% of women with children under the age of 16 in employment, compared to 68% in the UK.
- Divorce rates in Jersey are higher than the UK. In 2008 there were 2.8 divorces per 1,000 people in Jersey compared to 2.2 in the UK. This equates to 27% more divorces in 2008.

- There are only a very small number of children born to mothers under 18 years of age<sup>8</sup> in Jersey.
- 9% of those caring for a relative or friend are under 16 years of age.
- Approximately 300 parents/carers and 380 children participated in parenting courses per year in Jersey.
- Users of existing parent support services have stated they need additional help with:
  - discipline and limit setting (56% of families)
  - emotion and affection (40% of families)
  - play and engagement (32% of families)
  - empathy and understanding (26% of families).

### ***Household Income***

- The average household income for a couple with at least one child aged under 16 is £1,145 per week. For a lone parent the average is £613 per week. This compares with an average household income for all Jersey households of £860 per week.
- The proportion of households with children falling into the "relative low income" category has fallen since 2002. Taking household income after housing costs have been deducted, 41% of single parents were in the relative low income category in 2009. This compares with 64% in 2002. For couples with children, the proportion has fallen from 28% in 2002 to 19% in 2009.
- In 2002 33% of all children in Jersey lived in relative low income households. By 2009 this proportion had fallen to 24%.

### ***Looked After Children***

- There are 84 Looked After Children in care in Jersey in 2010. There has been an increase of 10% since 2008.
- Children in care have a variety of placements according to their needs
  - around 40% will be placed in foster care
  - around 30% will live with family and friends carers
  - others will live in residential children's homes or other settings (including secure accommodation or residential schools or other placements outside Jersey).
- A very small number<sup>9</sup> of Jersey children are adopted by Jersey families on the Island every year. In addition, a small number of children from other countries are adopted by Jersey families.

---

<sup>8</sup> The actual number is not given because it is so small it could result in those children or young people potentially being identified

<sup>9</sup> The actual number is not given because it is so small it could result in those children or young people potentially being identified

### 3. What we are doing and planning

#### *Housing*

Decent, affordable housing contributes to the well-being of parents and children. Children in stable housing, where there is no overcrowding, do better in school and have reduced exposure to stress, infections and health and safety hazards that affect their physical and mental health.

In Jersey, the system of housing qualifications and the high cost of housing can bring particular challenges. Work to address this includes:

- The Lodging House registration law, and associated order, sets out minimum standards for occupancy levels and facilities relating to registered lodging houses (4% of Island residents). It does not however cover other non-qualified accommodation, such as lodgers in private houses, or non-qualified tied housing (8% of Island residents). The numbers of children and young people living in this accommodation is unknown.
- Social Housing provision, which accounts for approximately 14% of Island residents, has been reviewed. Proposals are being developed to address the recommendations of this review. This will include revising the access criteria for both affordable housing and social housing.
- The States works to support home ownership through its *Property Plan Scheme* which enables social housing tenants to purchase States rental property and through *Home Buy*, which supports low income first-time buyers with children to purchase homes at discounted rates.
- The Population Office's *Relationship Breakdown Policy* was developed in recognition of the harm that can be caused by forcing children to move if the breakdown of their parent's relationship results in loss of housing qualifications. The qualifying criteria, which include length of relationship, period of residency and residential qualifications means that protection is only provided to some children.

#### *Benefits*

Income Support is available to people aged 16 or over who are in full-time work or actively seeking work and who satisfy income and residency conditions. It includes a number of components and/or eligibility criteria that impact on children and young people, both as claimants or as children supported by claimants, including:

- the prime carers of pre-school aged children are exempt from work and are eligible to receive income support if they choose to stay at home to look after their child.
- prime carers who are in employment, or are in some forms of education and training, can receive a higher rate of income support which takes account of their childcare costs.
- support for living and rental costs for adults aged under 25 if they are responsible for, and living with, a child. This helps ensure that young parents can live independently.
- medical costs are covered in two different income support components. The basic competent includes the equivalent of 4 GP visits per person per year whilst the Medical component provides additional financial support to those with long-term medical conditions.

A thorough review of Income Support is underway. This will be combined with the results of the Income Distribution Survey to identify the support that is needed for particular household groups, including families with children.

## **Early Years Provision**

In April 2009 the Early Years and Childcare Partnership, (EYCP), was established as a multi-agency group, in response to a States Scrutiny Report. The group has agreed an EYCP Strategic Plan, which focuses on early years and childcare for children up to the age of 12 years. The plan comprises 5 work streams.

1. **Getting the quality right for over 3s** which aims to produce a Pre-School Quality Framework:
  - setting clear, agreed standards for the kind of education provided in nurseries
  - ensuring that every child has opportunities for high quality learning and development
  - setting targets which establishments must reach to be eligible for States funding through the Nursery Education Fund
  - ensuring community care for the mother before the child is born
  - promoting community care for babies
  - supporting parents returning to work after the birth of their child
  - developing clear standards for the care of children by adults who are not their parents.
2. **Staff qualifications** - producing a framework of qualifications designed specifically for Jersey to enable the Island to maintain a high quality children's workforce.
3. **Social Inclusion** - to help achieve a socially inclusive society, by ensuring equity of opportunity in accessing Early Years and Childcare and all workings of the EYCP.
4. **Play and Care** - to determine what Jersey's under 12s need for quality play and care, and to produce a Play Strategy for the Island.
5. **Monitoring the impact of the new Nursery Education Fund** - introduced in 2009 which provides 20 hours free nursery education to all qualifying three and four year olds.

The EYCP has begun work in all areas, undertaken extensive consultation and reviews, and produced information for families.

## **Parenting and Family Support**

Parents play a fundamental role in their children's lives. Evidence shows that when parenting goes wrong there is increased potential for children to be disaffected, to engage in criminal and offending behaviour, to experience mental health or behavioural problems and under achieve, both academically and economically. Investing in multi-agency, seamless services is essential to ensure that parents receive the support they need.

Targeted parenting support is currently provided in a number of ways, as set out in *Stronger Foundations*, the Island's multi-agency Parenting Support Strategy. The parenting strategy helps support and further delivery of a range of Jersey-based initiatives.

- The NSPCC Pathways Centre offers a family support service predominantly for pre-birth through to pre-school age children, including group work, drop-in activities and parenting and pre-school programmes.
- The Young Mums Group is a project which the Youth Service runs in partnership with Family Nursing and Home Care using the NSPCC Pathways facility at Le Squez. It targets young women 21 years old and under who are pregnant or are already a young mother. The Young Mum's project focuses on supporting the young women by meeting on a weekly basis with others going through the same experience and to get information and advice on any issues they are experiencing in a warm, friendly and safe environment.



- Brighter Futures works with families who have a high level of need. Work focuses on relationships and self-management of stress and anxiety. The aim is to help parents develop effective strategies for achieving family change. In 2009 Brighter Futures supported over 180 families and there is growing demand for the service. Future developments include:
  - extending outreach support to hard-to-reach parents
  - extending provision for attachment work for older children
  - providing training and supervision for the delivery of Journey into Well-Being programmes in schools and other settings.
- The Parenting Support Team offers a range of services including:
  - Universal parenting courses and JELLY clubs (Jersey Early Learning Literacy Years)
  - Troubled Teens courses
  - Family problem solving
  - Courses for separating/divorced parents
  - Support to families who have children with attention-deficit hyperactivity disorder (ADHD)
  - Therapeutic work 1:1 with parents
  - E-Safety advice and guidance.

The Parenting Support Team is also working to develop a network of family-school link workers, whose role is to engage with, and provide information and support to families. A new forum bringing this network together began in September 2010

### ***Early support***

Providing early support to children, young people and families who require it, helps prevent family crises, reduces the need and cost of more targeted intervention and ultimately results in better outcomes for children and young people.

The JCPC has undertaken work to explore the introduction of a common approach to identifying needs, ensuring a consistent approach to assessment across all agencies and providing support earlier. (This is based on the Common Assessment Framework used in England). It is proposed that the new approach will be piloted in early 2011.

Projects designed to provide early support to children and young people who are considered as potentially in need include:

- the mainstream nursery project and the Assisted Nursery Places Scheme, which helps ensure that young children (under 5) who are in need, often as a result of family difficulties, can attend Island nurseries. The project provides the children with access to a positive, stimulating environment.
- the Preventative Focus Work Project, which provides individually tailored support on a one-to-one or small group basis to young people considered in need. Issues include anger management, keeping safe and self esteem. Follow on work can include engaging the young people in main stream activities or learning (for example, football skills and cooking skills). This provides a positive focus for the individual and essential respite for the family. During a 15 month period in which 82 children participated, only a very small number<sup>10</sup> were placed in care whilst on the project, indicating the role that such projects can have in early intervention.

---

<sup>10</sup> The actual number is not given because it is so small it could result in those children or young people potentially being identified

## ***Looked After Children***

For some children and young people living at home is not an option and they are cared for by Children's Social Services. Children and young people are supported by social workers and placed with families through foster care, family and friends placements, adoption or in one of the five residential children's homes in Jersey. If the child has a disability and appropriate family based placements are not available, consideration may be given to placing them in the hospital or another residential care setting.

Whilst the numbers of children and young people in the care system has risen in the last three years, a large number are older teenagers who will leave the care system in due course. It is therefore estimated that the numbers in care will reduce to 60 by 2013.

The fostering and adoption team have greatly improved placement choice and availability for children and young people of all ages and reduced the previous dependency on residential children's homes. More children than ever before are accommodated in family placements.

We know from research in the UK and elsewhere that outcomes for Looked After Children are not as good as their counterparts. There is a growing body of evidence which suggests that Looked After Children, as a whole, do better if they remain beyond the age of 16 in their care environment, as opposed to living independently.

Current developments to improve services for Looked After Children in Jersey include:

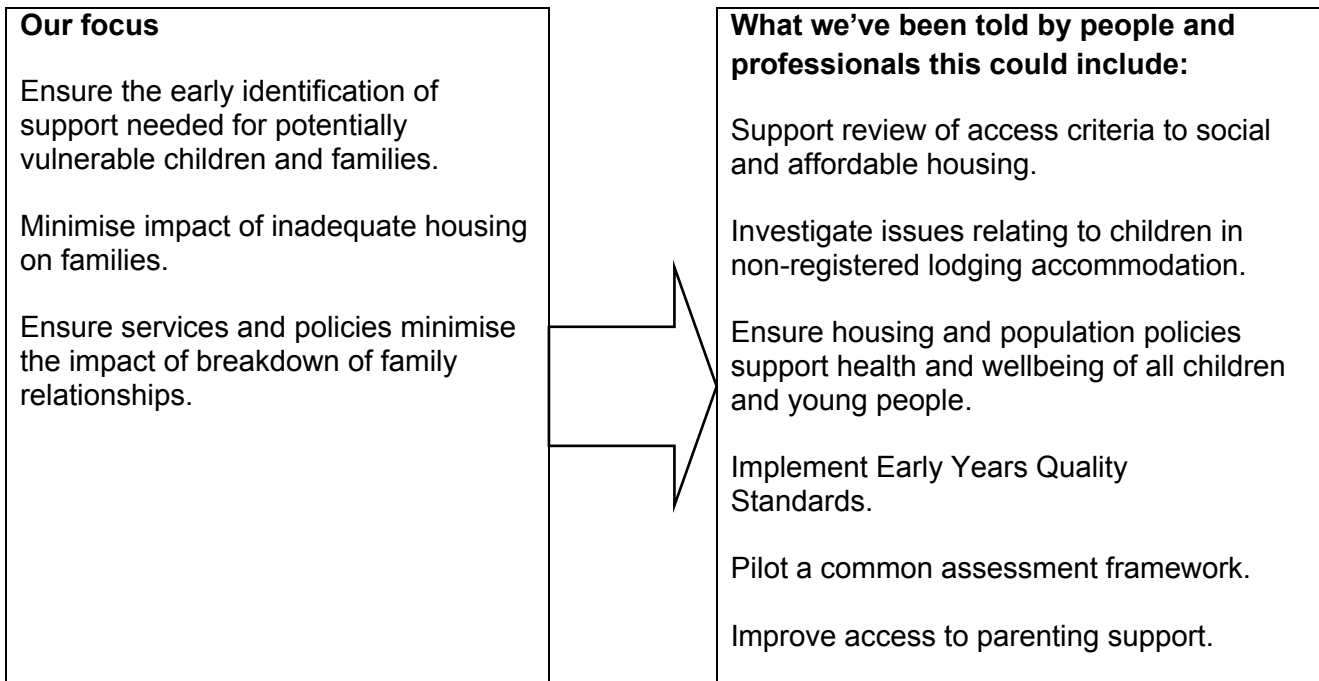
- the development of a new management structure for Children's Social Services
- the development of a new Intensive Support Team, supporting children, young people and their families at times of crisis and providing support for those returning home after a period in care
- a review of provision for disabled children and those with complex needs, to include residential care provision over the short, medium and long term
- the appointment of an independent reviewing officer to ensure that all Looked After Children have appropriate care plans and support
- the refurbishment of Brig-y-Don children's home
- developing pathways to better support Looked After Children, and other vulnerable young children, after the age of 16
- the further development of the emergency duty system
- upgrading the case management database
- the appointment of an external inspection agency.

## ***Young Carers***

The States of Jersey, together with the Jersey Association of Carers, launched a new carers' strategy in 2010. This included a commitment to invest in improving support for young carers to ensure that they fulfil their potential and aspirations. A young carers' group has been set up at Le Rocquier School for young carers and further work is now taking place to establish groups in the other secondary schools in Jersey over the next couple of years.

## 4. Focus for future development

Based on an assessment of the issues that affect whether children and young people feel cared for and inspired by the community around them, we propose to focus, in the first instance, on the following developments:



# Be responsible and respected

---

*We want children and young people to act responsibly and to be respected by others. We will work with them and the wider community, including those involved in youth justice, to help engender mutual respect and understanding.*

## 1. What you told us

Consultation events revealed that there was a general feeling amongst children, young people and families that the public could be quite negative about young people in Jersey. There was concern that this was fuelled by the media and could lead to some intolerance. It was felt that more could be done to engage young people in volunteering and community activities and that we should listen to young people about the activities they wanted and help them to set up peer-led projects.

### ***Children and young people's voices***

“Everyone should have respect – if they do bad things they should be forgiven and have a chance to put it right”.

“Young people suffer prejudice because of people’s previous experience of young people”.

“There is not as much respect shown to young people, our opinions are pushed aside”.

“The way youths are treated make it harder to become a responsible member of society”.

### ***Adults' voices***

“They did build a skate park but some children won’t let others in there”

## 2. What the data tells us

### *Citizenship*

- Between 20% and 30% of young people participate in some form of volunteering.
- A total of 533 children and young people took part in the Duke of Edinburgh award scheme in 2009.
- Approximately 1,000 Year Five pupils each year take part in a programme of visits and debates in the States Chamber.

### *Youth offending*

- The proportion of known offenders who are under 18 year old is currently around 23% (2009 figures)
- Offending rates by 10 – 13 year olds in Jersey are very low and have not changed significantly in the last five years. Offending rates by 14 – 17 year olds show a downward trend over the last five years.
- Less than 35 persistent offenders were responsible for nearly half of the 660 recorded crimes committed by young people in 2009.
- The Youth Action Team provides trained appropriate adults to attend police stations whenever a young person is in custody and requires support. Between January and September 2010 there were 54 of these requests and 7 requests to provide an appropriate adult in youth Court.

## 3. What we are doing and planning

### *Children's Rights*

The Human Rights (Jersey) Law 2000 was brought into forces in 2006. This law implements the Council of Europe's Convention on the Protection of Human Rights. In addition, the States of Jersey has committed to work towards compliance with United Nations Convention on the Rights of the Child 1989.

### *Citizenship*

Young people are given a number of opportunities to participate in citizenship activities both through the schools' curriculum, the Youth Service and organised community activities such as scouting, brownies and guides. The Education, Sport and Culture Department works with the States Greffe to deliver a programme of visits for children to the States Chamber each year where they are given the opportunity to participate in a debate.

The Jersey Youth Service has a pivotal role to play in enabling young people to gain the skills and confidence to become active citizens and involve them in various projects including:

- young worker training. Over 60 young people aged 14 -17 years have undertaken training and are now volunteering regularly in their local Youth Centre
- the Youth Bank Jersey, where 12 young people age 12 – 18 years have trained to be ‘Grant makers’ and are responsible for agreeing grants of up to £500 for other groups of young people in Jersey
- the Duke of Edinburgh’s Award which has over 400 young people currently involved
- ‘On 2 Wheels’, an accredited course run by the Youth Service in schools, with riding skills, road safety and maintenance as part of the course content to encourage young people to be more responsible when riding motor bikes and scooters.

### **Youth Offending**

Offending by children and young people is no more prevalent in Jersey than elsewhere and it is not increasing. Very few commit serious offences, and the majority who commit minor offences grow out of offending very quickly.

Offending behaviour is, however, more obvious on a small Island, more likely to attract an official response or sanction and more likely to generate public and political disquiet.

Many of the issues affecting young people in our society, such as the use and availability of alcohol, impact disproportionately on young offenders. Recent analysis of known persistent young offenders in Jersey highlights the disadvantages they face:

- all came from problematic family environments. Domestic violence was widespread; alcohol abuse was common; parenting was inconsistent with limited positive involvement from fathers and mothers were often under stress.
- all had histories of suspension or truancy from school; had been in contact with social services and been in residential care at some point.
- some self-harmed and many had mental health problems, anger issues or abused alcohol.

The opportunity for these children and young people to have a positive life experience is compromised by their circumstances and their needs. To be effective our youth justice system requires all services and agencies to work together to provide effective solutions for children with high levels of social need.

A comprehensive review of youth justice<sup>11</sup> has been undertaken as part of this Strategic Framework. The review team included academics and practitioners from Jersey and other jurisdictions to ensure local knowledge whilst also providing strong external scrutiny. The review highlighted a number of key issues:

- There are many strengths in the ways that Jersey already responds to children who break the law including: Parish Hall enquiries; restorative justice; effective supervision by the Probation Service; the Youth Service and the emerging problem-solving focus of our Youth Court.
- The small number of children and young people who cause our courts the most concern have complex needs. Whilst their offending is persistent it is not necessarily always serious and can result from their existing involvement in the “system” (for example, relatively minor misbehaviour resulting in prosecution because it takes place in a residential children’s home rather than a private home).

---

<sup>11</sup> Youth Justice in Jersey: Options for Change: August 2010

- The Howard League for Penal Reform concluded in 2007 that, whilst levels of offending are no higher in Jersey than elsewhere our use of custodial remand<sup>12</sup> is. It is important to note however that the remand situation in Jersey is not necessary directly comparable with the UK.
- The availability of secure facilities in the Island creates particular pressures including: mixing children and young people on remand with those who are sentenced; mixing those held for their own welfare and safety with those held because they committed an offence; the Young Offenders Institution being an inappropriate environment for 15 year olds; female young offenders serving custodial sentences in the adult female prison.

The review makes a number of far reaching recommendations. Central to these is the recognition that the Island's youth offenders are "children first and offenders second". The complex needs of these children must be met by the community if offending behaviours are to be successfully addressed. Key recommendations include:

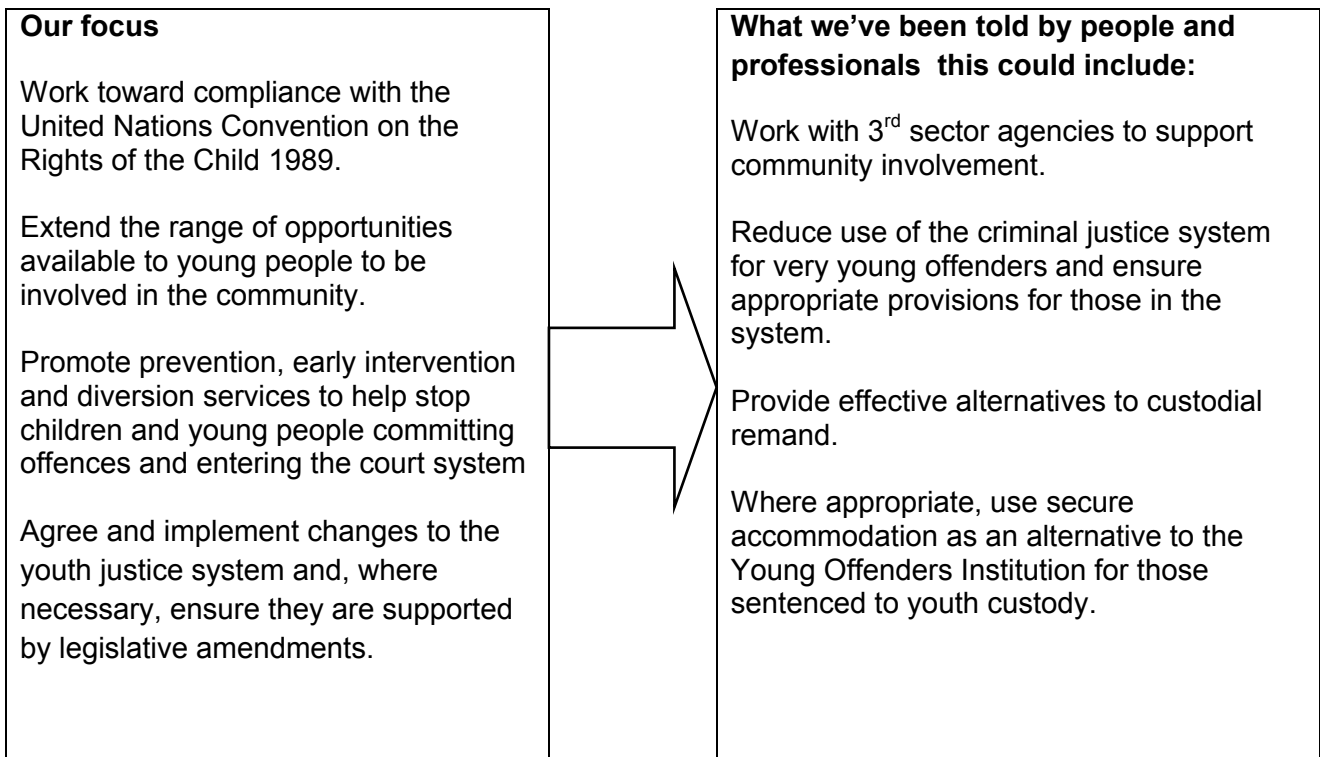
- raising the age of criminal responsibility from 10 to 12 years
- ensuring that alternatives to custodial remand are supportive and realistic
- the Youth Court, as opposed to Royal Court, to deal with all offenders under 17 years old with the exception of those who have committed a grave crime. No public access to be permitted to the Royal Court when a young person stands accused
- broadening youth detention options to include using secure children's accommodation in the place of the Young Offenders Institution if appropriate
- using voluntary methods, such as restorative justice and cautioning wherever possible.

---

<sup>12</sup> Custodial remand is when a child or young person is deprived of their liberty pending appearance at court.

## 4. Focus for future development

We propose, in the first instance, to focus on the following developments. We believe these will help ensure that children and young people act, and are perceived to act, in a responsible manner.





# Have a voice and be heard

---

*We value the contribution that children and young people make. We will work to support them as active citizens and provide opportunities for them to be involved in the development of services or issues that affect their lives.*

## 1. What you told us

37% of young people want more of a say in services that affected them, and in changing the law.

They think the development of this Framework is important, and some have volunteered to help shape its implementation. They propose to develop a poster to convey to all children and young people what we are trying to achieve.

### ***Children and young people's voices***

"Big people should come and talk to us".

"We feel like a little echo in the background because nobody seems to listen".

"Managers of services need to listen to young people directly".

"Children in care need a spokesperson".

"There should be a young peoples forum so we can have a voice in a calm way".

### ***Adults' voices***

"I tell them to be themselves and to make sure they have a voice – they do at home but not sure they do at school"

## 2. What the data tells us

- Whilst a number of services have their own data providing feedback about their service, we have little baseline data about children's and young people's voices.
- 57% of 15-16 year olds believe that their parents like to hear their ideas.
- 51% of children and young people believe their teachers listen to them at school as part of their learning.

## 3. What we are doing and planning

In 2007 Jersey lowered the age of electoral voting to 16 years old (which was passed by a narrow majority in the States). It is now one of few jurisdictions (including Brazil and the Isle of Man) that has a voting age of less than 18 years of age. Jersey's voting age offers 16 – 18 years an opportunity to participate in the democratic process and potentially influence factors that affect them. Other existing forms of youth participation include:

- schools councils and groups linked to specific services
- the *Virtual Learning Environment* and regular questionnaires, which have enabled consultation with school age children on a range of issues
- Island-wide surveys such as the Jersey Annual Social Survey and the Health Related Behaviours Questionnaire.

In addition the Jersey Youth Service, which has an island wide network of 16 youth projects, has a clear and demonstrable role in enabling young people to have a voice and influence their local communities. It actively encourages young people to become involved in shaping and developing their Youth Project by encouraging young people to:

- train as 'Young Workers' and volunteers at their local Youth Project
- take part in peer reviews of other Youth Projects
- undertake the 'Brighter Buildings survey' of their Youth Project, suggesting what improvements could be made
- take part in the Connect Survey to say what they think of their local Youth Project and of the Youth Service as a whole
- become committee members of their local youth project.

The Youth Service has also developed various projects which target hard-to-reach, vulnerable or disadvantaged young people.

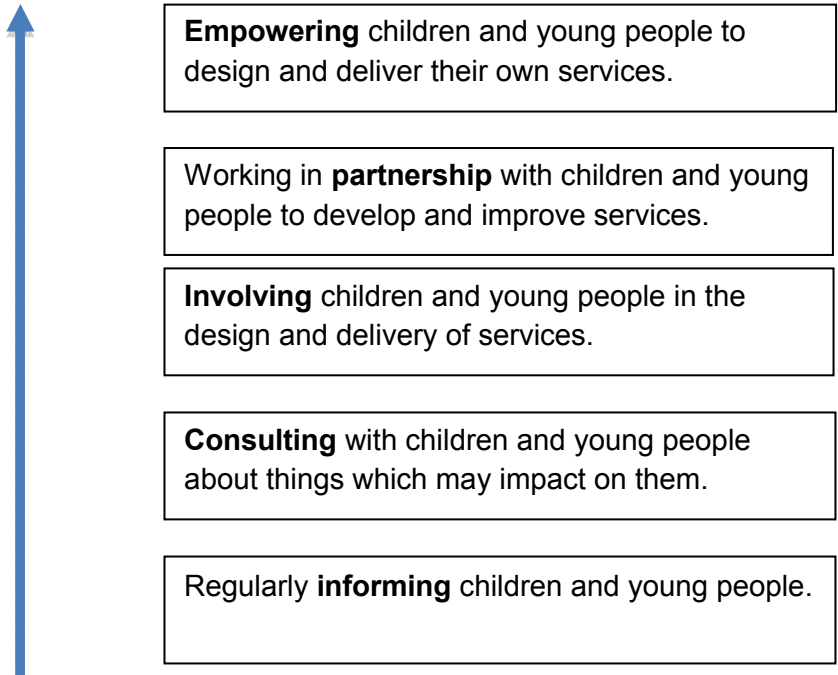
- The Street Based Youth Work team working with young people who are not attracted to existing youth provision.
- Following a service review in 2008, the Youth Service has also begun to work with lesbian, gay, bisexual or transgender young people in Jersey, offering support and promoting wider understanding and awareness.

- The Youth Inclusion Project provides access to youth service provision for young people with a disability.

This work has led to the Youth Service taking a lead in establishing a Youth Forum for Jersey, which will provide a 'voice' for all young people.

Initiatives such as these provide a springboard on which to develop a coherent approach, based on the "Hear by Right"<sup>13</sup> and "You're Welcome"<sup>14</sup> standards for the participation of children and young people in services and policies that affect their lives. We plan to develop a joint participation strategy, which will enable children and young people to participate at a number of levels:

### ***The ladder of participation***

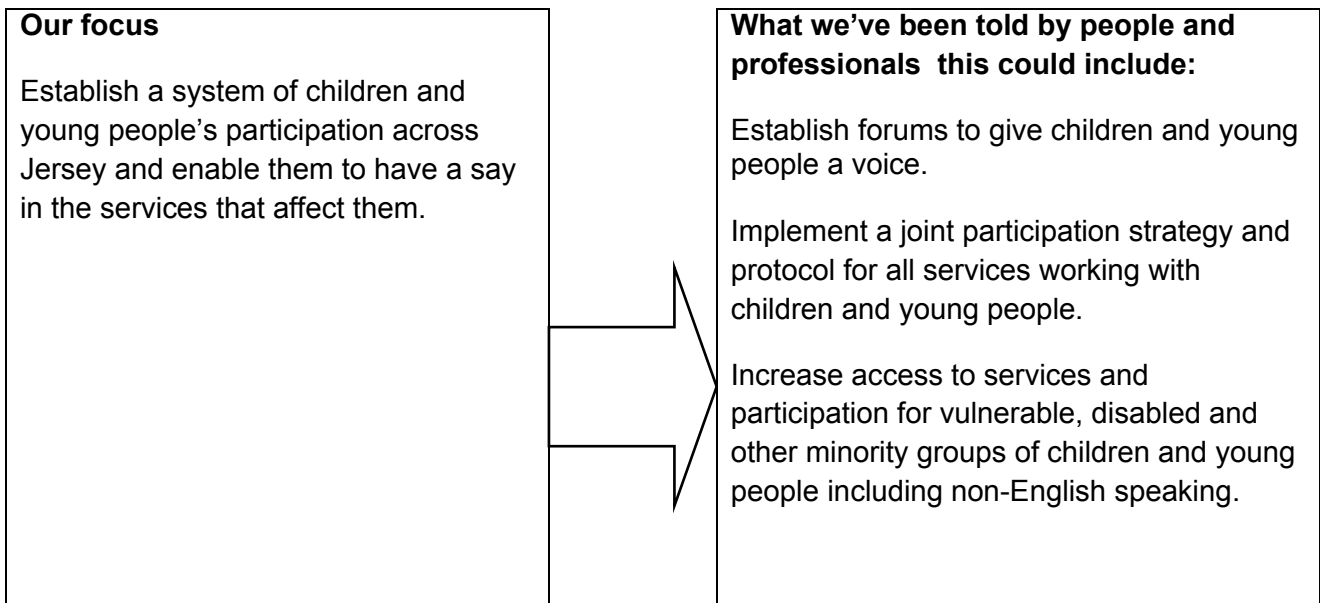


<sup>13</sup> "Hear By Right", Badham and Wade, NYA, 2003

<sup>14</sup> "You're Welcome Quality Criteria", Department of Health (UK), 2005

## 4. Focus for future development

We propose, in the first instance, to focus on the following developments. We believe these will help children and young people to have a voice and be heard.



# Move confidently into adulthood

---

*We want children and young children to grow into confident, fulfilled adults. We will work to reduce the barriers that can make the transition into adulthood harder for some.*

## 1. What you told us

Our consultation highlighted a number of issues impacting on young people as they move into adulthood:

- the high cost of living
- a lack of housing for young people
- the lack of independent travel
- the high cost of university places for Jersey residents
- a lack of job opportunities for young people returning from university.

### **Children and Young people's voices**

"I don't think there are many jobs".

"The cost of living is so high".

"Housing is a problem".

"They said they'd take away my benefits because being a nail technician isn't proper training"

### **Adults' voices**

"We got lots of help when she was at Mont l'abbe but then it just stopped. Like her disability was meant to disappear now she'd stopped going to school"

## 2. What the data tells us

- 1,026 young people took part in the Trident work experience scheme.
- 55 young people took part in the Institute of Directors Work Shadowing Scheme last year and approximately 1000 per year participate in enterprise activities, using people from local businesses as mentors.
- One in five 14-15 year olds have a regular paid job (mostly babysitting). This has decreased from 39% in 2000.
- Only a small percentage of young people are known to move out of education or training into employment after GCSE (in 2009 2% moved into employment with an additional 2% seeking employment).
- After A levels only 13% moved into employment with an additional 1% actively seeking employment.
- 1,290 people in Jersey are unemployed and actively seeking work. Approximately 25% (330 people) were aged 16 – 19 years of which 100 were on the Advance to Work Scheme. Those aged 16 -19 years form the biggest single cohort of unemployed people actively seeking work.
- 70% of unemployed 16 – 19 year olds, who are actively looking for work, claim income support.
- 67% of 14-15 year olds say they will continue in full time education.
- The finance sector accounts for 53% of economic activity compared to 3% tourism and 1% agriculture. 24% of those in employment work in finance or legal services, 8% in catering or tourism and 2% in manufacturing.
- Transition information for Years 9 – 14 in 2006 indicated that 83 young people are likely to move in to adult services over the next 5 years.
- 120 young people under 25 years received a service from Jersey Employment Trust over the last year.

## 3. What we are doing and planning

### ***Employment and Training***

Jersey's economy is dominated by the financial and legal services industries. Other traditional industries such as agriculture, manufacturing and tourism are shrinking in comparison. This has an impact on the diversity of employment opportunities for young people leaving education and entering the job market.

The Jersey Skills Board aims to ensure that the Island's population, including young people, have the right skills for employment and supporting diversification in the Island economy. Activities delivered by the Board and its partner organisation include:

- Advance to Work, which provides unemployed 16 – 19 year olds with three months work experience, work training and a personal mentor
- undergraduate internships providing work placement opportunities for students during the summer holidays. In 2010 over 60 students undertook internships in areas such as civil engineering, marketing, finance, environmental research and IT
- an Apprenticeship Scheme, currently under review, which enables employers to provide on and off-the-job training so that young people can gain qualifications across a range of trades such as building, catering and hairdressing
- research and investment in locally delivered higher education schemes in strategically important areas – finance, IT, Childcare studies
- a pilot vocational option for 14+ year olds
- careers advice and guidance to over 4000 young people each year. Services include: school careers sessions for 14 – 18 year olds; the *Trident* work experience scheme for 15 - 16 year olds and opportunities for final year pupils to participate in schemes such as Young Enterprise, the Institute of Directors and the Chartered Institute of Marketing work shadowing schemes
- the Prince's Trust and the Youth Service provide a 12-week personal development programme every 6 months, for 15 young people aged 16 to 25 years who are unemployed, may not have achieved at school, have been in care or have been involved with crime and/or drugs. At the end of the programme most participants find a job or access a training course.

The current ongoing review of Income Support includes a review of employment services to look at a range of issues including the provision of a personal advisor service and training.

## **Housing**

The Supported Housing Group works to provide social housing with wrap around support packages for vulnerable people, including young people leaving care and those with mental health, addiction or other problems. It aims to help them live more independent lives. The Group has supported 52 young people, aged 18 – 25 over the last five years. The Housing Department's Assisted Living Team also supports young people to obtain bed-sit accommodation or take over tenancy of a family home in the event of their parents leaving or dying.

At present young people who wish, or need, to live independently of their parents or carers cannot access Housing Department social housing on the grounds that they have a low income, or that they are in receipt of income support. Under existing criteria they would only be housed if they are 18 years old and over and:

- had a dependent child or a sibling for whom they are responsible or
- were referred via the Supported Housing Group.

The access criteria for social housing is to be revised which potentially make it more readily available to young people who are not currently eligible.

At present some vulnerable 16 – 18 year olds , when it is deemed that they should live independently, are housed in hostel accommodation by Social Services, whilst the Causeway Association provides sheltered accommodation for woman who have unplanned pregnancies or single mothers with children aged 2 or under.

## **Benefits**

16 – 19 year olds are the biggest single group of unemployed people in Jersey, closely followed by 20 – 24 year olds. 70% of young people in these groups are in receipt of income support which provides them with financial assistance whilst they look for employment, or undertake some form of training or education that supports them into employment. Consultation with young people suggested that some believe that the training and education options are too limited, although additional research would be needed to assess the extent to which this is a problem.

Whilst eligible 16 - 25 years can claim income support for day-to-day expenses, most are not entitled to the accommodation component which makes a contribution towards the cost of rent. In some cases the cost of rent is provided. These include:

- a young adult who is responsible for and living with a child
- a care leaver
- a young person who has been financially independent for at least a year previously
- other young adults who are unable to remain in the family home.

Young people with disabilities can make their own Income Support claim when they reach school leaving age. This ensures that they can receive financial support in their own right.

Existing income support arrangements are currently being reviewed. This will further our understanding of the impact that the benefits system has on young people.

## **Looked After Children leaving care**

There is an average of eight young people leaving care each year on their eighteenth birthday. A dedicated leaving care team assists care leavers in their transition to independence. The team works with between 30 and 50 young people at any one time aged 15 to 24 years providing personal, practical, social and emotional support, advice and guidance. Care leavers moving into adulthood face a number of challenges and are at high risk of homelessness, unemployment, substance misuse and mental health problems. A project aimed at designing a blueprint for future service delivery for these young people and other vulnerable 16 to 25 year olds has been set up as part of the response to the Williamson report<sup>15</sup>.

Additionally a refurbishment of a local farmhouse building will provide six bed-sitting units to accommodate young people leaving care.

## **Young People with additional needs**

For disabled young people and those with additional needs, the transition into adulthood is far more complex. Not only do they have all the challenges of growing up but also significant changes to their support arrangements, with a whole array of different professionals involved. Jersey's Transition Planning Policy sets out existing processes including early consultation with Adult Social Services to identify those likely to need ongoing support. Work is taking place to support development of clear person-centred transition plans with associated budgets.

---

<sup>15</sup> Andrew Williamson. Inquiry into Child Protection Services in Jersey, Health and Social Services Dept, 2008.



*A Draft Strategy for Inclusive Vocational Day Services and Employment for People with a Learning Disability and People on the Autistic Spectrum* has been developed to promote choice through the provision of a wider range of employment opportunities. The aim is to ensure that no person with a learning disability or on the autistic spectrum wishing to work is excluded from pursuing employment opportunities.

A number of organisations such as the Jersey Employers Network on Disability and Jersey Employment Trust (JET) work with disabled people to maximise their potential to gain and retain paid employment.

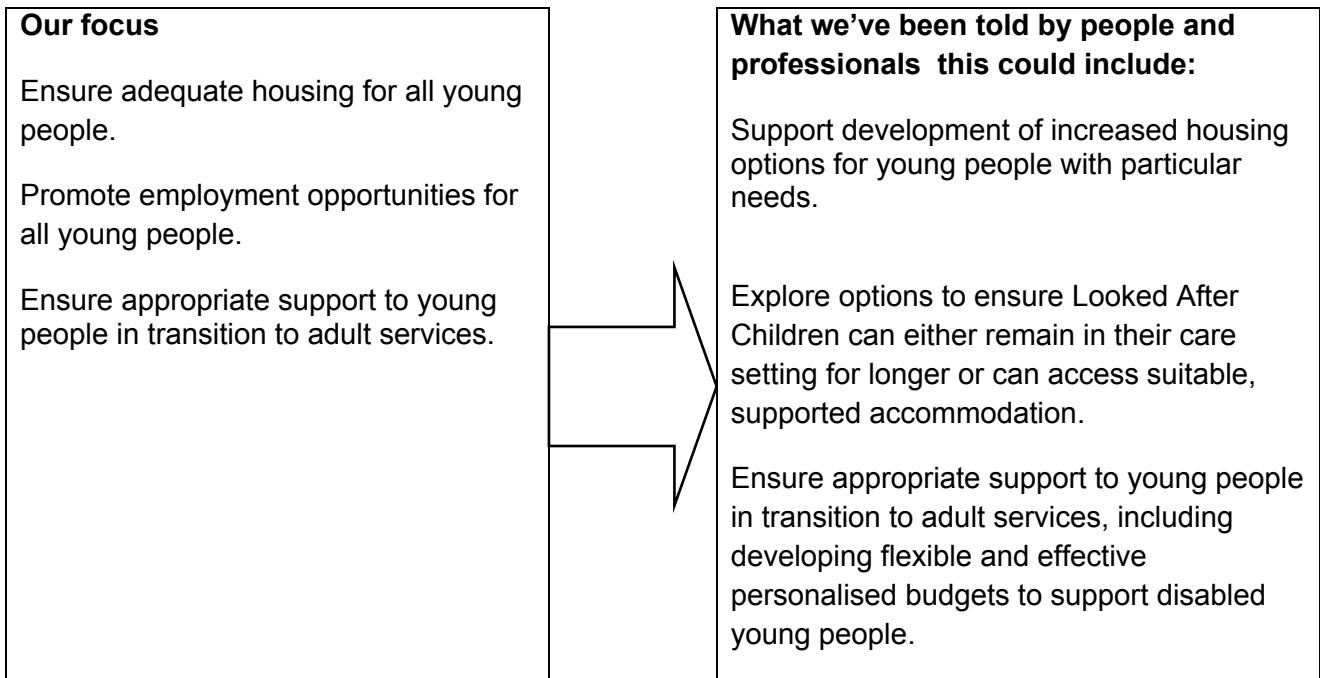
In 2009 JET introduced a Transition Service whose remit is to link with young people with disabilities from age 14 onwards. The Team supports young people by working in partnership with them, their school/college, parents/carers, employers and other services in order to help them work towards and realise their future employment opportunities.

A new *Included* 6 month personal development programme for young people with special needs aged 17-25 years has been developed. Young people develop their social and life skills, gain employment skills and make friends and build self-confidence. As part of the programme they also go on an outward-bound residential course in the UK.

The Social Security Department is currently preparing plans for a long-term care benefits that will be available to all aged 18 years and above.

## 4. Focus for future development

Based on an assessment of the issues that affect children and young people's ability to grow confidently into adulthood we propose to focus, in the first instance, on the following developments:

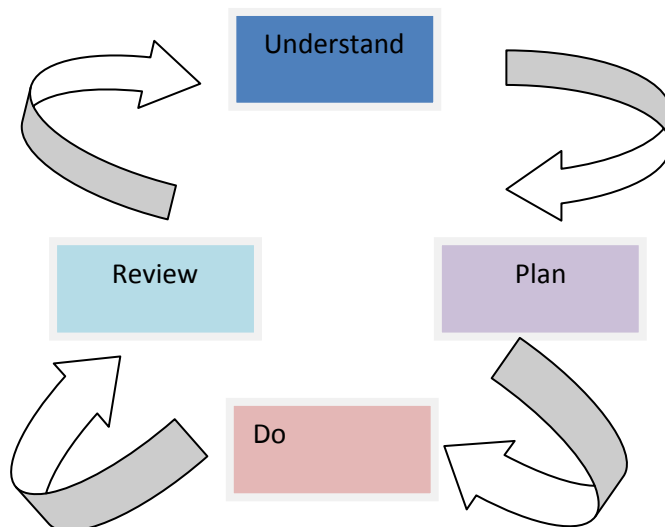


# **Section 3: Making it happen**

# Planning services

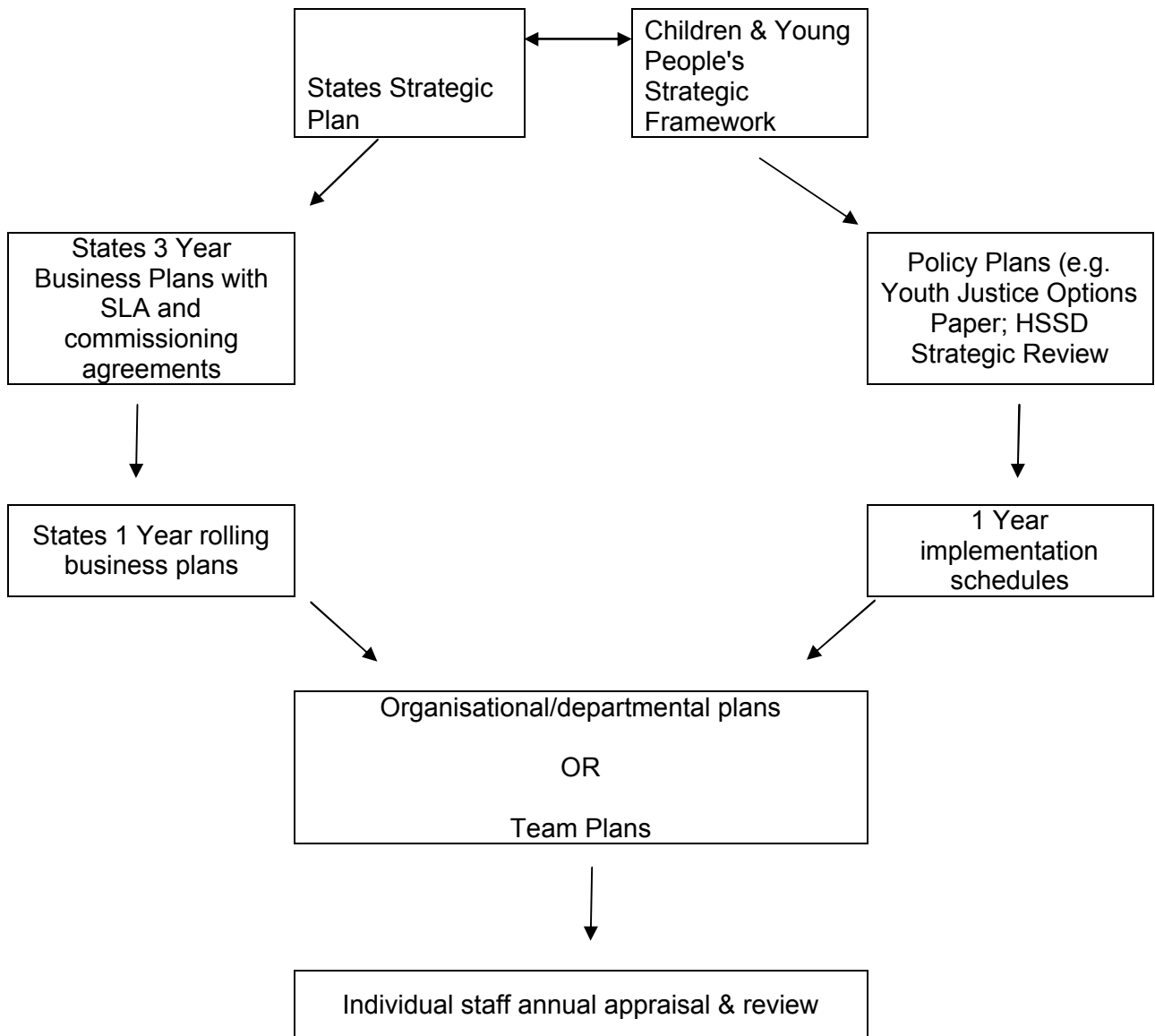
*We want children and young people to benefit from affordable, effective services that deliver the best outcomes for them. We will work together, across organisational boundaries, to identify priorities and commission and monitor services that are best able to meet need.*

The Strategic Framework identifies seven key outcomes and a proposed future development focus for each of those outcomes. The work that needs to be done to deliver these will be outlined in a series of seven annual implementation schedules, one schedule per outcome. The schedules will be developed using an evidence-based planning and monitoring process of Understand, Plan, Do and Review.



Understand	Plan	Do	Review
Why is this important? What is needed? What outcomes do we want to achieve?	Who will do the work? What will it cost? How will it be funded?	Do the work to meet the need.	How well did we meet need? Is something missing? What else do we need to know?
Will include: <ul style="list-style-type: none"> <li>joint strategic needs analysis</li> <li>auditing and reviewing service delivery, its effectiveness and impact</li> <li>consulting with young people, families and professionals</li> <li>learning from the findings of service inspections and reviews</li> </ul>	Will include: <ul style="list-style-type: none"> <li>developing a co-ordinated planning structure with identified resources</li> <li>developing a trained, highly skilled Island workforce that shares skills and knowledge</li> </ul>	Will include: <ul style="list-style-type: none"> <li>developing new ways of working</li> <li>commissioning and de-commissioning services</li> <li>re-directing funding and resources to priority services based on need</li> </ul>	Will include: <ul style="list-style-type: none"> <li>data collection</li> <li>monitoring and reviewing quality</li> </ul>

The schedules will sit alongside existing planning structures in order to ensure resources and operating priorities are co-ordinated.



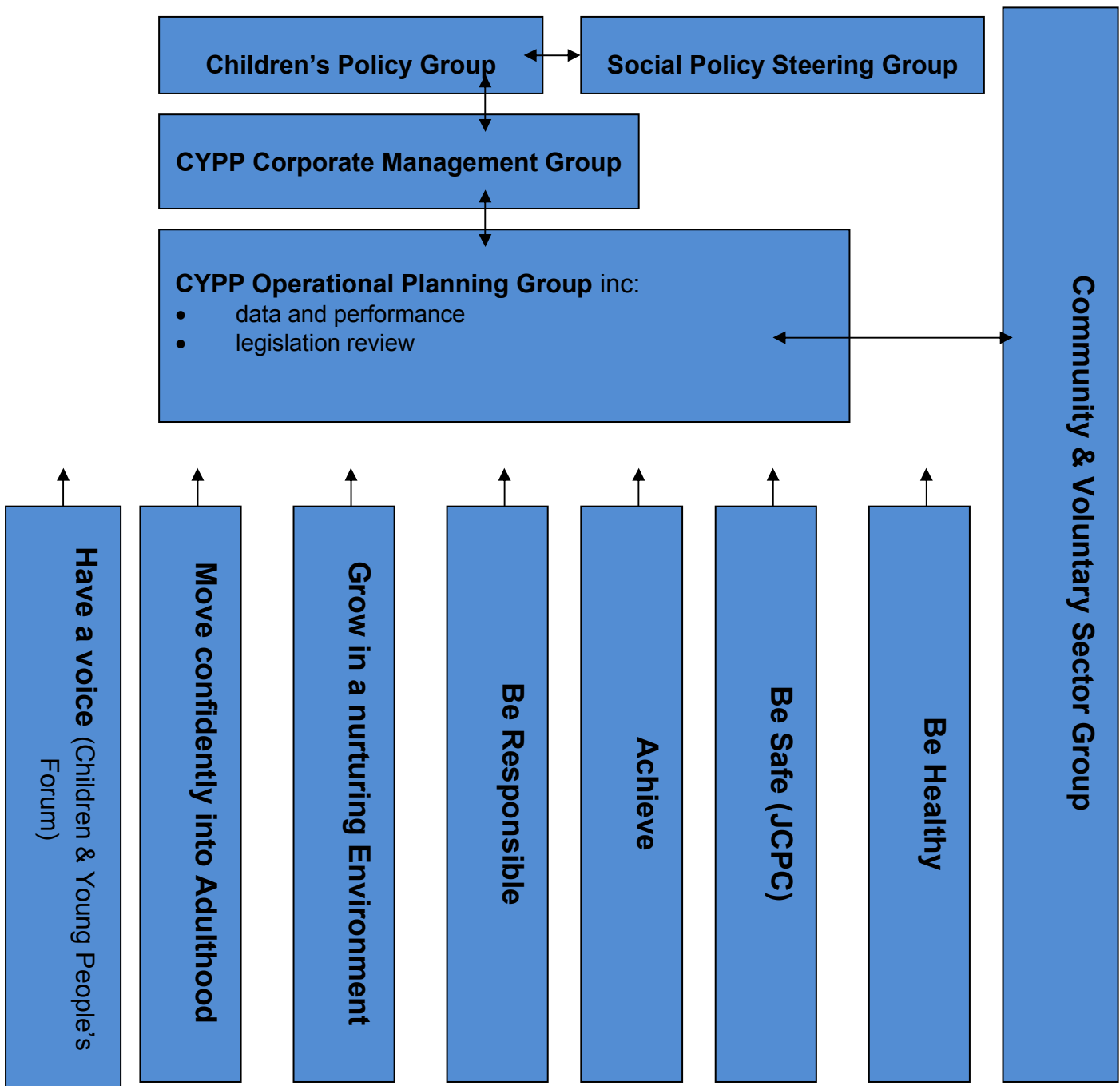
# Governance, monitoring and commissioning

A new governance, monitoring and commissioning structure will be established to oversee delivery of the Strategic Framework. Its function will be to:

- develop implementation schedules for each of the seven outcomes
- commission and decommission services
- identify and commit resources (people; time; knowledge; money) from existing individual budgets and staffing contingents
- establish robust data sets for benchmarking and comparative purposes
- drive forward changes in policies, practices and legislation.

Partners will include:

- voluntary sector representatives
- States Departments and officials
- service providers including GP's and private sector companies
- young people



### **Community & Voluntary sector group**

#### *Who are they?*

An independent umbrella group of voluntary sector organisations that:

- represent the interests of the sector
- provides developmental support and advice to organisations operating in the sector
- links to emerging regulatory work and/or forum
- has a special interest in the delivery of services to children and young people.

#### *What will they do?*

Provide information, advice and ideas to the Operational Planning Group and Outcome Sub-groups and nominate a representative for the Operational Planning Group. As direct service providers they will contribute to the range of services delivered in our community.

### **Children and Young People's Forum**

#### *Who are they?*

A group of children and young people receiving services from universal, targeted and specialist services. The Forum will link to other children and young people's groups and councils across Jersey to ensure a representative voice for children and young people.

#### *What will they do?*

This group will advise on the 7<sup>th</sup> key outcome: *Have a voice and be heard*. They will provide information, advice and ideas to Operational Planning Group and Outcome Sub-groups and help hold them to account for delivering the Strategic Framework.

### **Children's Policy Group**

#### *Who are they?*

The Ministers for Health & Social Services, Home Affairs, Education, Sports & Culture with support from their Departmental Chief Officers, the Chief Probation Officer and the Chief of Police.

#### *What will they do?*

Ensure the delivery of the Strategic Framework across all States' Departments, providing political leadership and representing the needs and interests of all Jersey's children and young people in the States of Jersey.

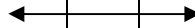
### **Social Policy Steering Group**

#### *Who are they?*

The Chief Minister with the Ministers for Health & Social Services, Home Affairs, Education, Sports & Culture, Social Security and Housing and a representative of the Committee de Connetable.

#### *What will they do?*

Oversee development of social policy and manage broader social policy agenda on behalf of the Councils of Ministers.



### **Children and Young People's Corporate Management Group**

#### *Who are they?*

Departmental Chief Officers and Directors of Finance with budgetary responsibility for services for children and young people, including services delivered by States Department and services commissioned from external suppliers.

#### *What will they do?*

The Corporate Management Group will review and assess the Operational Planning Group's commissioning and delivery proposals. They will ensure alignment of departmental and strategic plan objectives and spending priorities to these proposals prior to framing joint recommendations for adoption by the Children's Policy Group.

### ***Children and Young People's Operational Planning Group***

#### *Who are they?*

Proposed members include representatives of key agencies (e.g. States Departments, charities, the legal profession, schools and GPs). The Operational Planning Group will be supported by:

- a data and performance monitoring group who will develop a common data set
- a legislation review group who will work to ensure that existing legislation, and the legislative review and updating process, provides adequate timely protection to children and young people.

#### *What will they do?*

The group ensures the delivery of the implementation schedules. It analyses what is needed; agrees plans, ensure that the right organisation is able to deliver the right service; reviews the effectiveness of the services; and reports progress to the Children's Policy Group and the Corporate Management Group.

### ***Outcome sub-groups***

#### *Who are they?*

6 thematic sub-groups based around 6 of the 7 key outcomes incorporated into the Strategic Framework (*Be Health; Be Safe; Achieve; Be responsible and respected; Grow in a nurturing environment; Move confidently into adulthood*). These will include representatives of all of the partner agencies delivering the services and actions outlined in the Framework.

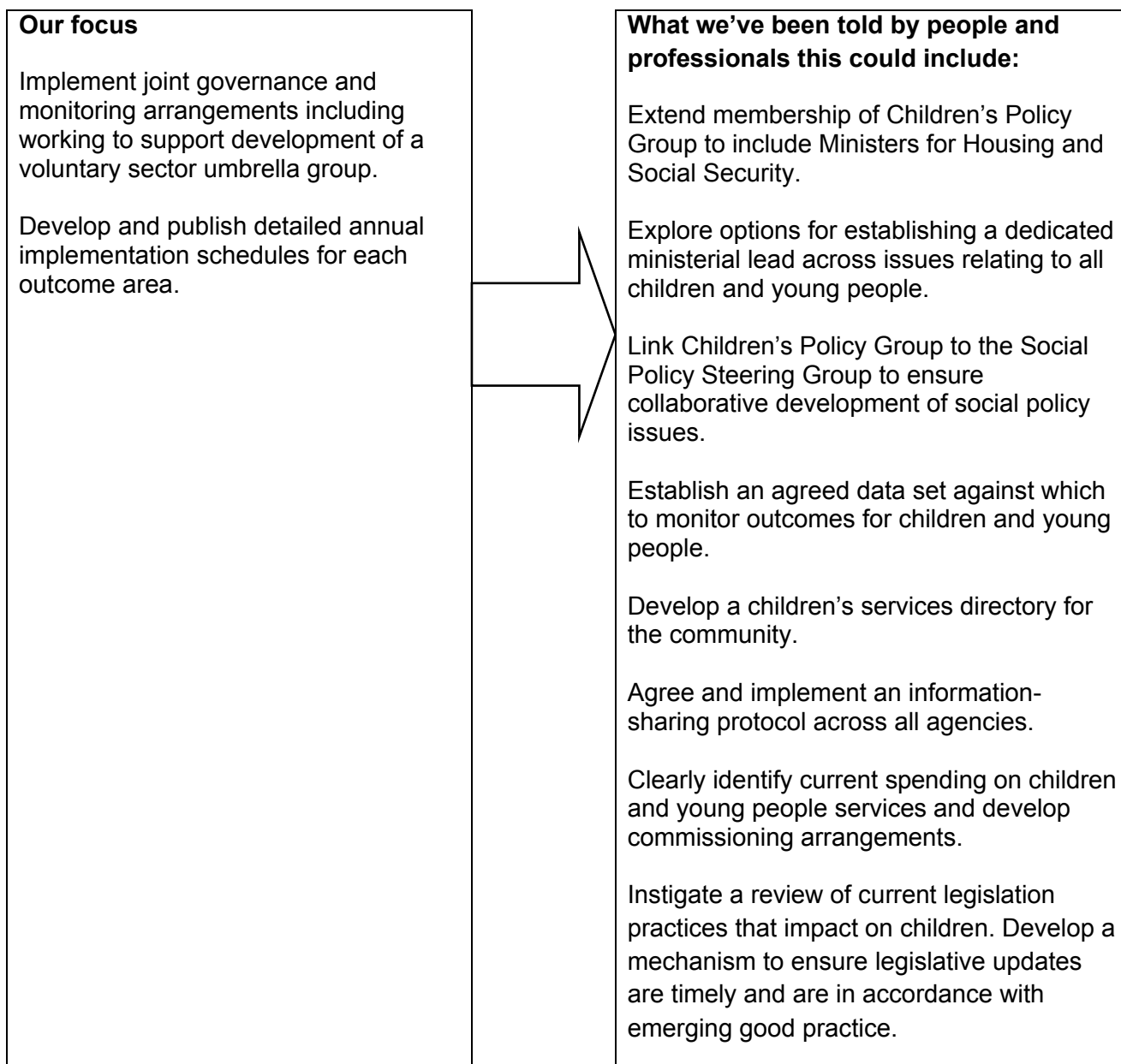
#### *What will they do?*

They are responsible for producing and delivering detailed annual implementation plans and focusing on the development areas identified in the Framework. Each agency member represented will ensure that their organisation delivers their agreed tasks or link with other relevant partner agencies.



# Focus for future development

We propose, in the first instance, to focus on the following developments:



# Glossary of terms and words

---

**A-H Housing categories:** A-H housing is housing that can be leased or purchased by residents with A-H housing qualifications. To gain A-H housing qualifications people must have been resident on the Island for a set number of years (10 – 11 depending on circumstances).

**A&E:** Accident and Emergency Department.

**ACET:** ACET Jersey (AIDS Care Education and Training) is a charity which has been providing professional HIV/AIDS prevention and care services on the Island since 1994.

**ADHD:** Attention Deficit Hyperactivity Disorder. A diagnosis for serious and persistent inattentiveness and / or over-activity and impulsiveness.

**CAMHS:** Child and Adolescent Mental Health Services. These include all services contributing to mental health care of children and young people.

**CAP:** Child Accident Prevention.

**Common Assessment Framework (CAF):** CAF is a single assessment used by all practitioners working with children. It is a mechanism to identify needs and obtain support.

**Commissioning:** The process of meeting identified needs in the most effective and efficient way.

**CEOPS:** Child Exploitation On-Line Protection Centre (CEOPS). A UK centre dedicated to eradicating sexual abuse of children.

**CPG:** Children's Policy Group. Comprising the Ministers and Chief Officers for Health and Social Care, Education and Home Affairs.

**CRB:** Criminal Records Bureau. Undertaking checks to ensure that workers do not have offences which would preclude them from working with children.

**GP:** General practitioner - community doctor.

**ECHR:** European Convention on Human Rights

**EYCP:** Early Years and Childcare Partnership. A multi-agency group set up to improve early years services.

**Income Distribution survey:** The Jersey Income Distribution Survey is an annual survey undertaken by the States Statistic Unit. It describes the average household income and explores inequality indicators for Jersey.

**Independent Board of Visitors:** Independent members of the public who regularly visit Jersey children's home.

**JELLY Clubs:** Jersey Early Learning Literacy Years clubs for parents of young children.

**Jersey Skills Board:** The Jersey Skills Board advises Ministers and oversees the development of skills related initiatives. It includes representatives of Jersey industries and States Departments.

**JCPC:** Jersey Child Protection Committee. A multi- agency forum that brings together the main agencies and professionals responsible for helping to protect children from abuse or neglect.

**JFCAS (Jersey Family Court Advisory Service):** Provides reports to the Royal Court on the best interests of the child in private law proceedings when parents cannot agree on arrangements; acts as Guardian ad Litem in adoption matters; acts as Guardian of children subject to proceedings brought by the Minister in public law proceedings.

**Looked After Children (LAC):** Any child who is in the care of the States of Jersey.

**MAST:** MAST (multi-agency support teams) are teams of social workers providing support services in secondary schools.

**Offender Management Service:** A service responsible for commissioning and delivering offender management services.

**Record of Need:** This record sets out in detail the pupil's special educational needs and the provision to meet those needs.

**PHSE:** Personal, Health and Social Education equips children and young people with the knowledge and skills to deal with a range issues they face as they grow up eg: careers; finance; sex; drugs; nutrition etc.

**Public Protection Unit:** The Public Protection Unit's work includes: a child protection team (dealing with concerns; investigating and prosecuting offenders); a domestic violence unit (working to prevent and reduce domestic abuse); an offender management unit (identification, assessment and management of sex offenders).

**YES:** Youth Enquiry Service - an advice and counselling service provided by the Jersey Youth Service.

**Youth Justice:** The organisations and processes involved in tackling youth offending. The principal aim of the youth justice system is to prevent the offending of children and young people.

# Consultation questionnaire

---

Please answer as many, or as few, of the questions as you want. Send your completed questionnaire by post or email to:

Children and Young People's Strategic Framework  
Health and Social Services Department  
4<sup>th</sup> Floor, Peter Crill House  
Gloucester Street  
St Helier  
JE1 3QS

Email: [childrensplan@health.gov.je](mailto:childrensplan@health.gov.je).

**Closing date of consultation:** 15 February 2011

## 1. The vision and four principles (page 12)

*Our vision: We want all children and young people to grow up in a safe, supportive Island community in which they achieve their full potential and lead happy, healthy lives.*

A. How much do you agree or disagree with the vision (please tick one box)?

<input type="checkbox"/>	Strongly agree
<input type="checkbox"/>	Slightly agree
<input type="checkbox"/>	Slightly disagree
<input type="checkbox"/>	Strongly disagree
<input type="checkbox"/>	Not sure

B. Thinking about the vision, is there anything else we should...

i. add in? (please tell us what and why):

----------

ii. take out? (please tell us what and why):

----------

C. Overall, how much do you agree or disagree with principle 1 "the welfare of all children is a principle consideration"

<input type="checkbox"/>	Strongly agree
<input type="checkbox"/>	Slightly agree
<input type="checkbox"/>	Slightly disagree
<input type="checkbox"/>	Strongly disagree
<input type="checkbox"/>	Not sure

D. Overall, how much do you agree or disagree with principle 2 "a focus on early intervention in order to prevent problems developing and escalating, thus reducing the need for high cost targeted and specialist services"?

<input type="checkbox"/>	Strongly agree
<input type="checkbox"/>	Slightly agree
<input type="checkbox"/>	Slightly disagree
<input type="checkbox"/>	Strongly disagree
<input type="checkbox"/>	Not sure

E. Overall, how much do you agree or disagree with principle 3 “services must be designed and commissioned based on need, impact, effectiveness, efficiency and value for money”?

	Strongly agree
	Slightly agree
	Slightly disagree
	Strongly disagree
	Not sure

F. Overall, how much do you agree or disagree with principle 4 “we must work in partnership across sectors to ensure best use of knowledge, expertise and resources”?

	Strongly agree
	Slightly agree
	Slightly disagree
	Strongly disagree
	Not sure

G. Thinking about the four principles overall, is there anything else we should...

i. add in? (please tell us what and why):

ii. take out? (please tell us what and why):

## **2. Be healthy (pages 14 to 22)**

*We want children and young people to enjoy good health - physically, mentally and emotionally. We will work to improve their understanding of health issues, promote their wellbeing and improve services.*

A. Thinking about what Jersey already does to support children and young people to be healthy, is there anything we should be doing more of? (please tell us what and why):

B. Thinking about what Jersey already does to support children and young people to be healthy, is there anything we should be doing less of? (please tell us what and why):

C. Thinking about what Jersey already does to support children and young people to be healthy, is there anything we should stop doing? (please tell us what and why):

D. Thinking about the suggestions for the focus for future development (see page 22), is there any suggestions that you don't agree with? (please tell us which and why):

E. Do you have any other suggestions? (please tell us what and why):

### **3. Be safe** (pages 23 to 28)

*We want to protect children and young people in our community and help keep them safe from harm. We will work to reduce the risks they face and help develop protective behaviours*

A. Thinking about what Jersey already does to support children and young people to be safe, is there anything we should be doing more of? (please tell us what and why):

B. Thinking about what Jersey already does to support children and young people to be safe, is there anything we should be doing less of? (please tell us what and why):

C. Thinking about what Jersey already does to support children and young people to be safe, is there anything we should stop doing? (please tell us what and why):

D. Thinking about the suggestions for the focus for future development (see page 28), is there any suggestions that you don't agree with? (please tell us which and why):

E. Do you have any other suggestions? (please tell us what and why):

### **4. Achieve** (pages 29 to 34)

*We want all children and young people to realise their aspirations and achieve their full potential. We will work to improve the opportunities available for all including those with additional needs.*

A. Thinking about what Jersey already does to support children and young people to achieve, is there anything we should be doing more of? (please tell us what and why):

B. Thinking about what Jersey already does to support children and young people to achieve, is there anything we should be doing less of? (please tell us what and why):

C. Thinking about what Jersey already does to support children and young people to achieve, is there anything we should stop doing? (please tell us what and why):

D. Thinking about the suggestions for the focus for future development (see page 34), is there any suggestions that you don't agree with? (please tell us which and why):

E. Do you have any other suggestions? (please tell us what and why):

**5. Grow in a stimulating, nurturing environment (pages 35 to 43)**

*We want all children and young people to feel cared for, nurtured and inspired by the community around them. We will work to improve the support provided to families, and others who care for children, to enable this to happen.*

A. Thinking about what Jersey already does to support children and young people grow in a stimulating, nurturing environment, is there anything we should be doing more of? (please tell us what and why):

B. Thinking about what Jersey already does to support children and young people grow in a stimulating, nurturing environment, is there anything we should be doing less of? (please tell us what and why):

C. Thinking about what Jersey already does to support children and young people to grow in a stimulating, nurturing environment is there anything we should stop doing? (please tell us what and why):

D. Thinking about the suggestions for the focus for future development (see page 43), is there any suggestions that you don't agree with? (please tell us which and why):

E. Do you have any other suggestions? (please tell us what and why):

**6. Be responsible and respected (pages 44 to 48)**

*We want children and young people to act responsibly and to be respected by others. We will work with them and the wider community, including those involved in youth justice, to help engender mutual respect and understanding.*

A. Thinking about what Jersey already does to support children and young people to be responsible and respected, is there anything we should be doing more of? (please tell us what and why):

B. Thinking about what Jersey already does to support children and young people to be responsible and respected, is there anything we should be doing less of? (please tell us what and why):

C. Thinking about what Jersey already does to support children and young people to be responsible and respected, is there anything we should stop doing? (please tell us what and why):

D. Thinking about the suggestions for the focus for future development (see page 48), is there any suggestions that you don't agree with? (please tell us which and why):

E. Do you have any other suggestions? (please tell us what and why):

**7. Have a voice and be heard (pages 49 to 52)**

*We value the contribution that children and young people make. We will work to support them as active citizens and provide opportunities for them to be involved in the development of services and issues that affect their lives.*

A. Thinking about what Jersey already does to support children and young people to have a voice and be heard, is there anything we should be doing more of? (please tell us what and why):

B. Thinking about what Jersey already does to support children and young people to have a voice and be heard is there anything we should be doing less of? (please tell us what and why):

C. Thinking about what Jersey already does to support children and young people to have a voice and be heard is there anything we should stop doing? (please tell us what and why):

D. Thinking about the suggestions for the focus for future development (see page 52), is there any suggestions that you don't agree with? (please tell us which and why):

E. Do you have any other suggestions? (please tell us what and why):

**8. Move confidently into adulthood (pages 53 to 58)**

*We want children and young children to grow into confident, fulfilled adults. We will work to reduce the barriers that can make the transition into adulthood harder for some.*

A. Thinking about what Jersey already does to support children and young people to move confidently into adulthood, is there anything we should be doing more of? (please tell us what and why):

B. Thinking about what Jersey already does to support children and young people to move confidently into adulthood, is there anything we should be doing less of? (please tell us what and why):

C. Thinking about what Jersey already does to support children and young people to move confidently into adulthood, is there anything we should stop doing? (please tell us what and why):



D. Thinking about the suggestions for the focus for future development (see page 58), is there any suggestions that you don't agree with? (please tell us which and why):

E. Do you have any other suggestions? (please tell us what and why):

**9. Section 3 (pages 59 to 65)**

*We want children and young people to benefit from affordable, effective services that deliver the best outcomes for them. We will work together, across organisational boundaries to identify priorities and commission and monitor services that are best able to meet need.*

A. Are there any organisations, agencies or groups you think should be part of the process. If so, please tell us their name?

B. Are there any changes you think we should make to the proposed structure? If so, please tell us what and why?

C. Thinking about the suggestions for the focus for future development (see page 65), is there any suggestions that you don't agree with? (please tell us which and why):

D. Do you have any other suggestions? (please tell us what and why):

**10. General questions**

A. Do you want to make any other comments?

B. Is the Strategic Framework document easy to follow? If not, how could we improve it?

**11. About you**

A. Are you.....(please tick one box)

<input type="checkbox"/>	aged 12 or under?
<input type="checkbox"/>	aged 13 to 16?
<input type="checkbox"/>	aged 17 or 18?
<input type="checkbox"/>	aged 19 to 25?
<input type="checkbox"/>	<b>OR</b>
<input type="checkbox"/>	aged 25 or over but not a parent?
<input type="checkbox"/>	a parent (any age)?

B. Are you responding as a representative of an organisation? If so, is that organisation.....(please tick one box)

	a local charity or not-for-profit organisation?
	a local branch of a UK or international charity or not-for-profit organisation?
	a private sector organisation?
	a school or educational establishment?
	a network of organisations?  If so please give name:
	a States Department?  If so please give name:

C. Contact details

Your name:	
Organisation (if relevant):	
Address:	
Email address:	

D. Please note that consultation responses may be made public (sent to other interested parties on request, sent to the Scrutiny Office, quoted in a published report, reported in the media, published on [www.gov.je](http://www.gov.je) etc). Please tick one option as appropriate:

	<input type="checkbox"/> I agree that my comments may be made public and attributed to me.
	<input type="checkbox"/> I agreed that my comments may be made public but not attributed to me.
	<input type="checkbox"/> I don't want my comments made public.