

SCHEDULE 3 - EU Vessels

Jersey Marine Resources Logsheets – Procedures for Completion

1. General

- 1.1 The provision of statistical information is absolutely critical for the management of fish stocks. It is vital when assessing the state of fish stocks and relevance of conservation measures that a policy for a sustainable fishery can be developed and modified with continuous consultation with the fishing industry to lead to an economically stable industry.
- 1.2 In addition to requirements for either an EU paper logbook or electronic logbook/ERS, when fishing in Jersey territorial waters EU vessels holding a Jersey fishing boat licence are also required to complete and submit a logsheet of the vessels daily fishing effort and catches, in accordance with the instructions in this schedule.
- 1.3 A logsheet in the format shown in the Annex to this schedule, shall be completed and emailed to fisheries@gov.je within 48 hours of landing

2. Instructions for completion of logsheets

- 2.1 Entries may be completed electronically or manually by hand.
- 2.2 All sections at the top of the page must be completed for each page submitted.
- 2.3 Date fished – Record date of fishing activity. Eg: 14/08/2021
- 2.4 Area fished – Record the area fished, using the zone codes shown in the chartlet in the Annex. Only fishing effort and catch from Jersey territorial waters should be declared.
- 2.5 If there are insufficient lines for a busy day an additional page should be completed.
- 2.6 The type of gear used should be recorded using the gear codes together with gear details as shown in the following table:

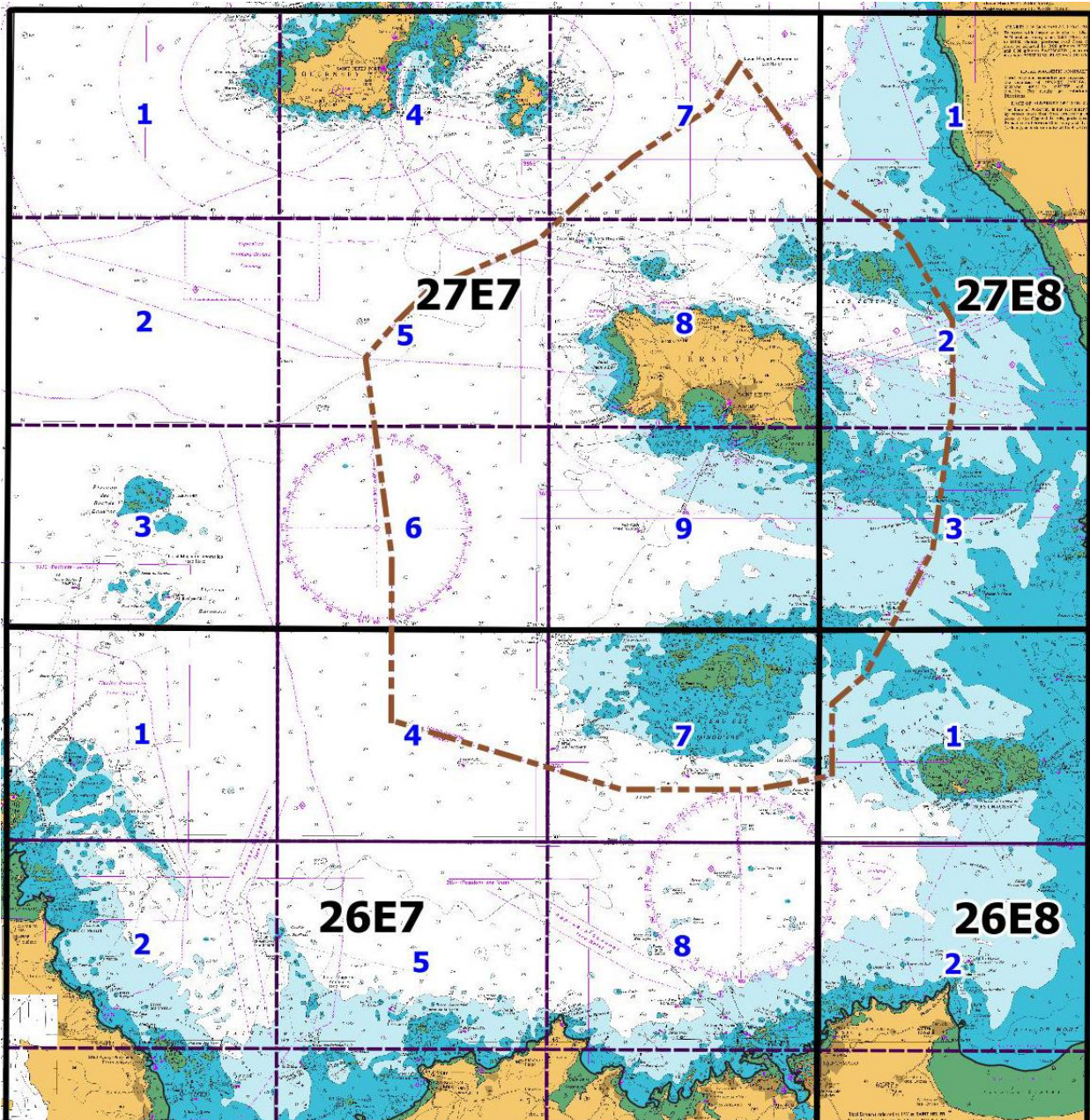
| Type | Gear code | Gear details required |
|-----------------------------------|-----------|---|
| Dredge | DRB | Number of Dredges & Number of tows |
| Otter Trawl - Bottom | OTB | Mesh size, Number of nets & Number of tows |
| Otter Trawl – Mid-water | OTM | Mesh size, Number of nets & Number of tows |
| Beam Trawl | TBB | Mesh size, Number of beams & Number of tows |
| Pair trawl - Bottom | PTB | Mesh size, Number of nets & Number of tows |
| Pair trawl - Mid-water | PTM | Mesh size, Number of nets & Number of tows |
| Tangle nets | GTN | Mesh Size, Length of net hauled |
| Trammel nets | GTR | Mesh Size, Length of net hauled |
| Gill nets | GNS | Mesh Size, Length of net hauled |
| Whelk pots | FPO-W | Number of pots hauled |
| Parlour pots or creels | FPO-P | Number of pots hauled |
| Classic pots (D-pots or inkwells) | FPO-D | Number of pots hauled |
| Other gear not listed | | Indicate Gear Type |

- 2.7 Species – The quantities of all species must be recorded in kilogrammes by live weight. If there are insufficient columns an additional page may be used to complete the submission. FAO species codes should be used.
- 2.8 Examples of completed logbook entries are shown in the Annex.

Annex

Area codes chartlet

Note: Only fishing conducted in Jersey territorial waters, should be recorded on logsheets.



Logsheet entry examples

Example – Otter trawl – Bottom, using 95mm mesh net, 1 trawl net, 12 tows or 12 times the net was shot and hauled, fished in subzone 27E75

| Date | Area Fished | Gear 1 | Gear 2 | Species (live weight in kilogrammes) | | | | |
|------------|-------------|--------------------|--------|--------------------------------------|-----|-----|-----|-----|
| | | | | RJH | BLL | SYX | CTC | POL |
| 01/05/2021 | 27E75 | OTB – 95 1 - 12 | | 465 | 25 | 140 | 35 | 10 |

Example – 2 bars of 4 dredges = 8 dredges. 10 tows or 10 times the dredges were shot and hauled, fished in subzone 27E76

| Date | Area Fished | Gear 1 | Gear 2 | Species (live weight in kilogrammes) | | |
|------------|-------------|---------------|--------|--------------------------------------|-----|--|
| | | | | SCE | SCR | |
| 02/06/2021 | 27E76 | DRB - 8 10 | | 525 | 20 | |

Example – 450 wheelk pots & 100 D-pots/classic pots, fished in subzone 26E77

| Date | Area Fished | Gear 1 | Gear 2 | Species (live weight in kilogrammes) | | | |
|------------|-------------|----------------|----------------|--------------------------------------|-----|-----|-----|
| | | | | WHE | LBE | CRE | SCR |
| 15/06/2021 | 26E77 | FPO – W 450 | FPO - D 100 | 320 | 25 | 45 | 20 |