

Stakeholder Event
Future St Helier



LIVE • WORK • VISIT

Future St. Helier

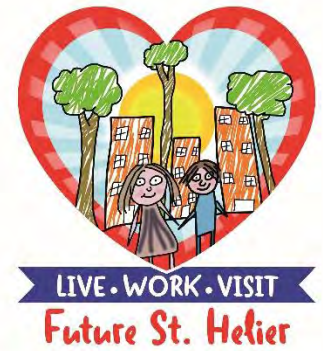
The story so far...

Story so far...



- **Why we are here**
- **You said...**
 - **You told us what was important to you and why?**
- **We've done...**
 - **How we have used your insight to deliver change**
 - **some examples...**
- **Insight of youth**

Story so far...



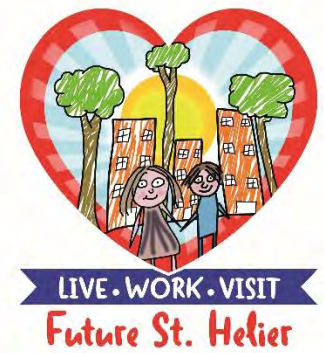
Setting the context

*The regeneration of St. Helier is one of the
Council of Ministers' Strategic Priorities*

States Strategic Plan

- The regeneration of the town of St Helier as a vibrant, environmentally aware and attractive urban centre of distinctive character that people want to use, visit, invest and live in.

St. Helier: satisfaction



The context: recognise where we start from

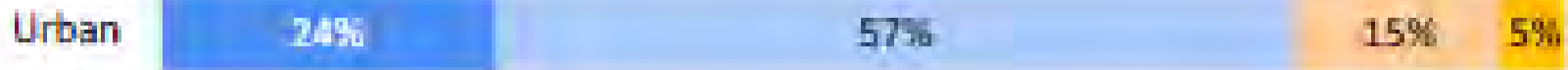
Live



Work



Visit

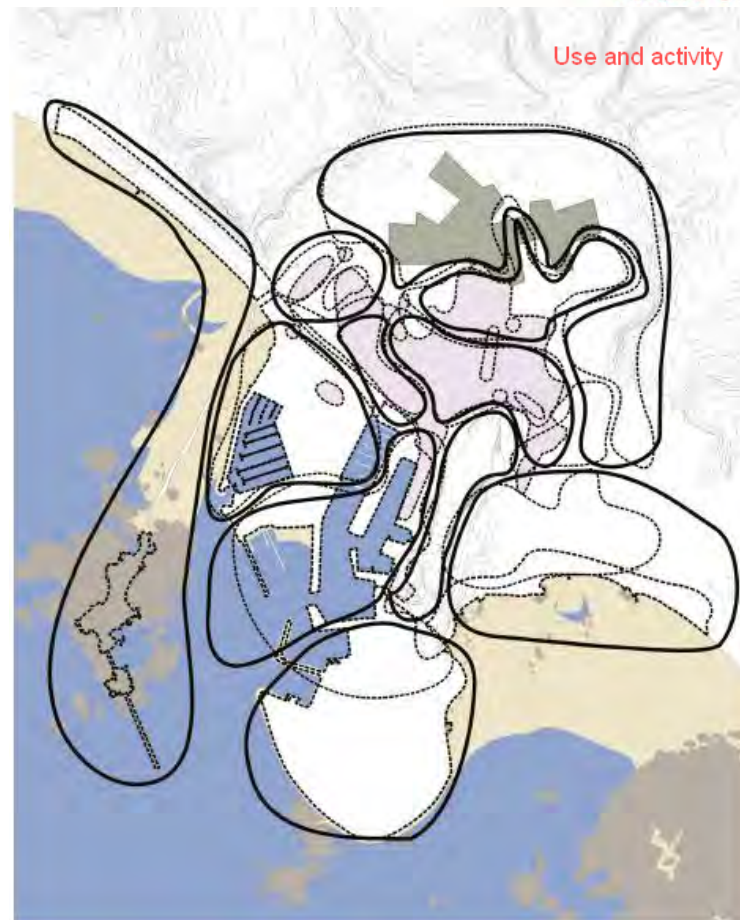
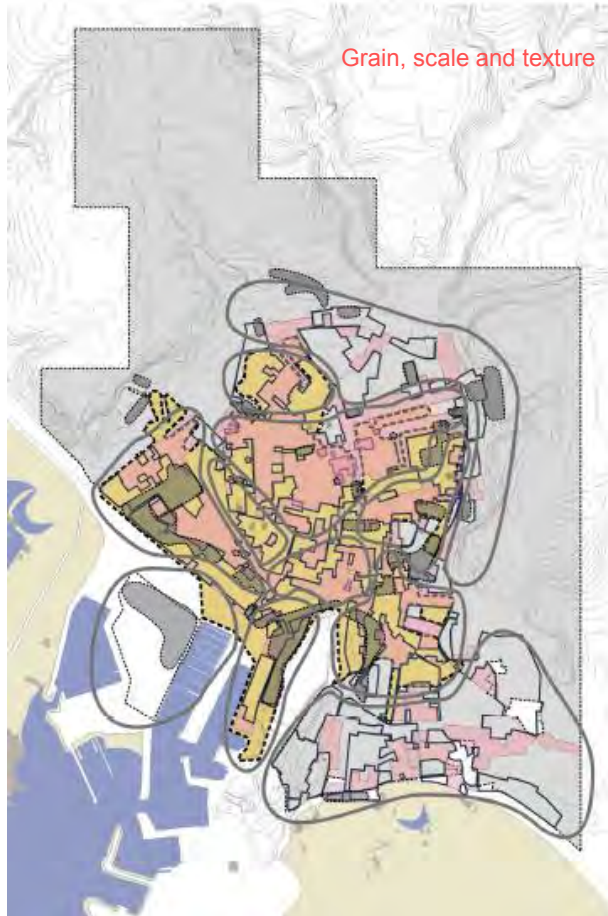
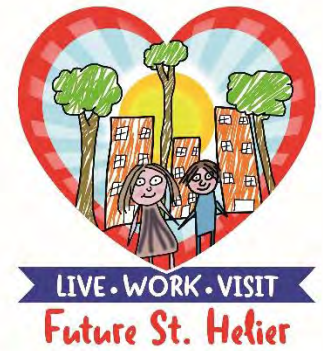


Very satisfied Fairly satisfied Fairly unsatisfied Very unsatisfied

Source: Jersey Annual Social Survey

Complexity

Context: recognise the challenge is complex



An example of complexity: trying to understand the character of St. Helier
(from St. Helier Urban Character Appraisal)

Long term

Context: recognise change will take time



Jersey

Jersey's Millennium town park opens after 13-year wait

29 October 2011 | Jersey



Jersey's Millennium town park will open to the public on Saturday - after 13 years of planning.

The idea was discussed in 1998 and the States agreed to create it in 2000 after a petition from 16,400 people.

The plans stalled a number of times because of a lack of funds, but an "accidental" vote involving a ring binder in 2009 meant £10m was allocated to pay for the new park.



After 13 years of planning, the Millennium town park opens to the public on 29 October



You said...

Public Workshop: May 2015



Key messages



You said...

- Changes should be evidence-based
- Government should work together more
- We should involve stakeholders in decision-making
- We should make small, incremental changes and try things out

Case study: Charing Cross



Case study: Charing Cross



We've done...

- Some research: pedestrians and cyclists formed 93% lunchtime traffic
- Some consultation, with businesses in the area and the general public
- Some work together: pooled resources from the Department for Infrastructure and the Parish of St. Helier
- A temporary trial to monitor and assess impact

Case study: Charing Cross



A longer term plan



**Charing Cross
Conceptual 'full'
scheme: part of
an integrated plan**

Quality of life

Themes: our work to improve St. Helier is about improving quality of life. This has been analysed using themes



Social and cultural life

Local identity
Links with neighbours
Wellbeing
Feelings of safety
Local facilities

Amenities and infrastructure

Community space
Adaptable space
Transport links
Distinctive character
Street layout
Local integration

Workshop session 1

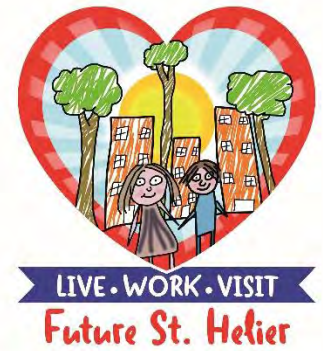
Travel and transport

- What are the key travel issues for St. Helier?
- How could they be addressed?



- Future St Helier is a place where people find it easy to get to; move around and navigate; whether by foot, bike, bus, car or van
 - What would matter to you and why?
 - What could we change to meet what's important to you?
 - If we could only change two things, what would they be?

Travel and transport



You said...

- St. Helier could be difficult to get in and out of. More sustainable modes of travel should be encouraged.
- Pedestrians needed a better deal

We've done...

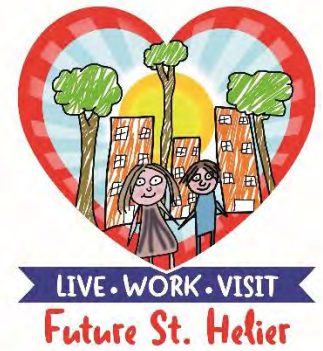
- Introduced a subsidy to encourage the use of electric bikes
- Implemented new pedestrian crossings in the heart of town

Travel and transport

- Electric bike subsidy scheme
- Over 200 bikes purchased
- Encouraging modal shift and more sustainable travel into St. Helier



Travel and transport



New pedestrian crossings at...

- Wests' Centre
- York Street/ Dumaresq Street
- York Street/ Charing Cross
- and plans for improvement in and around Seaton Place/ Sand Street and Castle Street



Workshop 2015: session 2

Urban living and environment

- Living space
- External space
 - Green space
 - Hard space
 - Streets
- St Helier offer
 - art and culture
 - retail
 - entertainment



- Future St Helier is a place where you would want to live in; or a place that you would want to visit and spend time in
 - What would matter to you and why?
 - What could we change to meet what's important to you?
 - If we could only change two things, what would they be?

Urban living and environment



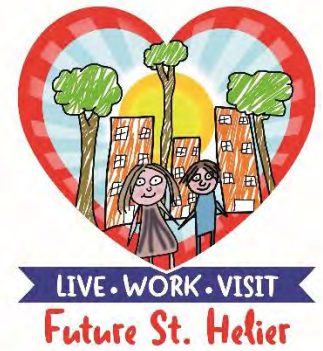
You said...

- Quality of living space needed to be improved
- Internal and external living space should be increased

We've done...

- Some research to find out what people think about their homes
- Some work on a review of planning guidelines

Urban living and environment



- A housing survey of recent developments will be used to inform a review of new standards for the design of homes

Housing standards survey

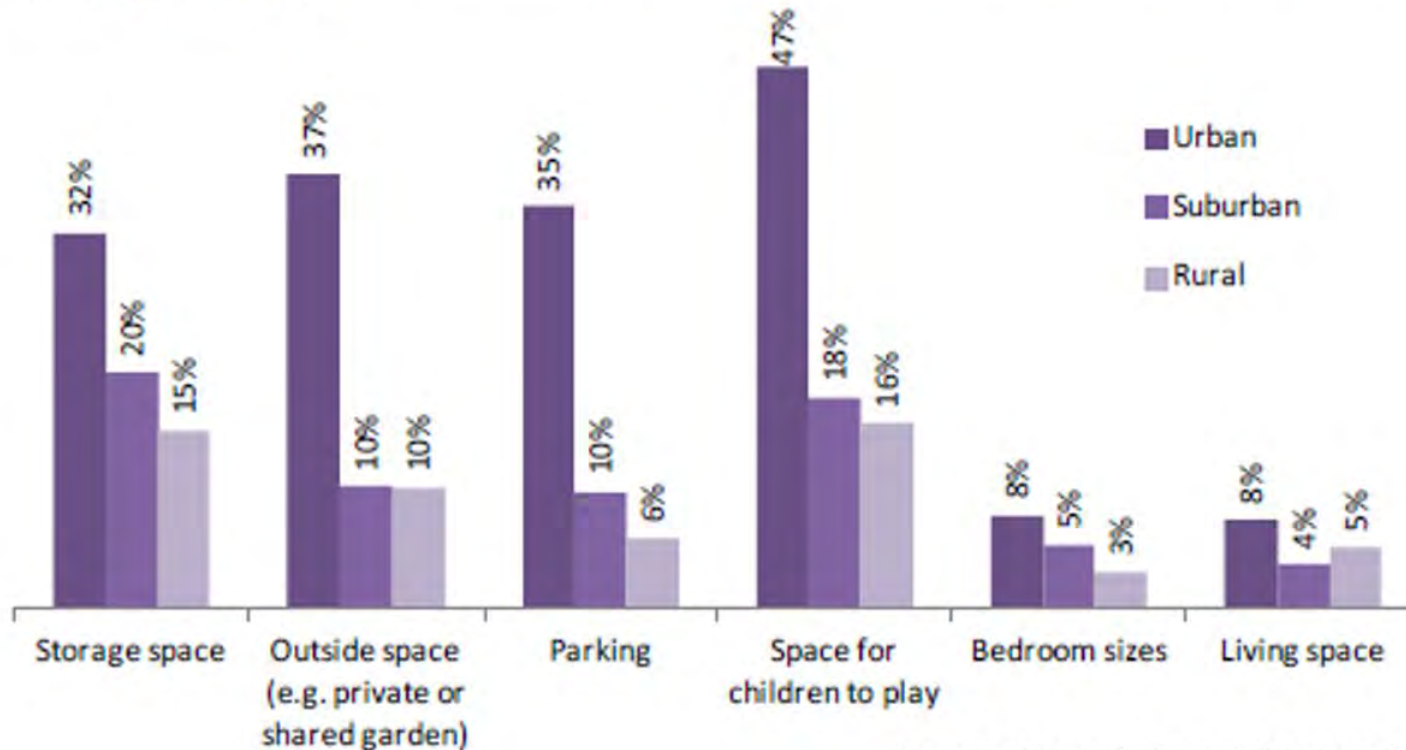
- 26 % not satisfied with overall size of dwelling
- Living rooms and bedrooms identified least adequate
- 43 % not satisfied with internal storage space
- 35 % not satisfied with external storage
- 20 % not satisfied with private space access
- 40 % not satisfied with external children's play space
- 71% satisfied with car parking space
- 36% report noise issues

Urban living and environment



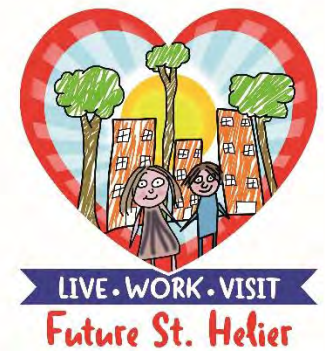
- The Annual Social Survey will be used to inform a review of new standards for the design of homes

Figure 5.2 Percent of residents who feel aspects of their accommodation are 'not very' or 'not at all' suitable, by parish group



- Jersey Annual Social Survey (2013)

Urban living and environment

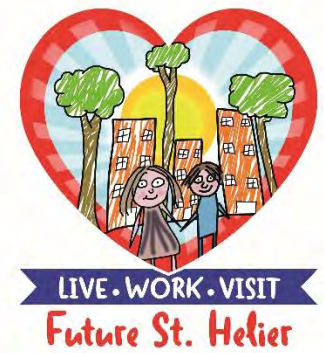


- **Planning guidance**

- **Daylight and sunlight**
- **Privacy and space between buildings**



Urban living and environment



- **Planning guidance**

- **Space standards**
- **Density**
- **Parking**



Urban living and environment



You said...

- Better use should be made of land and buildings in town

We've done...

- Encouraged and facilitated new forms of residential development in town to allow the re-use and development of buildings
 - Office to residential and retail
 - Re-use of historic buildings

Urban living and environment

- Example of good use of former office building to provide retail and new homes in St. Helier



**Office conversion:
Pierre Arrive House
Colombarie**

Urban living and environment



Example of re-use of historic building to provide new homes in St. Helier



**Historic building:
Former JCG School**



Urban living and environment

- Marketing of homes in St. Helier highlighting the benefits of town-living



Urban living and environment



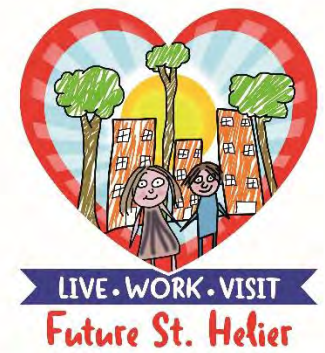
You said...

- There was a need for a plan for the 'greening of St. Helier
- There was support for more urban trees

We've done...

- An audit of St. Helier's open space
- Some work to prepare for a survey of St. Helier's trees

Urban living and environment



VALUING LONDON'S URBAN FOREST

Results of the London
i-Tree Eco Project



- Looking elsewhere to see what is best practice

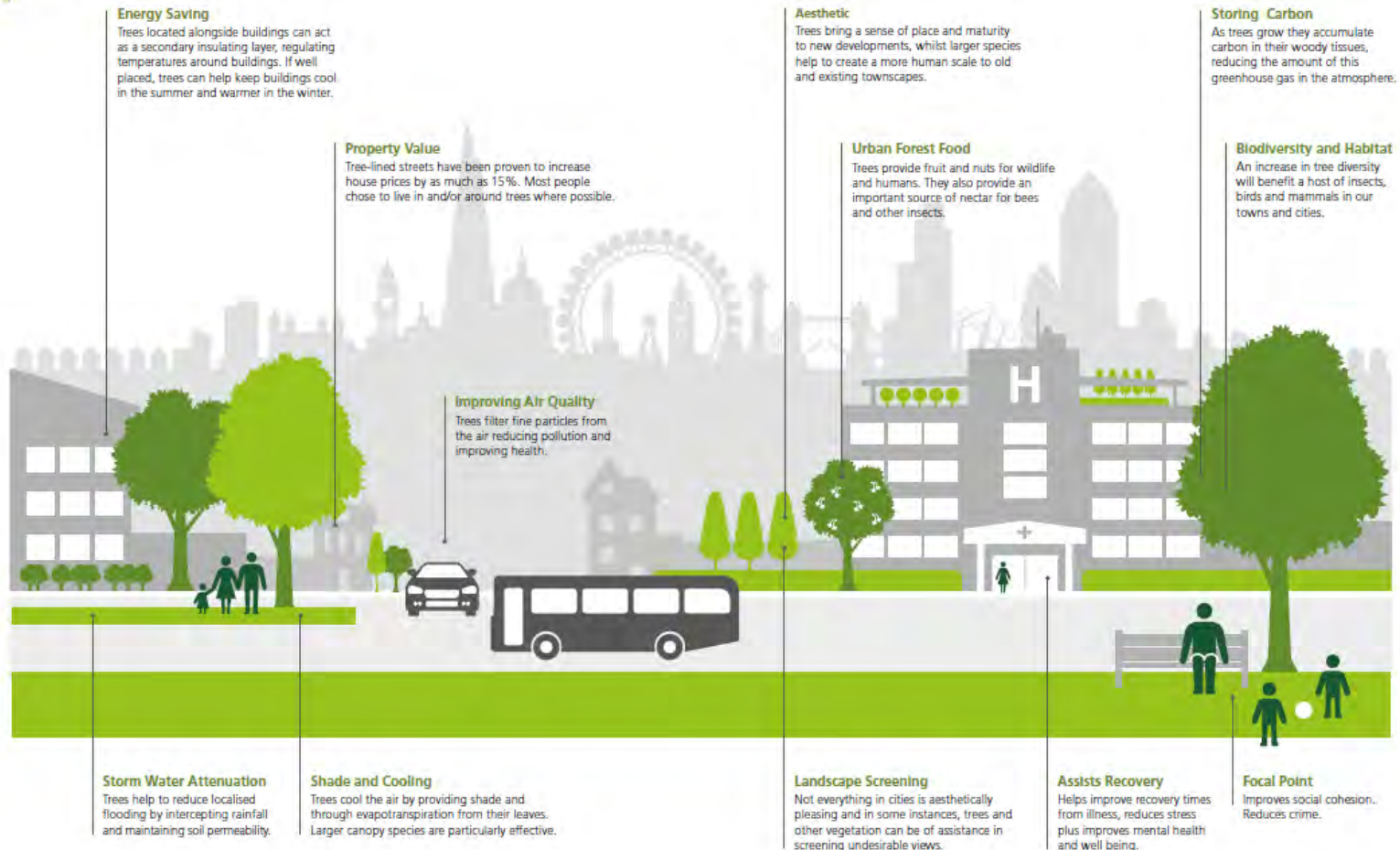


Urban living and environment

- Looking at the wider benefits of trees

The benefits of trees

Fig 1



Urban living and environment

- *St. Helier Tree Survey: working in partnership*



Workshop session 3

Identity and community

- Sense of place
- Character
- Community



Workshop session 3

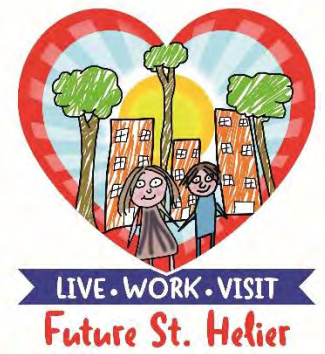
Identity and community

- An old place
- A unique place
- A place to use
- A place to meet
- A place to work
- A place to play
- A place to be



- Future St Helier is a place that feels safe; that has a sense of identity and community
 - What would matter to you and why?
 - What could we change to meet what's important to you?
 - If we could only change two things, what would they be?

Identity and community



You said...

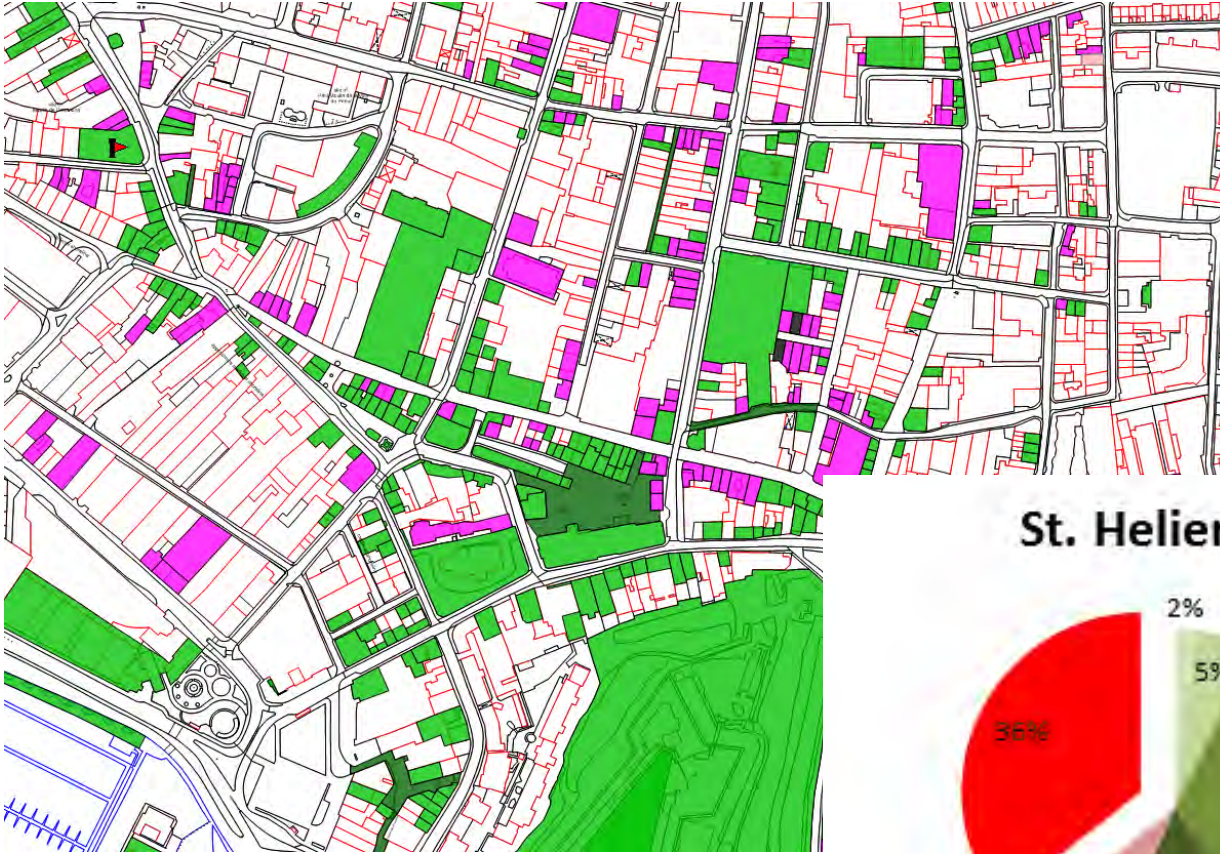
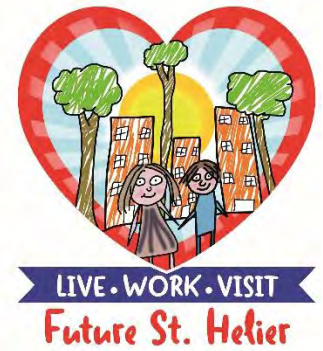
- Promote awareness and protect character of historic St. Helier

We've done...

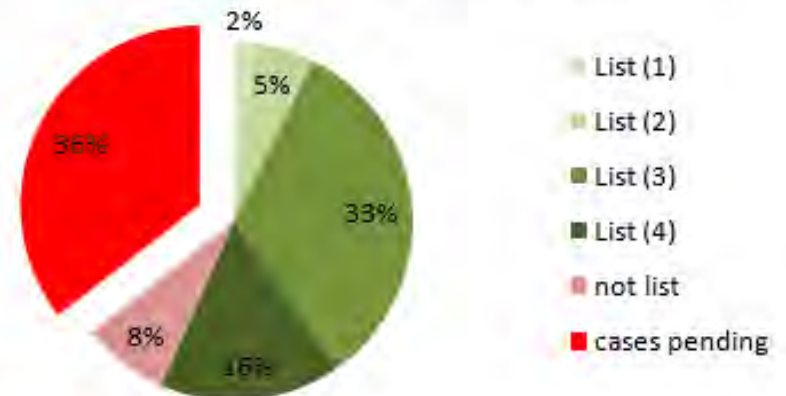
- A review of the heritage status of over 1,200 heritage buildings and places (about 66%) in St. Helier
- Engaged with owners
- Published details online

Identity and community

- Making progress to protect St. Helier's historic buildings



St. Helier (end Q2: 2016)



Identity and community

- Obvious and 'hidden' heritage of St. Helier



Identity and community



- Heritage is also about places



Identity and community



You said...

- There was a strong link between the availability of spaces and community activities
- Holding events was very bureaucratic

We've done...

- Held more events on the streets and spaces of St. Helier than even before
- Developed a paper about the Control of Public Entertainment to make holding events easier

Identity and community



**Fete de St. Helier
Broad St - Parade**

**Liberation Day:
Liberation Square
and all around**



Identity and community



Polish Cultural and Food
Festival: Liberation Square

Celebrate Portugal's Euro 2016 win:
Minden Place



Primary School Perspective

Future St Helier

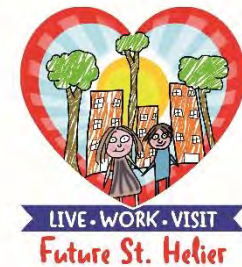


LIVE • WORK • VISIT
Future St. Helier



Primary School Perspective

Future St Helier



Team : "Future Houses"

①

What would make you want to live in St Helier and what would it look like?

1 bungalow with Sweet Shops	2 Flat with Party house	3 Sky Scrape with pools
4 modern House with pools		

If you had a magic 'Harry Potter' wand what would you wish it to do to make better homes in St Helier?

~~S~~ugar vomiting Volcano Live in one
part other part Sugar

Why?

Shoots out Sugar

How can we make this happen for you?

make a Electric house. Shaped volcano
with Sugar in it

Why is it important to you?

cause we like
Sugar room to myself

What would your Mum and Dad like?

Mum wouldn't like it

Modern house Sky Scaper

Draw what your top idea looks like:



Primary School Perspective

Future St Helier



I wish
I had
a ~~car~~
segway

No homeless people

A free packet of sweets when
you get the park or in
the stores.

1000
fun water parks
and 1000
mums and
dads parks!!

Water
park
yey

