

Develop your career in Clinical Pharmacy

Jersey, the location to progress and specialise your Pharmacy career.



Starting Package: * £66,000 +

*Estimated package including on-call allowance



Diversification of career opportunities including specialist routes such as Immunotherapies, Oncology, Haematology and Pharmacoeconomics .



Significant training and development opportunities. Training budget doubled in 2025.



Relocation support and visa sponsorship. Generous relocation package including landing accommodation and relocation management.



Financial commitment to transform healthcare with state-of-the-art facilities, including a brand new acute hospital.



Better work-life balance with an unbeatable coastal lifestyle, no commute and a close-knit community.



**Health and Care
Jersey**

**For more information about relocating to Jersey,
please email pharmacycareers@gov.je**



Our healthcare system

Health and Care Jersey is a department of the Government of Jersey. While not part of the NHS, it operates within the NHS career framework but enjoys greater autonomy, flexibility, and diversity - benefits that extend to our team members. We offer a unique opportunity for career development, including the ability to transition across disciplines with access to the necessary training and support.

With one general hospital and immediate access to a wide range of training programmes, we empower our pharmacists to deliver the highest standard of patient care with opportunities for clinical specialisation for example, immunotherapies, surgery, medicine and palliative care.

Here, we have the time to truly make a difference offering a holistic approach to patient care. People are not just numbers—they are individuals, and we pride ourselves on treating them as such.

Life and work in Jersey offer a balance of familiarity and uniqueness. With one central hospital and a few offsite facilities, there is limited commuting, and you'll quickly develop strong connections with colleagues and patients alike. Our comprehensive training and education programmes also foster relationships across different parts of government, creating a supportive sense of community and professional camaraderie.

Working in Jersey means you'll witness the direct and meaningful impact of your care every day. Additionally, our healthcare system maintains close ties with UK tertiary centres, ensuring islanders have access to specialised care when needed.

Join our diverse and dedicated team of healthcare professionals who are making a real difference in the lives of Islanders every day.

Our healthcare facilities

Working in an island healthcare environment like Jersey you get to know people quickly and fortunately our multi site health care facilities are all within a short commute.

The healthcare facilities incorporate everything from acute hospital care to maternity services, community and acute mental health care provision, to adult social care, occupational therapy and physiotherapy.

Jersey General Hospital is the cornerstone of healthcare on the Island, providing essential medical care to over 100,000 Islanders and visitors.

The central healthcare hub is home to a team of over 2,000 healthcare professionals working across 30 departments. It operates as a centre for healthcare, playing a pivotal role in providing exceptional patient centred medical services to the Island's community. Open 24 hours a day, 365 days a year, the hospital delivers a comprehensive range of specialist medical care and services, from acute to emergency care and outpatient care.

The Enid Quenault Health and Wellbeing Centre, a brand-new, cutting-edge outpatient facility named after the esteemed politician, Enid Quenault, celebrated for her enduring commitment to Jersey. This modern centre consolidates a diverse array of outpatient services in a single, well-equipped location. It features spacious consultation rooms, inviting public areas, a café with extended operating hours and excellent staff facilities, including showers and dedicated staff rest area.

New healthcare facilities

The Government of Jersey is committed to delivering new, modern healthcare facilities to provide a great environment for patients and staff. In consultation with Health and Care Jersey, work is underway for the New Healthcare Facilities Programme to deliver a new Acute Hospital (Inpatient, Women's and Children, Emergency Department and Theatres) at Overdale, Ambulatory Hospital (Outpatient and Day Surgery) at Kensington Place, and a Health Village in St Saviour (Physical and Mental Health).

The Enid Quenault which opened in August 2023 is one part of the New Healthcare Facilities programme. The Clinique Pinel mental health ward providing crisis care and assessment is another new facility which opened its doors this year. New high-quality healthcare facilities, fit for 21st century needs, will help clinicians deliver clinical care for Islanders as well as providing excellent spaces for the wellbeing and further development of staff.

New acute hospital

Compared to the current General Hospital, the new proposed Acute Hospital at Overdale will be a serene and quieter environment within a landscaped setting, ensuring optimal conditions for patient care and recovery. The modern, fit-for-purpose healthcare facility briefed and designed following hundreds of clinical user groups will include a flexible, modular design approach to ensure future-proofing as clinical requirements change.

The facility has been designed to allow maximum daylight, reduction of solar gain and creation of safe, wind-protected environments, maximising opportunities for Sustainable and Low Carbon Design. The arrangement of inpatient bedrooms maximise the coastline and valley views which are proven to support health recovery.





Our Pharmacy department

We are Pharmacy; an expert professional group at the heart of Jersey's Health and Care department.

Our purpose: To keep islanders healthy through the optimised use of medicines.

Our vision: To be a trusted, accessible, and efficient department that delivers evidence-based and cost-effective pharmacy services. We strive to create an environment where team members live the HCJ values and feel valued.

Join our friendly hospital pharmacy team in Jersey, where we are committed to delivering exceptional patient care through medicines optimisation.

We are a dynamic and growing team of 55 professionals, with 8 new members joining us as part of our 2024 expansion. We are also committed to supporting career development for our assistants and technicians, offering pathways to qualify as a pharmacy technician and achieve registration with the GPhC.

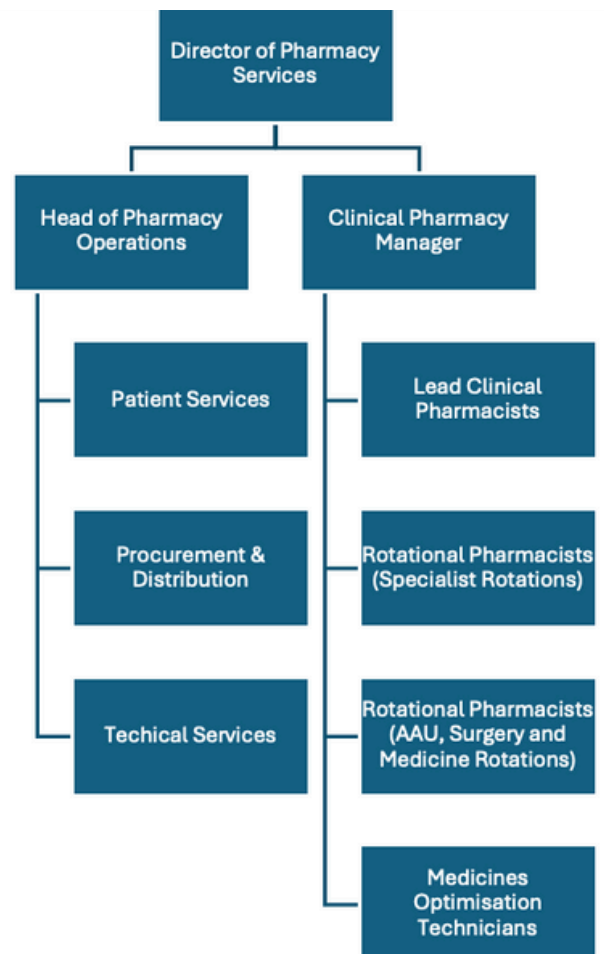
Our pharmacists play an integral role in multidisciplinary team (MDT) working, collaborating with healthcare professionals across a wide range of specialties to ensure the best outcomes for our patients.

We provide expert care in advanced areas, including immunotherapies, oncology, haematology, paediatrics, and mental health, offering unique opportunities to grow and specialise in diverse fields. Our aseptic preparative services deliver high-quality, personalised medicines, while our outpatient services ensure continuity of care for those transitioning from hospital to community.

We process 15,000 items a month in our main dispensary; a mixture of outpatients, inpatients and to-take-away (TTA) prescriptions.

Discover a fulfilling career in Jersey's hospital pharmacy, where you'll make a meaningful difference every day.

Current Pharmacy Structure



Our commitment to Equality, Diversity and Inclusion

We are committed to the South West Inclusive Pharmacy Practice manifesto, fostering a diverse and inclusive workplace where everyone is valued and respected. We believe that a diverse team enhances patient care and drives innovation.

We welcome applications from all individuals, regardless of race, ethnicity, gender identity, age, sexual orientation, disability, religion, or socioeconomic background, and ensure equal opportunities in all aspects of employment. We empower our staff to perform at their best, promoting a culture of inclusivity and mutual respect.

If you need any adjustments or support during the application process or in the workplace, please let us know. Join us in creating a workplace that celebrates diverse perspectives and experiences.

Our People

Sarah-Jane's Pharmacy Journey From Community to Hospital



Born and raised on the beautiful island of Jersey, Sarah-Jane always aspired to make a difference in healthcare. After qualifying as a pharmacist, she returned home to begin her career.

Starting in Community Pharmacy

Sarah-Jane began her journey in community pharmacy, building strong patient relationships and providing personalised care. However, she sought broader opportunities to enhance patient outcomes on a larger scale.

Advancing at Jersey General Hospital

Joining Jersey General Hospital as a rotational pharmacist, Sarah-Jane gained diverse experience and developed her expertise. Promoted to Clinical Pharmacy Manager, she led a team of pharmacists, overseeing medication safety and patient care across hospital wards.

Leading in Immunotherapies

Eager to specialise, Sarah-Jane became **Lead Immunotherapies Pharmacist**. As an independent prescriber, she manages clinics, develops treatment plans, counsels patients, and collaborates with specialists to optimise care. This role allows her to empower patients and innovate treatment pathways.

Adam's Relocation Journey From the UK to Jersey



Adam, an **Antimicrobial Stewardship Pharmacist**, started locuming in the Western Isles of Scotland 15 years ago, attracted by the natural beauty and peaceful surroundings. Originally planning to move to Gibraltar, a last-minute opportunity in Jersey changed his course.

Falling in Love with Jersey

After just six months, Adam fell in love with Jersey, a place reminiscent of Devon, where he grew up. The island's friendly community, stunning beaches, delicious food, and countryside made it the perfect place to call home. He met his wife, a bank nurse, and after a brief locum post elsewhere, returned to Jersey for a permanent role. They've since bought a home, got a dog, and married at a beautiful local hotel.

A Rewarding Role and Lifestyle

Jersey offers a rewarding career for pharmacists. The role is well-paid, varied, and offers personal interaction with patients and healthcare professionals, something larger city hospitals can't always provide.

Why Move to Jersey?

Adam encourages fellow pharmacists to relocate to Jersey for its better lifestyle, stimulating work, and the opportunity to influence healthcare at an island-wide level.



Our commitment to your development

We are dedicated to supporting the development and progression of our pharmacy team. This includes providing support and funding for the completion of the Clinical Diploma and Independent Prescribing as part of foundational training, with strong partnerships with Bath and Robert Gordon Universities. We actively encourage attendance at the Clinical Pharmacy Congress (CPC) and participation in various networking and educational events.

Our commitment is to ensure our team remains at the forefront of clinical practice by aligning with the Royal Pharmaceutical Society's (RPS) Advanced Pharmacy Framework, which develops pharmacists across six key clusters and competencies:

- Expert Professional Practice
- Collaborative Working Relationships
- Leadership
- Management
- Education, Training, and Development
- Research and Evaluation

We ensure our Pharmacy Assistants gain an NVQ Level 2 Certificate in Pharmacy Service Skills, enabling them to enhance their technical expertise and customer service abilities. For Student Technicians, we offer a comprehensive pre-registration programme in collaboration with the University of East Anglia, ensuring a strong foundation for their careers. After registration, we provide post-registration courses, including Accuracy Checking, Medicines Optimisation, and Advanced Pharmacy Technician Practice, to support ongoing professional development.

By joining us in Jersey, you'll become part of a team that prioritises your growth and career aspirations. We provide the resources, opportunities, and support you need to excel, all while enjoying the unique and rewarding benefits of island life.



How we help you relocate

Your move, Your Island life, Your development

Striking scenery, a safe and inclusive society, miles of sandy beaches, high performing schools, an enviable work-life balance, a heritage, political and economic stability, low personal taxes, warm summers and mild winters.

Jersey is an island idyllically situated between England and France and offers career advancement as well as an excellent work life balance. With history and heritage dating back over millenia and food and lifestyle options available for you to enjoy, life in Jersey caters for all.

[Click here to find out more.](#)

Should you be offered and accept a role with the Government of Jersey our relocation to Jersey package includes:

Familiarisation visit

We will provide flights and accommodation for you, your partner, and dependent children to visit Jersey. This includes up to two nights (bed and breakfast) for one visit, with property viewings arranged by our relocation partners. Booking must be through our preferred travel provider.

Landing Accommodation support

We provide Government accommodation at a reduced rate (approximately 20% below market rate) to Qualified Pharmacists relocating to Jersey for 12 months providing an opportunity to settle in.

A one-off relocation payment of £5,000

For more information please contact the Recruitment team via recruitment@gov.je

Relocation support

To help you move to Jersey and start your employment with us, we will provide and pay for the full cost of your removals to the Island, in line with what is eligible for removal. This needs to be taken within 12 months of your employment start date.

We will also pay for the cost of travel to the Island, at the time of your relocation - for you, your partner and any dependants. If you are relocating a car to the island, it is at this point that you should relocate it, travelling by ferry with the car.

We will also provide you with complimentary practical relocation support through our relocation partners. This will include support in finding a home and sorting the administration of your move. All of which is part of our welcome and an introduction to the Island. We want to make your relocation as easy as possible for you.

Our immigration and sponsorship support

Jersey has its own immigration laws, with a dedicated department handling Jersey work permit applications. Time spent in Jersey counts towards your UK Indefinite Leave to Remain, whether you're relocating from the UK to Jersey or vice versa.

We welcome applications from all international pharmacists including those nearing the end of their international graduate visa.

Requirements for Work Permit:

- GPhC registration and qualifications
- 2 years of professional experience (can be alongside studies)
- Validated written and oral English skills



How do the living costs compare?

Before relocating, it's helpful to understand the cost of living. Below, we've outlined average costs to give you a sense of island life compared to cities like Glasgow, Belfast, and London.

Visit www.gov.je/movingtojersey for more details about about life in Jersey.

Note: Figures are for guidance only (as of August 2024) and may vary based on individual circumstances. We recommend comparing your personal finances and seeking financial advice tailored to your situation.

	Jersey	Glasgow	Belfast	London (Inner)	Dublin	London (Outer)	Southampton
Salary before tax	£66,000	£37,328	£37,328	£44,807	€45,000	£42,775	£37,328
Personal Exemption	£20,000	£12,570	£12,570	£12,570	€18,000	£12,570	£12,570
Tax	£9,200	£5,199	£5,199	£6,447	€5400	£6,041	£4,951
Social/NI	£3,960	£2,986	£2,986	£3,584	€1,800	£3,422	£2,986
Net Income	£52,840	£29,143	£29,143	£34,776	€37,800	£33,312	£29,391
Council tax	£220	£1,416	£2,500	£1,920	€2,500	£1,920	£2,151
Rent 1 bed flat	£15,000	£9,276	£10,800	£20,400	€21,120	£18,000	£9,528
Broadband and mobile	£1,050	£420	£600	£720	€696	£720	£720
Gas/Oil and Electricity	£980	£1,174	£1,160	£1,175	€1,239	£1,175	£1,175
Bus pass/travel card	£500	£840	£768	£2,313	€1,080	£2,313	£624
Water	£220	£232	£159	£444	€159	£444	£444
Income after costs of living	£34,870	£15,785	£13,156	£7,804	€11,006	£8,740	£14,749