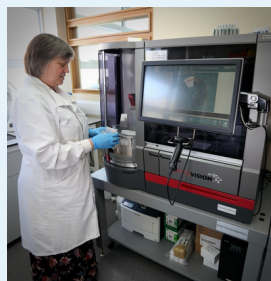
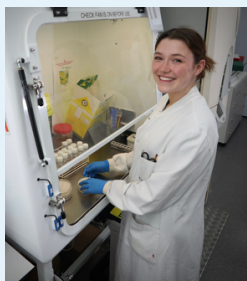
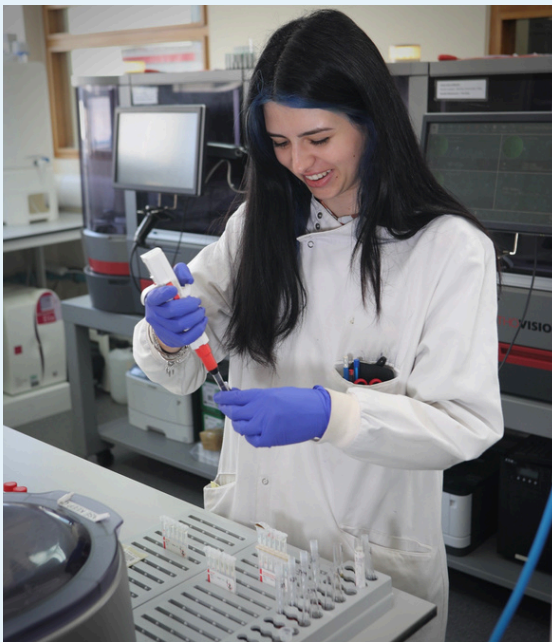


# Our Island takes the time to care

A manageable workload means more time for you.  
Make this your time to move to Jersey.



Starting salary for Specialist Biomedical Scientist : £64,466 (equivalent to band 6)



Regular working hours and achievable work load.



90 scientists. An increase of 10% headcount growth in 2024 and further investment in 2025.



Opportunities to rotate including donor work.



Financial commitment to improve and invest in new healthcare facilities, including a brand new acute hospital and new pathology laboratory.

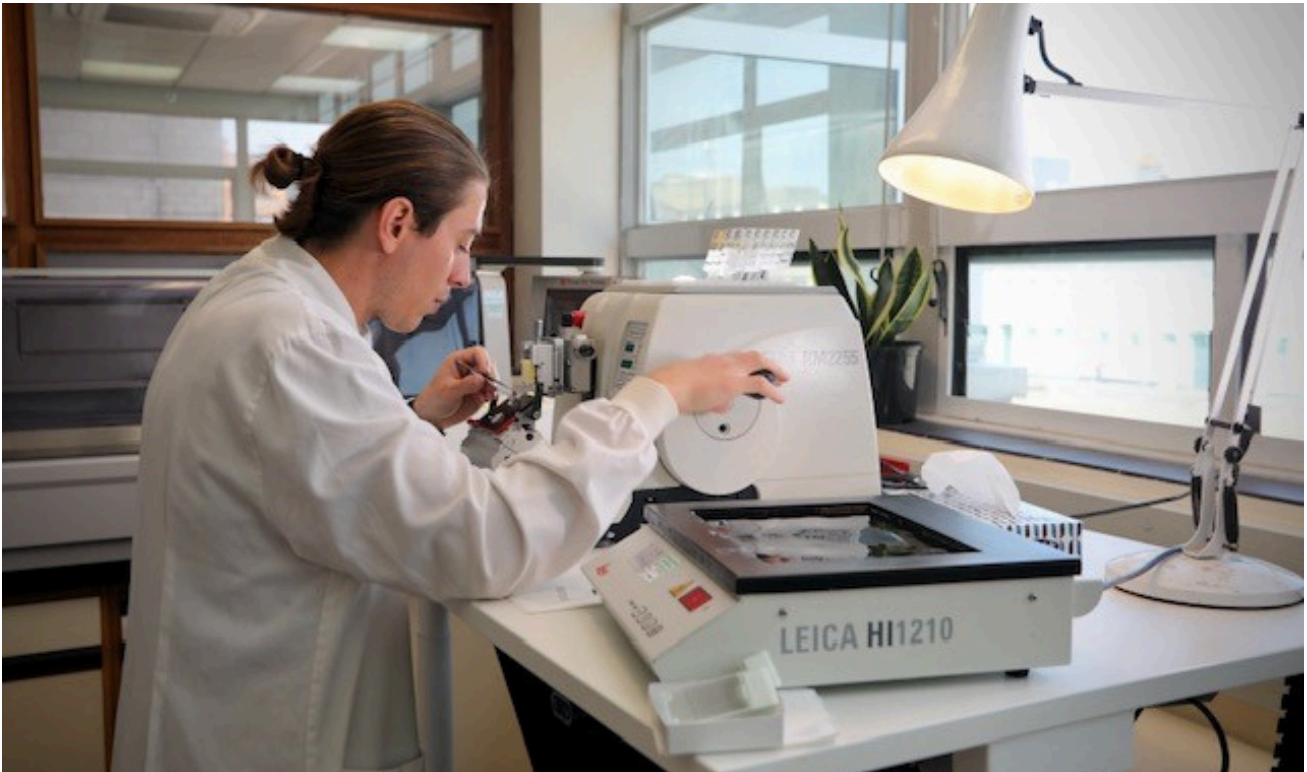


One General Hospital with one pathology department.



Health and Care  
Jersey

For more information about relocating to Jersey, please email [pathologycareers@health.gov.je](mailto:pathologycareers@health.gov.je)



## How we care

Health and Care Jersey is a Government of Jersey department. Health and Care Jersey is not part of the NHS.

Jersey is a unique place to live and work and being a Biomedical Scientist in Jersey is different. As a crown dependency, we are an Island nation which includes our own healthcare Service. And it is a service on the move. With our patients and health professionals at the centre of all we do, as a Biomedical Scientist you have more time to deliver your role and we give more time to you, for your development and wellbeing.

Biomedical Scientists provide a broader range of services in Jersey including cellular pathology, virology, blood science and blood donor services. The variety of services that you will work in Jersey is far more extensive, our team rotate every week to provide an interesting and diverse role.

And as with many aspects of Island life, our healthcare system is familiar enough for comfort but offers variances that mean our Biomedical Scientists have a different experience. A small Island community, we have one main hospital that acts as a hub with a smaller lab where our pathology service is integrated, covering a wide range of duties, including our own donor centre.

Working in an Island healthcare environment like Jersey you get to know colleagues quickly. This creates a strong sense of community and professional comradery within the healthcare system. You will be at the heart of a comprehensive diagnostic service, covering key specialisms including blood sciences, cellular sciences, infection sciences and our own blood donation centre.

What's more, working in an Island community, you will see and feel the extraordinary impact of your expertise and dedication every day.

We're developing our service and our team including investing to increase our team by 10% this year. We are committed to our people and are devoted to delivering outstanding pathology services to our Island community.

Be part of our expanding service, join our diverse team of Biomedical Scientists making a difference to lives of Islanders every day.



## Our teams

With one General Hospital on the Island, working as a Biomedical Scientist in Jersey is a unique opportunity. Our Biomedical Scientists offer comprehensive diagnostic services covering the key specialisms of blood sciences, cell sciences, and infection sciences. We will continue to use innovative technology in the newest facilities embracing the opportunity to design and create future services.

### Joining our team:

Your career becomes unique in Jersey due to the rotation opportunities available. Your career will not stagnate in Jersey, we are committed to providing development job openings for all.

### Cellular Pathology

With a team of 20 staff and almost 10,000 cases, Cellular Pathology is a small, but growing service. The service provides specialised pathological expertise across the Island and supports Jersey's Cancer Strategy and underpinning the diagnostic process. Our team is equipped with height adjustable tables for individual comfort, performing microtomy and utilises Leica microtomes and immunohistochemistry services, with Tissue-Tek Prisma for slide automation.

### Infection Sciences

Infection Sciences combines the pathology disciplines of Medical Microbiology and Virology. We provide an extensive diagnostic and advisory service for the management of infections in patients for the Island, working closely with the infection & prevention team, public and environmental health in Jersey. Using the latest technologies, including the Bruker Biotyper MALDI-ToF for rapid bacteria and fungi identification, the Abbott Alinity i, immunoassay system, and the Alinity m, for molecular diagnostics, infection sciences processes over 130,000 microbiology and 30,000 virology tests per annum.

### Blood Sciences

Blood sciences combines the pathology disciplines of, Clinical Chemistry, Haematology, and Transfusion Science. A team of over 40 staff provide a wide repertoire of blood, serum, and urine analysis, offering an extensive service 24 hours a day, 365 days of the year. Our team analyse over 1.3 million biochemistry, 200,000 haematology, 18,000 transfusion tests and is equipped with Vitros® integrated systems for our chemistry and immunoassay, Sysmex and Werfen for haematology and Vison for blood transfusion. An increasingly high demand area, Jersey is looking to develop it's roles and clinical offering, through advanced practice and supporting equivalence scientist routes.

### Donor centre

Jersey is privileged to provide its own donor service on site. The blood sciences and donor team manage the whole process from collecting, manufacturing, and testing to issuing red blood cell donations to patients. It is also involved in Jersey's haemophilia service which provides patients with haemophilia therapeutic products to help with clotting.

## Where we care

Jersey General Hospital is the cornerstone of healthcare on the Island, providing essential medical care to over 100,000 Islanders and visitors. With one General Hospital on the Island serving a population of over 100,000, Jersey's healthcare system allows you to have a direct, positive impact on patient care and your fellow medical professionals. People are not just a number, they are a patient here in Jersey.

The central healthcare hub is home to a team of over 2,000 medical professionals working across 30 departments. It operates as a centre for healthcare, playing a pivotal role in providing exceptional patient centred medical services to the Island's community. Open 24 hours a day, 365 days a year, the hospital delivers a comprehensive range of specialist medical care and services, from acute to emergency care and outpatient care to midwifery and community health services.

The Enid Quenault Health and Wellbeing Centre, a brand-new, cutting-edge outpatient facility named after the esteemed politician, Enid Quenault, celebrated for her enduring commitment to Jersey. This modern centre consolidates a diverse array of outpatient services in a single, well-equipped location. It features spacious consultation rooms, inviting public areas, a café with extended operating hours and excellent staff facilities, including showers and dedicated staff rest area.

## New healthcare facilities investment

Health and Care Jersey has committed to investing in new healthcare facilities. The Enid Quenault Centre is one part of the New healthcare Facilities Programme, other facilities include a brand new acute hospital at Overdale which will be built over the coming years and other healthcare facilities across the Island.

The Government of Jersey is committed to delivering new, modern healthcare facilities to provide a great environment for patients and staff. In consultation with Health and Care Jersey, work is underway for the New healthcare Facilities Programme to deliver a new Acute Hospital (Inpatient, Women's and Children, Emergency Department and Theatres) at Overdale, Ambulatory Hospital (Outpatient and Day Surgery) at Kensington Place, and a Health Village in St Saviour (Physical and Mental Health). The Enid Quenault which opened in August 2023 is one part of the NHF programme. The Clinique Pinel mental health ward providing crisis care and assessment is another new facility which opened its doors this year. New high-quality healthcare facilities, fit for 21st century needs, will help clinicians deliver clinical care for Islanders as well as providing excellent spaces for the wellbeing and further development of staff.





## New acute hospital

Pathology will be based at the new acute hospital. Compared to the current General Hospital, the new proposed Acute Hospital at Overdale will be a much quieter environment within a landscaped setting, ensuring optimal conditions for patient care and recovery. The modern, fit-for-purpose healthcare facility briefed and designed following hundreds of clinical user groups will include a flexible, modular design approach to ensure future-proofing as clinical requirements change.

The facility has been designed to allow maximum daylight, reduction of solar gain and creation of safe, wind-protected environments, maximising opportunities for Sustainable and Low Carbon Design. The arrangement of inpatient bedrooms maximise the coastline and valley views which are proven to support health recovery.



# Caring for you

## Your move, Your Island Life, Your development.

Step into a world where breath-taking scenery unfolds, where safety and inclusivity thrive and where miles of sandy beaches beckon during warm summers and mild winters. This is your invitation to embrace a life that's far from ordinary in Jersey.

The starting salary for a Biomedical Scientist (band 6) is £64,466.

### How we help you relocate

Should you be offered and accept a role with the Government of Jersey our relocation to Jersey package includes:

#### Familiarisation visit

We will provide flights and accommodation for you, your partner, and dependent children to visit Jersey. This includes up to two nights (bed and breakfast) for one visit, with property viewings arranged by our relocation partners. Booking must be through our preferred travel provider.

#### Relocation support

To help you move to Jersey and start your employment with us, we will provide and pay for the full cost of your removals to the Island, in line with what is eligible for removal. This needs to be taken within 12 months of your employment start date.

We will also pay for the cost of travel to the Island, at the time of your relocation - for you, your partner and any dependants. If you are relocating a car to the Island, it is at this point that you should relocate it, travelling by ferry with the car.

We will also provide you with practical relocation support through our relocation partners. This will include support in finding a home and sorting the administration of your move. All of which is part of our welcome and an introduction to the Island. We want to make your relocation as easy as possible for you. There is no charge for this specialist support which has a menu of packages based on your individual circumstances.

#### A one-off relocation payment of £5,000

Find out more information about our relocation policy detail [click here](#).

### Island life

Striking scenery, a safe and inclusive society, miles of sandy beaches, high performing schools, an enviable work-life balance, a heritage, political and economic stability, low personal taxes, warm summers and mild winters.

Jersey is an Island idyllically situated between England and France and offers career advancement as well as a excellent work life balance. With history and heritage dating back over millenia and food and lifestyle options available for you to enjoy, life in Jersey caters for all.

**Click here** to find out more.

### Professional development

As well as a healthy and happy lifestyle, we are also committed in a Long Term Workforce Planning to grow and train a sustainable workforce, offering the support for both on & off island training. Each discipline holds IBMS laboratory training approval for pre-registration and post-registration portfolio qualifications and offers access to various training programmes and courses to enhance your skills and knowledge.

You'll be part of a friendly team of highly trained and qualified professionals. Our services are UKAS accredited and inspected by the Medicines and Healthcare products Regulatory Agency.

In Jersey you will gain more experience because our team have autonomy of processes in one site compared to teams in the UK who use a specific centre. Our Biomedical Scientists have the opportunity to be more involved and engaged in a wider range of investigations.

We endeavour to support our Biomedical Scientists to grow and develop their career journey. We want our professional team to develop your competencies growing outside their own expertise and responsibilities and become multi skilled professionals.

## Viktoriya Lysenko

### Biomedical Scientist



After I graduated in Portugal in 2019, my plan was to move to the UK, however, this changed when I heard more about the opportunities in Jersey.

I was thrilled to be offered the opportunity to start as a Biomedical Scientist in Jersey and I moved here specifically for this job in 2019. Jersey offers many exciting challenges both professionally and personally. I was attracted to the improved work-life balance, a warmer climate and a friendly Island community instead of a busier city in the UK.

I honestly feel living in Jersey provides a much better working environment, our small team engenders a strong bond with colleagues supporting each other in all aspects of Pathology. The close engagement and mutual respect we have with the Clinical teams, clinicians, consultants and nurses provides a rewarding experience enabling an opportunity to contribute fully to the best possible quality care for our patients.

The range of opportunities for career progression surprised me in a small local hospital. I am currently studying IBMS Specialist portfolio in Haematology/Blood transfusion, as well as working towards my BBTS Specialist Certificate in Blood Transfusion Science.

The nature of a small Island pathology service provides many opportunities to provide both patient and donor testing. Working in one hospital site enables our team to develop a wide range of skills, enabling career progression and involvement in the end-to-end process from the donation of a unit to its transfusion to a patient.

## How do the living costs compare?

Prior to moving to Jersey it is useful to understand the cost of living comparison and we have designed this document so you are able to start to think about Island life and how this may look for you. Find out more about moving to Jersey via [www.gov.je/movingtojersey](http://www.gov.je/movingtojersey)

The information below helps show some average or typical costs you are likely to incur moving to Jersey and how these compare with similar costs in the UK.

Living costs are for illustrative purposes only and were calculated in August 2024. Calculations may differ based on personal circumstances and suggest a comparison is made between individual finances with the numbers provided here.

This data does not negate the need to seek appropriate financial advice and investigate the costs of your own circumstances as everyone's situation is variable.

	Jersey	Glasgow	Belfast	London (Central)	Dublin	London (Outer)	Southampton
Salary before tax	£62,105	£39,912	£37,338	£44,805	€43,000	£42,938	£37,338
Personal Exemption	£20,000	£12,570	£12,570	£12,570	€18,000	£12,570	£12,570
Tax	<b>£8,421</b>	£5,741	£5,201	£6,447	€5,000	£6,073	£4,953
Social/NI	<b>£3,726</b>	£3,192	£2,987	£3,587	€1,720	£3,435	£2,987
Net Income	<b>£49,958</b>	<b>£30,979</b>	<b>£29,150</b>	<b>£34,771</b>	<b>€36,280</b>	<b>£33,430</b>	<b>£29,398</b>
Council tax	£220	£1,416	£2,500	£1,920	€2,500	£1,920	£2,151
Rent 1 bed flat	£15,000	£9,276	£10,800	£17,928	€21,120	£13,668	£9,528
Broadband and mobile	£1,050	£420	£600	£720	€696	£720	£720
Gas/Oil and Electricity	£980	£1,174	£1,160	£1,175	€1,239	£1,175	£1,175
Bus pass/travel card	£500	£840	£768	£2,313	€1,080	£2,313	£624
Water	£220	£232	£159	£444	€159	£444	£444
<b>Income after costs of living</b>	<b>£ 31,988</b>	<b>£17,621</b>	<b>£13,163</b>	<b>£ 10,271</b>	<b>€9,486</b>	<b>£13,190</b>	<b>£14,756</b>