

Occupational Therapy Technician - Community

Department: Occupational Therapy

Section: Equipment and Technical Services

Reports to: Head/Deputy Head Occupational Therapy

JE Ref: HCJ1366

Grade: CS7 **JE Date:** 05/06/2025

Job purpose

To meet all the design and fabrication of the technical requirements of the Occupational Therapy Department with respect to disability aids, adaptations electro/mechanical equipment and one-off specialist constructions to aid patient's independence in the community and client's homes.

Job specific outcomes

Advise clinical Occupational therapy staff on the technical specifications and the extent to which equipment may be adapted or modified to meet the clinical requirements and maintain safety in the hospital or in clients, home or workplace, to meet the specific needs of the patient.

Fit commercially available disability equipment when suitable and carry out adaptations using appropriate workshop techniques and materials (Wood, Metal Plastic etc) to tailor solutions to requirements.

Examine and advise on technical specifications of equipment both before and after purchase carry out pre-delivery inspections of new and returned equipment before issue to ensure suitability for its task.

Supervise all aspects of workshop activities undertaken by clients and all staff to ensure that safety standards are maintained.

Identify and design specific projects/working methods to meet the intervention requirements of individual clients as defined by Occupational Therapists.

Daily documentation and office duties. Liaise with clients and their family members for access to the home.

Attend departmental meetings. To maintain all tools for the role and to keep a stock of all parts required for the job.

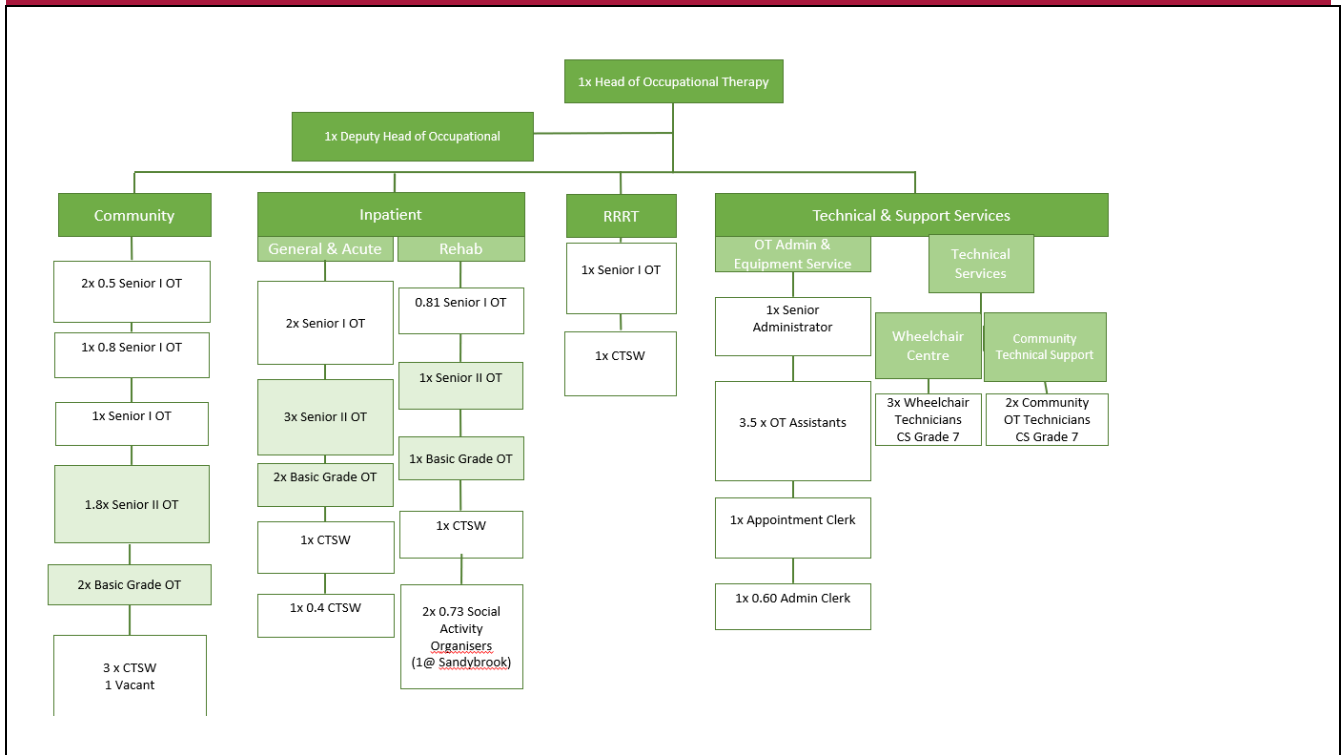
Statutory responsibilities

Active engagement, participation and compliance with any other statutory responsibilities applicable to the role, as amended from time to time.

Organisational structure



Organisation chart



Person Specification

Specific to the role

Describe the knowledge, skills, experience, and qualifications required to perform the job to a satisfactory standard.

It is important to convey what the job requires, rather than what an individual might have, as these may be different. For example, you may have a postgraduate level qualification, however, an A' Level standard qualification is the requirement for the job.

ATTRIBUTES	ESSENTIAL	DESIRABLE
Qualifications <i>Please state the level of education and professional qualifications and / or specific occupational training required.</i>	Trade/Technical qualifications and/or apprenticeship and experience in workshop practices and techniques.	Evidenced ability to design prototype aids using a variety of materials.
Knowledge <i>This relates to the level and breadth of practical knowledge required to do the job (e.g. the understanding of a defined system, practice, method or procedure).</i>	Experience and qualification in a trade role	Basic knowledge of the work of Occupational therapy and the requirements of clients.
Technical / Work-based Skills <i>This relates to the skills specific to the job, e.g. language fluency, vehicle license etc.</i>	Experience of working in a technical workshop environment. Clean driving licence.	
General Skills/Attributes <i>This relates to more general characteristics required to do the job effectively, e.g. effective written communication skills, ability to delegate, motivation or commitment etc.</i>	Ability to communicate with a range of professionals, clients and others involved in the care of clients, ability to advise and encourage clients to utilise facilities properly and effectively. Must be able to motivate people, instruct and assist them while they undertake	
Experience	Experience in a trade and workshop experience.	Possession of a technical Teaching Certificate and evidence of instructional

<p><i>This is the proven record of experience and achievement in a field, profession or specialism. This could include a minimum period of experience in a defined area of work if required by an external body (for example a period of post-qualification experience).</i></p>		<p>skills would be an advantage.</p>
<p>Criteria relating to Safeguarding.</p> <p><i>Other requirements needed to confirm suitability to work with children and/ or adults at risk to include skills, abilities, experience, behaviours and attitude/ motivation and values towards children and/ or adults at risk.</i></p> <p><i>Please include any responsibility for children and / or adults at risk in the role and any safeguarding responsibilities and include whether DBS vetting will be required.</i></p>	<p>Will be required to undertake mandatory safeguarding training as will be in contact with vulnerable clients and will undergo an enhanced DBS check</p>	

Personal Attributes

Delete as appropriate:

Appointees to this role will be required to adhere to and perform their duties in line with the standards identified in the States of Jersey tier 5 core accountabilities attributes and behaviour indicators.