

Senior Dietitian: Acute & Outpatient Services

Department: Health & Social Care

Division: Clinical Support Services

Reports to: Specialist Dietitian

Accountable to: Head of Nutrition & Dietetics

JE Reference: HCS1301

Grade: CS10

JE Date 11/04/2024

Job purpose

- To work as a senior dietitian to provide evidence-based nutritional interventions across the acute hospital wards and specialist outpatient clinics including (but not limited to) neurology, home enteral feeding and respiratory.
- To undertake comprehensive and holistic nutritional assessments, and initiate treatment/management plans for complex adult patients as an autonomous practitioner.
- To provide clinical supervision to junior staff within the service.
- To support senior staff with the daily running of the acute and outpatient services, including the management of the daily caseload in the senior's absence.
- To contribute to audit activity and service evaluation within own area to support senior staff and the Nutrition & Dietetic service with future strategy and policy work.
- To participate in evidence-based service development with support.
- To work closely with other members of the multi-disciplinary team to ensure effective treatment planning and patient management.

Job specific outcomes

- To be professionally responsible and accountable for a caseload of complex patients, which involves planning, implementing and evaluating patient-centred outcome-orientated treatment and management.
- To undertake comprehensive and holistic nutritional assessments, and initiate treatment/management plans for adult patients. To deliver dietetic care in accordance with Nutrition & Dietetic service standard, organisational policies, clinical governance, National Professional Standards of Practice, and the Health & Care Professions Council (HCPC) Standards of Conduct, Performance and Ethics.
- To interpret medical, biochemical and pharmacological information, and incorporate into dietetic plans as appropriate.
- To develop and produce evidence-based literature and patient resources.

- To participate in the training of student dietitians as part of clinical placements (A,B & C)
- To participate in dietetic/multidisciplinary (MDT)/ specialist team meetings and case conferences to discuss the nutritional management of patients. To interpret and inform the relevant MDT of specific national and professional evidence and policies which affect the specialist area.
- To have delegated responsibility and accountability for the triage of dietetic referrals across the acute wards and specialist outpatient services.
- Contributes to and challenges best practice for dietetic management of adults across acute wards and specialist outpatient services within specialist area.
- Highly developed communication skills are required to ensure complex medical and nutritional information is relayed in an accurate and easy to understand way to ensure patient outcomes are optimised. Communication through interpreters may be required.
- One to one dietetic counselling, group education to patients as well as group education to staff will be including in this post to ensure patients are provided with a variety of methods of nutritional therapy delivery to best meet their needs and optimise clinical outcomes.
- To attend and participate in regular dietetic team meetings to ensure engagement and interactive role within the team and services in line with professional standards.
- To support senior staff with supervision and development of junior staff including support workers, dietetic students, and newly qualified dietitians within the team in accordance with organisational policies and professional standards to ensure that all are motivated, focused and able to deliver their individual responsibilities to the best of their abilities.
- To support senior staff by contributing to clinical audits within own specialist service area, critically appraising quality, safety, efficiency, and evidence base.
- Uses relevant clinical outcome measures and associated evidence base.
- Contributes to the nutrition & dietetic department governance and quality improvement agenda. Support changes and where appropriate supports implementation by the wider team, taking into consideration the impact on other professions and departments.
- To Maintain appropriate, accurate and timely clinical and statistical data in accordance with professional standards, providing written clinical reports to external agencies to optimise multi-disciplinary and holistic patient care in line with Nutrition & Dietetic service policy, GDPR, HCPC, BDA and Jersey Data Protection Law.
- Responsible for following HCS safeguarding policy to ensure that all vulnerable adults are protected.

Statutory responsibilities

Active engagement, participation and compliance with any other statutory responsibilities applicable to the role, as amended from time to time.

The post holder will have to comply with all relevant States Laws, such as the Health and Safety at Work (Jersey) Law 1989 and any other associated legislation, Standing Orders, Financial Directions and other Codes of Practice.

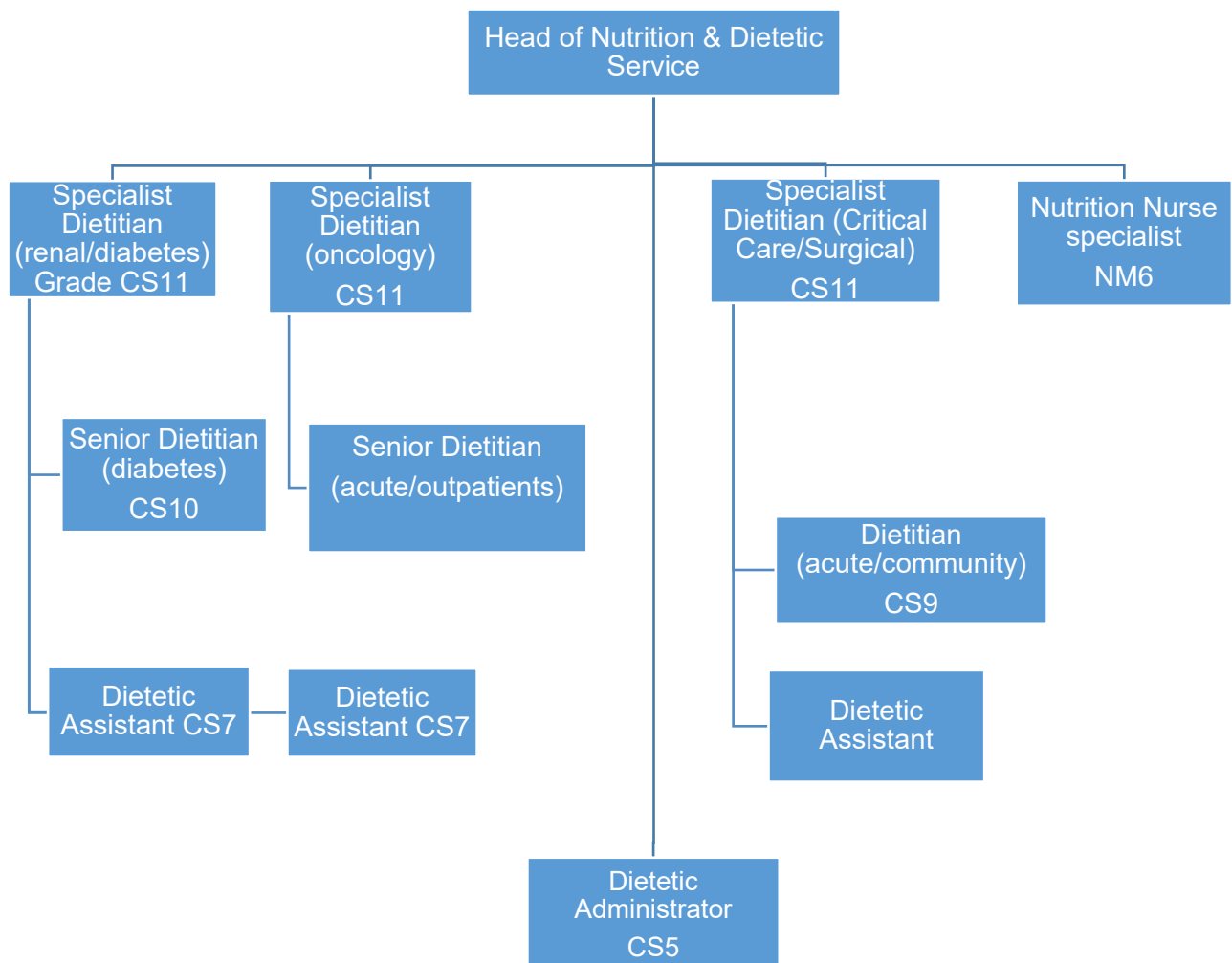
To work in accordance with the Data Protection (Jersey) Law.

Ensure appropriate communication of relevant patient information through the maintenance and updating of patient/client records in line with requirements of Clinical Governance and Quality as set out in the Standards of Practice from BDA; HCPC and HCS.

To meet all requirements of Clinical Governance (e.g. statutory & mandatory; CPD; reflective practice etc.) and propose any necessary changes to dietetic service delivery which this may give rise to.

This role is politically restricted. The job holder is not permitted to undertake political activity involving standing for election to the Government or as a Parish Constable, or publicly supporting someone who is standing for election or playing a public part in any political manner.

Organisation chart



Person Specification

Specific to the role

ATTRIBUTES	ESSENTIAL	DESIRABLE
Qualifications <i>Please state the level of education and professional qualifications and / or specific occupational training required.</i>	<p>BSc Hons Degree in Human Nutrition and Dietetics or Postgraduate Diploma/ MSc in Human Nutrition and Dietetics.</p> <p>Registration with the Health Care Professions Council (HCPC) and British Dietetic Association (BDA).</p> <p>Evidence of Continuing Professional Development.</p>	<p>Accredited post-registration training in relevant areas.</p> <p>Membership to BDA Specialist Interest group.</p>
Knowledge <i>This relates to the level and breadth of practical knowledge required to do the job (e.g. the understanding of a defined system, practice, method or procedure).</i>	<p>Specialist theoretical and practical knowledge of nutritional interventions across acute settings including enteral nutrition.</p> <p>Specialist knowledge of enteral feeding equipment and ancillaries.</p> <p>Broad professional knowledge and experience in acute and outpatient settings across patient pathways.</p> <p>Accepts responsibility and accountability for own work and can define the responsibilities of others.</p> <p>Recognises the limits of own authority within the role and seeks professional support appropriately.</p> <p>Understanding of the role of other healthcare professionals within specialist services i.e. physiotherapy, Speech & Language Therapy, Occupational Therapy, Podiatry, Specialist nurses.</p> <p>Demonstrates Codes of Conduct and Professional Standards of the Health Care Professions Council (HCPC) and British Dietetic Association (BDA).</p>	<p>Knowledge and experience of delivering quality improvement within healthcare settings.</p> <p>Understanding of HCS developments plans, new and existing services and service innovations.</p> <p>Demonstrates knowledge of legislation relevant to specialist area</p> <p>Specialist theoretical and practical knowledge of nutritional interventions across acute settings including parenteral nutrition.</p> <p>Experience of completing clinical audit/project.</p>

	<p>Understands principles of confidentiality.</p> <p>Knowledge of clinical governance and audit, and its systematic evaluation and application.</p> <p>Knowledge of Health & social Care legislation and current practice.</p> <p>Knowledge of incident and 'near miss' reporting.</p>	
<p>General Skills/Attributes <i>This relates to more general characteristics required to do the job effectively, e.g. effective written communication skills, ability to delegate, motivation or commitment etc.</i></p>	<p>Ability to work as an autonomous practitioner with flexible approach.</p> <p>Ability to work under time constraints and prioritise workload.</p> <p>Able to communicate patient related information effectively and efficiently to patients, team members, relatives and other service providers through written and verbal communication in line with professional, legal and local requirements.</p> <p>Good problem solving and analytical skills, undertaking ongoing risk assessment of a challenging environment and clinical reasoning for some complex patients with multiple co-morbidities.</p> <p>Self-motivated and able to demonstrate initiative with good leadership skills.</p> <p>Able to manage day to day operational decisions in seniors' absence.</p> <p>Able to supervise junior staff and delegate caseload appropriately.</p> <p>Committed to continuous service evaluation and improvement. Supports critical appraisal, adaptation and implementation of relevant national and international</p>	

	<p>guidelines relative to specialist area to support delivery of best practice.</p> <p>Digital/ IT skills. Proficient in the use of Microsoft office 365 and dietary analysis software.</p>	
<p>Technical / Work-based Skills <i>This relates to the skills specific to the job, e.g. language fluency, vehicle license etc.</i></p>	<p>Competent in the use of dietary analysis software and interpretation of the results.</p> <p>Competent in the use of anthropometric equipment including mid upper arm circumference (MUAC), ulna, handgrip and tricep skinfold.</p> <p>Experience of acute dietetic work across a variety of specialist areas including GI surgery, neurology/stroke and respiratory.</p> <p>Experience of outpatient/community specialist work including home enteral feeding, respiratory, neurology, complex nutrition support.</p> <p>Experience of enteral feeding equipment use i.e. infinity flocare pumps.</p> <p>Good knowledge and understanding of clinical governance and professional guidelines relating to prescribing or oral nutritional supplements in outpatient/community settings.</p>	<p>Experience of critical care dietetics.</p> <p>Experience of problem solving complex enteral feeding tube issues.</p>
<p>Experience <i>This is the proven record of experience and achievement in a field, profession or specialism.</i> <i>This could include a minimum period of experience in a defined area of work if required by an external body (for example a period of post-qualification experience).</i></p>	<p>Experience of working as a general or junior dietitian, across a variety of clinical settings and specialities.</p> <p>Minimum 12 months clinical experience within the specialist area.</p> <p>Demonstrates understanding and experience in the ethical and moral dimensions of practice.</p> <p>Experience in teaching and training other healthcare providers.</p>	<p>Experience of research.</p> <p>Experience of dietetic student training.</p> <p>Experience of project based service delivery.</p>

	<p>Experience of supervising/supporting junior or non-registered staff.</p> <p>Experience of working effectively within a multidisciplinary team.</p>	
<p>Criteria relating to Safeguarding</p> <p><i>Other requirements needed to confirm suitability to work with vulnerable people e.g. attitudes, skills, experience etc.</i></p>	<p>Registration as a Dietitian with the HCPC and Jersey Care Commission.</p> <p>Current DBS enhanced check and up to date adult safeguarding training/child protection training.</p>	

Core Accountabilities, Attributes and Behaviour Indicators

Appointees to this role will be required to adhere to and perform their duties in line with the standards identified in the States of Jersey tier 5/6 core accountabilities attributes and behaviour indicators.

Organisational structure

