

Job Title: Technical Shift Operator (TSO) Electrical or Mechanical

Department: Infrastructure and Environment

Section: Energy Recovery Facility – I & E

Reports to: Principle Shift Operator

JE Ref: IE1174

Grade: EW05

JE Date: 07.08.2025

Job purpose

To assist with running an Operations team working a rotating shift pattern at the Energy Recovery Facility. Ensure that all operations are carried out in compliance with Environmental, Health & Safety Laws, Waste Incineration Directive, Waste Management (Jersey) Law and other policies and procedures and relevant legislation. Respond to changes in operating performance and maintain stable operating conditions. Liaise with the Principal Shift Operator to ensure Operational objectives are achieved.

Job specific outcomes

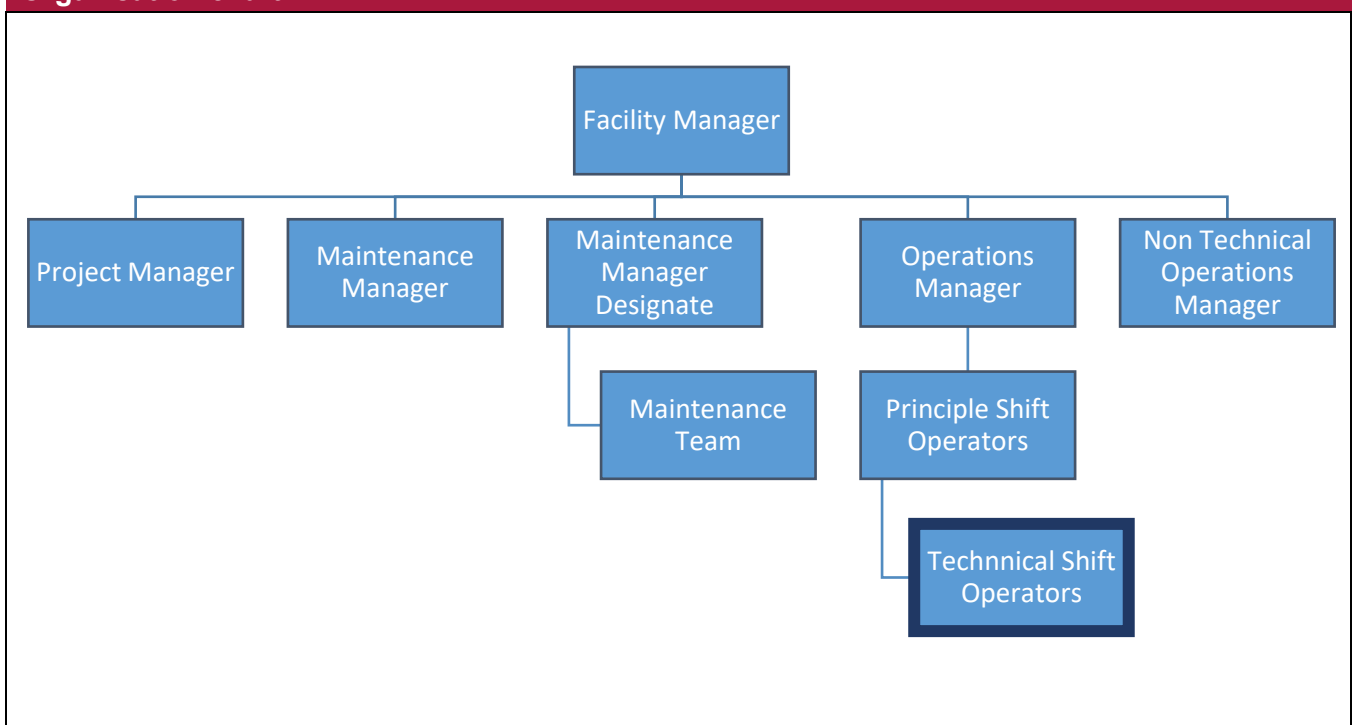
- Assist with the operating and making of operational decisions, arrange and record staff cover for shift and organise maintenance staff when required while ensuring compliance with all Environmental, Health and Safety Laws, issue Permits to Work, issue Isolation Certificates and all relevant legislation, and ensure all personnel including contractors and third parties are aware of site and process risks and comply with instructions given.
- Provide expert technical guidance and support to the Principal Shift Operator, Operations, Maintenance & Facility Managers, IHE support staff and external contractors.
- Provide ongoing training to Plant Operators in the operation of the ERF.
- Diagnose plant issues and rectify, or liaise with maintenance teams to ensure plant operation and electrical output are maintained.
- Compile operational logs, record plant performance and the use of consumables; prepare reports from information recorded on the DCS (Distributed Control System) for diagnostic and performance purposes.
- Assist, where necessary the Principal Shift Operators in the reviewing and updating operational and safety procedures (Standard Operating Procedures).
- Communicate with Jersey Electricity regarding production output, Energy Recovery Facility customers and Bulky waste Facility Operators to ensure waste is handled correctly and inappropriate loads are rejected.
- Carry out Plant maintenance, modifications and fault finding on control & instrumentation, electrical & mechanical equipment. Carry out Crane driving; forklift driving, moving Flexible Intermediate Bulk Containers, skips & hazardous chemical handling.
- Act as the Emergency First Aid at Work person on shift.

Organisational structure

Government Departments



Organisation chart



Person Specification

Specific to the role

ATTRIBUTES	ESSENTIAL	DESIRABLE
Qualifications	<p>Higher National Diploma and time served apprenticeship in either mechanical, electrical or Control and instrumentation engineering. Or another relevant qualification.</p> <p>The post holder will be multi skilled with substantial Plant Operating experience gained in a Power, Chemical or Process environment.</p> <p>Further multi skill training will be required to achieve City & Guilds Energy Recovery Plant Operators Course Level 3</p>	
Knowledge	<p>The ability to understand and interpret complex process, instrument, electrical and mechanical engineering drawings and be able to interpret complex manufacturers operating instructions to ensure safe plant operation.</p> <p>Understand the Waste Incineration Directive, Waste Management (Jersey) Law 2005 and the associated Waste Management Licence, with regards to the day to day operation of the EFW Facility.</p> <p>Authorised Person under the States of Jersey Mechanical and Electrical Safety rules to enable proper plant isolations to be put in place to enable others to work in safety on site.</p> <p>Administer IHE Site Safety Rules and controls and operates Permit to Work system for staff and contractors.</p>	

Technical / Work-based Skills	A clean and current driving licence, Trained in Fire Safety, Asbestos Handling and Manual Handling techniques	. Forklift and telehandler authorised (Training will be given)
General Skills/Attributes	Requires a working knowledge of Microsoft Office Suite including use of Excel spreadsheets. The post holder must possess mentoring skills.	The post holder is required to assist and identify gaps in team member's skills and knowledge and in conjunction with the Operations Manager highlight training needs. Training is often given by the post holder "on the job".
Experience	Previous experience in working in similar power, chemical or process environment.	