

Pathway 2050 Energy Plan



**Year 2(2016)
summary
& Year 3 (2017)
action plan**

States 
of Jersey

Contents

Contents	2
Introduction and context	2
Emissions impact analysis	2
Policy clusters	5
Appendix A – detailed year 2 summary and year 3 action plan.....	13

Year 3 plan agreed and published March 2017.

Introduction and context

The purpose of this document is to follow on from the year 2 summary report by outlining the priority areas of action and the associated tasks for delivery of year 3 of the Energy Plan.

This report is structured as a signposting document. It provides an update on the progress within the three policy clusters and key actions as identified in the year 2 plan. The appendix provides a table of progress against each of the action statement areas within the energy plan. It provides links to published information and outputs that have been completed in relation to the action statement areas. The table includes the actions for year 3.

As stated in the energy plan a 5 year review of progress against the targets and impact will be published in 2020. Annual update reports will continue to be produced in the interim. Headline numbers have been included in the policy cluster updates in this report. It is not yet possible to determine progress against 2020 targets as the emissions inventory data is from 2015 and many projects are under development and are not yet delivering emissions reduction. For example, the impact of the changes in building bye laws will only be measurable as development takes place.

Emissions impact analysis

Headlines

- 47% decrease in greenhouse gas emissions by end of 2015 against 1990 levels.¹
- Reduction in use of kerosene for space heating in domestic & commercial sectors.

¹ For the purposes of Kyoto reporting the data is not weather corrected.

The impact of the energy plan is monitored through two important information sources, the annual greenhouse gas emissions inventory and the Jersey energy trends.

The information used to compile the emissions inventory is provided by Island fuel suppliers and is submitted to the UK emissions inventory experts for independent analysis and verification². The provision of this information is a requirement of the UK's Kyoto progress reporting. The Jersey inventory is extracted from the compiled information and returned for publication 12 months after submission. This is due to the extensive quality assurance and verification process which is carried out by Aether in line with international emissions reporting standards.

The Jersey emissions inventory is published in the form of an infographic. In 2016 the infographic was improved to include jurisdiction comparisons. The 2015 emissions inventory was received in February 2017 and shows a 47% decrease in emissions compared to 1990 levels. The updated infographic will be published in March 2017 and will include annual mean temperature data, which is not accounted for in the international inventory.

Jersey's annual GHG emissions in 2015 were 320 kt CO_{2eq}. Information published by the UK Office of National Statistics enables comparisons to be made between Jersey's total emissions with other geographic locations. The information shows that Jersey's emissions are of a similar scale to the emissions from the Weymouth and Portland local authority district. The reported emissions from commercial, domestic and industry sectors in 2014 were 331kt CO_{2eq}³. The population of Weymouth and Portland was 52,168 in 2014⁴. This reflects the fact that emissions per capita in the UK are approximately double that of Jersey. The global target agreed at the COP21 in Paris to avoid 1.5°C of warming is 4.8 tCO_{2e} per capita by 2030, which assumes a global population of 8.2 billion⁵ and global emissions of 39 GtCO_{2e}. Jersey's emissions per capita in 2015 were approx. 3.5 tCO_{2e} per capita.

It is also interesting to compare Jersey's emissions with those from large UK companies. From the reporting which is a requirement of the UK carbon reduction commitment⁶, the John Lewis Partnership (including Waitrose)

² The UK emissions information for overseas territories and crown dependencies is compiled by Aether <http://www.aether-uk.com/>

³ <https://www.gov.uk/government/collections/uk-local-authority-and-regional-carbon-dioxide-emissions-national-statistics#2016>

⁴ <https://www.dorsetforyou.gov.uk/article/343610/Weymouth-town-profile>

⁵ http://www.un.org/esa/population/publications/WUP2005/2005WUP_FS4.pdf

⁶ <https://www.gov.uk/government/publications/crc-annual-report-publication-201415-and-201516>

reported emissions in 2015 of c.359 kt CO_{2eq} and the reported emissions from Marks and Spencer PLC were c. 330 kt CO_{2eq}.

The 2015 emissions inventory shows the increase in emissions that occurred in 2013-2014 was due to on-island power generation following the failure of sub-sea connectors. The return to importing electricity in 2015 resulted in a marked decrease in emissions from the energy generation sector. There were also reductions in emissions in both the domestic and commercial sector as a result of a reduction in the use of kerosene for space heating. This reduction is likely to be as a result of the combined impact of an increase in use of electricity for space heating purposes, particularly in new build apartments, increased energy efficiency measures and replacement of older boilers with more efficient new models, and also 3 years of warmer winters.

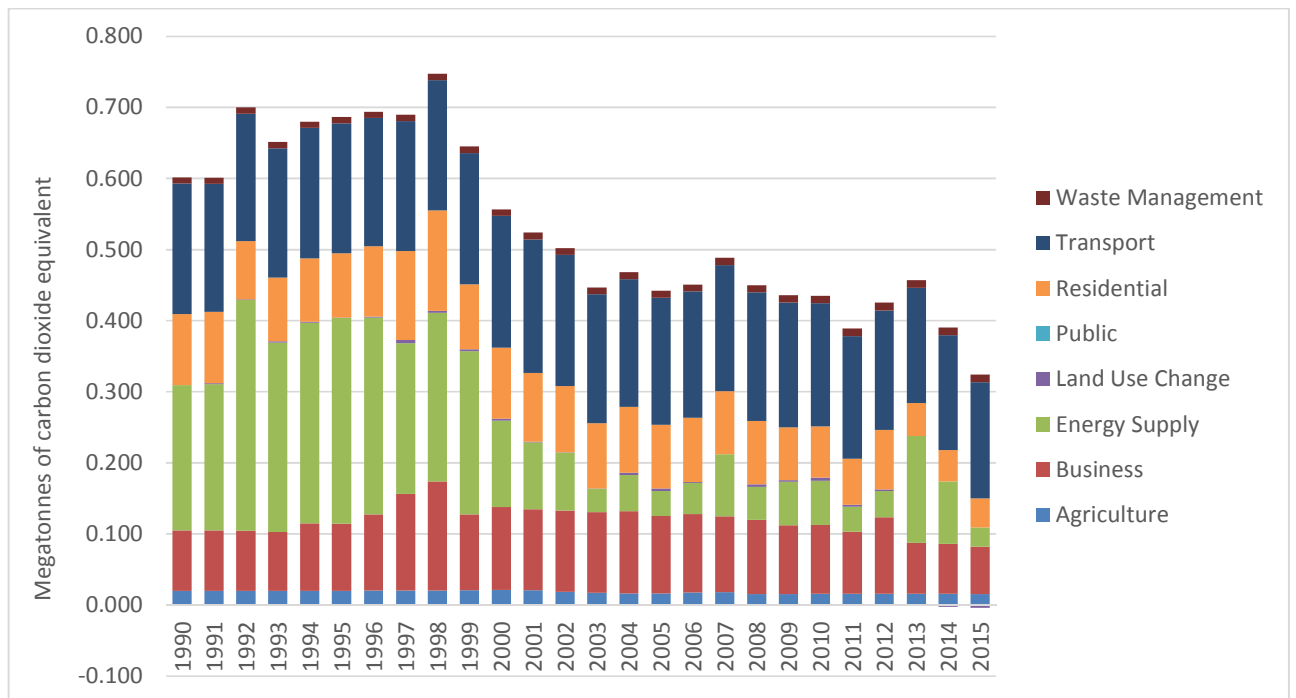
Energy trends is published by the SoJ Statistics unit using product information provided by the fuel suppliers. The 2011 to 2015 energy trends report⁷ shows the reduction in use of kerosene for space heating as reflected in the emissions inventory. There was a small decrease in petroleum products for road transport which is interesting as the total number of vehicles registered has remained static. This indicates the impact within the marketplace of more efficient and low emission vehicles becoming more readily available.

The actions which have contributed to the sectoral emissions reductions within the policy clusters are included within the relevant sections of this report.

Greenhouse Gas Inventory (1990-2015) by Sector

Preliminary graph to be updated to bring JE plc data into calendar year consistent with other data. JE plc information currently based on September to September reporting.

⁷ Insert link when updated one is published



Policy clusters

An emissions impact analysis was carried out. This assessment identified three priority areas for implementing demand management actions. The following sections of this report provide an update on the key actions that were identified for 2016 and sets out the revised actions for 2017. The policy clusters include the 5 year review-term targets for 2020, which were identified in the Energy Plan model.

Domestic policy cluster

The majority of savings are expected to come from improving energy efficiency in the existing housing stock.

Headline numbers

- 4000 Andium properties changed to electric heating, saving 1 million litres of oil per annum, equivalent to 2554 tonnes CO_{2eq}
- 1700 private homes insulated through energy efficiency service, saving 1374 tonnes CO_{2eq} every year (validated figures by the Energy Saving Trust)
- The community buildings programme has through subsidised energy efficiency measures for not -for-profit community buildings, delivered carbon savings of 260 t/CO₂ per year (figures validated by the Carbon Trust)

Year 2 key action	Summary of progress in 2016
Housing stock analysis	Researched information available from Andium, environmental health and planning on housing stock; full stock analysis not able to be completed due to lack of available information; further interrogation would not add sufficient value to warrant resources required at this stage.
Develop and pilot training for able to pay sector	Initial development and scoping took place with BRE and local training providers. Project paused whilst UK finalised revised certification schemes and proposed introduction of new Quality Mark.
Finalise BBLs following industry consultation and apply to new applications	Building bye law consultation completed and finalised version published and implemented in July 2016.
Communications and outreach programme	Targeted social media campaigns providing energy saving advice. Energy telephone hotline continued to operate to the EST verified standard.
Set standards for rental sector via a 'Rent Safe' accreditation scheme	Environmental health function transferred to Minister for Environment in 2016. Rent safe programme piloted and introduced in 2016 and includes energy efficiency requirements at level 5.
Continuation of reduced community building energy efficiency programme	Programme continued, projects identified with a total value of £150k and assessed for eligibility and energy saving payback. Installations not fully completed by end of year due to lack of resource availability in not for profit sector.

Year 3 key actions

2017 ACTIONS



- Commission and deliver energy assessor training for local marketplace, based on revised UK Quality Mark standard.
- Continue to deliver energy and carbon reductions through the community buildings programme.
- Monitor impact and take up of Rent Safe programme.
- Monitor impact of revised building bye law standards.

Commercial & government policy cluster

The emissions in this category arise from heating activities; transport emissions are not included in the calculations for this category and are accounted for in the transport policy cluster.

Headlines

- 186 eco active businesses members of updated programme
- 17 eco active business leaders, achieving ISO14001 or equivalent
- Use of kerosene by the States of Jersey energy has decreased by over 1m litres of oil between 2013 and 2016, due to the Andium housing improvement programme of reduction as reported in the domestic policy cluster.
- There has been an accumulated reduction of over 12 million kWh of electricity used by the States of Jersey since 2010; whilst reductions in electricity use do not contribute to on island emissions reduction, reducing energy use does contribute towards affordability and security policy goals.

Year 2 key action	Summary of progress in 2016
<p>Eco active business programme, engagement and support for largest emission sectors. Key sectors:</p> <ul style="list-style-type: none"> • Hotel & hospitality; agriculture; care & residential homes • Small and micro businesses and retail sector • Large sites and facilities management network 	<p>A revised programme was delivered offering bespoke support and intensive communications including development of a regular newsletter, production of case studies of good practise, development of network and delivery of lunch and learn events. These were targeted at the key sectors, however, the uptake from the businesses within these sectors was extremely limited and was not necessarily from high hydrocarbon users. Further analysis was undertaken to verify the sectors and confirmed the need to investigate different policy routes to achieve savings.</p>
<p>Review States of Jersey approach to implementing eco active states</p> <ul style="list-style-type: none"> • Energy and facilities management of property portfolio and leased properties 	<p>Jersey Property Holdings and Treasury Department continue to collect and collate energy use data for internal reporting and for the annual sustainability report to accompany the financial accounts.</p> <p>Continuing to roll out improvements across the property portfolio including upgrading</p>

<ul style="list-style-type: none"> • Integration into 2017 business planning • Annual sustainability report published with accounts 	<p>existing stock e.g. Cyril le Marquand House windows improvements and the implementation of an LED lighting programme across the estate.</p> <p>All departments implement an ongoing eco active action plan focussing on behaviour change.</p>
---	--

2017 ACTIONS



- Following the experiences from the eco active business energy pilot project, reassess and focus engagement for the business sector where cross compliance can be achieved to ensure delivery of emissions savings. For example, integrate with LEAF through revised Rural Economy Strategy, target 41 farms accredited with energy action plans by 2019. Receipt of agricultural subsidies will be dependent on LEAF accreditation.
- Research applicability of Sustainable Restaurant Association membership for Jersey hospitality sector and catering operations which are a high emission sector.
- Monitor impact of the revised building bye laws on the commercial sector, particularly in terms of the impact of consequential improvements on retrofit.
- Investigate how life cycle costing can be applied to States of Jersey strategic infrastructure projects and the implications on current operating procedures.
- Continue to monitor and publish States of Jersey annual energy use in line with annual accounts.

Transport policy cluster

The actions in relation to the transport policy cluster are closely aligned with the ongoing delivery of the sustainable transport policy. The majority of savings are anticipated to come from an increasing number of low emission vehicles replacing older higher emission vehicles over time.

Headline numbers

- Slower than forecast uptake of electric and hybrid vehicles, with 2% of all vehicles registered in 2016 being in this category. Between 2011 and 2016, 224 electric vehicles and 439 hybrid vehicles were registered.
- An additional 8% of vehicles registered in 2016 were less than 100g CO₂/km, which is a decrease for this emissions category compared to previous years.
- 348 electric bikes were purchased through Car2Cycle scheme in 2016 to contribute towards a reduced number of commuter trips made by car.
- Increase in bus use at peak times of 33% between 2010 and 2016; 22% overall.
- Reduction in fleet vehicle fuel by States of Jersey of 53,000 litres of road fuel used per annum between 2013 and 2016, equivalent to approximately 121 tonnes CO_{2eq}⁸.
- Energy trends 2011-2015 reports fuel used for road transport has remained static in this period.⁹

Year 2 key action	Summary of progress in 2016
Vehicle profile analysis	Driver Vehicle Standards monitor vehicle registrations by emissions band and report this information on an ongoing basis to DoE.
Implement changes to VED bands as agreed in medium term financial plan	Completed. Data shows rate of uptake of ultra-low emissions vehicles is slower than anticipated and the number of hybrid vehicles registered has increased.
Investigate opportunities and incentives for a low emission vehicle pilot programme with stakeholders	DoE facilitated Jersey Post and Jersey Electricity partnership project to purchase 15 electric vans for Jersey Post fleet use. Dfl launched a subsidised electric bike scheme Car2Cycle.
Eco active business events programme for fleet vehicle users	Driver training programme implemented in partnership with police, DVS and Dfl.
Continue with sustainable transport policy and programme	Travel plan officer left SOJ in October 2016; Dfl transformation programme will determine future

⁸ <https://www.gov.uk/government/publications/greenhouse-gas-reporting-conversion-factors-2016>

⁹ Link to be included when energy trends report published

of bus service improvements, encouraging active travel & development of green travel plans and implement series of road safety measures.

development and delivery of sustainable transport policy and actions.

2017 ACTIONS



- Continue to monitor vehicle registration data to understand trends following changes to VED introduced in 2016.
- Develop partnership projects with key stakeholders e.g. Liberty Bus
- DFI transformation programme will take a more focused and evidence based approach to applying resources e.g. more personal travel planning or different delivery models for outreach. Ongoing work will ascertain what the most efficient interventions are to obtain the maximum modal shift, environment and road safety benefit.
- Continue to develop sustainable transport routes e.g. St Peter Valley's path, West Park Cycle and Bus Improvements, the Harbour Heads Cycle Link and the St Clement's schools cycle route.

Cross cutting policy clusters – update

Long term planning & LOW CARBON JERSEY



The States of Jersey Strategic Plan 2015-2018 commits to developing a long term plan, providing a 20 year 'Vision for Jersey' and planning horizon for sustainable development. See gov.je for full details.

In 2017 publish the Jersey Vision for consultation. Climate change is recognised within the vision as a global driver impacting on all outcome areas.

In 2017, a climate risk assessment will commence which will inform the development of shoreline management plans, based on data gathered using internationally agreed standards and scientific assessment.

Energy Security



Continue to engage with local energy market on a number of issues including energy resilience.

Law drafting for offshore renewable energy legislation in order to provide a framework for the long term development of utility scale renewables. This work stream includes scoping the requirement for a revision of the 1937 Electricity Law.

Continue to engage with existing and potentially new cross-jurisdictional networks.

Consider recommendations from 2013 security of supply report in light of public sector reform and CICRA review findings.

Fuel poverty £££

Continue to engage with local energy market on a number of issues including energy affordability.

Continue to deliver the community buildings programme.

Appendix A – detailed year 2 summary and year 3 action plan

Governance and policy development										
Sector	Activity area	Yr 1 update	Yr2 task	Yr 2 update	Yr 3 task	Lead	Stakeholders	AS	Evidence	Link to further information
Governance and policy development	Corporate Governance/ Energy Partnership	Understanding roles, developing mandate with CoM, establishing stakeholder group and working patterns.	Energy executive programme of meetings and political oversight and policy development	<i>The Executive met in February 2016 and considered a report from the energy forum which noted that the Form would report back on the micro renewable energy project by October 2016. The exec also considered a proposal from JE to incentivise the take up of electric vehicles. The Executive had input into the official response to the St Brieuc wind farm public inquiry led by the Minister for Environment. The political priority for the latter part of the year was the development and approval of the medium term financial plan for 2017-2019. The Treasury Minister made a commitment to provide additional resources for climate change preparedness work to commence in 2017.</i>	Review and revise the terms of reference of the Energy Executive potentially to include climate change and Brexit implications. Consider the nature of the relationship with the energy Forum.	DoE	Council of Ministers / Scrutiny	1	Link to treasury minister 2017 budget speech	https://www.gov.uk/News/Speeches/Treasury/Pages/Budget2017SpeechtoAssembly.aspx
			Energy forum - programme of work including participation in consultations, events and meetings	<i>An ambitious programme of activity beyond the 2 meetings required by the terms of reference was agreed between the Department of the Environment and the forum. In practise it proved difficult for scheduled meetings to be attended by a wide enough range of members of the Forum, therefore the programmed meetings were ultimately cancelled. The forum produced a collated</i>	Energy forum to meet, elect new officers and to deliver micro renewables report and consider activities for the year in line with the agreed terms of	Energy Forum	Energy Executive	1	Summary of responses to BBL consultation	https://www.gov.uk/sitecollectiondocuments/planning%20and%20building/id-%20consultation%20findings%20and%20response%202016%20document

				<i>response to the building bye law consultation in Q2 2016. The micro-renewables subgroup did convene and commenced work as agreed with the Energy Executive. The report had not been completed by the end of the year. Resignations were received from the Chair and Vice Chair of forum in December 2016, and another member resigned during the year due to health reasons.</i>	reference of the Energy Forum					%2020161804%20mm.pdf
Data management	Energy Trends and Kyoto reporting	Data collection	<i>DoE collated data then this task was handed back to Statistics team to coordinate; value of energy trends was recognised, delays in verifying and publishing data.</i>	Request updated report from Stats and agree timescale to produce 2016 report	DoE	Fuel importers	1	Energy trends	https://www.gov.je/environment/generateenergy/pages/energy.aspx	
		Review assumptions and compile fuel product return	<i>Completed</i>	Statistics Unit to coordinate with fuel suppliers and liaise with Aether	CMD	Aether and key industry stakeholders	1			
		Evaluate LULUCF emissions savings specifically in relation to soil management	<i>Completed</i>	no further action required	DoE and Aether	Energy Forum	1,10	Report on gov.je	https://www.gov.je/government/pages/statereports.aspx?reportid=2770	
			<i>Evaluate F gas emissions as additional data examination</i>	no further action required	DoE and Aether	Energy Forum	1,11	Report on gov.je	https://www.gov.je/government/pages/statereports.aspx?reportid=2774	

		Submit energy data to Aether in line with deadlines	<i>Completed</i>	Submit as required; ensure that annotated word document is being incorporated - sept	DoE and Aether	Aether / UK DECC	1		
		Publish updated infographic	<i>Updated and improved infographic published on Aether website and linked from gov.je to include jurisdiction comparisons</i>	Analytics show between Oct 2016 - March 2017, 169 views, Update infographic once emissions inventory verified.	DoE and Aether	Aether / UK DECC	1	Emissions inventory infographic	https://www.gov.je/Environment/GenerateEnergy/Pages/GreenhouseGasEmissions.aspx
Climate Change impacts	Climate change identification of priority areas and stakeholder engagement	Assessment of economic impacts of climate change and resilience of ecosystems services - scoping and development of brief	<i>Work stream focussed on developing greater understanding of climate risk landscape including integration with emergency planning. BREXIT had impact on ability to progress economic assessment work, this task has been rolled forward to 2017. Project work completed by NOC and Acclimatise and higher political profile obtained. Ongoing integration with Vision. Treasury commitment to support development and risk assessment work made in December 2016 as part of budget debate.</i>	Scope and commission climate risk assessment and development of shoreline management plans in partnership with Dfl. Develop communications plan and continue to work with key stakeholders. Publish climate change adaptation and resilience plan.	DoE / Dfl & CMD	All SoJ Departments and key stakeholders	1		

Emissions Category -Domestic 23% of 2010 emissions										
Sector	Activity area	Yr 1 update	Yr2 task	Yr 2 update	Yr 3 task	Lead	Stakeholders	AS	Evidence	Link to further information
Data	Stock analysis	Data gap identified	Further stock analysis.	<i>Investigated data available from Andium, environmental health and planning on housing stock; full stock analysis not able to be completed due to lack of available data; further interrogation would not add sufficient value to warrant resources required at this stage.</i>	Ongoing work with Andium to extract existing data. Outputs to be integrated with finalised SOJ decarbonisation plan AS7. Additional data still required to inform the domestic able to pay workstream.	DoE	Strategic Housing Unit Andium Stats Unit	2,3		
			Performance gap assessment.	<i>EST have analysed home energy scheme performance data. The information will identify any performance gaps between energy efficiency installations and carbon and energy savings delivered - lots of delays with EST have impacted on timelines and data validation.</i>	Complete and publish home energy scheme round up report. Review EST contract and value added.	DoE	EST Carbon Trust Utility providers	2,3	link to HES report	HES report to be published on gov.je
Owner Occupier	Development of energy efficiency scheme for able to pay sector	EU best practise review and impacts of UK green deal failure due to performance gap and low take up. Skills	Design energy efficiency survey underpinned by home energy conservation online tool.	<i>Extensive discussion took place with BRE including scoping visit and meetings with training providers. Change in certification body meant that it was not possible to finalise the Jersey scheme in 2016.</i>	Review position with BRE and certification options. Consider delivery options and run pilot scheme.	DoE	Energy Forum Industry reps EST	3,6		
			Consider updating heat loss map.	<i>Considered - not a priority until pilot scheme has run.</i>	To be considered depending on progress with pilot scheme	DoE		3,6	n/a	

		assessment. Stakeholder engagement. Carbon impact assessment from energy efficiency measures.	Develop awareness raising programme to support survey and training and pilot programme	<i>Scoping work with BRE indicated that there was not a requirement to develop a bespoke survey as the existing home energy check tool may be suitable and therefore this was not required to be developed</i>	Review home energy check tool and consider applicability use with able to pay programme.	DoE		3,6		
			Develop training package for contractors	<i>Not completed due to delays with BRE certification body following changes in UK and proposed introduction of new Quality Mark.</i>	Progress once delivery options finalised	DoE	Energy Forum Industry reps Training providers Skills Board	3	Link to UK Each Home Counts report published December 2016	https://www.gov.uk/government/uploads/system/uploads/attachment_data/file/578749/Each_Home_Counts_December_2016_.pdf
			Pilot accreditation and training programme.	<i>Not completed due to delays with BRE certification body.</i>	Progress once delivery options finalised	Training provider	Industry participants DoE Skills Board	3	n/a	
Residential not for profit community	Continue with grant programme	Review of 2010-2015 grant programme and value for money analysis based on 2010 programme objectives which placed	Continue programme targeting highest emissions buildings in order to achieve maximum carbon impact.	<i>Programme continued, significant projects identified total value of £150k and assessed for eligibility and energy saving payback. Installations not fully completed by end of year due to lack of resource availability in not for profit sector.</i>	Programme to continue, outstanding 2016 installations to be completed in Q1 2017. All new applicants required to be eco active business members. Additional applicants to be	DoE	Industry reps Contractors Carbon Trust	3,8	Information on community buildings programme	https://www.gov.uk/environment/generate-energy/energyefficiency/pages/communitybuildingsprogramme.aspx

		equal emphasis on social, carbon and economic drivers			assessed for energy saving payback in Q1 and 2017 programme to be finalised according to funds available (to be confirmed by Treasury at end of Q1)					
			Review impact at end of year	<i>Community building programme impact report produced in Q1 2016, published on gov.je</i>	Revise and update as installations mature and monitoring data becomes available	DoE	Carbon Trust	3,8	Community buildings 2010-2015 round up report	https://www.gov.je/government/pages/statusreports.aspx?reportid=2430
Rented sector – private and social	Rent safe programme	Energy efficiency market failure in rental sector due to 'split incentive'	Continue to develop voluntary landlord accreditation scheme that defines minimum standards for rented properties	<i>Environmental health function transferred to Minister for Environment in 2016. Environmental health launched rent safe programme in 2016 including energy efficiency requirement at level 5</i>	Watching brief and ongoing assessment of impact on private rented sector	DoE	DoE Strategic Housing Unit Building Control Industry reps	3,8	Information on rent safe programme	https://www.gov.je/home/rentingbuying/otherrentaloptions/pages/rentsafe.aspx
			Pilot with social landlords			DoE	Industry reps	3,8		
			Extend to all landlords			DoE	Industry reps	3,8		
			Develop legislation based on	<i>Environmental health have commenced the law drafting process</i>	Ongoing development of legislation	DoE	DoE	3,8		

			voluntary programme							
New build & refurbishment of all tenures	Revised building bye laws	Developed an upgraded SAP tool to underpin development of revised BBLs, based on electrically heated reference house. Revised BBLs will cover properties undergoing significant refurbishment or change of use Consultation Q4 2015	Consultation completed and new BBLs will be finalised	<i>Building bye law consultation completed and finalised version published in July 2016.</i>	Assessment of impacts as monitoring data becomes available	DoE	Energy Forum Industry reps BRE	2,3	Summary of consultation response	https://www.gov.je/sitecollectiondocuments/planning%20a%20building%20/id-%20consultation%20findings%20and%20response%202016%20document%2020161804%20mm.pdf
			Awareness raising with industry	<i>Completed</i>	Ongoing	DoE	Industry reps and training providers	2,3		
			Monitor number of properties impacted by revised BBLs	<i>Revised version launched July 2016</i>	Assessment of impacts as monitoring data becomes available	DoE		2,3	BBL stats when available	
	Permitted development review	Remove planning restrictions on micro renewable energy installations	Consultation completed and new permitted development order will be finalised	<i>Completed</i>	N/A	DoE	Open consultation	2,3,4,5,6	Information on when planning permission is required	https://www.gov.je/planning/building/permission/heatpower/Pages/index.aspx

		making it easier for householders to self-generate. Consultation started Q3 2015	Awareness raising	<i>ongoing</i>	N/A	DoE		2,3,4,5,6		
			Monitor number of properties impacted.	<i>Launched 2016</i>	Assessment of impacts as monitoring data becomes available	DoE	to be developed	2,3,4,5,6		
Behaviour change and awareness	Ongoing targeted campaigns to underpin domestic sector activities	Review impact of year 1 campaigns, social media reach, schools engagement activities.	Revised targeted campaigns to support specific policy interventions	<i>Targeted social media campaigns providing energy saving advice. Energy telephone hotline continued to operate EST verified standard.</i>	Develop programme to support policy interventions as developed in line with AS3 work	DoE	Education and schools Local Media Freedom media Jersey Business Visit Jersey	6		
			Review impact at end of year	<i>Analytics to inform development of future campaigns</i>	<i>Analytics</i>	DoE		6		
Emissions Category - Road Transport 27% of 2010 emissions										
Sector	Activity area	Yr 1 update	Yr2 task	Yr 2 update	Yr 3 task	Lead	Stakeholders	AS	Evidence	Link to further information
Data	Vehicle profile analysis	Information based on census data, does not account for de-registration; high rate of transfer of ownership	DVS continue to monitor and interpret data to enable comparison with UK/ EU profile	<i>ongoing - data is reported regularly by DVS to DoE</i>	watching brief	TTS/DVS	DoE Federation of motor trade	1,1 3		
			Evaluate impact of implementation of VED changes and other	<i>ongoing - data is reported regularly by DVS to DoE</i>	watching brief	Dfl	DVS, Customs, cap parks, motor	1,7, 8,1 1,1 2,1 3,1		

		c.26k per annum	measures introduced during 2016				trade federation	4,15			
Private Cars	Emissions profile of private car registrations	Economic conditions have slowed down in new vehicle registrations but there is continued vibrancy in 2nd hand market. Electric and hybrids starting to enter 2nd hand market locally. Slow penetration of new ULEVs into local market. High prices of ULEVs remain a barrier to uptake.	Implement changes in VED bands (MTFP2) to encourage take up of lower emission vehicles	<i>Completed - DVS data shows continued shift within the fleet to lower emission vehicles. Data shows rate of uptake of electric vehicles is slower than anticipated whilst the rate of purchase of hybrid vehicles has continued to grow</i>	Ongoing	Dfl	DoE, Customs	1,13	VED information	https://www.gov.je/Travel/Motoring/BuyingSellingVehicle/Pages/VehicleEmissionsDuty.aspx	
			Continue incentivised parking for low emission vehicles	<i>Incentivised parking scheme continued</i>	Review of scheme for viability	Dfl	car parks	13	Eco friendly parking information	https://www.gov.je/environment/greenerlife/travel/motoring/pages/electricfriendlyvehicles/pages/ecofriendlyvehicles.aspx	
			Work with motor trade and key stakeholders to encourage partnership working	<i>Dfl work with motor trade representatives on an ongoing basis</i>	Ongoing	Dfl	Energy forum, industry stakeholders, eco active network	8,13			
			Continue with dedicated electric charging points in public car parks	<i>Electric charging points installed in 5 public car parks</i>	Review of scheme for viability	Dfl	JE plc	13	Electric charging points information	https://www.jec.co.uk/your-home/electric-vehicles/charging-your-ev/	
			Ultra-low emission vehicles - investigate opportunities for pilot	<i>DoE facilitated Jersey Post and Jersey Electricity partnership project to acquire 15 electric vans for Jersey Post fleet use. Dfl launched subsidised electric bikes scheme.</i>	Review of performance data and evaluation of suitability for Jersey Post fleet	Dfl / DoE	JE plc, motor trade federation	13	Jersey post electric vans	http://www.jerseypost.com/electricvans/	

			incentive scheme project with key stakeholders							
Commercial vehicles	Emissions profile of commercial van registrations	Importance of assessing suitability of vehicle for logistics performance required.	Commercial operator licences - development & introduction	<i>Ongoing research for phased implementation of commercial vehicle operator licences</i>	ongoing	Dfi	motor trade federation	8, 12		
			VED changes to 2nd hand commercial vehicle reduced registration fee	<i>Completed</i>	Assessment of impacts as monitoring data becomes available	Dfi	motor trade federation, customs	12	VED information	https://www.gov.ie/Travel/Motoring/BuyingSellingVehicle/Pages/VehicleEmissionsDuty.aspx
Fleet transport	High impact from commercial and industrial operations - key area of interest from business sector		Developing partnership working through eco active network activities	<i>Driver training programme implemented in partnership with police, DVS and Dfi</i>	Evaluate impact of driver training and consider whether to extend	DoE	eco active network, motor trade federation	8,12	Link to driver training case study	https://www.youtube.com/watch?v=LwCcSycDDU
			Green travel plans - all SoJ departments by 2017; all schools by end 2015; planning requirement on developments through Island plan policy and SPG	<i>Travel plan officer left SOJ in October 2016; Dfi transformation programme will determine future delivery</i>	Ongoing review with Dfi to determine future delivery	Dfi	All states departments and schools, eco active network	14, 15, 7,8		
Modal	Public transport,	Sustainable transport policy has	Continue programme of	<i>Ongoing - service improvement award for Liberty Bus recognised increased ridership</i>	Assessment of impacts as monitoring data	Dfi	Liberty bus,	14, 15	review of travel policy	https://www.gov.ie/Government/Pages/Stat

	active travel, car share	not achieved the 15% target in peak time travel target due to range of measures implemented.	bus service improvements		becomes available		stakeholders		and recommendations published December 2015	esReports.aspx?ReportID=1798
			Continue with programme of additional cycle parking and route improvements	<i>Subsidised electric bike scheme introduced by Department for Infrastructure. Programme of cycle parking and routes continued. St Peter's valley path opened in 2016</i>	Assessment of impacts as monitoring data becomes available	Dfi	Stakeholders	14, 15	Car2Cycle scheme	https://www.gov.ie/news/2016/pages/electrichikescheme.aspx
			Implement package of road safety measures	<i>Ongoing</i>	Ongoing	Dfi	Police	14, 15		
Emissions Category - government and commercial 17.42% of 2010 emissions										
Sector	Activity area	Yr 1 update	Yr2 task	Yr 2 update	Yr 3 task	Lead	Stakeholders	AS	Evidence	Link to further information
Data	Government and Commercial stock and emissions analysis	Lack of consistent reporting data to provide accurate information on emissions	Streamlining of monitoring and reporting data across all sectors, integration with assumptions used for emissions reporting and infographics	<i>JPH provide information on energy use in buildings that they manage, further coordination required with information from Treasury and procurement. Project commenced with ISD to share energy dashboard information in Q4 2016. Need higher visibility and user uptake of energy performance data.</i>	SoJ decarbonisation plan to include improved monitoring and reporting of SoJ energy use and emissions.	DoE	T&R, DFI, GTBS, Aether, eco active network	1,7, 8	Since 2013 the annual accounts has included sustainability report	https://www.gov.ie/government/planningperformance/budgetaccounts/pages/statesofjersaccount.aspx
Industrial &	eco active business network	Gaining better understanding of sectors, lack of emissions	Upgrade client relationship management system and migrate records accordingly	<i>Completed although this task was more time consuming than expected. Now possible to interrogate client relationship management system and extract trends, however there is still limited data on impact of actions</i>	Review and revise approach to eco active business engagement.	DoE	ISD	7,8	Link to eco active business	https://www.gov.ie/environment/ecoactivebusinessnetwork/Pages/index.aspx

	governance and data collection	data and reporting, re-design of eco active business scheme in line with stakeholder feedback applying LEAN principles	Pilot carbon capture reporting tool and extend if appropriate	<i>Piloted with small group of eco active businesses</i>	Contact pilot group and request feedback; depending on findings consider next steps	DoE/ GTBS	Eco active network and suppliers/ Jersey Business	1,7, 8		https://www.gov.je/environment/ecoactive/ecoactivebusinessnetwork/Pages/index.aspx
	eco active business engagement programme	Lack of brand visibility and relevance to audience. Programme of rebranding and support underpinned by stakeholder analysis and focus groups.	Increase brand visibility through partnership working with business networks and social media channels	<i>Revised programme delivered including development of regular newsletter, production of case studies of good practise, development of network and delivery of lunch and learn events</i>	Analytics to be reviewed to assess impact of programme.	DoE	Freedom media, business networks	8	Link to eco active campaigns pages	https://www.gov.je/Environment/Ecoactive/Campaigns/Pages/home.aspx
			Facilitating and enabling knowledge transfer		Include targeted lunch and learn sessions in eco active calendar of events for 2017	DoE	Energy Forum and other business networks	7,8	Pilot report available on gov.je	https://www.gov.je/government/pages/statereports.aspx?reportid=2775
	Priority sectors & bespoke support	Identified target sectors with highest emissions savings and gained understanding their	Programme of events/ communications for target sectors equivalent to 1 per calendar month:hospitality, residential	<i>Programme of lunch and learn events, participation from businesses.</i>	Review and revise approach to EAB engagement using outputs from JLR and LJ reports including revising budget allocations Integrate with	DoE	eco active network and suppliers, Jersey Business	7,8, 10		https://www.gov.je/Environment/Ecoactive/EcoactiveBusinessNetwork/Pages/index.aspx

		drivers e.g. hospitality sector, agriculture, residential and care facilities & large footprint organisations	and care, large footprint organisations		LEAF for agriculture sector.					
		Assess requirements for support for other sectors e.g. small micro businesses, retail sectors		<i>Development of environmental awareness tool with Law At Work team and follow on environmental legislation tool - initial take up appeared positive - need to promote and monitor</i>	Ongoing rollout of online tools and monitoring of takeup to assess impact	DoE	Jersey Business, social research company	8	Online training tool can be accessed via request to eco active or law at work	link available on request via ecoactive@gov.je
Public sector	States of Jersey departments and property portfolio	Public sector reform has slowed progress, staff morale and engagement has become extremely difficult	Data - monitoring and collation of management information	<i>JPH and Treasury continue to collect and collate energy consumption data for internal reporting and for the annual sustainability report to accompany financial accounts. Project started with ISD to get energy dashboards on to common IT platform to enable data sharing</i>	Collate data and review options	DoE/T&R/CMD		7, 1	Since 2013 the annual accounts has included sustainability report	https://www.gov.je/governments/planningperformance/budgetaccounts/pages/statesofjerseyaccounts.aspx
			Energy and facilities management of property portfolio and leased properties	<i>Resource constraints in Q1 and Q2 hindered progress with implementation of a coordinated programme of action.</i>	Review programme for 2017	JPH	DoE and all departments	7		
			Integration of eco active into 2017 business plans	<i>Departmental eco representatives have been identified and where relevant have integrated eco active into internal practise.</i>	Ongoing	DoE/CMD	Eco network, Policy group	7		
			Staff engagement in	<i>Programme revised following departure of contract provider in Q1,</i>	Ongoing	DoE/JPH	Eco network	7,8		

			eco active states programme to bring about behaviour change	<i>focus was on providing access to eco active business resources and improving internal communications through an online collaboration space.</i>						
			Annual eco active performance report published and sustainability report in annual accounts	<i>Published March 2016 on gov.je</i>	Planned for end of Q1 2017	T&R	DoE, CMD	7,8	Eco active states annual reports are published on gov.je eco active business pages	https://www.gov.je/Environment/Ecoactive/EcoactiveBusinessNetwork/Pages/MembersLeadersList.aspx
			Review solid and liquid waste policy approach	<i>transformation programme has not progressed- uncertainty</i>	Watching brief - ensure contingency in place to be able to respond if needed	Dfl	DoE	17	New household recycling centre opened January 2016.	https://www.gov.je/environment/wastereducereuserecycle/athome/pages/la-collette-household-reuse-and-recycling-centre.aspx
Security of supply										
Sector	Activity area	Yr 1 update	Yr2 task	Yr 2 update	Yr 3 task	Lead	Stakeholders	AS	Evidence	Link to further information
Security &	Energy resilience	Review of emergency planning officer	Revisit recommendations from 2013 report in light of	<i>n/a</i>	<i>n/a</i>	DoE	EDD, CICRA, Utility companies	19, 20		

	strategy	function, CICRA energy market review findings, hydrocarbon security standard is appropriate at 5 days. Electricity supply standard defined in accordance with JE plc infrastructure programme (n-1), long term contract in place for low carbon electricity importation	public sector reform and CICRA review findings	<p><i>Ongoing scrutiny of energy markets included completion of gas market study by economic advisor and Oxera. Analysis of JE availability charge for embedded energy generators.</i></p>	Continued work with energy providers to ensure secure, sustainable, affordable energy	DoE	EDD, CICRA, Utility companies, Jersey Consumer Council	19, 20, 21	Gas market report published January 2017	https://www.gov.je/news/2017/pages/oxera-gasreport.aspx
	Energy from waste	Waste strategy review not completed, recycling targets not yet revised.	Input to solid waste strategy review and define revised recycling targets and calculate carbon impacts.	<p><i>Solid waste strategy review not finalised. MTFP included instruction for the introduction of commercial waste charges. DfI developed household reuse and recycling centre and there was an increase in the number of parishes providing kerbside recycling facilities which will drive up the recycling rate</i></p>	Development and implementation of commercial waste charging regime. Resolution of Bellozanne covenant.	DfI	DoE, industry stakeholders	23		

	Utility Scale renewable energy	Seabed ownership clarified. Delay in access to contracts for difference. Resolution needed on access to statistical transfer. Focus on existing French proposals.	Update law drafting instructions in order to progress drafting for local legislation in 2017.	<i>Commissioned Burgess Salmon to develop policy and law drafting instructions, extensive piece of work with high demands on staff time, input from LOD and other key depts through policy workshop.</i>	Deliver law drafting instructions and drafting will commence	DoE/EDD	Law Officers	19, 22		
			Continue to develop and engage in existing and new cross jurisdiction networks e.g CIMREG, BIC, OUEM, BDI	<i>Ongoing work with CIMREG and BIC. BIC have combined grid and marine renewables working groups into one energy group. Jersey worked closely with French St Brieuc wind farm public inquiry and submitted formal response alongside responses from the public of Jersey</i>	Input into new BIC energy group. Political summit meeting of CIMREG reps. Continued work re St Brieuc windfarm planning process.	DoE, EDD	JE plc, Energy Forum, industry stakeholders	19, 22	link to St Brieuc windfarm information	https://www.gov.je/news/2016/pages/windfarminquiry.aspx
Fuel poverty and affordability										
Sector	Activity area	Yr 1 update	Yr2 task	Yr 2 update	Yr 3 task	Lead	Stakeholders	AS	Evidence	Link to further information
Competition & Affordability	Understanding affordability and impact of market competition on prices.	Concern raised at political level with regards to energy pricing leading to CICRA review being undertaken	Consider findings from CICRA review when completed, with particular reference to fuel poor and develop appropriate policy response.	<i>Work focussed on function of local energy markets and impacts on consumers.</i>	Workstream will be combined with energy security and resilience work on energy markets, legislation review and BREXIT implications	CMD/Social Security / DoE	CICRA, HSSD, Jersey Consumer Council, industry stakeholders	26, 27		