

Registered Actively Seeking Work April 2013

Statistics Unit: www.gov.je/statistics

Summary

On 30 April 2013:

- on a seasonally adjusted¹ basis, the total number of people registered as actively seeking work (ASW) in Jersey was²³:
 - 70 lower than a month earlier, the largest monthly decrease for almost two years;
 - 20 lower than the average for the preceding three months;
- the non-seasonally adjusted ASW total was 1,930; this latest monthly total is:
 - 120 lower than a month earlier, representing the first monthly decrease for more than six months and the largest monthly decrease for more than two years;
 - 190 higher than a year earlier (April 2012) and more than double that of four years ago (April 2009);
- **long-term registered ASW** (registered for more than twelve months) accounted for a fifth of total ASW and was at the highest level recorded to date;
- 260 **teenagers aged 16-19 years** were registered as ASW, 30 fewer than a month earlier; 110 teenagers were on the Advance to Work scheme.

Introduction

Data on people registered as actively seeking work in Jersey is compiled and administered by the Social Security Department. The Statistics Unit independently analyses this anonymised data and publishes a monthly report.

When interpreting the numbers presented, it should be kept in mind that there is no legal requirement for all unemployed residents of Jersey to register as actively seeking work (ASW) with the Social Security Department. The numbers shown constitute an informative set of indicators of the level and characteristics of individuals actively seeking work in the Island at the specified point in time.

The internationally comparable unemployment rate (as defined by the International Labour Organisation, ILO) is measured for Jersey through the Annual Social Survey or the Census. The ILO unemployment rate on 27 March 2011, measured by the 2011 Census, was 4.7%; this rate corresponds to 2,570 people being unemployed at that point in time.

The numbers of people registered as ASW include people who are on the Advance to Work, Advance Plus and Workwise schemes (see Note 1). The ASW figure will also include individuals who are working less than the 35 hours a week required under the terms of Income support; such individuals will be working and actively seeking working simultaneously.

¹ Seasonal adjustment is a statistical technique which enables examination of the underlying behaviour in a series of data by removing variations associated with the time of year, e.g. Christmas, Easter, academic year.

² ASW numbers presented in this report are rounded independently to the nearest 10.

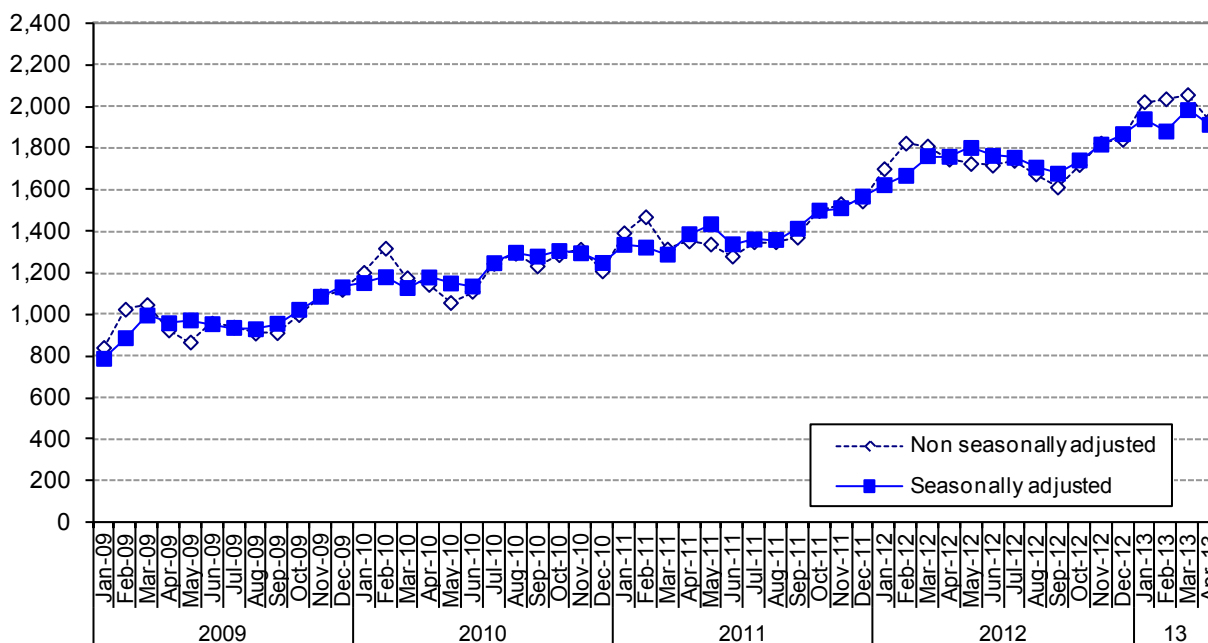
³ When placing the figures contained in this report in a historical context, it should be recognised that there have been significant changes in the criteria relating to registered ASW in Jersey in recent years. In particular, the introduction of Income Support in 2008 has led to a higher proportion of individuals who were actively seeking work being included in the registered figures.

Registered Actively Seeking Work

On 30 April 2013, 1,930 people were registered with the Social Security Department as actively seeking work (ASW). Almost three-quarters (72%) of people registered as ASW on this date (1,390 individuals) were receiving Income Support⁴.

Figure 1 shows the total number of people registered as ASW at the end of each month since January 2009 (monthly data are shown in Appendix Table A1). The total number registered in April 2013 was 120 lower than a month earlier (March 2013), and constitutes the first monthly decrease in total ASW recorded for more than six months and the largest monthly decrease for more than two years. The latest total ASW was 190 higher than a year earlier (April 2012) and more than double that of four years earlier (April 2009).

Figure 1 – Total number of individuals registered as ASW, Jan 2009 – Apr 2013



The seasonally adjusted series of the total registered as ASW, in which seasonal and calendar effects are removed, is also shown on Figure 1. From this perspective, the total number of people registered as ASW in Jersey in April 2013 was:

- 70 lower than a month earlier (March 2013), representing the largest monthly decrease (on a seasonally adjusted basis) for almost two years (since June 2011)
- 20 lower than the mean for the preceding three-month period, January to March 2013.

Registered ASW by age

On 30 April 2013, more than a quarter (26%) of all people registered as ASW were under the age of 25; around one in eight (13%) of the total were teenagers aged 16-19 years.

Figure 2 shows the numbers registered as ASW by age of individuals for the last five months, from December 2012 to April 2013.

In the latest month, all age groups below 60 years of age recorded decreases compared with the previous month. The largest decreases were recorded for teenagers and for 25-29 year olds, both groups seeing a decrease of 30 in the latest month.

⁴ The total number of adults receiving Income Support and not working will be greater than this figure, which represents the number of people receiving Income Support who were registered as ASW on 30 April 2013.

Figure 2 – Individuals registered as ASW by age, Dec 2012 – Apr 2013

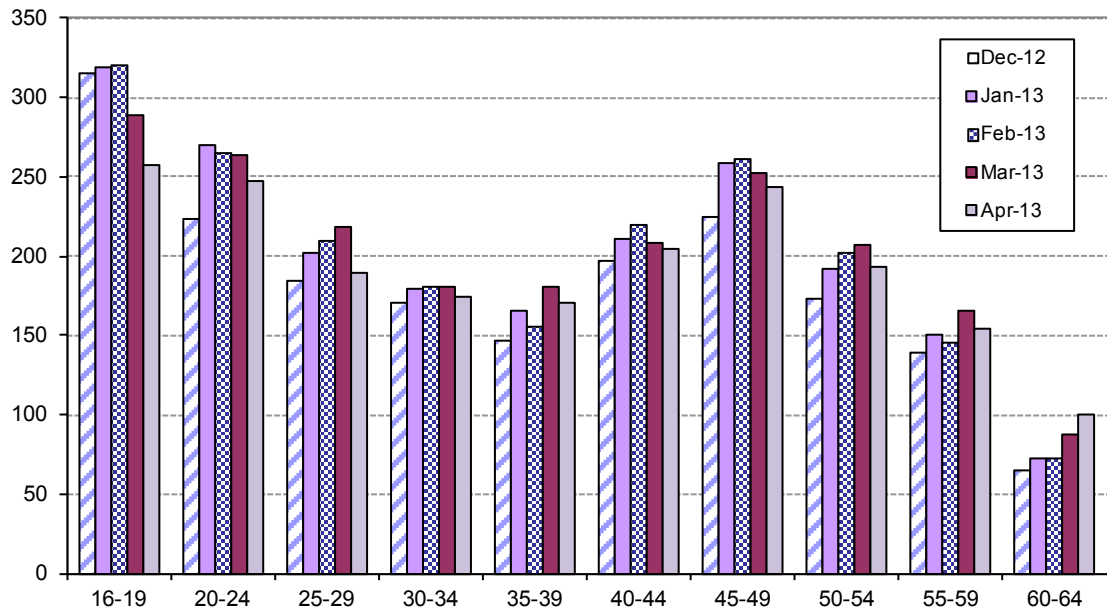
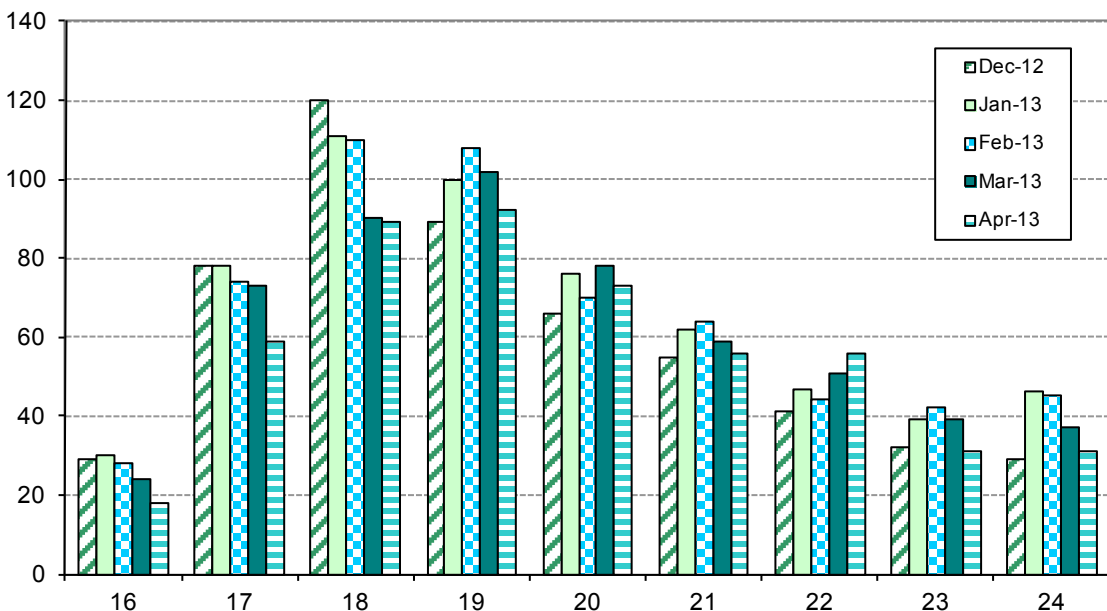


Figure 3 shows the age distribution for people under 25 years of age who were registered as ASW in the latest five months, from December 2012 to April 2013. As in previous recent months, the greatest numbers of people registered as ASW at the end of April 2013 were for ages 18 and 19 years⁵.

Of the 260 teenagers (aged 16-19 years) who were registered as ASW at the end of April 2013, 110 were on the Advance to Work scheme.

Figure 3 – Individuals under the age of 25 registered as ASW, Dec 2012 – Apr 2013

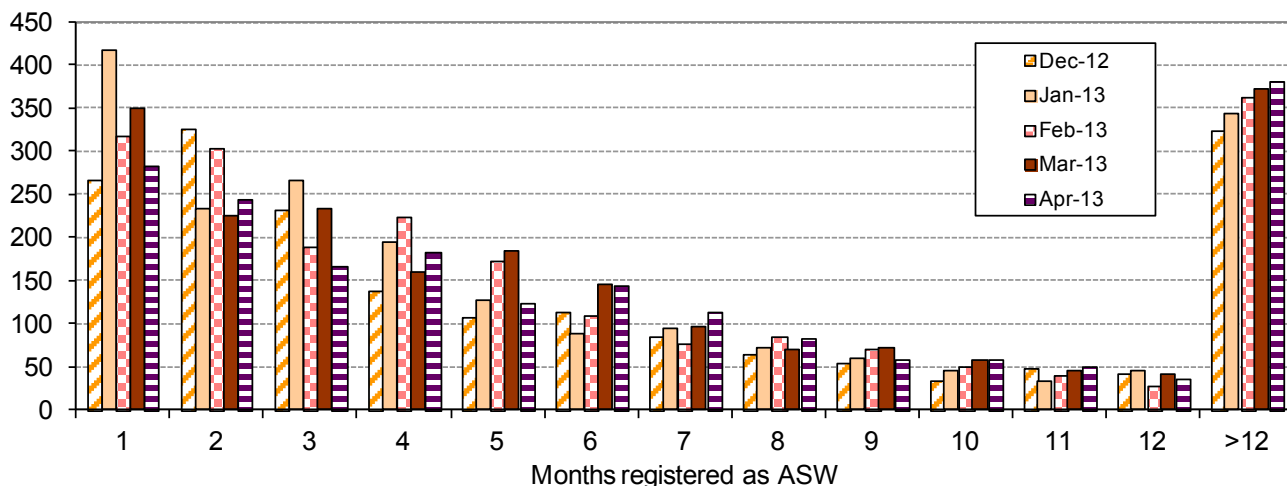


⁵ It should be acknowledged that a change to the Income Support criteria in September 2011 meant that individuals aged 16-18 who do not live in an Income Support household no longer receive the adult component of Income Support in their own right and as a result are not required to register as ASW.

Duration as ASW

More than a third (36%) of all people registered as ASW on 30 April 2013 had been registered for three months or less – see Figure 4.

Figure 4 – Registered ASW by length of period registered (months⁶), Dec 2012 – Apr 2013



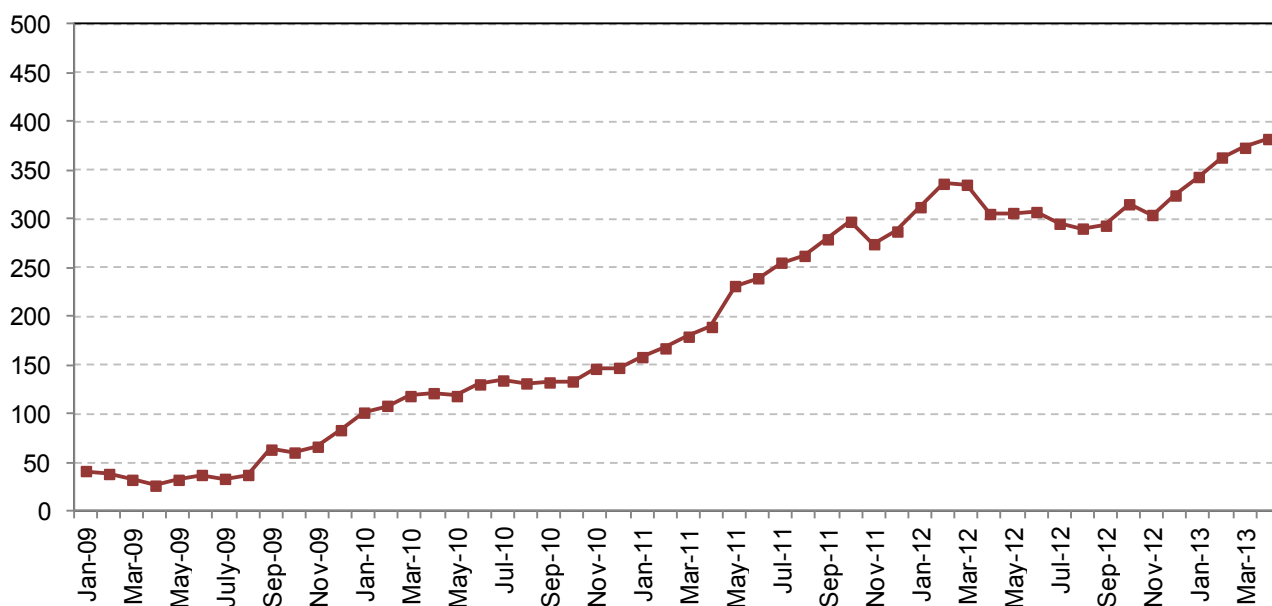
280 people had registered as ASW in the latest month, about 70 fewer than in March 2013. The latest number of new registrants is 40 greater than in the corresponding month of the previous year, April 2012, and 130 greater than in April 2011.

Long-term ASW

On 30 April 2013, there were 380 people who had been registered as ASW for more than twelve months. This latest number of long-term ASW is 10 higher than in March 2013 and is the highest number recorded to date (see Figure 5).

Long-term ASW accounted for a fifth (20%) of the latest ASW total.

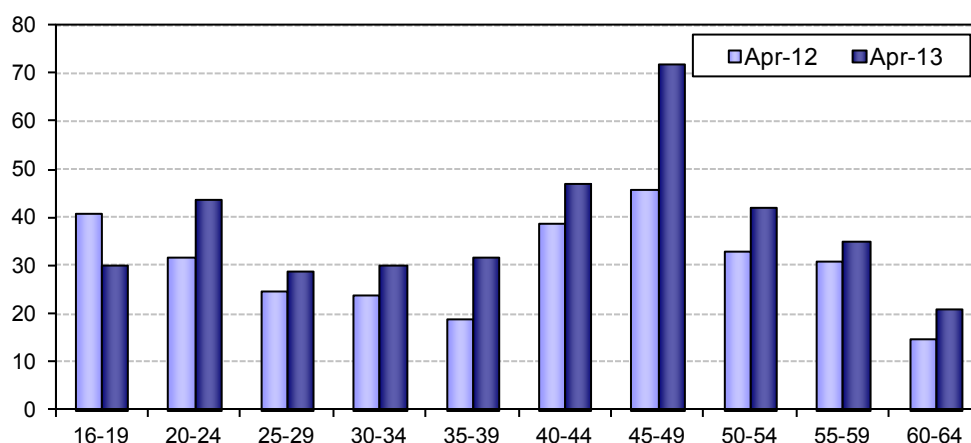
Figure 5 – Long-term ASW, Jan 2009 – Apr 2013



⁶ The ASW figures from June 2012 include a revision to the calculation of the length of time for which an individual has been registered as ASW. Previously, the duration had been calculated using the number of weeks an individual had been registered as ASW, whereas from June 2012 the calculation of duration is based on calendar months.

Figure 6 shows the age distribution of the long-term ASW in April 2013 and twelve months earlier, in April 2012.

Figure 6 – Long-term ASW by age, Apr 2012 and Apr 2013



A similar number of people aged under 25 were long-term ASW in April 2012 and April 2013. In contrast, the number of people aged 40 or over who were long-term ASW increased by 50 during the same twelve-month period.

Industry

Individuals working in some industries of the economy, notably in the Finance sector, often seek employment through private agencies and do not register with the Social Security Department. Such industries will, therefore, tend to be under-represented in the ASW numbers.

The last industry of employment was recorded for almost nine out of ten people registered as ASW in April 2013:

- around one in five were previously employed in 'Miscellaneous professional and domestic services' (21%) or in 'Retail and Wholesale, Motor repairs and sales' (19%);
- almost one in six were previously employed in 'Construction and allied trades' (15%);
- around one in ten were employed in 'Hotels, restaurants, pubs and clubs' (10%).

Notes

1. The Advance to Work scheme provides 16 to 19 year olds who have left school or college with a relevant work placement and training. Advance Plus provides 20 to 24 year olds with a relevant work placement and training.

Workwise comprises of a team of advisors in the Social Security Department who help people with special employment needs, or having particular employment barriers, to prepare for and seek suitable work. Since October 2010, a system enabling more complete counting of individuals on Workwise placements has been implemented.

*Statistics Unit
23 May 2013*

Appendix

Table A1: Number of individuals registered as ASW, Jan 2009 – Apr 2013⁷

		Male	Female	Total	Seasonally adjusted total
2009	Jan	570	270	840	790
	Feb	700	320	1,020	890
	Mar	720	330	1,050	1,000
	Apr	620	300	920	960
	May	560	300	870	970
	Jun	630	330	960	950
	Jul	620	320	940	940
	Aug	580	320	910	930
	Sep	580	330	910	960
	Oct	650	350	1,000	1,020
	Nov	700	390	1,090	1,090
	Dec	700	420	1,120	1,130
2010	Jan	770	440	1,200	1,150
	Feb	810	510	1,320	1,180
	Mar	720	450	1,170	1,130
	Apr	710	430	1,140	1,180
	May	670	390	1,060	1,150
	Jun	690	420	1,110	1,130
	Jul	760	490	1,240	1,250
	Aug	810	490	1,290	1,300
	Sep	770	460	1,230	1,280
	Oct	840	450	1,290	1,300
	Nov	870	440	1,310	1,290
	Dec	800	410	1,210	1,250

		Male	Female	Total	Seasonally adjusted total
2011	Jan	910	480	1,390	1,330
	Feb	960	510	1,470	1,320
	Mar	850	460	1,310	1,290
	Apr	870	490	1,350	1,390
	May	820	520	1,340	1,430
	Jun	780	500	1,280	1,340
	Jul	800	550	1,350	1,360
	Aug	820	530	1,350	1,360
	Sep	850	520	1,370	1,410
	Oct	920	570	1,500	1,500
	Nov	960	580	1,530	1,510
	Dec	960	580	1,540	1,570
2012	Jan	1,050	650	1,700	1,620
	Feb	1,130	690	1,820	1,670
	Mar	1,100	700	1,810	1,760
	Apr	1,060	680	1,740	1,760
	May	1,040	680	1,720	1,800
	Jun	1,020	700	1,720	1,760
	Jul	1,020	720	1,740	1,750
	Aug	1,020	650	1,670	1,710
	Sep	970	650	1,610	1,680
	Oct	1,020	700	1,720	1,740
	Nov	1,090	730	1,820	1,820
	Dec	1,100	740	1,840	1,870
2013	Jan	1,210	810	2,020	1,940
	Feb	1,210	820	2,030	1,880
	Mar	1,230	820	2,050	1,980
	Apr	1,140	800	1,930	1,910

⁷ Numbers are rounded independently to the nearest 10; hence components may not sum to totals.