

Registered Unemployment June 2010

Statistics Unit: www.gov.je/statistics



Introduction

Data on people registered as unemployed and actively seeking work in Jersey is compiled and administered by the Social Security Department. Since January 2010 the States of Jersey Statistics Unit has independently analysed this anonymised data and publishes a report on a monthly basis.

When interpreting the numbers presented in this report, it should be kept in mind that there is no legal requirement for all unemployed residents of Jersey to register as actively seeking work (ASW) with the Social Security Department. The numbers shown, therefore, constitute an informative set of indicators of the level and characteristics of unemployment in the Island at the specified point in time.

The internationally comparable unemployment rate (as defined by the International Labour Organisation, ILO) is measured on an annual basis by the Jersey Annual Social Survey and also by the Jersey Census.

The numbers of people registered as unemployed and actively seeking work include people who are on the Advance to Work and Workwise schemes¹.

Summary

On 30th June 2010:

- **The total number² of people registered as unemployed and actively seeking work (ASW) in Jersey was 1,110;**
- The latest monthly ASW total is:
 - 50 higher than that of a month earlier, May 2010;
 - 150 higher than that of a year earlier, June 2009;
- The 16-19 and 20-24 year old age-bands saw monthly increases of 20 and 30, respectively; all the other age-bands saw little change from May to June 2010;
- **On a seasonally adjusted basis, the total number of people registered as ASW has been relatively stable for the past seven months;**
- 100 teenagers were on the Advance to Work Scheme¹.

¹ The Advance to Work scheme provides 16 to 19 year olds who have left school or college with a relevant work placement and training. Workwise comprises a team of advisors in the Social Security Department who help people with special employment needs, or particular employment barriers, to prepare for and seek suitable work.

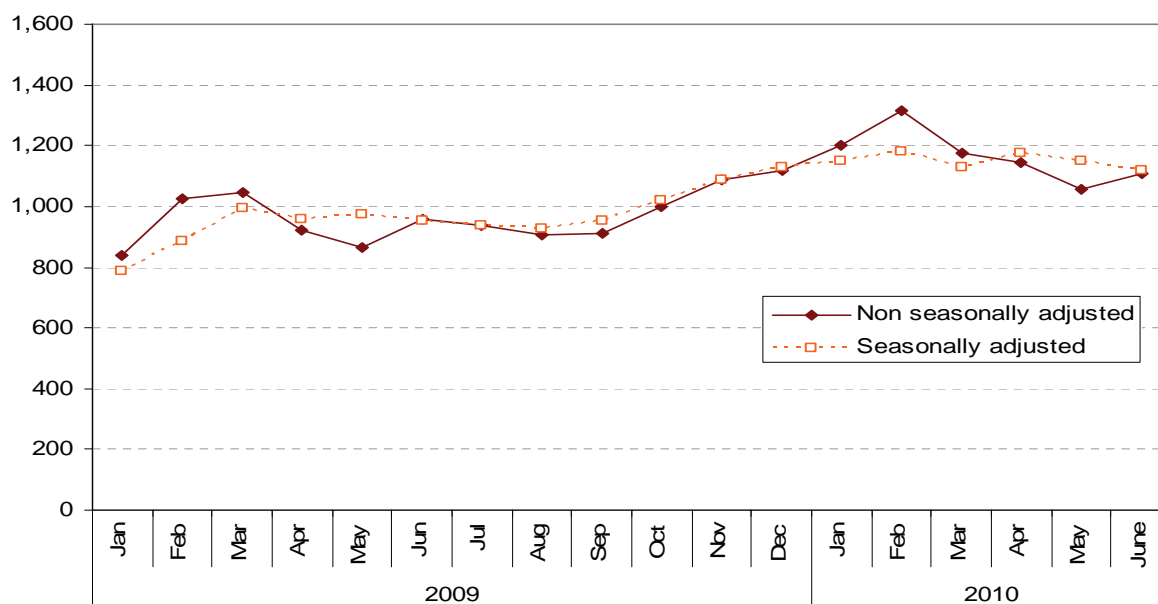
² Numbers presented in this report are rounded to the nearest 10.

Registered Unemployed people Actively Seeking Work

On 30th June 2010, 1,110 people were registered with the Social Security Department as unemployed and actively seeking work (ASW). More than two-thirds (69%) of people registered as ASW on this date (770 individuals) were receiving Income Support³.

Figure 1 shows the total number of people registered as ASW at the end of each month since January 2009 (monthly data are also shown in Annex Table A1). From September 2009 to February 2010 there was an ongoing increase in the number of people registered as ASW. The last four months have seen fewer people registered compared to February 2010, however the total for June 2010 is 50 higher than in May 2010 and 150 higher than a year earlier (June 2009).

Figure 1– Total number of individuals registered as ASW, Jan 2009 – June 2010



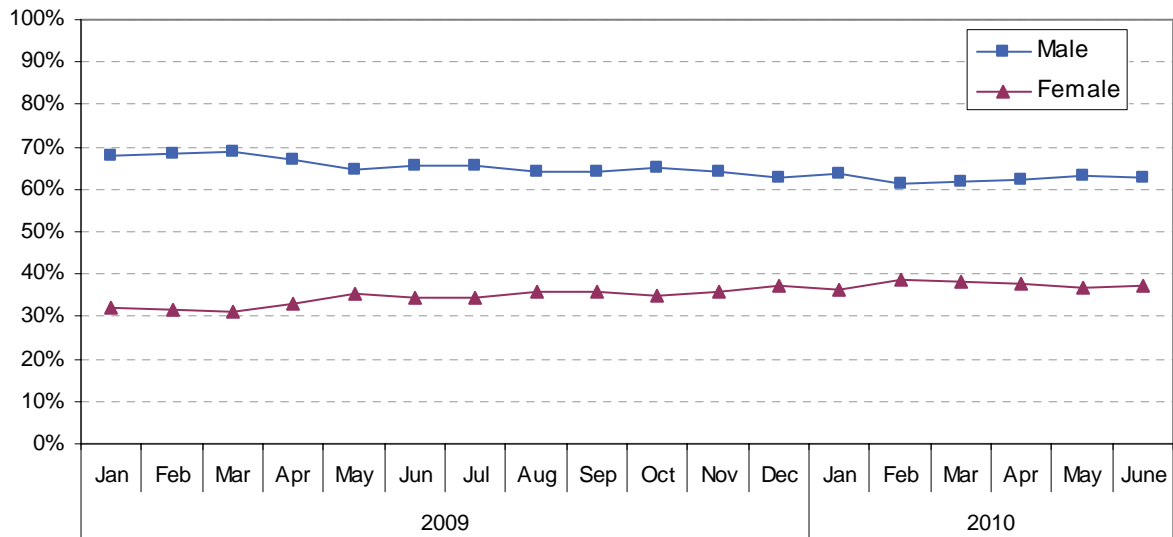
The seasonally adjusted series of the total registered as ASW, in which seasonal and calendar effects are removed, is also shown on Figure 1. From this perspective, the number of people registered as ASW in Jersey each month has been relatively stable for the past seven months compared with the ongoing increase seen in the latter half of 2009.

Registered ASW by gender

More than three-fifths (62%) of people registered as ASW on 30th June 2010 were men. As Figure 2 shows, the proportion of the total number of ASW who were women increased during 2009 and early 2010, from 31% in January 2009 (representing 270 women) to 39% in February 2010 (510) women. During the last five months this proportion has remained at around 37% to 38%, with 420 women registered in June 2010.

³ The total number of adults receiving Income Support without work will be greater than this figure, which represents the number registered on 30th June 2010 as ASW.

Figure 2 – Percentage of people registered as ASW by gender, Jan 2009 - June 2010



Registered ASW by age

On 30th June 2010 approximately two-fifths (41%) of all people registered as ASW in Jersey were under the aged of 25, with about a quarter of the total (24%) being teenagers aged 16-19 years.

Figure 3 shows the numbers registered as ASW by age of individuals for the last four months, March to June 2010. The 16-19 year and 20-24 year old age-bands saw monthly increases of 20 and 30, respectively; all the other age-bands saw little change from May to June 2010.

Figure 3 – Individuals registered as ASW by age, Mar 2010 – June 2010

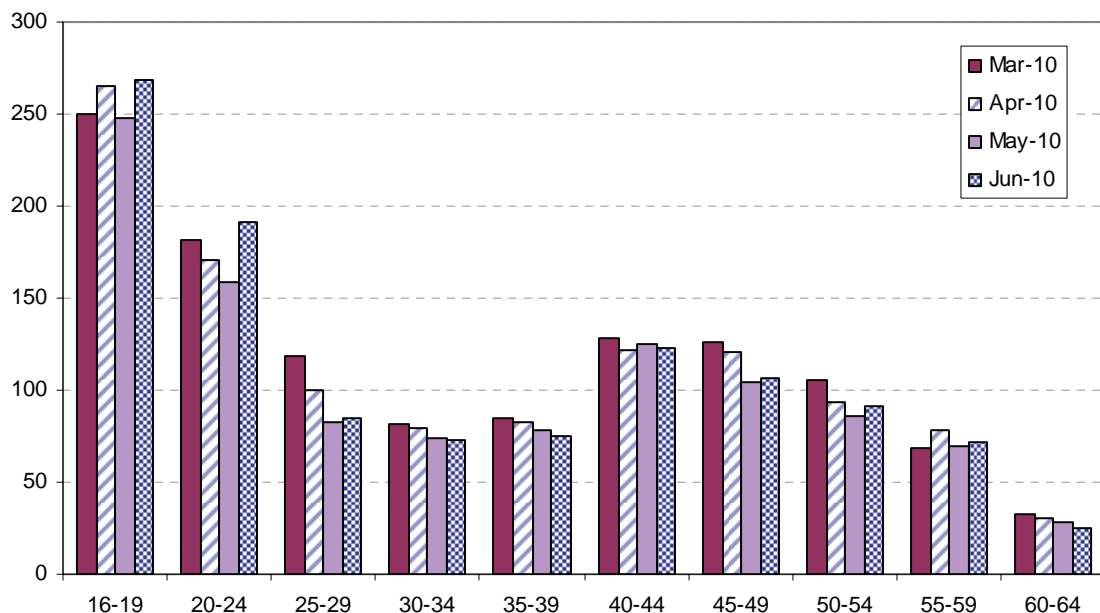
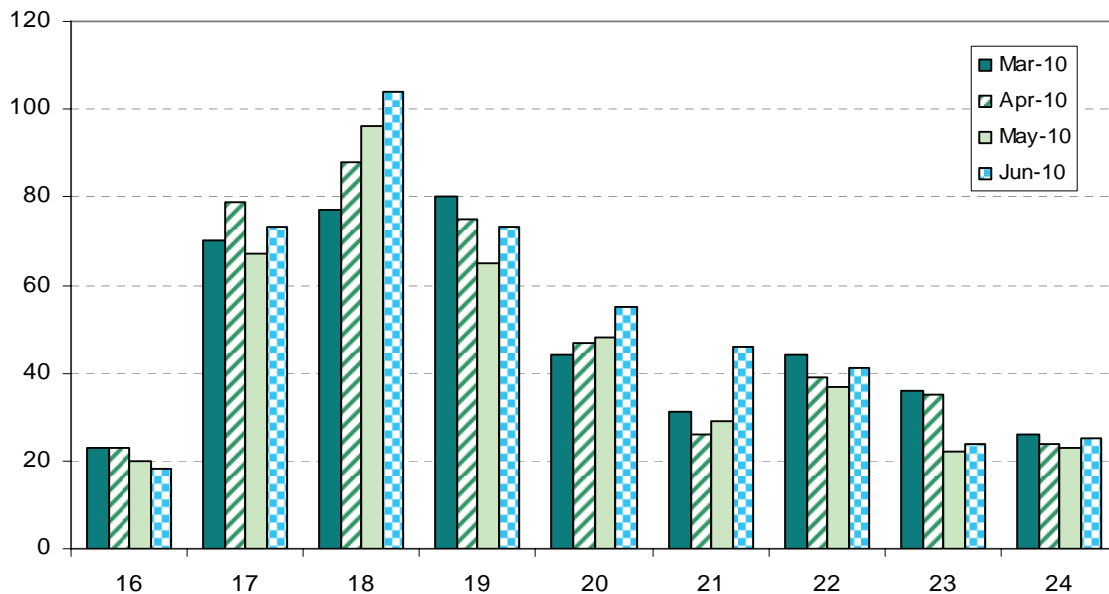


Figure 4 shows the age distribution for people under 25 years of age who were registered as ASW in March to June 2010, with the largest increase between May and June 2010 seen for 21 year olds. Of the 270 teenagers who were registered as ASW at the end of June 2010, 100 were on the Advance to Work scheme.

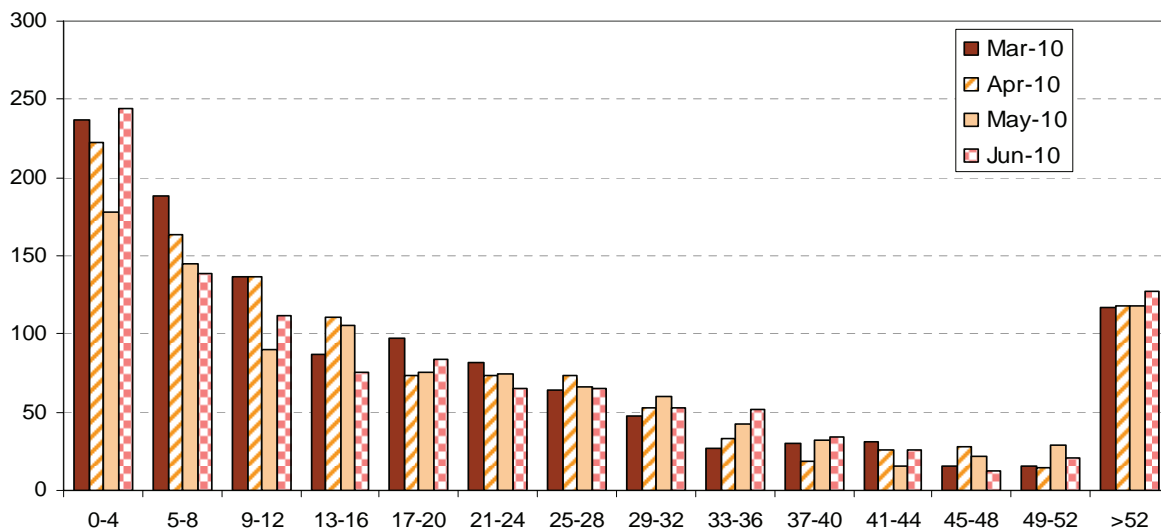
Figure 4 – Individuals under the age of 25 registered as ASW, Mar 2010 - June 2010



Duration as ASW

Fewer than half (45%) of people who were registered as ASW on 30th June 2010 had been registered for less than 13 weeks (approximately 3 months). 130 individuals (corresponding to 11% of the total) had been registered as ASW for more than a year - see Figure 5. About 70 additional people had registered in the latest month (0-4 weeks) compared to the corresponding number as at 31st May 2010.

Figure 5 – Individuals registered as ASW by length of period registered (weeks), Mar 2010 - June 2010



Occupation and Industry

Individuals working in some occupations and industries of the economy, notably in the Finance sector, often seek employment through private agencies instead of registering with the Social Security Department. Such occupations and industries will, therefore, be under-represented in the ASW numbers. Nevertheless, the change over time for all recorded occupations and industries will be informative.

Occupation

Almost half of people who were registered as ASW in the last six months had recorded the occupation of their last job.

Table 1 – Recorded occupation of last employment of individuals registered as ASW

Occupation ⁴	Jan 2010	Feb 2010	Mar 2010	Apr 2010	May 2010	Jun 2010
Managers and Senior Officials	8%	6%	6%	7%	7%	6%
Professional	2%	3%	3%	3%	3%	2%
Associate Professional and Technical	5%	5%	7%	7%	6%	7%
Administrative and Secretarial	13%	14%	14%	13%	12%	12%
Skilled Trades	18%	17%	17%	19%	17%	18%
Personal Service	6%	6%	6%	6%	6%	6%
Sales and Customer Service	18%	18%	16%	16%	18%	16%
Process, Plant and Machine Operatives	3%	3%	3%	3%	3%	2%
Elementary Occupations	27%	28%	28%	27%	28%	30%

As Table 1 shows, almost a third of people registered as ASW worked in the category of “Elementary occupations”, whilst about a sixth each worked in the Skilled Trades and Sales and Customer Service occupations (see Notes for example occupations within the different categories).

Industry

Around two-fifths (43%) of people who were registered as ASW on 30th June 2010 had recorded the industry of their last employer. The totals for each reported industry have been aggregated into groups of similar industries in Table 2.

Table 2 – Recorded industry of last employer of individuals registered as ASW, Percentage of all reported industries

Industry	May 2010	June 2010
Banking, Miscellaneous Insurance, Finance and Business	20%	19%
Miscellaneous professional and domestic Services	18%	19%
Retail and Wholesale, Motor repairs and sales	18%	17%
Construction and allied trades, mining and quarrying	14%	15%
Public Administration, including States Trading committees	9%	8%
Hotels, restaurants, pubs and clubs	5%	7%
Educational establishments and medical services	4%	5%
Transport and Communications	4%	4%
Manufacturing and Engineering	4%	4%
Fishing, Agriculture and Horticulture	2%	3%

*Statistics Unit
21st July 2010*

⁴ Standard Occupational Classification SOC2000.

Notes

Standard Occupational Classification (SOC 2000):

Example occupations within each category:

Managers and Senior Officials

managers and senior offices in public and private sectors.

Professional

science professionals, civil engineers, pharmacists, veterinarians, teachers, lawyers, judges, chartered accountants, architects, social workers, librarians, clergy.

Associate Professional and Technical

science technicians, engineering technicians, nurses, dental technicians, physiotherapists, youth workers, police officers (sergeant and below), artists, actors, graphic designers, journalists, sport coaches, air traffic controllers.

Administrative and Secretarial

office clerks, secretaries, personal assistants, receptionists, book-keepers, telephonists.

Skilled Trades

farmers, gardeners, fishermen, mechanics, electricians, telecommunication engineer, computer engineer, bricklayers, plumbers, carpenters, plasterers, tailors, printers, butchers, bakers, chefs.

Personal Service

nursing auxiliaries and assistants, care assistants, home carers, animal care, leisure and travel assistants, travel agents, hairdressers, nursery nurses, childminders, education assistants, housekeepers.

Sales and Customer Service

sales assistants, retail cashiers, call centre agents, check out operators, customer care occupations, telephone sales person.

Process, Plant and Machine Operatives

plant and machine operatives, fork-lift truck drivers, taxi cab drivers, chauffeurs, bus drivers, van drivers, construction operatives.

Elementary Occupations

farm workers, labourer, packers, postal workers, messengers, couriers, hotel porters, kitchen and catering assistants, waiters, bar staff, domestic cleaners, security guards.

Annex

Table A1: Number of individuals registered as ASW, Jan 2009 – June 2010⁵

		Male	Female	Total	Seasonally adjusted total
2009	Jan	570	270	840	790
	Feb	700	320	1,020	890
	Mar	720	330	1,050	1,000
	Apr	620	300	920	960
	May	560	300	870	970
	Jun	630	330	960	950
	Jul	620	320	940	940
	Aug	580	320	910	930
	Sep	580	330	910	960
	Oct	650	350	1,000	1,020
	Nov	700	390	1,090	1,090
	Dec	700	420	1,120	1,130
2010	Jan	770	440	1,200	1,150
	Feb	810	510	1,320	1,180
	Mar	730	450	1,180	1,130
	Apr	710	430	1,140	1,180
	May	670	390	1,060	1,150 (r)
	Jun	690	420	1,110	1,120

⁵ Numbers are rounded independently to the nearest 10; hence components may not sum to totals.
(r) seasonal adjusted data revised