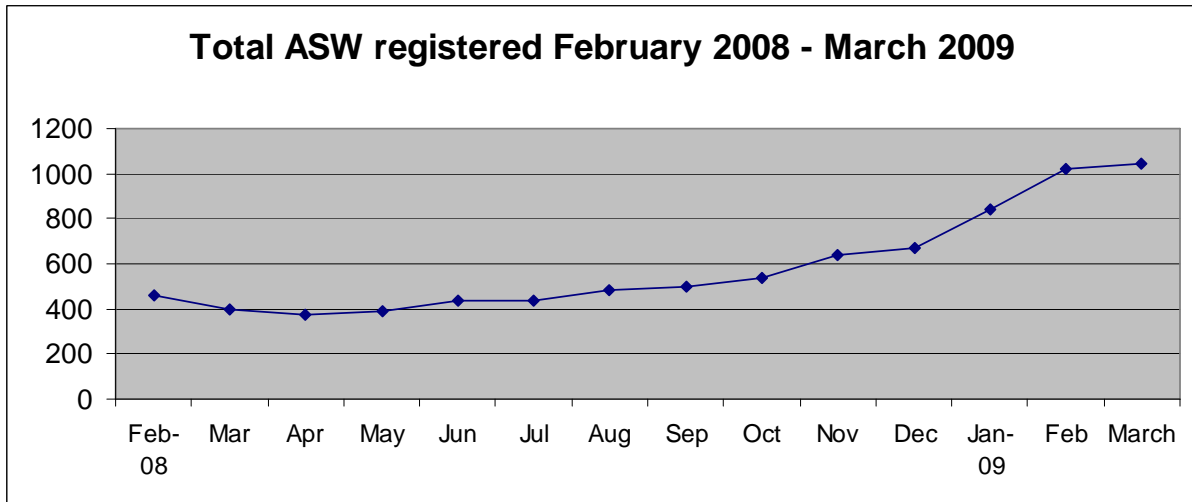


Social Security Department
Registered Unemployed Individuals Actively Seeking Work (ASW)
31 March 2009

1,045 people were registered with the Department as unemployed and actively seeking work (ASW) on 31 March 2009. Of these 719 were men and 326 women.



Following the sharp rise in registered ASW in January and February 2009, the figure for March shows a further, but much smaller increase of 22 from 1,023 to 1,045.

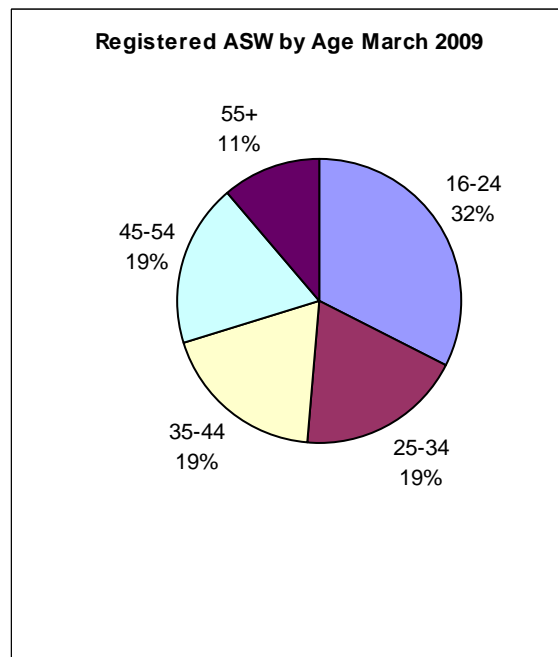
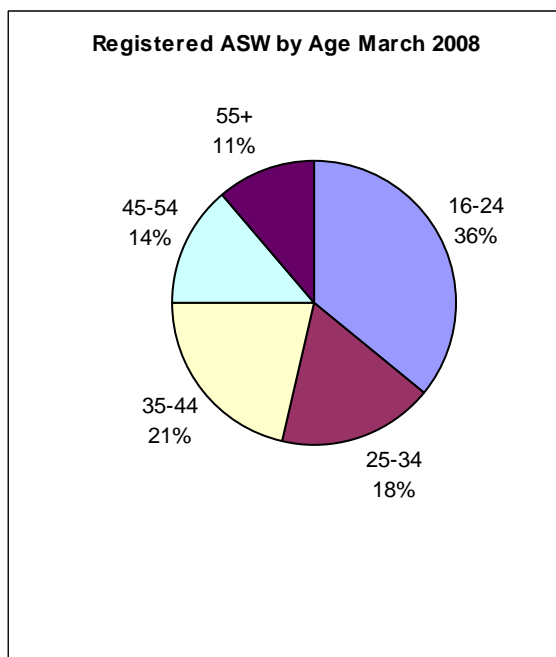
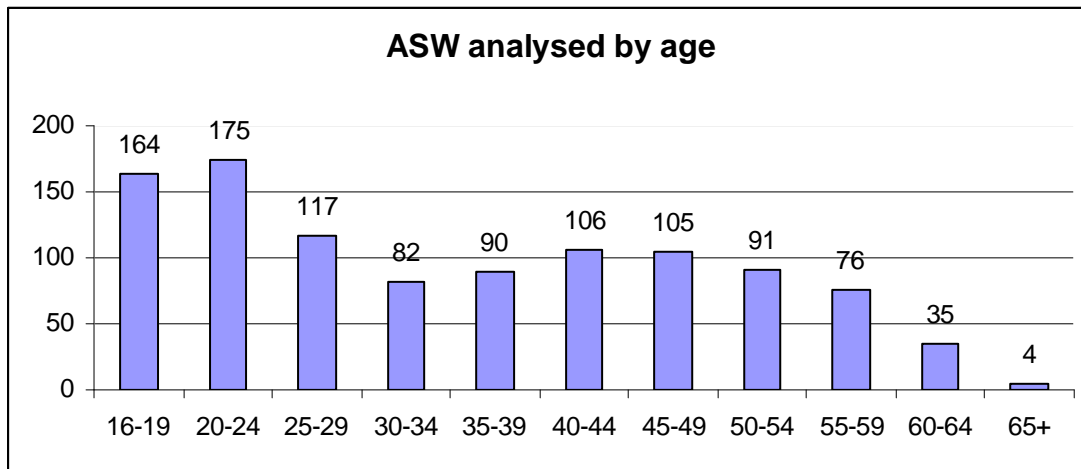
Of the 1,045 people registered as ASW, 597 are currently receiving Income Support¹.

The use of the learning area facilities has been similar to last month with 651 sessions in March compared to 664 in February.

¹ The total number of adults receiving Income Support without work will be greater than this figure, however this is the number registered on 31 March as ASW.

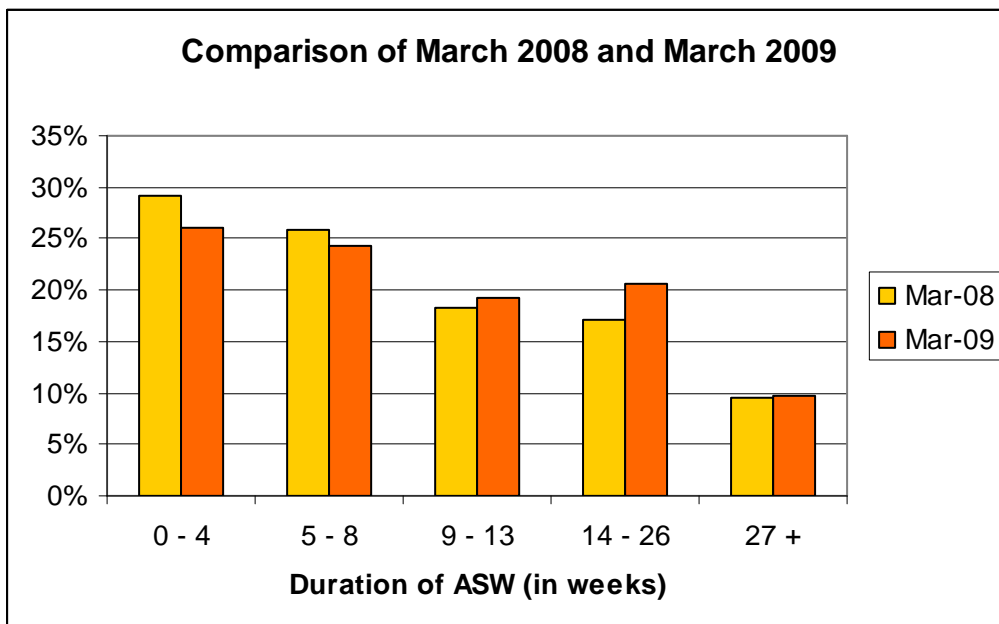
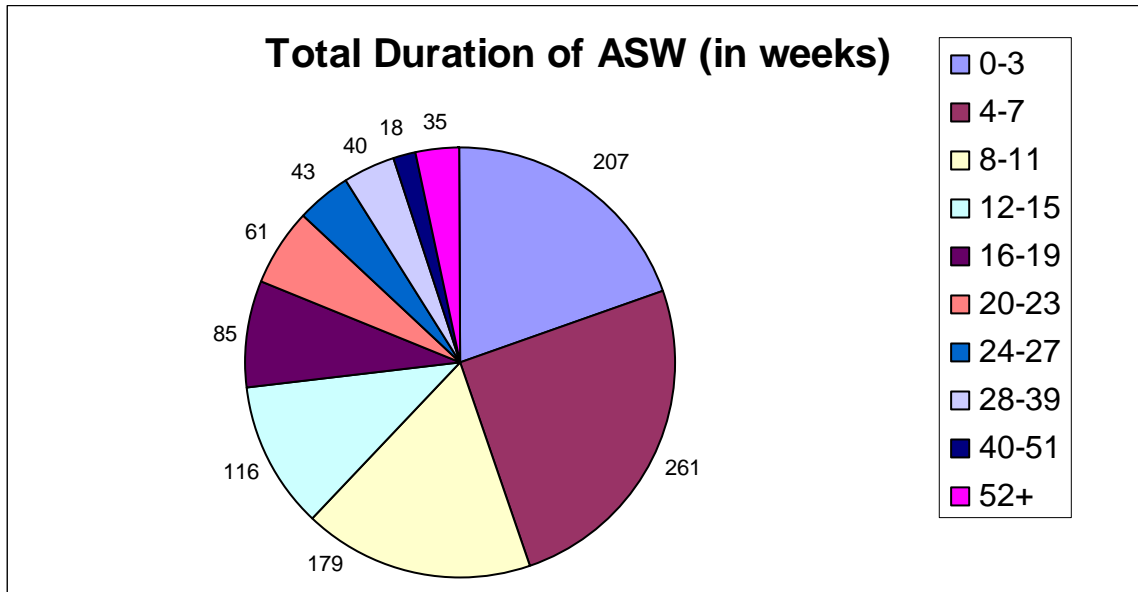
Registered ASW by age

The charts below show the number of people registered as ASW by age as at 31 March 2009. 32% of those registered are aged 24 or below.



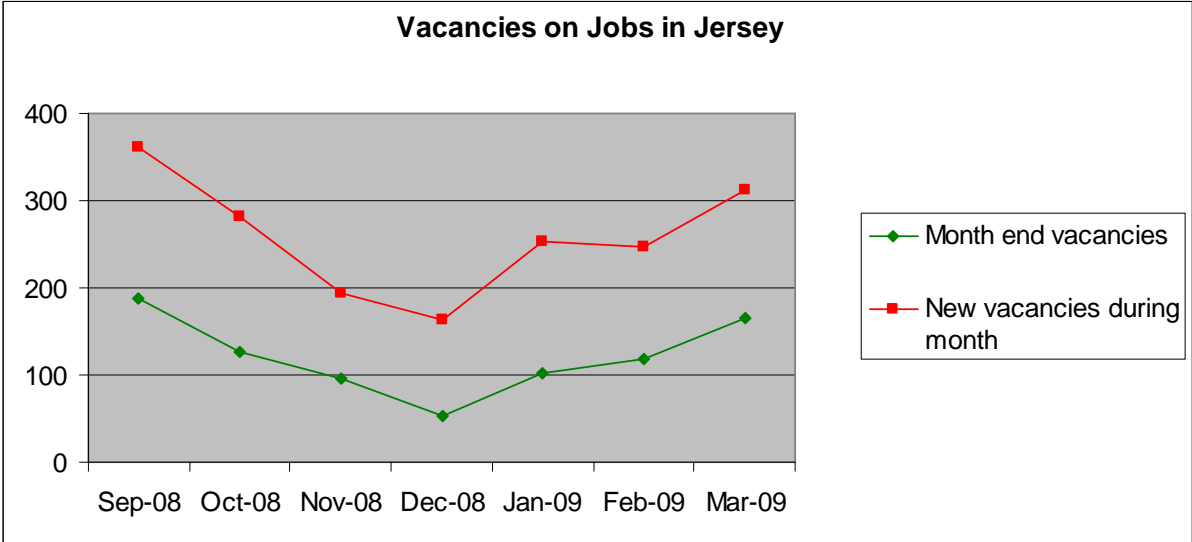
Duration as ASW

The majority of people who register as ASW with the Social Security Department remain registered for less than 12 weeks. The chart below provides information on the periods of time people have been registered with the Department as at 31 March 2009.



Comparing the percentage of ASW remaining registered between March 2008 and March 2009 indicates that individuals are remaining as ASW for slightly longer than at this time last year.

At the end of March 2009, 165 vacancies were advertised on the Jobs in Jersey website (<http://www.gov.je/jobs/>) . This compares with 206 vacancies at the end of March 2008. During the month 313 new vacancies were posted, compared to 414 in March 2008. Although vacancies are running at a much lower level than this time last year, numbers have picked up since the beginning of 2009.



General Note

It should be remembered that there is no statutory requirement for all unemployed residents of Jersey to register as actively seeking work with the Social Security Department. As such the data above is a useful indicator of the level of unemployment in the Island but it does not attempt to measure the actual rate of unemployment. This is undertaken on an annual basis through the Jersey Annual Social Survey.