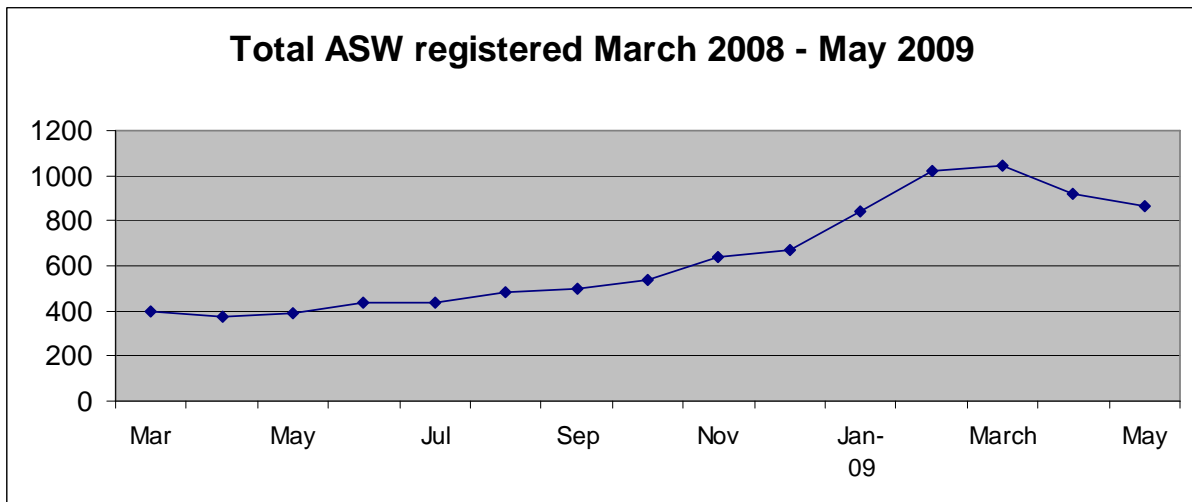


**Social Security Department**  
**Registered Unemployed Individuals Actively Seeking Work (ASW)**  
**31 May 2009**

865 people were registered with the Department as unemployed and actively seeking work (ASW) on 31 May 2009. Of these 560 were men and 304 women.



The figure for May shows a small decrease of 58 from 923 in April.

Of the 865 people registered as ASW, 584 are currently receiving Income Support<sup>1</sup>.

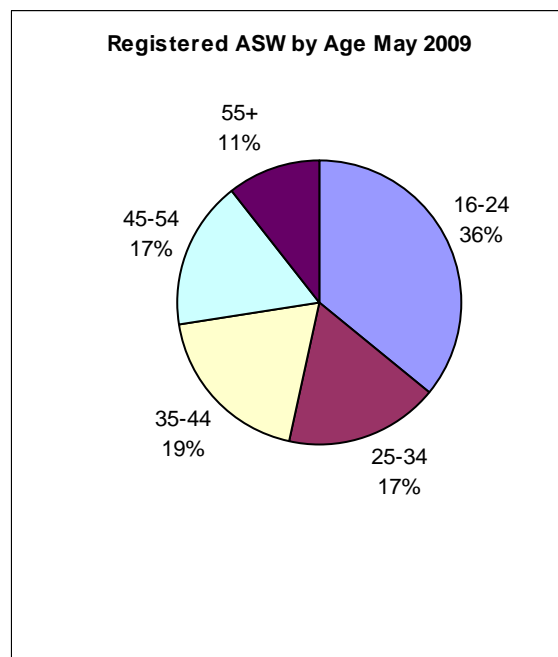
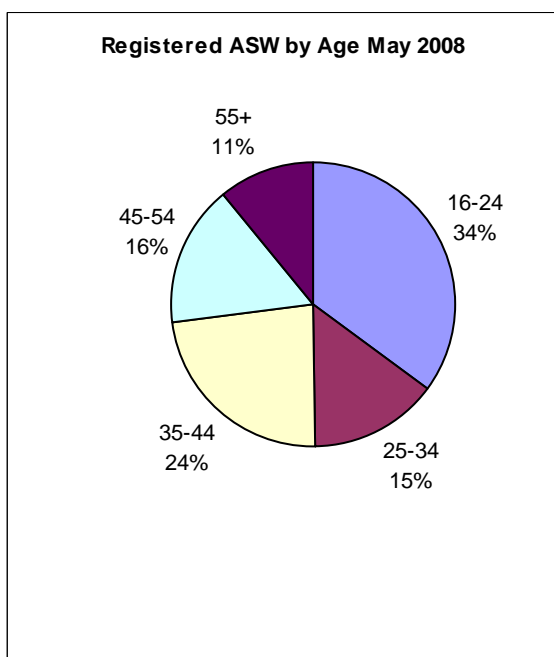
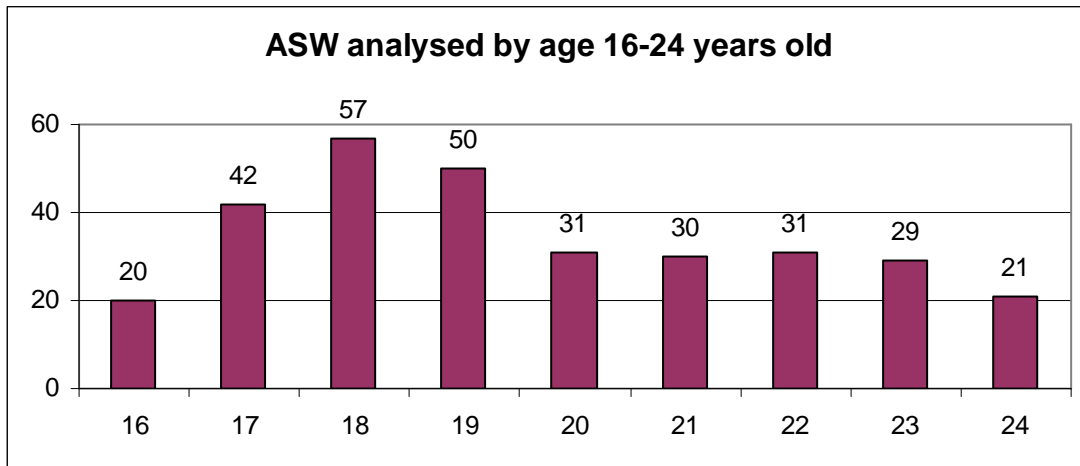
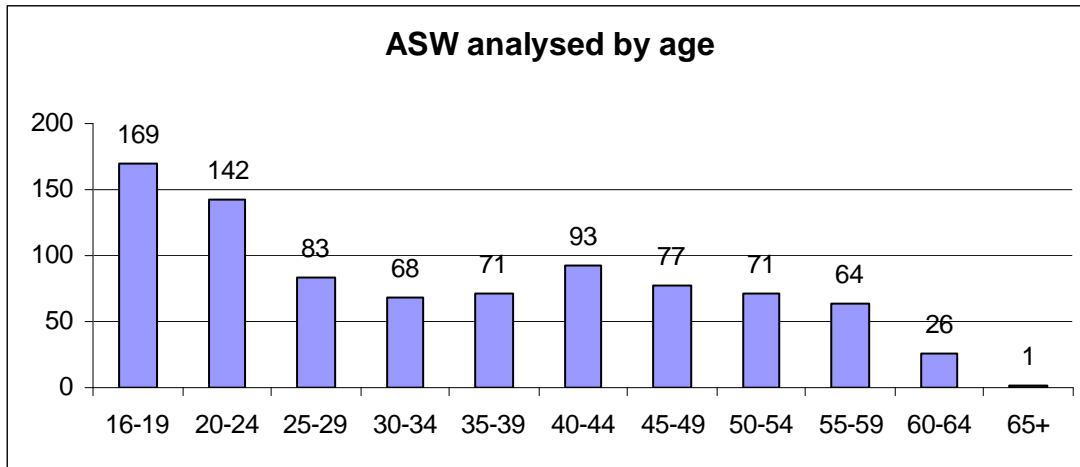
The use of the learning area facilities has been steadily increasing with 746 sessions in May compared to 728 in April.

---

<sup>1</sup> The total number of adults receiving Income Support without work will be greater than this figure, however this is the number registered on 31 May as ASW.

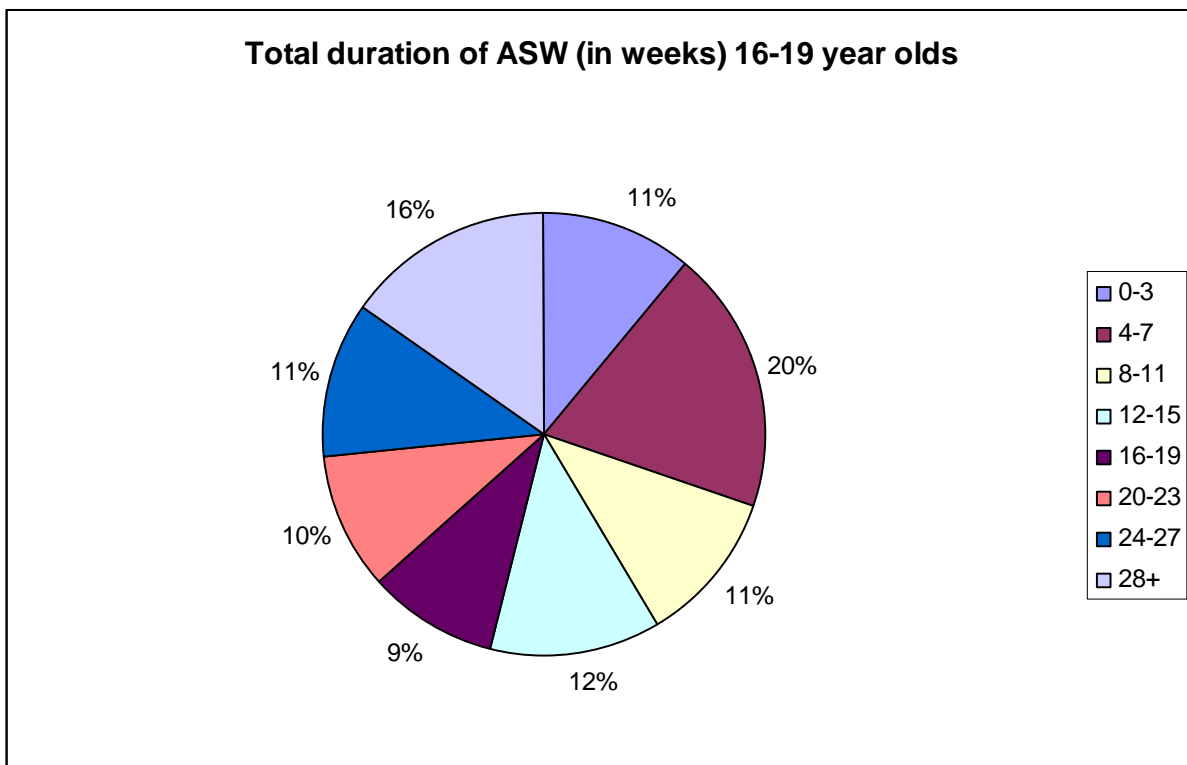
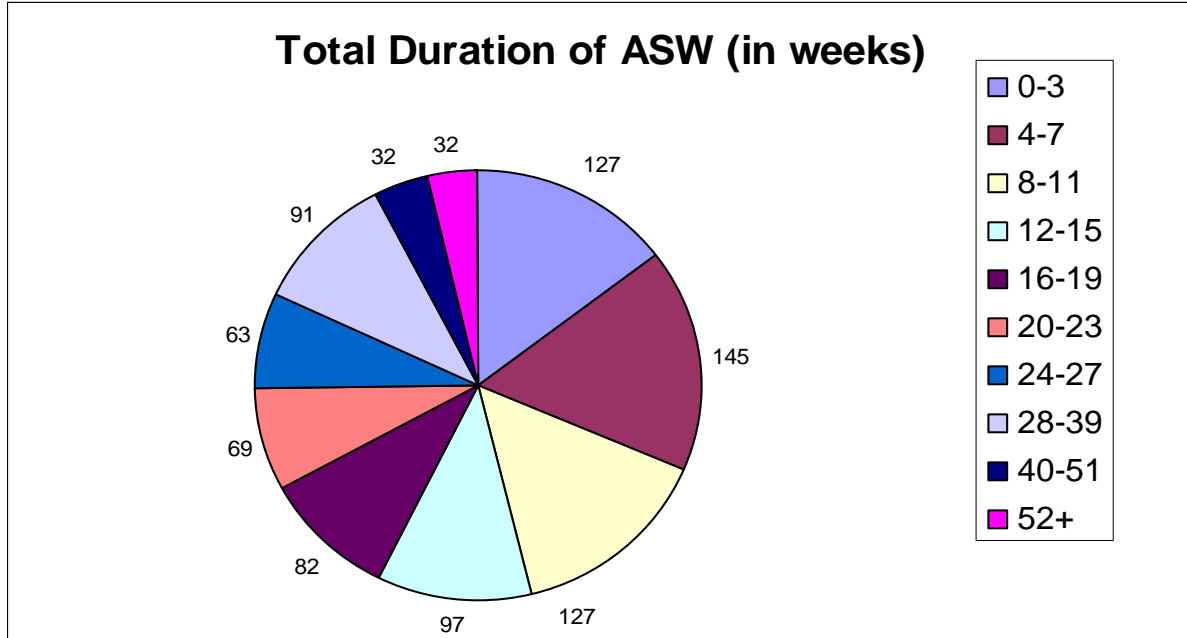
## Registered ASW by age

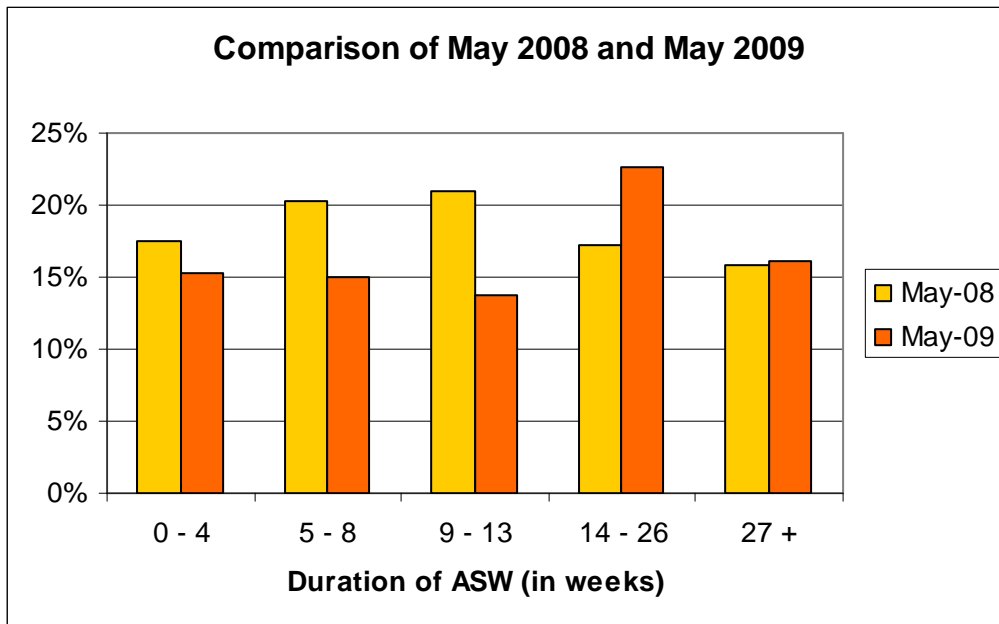
The charts below show the number of people registered as ASW by age as at 31 May 2009. 36% of those registered are aged 24 or below.



## Duration as ASW

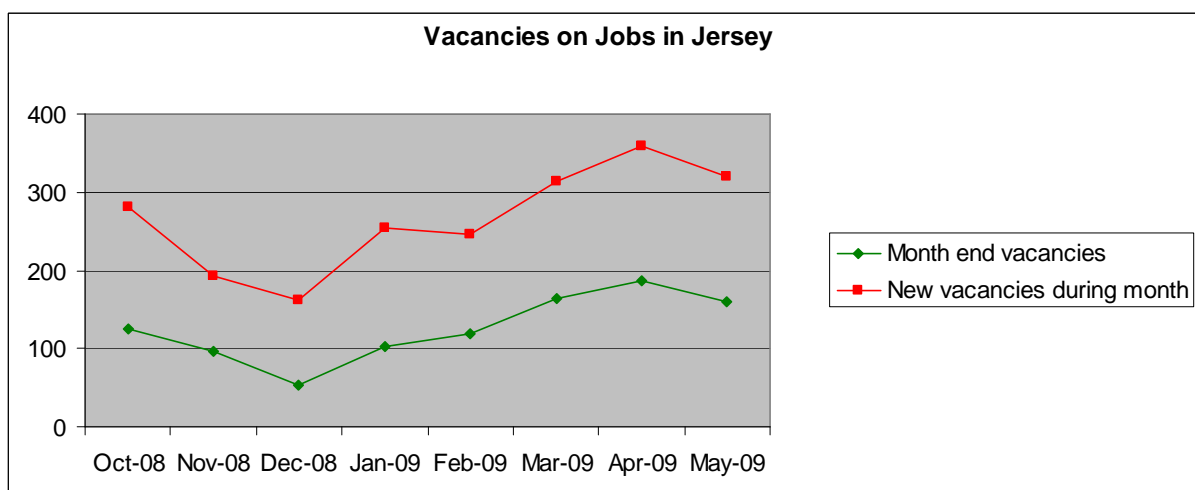
The majority of people who register as ASW with the Social Security Department remain registered for less than 15 weeks. The chart below provides information on the periods of time people have been registered with the Department as at 31 May 2009.





Comparing the percentage of ASW remaining registered between May 2008 and May 2009 indicates that individuals are remaining as ASW for slightly longer than at this time last year.

At the end of May 2009, 159 vacancies were advertised on the Jobs in Jersey website (<http://www.gov.je/jobs/>). This compares with 212 vacancies at the end of May 2008. During the month 321 new vacancies were posted, compared to 440 in May 2008. Although vacancies are running at a much lower level than this time last year, numbers have picked up since the beginning of 2009.



**General Note**

It should be remembered that there is no statutory requirement for all unemployed residents of Jersey to register as actively seeking work with the Social Security Department. As such the data above is a useful indicator of the level of unemployment in the Island but it does not attempt to measure the actual rate of unemployment. This is undertaken on an annual basis through the Jersey Annual Social Survey.