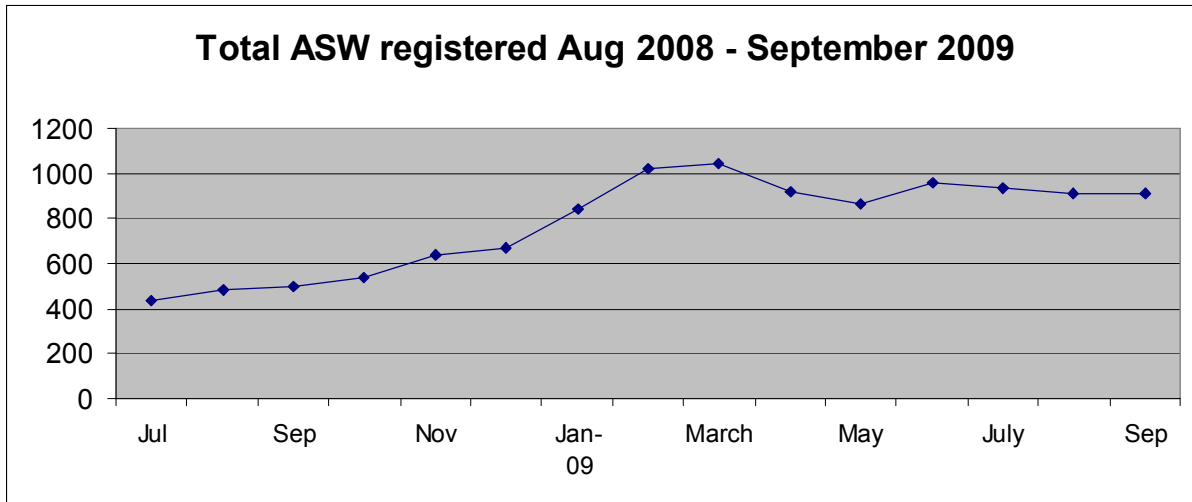


Social Security Department
Registered Unemployed Individuals Actively Seeking Work (ASW)
30 September 2009

910 people were registered with the Department as unemployed and actively seeking work (ASW) on 30 September 2009. Of these 583 were men and 327 women.



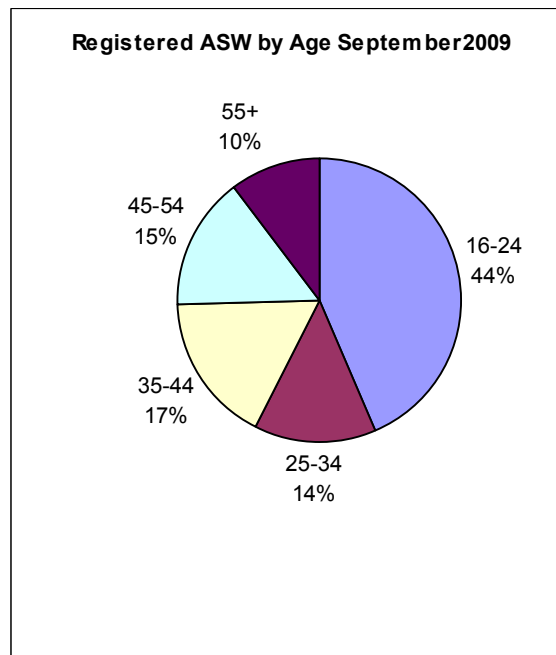
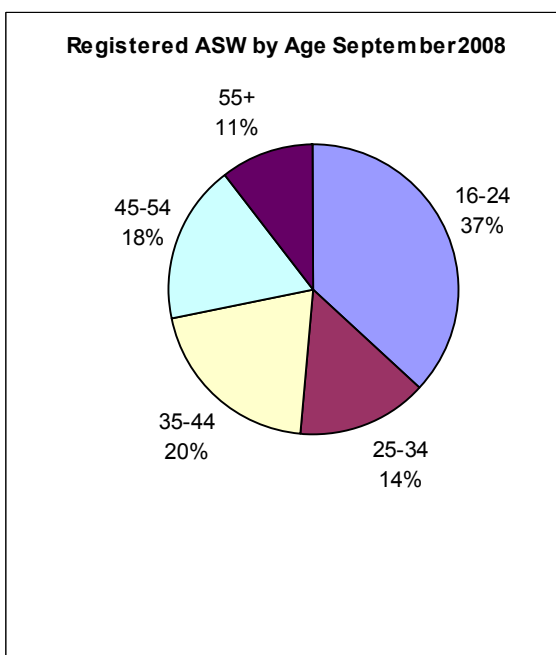
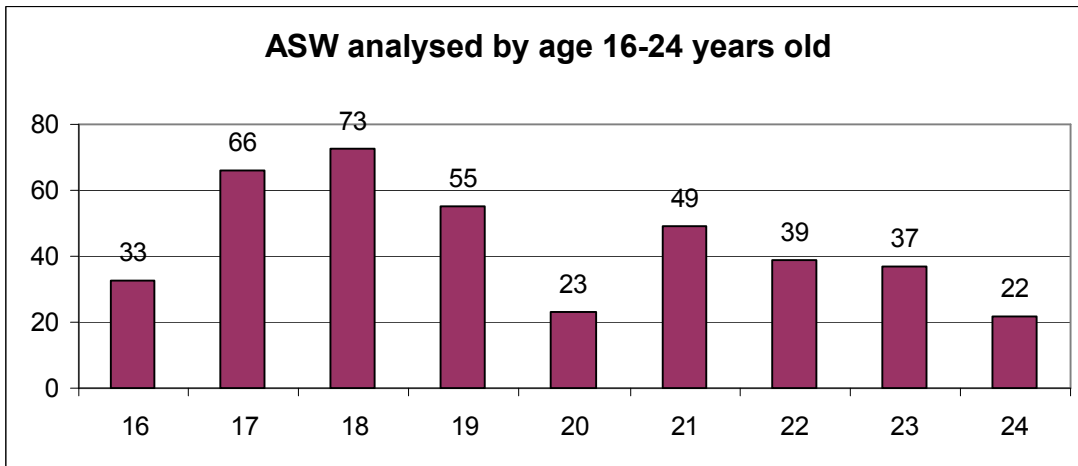
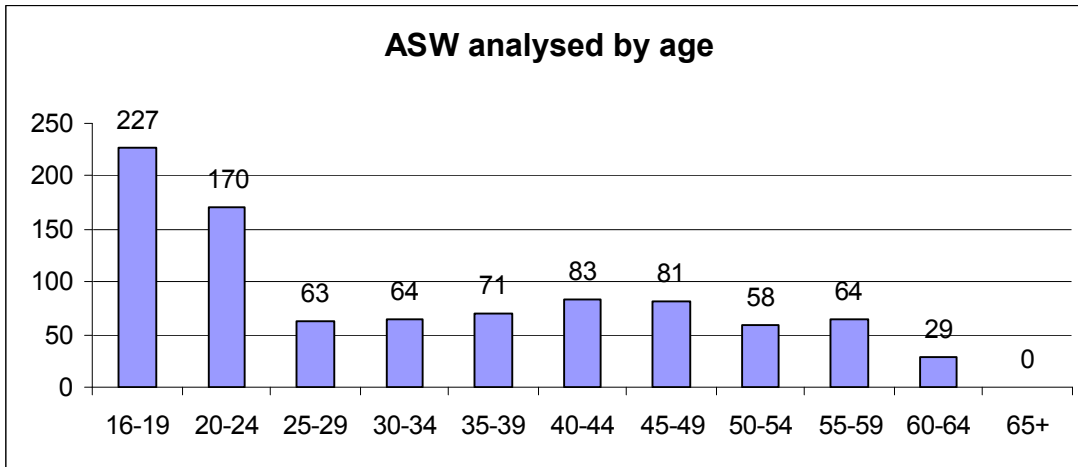
The figure for September shows that the number of people actively seeking work remains quite static with a very small increase of 2 from 908 in August.

Of the 910 people registered as ASW, 602 were receiving Income Support¹ at the end of September.

¹ The total number of adults receiving Income Support without work will be greater than this figure, however this is the number registered on 30 September 2009 as ASW.

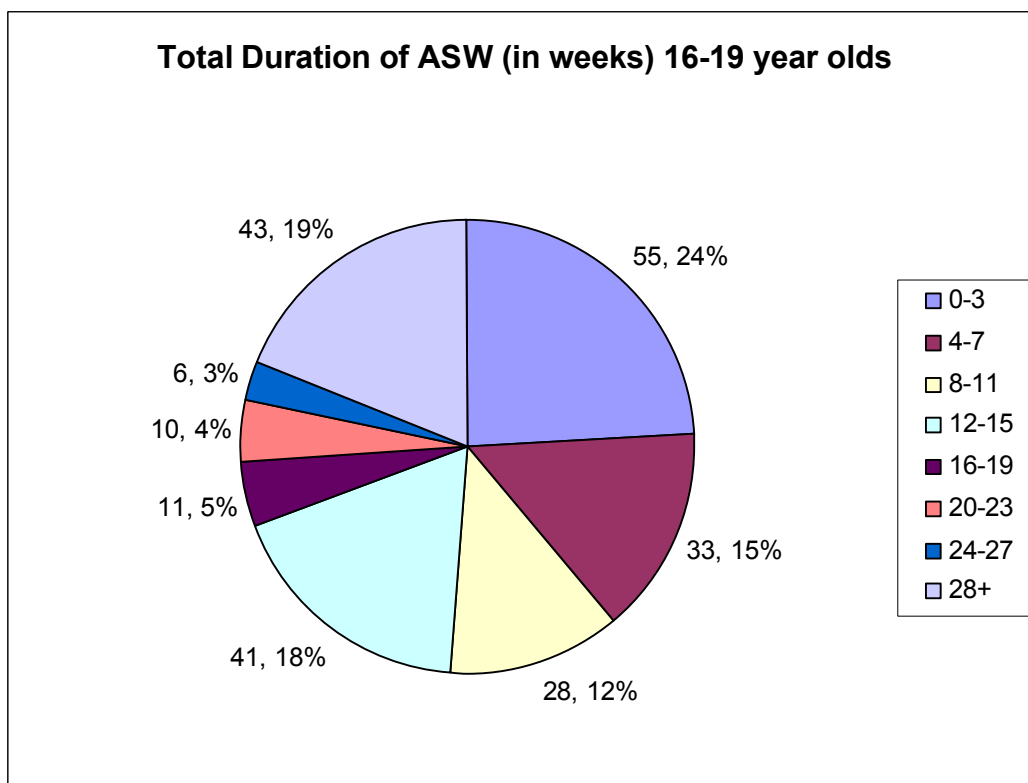
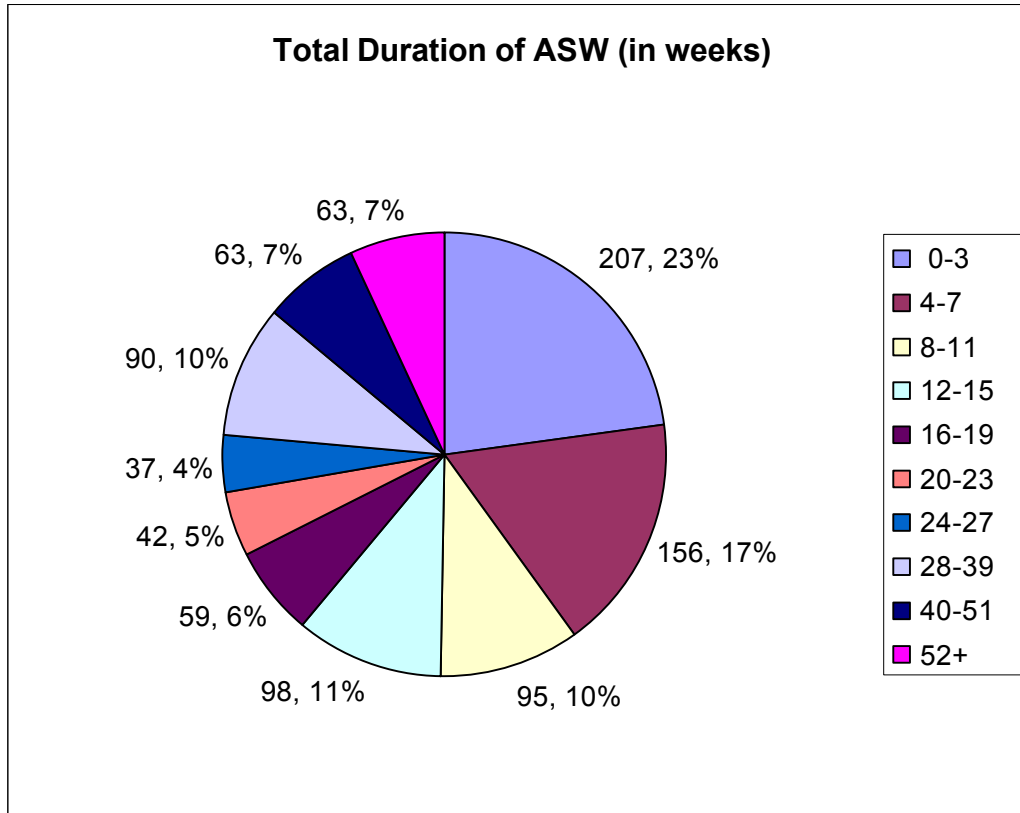
Registered ASW by age

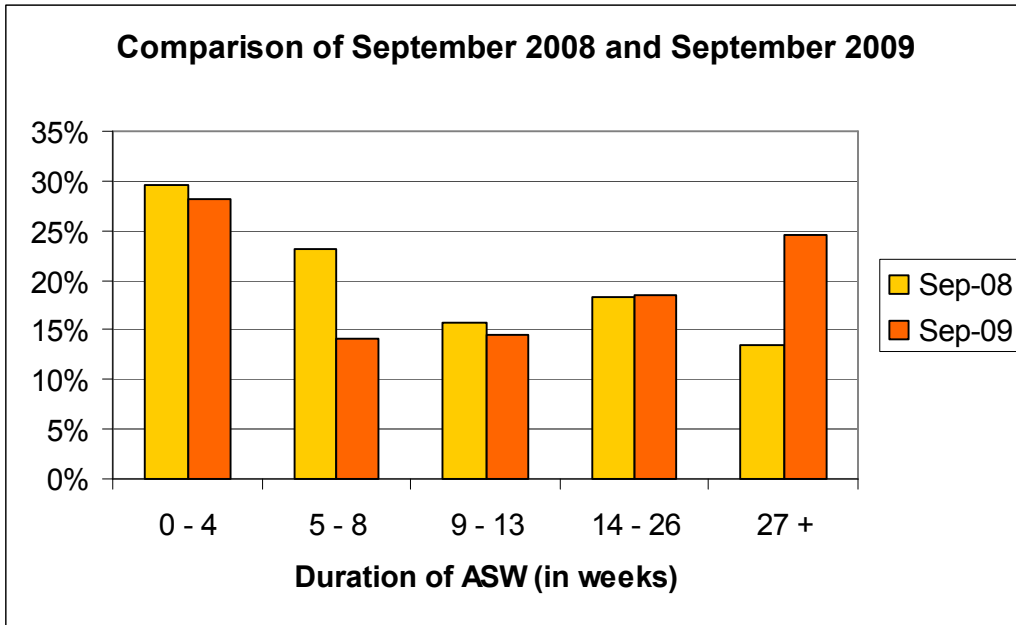
The charts below show the number of people registered as ASW by age as at 30 September 2009. 44% of those registered are aged 24 or below. The Advance to work scheme is now operating for 16 to 19 year olds and numbers will be reported from October onwards.



Duration as ASW

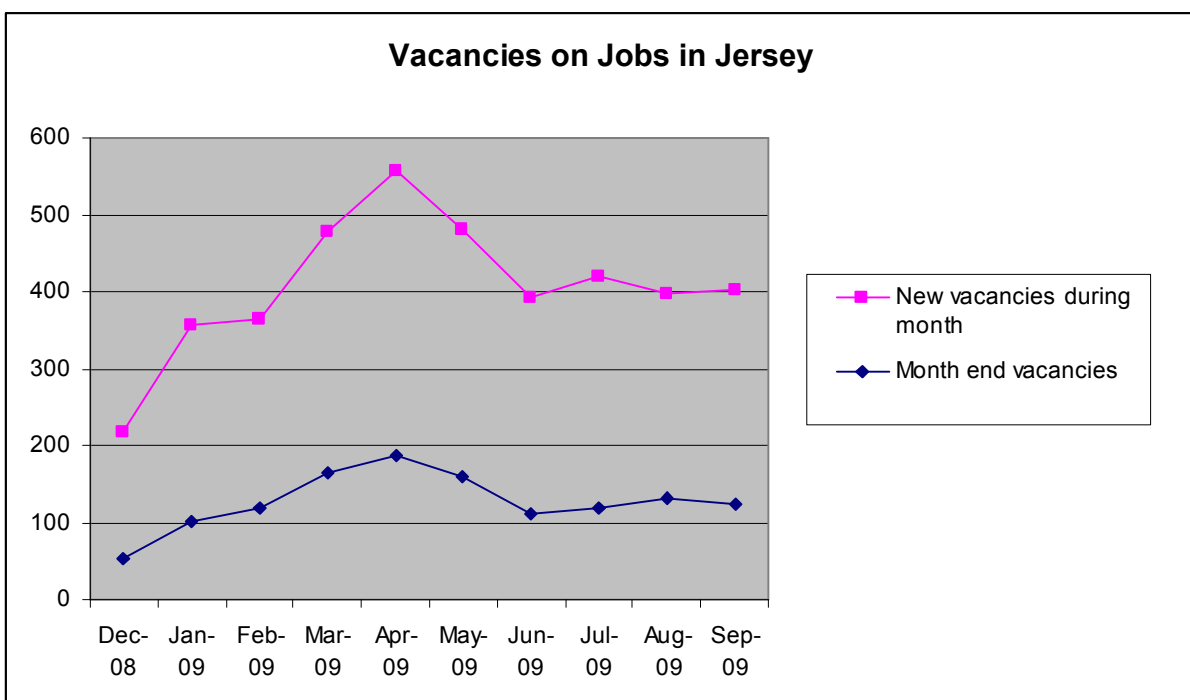
The majority of people who register as ASW with the Social Security Department remain registered for less than 15 weeks. The chart below provides information on the periods of time people have been registered with the Department as at 30 September 2009.





Comparing the percentage of ASW registered between September 2008 and September 2009 indicates that individuals are remaining as ASW for longer periods than at this time last year.

At the end of September 2009, 123 vacancies were advertised on the Jobs in Jersey website (<http://www.gov.je/jobs/>). This compares with 188 vacancies at the end of September 2008. During the month 280 new vacancies were posted, compared to 362 in September 2008. Although vacancies are running at a much lower level than this time last year, numbers continue to follow the normal seasonal trend.



General Note

It should be remembered that there is no statutory requirement for all unemployed residents of Jersey to register as actively seeking work with the Social Security Department. As such the data above is a useful indicator of the level of unemployment in the Island but it does not attempt to measure the actual rate of unemployment. This is undertaken on an annual basis through the Jersey Annual Social Survey.