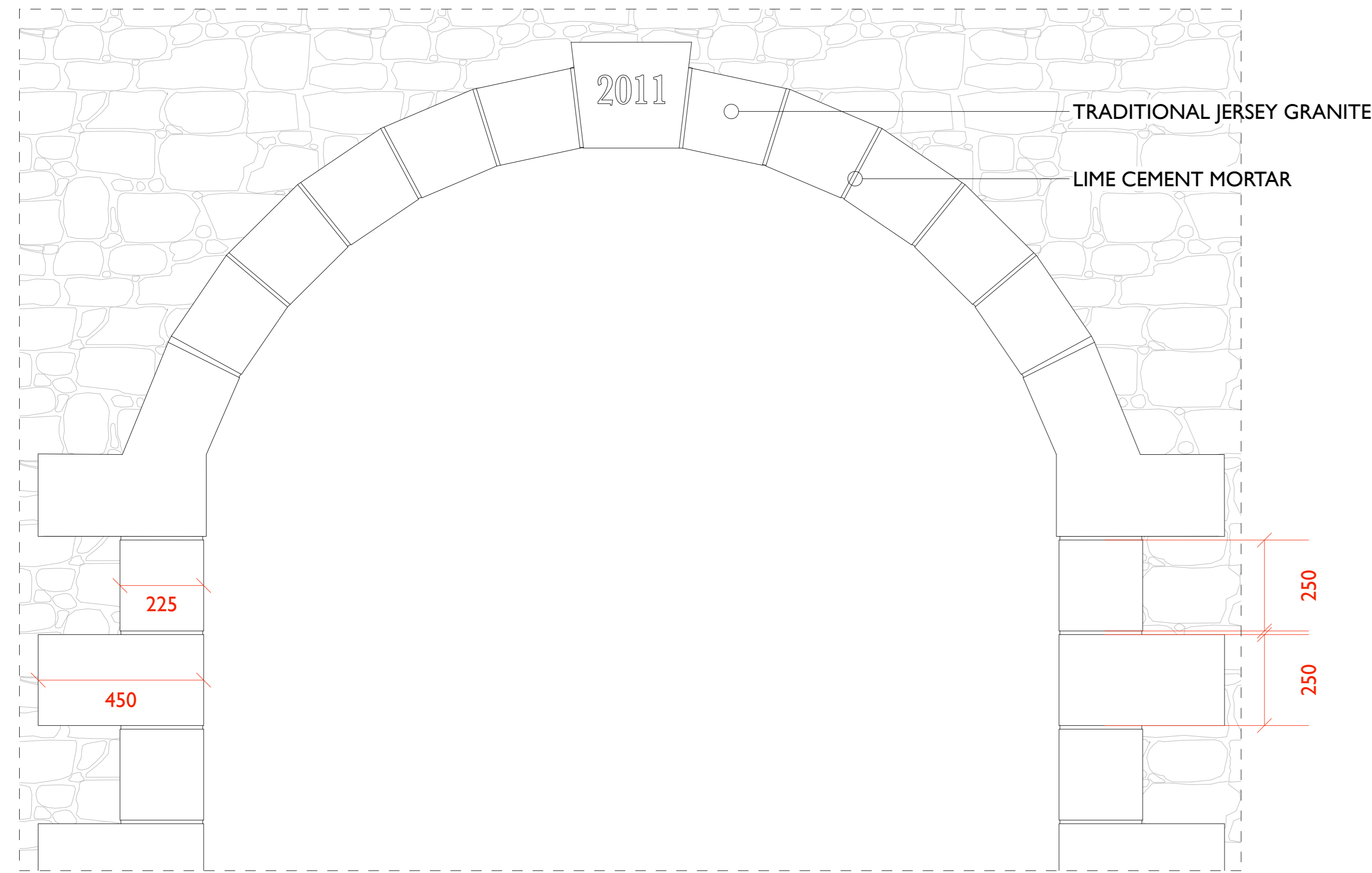
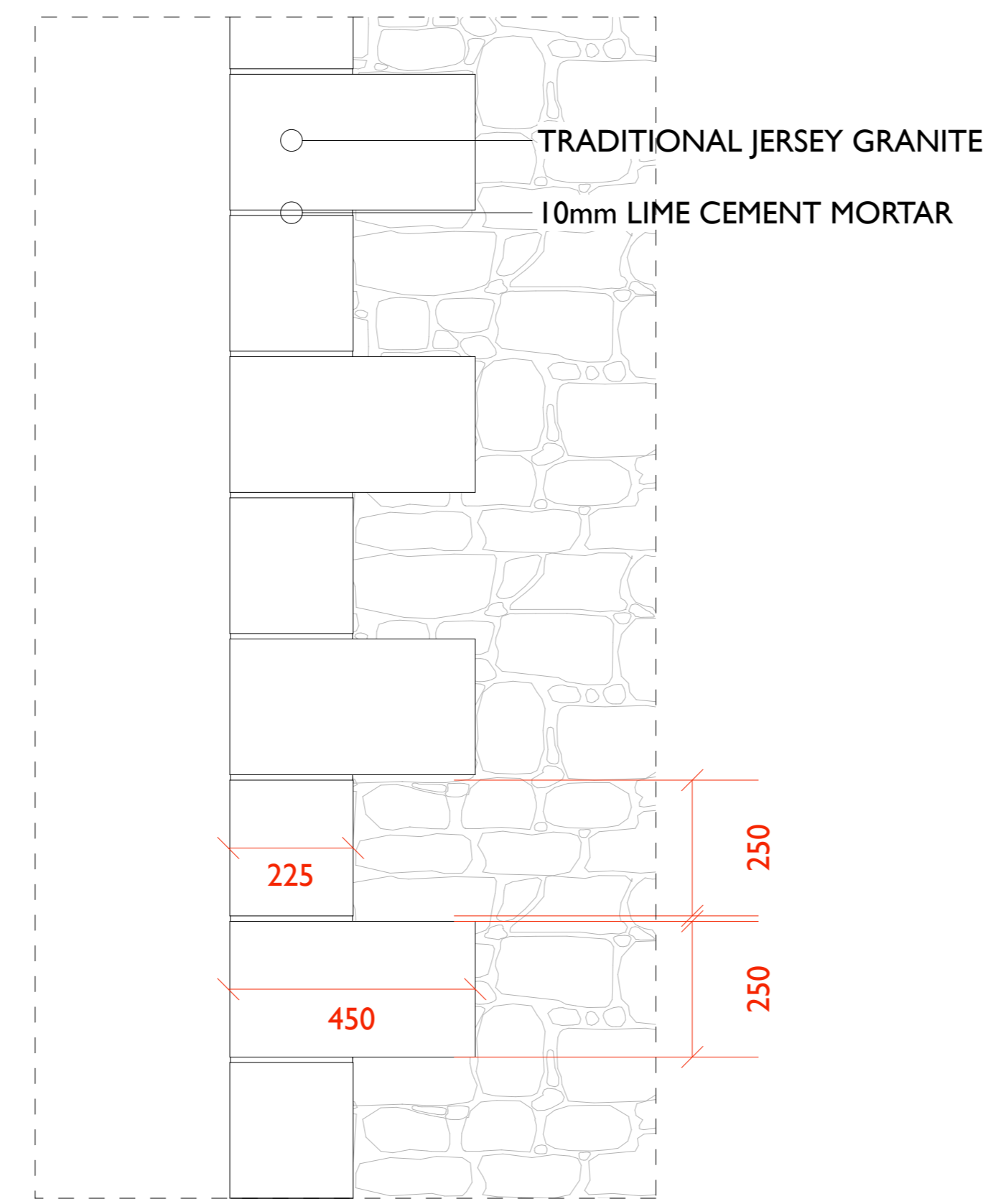


THIS DRAWING AND ALL DESIGN AND DETAILS ARE THE COPYRIGHT OF CHANNEL ARCHITECTS LTD.
 This drawing must be read in conjunction with all other drawings, details and specifications issued by the Architect, Structural Engineer and other Consultants or approved specialists. Discrepancies between any other drawings, details and/or specifications must be referred to the Architect for verification at least 7 days prior to commencement of the work. It is the Contractor's responsibility to ensure all work is carried out in accordance with all statutory requirements and to the approval of the Building Control Officer. All roof and structural timbers are to be vacuum preservative treated by approved methods before delivery to site. All roof decking or external plywood to be W.B.P. bonded external grade. All materials to comply with the latest British Standards Specification or have an Agrément Certificate. The Contractor is responsible for all setting out of the works. Use written dimensions only, do not scale off drawings. All dimensions and setting out must be checked on site.
 REVISIONS

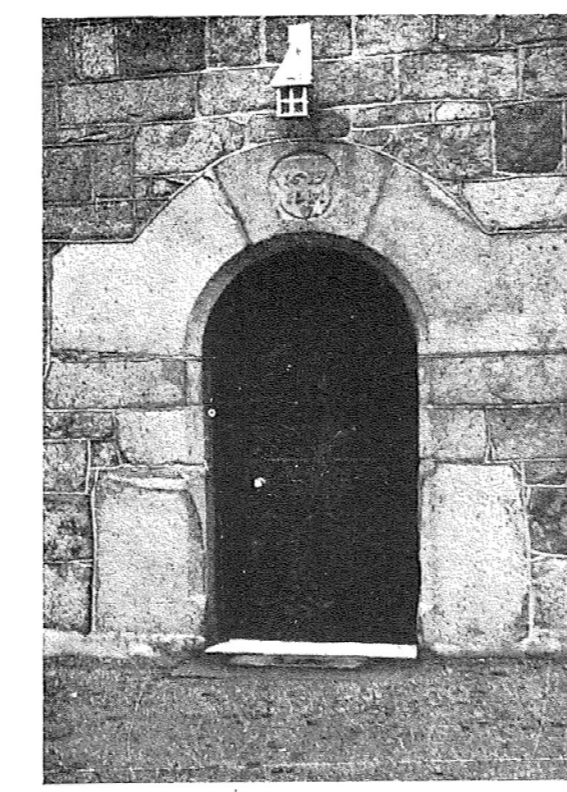


GRANITE ARCH ELEVATION (WITH FEATURE KEYSTONE)
1:10

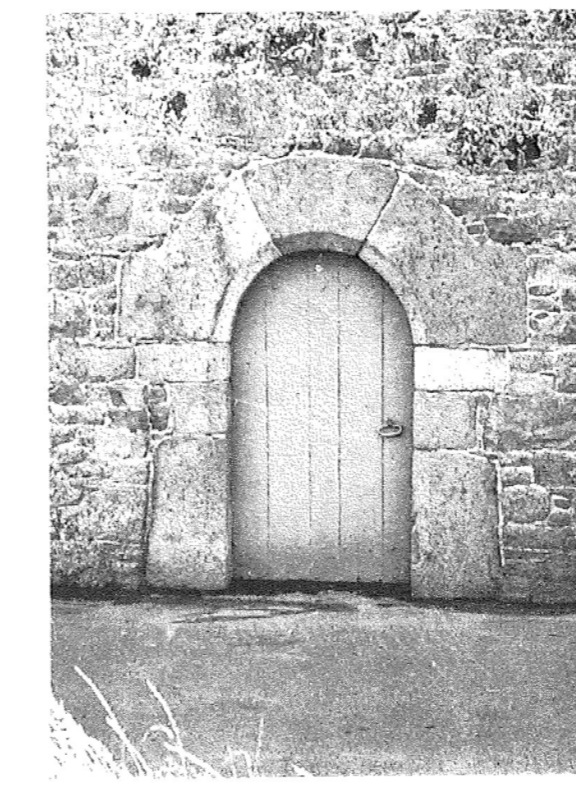


TYPICAL GRANITE QUOINS
1:10

ROUND ARCHES, Category 4, c. 1600–1700



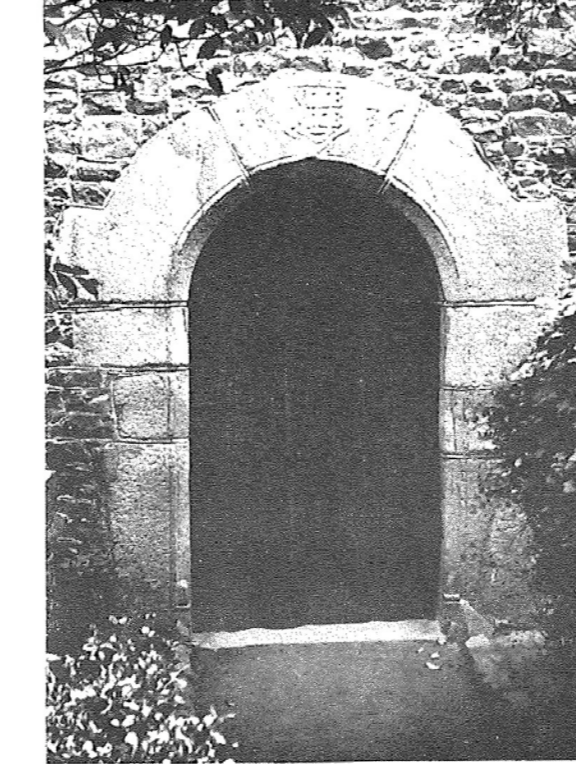
Bandinel (M)



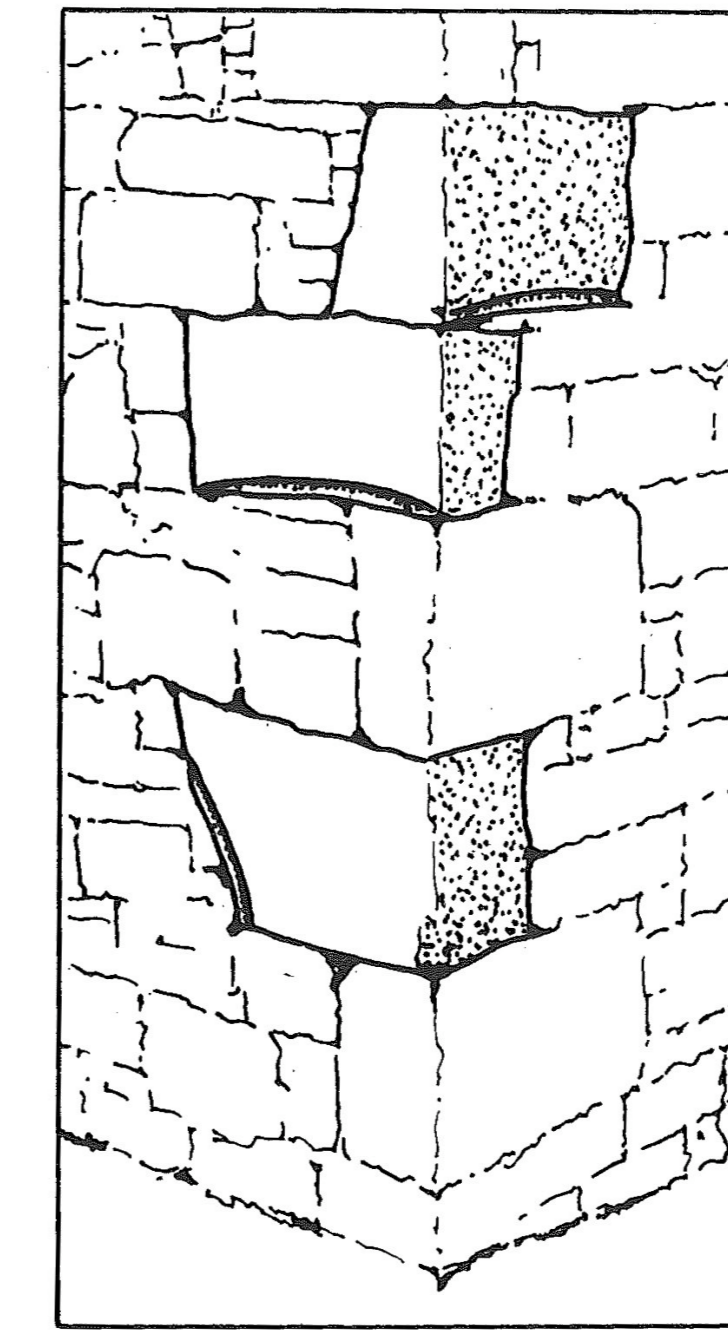
Roseland (G)



L'Amiral (O)



La Fosse (T), now at the Museum



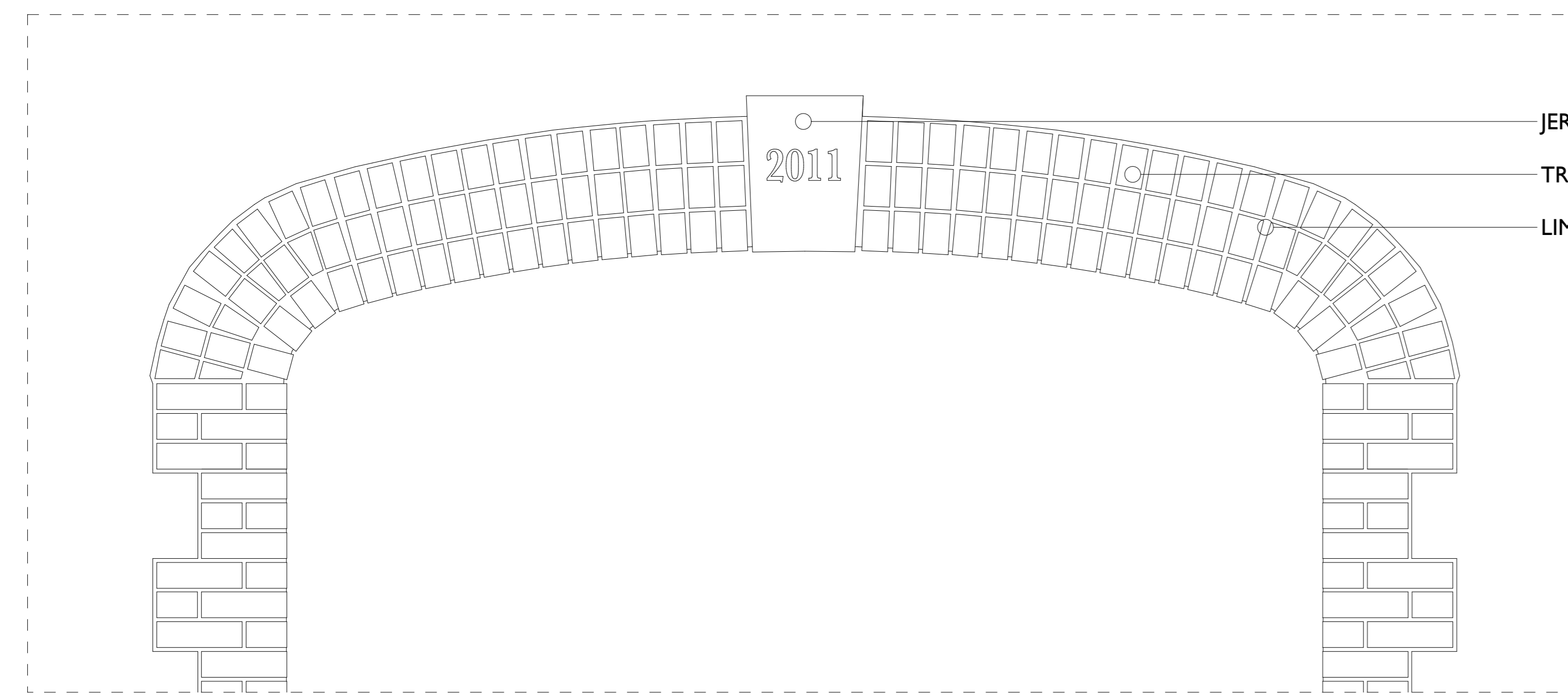
LEFT / ABOVE: Traditional Jersey precedents for '3 piece' arch openings and corner quoins (*Old Jersey Houses Series (1 & 2)*: Joan Stevens 1977)
 RIGHT: Example of quality of roughly dressed stone for 'farmhouse' style house types (see individual house specifications)



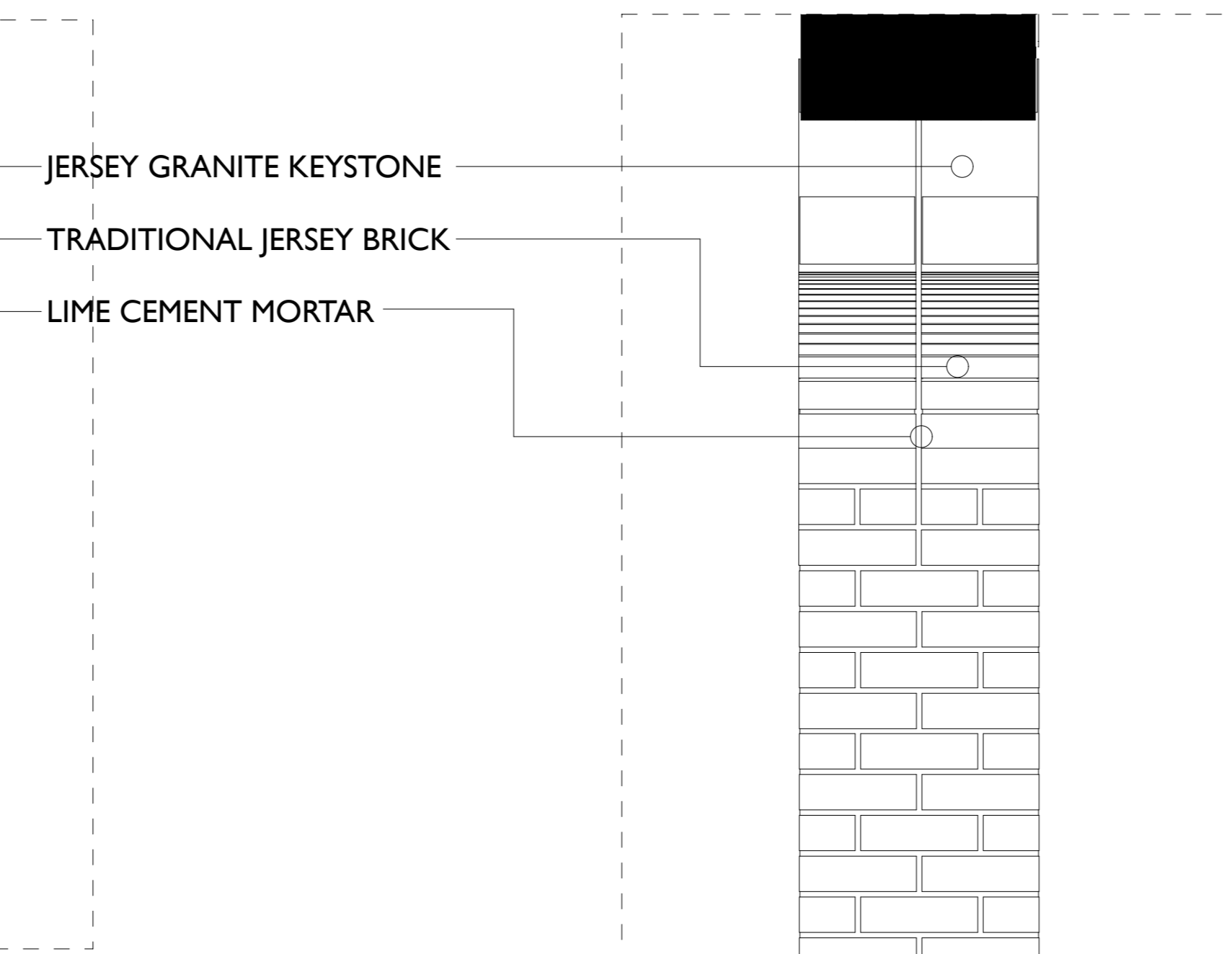
La Valeuse House (1766)



Hamptonne Country-Life Museum



BRICK ARCH ELEVATION
1:10



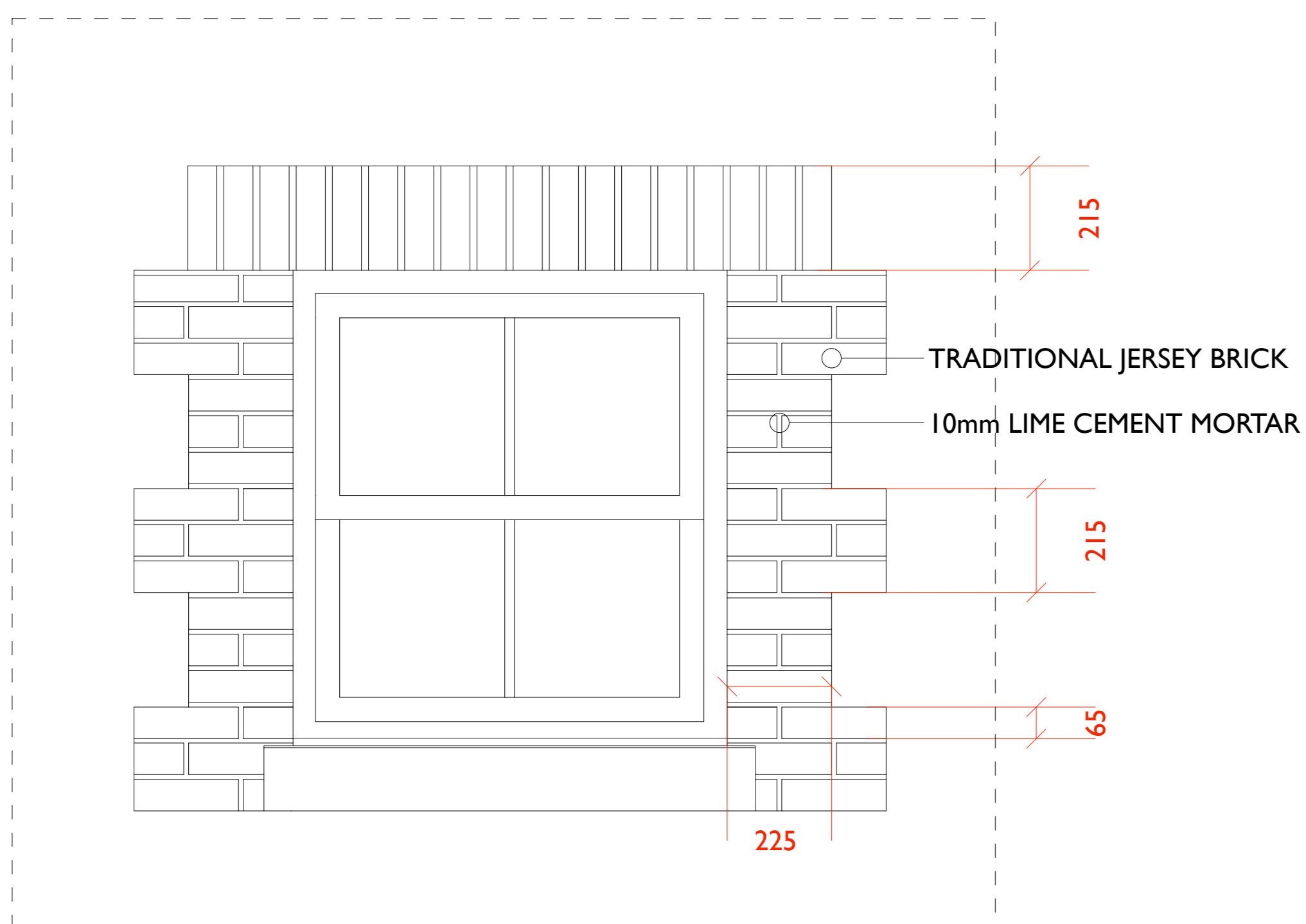
BRICK ARCH REVEAL SECTION DETAIL
1:10



DOUBLE ARCH ENTRANCE DETAIL
1:20

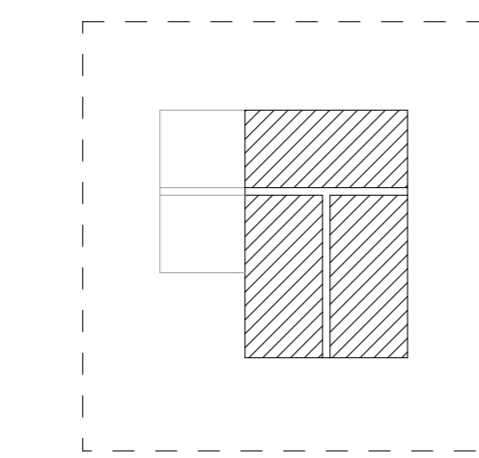
BRICK COPING
LIME MORTAR

CUSTOM CUT & DRESSED JERSEY GRANITE BLOCKS
(SEE PRECEDENTS FOR MATERIAL FINISH)

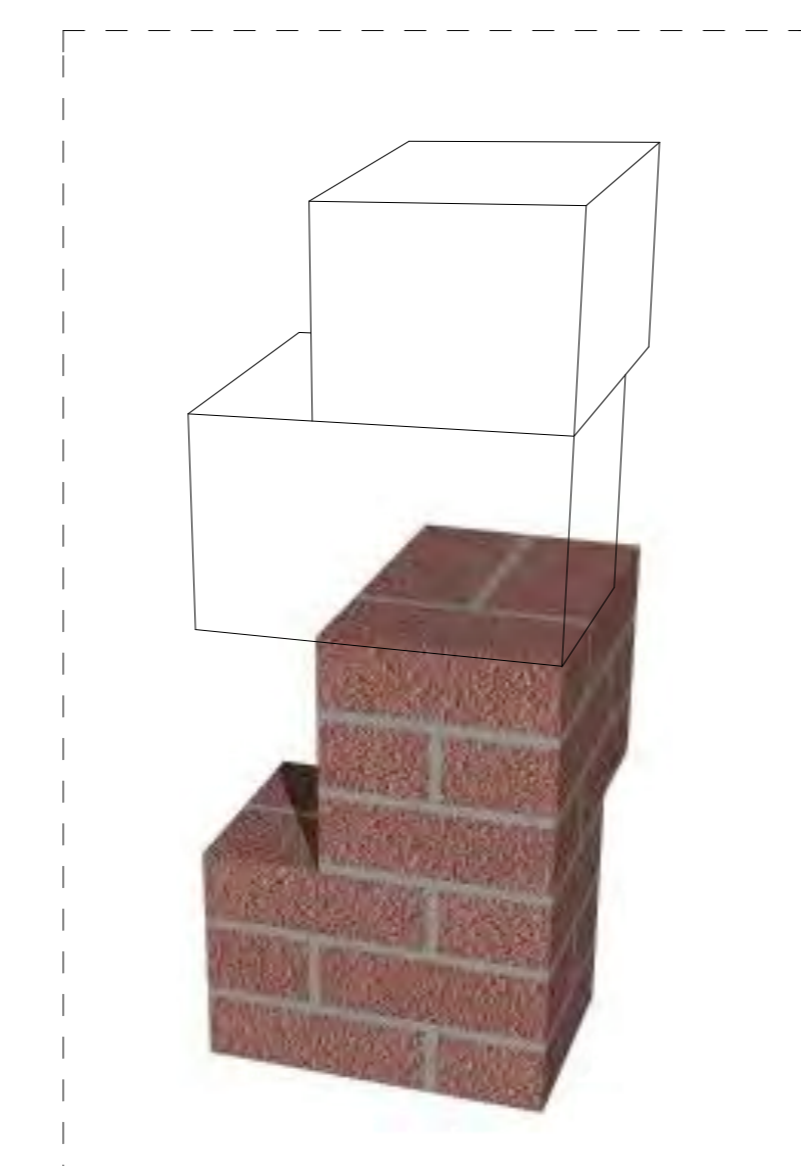


TRADITIONAL BRICK WINDOW QUOINS
1:10

| MATERIAL | IMAGE |
|--|-------|
| CUT & DRESSED JERSEY GRANITE (CILLS, LINTELS & VERGÉS) | |
| LIME CEMENT (MORTAR) | |
| RED BRICK (QUOINS, CHIMNEY & BELL TOWER) | |



BRICK CORNER PLAN DETAIL
1:10



BRICK CORNER AXONOMETRIC
1:15



ASIDE: Precedent, to show openings, materiality and finishes, Hamptonne Museum



ASIDE: Traditional Jersey precedent, to show ashlar granite blocks, Les Augres (1963)

PLANNING APPLICATION

B D K Architects
 White Lodge,
 Wellington Road,
 St. Saviour,
 JERSEY
 Channel Islands
 JE2 7TE
 Tel: +44 1534 768740
 Fax: +44 1534 739115
 E: Enquiry@BDKArchitects.com

| PROJECT / LOCATION | | DRAWING | |
|---|-------------------|---|--|
| PLEMONT BAY HOLIDAY VILLAGE PLEMONT 28 HOUSE DEVELOPMENT | | TYPICAL STONEMWORK DETAILS (GRANITE & BRICK) | |
| CLIENT | DRAWN | CHECKED | |
| PLEMONT ESTATES LTD. | SB | PH | |
| DATE | SCALE | DRAWING NUMBER | |
| JUNE 2010 | 1: 10 / 1:20 @ A0 | 1871/P/02 | |