



**PROPOSED DOORS WITH SIDE LIGHTS AND SEALED WINDOW OVER SEE DWG 1871/P/02**

MATERIAL	IMAGE
CUT & DRESSED JERSEY GRANITE (QUOINS, GILLS & LINTELS)	
RANDOM LAID, TRADITIONAL JERSEY GRANITE (EXTERIOR WALLS)	
PAINTED PRESERVATIVE TREATED SOFTWOOD - WHITE (FASCIAS & WINDOWS)	

DATED KEYSTONE IN FINELY DRESSED GRANITE WITH CARVED NUMERALS SEE DWG 1871/P/02

ROUGHLY DRESSED GRANITE FINISH TO WALLS WITH LIME MORTAR



**GLAZED DOOR WITH SIDE LIGHTS AND CARTWHEEL WINDOW ARCH INFILL**

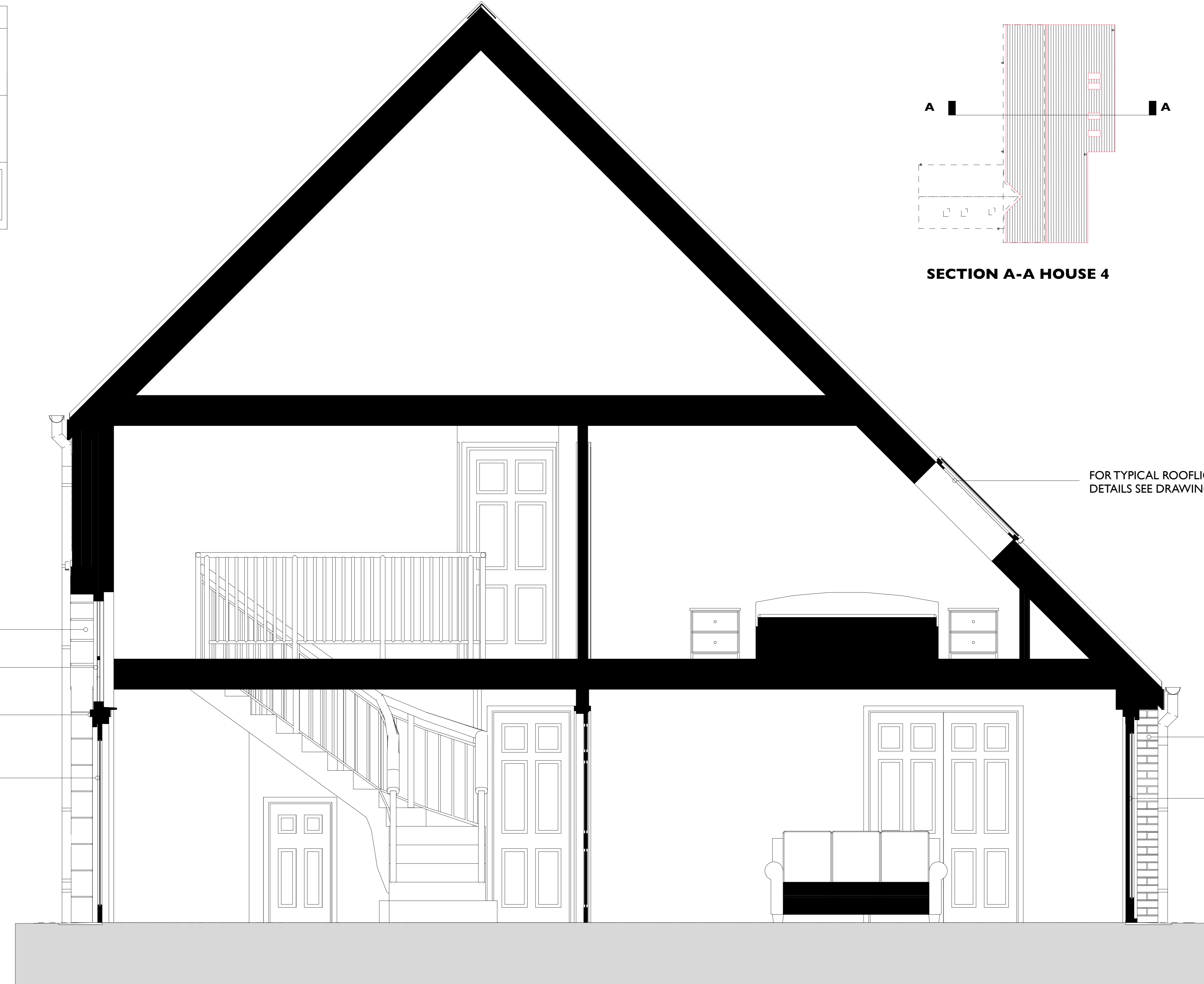
1:10

GRANITE QUOINS

CARTWHEEL WINDOW

TIMBER TRANSOM LINTOL

DOUBLE GLAZED DOORS



**SECTION A-A (HOUSE 4)**

1:20

SEALED DOUBLE GLAZED CARTWHEEL WINDOW WITH PAINTED TIMBER FRAME

PAINTED TIMBER TRANSOM LINTOL

DRESSED PINK GRANITE QUOINS WITH 10MM LIME MORTAR JOINTS SEE DWG 1871/P/02

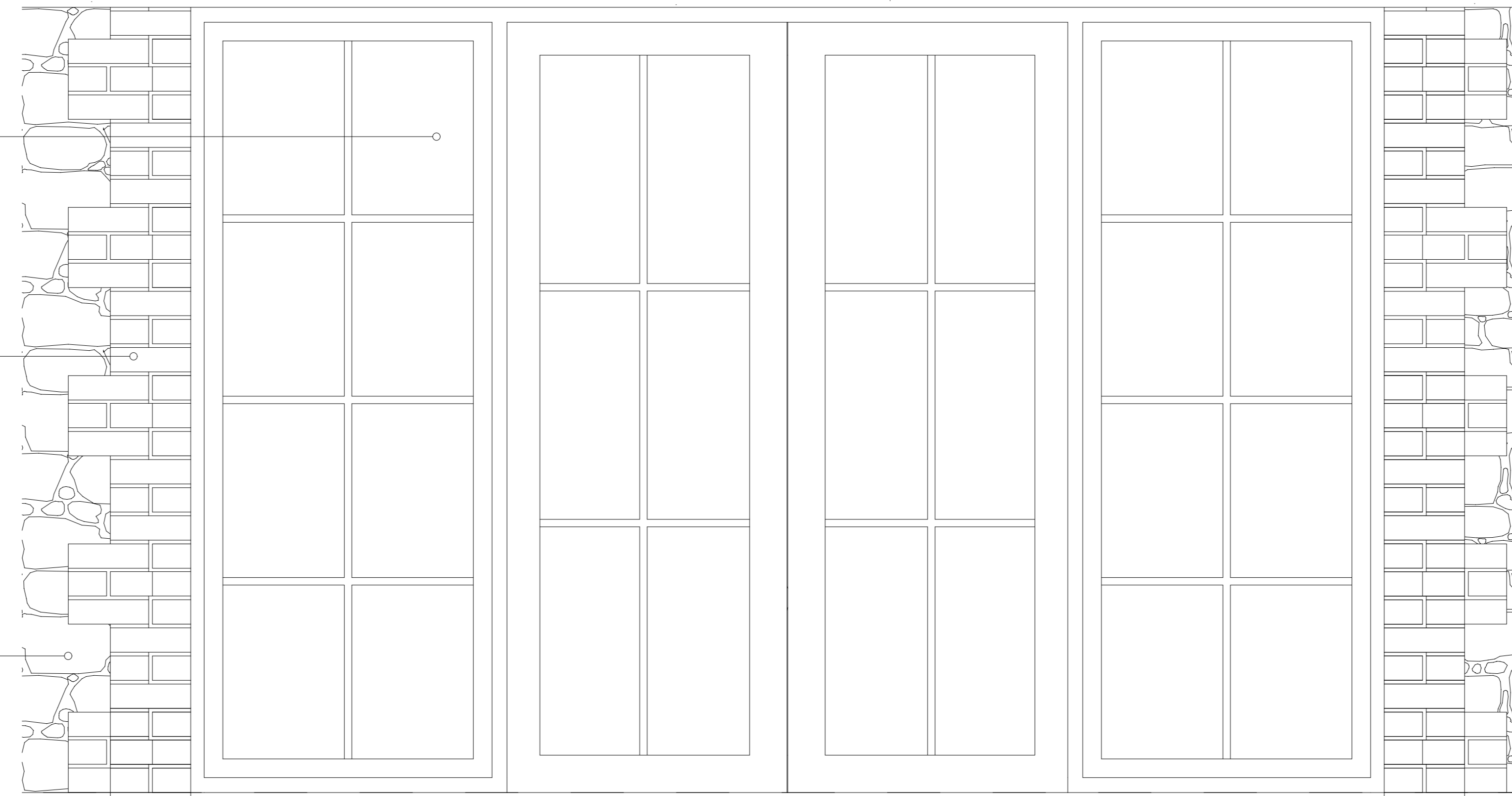
PAINTED TIMBER DOUBLE GLAZED DOORS AND SIDE LIGHTS WITH GLAZING BARS AS SHOWN

LEVEL THRESHOLD

PAINTED TIMBER DOUBLE GLAZED DOORS AND SIDE LIGHTS WITH GLAZING BARS AS SHOWN

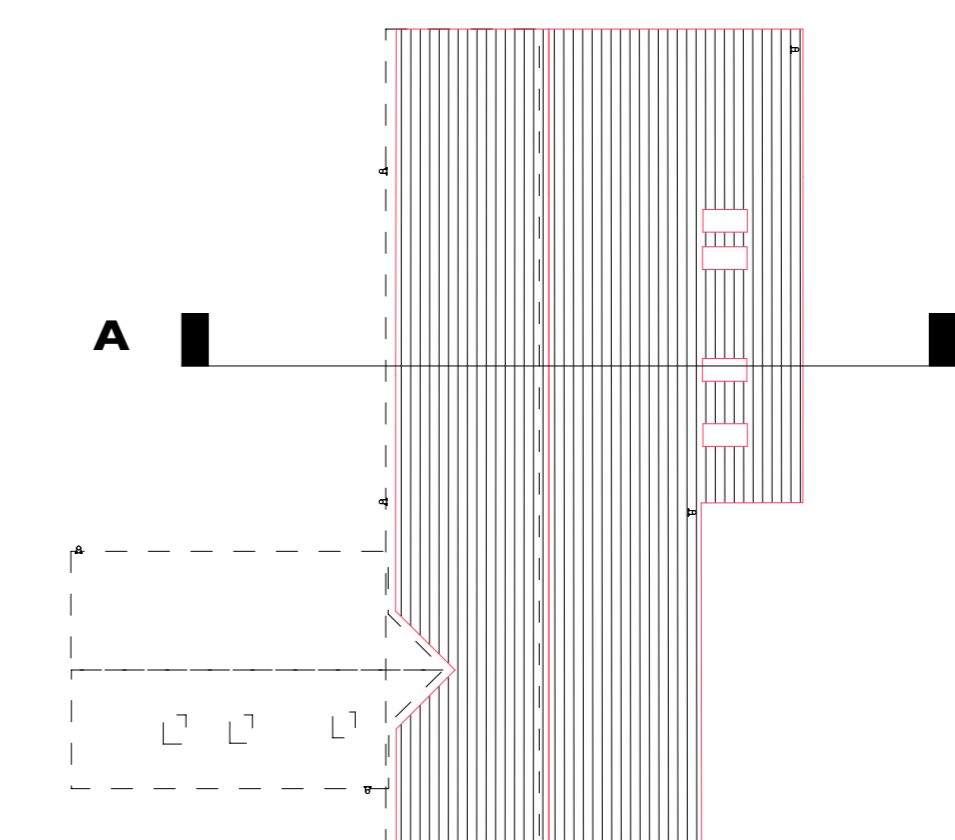
BRICK QUOINS WITH LIME MORTAR

ROUGHLY DRESSED GRANITE FINISH TO WALLS WITH LIME MORTAR SEE DWG 1871/P/02



**TYPICAL REAR GARDEN DOORS WITH SIDE LIGHTS**

1:10



**SECTION A-A HOUSE 4**

FOR TYPICAL ROOFLIGHT DETAILS SEE DRAWING 1871/P/01

**THIS DRAWING AND ALL DESIGN AND DETAILS ARE THE COPYRIGHT OF CHANNEL ARCHITECTS LTD.**  
 This drawing must be read in conjunction with all other drawings, details and specifications issued by the Architect, Structural Engineer and other Consultants or approved specialists. Discrepancies between any other drawings, details and/or specifications must be referred to the Architect for verification at least 7 days prior to commencement of the work. It is the Contractor's responsibility to ensure all work is carried out in accordance with all statutory requirements and to the approval of the Building Control Officer. All roof and structural timbers are to be vacuum preservative treated by approved methods before delivery to site. All roof decking or external plywood to be W.B.P. bonded external grade. All materials to comply with the latest British Standards Specification or have an Agrément Certificate. The Contractor is responsible for all setting out of the works. Use written dimensions only, do not scale off drawings. All dimensions and setting out must be checked on site.

REVISIONS

MATERIAL	IMAGE
RED BRICKWORK (QUOINS, OPENING DRESSINGS & CHIMNEYS)	
RANDOM LAID, TRADITIONAL JERSEY GRANITE (EXTERIOR WALLS)	
PAINTED PRESERVATIVE TREATED SOFTWOOD - WHITE (FASCIAS & WINDOWS)	

GRANITE QUOINS

DOUBLE GLAZED REAR DOORS



**PROPOSED GARDEN DOORS WITH SIDE LIGHTS AND BRICK QUOINS IN GRANITE WALLS SEE DWG 1871/P/02**

**PLANNING APPLICATION**

**B D K Architects**  
 White Lodge,  
 Wellington Road,  
 St. Saviour,  
 JERSEY  
 Channel Islands  
 JE2 7TE  
 Tel: +44 1534 768740  
 Fax: +44 1534 739115  
 E: Enquiry@BDKArchitects.com



PROJECT / LOCATION		DRAWING	
PLEMONT BAY HOLIDAY VILLAGE 28 HOUSE DEVELOPMENT		TYPICAL ARCH & PATIO DOORS SECTIONS & DETAILS (HOUSE 4)	
CLIENT	PLEMONT ESTATES LTD	DRAWN	CHECKED
DATE	JUNE 2010	PM	PH
SCALE	1:20 & 1:10 @ A0	DRAWING NUMBER	1871/P/08