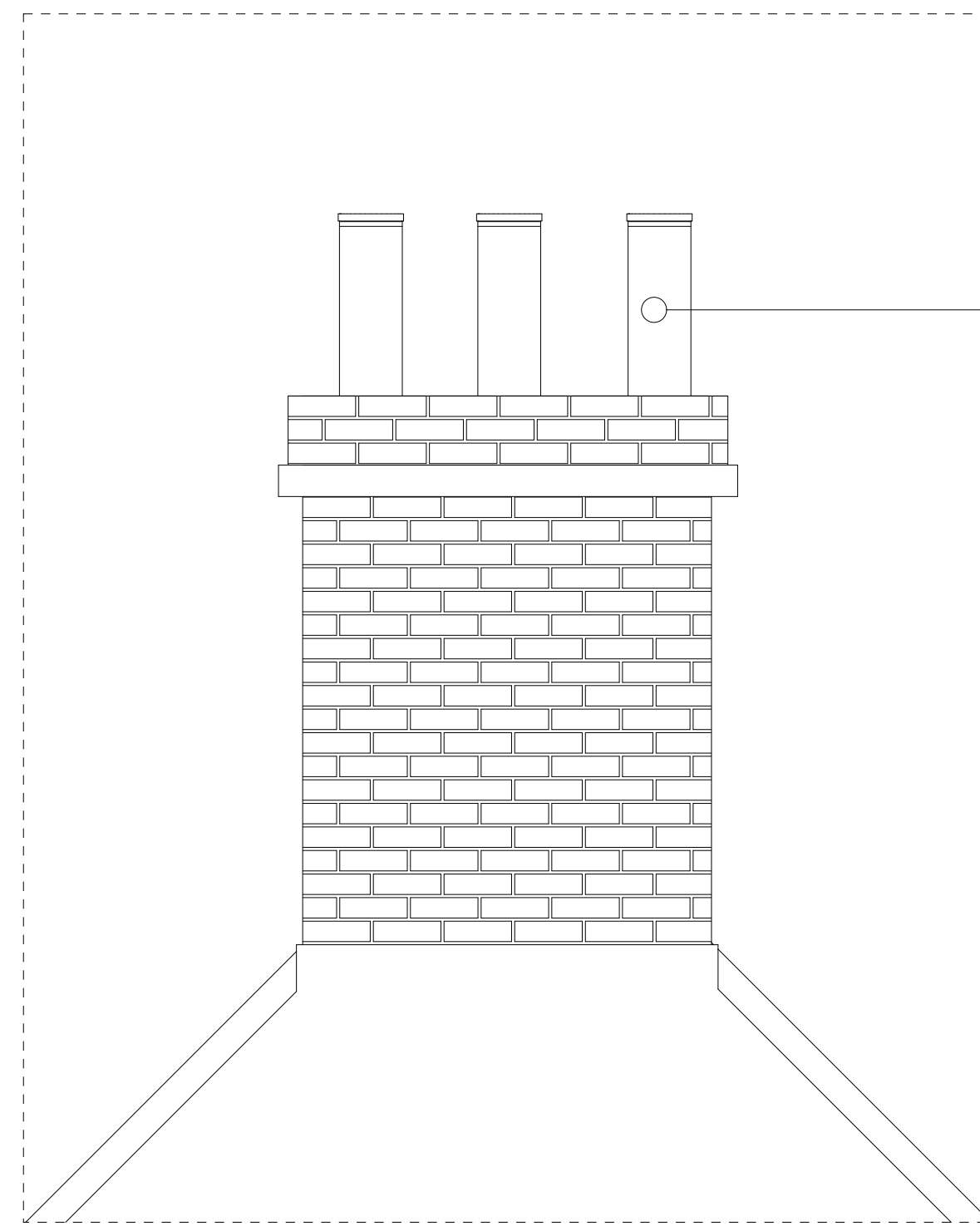
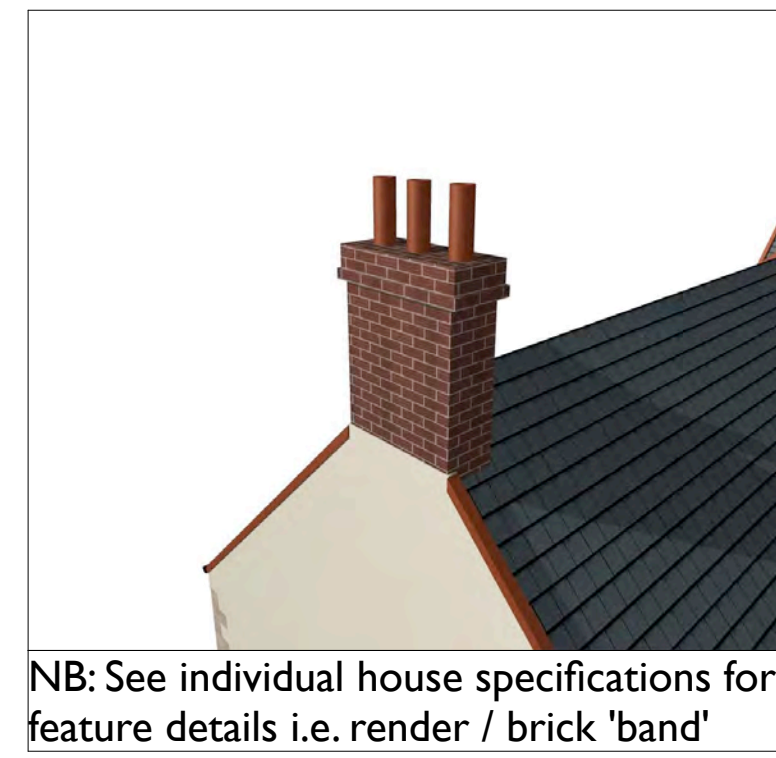


THIS DRAWING AND ALL DESIGN AND DETAILS ARE THE COPYRIGHT OF CHANNEL ARCHITECTS LTD.
 This drawing must be read in conjunction with all other drawings, details and specifications issued by the Architect, Structural Engineer and other Consultants or approved specialists. Discrepancies between any other drawings, details and/or specifications must be referred to the Architect for verification at least 7 days prior to commencement of the work. It is the Contractor's responsibility to ensure all work is carried out in accordance with all statutory requirements and to the approval of the Building Control Officer. All roof decking or external plywood to be W.B.P. bonded external grade. All materials to comply with the latest British Standards Specification or have an Agrément Certificate. The Contractor is responsible for all setting out of the works. Use written dimensions only, do not scale off drawings. All dimensions and setting out must be checked on site.
 If in any doubt refer to the Architect prior to commencement of the work.

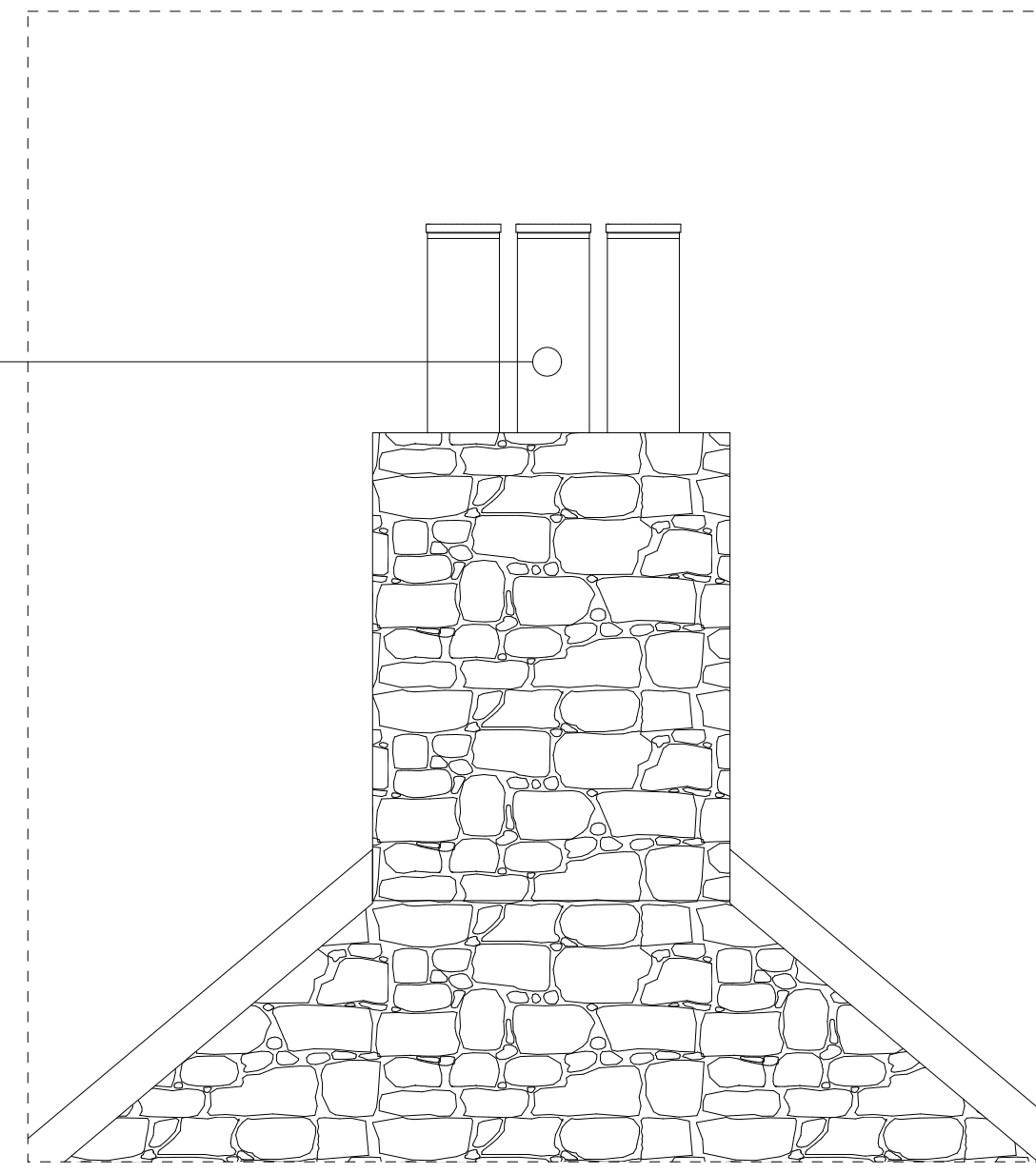
REVISIONS



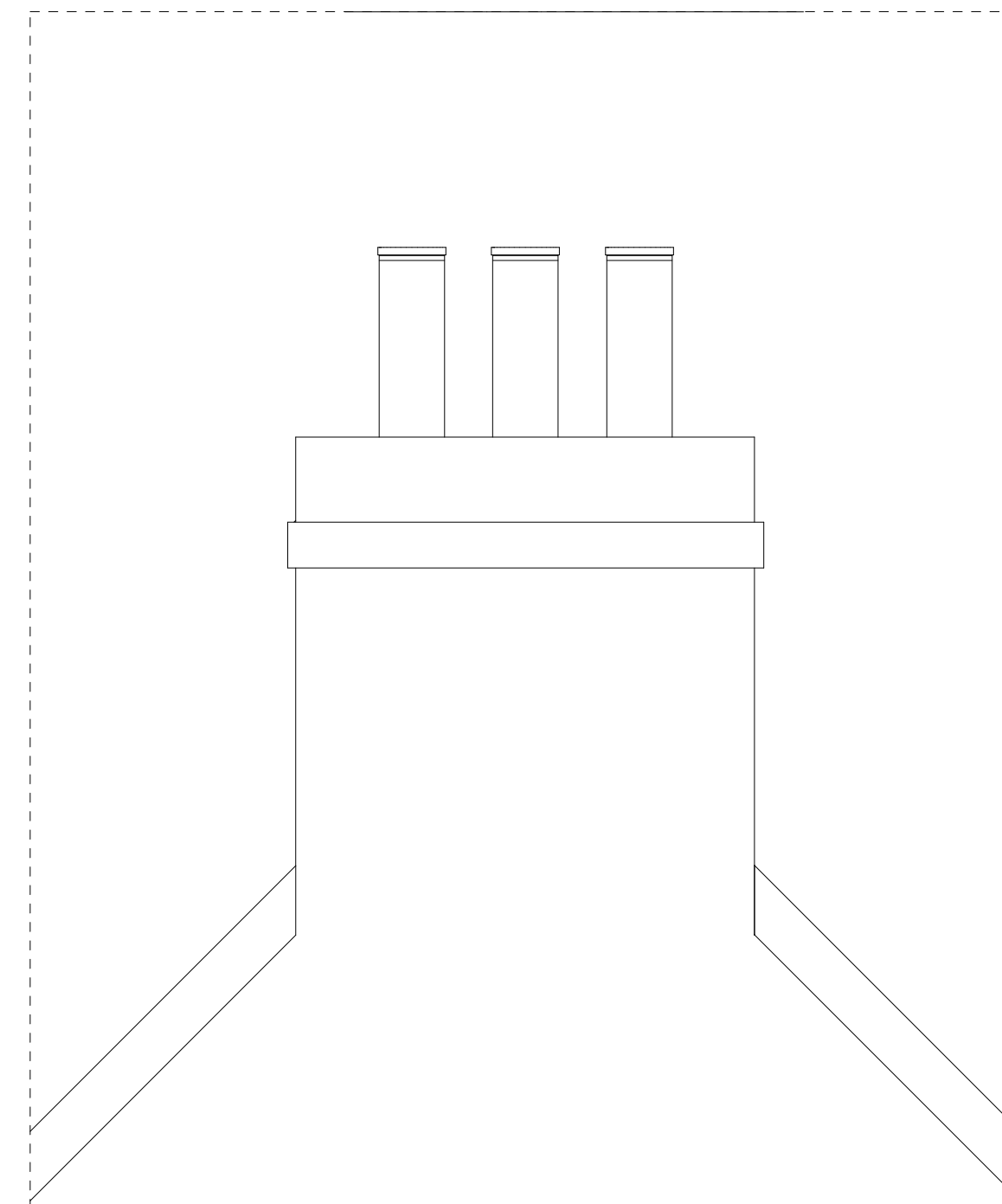
TYPICAL CHIMNEY DETAIL (BRICK)
1:20



NB: See individual house specifications for feature details i.e. render / brick 'band'



TYPICAL CHIMNEY DETAIL (GRANITE)
1:20



TYPICAL CHIMNEY DETAIL (RENDER)
1:20

TERRACOTTA JERSEY 'PANTILE' (ROOF)

CUT & DRESSED JERSEY GRANITE (CILLS, LINTELS & VERGES)

SEE DRAWING NUMBER 1871/P/01 FOR DETAIL

PAINTED CEMENT (CILLS)

TRADITIONAL DOUBLE ARCH WITH QUOIN AND FEATURE STONE DETAILING (SEE DRAWING NUMBER 1871/P/02 FOR ARCH DETAILS AND MATERIALITY)

ASHLAR GRANITE BLOCKS (SEE ALSO DRAWING NUMBER 1871/P/02 FOR FURTHER PRECEDENTS)

PAINTED PRESERVATIVE TREATED SOFTWOOD - WHITE (FASCIAS, WINDOWS & INTERNAL DOORS)

TRADITIONAL BLUE/GREY SLATE (ROOF)

FEATURE 'BAND' (SEE INDIVIDUAL SPECS.)

CLAY POTS (CHIMNEY)

PAINTED MORTAR (VERGES)

CUT & DRESSED JERSEY GRANITE (CILLS, LINTELS & VERGES)



ABOVE: Precedent, La Vaieuse House, St Brelade



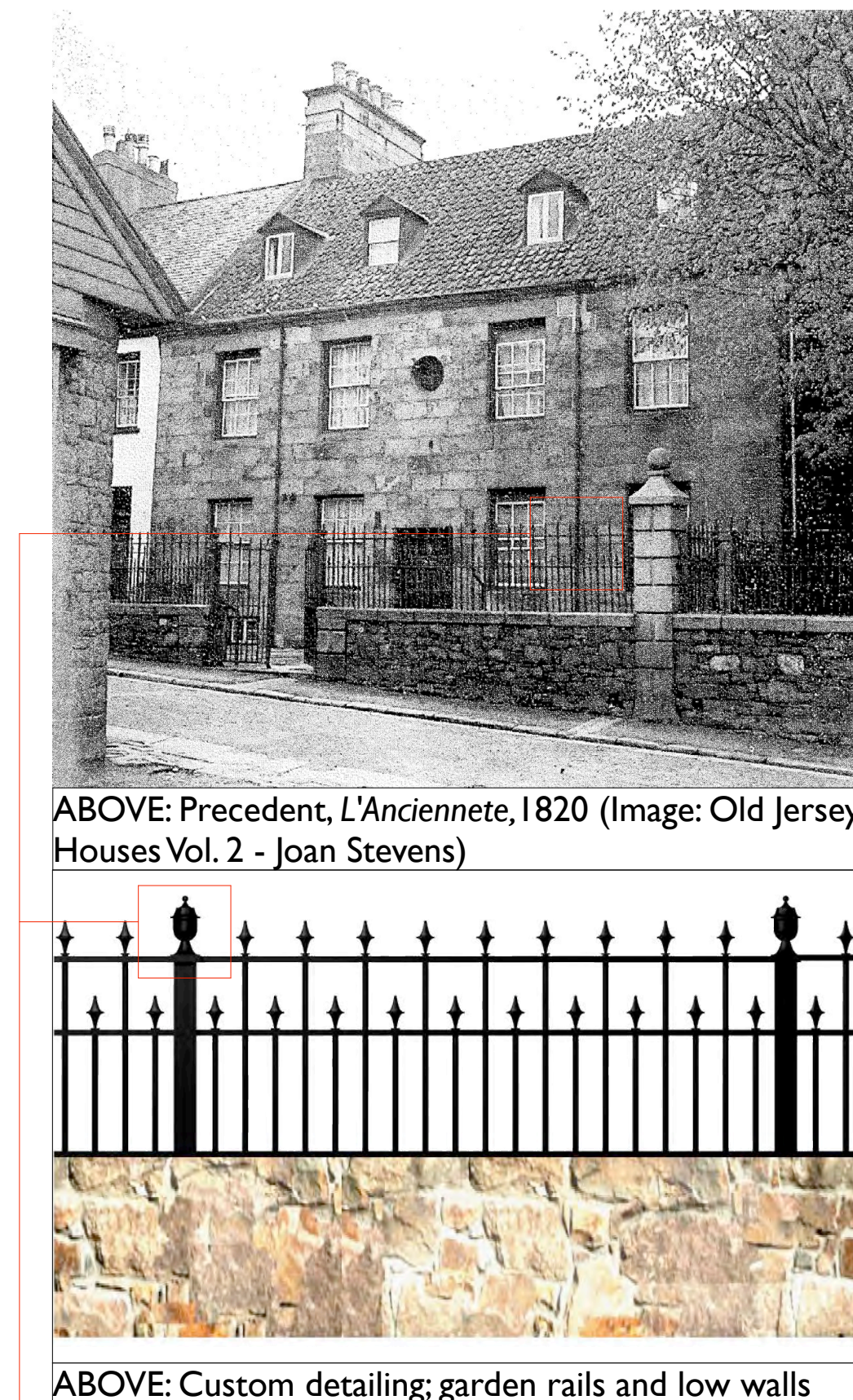
ABOVE: Precedent, St John



ABOVE: Precedent, Les Augres, Trinity



ABOVE: Precedent, Les Augres, Trinity



ABOVE: Precedent, L'Ancienne, 1820 (Image: Old Jersey Houses Vol. 2 - Joan Stevens)



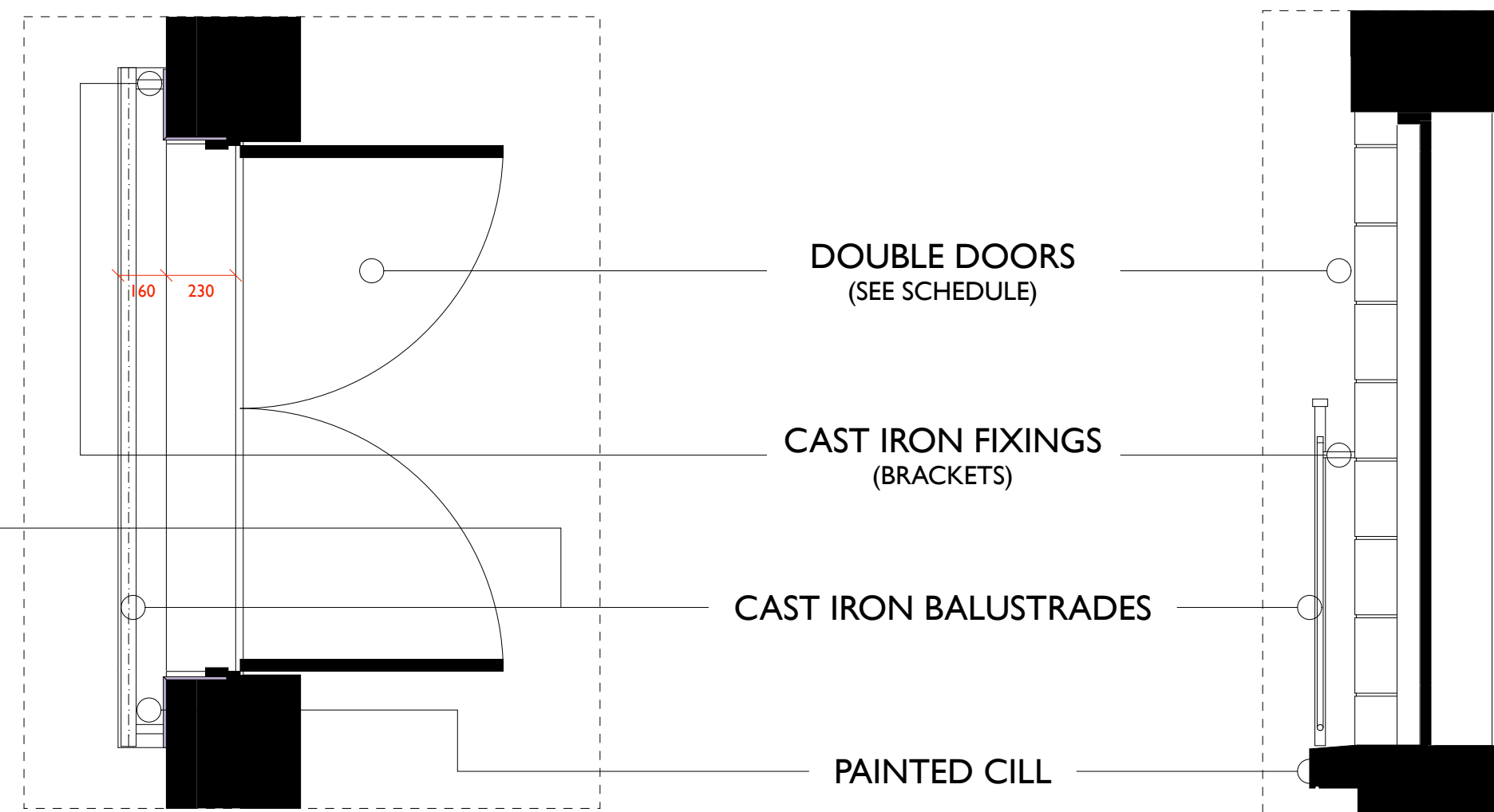
ABOVE: Custom detailing; garden rails and low walls



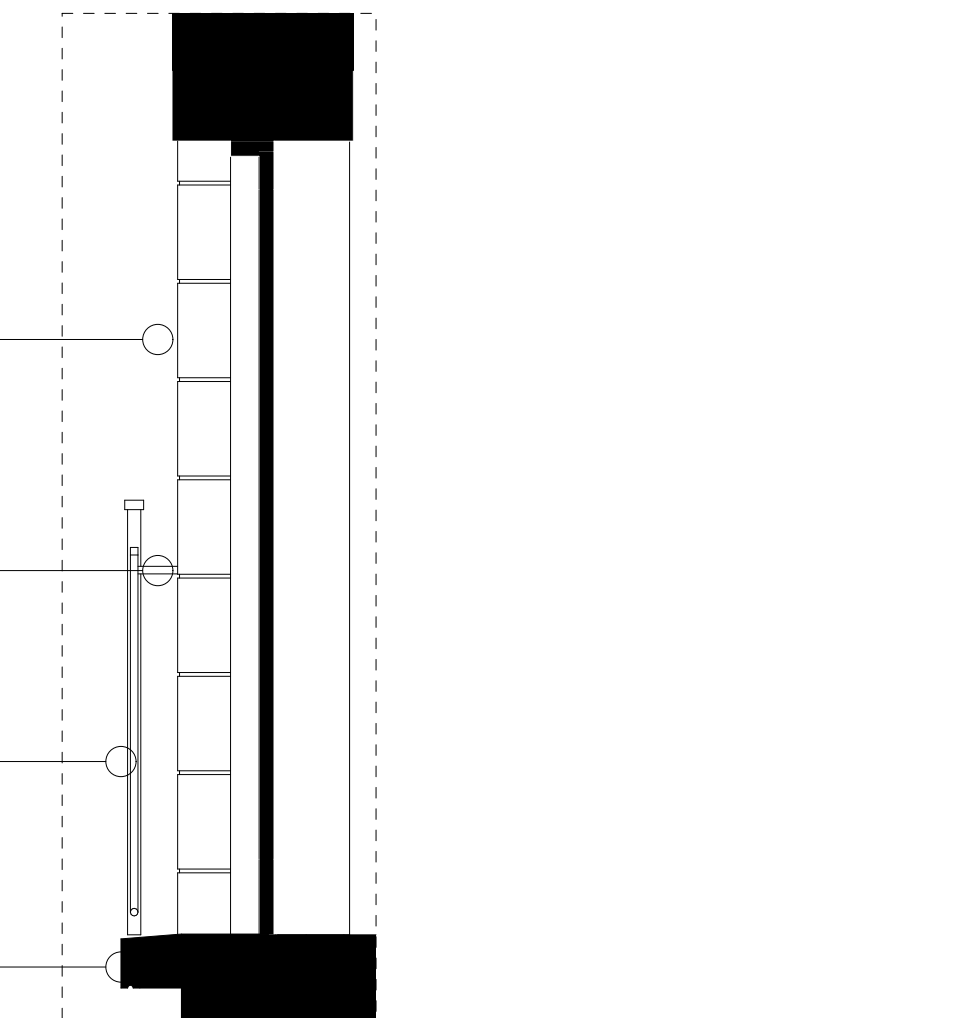
House 12, Plemont Holiday Village

PAINTED STONE VERGE
 PAINTED SOFTWOOD SOFFIT / FASCIA BOARDS
 CAST IRON GUTTERS AND DOWNPIPES

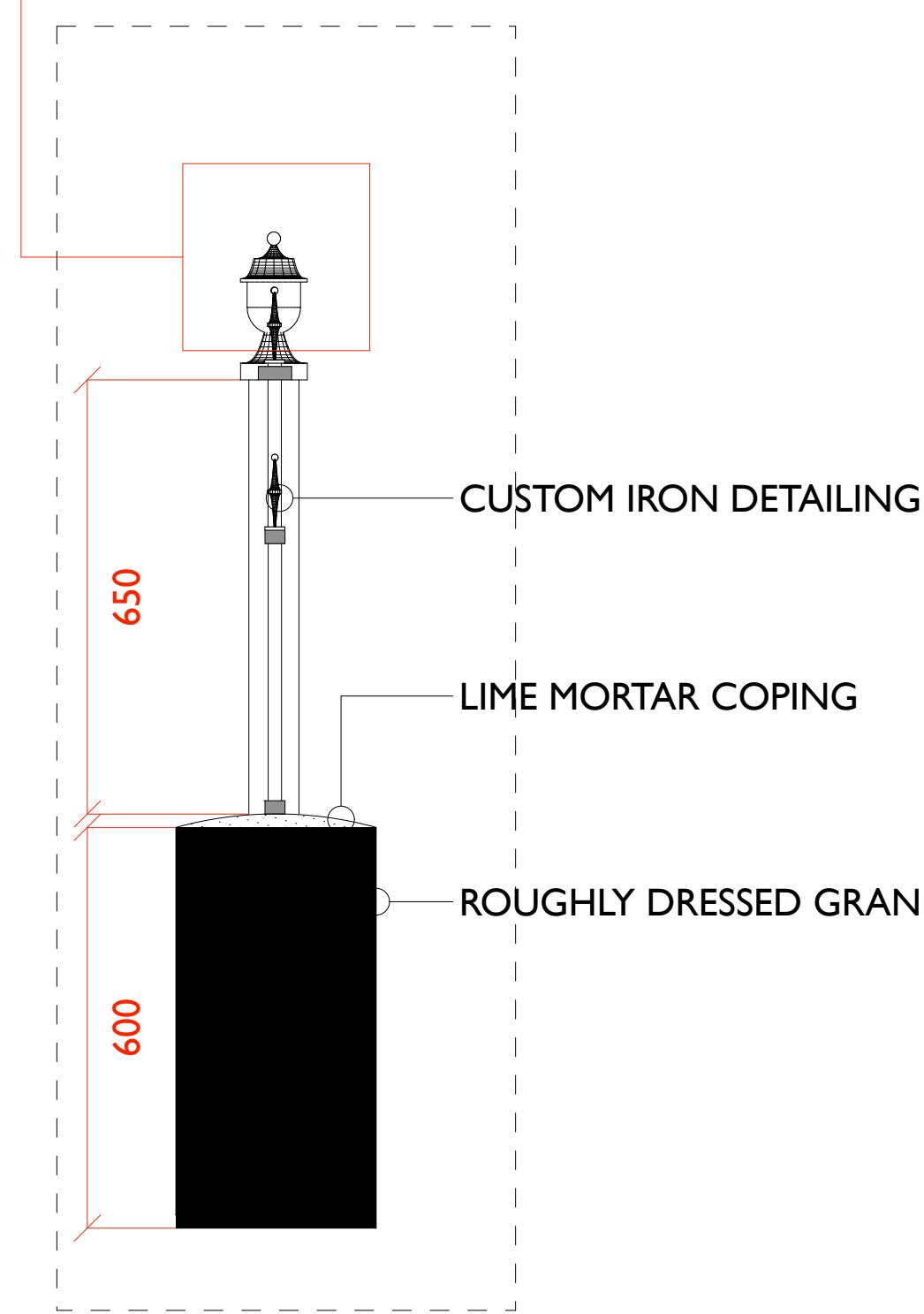
TYPICAL GUTTER DETAIL
1:10



TYPICAL JULIET BALCONY
1:20



BALCONY SECTION DETAIL
1:20



TYPICAL GARDEN WALL DETAIL
1:10

PLANNING APPLICATION

B D K Architects
 White Lodge,
 Wellington Road,
 St. Saviour,
 JERSEY
 Channel Islands
 JE2 7TE
 Tel: +44 1534 768740
 Fax: +44 1534 739115
 E: Enquiry@BDKArchitects.com



PROJECT / LOCATION		DRAWING	
PLEMONT BAY HOLIDAY VILLAGE PLEMONT 28 HOUSE DEVELOPMENT		TYPICAL DETAILS (GENERIC)	
CLIENT	PLEMONT ESTATES LTD.	DRAWN	CHECKED
DATE	JUNE 2010	SB	PH
SCALE	1: 10 / 1:20 @ A0	DRAWING NUMBER	1871/P/03