


# Registered Actively Seeking Work

## August 2015

Statistics Unit: [www.gov.je/statistics](http://www.gov.je/statistics)

 @JsyStats



### Summary

On 31 August 2015:

- on a **seasonally adjusted**<sup>1</sup> basis, the total number of people registered as actively seeking work (ASW) was<sup>2</sup>:
  - 50 lower than the previous month (July 2015);
  - 30 lower than the average (mean) for the preceding three months;
  - 120 lower than a year earlier, August 2014;
- the **non-seasonally adjusted** ASW total was 1,400; this total is 90 lower than in the previous month (July 2015) and 110 lower than twelve months earlier (August 2014);
- the number of teenagers (16-19 years) registered as ASW was 40 fewer than the previous month (July 2015) and 70 fewer than twelve months earlier (August 2014);
- **long-term ASW** (registered for more than twelve months) accounted for around one in seven (14%) of the total ASW; the number of long-term ASW (190 individuals) was essentially unchanged compared to the previous month (July 2015) and 60 fewer than twelve months earlier (August 2014). Of these 190 individuals, 100 were engaged in some form of paid employment but were classified as underemployed.

### Introduction

Data on people registered as actively seeking work in Jersey is compiled and administered by the Social Security Department. The Statistics Unit independently analyses this anonymised data and publishes a monthly report.

When interpreting the numbers presented, it should be noted that there is no legal requirement for unemployed residents of Jersey to register as actively seeking work (ASW) with the Social Security Department. The numbers shown constitute an informative set of indicators demonstrating the level of individuals actively seeking work in the Island at a given point in time.

The internationally comparable unemployment rate (as defined by the International Labour Organisation, ILO) includes people who are registered and also those who are not registered as unemployed and seeking work. The ILO unemployment rate for Jersey is measured by the Annual Social Survey and the Census; in recent years, the ILO unemployment rate for Jersey has been:

- 4.7% in March 2011, measured by the 2011 Jersey Census; this unemployment rate corresponded to 2,570 people being unemployed and looking for work in March 2011;
- 5.7% in June 2013, measured by the 2013 Jersey Annual Social Survey; this unemployment rate corresponded to 3,200 people being unemployed and looking for work in June 2013;
- 4.6% in June 2014, measured by the 2014 Jersey Annual Social Survey; this unemployment rate corresponded to 2,800 people being unemployed and looking for work in June 2014.

<sup>1</sup> Seasonal adjustment is a statistical technique, which enables examination of the underlying behaviour in a series of data by removing variations associated with the time of year, e.g. Christmas, Easter, academic year.

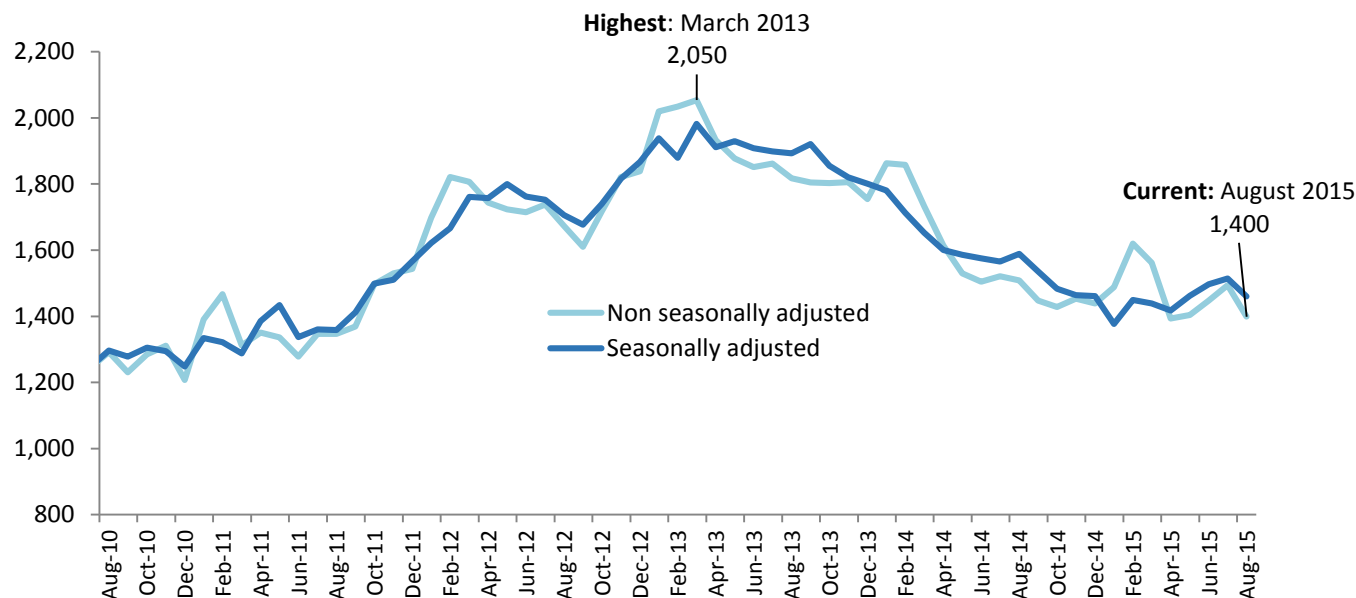
<sup>2</sup> ASW numbers presented in this report are rounded independently to the nearest 10.

## Registered Actively Seeking Work

On 31 August 2015, 1,400 people were registered with the Social Security Department as actively seeking work (ASW). Almost four-fifths (79%) of individuals registered as ASW on this date (corresponding to 1,110 people) were receiving Income Support<sup>3</sup>.

Figure 1 shows the total number of people registered as ASW at the end of each month since August 2010 (a table of the monthly data is shown in the [Appendix](#)). The total number registered in August 2015 was 90 lower than in the previous month (July 2015) and 110 lower than twelve months earlier (August 2014).

Figure 1 – Total number of individuals registered as ASW, August 2010 – August 2015



The seasonally adjusted series of the total registered as ASW, in which seasonal and calendar effects are removed, is also shown on Figure 1. From this perspective, the total number of people registered as ASW in Jersey in August 2015 was:

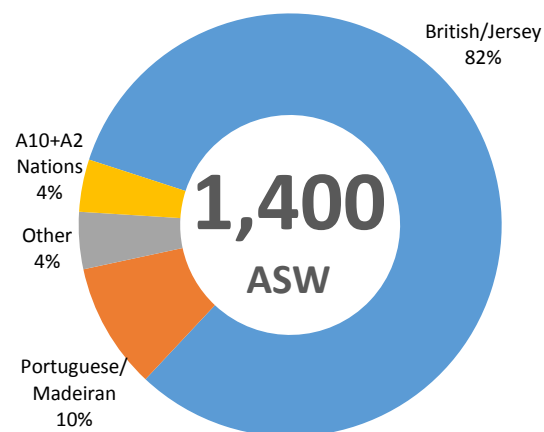
- 50 lower than the previous month, July 2015;
- 30 lower than the average (mean) for the preceding three-month period, May 2015 to July 2015;
- 120 lower than a year earlier, August 2014.

## Registered ASW by Nationality

On 31 August 2015:

- over four-fifths (82%) of people registered as ASW were of British/Jersey nationality<sup>4</sup>; there was a decrease of 80 such individuals compared with the previous month;
- there were 140 individuals of Portuguese/Madeiran nationality registered as ASW (10% of total), a decrease of 10 compared with the previous month (July 2015) and an increase of 10 compared with the corresponding month of 2014 (August 2014);
- there were 60 individuals from the EU Accession (A10+A2)<sup>5</sup> nations registered as ASW (4% of total), essentially unchanged compared with both the previous month (July 2015) and with August 2014.

Figure 2 – Individuals registered as ASW by nationality, August 2015



<sup>3</sup> The total number of adults receiving Income Support and not working will be greater than this figure, which represents the number of people receiving Income Support who were registered as ASW on 31 August 2015.

<sup>4</sup> Nationality recorded by the Social Security Department, for the purpose of registering as ASW, is self-reported.

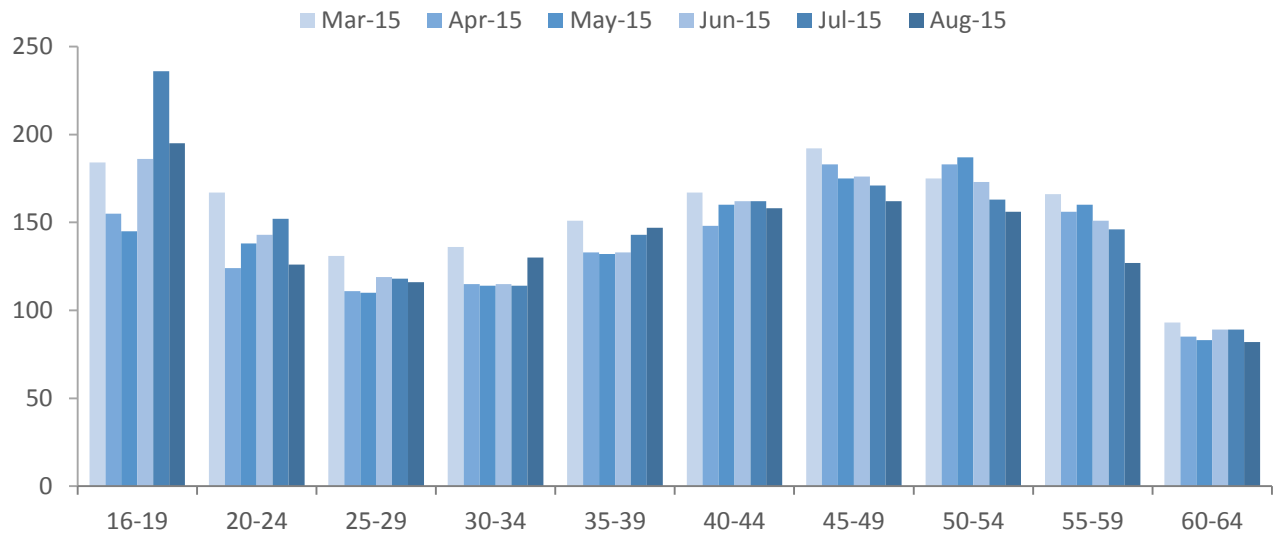
<sup>5</sup> The twelve countries which joined ("gained accession to") the European Union in May 2004 (Cyprus, the Czech Republic, Estonia, Hungary, Latvia, Lithuania, Malta, Poland, Slovakia and Slovenia) and January 2007 (Bulgaria and Romania).

## Registered ASW by age

On 31 August 2015, almost a quarter (23%) of people registered as ASW were under 25 years of age (320 individuals); around one in seven (14%) of the total were teenagers, aged 16-19 years (200 individuals).

Figure 3 shows the numbers registered as ASW by age of individuals in each of the last six months, from March 2015 to August 2015.

Figure 3 – Individuals registered as ASW by age, March 2015 – August 2015

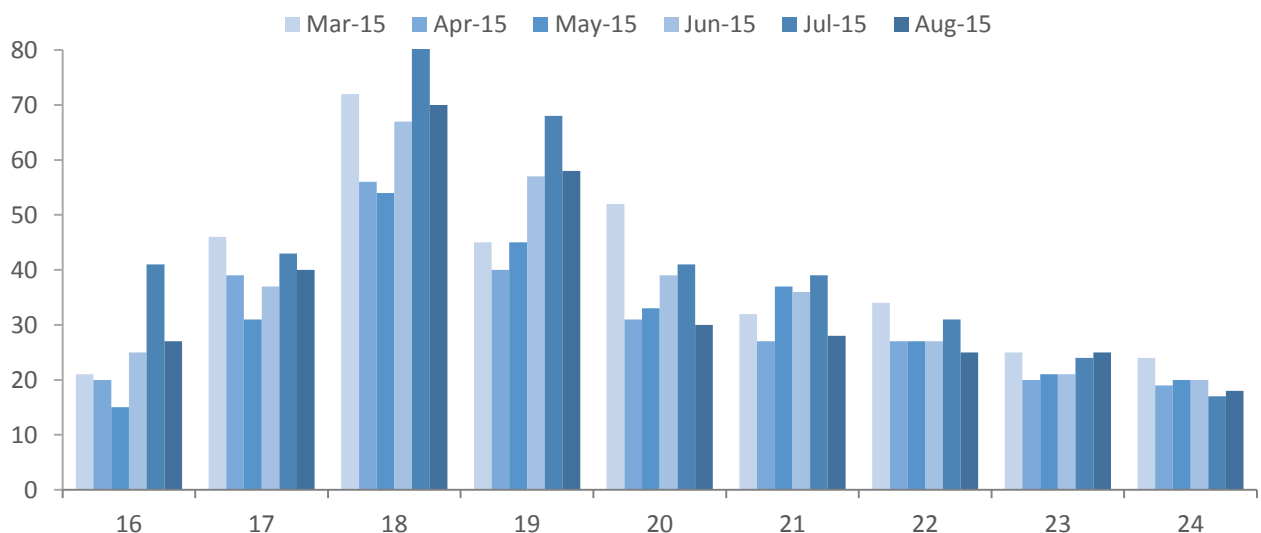


In the latest month, the majority of age groups were essentially unchanged in the number of people registered as ASW (changes of 10 or fewer individuals) compared with the previous month (July 2015). Several groups did record some notable changes:

- teenagers (16-19 years) saw the largest decrease in the total number of people registered as ASW, 40 lower than the previous month (July 2015) and 70 lower than in August 2014;
- 20-25 year olds also recorded a decrease in the number of people registered, 30 lower than both the previous month (July 2015) and August 2014;
- 55-59 year olds recorded decreased total numbers registered as ASW, 20 lower than the previous month (July 2015) and 10 lower than August 2014;
- 30-34 year olds, in contrast, recorded a monthly increase of around 20 individuals registered as ASW although the total was essentially unchanged compared with August 2014.

Figure 4 shows the age distribution for people below 25 years of age who were registered as ASW in the latest six months, from March 2015 to August 2015. Of those people registered as ASW at the end of August 2015, 120 were on the Advance to Work scheme.

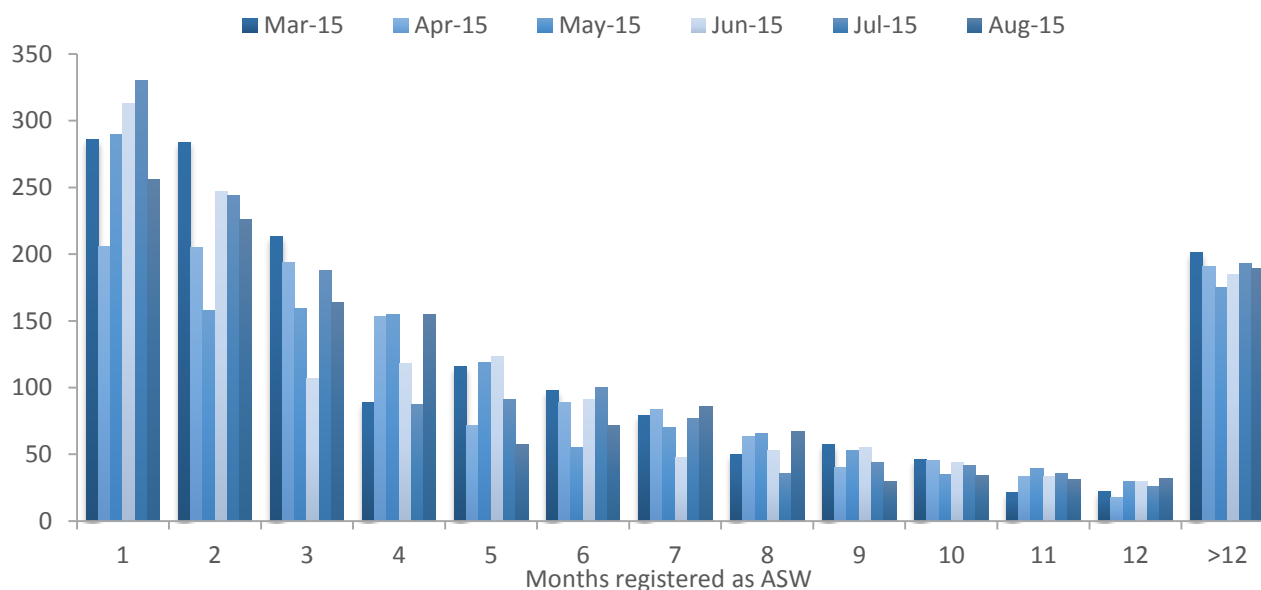
Figure 4 – Individuals under the age of 25 registered as ASW, March 2015 - August 2015



## ASW duration

Almost half (46%) of all people registered as ASW on 31 August 2015 had been registered for three months or less - see Figure 5.

Figure 5 – Registered ASW by length of period registered (months), March 2015 - August 2015

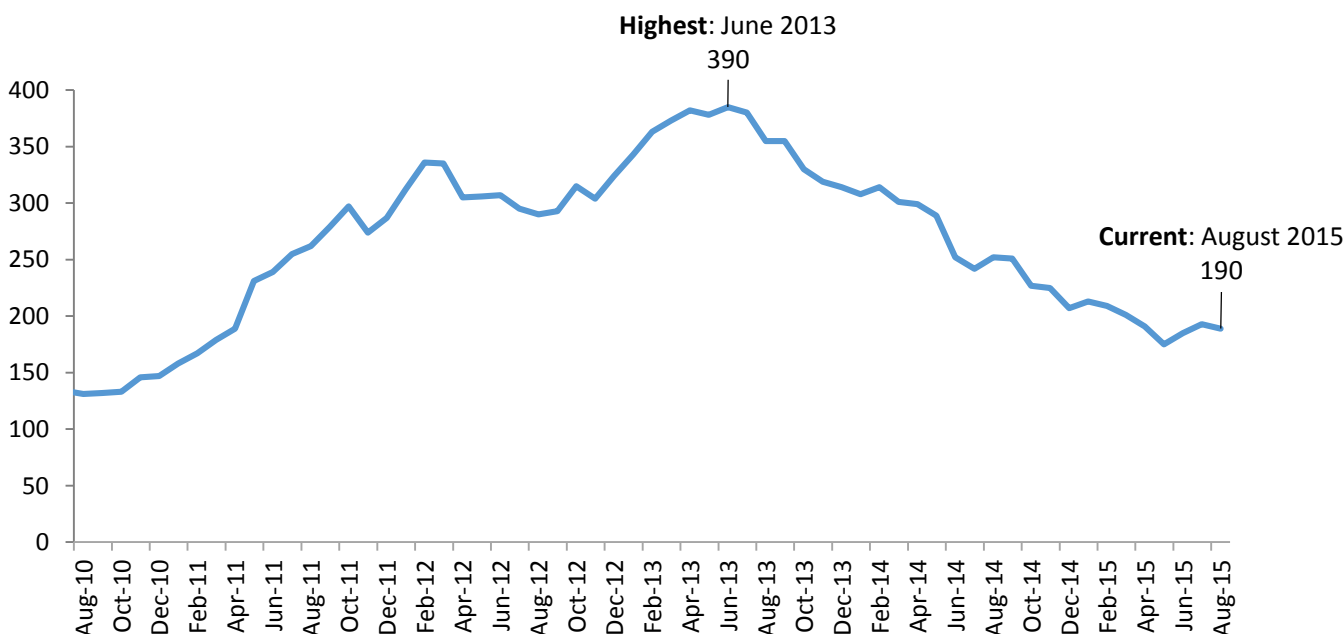


The number of new registrations in August 2015 (260 people) was 70 less than that recorded in the previous month (July 2015) and 20 less than a year earlier (August 2014).

## Long-term ASW

On 31 August 2015, there were 190 people who had been registered as ASW for more than twelve months, accounting for around one in seven (14%) of the total ASW. The latest number of long-term ASW was essentially unchanged compared with the previous month (July 2015) and 60 less than twelve months earlier (August 2014).

Figure 6 – Long-term ASW, August 2010 – August 2015



Of the 190 individuals that were registered as ASW for more than twelve months, 100 were engaged in some form of paid employment but were classified as underemployed<sup>6</sup>.

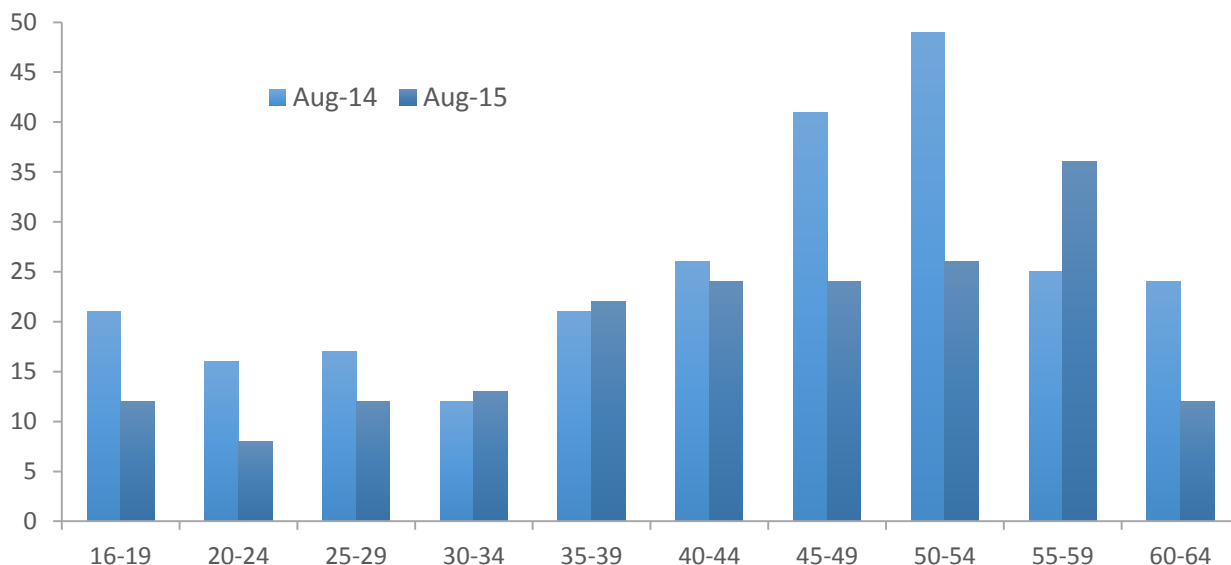
<sup>6</sup> See [ASW registered underemployment](#) – page 6 of this report.

Figure 7 shows the age distribution of the long-term ASW in August 2014 and August 2015.

Both the 45-49 and 50-54 age groups recorded 20 fewer individuals than twelve months earlier, whilst the 60-64 age group recorded 10 fewer individuals registered as long term ASW. In contrast, the 55-59 age group recorded an increase of around 10 individuals.

All other age groups were essentially unchanged (changes of less than 10 individuals compared to twelve months earlier).

Figure 7 – Long-term ASW by age, August 2014 and August 2015



## Industry

Individuals working in some industries of the economy, notably in the Finance sector, often seek employment through private agencies and do not register with the Social Security Department. Such industries will therefore tend to be under-represented in the ASW numbers.

The last industry of employment was recorded for around nine out of ten people registered as ASW on 31 August 2015:

- almost a quarter (24%) were previously employed in ‘Retail and Wholesale, Motor repairs and sales’;
- a sixth (17%) were previously employed in ‘Miscellaneous professional & domestic services’;
- 15% were previously employed in ‘Banking, Miscellaneous Insurance, Finance and Business’;
- 14% were previously employed in ‘Hotels, restaurants, pubs and clubs’.

## ASW registered underemployment

Individuals who are working fewer hours than they would like or who would like to change their current working situation are classified as underemployed. The International Labour Organisation (ILO) provides two definitions of underemployment<sup>7</sup>:

- *time related underemployed*, which is due to insufficient hours of work;
- *inadequate employment situations*, which are due to other limitations in the labour market, which limit the capacities and well-being of workers.

In Jersey, individuals who are in receipt of Income Support are required to work at least 35 hours per week, unless exempt from full-time work; those who do not meet this requirement must register as Actively Seeking Work. Hence, the ASW total figure includes individuals who are working less than the 35 hours per week required under the terms of Income Support. The number of ASW registered underemployed also includes individuals who are on the Foundations programme and engaged in paid work of 30 hours per week; in August 2015 there were 50 such individuals. Both sets of employed individuals will simultaneously be working and actively seeking work, and are classified as underemployed under the ILO definition of *time related underemployment*.

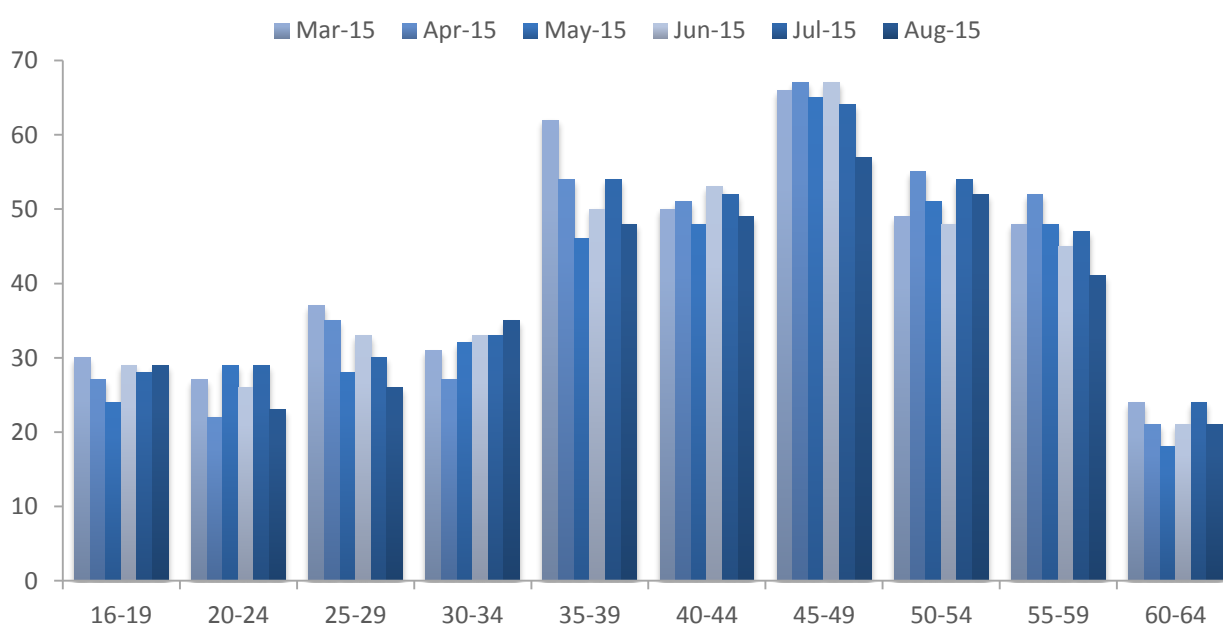
In August 2015, over a quarter (27%) of all people registered as ASW were underemployed; the numbers of such individuals in each of the last twelve months are shown in Table 1.

Table 1 – Number of ASW registered underemployed, August 2014 – August 2015

	Aug 14	Sep 14	Oct 14	Nov 14	Dec 14	Jan 15	Feb 15	Mar 15	Apr 15	May 15	Jun 15	Jul 15	Aug 15
<b>Individuals</b>	360	360	370	390	410	390	410	420	410	390	410	420	380
<b>Percentage of total ASW</b>	24%	25%	26%	27%	28%	26%	25%	27%	29%	28%	28%	28%	27%

Figure 8 shows the age distribution of people registered as ASW underemployed; nearly half (45%) were aged 45 years or over.

Figure 8 - Age distribution of ASW registered underemployed, March 2015 - August 2015



Of those people who were registered as ASW underemployed in August 2015: three-fifths (60%) were female; over a quarter (27%) had been actively seeking work for more than a year; and 89% were claiming Income Support.

<sup>7</sup> International Labour Organisation: *Resolution concerning the measurement of underemployment and inadequate employment situations*.

## Notes

The number of people registered as ASW includes people who are on the Advance to Work, Advance Plus and Work Right schemes. The ASW total will also include individuals who are working fewer than the 35 hours per week required under the terms of Income Support; such individuals will simultaneously be working and registered as actively seeking work.

When placing the figures contained in this report in a longer-term historical context it should be recognised that there have been significant changes in the criteria relating to registered ASW in Jersey in recent years. In particular, the introduction of Income Support in 2008 led to greater numbers of individuals who were actively seeking work being included in the registered figures.

People who are registered as actively seeking work receive the support of one of the government employment schemes, which come under the administration of Back to Work:

- Advance to Work – for jobseekers aged 16 - 24 years;
- Advance Plus – for jobseekers aged 20 - 65 years with an industry-specific interest;
- Work Right – for jobseekers with barriers to employment or who have been registered as ASW for 52 weeks or longer;
- Work Zone – for registered jobseekers who are closer to employment;
- Ready for Work – for newly registered jobseekers or jobseekers without a dedicated advisor.

In addition to the above, some individuals registered as ASW will be assisted by the Jersey Employment Trust (JET), a registered charity whose role is to assist people with a disability to prepare, find and maintain employment. On 31 August 2015 there were 100 such individuals being assisted by JET.

As well as the development and expansion of the above schemes, Back to Work is responsible for:

- the Employment Incentive;
- a dedicated Back To Work Recruitment Team;
- industry and employer specific initiatives.

The aim of Back to Work is to increase access to job opportunities for locally qualified people who are registered as actively seeking work by supporting jobseekers and building a partnership with employers to provide sustainable job opportunities.

## Changes in ASW Recording Criteria

Whilst there is no legal requirement for unemployed residents of Jersey to register as actively seeking work (ASW) with the Social Security Department, there are certain requirements to register for those in receipt of income support payments. Changes to these requirements as well as certain administrative changes within Social Security can result in changes in the total number of people being considered as ASW. The most recent such changes are as follows:

- May 2015 - Change of classification for certain self-employed individuals who are seeking further employment. This administrative change involved the reclassification of **70** such individuals who are now recorded as ASW.
- February 2015 - The threshold for the cumulative Long Term Incapacity Allowance (LTIA) percentage rate was increased from 35% to 40%. As any individuals below this threshold, in receipt of an Income Support claim, are required to register as ASW, the raising of the LTIA threshold resulted in an additional **90** individuals being registered as ASW at the end of February 2015 compared with the previous month.
- April 2014 – Prior to this point, the end-of-month ASW figures published by the Statistics Unit were based on data compiled by the Social Security Department on (or around) the 15th of the following month. From the April 2014 report onwards the end-of-month figures published are based on data compiled on (or around) the 1st of the following month. Moving the data compilation date forward by two weeks introduced a small upward systematic shift (of approximately **20** individuals) in the number of people classified as ASW at each end-of-month.

## Appendix

Number of individuals registered as ASW, Jan 2010 – August 2015<sup>8</sup>

		Male	Female	Total	Seasonally adjusted total			Male	Female	Total	Seasonally adjusted total
<b>2010</b>	<b>Jan</b>	770	440	1,200	1,150	<b>2013</b>	<b>Dec</b>	1,100	740	1,840	1,870
	<b>Feb</b>	810	510	1,320	1,180		<b>Jan</b>	1,210	810	2,020	1,940
	<b>Mar</b>	720	450	1,170	1,130		<b>Feb</b>	1,210	820	2,030	1,880
	<b>Apr</b>	710	430	1,140	1,180		<b>Mar</b>	1,230	820	2,050	1,980
	<b>May</b>	670	390	1,060	1,150		<b>Apr</b>	1,140	800	1,930	1,910
	<b>Jun</b>	690	420	1,110	1,130		<b>May</b>	1,080	800	1,880	1,930
	<b>Jul</b>	760	490	1,240	1,250		<b>Jun</b>	1,040	810	1,850	1,910
	<b>Aug</b>	810	490	1,290	1,300		<b>Jul</b>	1,030	840	1,860	1,900
	<b>Sep</b>	770	460	1,230	1,280		<b>Aug</b>	990	820	1,820	1,890
	<b>Oct</b>	840	450	1,290	1,300		<b>Sept</b>	1,000	800	1,810	1,920
	<b>Nov</b>	870	440	1,310	1,290		<b>Oct</b>	1,040	770	1,800	1,860
	<b>Dec</b>	800	410	1,210	1,250		<b>Nov</b>	1,060	750	1,810	1,820
<b>2011</b>	<b>Jan</b>	910	480	1,390	1,330	<b>Dec</b>	1,030	720	1,750	1,800	
	<b>Feb</b>	960	510	1,470	1,320	<b>2014</b>	<b>Jan</b>	1,090	770	1,860	1,780
	<b>Mar</b>	850	460	1,310	1,290		<b>Feb</b>	1,080	780	1,860	1,710
	<b>Apr</b>	870	490	1,350	1,390		<b>Mar</b>	980	760	1,730	1,650
	<b>May</b>	820	520	1,340	1,430		<sup>(c)</sup> <b>Apr</b>	900	720	1,610	1,600
	<b>Jun</b>	780	500	1,280	1,340		<b>May</b>	840	700	1,530	1,590
	<b>Jul</b>	800	550	1,350	1,360		<b>Jun</b>	790	710	1,510	1,580
	<b>Aug</b>	820	530	1,350	1,360		<b>Jul</b>	780	740	1,520	1,570
	<b>Sep</b>	850	520	1,370	1,410		<b>Aug</b>	780	720	1,510	1,580
	<b>Oct</b>	920	570	1,500	1,500		<b>Sep</b>	750	700	1,450	1,540
	<b>Nov</b>	960	580	1,530	1,510		<b>Oct</b>	760	670	1,430	1,480
	<b>Dec</b>	960	580	1,540	1,570		<b>Nov</b>	780	680	1,450	1,460
<b>2012</b>	<b>Jan</b>	1,050	650	1,700	1,620		<b>Dec</b>	760	680	1,440	1,460
	<b>Feb</b>	1,130	690	1,820	1,670	<b>2015</b>	<b>Jan</b>	790	700	1,490	1,380
	<b>Mar</b>	1,100	700	1,810	1,760		<sup>(c)</sup> <b>Feb</b>	870	760	1,620	1,450
	<b>Apr</b>	1,060	680	1,740	1,760		<b>Mar</b>	820	740	1,560	1,440
	<b>May</b>	1,040	680	1,720	1,800		<b>Apr</b>	710	680	1,390	1,420
	<b>Jun</b>	1,020	700	1,720	1,760		<sup>(c)</sup> <b>May</b>	730	670	1,400	1,460
	<b>Jul</b>	1,020	720	1,740	1,750		<b>Jun</b>	730	720	1,450	1,500
	<b>Aug</b>	1,020	650	1,670	1,710		<b>Jul</b>	770	720	1,490	1,510
	<b>Sep</b>	970	650	1,610	1,680		<b>Aug</b>	710	690	1,400	1,460
	<b>Oct</b>	1,020	700	1,720	1,740						
	<b>Nov</b>	1,090	730	1,820	1,820						

<sup>8</sup> Numbers are rounded independently to the nearest 10; hence, components may not sum to totals.

<sup>(c)</sup> Change in ASW Recording Criteria - see [Notes](#) for more details