

Summary

On 31 July 2016:

- on a **seasonally adjusted**¹ basis, the total number of people registered as actively seeking work (ASW) was²:
 - 90 lower than the previous month
 - 100 lower than the average for the preceding three months
 - 170 lower than a year earlier
- the **non-seasonally adjusted** ASW total was 1,330; this total is 60 lower than in the previous month and 160 lower than a year earlier
- the total number of **long-term ASW** (registered for more than twelve months) was 240; this total is 10 lower than the previous month and 50 higher than a year earlier
- there were 420 individuals registered as ASW but engaged in some form of paid employment and classified as **underemployed**; this includes 120 individuals also classified as long-term ASW

Introduction

The Social Security Department compiles data on people registered as actively seeking work (ASW) in Jersey. The Statistics Unit independently analyses this anonymised data and publishes a monthly report.

It is important to note that unemployed Jersey residents are not required to register as ASW. There are however certain requirements for those in receipt of an income support claim. Changes to the income support criteria, as well as administrative decisions within Social Security, can have an impact on the total numbers registered as ASW (see [Appendix A](#) for more details). On a more historical basis, the introduction of Income Support in 2008 led to the inclusion of a greater number of individuals in the registered figures.

The numbers shown therefore constitute an informative set of indicators demonstrating the level of individuals registered as actively seeking work in the Island at a given point in time.

The internationally comparable unemployment rate is defined by the International Labour Organisation (ILO). This includes both the registered unemployed and those not registered but still seeking work.

The ILO unemployment rate for Jersey is measured by the Annual Social Survey, the Household Spending and Income Survey and the Census. In recent years, the ILO unemployment rate for Jersey has been:

- 4.7% in March 2011, measured by the 2011 Jersey Census, corresponding to 2,570 people being unemployed and looking for work in March 2011
- 5.7% in June 2013, measured by the 2013 Jersey Annual Social Survey, corresponding to 3,200 people being unemployed and looking for work in June 2013
- 4% in the period of April 2014 to May 2015, measured by the 2014/2015 Household Spending and Income Survey, corresponding to 2,500 people being unemployed and looking for work

¹ Seasonal adjustment is a statistical technique, which enables examination of the underlying behaviour in a series of data by removing variations associated with the time of year, e.g. Christmas, Easter, academic year. See [Notes](#) for more details.

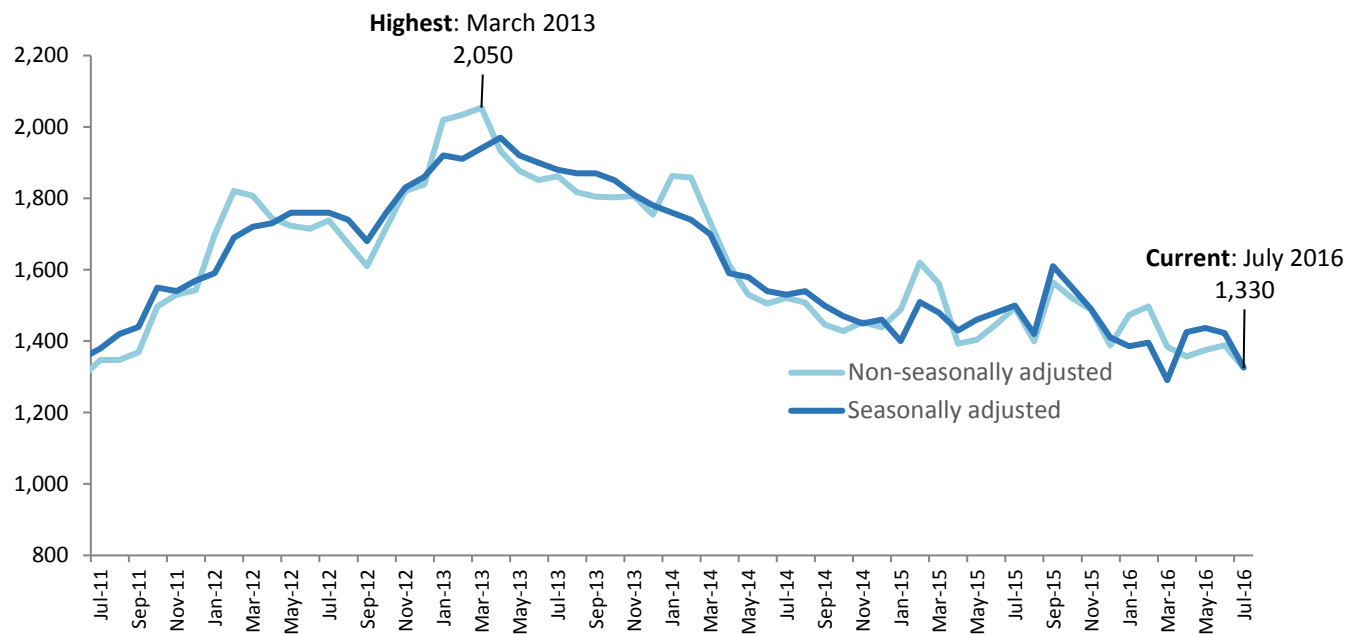
² ASW numbers presented in this report are rounded independently to the nearest 10.

Registered Actively Seeking Work

On 31 July 2016, 1,330 people were registered with the Social Security Department as actively seeking work (ASW). Four-fifths (80%) of individuals registered as ASW on this date (corresponding to 1,060 people) were receiving Income Support³.

Figure 1 shows the total number of people registered as ASW at the end of each month since July 2011 (a table of the monthly data is shown in [Appendix B](#)). The total number registered in July 2016 was 60 lower than in the previous month and 160 lower than twelve months earlier (July 2015).

Figure 1 – Total number of individuals registered as ASW, July 2011 – July 2016



The seasonally adjusted series of the total registered as ASW, in which seasonal and calendar effects are removed, is also shown on Figure 1. From this perspective, the total number of people registered as ASW in July 2016 was:

- 90 lower than the previous month, June 2016
- 100 lower than the mean for the preceding three-month period, April 2016 to June 2016
- 170 lower than a year earlier, July 2015

In respect of both the seasonally adjusted and non-seasonally adjusted ASW totals, it should be noted, when making comparisons over time, that changes to the income support criteria, as well as certain administrative changes within Social Security, can result in changes in the total number of people being considered as ASW in a particular month.

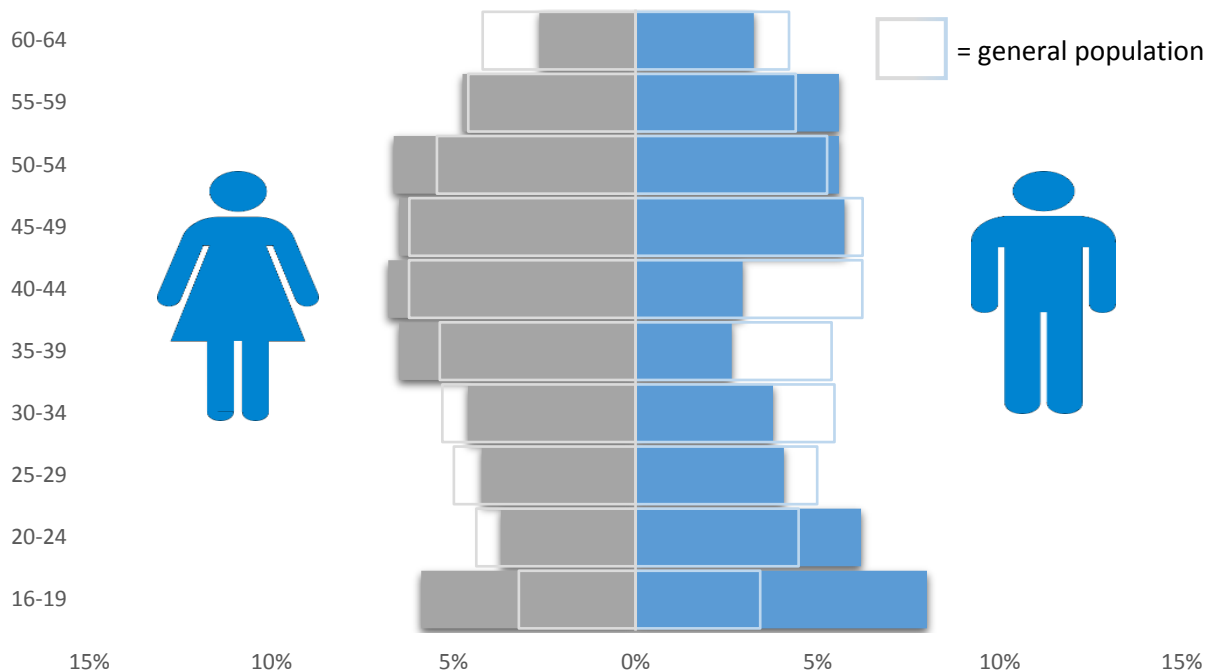
In particular, in May 2016 the threshold for the cumulative Long Term Incapacity Allowance (LTIA) percentage rate was increased from 40% to 45%. Over the next few months any individuals below this threshold, in receipt of an Income Support claim, will be required to register as ASW. This process is ongoing and the full impact of this change will be fully assessed upon completion; in the latest month (July 2016) this has resulted in an additional 10 individuals being registered as ASW (see [Appendix A](#) for more details).

³ The total number of adults receiving Income Support and not working will be greater than this figure, which represents the number of people receiving Income Support who were registered as ASW on 31 July 2016.

Registered ASW by age and gender

On 31 July 2016, more people registered as ASW were female (690 individuals), than male (630 individuals).

Figure 2 – Age and gender distribution of individuals registered as ASW compared with the proportions in the general population⁴, July 2016

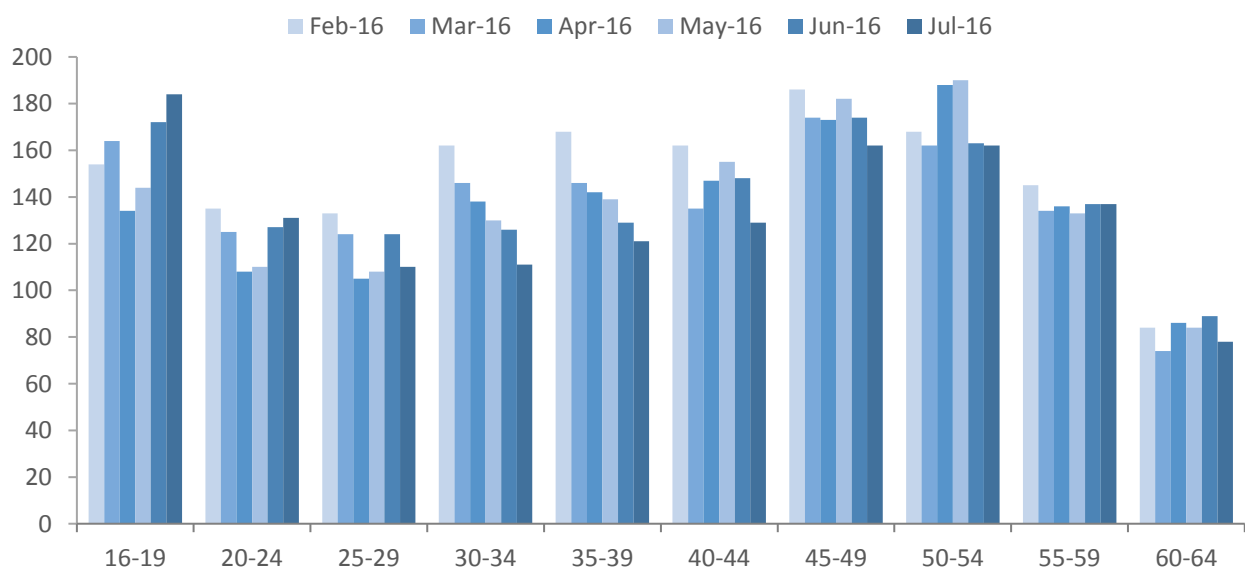


In respect of the breakdown of gender by age group:

- there were more males registered as ASW than females in both the youngest (16-24) and the oldest (55-64) age groups
- there were more females than males registered in all age groups ranging from ages 25 to 54
- the age group with the largest proportional gender difference was the 35-39 age group, where the number of females registered as ASW (90 individuals) was over double the number of males (40 individuals)

Figure 3 shows the numbers registered as ASW by age of individuals in each of the last six months, from February 2016 to July 2016.

Figure 3 – Individuals registered as ASW by age, February 2016 – July 2016



⁴ At the 2011 Jersey census

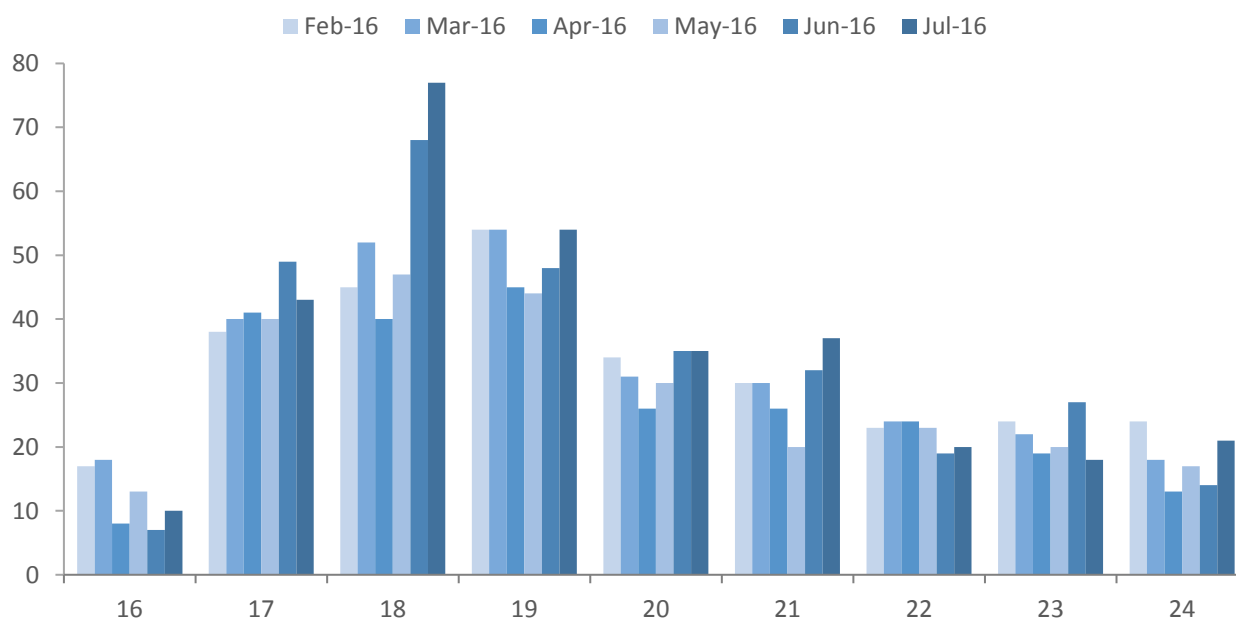
On 31 July 2016, almost a quarter (24%) of people registered as ASW were under 25 years of age (320 individuals); around one in seven (14%) of the total were teenagers, aged 16-19 years (180 individuals).

In the latest month the youngest age groups (16-19 and 20-24) were the only age groups to record small increases in the number of individuals registered as ASW. In contrast the 30-34 and 40-44 year old age groups each recorded a decrease of approximately 20 individuals registered as ASW.

All other age groups recorded small changes (10 or less) in the number registered as ASW.

Figure 4 shows the age distribution for people below 25 years of age who were registered as ASW in the latest six months, from February 2016 to July 2016. Of those people registered as ASW at the end of July 2016, 90 were on the Advance to Work scheme.

Figure 4 – Individuals under the age of 25 registered as ASW, February 2016 - July 2016

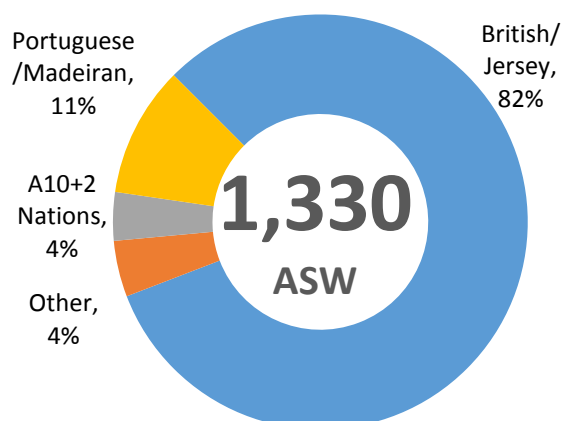


Registered ASW by nationality

On 31 July 2016:

- over four-fifths (82%) of people registered as ASW were of British / Jersey nationality⁵; there was a decrease of 40 such individuals compared with the previous month
- there were 140 individuals of Portuguese / Madeiran nationality registered as ASW (11% of total), essentially unchanged compared with the previous month
- there were 50 individuals from the EU Accession (A10+A2)⁶ nations registered as ASW, a decrease of 10 such individuals compared with the previous month

Figure 5 – Individuals registered as ASW by nationality, July 2016



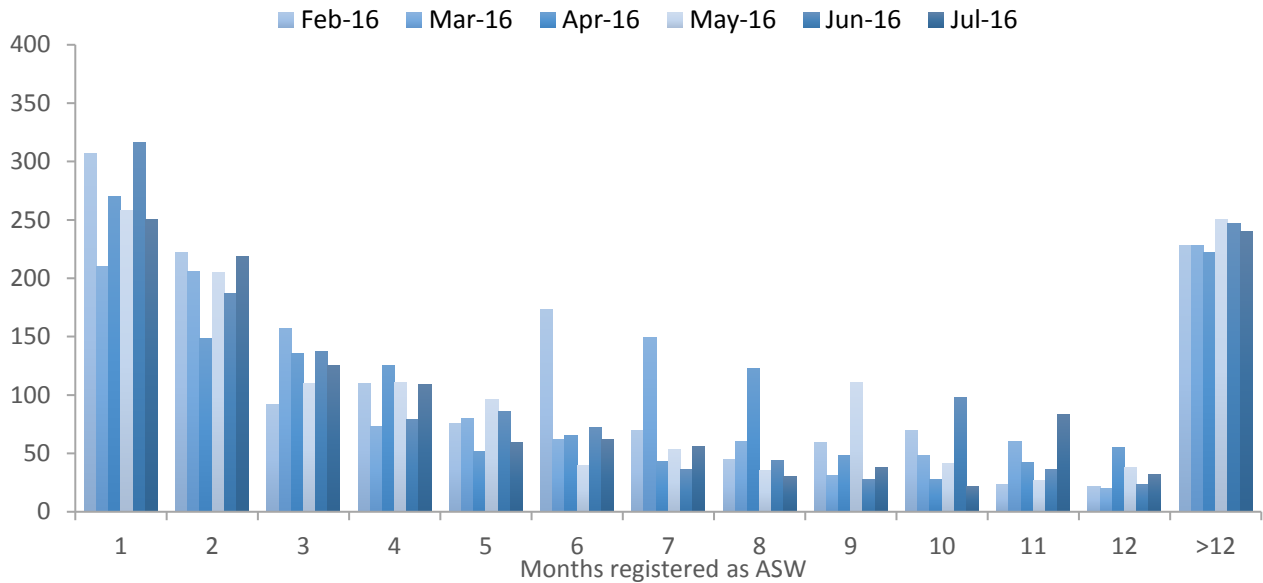
⁵ Nationality recorded by the Social Security Department, for the purpose of registering as ASW, is self-reported.

⁶ The twelve countries which joined (“gained accession to”) the European Union in May 2004 (Cyprus, the Czech Republic, Estonia, Hungary, Latvia, Lithuania, Malta, Poland, Slovakia and Slovenia) and February 2007 (Bulgaria and Romania).

Registered ASW duration

Almost half (45%) of all people registered as ASW on 31 July 2016 had been registered for three months or less - see Figure 6.

Figure 6 – Registered ASW by length of period registered (months), February 2016 - July 2016

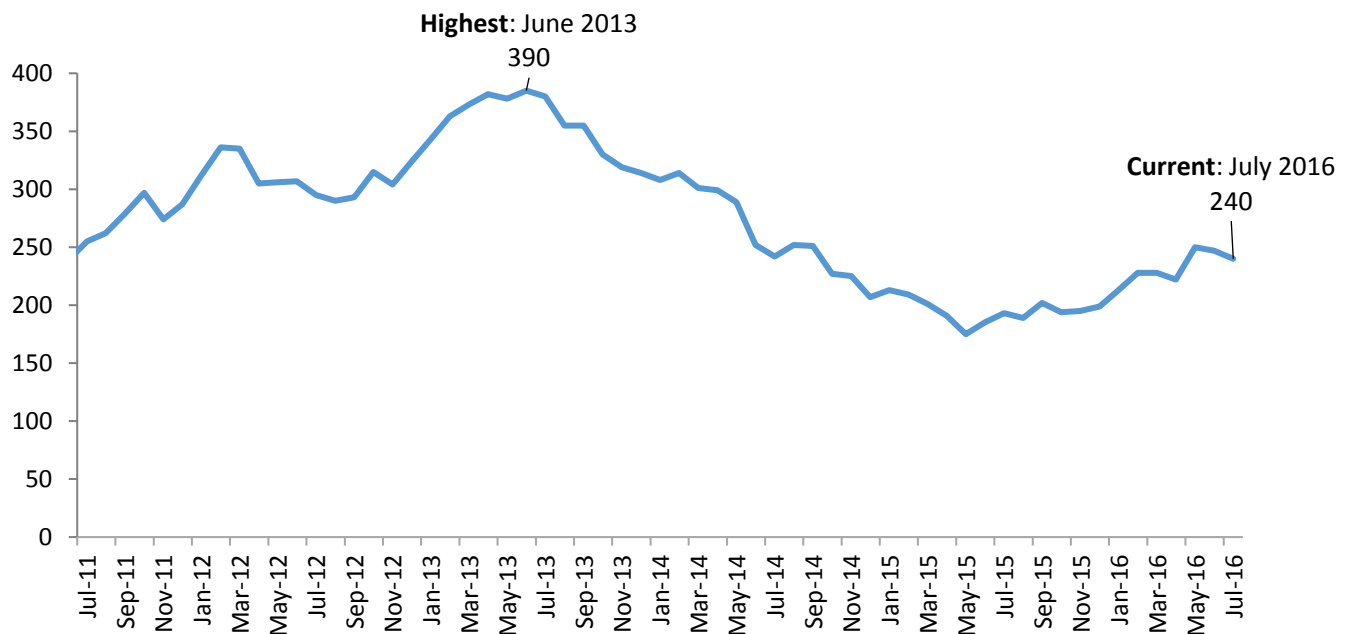


The number of new registrations in July 2016 (250 people) was 70 lower than that recorded in the previous month (June 2016) and 80 lower than a year earlier (July 2015).

Long-term Registered ASW

On 31 July 2016, there were 240 people who had been registered as ASW for more than twelve months, accounting for around one in six (18%) of the total ASW. The latest number of long-term ASW was 10 lower when compared with the previous month (June 2016) and 50 higher than twelve months earlier (July 2015).

Figure 7 – Long-term ASW, July 2011 – July 2016

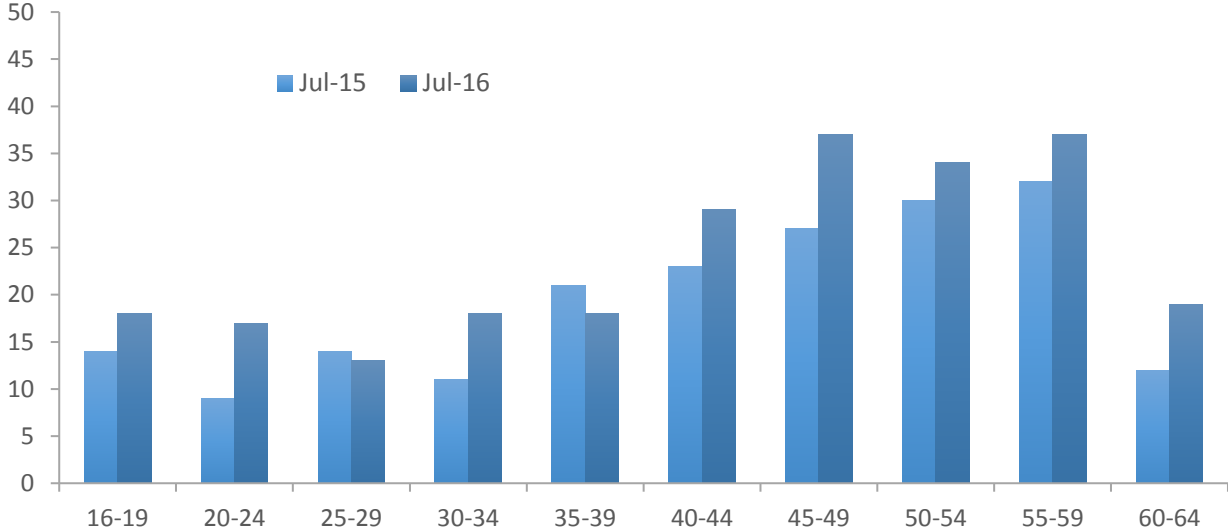


Of the 240 individuals that were registered as ASW for more than twelve months, 120 were engaged in some form of paid employment but were classified as underemployed⁷.

⁷ See [ASW registered underemployment](#) – page 7 of this report

Figure 8 shows the age distribution of the long-term ASW in July 2015 and July 2016.

Figure 8 – Long-term ASW by age, July 2015 and July 2016



In July 2016 the 45-49 age group recorded an increase of around 10 individuals registered as long-term ASW. All other age groups recorded small changes (less than 10) in the number registered as ASW compared with a year ago.

Industry

Individuals working in some industries of the economy, notably in the Finance sector, often seek employment through private agencies and do not register with the Social Security Department. Such industries will therefore tend to be under-represented in the ASW numbers.

The last industry of employment was recorded for around nine out of ten people registered as ASW. On 31 July 2016:

- over a fifth (22%) were previously employed in 'Retail and Wholesale, Motor repairs and sales'
- almost a fifth (19%) were previously employed in 'Miscellaneous professional & domestic services'
- 18% were previously employed in 'Banking, Miscellaneous Insurance, Finance and Business'

Registered ASW underemployment

Individuals who are working fewer hours than they would like or who would like to change their current working situation are classified as underemployed. The International Labour Organisation (ILO) provides two definitions of underemployment⁸:

- *time-related underemployed*, which is due to insufficient hours of work
- *inadequate employment situations*, which are due to other limitations in the labour market, which limit the capacities and well-being of workers

In Jersey, individuals who are in receipt of Income Support are required to work at least 35 hours per week, unless exempt from full-time work. Those who do not meet this requirement must register as Actively Seeking Work. The total ASW figure therefore includes individuals who are working less than the 35 hours per week required under the terms of Income Support.

The number of ASW underemployed also includes:

- individuals who are on the Foundations programme and engaged in paid work of 32 hours per week (there were 40 such individuals in July 2016)
- certain self-employed individuals who are receiving income support and are still required to pursue additional employment (there were 60 such individuals in July 2016)

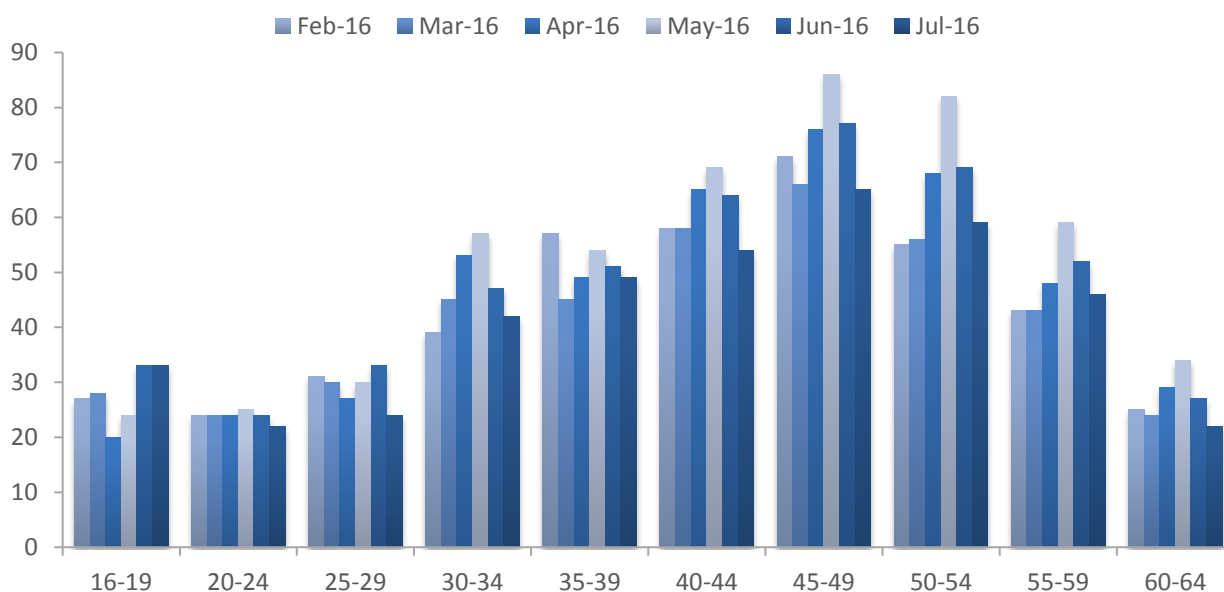
In July 2016, almost a third (32%) of all people registered as ASW were underemployed; the numbers of such individuals in each of the last twelve months are shown in Table 1.

Table 1 – Number of ASW registered underemployed, July 2015 – July 2016

	Jul 15	Aug 15	Sep 15	Oct 15	Nov 15	Dec 15	Jan 16	Feb 16	Mar 16	Apr 16	May 16	Jun 16	Jul 16
Individuals	490	460	460	460	460	410	400	430	420	460	520	480	420
Percentage of total ASW	33%	33%	29%	30%	31%	30%	27%	29%	30%	34%	38%	35%	32%

Figure 9 shows the age distribution of people registered as ASW underemployed; almost half (46%) were aged 45 years or over.

Figure 9 - Age distribution of ASW registered underemployed, February 2016 – July 2016



Of those people who were registered as ASW underemployed in July 2016: almost two-thirds (63%) were female, over a quarter (28%) had been actively seeking work for more than a year and 91% were claiming Income Support.

⁸ International Labour Organisation: *Resolution concerning the measurement of underemployment and inadequate employment situations*.

Notes

Context

The number of people registered as ASW includes people who are on the Advance to Work, Advance Plus and Work Right schemes. The ASW total will also include individuals who are working fewer than the 35 hours per week required under the terms of Income Support; such individuals will simultaneously be working and registered as actively seeking work.

When placing the figures contained in this report in a longer-term historical context it should be recognised that there have been significant changes in the criteria relating to registered ASW in Jersey in recent years. In particular, the introduction of Income Support in 2008 led to greater numbers of individuals who were actively seeking work being included in the registered figures.

People who are registered as actively seeking work receive the support of one of the government employment schemes, which come under the administration of Back to Work:

- Advance to Work – for jobseekers aged 16 - 24 years
- Advance Plus – for jobseekers aged 20 - 65 years with an industry-specific interest
- Work Right – for jobseekers with barriers to employment or who have been registered as ASW for 52 weeks or longer
- Work Zone – for registered jobseekers who are closer to employment
- Ready for Work – for newly registered jobseekers or jobseekers without a dedicated advisor

In addition to the above, some individuals registered as ASW will be assisted by the Jersey Employment Trust (JET), a registered charity whose role is to assist people with a disability to prepare, find and maintain employment. On 31 July 2016 there were 130 such individuals being assisted by JET.

As well as the development and expansion of the above schemes, Back to Work is responsible for:

- the Employment Incentive
- a dedicated Back To Work Recruitment Team
- industry and employer specific initiatives

The aim of Back to Work is to increase access to job opportunities for locally qualified people who are registered as actively seeking work by supporting jobseekers and building a partnership with employers to provide sustainable job opportunities.

Seasonal Adjustment

The Jersey employment market exhibits a number of seasonal effects that can affect the total number of people registered as actively seeking work. In order to enable meaningful month-on-month comparison, the actively seeking work totals are seasonally adjusted using the Eurostat Demetra software package.

Seasonal adjustment is based on ongoing estimation of seasonal trends and as such is subject to revision. In order to ensure a reasonably stable series of data for the user, the seasonal model is revised once a year, in January, at which point the entire historic series will potentially be revised. These revisions are welcome as they derive from an expanded set of data and lead to better estimates of the seasonal pattern. Throughout the calendar year the most recent model will be utilised and therefore the monthly figures will not be subject to revision.

All other figures presented in this report, are based on the non-seasonally adjusted measures, unless otherwise stated.

*Statistics Unit
9 August 2016*

Appendix A

Changes in ASW Recording / Income Support Criteria

Whilst there is no legal requirement for unemployed residents of Jersey to register as actively seeking work with the Social Security Department, there are certain requirements to register for those in receipt of income support payments. Changes to these requirements as well as certain administrative changes within Social Security can result in changes in the total number of people being considered as ASW. The most recent such changes are as follows:

Date of Change	Description	Approximate Impact
Ongoing - commenced May 2016	The threshold for the cumulative Long Term Incapacity Allowance (LTIA) percentage rate was increased from 40% to 45%. Over the next few months any individuals below this threshold, in receipt of an Income Support claim, will be required to register as ASW. This process is ongoing and the full impact of this change will be assessed upon completion.	TBD
September 2015	<p>Change in the Income Support criterion relating to parents with young children of school or nursery age. Prior to 1 September 2015 parents on income support, who were responsible for a child, had no job seeking requirements until the child turned 5 years of age, and therefore were not required to be registered as Actively Seeking Work.</p> <p>From 1 September 2015 parents where the youngest child on their income support claim is turning 5 years of age in the current academic year are now classified as jobseekers and are required to seek 25 hours of work per week – this resulted in approximately 80 additional individuals registered as ASW.</p> <p>In addition, parents where the youngest child on their income support claim is turning 4 years of age in the current academic year are also now classified as jobseekers and are required to seek 15 hours of work per week – this resulted in approximately 140 additional individuals registered as ASW.</p>	+ 220 registered ASW
May 2015	Change of classification for certain self-employed individuals who are seeking further employment. This administrative change involved the reclassification of 70 such individuals who are now recorded as ASW.	+ 70 registered ASW
February 2015	The threshold for the cumulative Long Term Incapacity Allowance (LTIA) percentage rate was increased from 35% to 40%. As any individuals below this threshold, in receipt of an Income Support claim, are required to register as ASW, the raising of the LTIA threshold resulted in an additional 90 individuals being registered as ASW at the end of February 2015 compared with the previous month.	+ 90 registered ASW
April 2014	April 2014 – Prior to this point, the end-of-month ASW figures published by the Statistics Unit were based on data compiled by the Social Security Department on (or around) the 15th of the following month. From the April 2014 report onwards the end-of-month figures published are based on data compiled on (or around) the 1st of the following month. Moving the data compilation date forward by two weeks introduced a small upward systematic shift (of approximately 20 individuals) in the number of people classified as ASW at each end-of-month.	+ 20 registered ASW

Appendix B

Number of individuals registered as ASW, January 2011 – July 2016⁹

		Male	Female	Total	Seasonally adjusted total			Male	Female	Total	Seasonally adjusted total
2011	Jan	910	480	1,390	1,280	2014	Dec	1,030	720	1,750	1,780
	Feb	960	510	1,470	1,330		Jan	1,090	770	1,860	1,760
	Mar	850	460	1,310	1,270		Feb	1,080	780	1,860	1,740
	Apr	870	490	1,350	1,290		Mar	980	760	1,730	1,700
	May	820	520	1,340	1,370		^(c) Apr	900	720	1,610	1,590
	Jun	790	500	1,300	1,350		May	840	700	1,530	1,580
	Jul	800	550	1,350	1,380		Jun	790	710	1,510	1,540
	Aug	820	530	1,350	1,420		Jul	780	740	1,520	1,530
	Sep	850	520	1,370	1,440		Aug	780	720	1,510	1,540
	Oct	920	570	1,500	1,550		Sep	750	700	1,450	1,500
	Nov	960	580	1,530	1,540		Oct	760	670	1,430	1,470
	Dec	960	580	1,540	1,570		Nov	780	680	1,450	1,450
2012	Jan	1,050	650	1,700	1,590	Dec	760	680	1,440	1,460	
	Feb	1,130	690	1,820	1,690	2015	Jan	790	700	1,490	1,400
	Mar	1,100	700	1,810	1,720	^(c) Feb	870	760	1,620	1,510	
	Apr	1,060	680	1,740	1,730	Mar	820	740	1,560	1,480	
	May	1,040	680	1,720	1,760	Apr	710	680	1,390	1,430	
	Jun	1,020	700	1,720	1,760	^(c) May	730	670	1,400	1,460	
	Jul	1,020	720	1,740	1,760	Jun	730	720	1,450	1,480	
	Aug	1,020	650	1,670	1,740	Jul	770	720	1,490	1,500	
	Sep	970	650	1,610	1,680	Aug	710	690	1,400	1,420	
	Oct	1,020	700	1,720	1,760	^(c) Sep	720	840	1,560	1,610	
	Nov	1,090	730	1,820	1,830	Oct	720	800	1,520	1,550	
	Dec	1,100	740	1,840	1,860	Nov	710	780	1,490	1,490	
2013	Jan	1,210	810	2,020	1,920	Dec	670	720	1,390	1,410	
	Feb	1,210	820	2,030	1,910	2016	Jan	730	740	1,470	1,390
	Mar	1,230	820	2,050	1,940	Feb	750	750	1,500	1,400	
	Apr	1,140	800	1,930	1,970	Mar	690	700	1,380	1,290	
	May	1,080	800	1,880	1,920	Apr	630	720	1,360	1,430	
	Jun	1,040	810	1,850	1,900	May	620	750	1,380	1,440	
	Jul	1,030	840	1,860	1,880	Jun	660	730	1,390	1,420	
	Aug	990	820	1,820	1,870	Jul	630	690	1,330	1,330	
	Sept	1,000	800	1,810	1,870						
	Oct	1,040	770	1,800	1,850						
	Nov	1,060	750	1,810	1,810						

⁹ Numbers are rounded independently to the nearest 10; hence, components may not sum to totals.

^(c) Change in ASW Recording / Income Support Criteria - see [Appendix A](#) for more details