

Registered Actively Seeking Work October 2013

Statistics Unit: www.gov.je/statistics

Summary

On 31 October 2013:

- on a seasonally adjusted¹ basis, the total number of people registered as actively seeking work (ASW) in Jersey was²:
 - 60 lower than a month earlier, in September 2013;
 - 40 lower than the average for the preceding three months;
- the non-seasonally adjusted ASW total was 1,800; this latest monthly total is:
 - 10 lower than a month earlier, in September 2013;
 - the lowest recorded for twelve months, since October 2012.
- **long-term registered ASW** (registered for more than twelve months) accounted for less than a fifth of total ASW and was the lowest number recorded since December 2012;
- **320 teenagers aged 16-19 years** were registered as ASW, the same as in the previous month; 150 teenagers were on the Advance to Work scheme.

Introduction

Data on people registered as actively seeking work in Jersey is compiled and administered by the Social Security Department. The Statistics Unit independently analyses this anonymised data and publishes a monthly report.

When interpreting the numbers presented, it should be kept in mind that there is no legal requirement for all unemployed residents of Jersey to register as actively seeking work (ASW) with the Social Security Department. The numbers shown constitute an informative set of indicators of the level of individuals actively seeking work in the Island at a given point in time³.

The internationally comparable unemployment rate (as defined by the International Labour Organisation, ILO) comprises people who are registered and also those who are not registered as unemployed and seeking work. The ILO unemployment rate for Jersey is measured through the Annual Social Survey and the Census. In recent years, the ILO unemployment rate for Jersey has been:

- 4.7% in March 2011, measured by the 2011 Jersey Census; this unemployment rate corresponded to 2,570 people being unemployed and looking for work in March 2011;
- 5.7% in June 2013, measured by the 2013 Jersey Annual Social Survey; this unemployment rate corresponded to 3,200 people being unemployed and looking for work in June 2013.

¹ Seasonal adjustment is a statistical technique which enables examination of the underlying behaviour in a series of data by removing variations associated with the time of year, e.g. Christmas, Easter, academic year.

² ASW numbers presented in this report are rounded independently to the nearest 10.

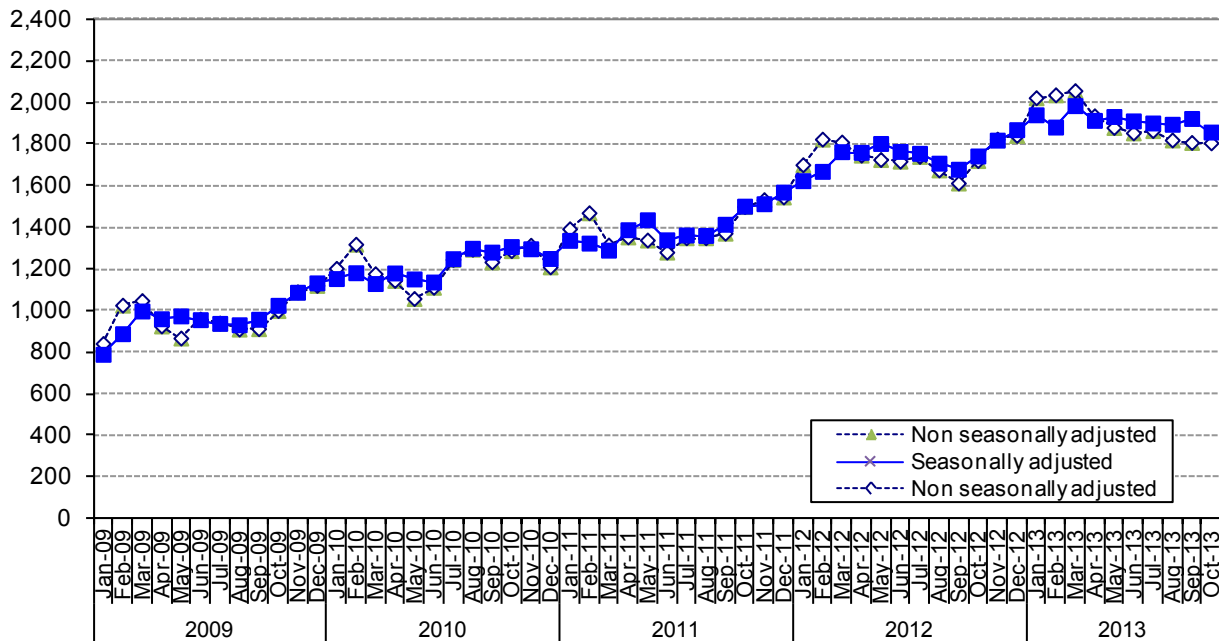
³ When placing the figures contained in this report in a historical context, it should be recognised that there have been significant changes in the criteria relating to registered ASW in Jersey in recent years. In particular, the introduction of Income Support in 2008 has led to a higher proportion of individuals who were actively seeking work being included in the registered figures.

Registered Actively Seeking Work

On 31 October 2013, 1,800 people were registered with the Social Security Department as actively seeking work (ASW). Almost three-quarters (72%) of people registered as ASW on this date (1,290 individuals) were receiving Income Support⁴.

Figure 1 shows the total number of people registered as ASW at the end of each month since January 2009 (monthly data are shown in Appendix Table A1). The total number registered in October 2013 was 10 lower than a month earlier (September 2013) and the lowest recorded for twelve months, since October 2012.

Figure 1 – Total number of individuals registered as ASW, Jan 2009 – Oct 2013



The seasonally adjusted series of the total registered as ASW, in which seasonal and calendar effects are removed, is also shown on Figure 1. From this perspective, the total number of people registered as ASW in Jersey in October 2013 was:

- 60 lower than a month earlier, in September 2013;
- 40 lower than the mean for the preceding three-month period, July to September 2013.

Registered ASW by age

On 31 October 2013, almost one in three (31%) people registered as ASW were under the age of 25 years; around one in six (18%) of the total were teenagers aged 16-19 years.

Figure 2 shows the numbers registered as ASW by age of individuals in each of the last five months, from June 2013 to October 2013.

In the latest month, 40-44 and 50-54 year olds recorded increases of around 10 in the number of people registered as ASW compared with the previous month. In contrast, most other age groups either remained essentially unchanged (with differences of less than 10) or, in the case of those aged 60-64 years, a decrease of 20 compared with the previous month.

⁴ The total number of adults receiving Income Support and not working will be greater than this figure, which represents the number of people receiving Income Support who were registered as ASW on 30 September 2013.

Figure 2 – Individuals registered as ASW by age, June 2013 – Oct 2013

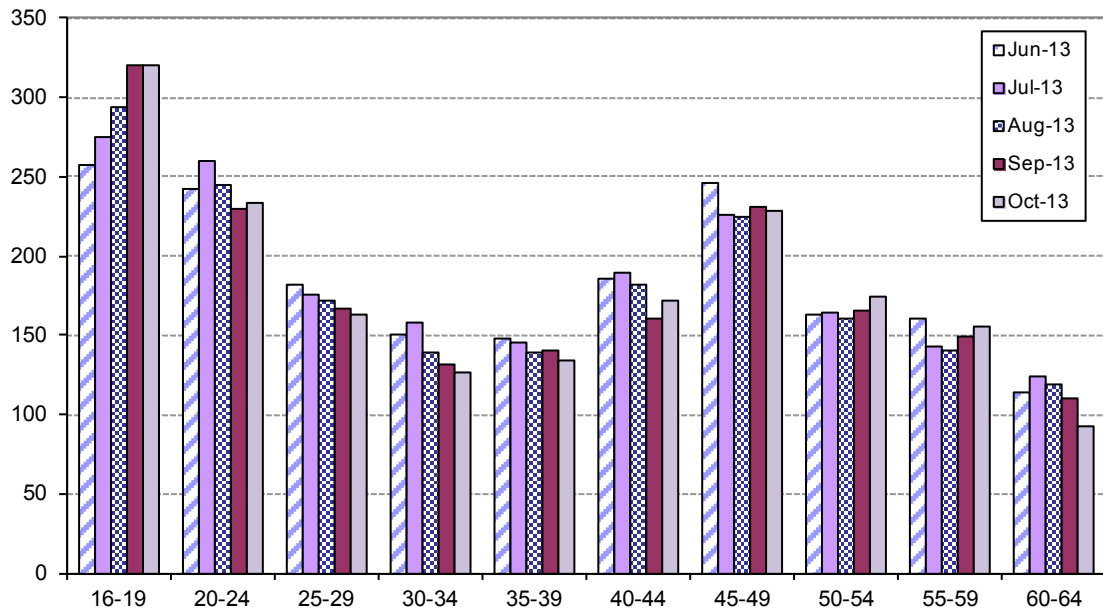
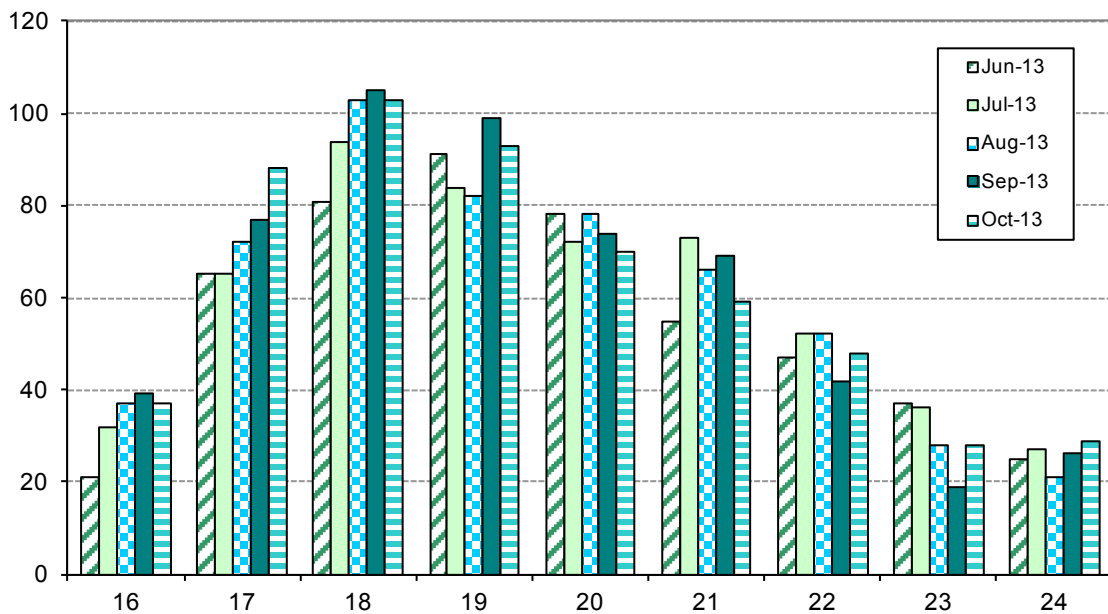


Figure 3 shows the age distribution for people under 25 years of age who were registered as ASW in the latest five months, from June 2013 to October 2013. Of the 320 teenagers (aged 16-19 years) who were registered as ASW at the end of October 2013, 150 were on the Advance to Work scheme.

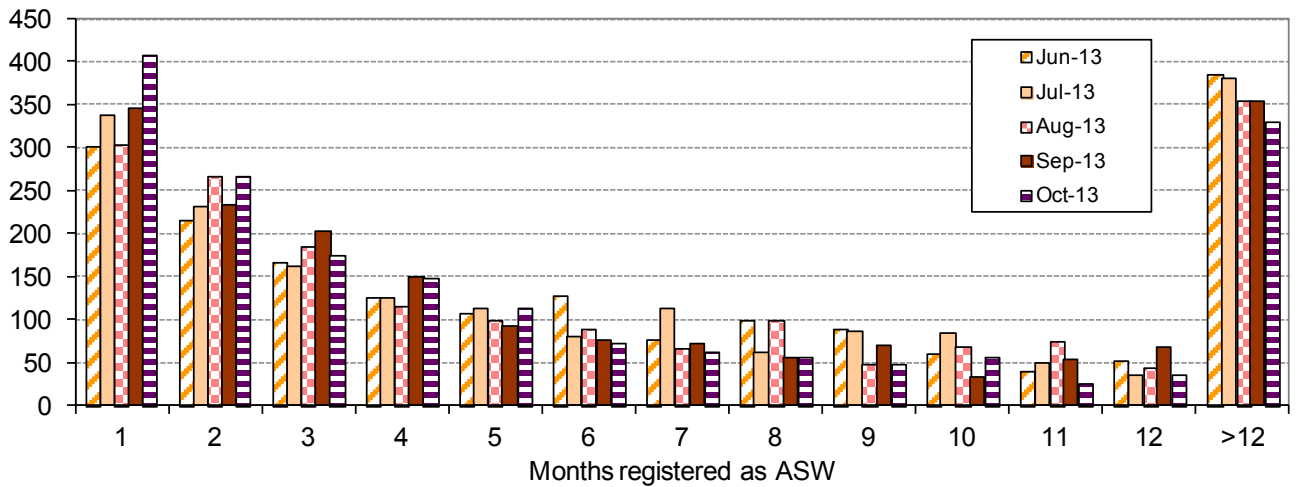
Figure 3 – Individuals under the age of 25 registered as ASW, June 2013 – Oct 2013



Duration as ASW

Almost half (47%) of all people registered as ASW on 31 October 2013 had been registered for three months or less – see Figure 4.

Figure 4 – Registered ASW by length of period registered (months), June 2013 – Oct 2013



410 people had registered as ASW in the latest month, about 60 more than in September 2013. The latest number of new registrants was 10 higher than in the corresponding month of the previous year, October 2012, and 100 more than in October 2011.

Long-term ASW

On 31 October 2013, there were 330 people who had been registered as ASW for longer than twelve months. The latest number of long-term unemployed is the lowest recorded since December 2012 (see Figure 5).

Long-term ASW accounted for less than a fifth (18%) of the latest ASW total.

Figure 5 – Long-term ASW, Apr 2009 – October 2013

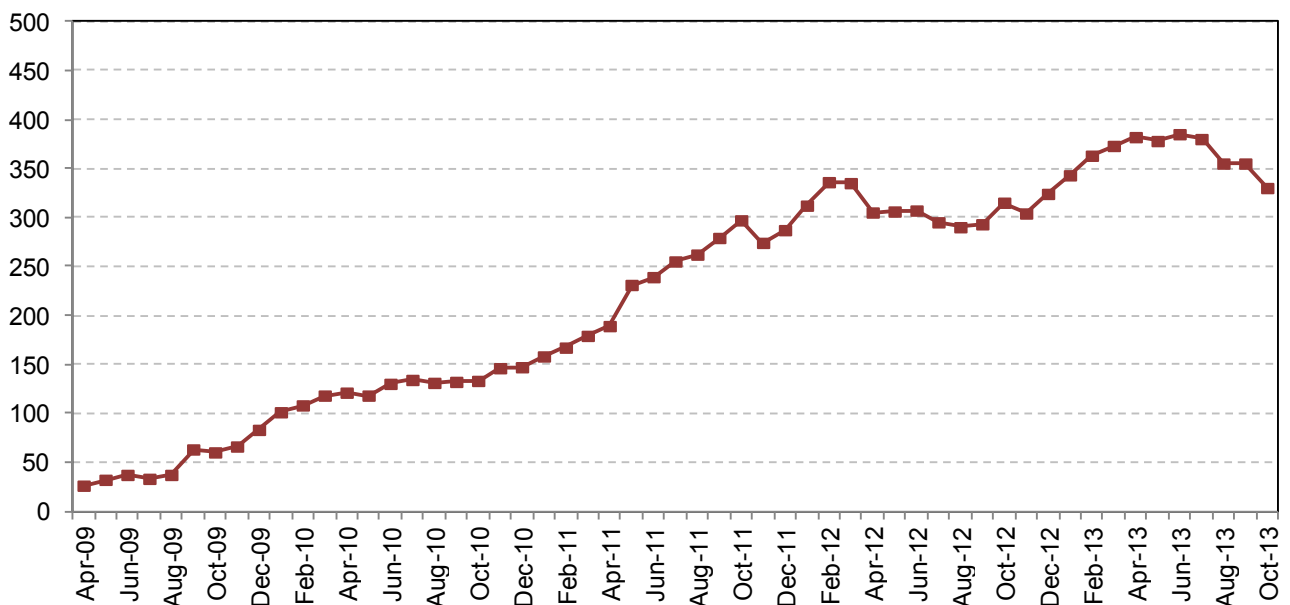
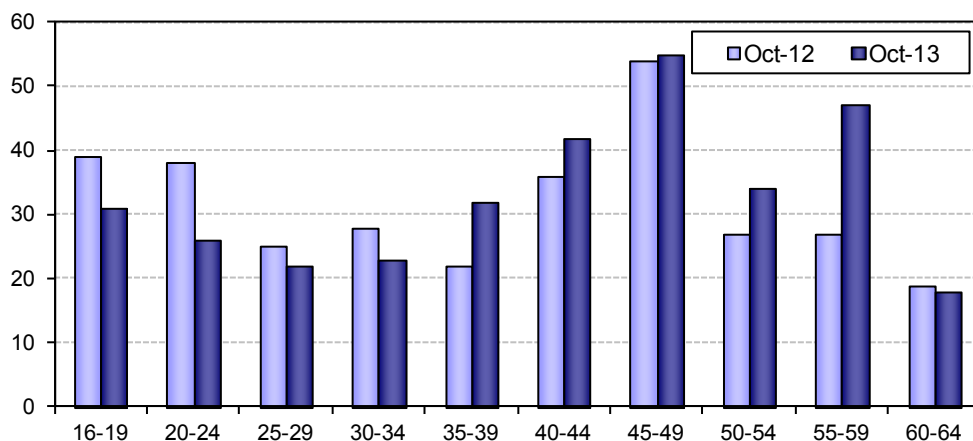


Figure 6 shows the age distribution of the long-term ASW in October 2013.

Figure 6 – Long-term ASW by age, Oct 2012 and Oct 2013

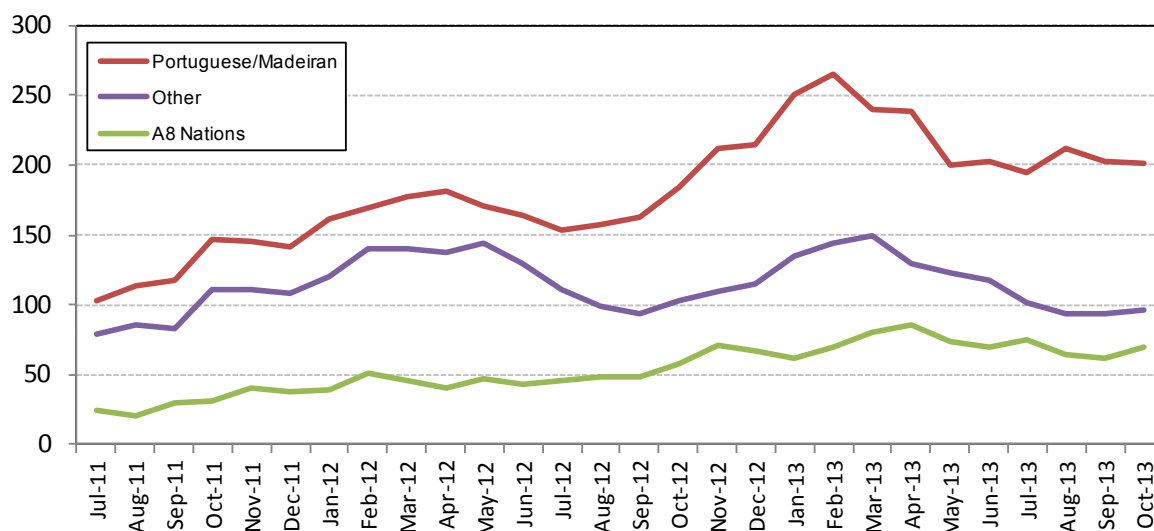


In October 2013 there were almost 60 people under 25 years of age who had been registered as ASW for more than a year, accounting for a sixth (17%) of the total long-term ASW. Over the last year, since October 2012, there has been a decrease in the number of long-term unemployed under 35 years of age but an increase in the number of long-term unemployed aged 35 or above

Registered ASW by Nationality

On 31 October 2013, four-fifths (80%) of all people registered as ASW were of British/Jersey nationality⁵, a similar proportion to that seen in each of the last four months, since July 2013. The number of individuals registered as ASW for nationalities other than British/Jersey over the last two years is shown in Figure 7.

Figure 7 – Individuals registered as ASW by nationality, July 2011 – Oct 2013



There were 200 individuals of Portuguese/Madeiran nationality registered as ASW in October 2013, a similar number to that seen in each of the last six months (since May 2013).

There were 70 individuals from the EU Accession (A8)⁶ nations who were registered as ASW in October 2013, a similar number to that seen in each of the last six months (since May 2013).

⁵ Nationality recorded by the Social Security Department for the purpose of registering as ASW is self-reported.

⁶ The eight countries which joined ("gained accession to") the European Union in May 2004 were: the Czech Republic, Estonia, Hungary, Latvia, Lithuania, Poland, Slovakia and Slovenia.

Industry

Individuals working in some industries of the economy, notably in the Finance sector, often seek employment through private agencies and do not register with the Social Security Department. Such industries will, therefore, tend to be under-represented in the ASW numbers.

The last industry of employment was recorded for almost nine out of ten people registered as ASW in October 2013:

- almost one in five were previously employed in 'Miscellaneous professional and domestic services' (19%) or in 'Retail and Wholesale, Motor repairs and sales' (18%);
- around one in nine were previously employed in 'Construction and allied trades' (11%).
- around one in seven were previously employed in 'Hotels, restaurants, pubs and clubs' (14%).

Notes

The numbers of people registered as ASW include people who are on the Advance to Work, Advance Plus and Workwise schemes. The ASW figure will also include individuals who are working less than the 35 hours a week required under the terms of Income support; such individuals will be working and actively seeking working simultaneously.

People who are registered as actively seeking work receive the support of one of the government employment schemes which come under the administration of Back to Work. They are:

- Advance to Work – for jobseekers aged 16 – 19 years;
- Advance Plus – for jobseekers with an industry-specific interest aged 20 – 65 years;
- Workwise – for jobseekers with special employment needs;
- Work Zone – for all registered jobseekers.

In addition to the development and expansion of these schemes, Back to Work is responsible for:

- the Employment Grant;
- a dedicated Employer Engagement team;
- the Long Term Unemployment Programme;
- industry and employer specific initiatives.

A new eight week initiative ('JobsFest') was also launched by Back to Work in October 2013. JobsFest included an Employer Incentive which enabled employers to hire locally qualified jobseekers who had not worked during 2013, at no financial cost to their business. This incentive will conclude on 30 November 2013, although it is hoped that a number of the roles will continue in December 2013, with funding directly from the businesses.

The aim of Back to Work is to increase access to job opportunities for locally qualified people who are registered as actively seeking work by supporting jobseekers and building a partnership with employers to provide sustainable job opportunities.

Appendix

Table A1: Number of individuals registered as ASW, Jan 2009 – Oct 2013⁷

		Male	Female	Total	Seasonally adjusted total
2009	Jan	570	270	840	790
	Feb	700	320	1,020	890
	Mar	720	330	1,050	1,000
	Apr	620	300	920	960
	May	560	300	870	970
	Jun	630	330	960	950
	Jul	620	320	940	940
	Aug	580	320	910	930
	Sep	580	330	910	960
	Oct	650	350	1,000	1,020
	Nov	700	390	1,090	1,090
	Dec	700	420	1,120	1,130
2010	Jan	770	440	1,200	1,150
	Feb	810	510	1,320	1,180
	Mar	720	450	1,170	1,130
	Apr	710	430	1,140	1,180
	May	670	390	1,060	1,150
	Jun	690	420	1,110	1,130
	Jul	760	490	1,240	1,250
	Aug	810	490	1,290	1,300
	Sep	770	460	1,230	1,280
	Oct	840	450	1,290	1,300
	Nov	870	440	1,310	1,290
	Dec	800	410	1,210	1,250
2011	Jan	910	480	1,390	1,330
	Feb	960	510	1,470	1,320
	Mar	850	460	1,310	1,290
	Apr	870	490	1,350	1,390

		Male	Female	Total	Seasonally adjusted total	
2011	May	820	520	1,340	1,430	
	Jun	780	500	1,280	1,340	
	Jul	800	550	1,350	1,360	
	Aug	820	530	1,350	1,360	
	Sep	850	520	1,370	1,410	
	Oct	920	570	1,500	1,500	
	Nov	960	580	1,530	1,510	
	Dec	960	580	1,540	1,570	
	2012	Jan	1,050	650	1,700	1,620
		Feb	1,130	690	1,820	1,670
		Mar	1,100	700	1,810	1,760
		Apr	1,060	680	1,740	1,760
May		1,040	680	1,720	1,800	
Jun		1,020	700	1,720	1,760	
Jul		1,020	720	1,740	1,750	
Aug		1,020	650	1,670	1,710	
Sep		970	650	1,610	1,680	
Oct		1,020	700	1,720	1,740	
Nov		1,090	730	1,820	1,820	
Dec		1,100	740	1,840	1,870	
2013	Jan	1,210	810	2,020	1,940	
	Feb	1,210	820	2,030	1,880	
	Mar	1,230	820	2,050	1,980	
	Apr	1,140	800	1,930	1,910	
	May	1,080	800	1,880	1,930	
	Jun	1,040	810	1,850	1,910	
	Jul	1,030	840	1,860	1,900	
	Aug	990	820	1,820	1,890	
	Sept	1,000	800	1,810	1,920	
	Oct	1,040	770	1,800	1,860	

⁷ Numbers are rounded independently to the nearest 10; hence components may not sum to totals.