


# Registered Actively Seeking Work September 2015

Statistics Unit: [www.gov.je/statistics](http://www.gov.je/statistics)

 @JsyStats

## Summary

On 30 September 2015:

- on a **seasonally adjusted**<sup>1</sup> basis, the total number of people registered as actively seeking work (ASW) was<sup>2</sup>:
  - 130 higher than the previous month
  - 110 higher than the average for the preceding three months
  - 70 higher than a year earlier
- the **non-seasonally adjusted** ASW total was 1,560; this total is 160 higher than in the previous month and 110 higher than a year earlier
- the increase in both the seasonally adjusted and non-seasonally adjusted totals was driven by a change in the Income Support criteria relating to parents with young children of school and nursery age; this resulted in approximately an additional 220 individuals being registered as ASW this month
- 54% of people registered as ASW were female (840 individuals) and 46% were male (720 individuals); this represents the first month for at least 5 years that a greater proportion of those registered as ASW were female
- 7% of the total number of ASW (100 individuals) were from the EU Accession (A10+A2) nations, an increase of 40 such individuals from the previous month and represents both the greatest total number and highest proportion recorded for at least 4 years

## Introduction

Data on people registered as actively seeking work in Jersey is compiled and administered by the Social Security Department. The Statistics Unit independently analyses this anonymised data and publishes a monthly report.

When interpreting the numbers presented, it should be noted that there is no legal requirement for unemployed residents of Jersey to register as actively seeking work (ASW) with the Social Security Department. The numbers shown constitute an informative set of indicators demonstrating the level of individuals actively seeking work in the Island at a given point in time.

The internationally comparable unemployment rate (as defined by the International Labour Organisation, ILO) includes people who are registered and also those who are not registered as unemployed and seeking work. The ILO unemployment rate for Jersey is measured by the Annual Social Survey and the Census; in recent years, the ILO unemployment rate for Jersey has been:

- 4.7% in March 2011, measured by the 2011 Jersey Census; this unemployment rate corresponded to 2,570 people being unemployed and looking for work in March 2011
- 5.7% in June 2013, measured by the 2013 Jersey Annual Social Survey; this unemployment rate corresponded to 3,200 people being unemployed and looking for work in June 2013
- 4.6% in June 2014, measured by the 2014 Jersey Annual Social Survey; this unemployment rate corresponded to 2,800 people being unemployed and looking for work in June 2014

<sup>1</sup> Seasonal adjustment is a statistical technique, which enables examination of the underlying behaviour in a series of data by removing variations associated with the time of year, e.g. Christmas, Easter, academic year.

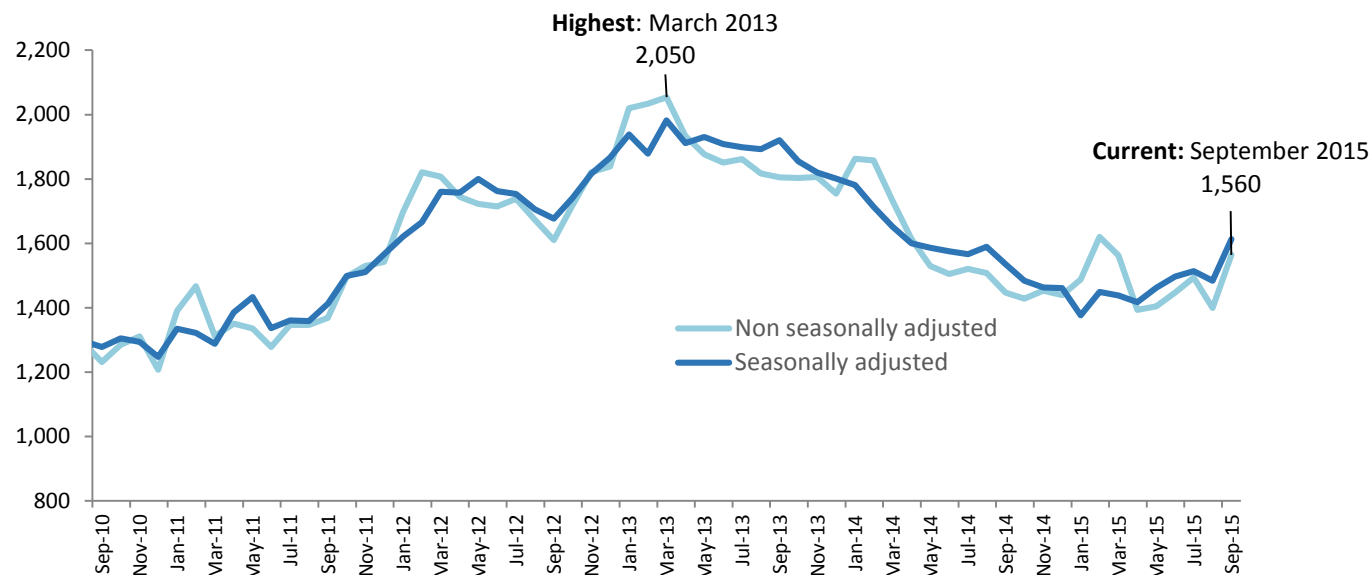
<sup>2</sup> ASW numbers presented in this report are rounded independently to the nearest 10.

## Registered Actively Seeking Work

On 30 September 2015, 1,560 people were registered with the Social Security Department as actively seeking work (ASW). Over four-fifths (81%) of individuals registered as ASW on this date (corresponding to 1,260 people) were receiving Income Support<sup>3</sup>.

Figure 1 shows the total number of people registered as ASW at the end of each month since September 2010 (a table of the monthly data is shown in [Appendix B](#)). The total number registered in September 2015 was 160 higher than in the previous month and 110 higher than twelve months earlier (September 2014).

Figure 1 – Total number of individuals registered as ASW, September 2010 – September 2015



The seasonally adjusted series of the total registered as ASW, in which seasonal and calendar effects are removed, is also shown on Figure 1. From this perspective, the total number of people registered as ASW in Jersey in September 2015 was:

- 130 higher than the previous month, August 2015
- 110 higher than the average (mean) for the preceding three-month period, June 2015 to August 2015
- 70 higher than a year earlier, September 2014

## Change in Income Support Criteria

The increase in both the seasonally adjusted and non-seasonally adjusted ASW totals this month was predominantly driven by a change in the Income Support criteria relating to parents with young children of school and nursery age.

Prior to 1 September 2015, parents on income support who were responsible for a child of school or nursery age had no job seeking requirements until the child turned 5 years of age, and therefore were not required to be registered as ASW until that point. From 1 September 2015:

- parents where the youngest child on their income support claim is turning 5 years old in the current academic year are now classified as jobseekers and are required to seek up to 25 hours of work per week; this has resulted in approximately 80 additional individuals registered as ASW in September 2015
- parents where the youngest child on their income support claim is turning 4 years old in the current academic year are now classified as jobseekers and are required to seek up to 15 hours of work per week; this has resulted in approximately 140 additional individuals registered as ASW in September 2015

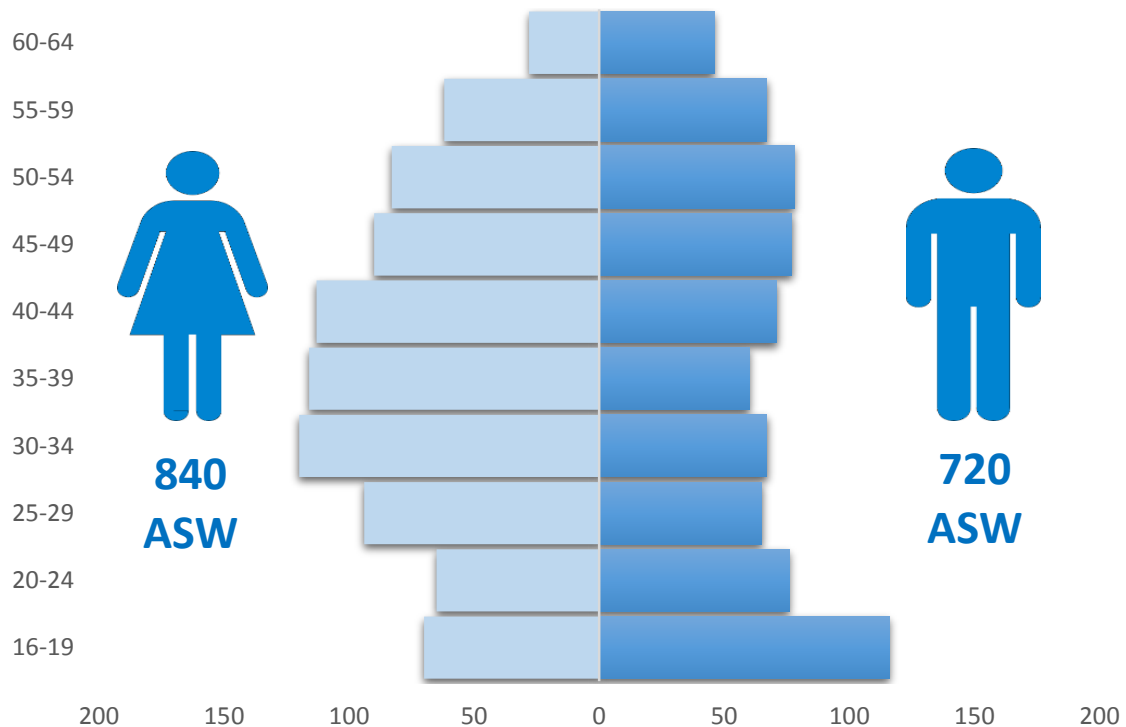
<sup>3</sup> The total number of adults receiving Income Support and not working will be greater than this figure, which represents the number of people receiving Income Support who were registered as ASW on 30 September 2015.

## Registered ASW by age and gender

On 30 September 2015, 54% of people registered as ASW were female (840 individuals), and 46% were male (720 individuals). September 2015 represents the first month for at least 5 years that a greater proportion of those registered as ASW were female.

Figure 2 shows the numbers registered as ASW both by age group and gender for this most recent month.

Figure 2 – Individuals registered as ASW by age and gender, September 2015

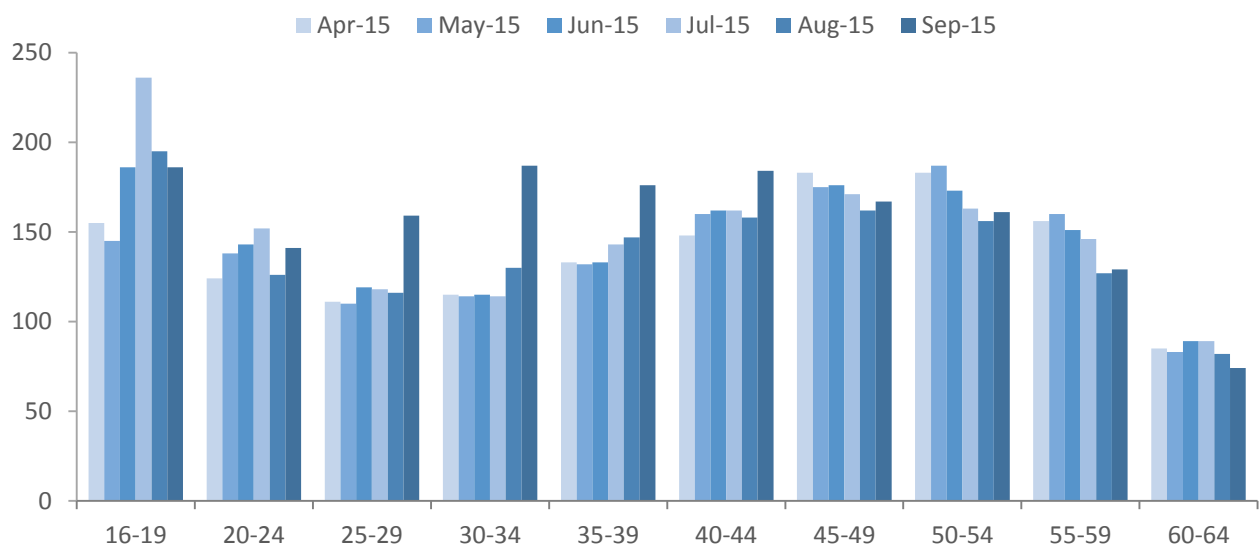


In respect of the breakdown of gender by age group:

- there were more males registered as ASW than females in both the youngest (16-24) and the oldest (55-64) age groups
- there were more females than males registered in all age groups ranging from ages 25 to 54
- the age group with the largest proportional gender difference was the 35-39 age group where the number of females registered as ASW (120 individuals) was double the number of males (60 individuals)

Figure 3 shows the numbers registered as ASW by age of individuals in each of the last six months, from April 2015 to September 2015.

Figure 3 – Individuals registered as ASW by age, April 2015 – September 2015



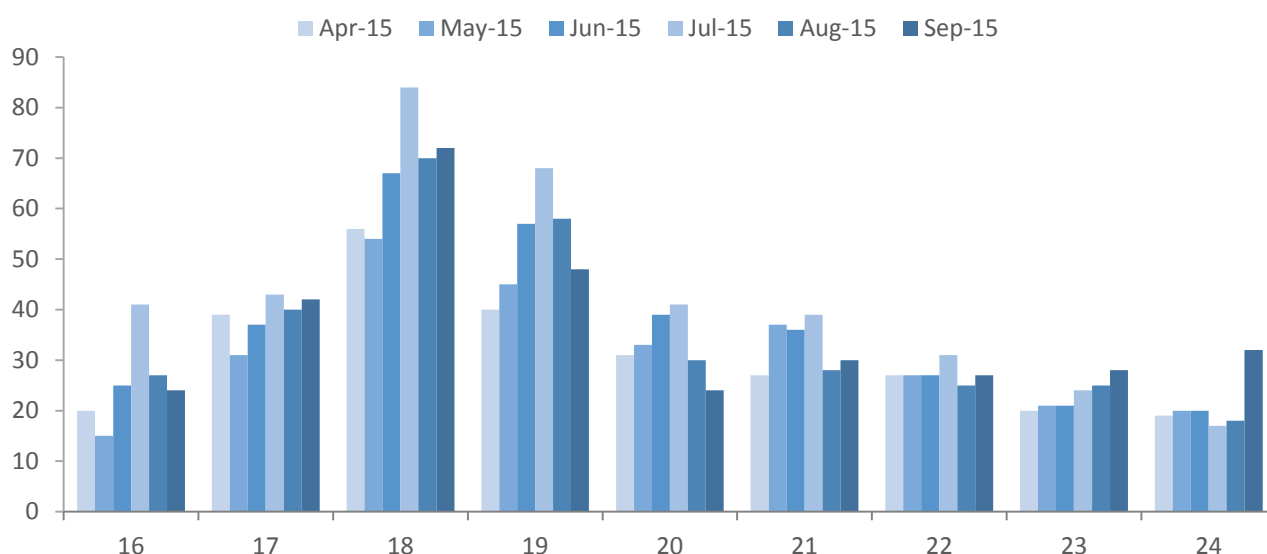
On 30 September 2015, over a fifth (21%) of people registered as ASW were under 25 years of age (330 individuals); around one in eight (12%) of the total were teenagers, aged 16-19 years (190 individuals).

In the latest month, the majority of age groups saw increases in the number of people registered as ASW compared with the previous month (August 2015). In particular:

- the 30-34 and 25-29 year old age groups recorded the highest increases in numbers registered as ASW, with 60 and 40 additional individuals registered respectively
- the 35-39 & 40-44 year old age groups both recorded increases of 30 individuals
- teenagers (16-19 years), in contrast, saw a small decrease (10 individuals) in the total number of people registered as ASW

Figure 4 shows the age distribution for people below 25 years of age who were registered as ASW in the latest six months, from April 2015 to September 2015. Of those people registered as ASW at the end of September 2015, 110 were on the Advance to Work scheme.

Figure 4 – Individuals under the age of 25 registered as ASW, April 2015 - September 2015

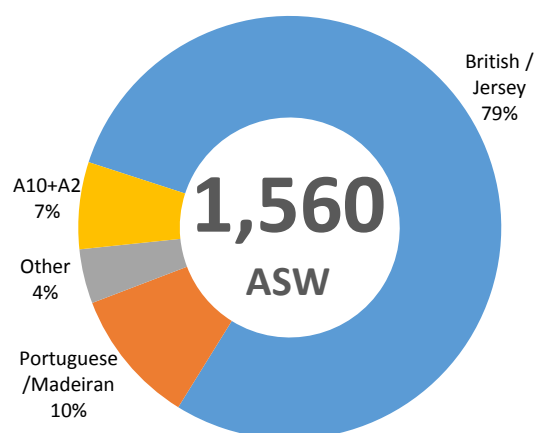


## Registered ASW by Nationality

On 30 September 2015:

- almost four-fifths (79%) of people registered as ASW were of British/Jersey nationality<sup>4</sup>; there was an increase of 80 such individuals compared with the previous month
- there were 160 individuals of Portuguese/Madeiran nationality registered as ASW (10% of total), an increase of 20 compared with August 2015 and an increase of 40 compared with September 2014
- there were 100 individuals from the EU Accession (A10+A2)<sup>5</sup> nations registered as ASW, an increase of 40 compared with both the previous month and September 2014; this represents 7% of total ASW<sup>6</sup>, and is both the greatest total number and highest proportion recorded for at least 4 years

Figure 5 – Individuals registered as ASW by nationality, September 2015



<sup>4</sup> Nationality recorded by the Social Security Department, for the purpose of registering as ASW, is self-reported.

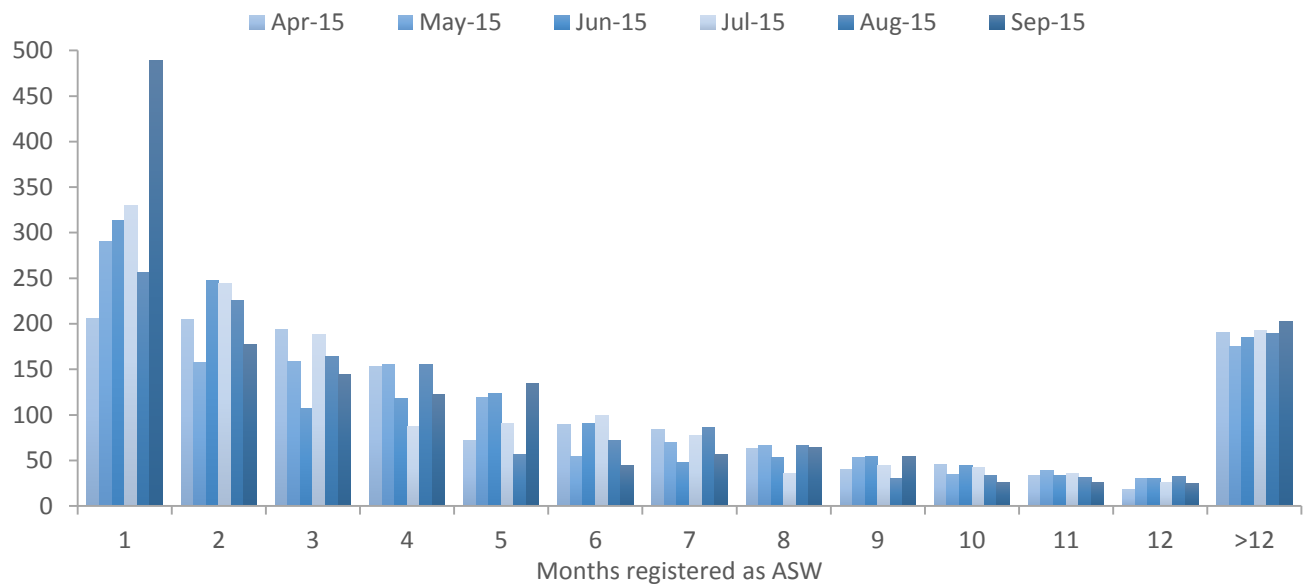
<sup>5</sup> The twelve countries which joined (“gained accession to”) the European Union in May 2004 (Cyprus, the Czech Republic, Estonia, Hungary, Latvia, Lithuania, Malta, Poland, Slovakia and Slovenia) and January 2007 (Bulgaria and Romania).

<sup>6</sup> Percentage derived from unrounded numbers

## Registered ASW duration

Over half (52%) of all people registered as ASW on 30 September 2015 had been registered for three months or less - see Figure 6.

Figure 6 – Registered ASW by length of period registered (months), April 2015 - September 2015

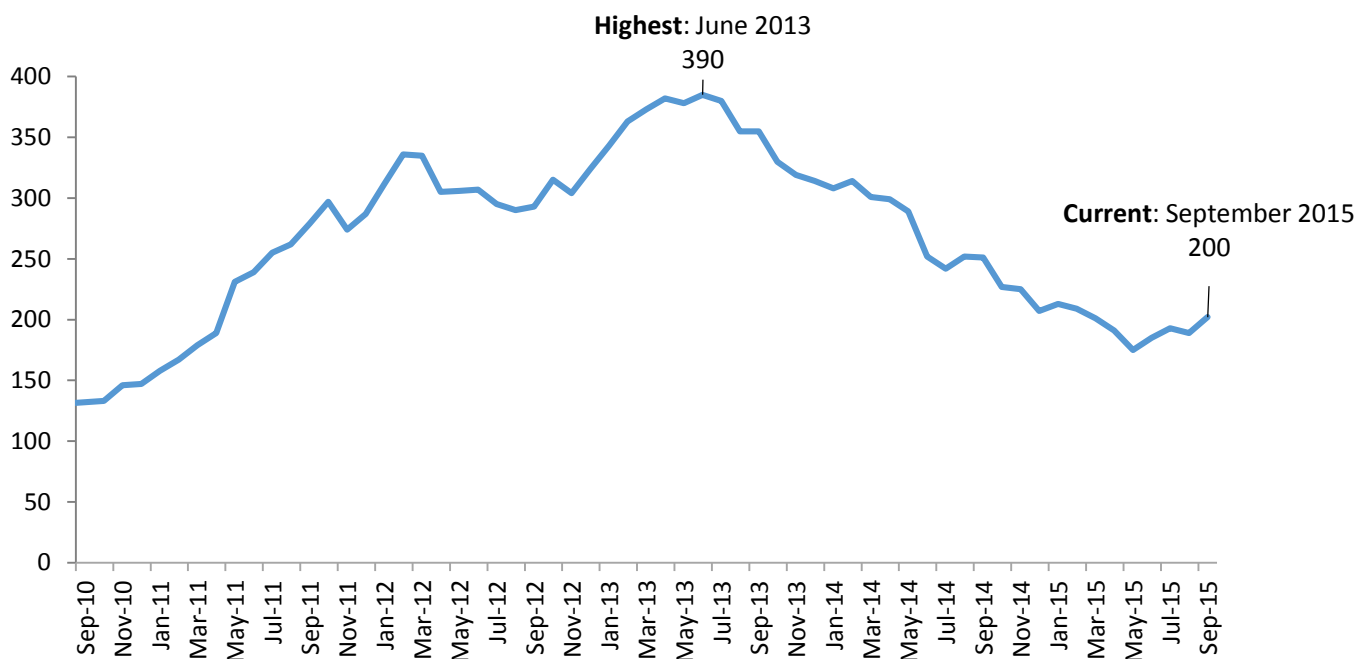


The number of new registrations in September 2015 (490 people) was 230 more than that recorded in the previous month (August 2015) and 180 more than a year earlier (September 2014). It should however be noted that the change in income support criteria, detailed above, resulted in approximately 220 additional registrations this month.

## Long-term Registered ASW

On 30 September 2015, there were 200 people who had been registered as ASW for more than twelve months, accounting for around one in eight (13%) of the total ASW. The latest number of long-term ASW was 10 higher than the previous month (August 2015) and 50 lower than twelve months earlier (September 2014).

Figure 7 – Long-term ASW, September 2010 – September 2015

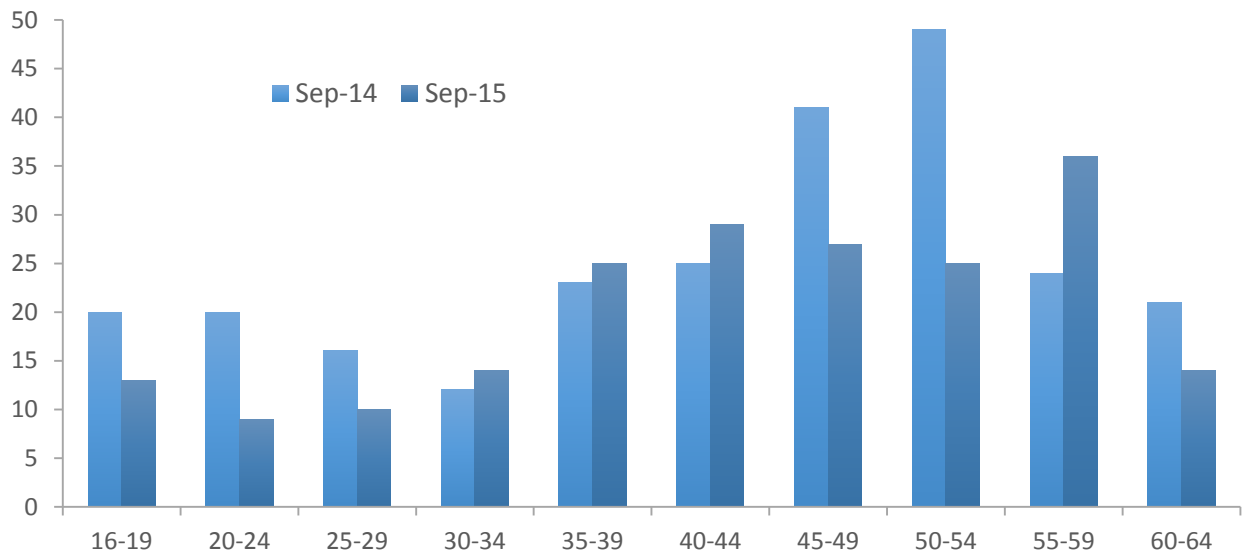


Of the 200 individuals that were registered as ASW for more than twelve months, 100 were engaged in some form of paid employment but were classified as underemployed<sup>7</sup>.

<sup>7</sup> See [ASW registered underemployment](#) – page 7 of this report

Figure 8 shows the age distribution of the long-term ASW in September 2014 and September 2015.

Figure 8 – Long-term ASW by age, September 2014 and September 2015



The 50-54 age groups recorded 20 fewer individuals than twelve months earlier, whilst the 20-24, and 45-49 age groups each recorded 10 fewer individuals registered as long term ASW. In contrast, the 55-59 age group recorded an increase of around 10 individuals.

All other age groups were essentially unchanged (changes of less than 10 individuals compared with twelve months earlier).

## Industry

Individuals working in some industries of the economy, notably in the Finance sector, often seek employment through private agencies and do not register with the Social Security Department. Such industries will therefore tend to be under-represented in the ASW numbers.

The last industry of employment was recorded for around nine out of ten people registered as ASW on 30 September 2015:

- almost a quarter (23%) were previously employed in 'Retail and Wholesale, Motor repairs and sales'
- a sixth (17%) were previously employed in 'Miscellaneous professional & domestic services'
- 15% were previously employed in 'Hotels, restaurants, pubs and clubs'
- 14% were previously employed in 'Banking, Miscellaneous Insurance, Finance and Business'

## Registered ASW underemployment

Individuals who are working fewer hours than they would like or who would like to change their current working situation are classified as underemployed. The International Labour Organisation (ILO) provides two definitions of underemployment<sup>8</sup>:

- *time related underemployed*, which is due to insufficient hours of work
- *inadequate employment situations*, which are due to other limitations in the labour market, which limit the capacities and well-being of workers

In Jersey, individuals who are in receipt of Income Support are required to work at least 35 hours per week, unless exempt from full-time work. Those who do not meet this requirement must register as Actively Seeking Work. The total ASW figure therefore includes individuals who are working less than the 35 hours per week required under the terms of Income Support. The number of ASW underemployed also includes individuals who are on the Foundations programme and engaged in paid work of 32 hours per week. In September 2015 there were 40 such individuals. Both sets of individuals will simultaneously be working and actively seeking work. They are classified as underemployed under the ILO definition of time related underemployment.

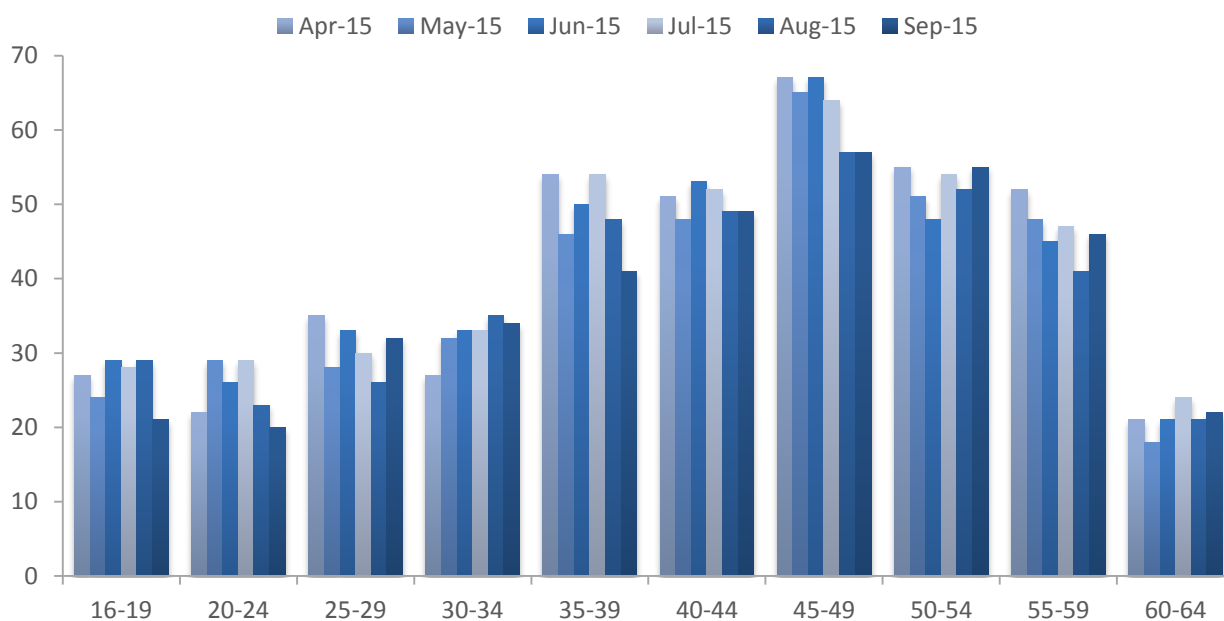
In September 2015, over a quarter (27%) of all people registered as ASW were underemployed; the numbers of such individuals in each of the last twelve months are shown in Table 1.

Table 1 – Number of ASW registered underemployed, September 2014 – September 2015

	Sep 14	Oct 14	Nov 14	Dec 14	Jan 15	Feb 15	Mar 15	Apr 15	May 15	Jun 15	Jul 15	Aug 15	Sep 15
<b>Individuals</b>	360	370	390	410	390	410	420	410	390	410	420	380	380
<b>Percentage of total ASW</b>	25%	26%	27%	28%	26%	25%	27%	29%	28%	28%	28%	27%	24%

Figure 9 shows the age distribution of people registered as ASW underemployed; nearly half (48%) were aged 45 years or over.

Figure 9 - Age distribution of ASW registered underemployed, April 2015 – September 2015



Of those people who were registered as ASW underemployed in September 2015: over three-fifths (63%) were female, over a quarter (27%) had been actively seeking work for more than a year and 92% were claiming Income Support.

<sup>8</sup> International Labour Organisation: *Resolution concerning the measurement of underemployment and inadequate employment situations*.

## Notes

The number of people registered as ASW includes people who are on the Advance to Work, Advance Plus and Work Right schemes. The ASW total will also include individuals who are working fewer than the 35 hours per week required under the terms of Income Support; such individuals will simultaneously be working and registered as actively seeking work.

When placing the figures contained in this report in a longer-term historical context it should be recognised that there have been significant changes in the criteria relating to registered ASW in Jersey in recent years. In particular, the introduction of Income Support in 2008 led to greater numbers of individuals who were actively seeking work being included in the registered figures.

People who are registered as actively seeking work receive the support of one of the government employment schemes, which come under the administration of Back to Work:

- Advance to Work – for jobseekers aged 16 - 24 years
- Advance Plus – for jobseekers aged 20 - 65 years with an industry-specific interest
- Work Right – for jobseekers with barriers to employment or who have been registered as ASW for 52 weeks or longer
- Work Zone – for registered jobseekers who are closer to employment
- Ready for Work – for newly registered jobseekers or jobseekers without a dedicated advisor

In addition to the above, some individuals registered as ASW will be assisted by the Jersey Employment Trust (JET), a registered charity whose role is to assist people with a disability to prepare, find and maintain employment. On 30 September 2015 there were 100 such individuals being assisted by JET.

As well as the development and expansion of the above schemes, Back to Work is responsible for:

- the Employment Incentive
- a dedicated Back To Work Recruitment Team
- industry and employer specific initiatives

The aim of Back to Work is to increase access to job opportunities for locally qualified people who are registered as actively seeking work by supporting jobseekers and building a partnership with employers to provide sustainable job opportunities.

*Statistics Unit  
9 October 2015*



## Appendix A

### Changes in ASW Recording / Income Support Criteria

Whilst there is no legal requirement for unemployed residents of Jersey to register as actively seeking work (ASW) with the Social Security Department, there are certain requirements to register for those in receipt of income support payments. Changes to these requirements as well as certain administrative changes within Social Security can result in changes in the total number of people being considered as ASW. The most recent such changes are as follows:

Date of Change	Description	Approximate Impact
September 2015	<p>Change in the Income Support criterion relating to parents with young children of school or nursery age. Prior to 1 September 2015 parents on income support, who were responsible for a child, had no job seeking requirements until the child turned 5 years of age, and therefore were not required to be registered as Actively Seeking Work.</p> <p>From 1 September 2015 parents where the youngest child on their income support claim is turning 5 years of age in the current academic year are now classified as jobseekers and are required to seek 25 hours of work per week – this resulted in approximately <b>80</b> additional individuals registered as ASW.</p> <p>In addition, parents where the youngest child on their income support claim is turning 4 years of age in the current academic year are also now classified as jobseekers and are required to seek 15 hours of work per week – this resulted in approximately <b>140</b> additional individuals registered as ASW.</p>	+ 220 registered ASW
May 2015	Change of classification for certain self-employed individuals who are seeking further employment. This administrative change involved the reclassification of <b>70</b> such individuals who are now recorded as ASW.	+ 70 registered ASW
February 2015	The threshold for the cumulative Long Term Incapacity Allowance (LTIA) percentage rate was increased from 35% to 40%. As any individuals below this threshold, in receipt of an Income Support claim, are required to register as ASW, the raising of the LTIA threshold resulted in an additional <b>90</b> individuals being registered as ASW at the end of February 2015 compared with the previous month.	+ 90 registered ASW
April 2014	April 2014 – Prior to this point, the end-of-month ASW figures published by the Statistics Unit were based on data compiled by the Social Security Department on (or around) the 15th of the following month. From the April 2014 report onwards the end-of-month figures published are based on data compiled on (or around) the 1st of the following month. Moving the data compilation date forward by two weeks introduced a small upward systematic shift (of approximately <b>20</b> individuals) in the number of people classified as ASW at each end-of-month.	+ 20 registered ASW

## Appendix B

Number of individuals registered as ASW, Jan 2010 – September 2015<sup>9</sup>

		Male	Female	Total	Seasonally adjusted total			Male	Female	Total	Seasonally adjusted total
<b>2010</b>	<b>Jan</b>	770	440	1,200	1,150	<b>2013</b>	<b>Dec</b>	1,100	740	1,840	1,870
	<b>Feb</b>	810	510	1,320	1,180		<b>Jan</b>	1,210	810	2,020	1,940
	<b>Mar</b>	720	450	1,170	1,130		<b>Feb</b>	1,210	820	2,030	1,880
	<b>Apr</b>	710	430	1,140	1,180		<b>Mar</b>	1,230	820	2,050	1,980
	<b>May</b>	670	390	1,060	1,150		<b>Apr</b>	1,140	800	1,930	1,910
	<b>Jun</b>	690	420	1,110	1,130		<b>May</b>	1,080	800	1,880	1,930
	<b>Jul</b>	760	490	1,240	1,250		<b>Jun</b>	1,040	810	1,850	1,910
	<b>Aug</b>	810	490	1,290	1,300		<b>Jul</b>	1,030	840	1,860	1,900
	<b>Sep</b>	770	460	1,230	1,280		<b>Aug</b>	990	820	1,820	1,890
	<b>Oct</b>	840	450	1,290	1,300		<b>Sept</b>	1,000	800	1,810	1,920
	<b>Nov</b>	870	440	1,310	1,290		<b>Oct</b>	1,040	770	1,800	1,860
	<b>Dec</b>	800	410	1,210	1,250		<b>Nov</b>	1,060	750	1,810	1,820
<b>2011</b>	<b>Jan</b>	910	480	1,390	1,330	<b>Dec</b>	1,030	720	1,750	1,800	
	<b>Feb</b>	960	510	1,470	1,320	<b>2014</b>	<b>Jan</b>	1,090	770	1,860	1,780
	<b>Mar</b>	850	460	1,310	1,290		<b>Feb</b>	1,080	780	1,860	1,710
	<b>Apr</b>	870	490	1,350	1,390		<b>Mar</b>	980	760	1,730	1,650
	<b>May</b>	820	520	1,340	1,430		<sup>(c)</sup> <b>Apr</b>	900	720	1,610	1,600
	<b>Jun</b>	780	500	1,280	1,340		<b>May</b>	840	700	1,530	1,590
	<b>Jul</b>	800	550	1,350	1,360		<b>Jun</b>	790	710	1,510	1,580
	<b>Aug</b>	820	530	1,350	1,360		<b>Jul</b>	780	740	1,520	1,570
	<b>Sep</b>	850	520	1,370	1,410		<b>Aug</b>	780	720	1,510	1,580
	<b>Oct</b>	920	570	1,500	1,500		<b>Sep</b>	750	700	1,450	1,540
	<b>Nov</b>	960	580	1,530	1,510		<b>Oct</b>	760	670	1,430	1,480
	<b>Dec</b>	960	580	1,540	1,570		<b>Nov</b>	780	680	1,450	1,460
<b>2012</b>	<b>Jan</b>	1,050	650	1,700	1,620		<b>Dec</b>	760	680	1,440	1,460
	<b>Feb</b>	1,130	690	1,820	1,670	<b>2015</b>	<b>Jan</b>	790	700	1,490	1,380
	<b>Mar</b>	1,100	700	1,810	1,760		<sup>(c)</sup> <b>Feb</b>	870	760	1,620	1,450
	<b>Apr</b>	1,060	680	1,740	1,760		<b>Mar</b>	820	740	1,560	1,440
	<b>May</b>	1,040	680	1,720	1,800		<b>Apr</b>	710	680	1,390	1,420
	<b>Jun</b>	1,020	700	1,720	1,760		<sup>(c)</sup> <b>May</b>	730	670	1,400	1,460
	<b>Jul</b>	1,020	720	1,740	1,750		<b>Jun</b>	730	720	1,450	1,500
	<b>Aug</b>	1,020	650	1,670	1,710		<b>Jul</b>	770	720	1,490	1,510
	<b>Sep</b>	970	650	1,610	1,680		<b>Aug</b>	710	690	1,400	<sup>(r)</sup> 1,480
	<b>Oct</b>	1,020	700	1,720	1,740		<sup>(c)</sup> <b>Sep</b>	720	840	1,560	1,610
	<b>Nov</b>	1,090	730	1,820	1,820						

<sup>9</sup> Numbers are rounded independently to the nearest 10; hence, components may not sum to totals.

<sup>(c)</sup> Change in ASW Recording / Income Support Criteria - see [Appendix A](#) for more details <sup>(r)</sup> revised