



# How to use the Annual Report and Accounts

## Structure of the Annual Report and Accounts

The Annual Report and Accounts is made up of the following Parts:

**Part 1: Performance Report** – sets out a summary of the financial performance of the States of Jersey Group and the performance of the Government of Jersey.

**Appendix 1: Financial Review** – sets out detailed information on the financial performance of the States of Jersey Group.

**Appendix 2: Sustainability Report** – sets out detailed information on the sustainability work of the States of Jersey Group.

**Part 2: Accountability Report** – sets out information on the composition and organisation of the States of Jersey Group and its governance structures, and how they support the achievement of the States' strategic objectives. It also includes the Remuneration and Staff Report and a breakdown of actual spend against the budgets approved by the States Assembly in the Government Plan.

**Part 3: Financial Statements** – are the audited statutory financial statements for the States of Jersey Group. The accompanying notes in Part 4 provide further breakdowns and explanation of the income, expenditure and asset and liabilities reported in the financial statements.

### **Part 4: Notes to the Accounts**

Further and more detailed information can also be found at the separate document:

**Annex: Government Department Annual Reports** – sets out the detailed information on the performance of the Government Departments.

## 2022 Election

The election of a new States Assembly took place in June 2022 and the new Council of Ministers was appointed on 11 July 2022.

This Annual Report and Accounts therefore covers approximately the final six months of the previous Council of Ministers (Chief Minister Senator Le Fondré) and six months of the new Council of Ministers (Chief Minister Deputy Moore) which was appointed on 11 July 2022.

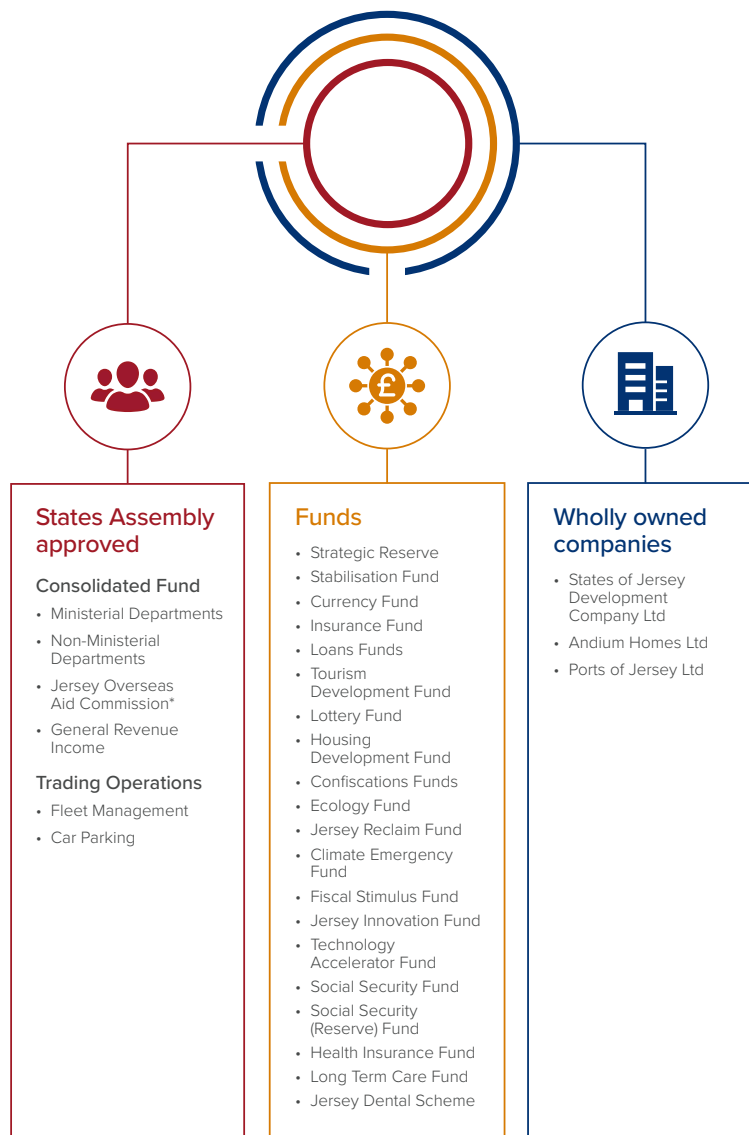
In advance of the election, from 10 May until 11 July 2022, the Government of Jersey was subject to the [pre-election period](#) where government activity is conducted under specific rules which protect impartiality and mitigate against political advantage.

## New Chief Executive Officer

Interim Chief Executive Officer, Paul Martin left at the end of his 12-month fixed term contract and on 1 February 2022, Suzanne Wylie took office as Chief Executive Officer and Head of the Public Service. The CEO's role is principal advisor to the Council of Ministers and she is accountable for the administration and general management of the public services and implementation of corporate and strategic priorities. As Principal Accounting Officer, she must also ensure the probity and regularity of the finances and that resources are used economically, efficiently and effectively.

## Scope of the Annual Report and Accounts - The States of Jersey Group and the Accounting Boundary

The requirements for the Annual Report and Accounts are set by the [Jersey Financial Reporting Manual \(JFReM\)](#), the technical accounting guide to the preparation of the financial statements for the States of Jersey Group.



The Annual Report and Accounts contains a wide variety of information on the performance and finances of the entities within the States of Jersey Group.

The majority of the entities within the States of Jersey Group, as set out below, fall within the Accounting Boundary as defined in the JFReM which is based on direct control of the entities as evidenced by the Government, Council of Ministers or a Minister exercising in-year control over operating practices, income, expenditure, assets of liabilities of the entity. The accounts presented in this report include all the entities shown as within the Accounting Boundary in the table below.

## Entities consolidated within the States of Jersey Group accounting boundary

| Government Departments  | Non-Ministerial Bodies  |
|---|---|
| Chief Operating Office  | Bailiff's Chambers  |
| Children, Young People, Education and Skills  | Judicial Greffe   |
| Customer and Local Services   | Law Officers' Department  |
| Department for the Economy  | Office of the Comptroller and Auditor General                       |
| Health and Community Services   | Office of the Lieutenant Governor                                   |
| Infrastructure, Housing and Environment   | Official Analyst  |
| Justice and Home Affairs  | Probation Department  |
| Office of the Chief Executive   | Viscount's Department   |
| Strategic Policy, Planning and Performance  |   |
| Treasury and Exchequer  |   |
| The States Assembly and its Services  | Other   |
| Assemblée Parlementaire de la Francophonie - Jersey Branch  | Jersey Overseas Aid   |
| Commonwealth Parliamentary Association - Jersey Branch  |   |
| States Funds  |   |
| Dwelling Houses Loan Fund   | Stabilisation Fund  |
| Assisted House Purchase Scheme  | Currency Fund (comprising Jersey Currency Notes and Jersey Coinage) |
| 99 Year Leaseholders Fund   | Insurance Fund  |
| Agricultural Loans Fund   | Jersey Reclaim Fund   |
| Tourism Development Fund  | Climate Emergency Fund  |
| Channel Islands Lottery (Jersey) Fund   | Fiscal Stimulus Fund  |
| Jersey Innovation Fund  | Ecology Fund  |
| Housing Development Fund  | Fishfarmer Loan Scheme (Dormant)                                    |
| Criminal Offences Confiscation Fund   |   |
| Civil Asset Recovery Fund   | Trading Operations  |
| Technology Accelerator Fund   | Jersey Car Parking  |
| Strategic Reserve   | Jersey Fleet Management   |
| Social Security Funds   |   |
| Health Insurance Fund   |   |
| Social Security Fund  |   |
| Social Security (Reserve) Fund  |   |
| Long-Term Care Fund   |   |
| Jersey Dental Scheme  |   |
| Consolidated Subsidiary Companies   |   |
| For further information in regards to the accounting principles behind recognition of these entities are detailed in the accounting policy. |   |
| States of Jersey Development Company (and its subsidiaries)   |   |
| Andium Homes Limited (and its subsidiaries)   |   |
| Ports of Jersey Limited (and its subsidiaries)  |   |
| Strategic Investments (not consolidated however elected to be held at Fair Value through other Comprehensive Income)                        |   |
| For further information in regards to the accounting principles behind recognition of these entities are detailed in the accounting policy. |   |
| Jersey Electricity PLC  |   |
| JT Group Limited  |   |
| Jersey Waterworks Company Limited   |   |
| Jersey Post International Limited   |   |

Core Entities

States of Jersey Group

## Minor Entities not consolidated but within the accounting boundary

There are a number of smaller entities which fall within the accounting boundary of the States of Jersey Group but which are not consolidated as they are immaterial to the financial statements as a whole. These are referred to as "Minor Entities" and comprise:

|                                    |                                 |
|------------------------------------|---------------------------------|
| Government of Jersey London Office | Jersey Sport Limited            |
| Digital Jersey Limited             | Jersey Legal Information Board  |
| Jersey Business limited            | Bureau des Iles Anglo-Normandes |
| Jersey Finance Limited             | Channel Islands Brussels Office |
| Visit Jersey Limited               |                                 |

The States of Jersey Group comprises, similar to other national governmental structures, a large, complex and diverse group of entities.

It is therefore worth highlighting that these entities provide a very broad array of public services and vary widely in size, scope, budget, roles, and responsibilities. Each entity also has its own constitutional and/or legal identity, inter-relationships, governance and accountability arrangements.

This constitutional and structural complexity, together with the breadth of public services provided, presents a challenge when compiling an Annual Report and Accounts that is understandable, meaningful and proportionate in terms of scope, length and detail.

So, in order to help make further sense of this complexity:

- Many matters within the Annual Report and Accounts are the responsibility of the Government of Jersey. Where that is the case reference is made to 'Government of Jersey'. The '[Government of Jersey](#)' refers to the Ministers and the Ministerial Departments.
- Where this publication also covers the wider States of Jersey Group, or other entities or groups within the States of Jersey Group, references are made to the States of Jersey Group, and group of entities within the States of Jersey Group or the entity itself.
- Many of the States of Jersey Group entities publish their own individual Annual Reports. Links to States of Jersey Group entities and other organisations and bodies can be found [here](#).

## Abbreviations used in Annual Report and Accounts

### Minister

|        |   |
|--------|---|
| CM     | Chief Minister  |
| MHC    | Minister for Housing and Communities                          |
| MEDTSC | Minister for Economic Development, Tourism, Sport and Culture |
| MCEDU  | Minister for Children and Education                           |
| MENV   | Minister for the Environment                                  |
| MER    | Minister for External Relations                               |
| MHA    | Minister for Home Affairs                                     |
| MHSS   | Minister for Health and Social Services                       |
| MID    | Minister for International Development                        |
| MINF   | Minister for Infrastructure                                   |
| MSS    | Minister for Social Security                                  |
| MTR    | Minister for Treasury and Resources                           |

### Department

|       |  |
|-------|--|
| CLS   | Customer and Local Services                  |
| COO   | Chief Operating Office                       |
| CYPES | Children, Young People, Education and Skills |
| ECON  | Economy                                      |
| ER    | External Relations                           |
| HCS   | Health and Community Services                |
| IHE   | Infrastructure, Housing and Environment      |
| JHA   | Justice and Home Affairs                     |
| OCE   | Office of the Chief Executive                |
| SPPP  | Strategic Policy, Planning and Performance   |
| T&E   | Treasury and Exchequer                       |