



Ricardo  
Energy & Environment



## Air Quality monitoring in Jersey 2016

---

Report for the States of Jersey  
ED62170 2016 report

**Customer:****States of Jersey****Customer reference:**

ED62170 2016

**Confidentiality, copyright & reproduction:**

This report is the Copyright of the States of Jersey. It has been prepared by Ricardo Energy & Environment, a trading name of Ricardo-AEA Ltd, under contract to the States of Jersey dated 28/01/2016. The contents of this report may not be reproduced in whole or in part, nor passed to any organisation or person without the specific prior written permission of the States of Jersey. Ricardo Energy & Environment accepts no liability whatsoever to any third party for any loss or damage arising from any interpretation or use of the information contained in this report, or reliance on any views expressed therein.

**Contact:**

Ben Davies  
Ricardo Energy & Environment  
Gemini Building, Harwell, Didcot, OX11 0QR,  
United Kingdom

**t:** +44 (0) 1235 75 3069**e:** Ben.Davies@ricardo.com

Ricardo-AEA Ltd is certificated to ISO9001 and ISO14001

**Author:**

Sion Carpenter and Ben Davies

**Approved By:**

Ben Davies

**Date:**

12 June 2017

**Ricardo Energy & Environment reference:**

Ref: ED62170- Issue 1

---

## Executive summary

This report presents the results for 2016 of an ongoing programme of air quality monitoring in Jersey, carried out by Ricardo Energy & Environment on behalf of the Department of the Environment of the States of Jersey.

An automatic monitoring station for nitrogen dioxide (NO<sub>2</sub>) has been located in the Central Market, Halkett Place, St Helier since January 2008. In addition, non-automatic diffusion tube samplers were used for indicative monitoring of nitrogen dioxide (NO<sub>2</sub>) at 21 sites, and a suite of four hydrocarbons (benzene, toluene, ethylbenzene and xylenes) at a further five sites. Hydrocarbon monitoring sites included areas likely to be affected by specific emission sources (such as a petrol station and a paint-spraying process), as well as general background locations. The 2016 non-automatic monitoring programme continued a long-term survey that has operated in Jersey since 1997.

NO<sub>2</sub> and hydrocarbon diffusion tubes were exposed for twelve periods approximating to calendar months. The tubes were supplied and analysed by Gradko International Ltd, and changed by Technical Officers of Jersey's Department of the Environment.

The automatic monitoring site at Halkett Place met the EC Directive limit value (and AQS objective) for both the 1-hour mean NO<sub>2</sub> concentration and the annual mean NO<sub>2</sub> concentration.

After the application of a diffusion tube bias adjustment factor, annual mean concentrations of NO<sub>2</sub> did not exceed the EC Directive limit value at any of the 21 sites.

The diurnal pattern in concentrations of oxides of nitrogen at Halkett Place was similar to that observed in previous years. There was a clear peak in the early morning between 07:00 and 08:00, with another slight peak in the afternoon rush-hour. The morning peak is thought to reflect early activity of market retailers arriving to set-up for the day and of daily refuse collections.

Only four hydrocarbon monitoring sites could provide an annual mean due to data loss at Hansford Place. Each of these were below the annual mean of the EC Directive limit value for benzene (5 µg m<sup>-3</sup> as an annual mean, to be achieved by 2010<sup>4</sup>). The site at Faux Bie Terrace measured the highest annual mean benzene concentration, of 1.9 µg m<sup>-3</sup>. Faux Bie Terrace represents the nearest relevant public exposure to a petrol station.

Overall hydrocarbon concentrations at Le Bas Centre, the Airport Fence and Faux Bie sites showed no increase compared with 2015, while most hydrocarbon concentrations at Halkett Place have slightly decreased (the exception being ethylbenzene). Over the long term, hydrocarbon concentrations have generally decreased at La Bas Centre, Halkett Place and Hansford Lane. However, at the Faux Bie site they have started to increase in recent years.

# Table of contents

|          |   |           |
|----------|---|-----------|
| <b>1</b> | <b>Introduction</b> .....   | <b>1</b>  |
| 1.1      | Background .....  | 1         |
| 1.2      | Objectives .....  | 1         |
| <b>2</b> | <b>Details of Monitoring Programme</b> .....                                  | <b>2</b>  |
| 2.1      | Pollutants Monitored .....  | 2         |
| 2.2      | Air Quality Limit Values and Objectives .....                                 | 3         |
| 2.3      | Monitoring Methodologies .....  | 4         |
| 2.4      | Monitoring sites .....  | 5         |
| <b>3</b> | <b>Quality Assurance and Data Capture</b> .....                               | <b>14</b> |
| 3.1      | Quality Assurance and Quality Control .....                                   | 14        |
| 3.2      | Data Capture .....  | 14        |
| 3.3      | Diffusion Tube Uncertainty and Detection Limits .....                         | 14        |
| <b>4</b> | <b>Results and Discussion</b> .....   | <b>15</b> |
| 4.1      | Presentation of Results.....  | 15        |
| 4.2      | Comparison with NO <sub>2</sub> Guidelines, Limit Values and Objectives ..... | 19        |
| 4.3      | Temporal Variation in NO <sub>2</sub> Concentration.....                      | 20        |
| 4.4      | Hydrocarbons .....  | 27        |
| <b>5</b> | <b>Conclusions and Recommendations</b> .....                                  | <b>36</b> |
| 5.1      | NO <sub>2</sub> Results.....  | 36        |
| 5.2      | Hydrocarbon Diffusion Tube Results .....                                      | 36        |
| 5.3      | Recommendations.....  | 37        |
| <b>6</b> | <b>Acknowledgements</b> .....   | <b>38</b> |
| <b>7</b> | <b>References</b> .....   | <b>39</b> |

## Appendices

|            |   |
|------------|---|
| Appendix 1 | Air Quality Limit Values, Objectives and Guidelines                 |
| Appendix 2 | Calibration Procedures for Automatic Analyser                       |
| Appendix 3 | Nitrogen Dioxide Diffusion Tubes: Bias Adjustment Factor            |
| Appendix 4 | BTEX Diffusion Tubes: Monthly Datasets and Annual Means 1997 - 2016 |

# 1 Introduction

## 1.1 Background

This report describes a programme of air quality monitoring carried out on the island of Jersey in 2016, undertaken by Ricardo Energy & Environment, on behalf of the States of Jersey Environmental Health Services. This is the 20<sup>th</sup> consecutive year in which an annual monitoring programme has been carried out; the first was undertaken in 1997. This ongoing monitoring programme has provided a long-term dataset of pollutant concentrations.

The pollutants measured were nitrogen dioxide (NO<sub>2</sub>), and a range of hydrocarbon species (benzene, toluene, ethylbenzene and three xylene compounds). NO<sub>2</sub> was measured by an automatic monitor, situated at Halkett Place, St Helier. This was supplemented by indicative monitoring of NO<sub>2</sub> at a total of 21 locations on the island (including Halkett Place), using low cost passive samplers (Palmer type diffusion tubes). The suite of hydrocarbon species were monitored using 'BTEX' diffusion tubes at five sites.

This report presents the results obtained in the 2016 survey, and compares the data from Jersey with relevant air quality limit values, objectives and guidelines as well as data from selected UK monitoring stations and previous years' monitoring programmes.

## 1.2 Objectives

This year's monitoring is the continuation of a survey that has been carried out since 1997. This report is the latest in a series of annual reports<sup>1</sup>. The objective, as in previous years, was to monitor at sites where pollutant concentrations were expected to be high, and compare these with background locations. The monitoring sites consisted of urban and rural background sites, in addition to locations where higher pollutant concentrations might be expected, such as roadside and kerbside sites, as well as locations close to specific emission sources (for example the airport).

## 2 Details of Monitoring Programme

### 2.1 Pollutants Monitored

#### 2.1.1 NO<sub>x</sub>

A mixture of nitrogen dioxide (NO<sub>2</sub>) and nitric oxide (NO) is emitted by combustion processes. The mixture of oxides of nitrogen is termed NO<sub>x</sub>. NO is subsequently oxidised to NO<sub>2</sub> in the atmosphere. NO<sub>2</sub> is an irritant to the respiratory system, and can affect human health. Ambient concentrations of NO<sub>2</sub> are likely to be highest in the most built-up areas, especially where traffic is congested, or where buildings either side of the street create a 'canyon' effect, impeding the dispersion of vehicle emissions. The units used for NO<sub>2</sub> concentration in this report are micrograms per cubic metre (µg m<sup>-3</sup>). The earliest reports in this series used parts per billion (ppb): to convert from µg m<sup>-3</sup> to ppb for comparison with the earlier reports, if required, the following relationship should be used:

1 µg m<sup>-3</sup> = 0.523 ppb for nitrogen dioxide at 293 K (20 °C) and 1013 mb.

#### 2.1.2 Hydrocarbons

There are many sources of hydrocarbon emissions. Methane for example, is a naturally occurring gas, while xylene compounds are synthetic and used in many applications, for example as solvents in paint. A range of hydrocarbons are found in vehicle fuel, and occur in vehicle emissions. In most urban areas, vehicle emissions constitute the major source of hydrocarbons, in particular benzene. There is the potential they may be released to the air from facilities where fuels are stored or handled (such as petrol stations).

A wide range of hydrocarbons are emitted from both fuel storage and handling, and in fuel combustion from vehicles. It is not easy to measure all of these hydrocarbon species (particularly, the most volatile) without expensive continuous monitoring systems. However, there are four species associated with fuels and vehicle emissions which, though not the largest constituent of such emissions, are easy to monitor using passive samplers due to their moderate volatility. These are benzene, toluene, ethylbenzene and xylene. Diffusion tubes are available for monitoring this group of organic compounds, and are known as 'BTEX' tubes (BTEX being an acronym for the compounds measured).

##### 2.1.2.1 Benzene

Of the organic compounds measured in this study, benzene is the one of most concern, as it is a known human carcinogen; long-term exposure can cause leukaemia. It is found in small concentrations in petrol and other liquid fuels; for urban areas, the major source for benzene is vehicle emissions. In the UK, the annual mean concentrations for benzene in ambient air are typically less than 3 µg m<sup>-3</sup>. In this report, concentrations of benzene are expressed in micrograms per cubic metre (µg m<sup>-3</sup>). Some earlier reports in the series used parts per billion (ppb): to convert to ppb, if necessary, the following relationship should be used:

1 µg m<sup>-3</sup> = 0.307 ppb for benzene at 293 K (20 °C) and 1013 mb (only applicable to benzene).

##### 2.1.2.2 Toluene

Toluene is found in petrol, it can be used as a solvent in paints and inks; it is also a constituent of tobacco smoke. There are no EU limit values for ambient toluene concentration, although there are occupational limits for workplace exposure<sup>2</sup>, and a World Health Organisation (WHO) guideline of 260 µg m<sup>-3</sup> for the weekly mean<sup>3</sup>.

The major concern associated with human exposure to toluene is its effect on the central nervous system: it is not believed to be carcinogenic<sup>3</sup>. Typical ambient concentrations are usually less than 5 µg m<sup>-3</sup> in rural areas and in the range 5-150 µg m<sup>-3</sup> in urban areas<sup>3</sup>.

In this report, concentrations are expressed in micrograms per cubic metre (µg m<sup>-3</sup>). Some earlier reports in the series used parts per billion (ppb): to convert to ppb, if necessary, the following relationship should be used:

1 µg m<sup>-3</sup> = 0.261 ppb for toluene at 293 K (20 °C) and 1013 mb (only applicable to toluene).

### 2.1.2.3 Ethylbenzene

There are no limits for ambient concentration of ethylbenzene, and although there are occupational limits relating to workplace exposure<sup>2</sup>, as discussed in previous reports, these are several orders of magnitude higher than typical outdoor ambient concentrations.

### 2.1.2.4 Xylene

Xylene exists in ortho (o), para (p) and meta (m) isomers. Occupational limits relating to workplace exposure are 100 ppm over 8 hours and 150 ppm over 10 minutes. Xylene, like toluene, can cause odour nuisance near processes where it is used (such as vehicle paint spraying).

In this report, concentrations of ethylbenzene and xylenes are expressed in micrograms per cubic metre ( $\mu\text{g m}^{-3}$ ). Some earlier reports used parts per billion (ppb): to convert to ppb, if required, the following relationship should be used:

$1 \mu\text{g m}^{-3} = 0.226 \text{ ppb}$  for ethylbenzene or xylenes at 293 K (20 °C) and 1013 mb (applicable to ethylbenzene, m-, p- and o-xylene).

## 2.2 Air Quality Limit Values and Objectives

This report compares the results of the monitoring survey with air quality limit values and objectives applicable worldwide, in Europe and the UK. These are summarised in Appendix 1 and below.

### 2.2.1 World Health Organisation

In 2005, the World Health Organisation published revised air quality guidelines<sup>7</sup> for pollutants including NO<sub>2</sub>. These were set using currently available scientific evidence on the effects of air pollutants on health and vegetation. The WHO guidelines are advisory only, and do not carry any mandatory status. They are summarised in Appendix 1. There are also WHO guidelines for ambient concentrations of, benzene and toluene<sup>3</sup>.

The WHO non-mandatory guideline<sup>7</sup> for NO<sub>2</sub> is that the annual mean should not exceed 40  $\mu\text{g m}^{-3}$ . For toluene, the WHO recommends a guideline<sup>3</sup> value of 0.26  $\text{mg m}^{-3}$  (260  $\mu\text{g m}^{-3}$ ) for the weekly mean.

### 2.2.2 European Community

Throughout Europe, ambient air quality is regulated by the EC Directive on Ambient Air Quality and Cleaner Air for Europe (2008/50/EC)<sup>4</sup>. This Directive (referred to as the Air Quality Directive) sets limit values, which are mandatory, and other requirements for the protection of human health and ecosystems. Both NO<sub>2</sub> and benzene are covered by this Directive. The States of Jersey have agreed to meet the EU health limits.

The Air Quality Directive<sup>4</sup> contains limit values for NO<sub>2</sub> as follows:

- 200  $\mu\text{g m}^{-3}$  as an hourly mean, not to be exceeded more than 18 times per calendar year. To have been achieved by 1<sup>st</sup> January 2010.
- 40  $\mu\text{g m}^{-3}$  as an annual mean, for protection of human health. To have been achieved by 1<sup>st</sup> January 2010.
- There is also a limit for annual mean total oxides of nitrogen (NO<sub>x</sub>), of 30  $\mu\text{g m}^{-3}$ , for protection of vegetation (relevant in rural areas only).

The same Directive<sup>4</sup> also sets a limit of 5  $\mu\text{g m}^{-3}$  for the annual mean of benzene, to have been achieved by 2010. Having achieved the limit values by the due dates, Member States must maintain compliance in future years.

### 2.2.3 UK Air Quality Strategy

The UK Air Quality Strategy (AQS)<sup>5</sup> contains standards and objectives for a range of pollutants including NO<sub>2</sub> and benzene. These are also summarised in Appendix 1. Only those objectives relating to the whole UK (as opposed to specifically England, Wales, etc.) are applicable to Jersey, and the AQS does not at present have mandatory status in the States of Jersey.

The UK Air Quality Strategy's objectives for NO<sub>2</sub> are very similar to the EC Directive limits above, the only difference being that they had to be achieved by 31<sup>st</sup> December 2005.

The UK Air Quality Strategy<sup>5</sup> sets the following objectives for benzene:

- 16.25  $\mu\text{g m}^{-3}$  (for the running annual mean), to have been achieved by 31<sup>st</sup> December 2003.
- 3.25  $\mu\text{g m}^{-3}$  (for the calendar year mean in Scotland and Northern Ireland), to have been achieved by 31<sup>st</sup> December 2010.
- 5  $\mu\text{g m}^{-3}$  (for the calendar year mean in England and Wales), to have been achieved by 31<sup>st</sup> December 2010.

Both the 2010 benzene objectives apply to specific parts of the UK only, so strictly speaking do not apply in Jersey. However, the objective of 5  $\mu\text{g m}^{-3}$  applicable to England and Wales is the same as the EC Directive limit value, which is applicable in Jersey.

## 2.3 Monitoring Methodologies

### 2.3.1 Automatic Methods

Oxides of nitrogen were monitored using a chemiluminescent analyser, located at the Central Market, Halkett Place, St Helier. This automatic monitoring site started operation in January 2008.

The chemiluminescent  $\text{NO}_x$  analyser provides a continuous output, proportional to the pollutant concentration. The output is recorded and stored every 10 seconds, and averaged to 15-minute average values by internal data loggers. The analyser is connected to a modem and interrogated by telephone to download the data to Ricardo Energy & Environment. Data are downloaded daily and uploaded onto the publicly available website: <http://jerseyair.ricardo-aea.com>

### 2.3.2 Diffusive Sampling of $\text{NO}_2$ and Hydrocarbons

The automatic monitoring site at Halkett Place was supplemented by indicative monitoring, using diffusion tubes, for  $\text{NO}_2$  and BTEX hydrocarbons. Diffusion tubes are 'passive' samplers, i.e. they work by absorbing the pollutants direct from the surrounding air and need no power supply.

#### 2.3.2.1 $\text{NO}_2$ diffusion tubes

Palmes-type diffusion tubes were used for  $\text{NO}_2$ . These consist of a small plastic tube, approximately 7 cm long. During sampling, one end is open and the other closed. The closed end contains an absorbent for the gaseous species (in this case  $\text{NO}_2$ ) to be monitored. The tube is mounted vertically with the open end at the bottom. Ambient  $\text{NO}_2$  diffuses up the tube during exposure, and is absorbed as nitrite. The average ambient pollutant concentration for the exposure period is calculated from the amount of pollutant absorbed.

#### 2.3.2.2 BTEX diffusion tubes

BTEX diffusion tubes are different in appearance from  $\text{NO}_2$  tubes. They are longer, thinner, and made of metal rather than plastic. These tubes are fitted at both ends with brass Swagelok fittings. A separate 'diffusion cap' is supplied. Immediately before exposure, the Swagelok end fitting is replaced with the diffusion cap. The cap is removed after exposure, and is replaced with the Swagelok fitting. BTEX diffusion tubes are very sensitive to interference by solvents.

#### 2.3.2.3 Preparation and analysis

Diffusion tubes were prepared and analysed by Gradko International Ltd. They were supplied to the local Technical Officers of Jersey's Environmental Health Services, who carried out the tube changing. The tubes were supplied in a sealed condition prior to exposure. The tubes were exposed at the sites for a set period of time. After exposure, the tubes were again sealed and returned to Gradko for analysis. The year was divided into twelve exposure periods approximating to calendar months. The duration of the exposure periods varied between four and five weeks.

The UK Local Air Quality Management Technical Guidance LAQM.TG(16)<sup>6</sup> states that when using diffusion tubes for indicative  $\text{NO}_2$  monitoring, correction should be made where applicable for any systematic bias (i.e. over-read or under-read compared to the automatic chemiluminescent technique; the reference method for  $\text{NO}_2$ ). By co-locating diffusion tubes with the automatic monitoring site at Halkett Place, it was possible to calculate a bias adjustment factor, which could be applied to the annual mean diffusion tube measurements in this survey. The  $\text{NO}_2$  diffusion tube results in this report are uncorrected except where clearly specified. BTEX diffusion tubes are not affected by the same sources of bias as  $\text{NO}_2$  diffusion tubes, therefore the BTEX results have not been bias adjusted.



Each monthly batch of diffusion tubes was accompanied by a 'travel blank' NO<sub>2</sub> and BTEX tube. These tubes were taken with the exposure tubes to the site, but were not exposed. They were returned to the site operator's premises, and were kept in a sealed bag in a cupboard. When the exposed tubes were collected, the 'travel blank' tubes were taken by the operator to the site. The travel blanks were sent with the exposed tubes for analysis. The purpose of these tubes was to indicate if any contamination of the tubes had occurred. This was particularly relevant in the case of the BTEX tubes because they can easily be contaminated by exposure to solvents.

Gradko also retained one tube from each batch, in a sealed bag in their premises, as a 'laboratory blank'. The travel blank results for NO<sub>2</sub> were not used to apply any correction to the results from the exposed tubes – only to highlight possible contamination issues. BTEX results were blank corrected using the travel blank, or the laboratory blank where the analyst judged this to be appropriate.

#### 2.3.2.4 Calendar of diffusion tube exposure periods

The calendar of exposure periods used for the NO<sub>2</sub> and BTEX diffusion tubes is shown in Table 2–1. They were intended to be an approximation to calendar months, while allowing for the tubes to be changed on a consistent day of the week.

**Table 2–1: Diffusion tube exposure periods**

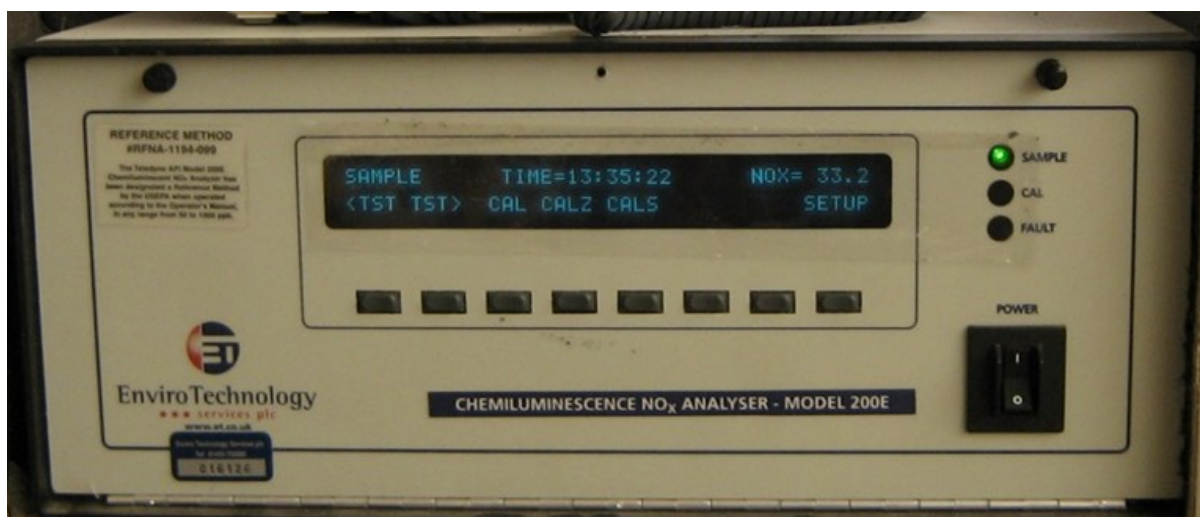
| Month     | Start date | End date   |
|-----------|------------|------------|
| January   | 06/01/2016 | 03/02/2016 |
| February  | 03/02/2016 | 02/03/2016 |
| March     | 02/03/2016 | 30/03/2016 |
| April     | 30/03/2016 | 27/04/2016 |
| May       | 27/04/2016 | 25/05/2016 |
| June      | 25/05/2016 | 29/06/2016 |
| July      | 29/06/2016 | 27/07/2016 |
| August    | 27/07/2016 | 24/08/2016 |
| September | 24/08/2016 | 28/09/2016 |
| October   | 28/09/2016 | 26/10/2016 |
| November  | 26/10/2016 | 30/11/2016 |
| December  | 30/11/2016 | 04/01/2017 |

## 2.4 Monitoring sites

Automatic monitoring of oxides of nitrogen was carried out at the Central Market, Halkett Place, in St Helier (Figure 2-1). This site represents a roadside location where levels of NO<sub>2</sub> are expected to be high and where members of the public are regularly exposed for periods of one hour or more. The inlet funnel (circled) is just visible as a white tube protruding from the building façade above the hanging basket just beyond the yellow shop front. It is at a height of about four metres.

**Figure 2-1: Automatic NO<sub>x</sub> monitoring site, Halkett Place, St Helier**

The chemiluminescent NO<sub>x</sub> analyser itself, Figure 2-2, is located within the building. The analyser is calibrated monthly by the States of Jersey's Environmental Health Team. Details of the calibration procedure are provided in Appendix 2.

**Figure 2-2: Automatic NO<sub>x</sub> analyser at Halkett Place, St Helier**

As explained in section 2.3, diffusion tubes were used to monitor NO<sub>2</sub> at sites in a range of different environments around Jersey. Table 2-2 lists the 21 NO<sub>2</sub> diffusion tube sites used during 2016, Figure 2-3 and Figure 2-7 show their locations.

**Table 2-2: NO<sub>2</sub> monitoring sites in Jersey**

| Site name                        | Grid Reference | Method  | Description   |
|----------------------------------|----------------|---|---|
| Halkett Place (Central Market)   | 653 486        | Automatic analyser, diffusion tubes in triplicate | Central Market, Halkett Place, St Helier                      |
| Le Bas Centre                    | 658 489        | Diffusion tube                                    | Urban background  |
| Union Street                     | 653 486        | Diffusion tube                                    | Kerbside in St Helier – corner of Union Street and New Street |
| New Street                       | 653 485        | Diffusion tube                                    | Kerbside in St Helier   |
| Broad Street                     | 652 486        | Diffusion tube                                    | Urban background  |
| Weighbridge                      | 651 483        | Diffusion tube                                    | Roadside at bus station near centre of St Helier              |
| Liberation Station               | 652 485        | Diffusion tube                                    | Kerbside opposite entrance to new bus station                 |
| Georgetown                       | 661 480        | Diffusion tube                                    | Kerbside on major road  |
| The Parade                       | 648 489        | Diffusion tube                                    | Roadside site at General Hospital                             |
| Les Quennevais                   | 579 496        | Diffusion tube                                    | Residential background  |
| Beaumont                         | 597 516        | Diffusion tube                                    | Kerbside  |
| Rue des Raisies                  | 689 529        | Diffusion tube                                    | Rural background  |
| Bellozanne STW, Route es Nouaux  | 639 497        | Diffusion tube                                    | Sewage Treatment Works  |
| Bellozanne STW, Gate 4           | 639 500        | Diffusion tube                                    | Sewage Treatment Works  |
| Bellozanne STW, Green Waste Sign | 639 502        | Diffusion tube                                    | Sewage Treatment Works  |
| La Collette Gardens              | 651 474        | Diffusion tube                                    | Power Station   |
| South Hill Fort Regent           | 650 478        | Diffusion tube                                    | Power Station   |
| South Hill Park                  | 650 474        | Diffusion tube                                    | Power Station   |
| Castle St & Esplanade Junction   | 648 483        | Diffusion tube                                    | Roadside  |
| Carey Olson Esplanade            | 647 484        | Diffusion tube                                    | Roadside  |
| Charring Cross, St Helier        | 649 484        | Diffusion tube                                    | Roadside  |

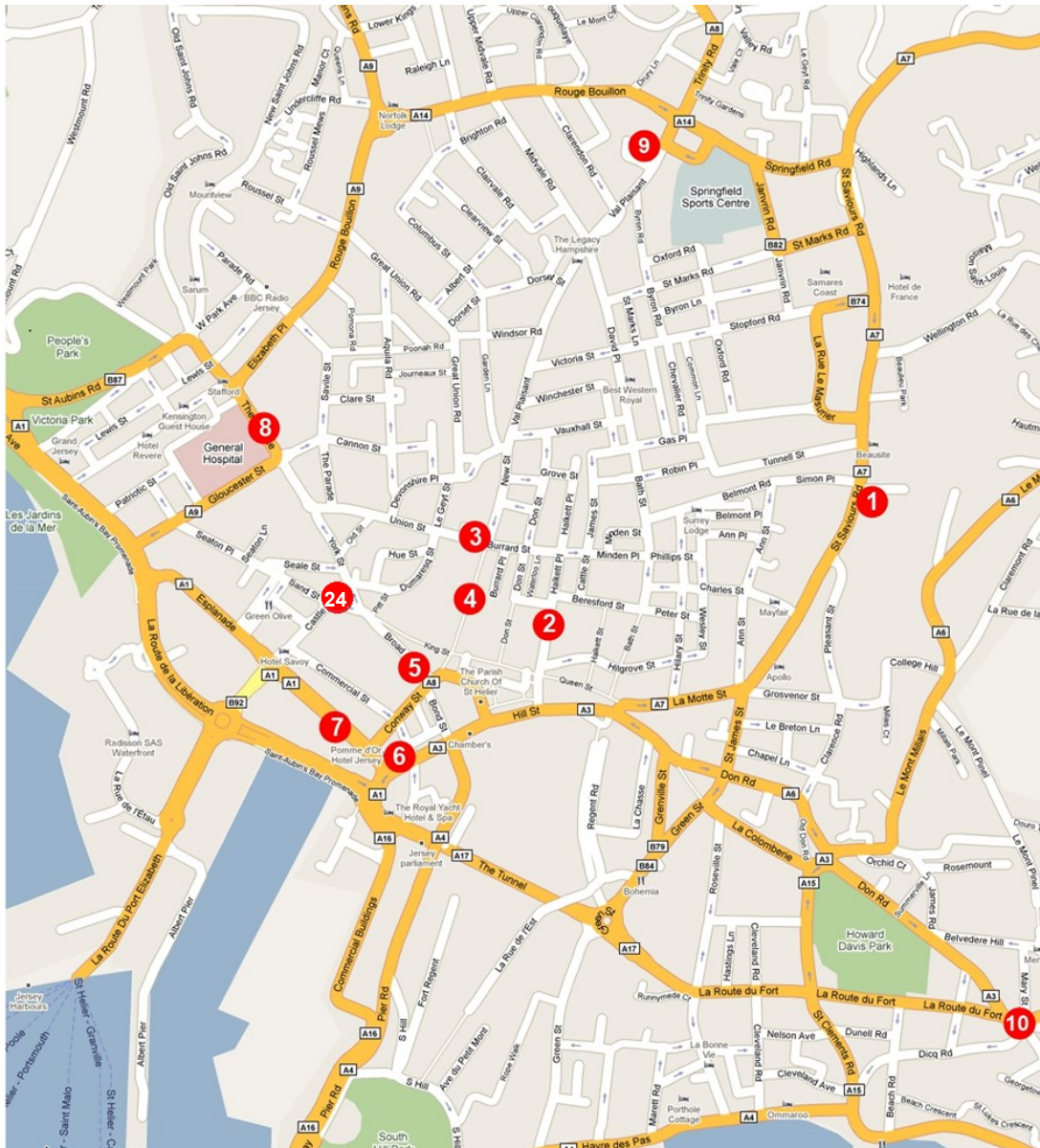
Kerbside: less than 1 m from kerb of a busy road.

Roadside: 1 – 5 m from kerb of a busy road.

Background: > 50 m from the kerb of any major road.

Note: all grid references are from OS 1:25000 Leisure Map of Jersey and are given to the nearest 100 m.

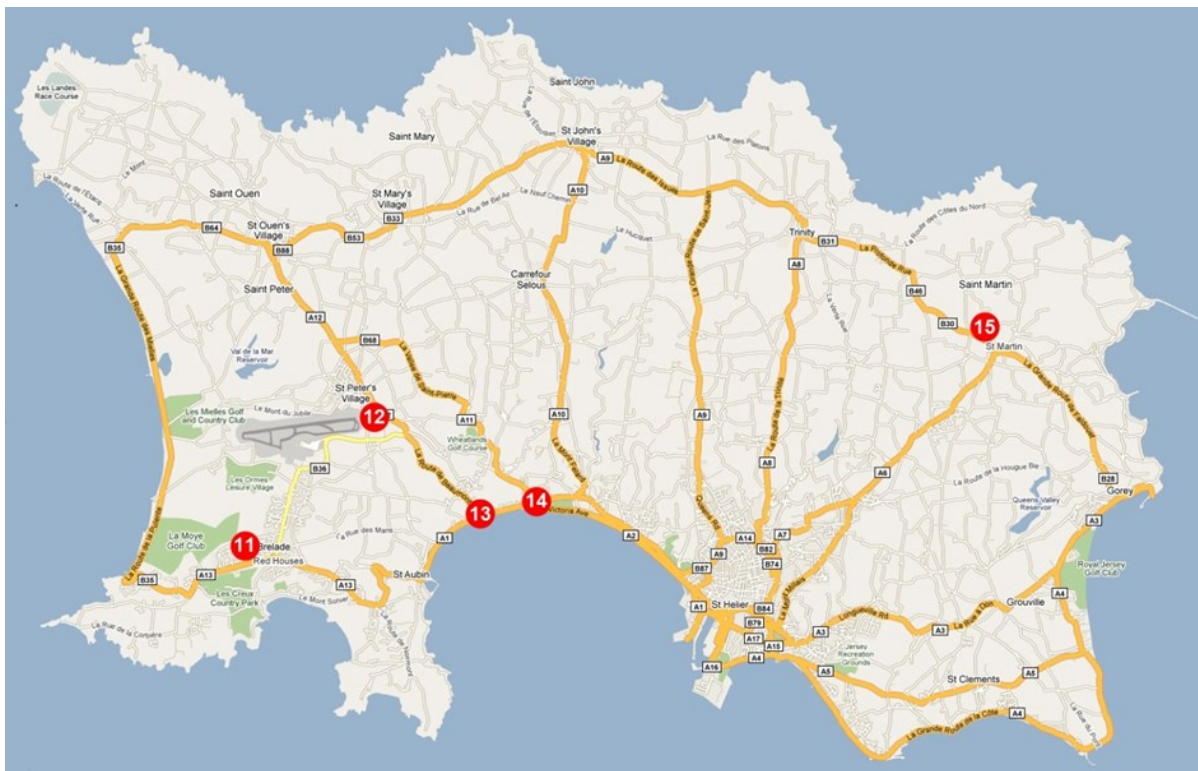
Figure 2-3: Site locations in St Helier town



Key:

| Number | Site name                      | Pollutants   | Number | Site Name          | Pollutants      |
|--------|--------------------------------|--|--------|--------------------|-----------------|
| 1      | Les Bas Centre                 | NO <sub>2</sub> , BTEX   | 7      | Liberation Station | NO <sub>2</sub> |
| 2      | Halkett Place (Central Market) | NO <sub>2</sub> , BTEX, automatic NO <sub>x</sub> (and automatic PM <sub>10</sub> – locally managed) | 8      | The Parade         | NO <sub>2</sub> |
| 3      | Union Street                   | NO <sub>2</sub>  | 9      | Faux Bie           | BTEX            |
| 4      | New Street                     | NO <sub>2</sub>  | 10     | Georgetown         | NO <sub>2</sub> |
| 5      | Broad Street                   | NO <sub>2</sub>  | 24     | Charring Cross     | NO <sub>2</sub> |
| 6      | Weighbridge                    | NO <sub>2</sub>  |        |                    |                 |

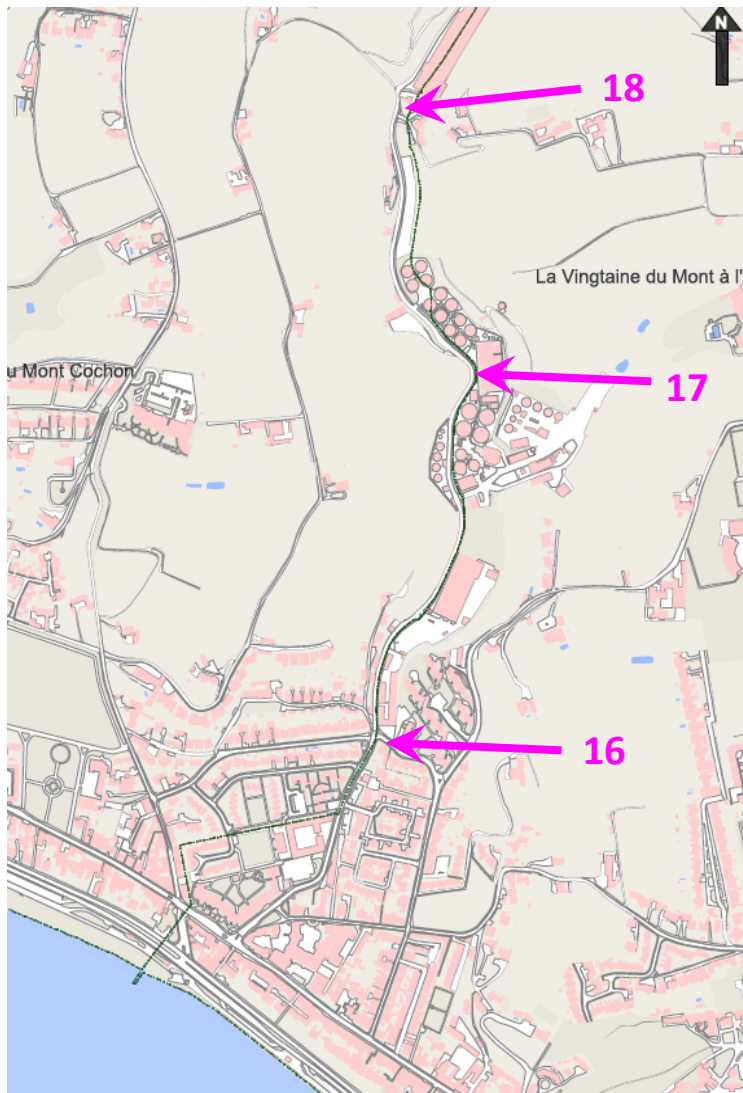
Figure 2-4: Site locations outside St Helier



Key:

| Number | Site name      | Pollutants      | Number | Site name       | Pollutants      |
|--------|----------------|-----------------|--------|-----------------|-----------------|
| 11     | Les Quennevais | NO <sub>2</sub> | 14     | Hansford Lane   | BTEX            |
| 12     | Airport Fence  | BTEX            | 15     | Rue Des Raisies | NO <sub>2</sub> |
| 13     | Beaumont       | NO <sub>2</sub> |        |                 |                 |

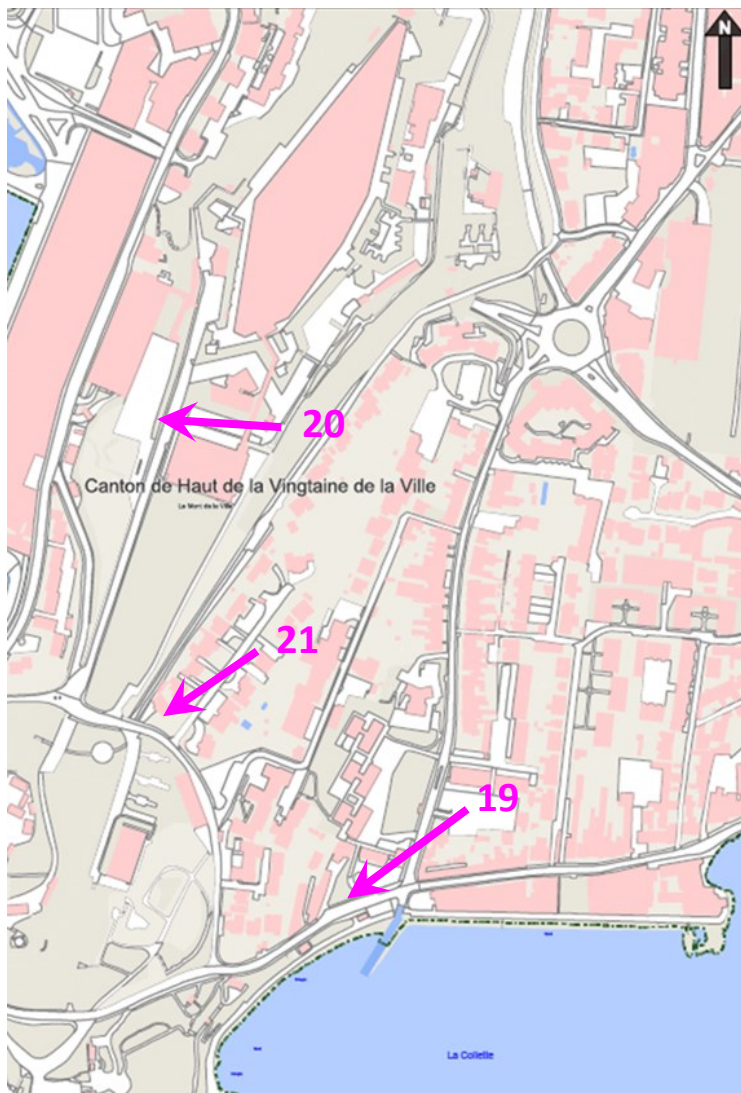
**Figure 2-5: Site locations on Bellozanne Road near to sewage treatment works**



Key:

| Number | Site name                         | Pollutants      |
|--------|-----------------------------------|-----------------|
| 16     | Bellozanne STW, Route es Nouveaux | NO <sub>2</sub> |
| 17     | Bellozanne STW, Gate 4            | NO <sub>2</sub> |
| 18     | Bellozanne STW, Green Waste Sign  | NO <sub>2</sub> |

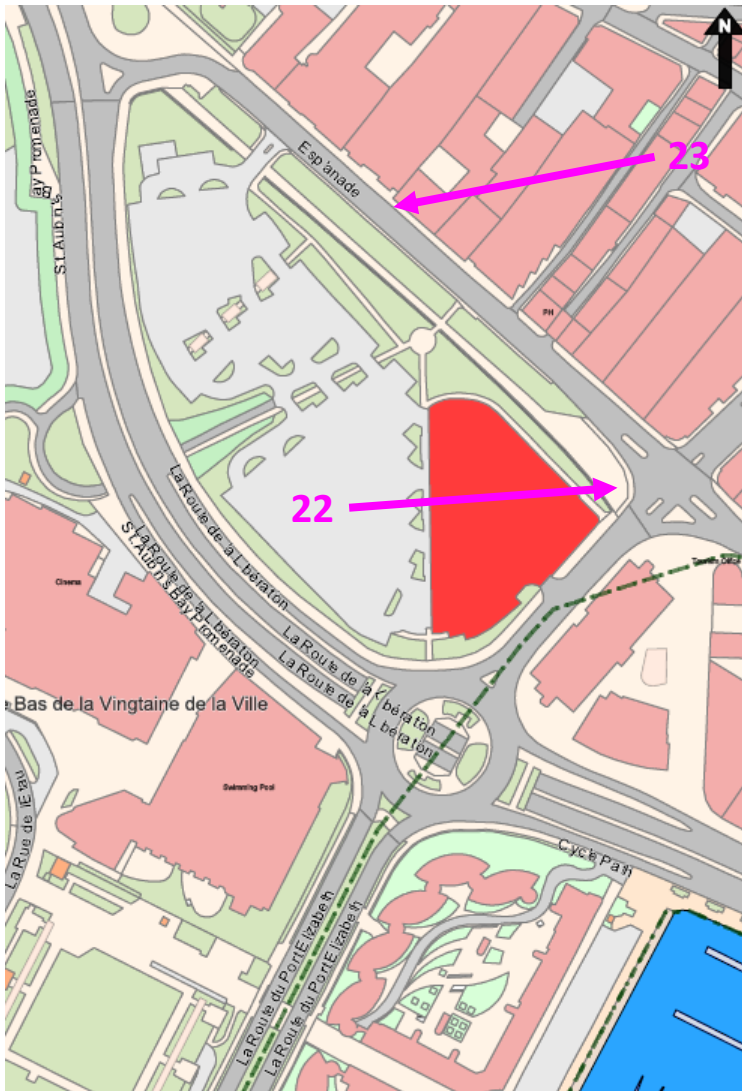
Figure 2-6: Site locations at East & North-East of La Collette



Key:

| Number | Site name              | Pollutants      |
|--------|------------------------|-----------------|
| 19     | La Collette Gardens    | NO <sub>2</sub> |
| 20     | South Hill Fort Regent | NO <sub>2</sub> |
| 21     | South Hill Park        | NO <sub>2</sub> |

Figure 2-7: Site location Town Centre



Key:

| Number | Site name                         | Pollutants      |
|--------|-----------------------------------|-----------------|
| 22     | Junction of Castle St & Esplanade | NO <sub>2</sub> |
| 23     | Carey Olson Esplanade             | NO <sub>2</sub> |

Diffusion tubes were also co-located with the automatic monitoring site at Halkett Place, and the results of this co-located monitoring are used to assess the precision and accuracy of the diffusion tubes, relative to the automatic chemiluminescent analyser, which is defined within Europe as the reference method for NO<sub>2</sub>. The tubes at this site were exposed in triplicate, to allow assessment of precision. All other diffusion tube sites use single tubes.

BTEX hydrocarbons were monitored at five sites during 2016, shown in Table 2–3. The aim was to investigate sites likely to be affected by different emission sources, and compare these with background sites.



**Table 2-3: BTEX diffusion tube monitoring sites**

| Site name      | Grid reference | Description   |
|----------------|----------------|---|
| Les Bas Centre | 658 489        | Urban background site which has operated since 1997.  |
| Halkett Place  | 653 486        | Urban roadside site which has operated since Sept 2011  |
| Airport Fence  | 512 598        | Rural background site on the airport perimeter fence, in operation since March 2012.                          |
| Hansford Lane  | 633 499        | Urban background site near a paint spraying process.  |
| Faux Bie       | 658 495        | Urban background site, near fuel filling station. Represents the nearest public exposure to a petrol station. |

Le Bas Centre is intended to monitor hydrocarbon concentrations at an urban background location. Hansford Lane is close to a paint spraying process, a potential source of hydrocarbon emissions, especially toluene and xylenes.

The Faux Bie site is located near a fuel filling station, a potential source of hydrocarbon emissions including benzene. The monitoring site is between a fuel filling station and a nearby block of flats and is intended to represent public exposure to emissions from the filling station. The fuel supplier uses a vapour recovery system to reduce emissions when filling the storage tanks, and has done so since December 2003.

The Airport Fence site was introduced as a replacement to the original Jersey Airport location, which had to be relocated in 2012.

## 3 Quality Assurance and Data Capture

### 3.1 Quality Assurance and Quality Control

A full intercalibration audit of the Jersey Halkett Place air quality monitoring site takes place annually. In addition to instrument and calibration standard checking, the air intake sampling system is cleaned and all other aspects of site infrastructure are checked.

Following the instrument and calibration gas checking, and the subsequent scaling and ratification of the data, the overall accuracy and precision figures for the pollutants monitored at Jersey can be summarised as shown in Table 3–1. These are given in ppb, the “native” unit of the automatic data.

**Table 3–1: Estimated accuracy and precision of the data presented**

| Pollutant       | Precision | Accuracy |
|-----------------|-----------|----------|
| NO              | ± 5 ppb   | ± 15%    |
| NO <sub>2</sub> | ± 5 ppb   | ± 15%    |

### 3.2 Data Capture

Overall data capture statistics for the monitoring site are given in Table 3–2. An annual data capture rate of 85% or greater for ratified data is recommended in the Defra Technical Guidance LAQM.TG(16)<sup>6</sup> in order to assess annual data sets against long term targets. The Halkett Place site surpassed this target capture rate and there were no significant data gaps above 24 hours.

**Table 3–2: Jersey Halkett Place – Data capture statistics 2016**

| Site                 | NO    | NO <sub>2</sub> | NO <sub>x</sub> |
|----------------------|-------|-----------------|-----------------|
| Jersey Halkett Place | 95.6% | 95.6%           | 95.6%           |

### 3.3 Diffusion Tube Uncertainty and Detection Limits

Diffusion tubes are an indicative technique, with greater uncertainty than more sophisticated automatic methods. The reported margins of uncertainty on the analysis ranged from ± 5.2% to ± 7.8% for the NO<sub>2</sub> diffusion tubes and from ± 9.6% to ± 10.9% for the BTEX hydrocarbons. However, uncertainties arising from the exposure phase also contribute to the overall uncertainty; it is usually estimated that the overall uncertainty on diffusion tube measurements are approximately ± 25% for NO<sub>2</sub> and BTEX hydrocarbons.

The limits of detection in ambient air depend partly on the exposure time, and therefore vary to some extent from month to month. Typically the detection limit for NO<sub>2</sub> in 2016 was equivalent to an ambient concentration of 0.2 µg m<sup>-3</sup> assuming an exposure period of 28 days. For hydrocarbons, the limit of detection equated to ambient concentrations in the region of 0.21 to 0.27 µg m<sup>-3</sup>. The laboratory advises that results lower than 10 times the limit of detection will have a higher level of uncertainty. In the case of the NO<sub>2</sub> sites, ambient concentrations are well above this threshold. However, for BTEX hydrocarbons at Jersey, this was the case for most measurements with the exception of toluene, and of m+p xylenes at some sites. The BTEX hydrocarbon measurements are therefore likely to have overall uncertainty greater than ± 25% and should be treated as indicative only.

## 4 Results and Discussion

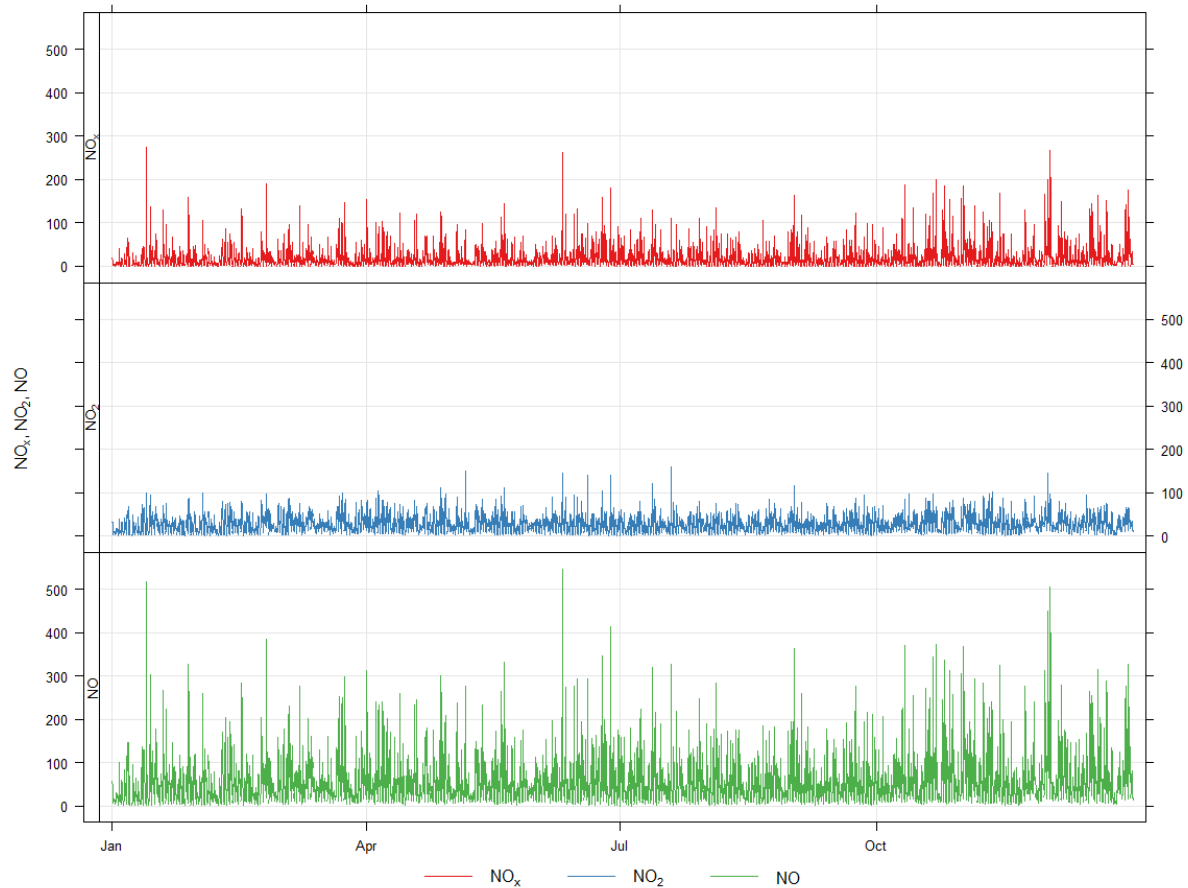
### 4.1 Presentation of Results

#### 4.1.1 Automatic NO<sub>2</sub> Monitoring Results

Table 4–1 shows the key statistics for oxides of nitrogen measured by the automatic analyser at Halkett Place. Table 4–1 shows time series plots of hourly mean NO, NO<sub>2</sub> and NO<sub>x</sub> concentrations. The purpose of these plots is to illustrate how concentrations of these pollutant species varied on a short time scale and throughout the year, Figure 4-1.

**Table 4–1: Oxides of nitrogen at Jersey Halkett Place – air quality statistics for 2016**

| Pollutant                    | NO $\mu\text{g m}^{-3}$ | NO <sub>2</sub> $\mu\text{g m}^{-3}$ | NO <sub>x</sub> $\mu\text{g m}^{-3}$ |
|------------------------------|-------------------------|--------------------------------------|--------------------------------------|
| Maximum 15-minute mean       | 575                     | 426                                  | 1167                                 |
| Maximum hourly mean          | 274                     | 159                                  | 546                                  |
| Maximum running 8-hour mean  | 121                     | 76                                   | 256                                  |
| Maximum running 24-hour mean | 77                      | 57                                   | 173                                  |
| Maximum daily mean           | 71                      | 53                                   | 162                                  |
| Average                      | 17                      | 27                                   | 52                                   |
| Data capture                 | 95.6                    | 95.6                                 | 95.6                                 |

**Figure 4-1: Time series plots of hourly mean pollutant concentrations at Halkett Place, 2016**

#### 4.1.2 NO<sub>2</sub> Diffusion Tube Results

NO<sub>2</sub> diffusion tube results are presented in Table 4.2. Although reported by the analyst to two decimal places, the monthly mean results reported here have been rounded to the nearest integer, in view of the estimated uncertainty of  $\pm 25\%$  on diffusion tube measurements. There are two exceptions - Les Quennevais and Rue des Raisies – where concentrations are typically less than  $10 \mu\text{g m}^{-3}$ : these sites' results are given to one decimal place.

The 3 Bellozane tube sites were removed at the end of August 2016 and Charing Cross, St. Helier was installed at the start of May 2016. The following tubes were missing: March 2016 “Junction of Castle Street and Esplanade” was mislaid after collection, September 2016 “Halkett Place 2” not received by laboratory, November 2016 “Beaumont” and “Rue des Raisies” tubes were missing on collection. The data for all sites in the October 2016 batch were spurious and unrepresentative compared to the automatic analyser. They have therefore, been invalidated and not included in this report. The cause of the spurious data is unknown however, as all tubes were affected it appears to be linked to either a malfunction during transportation or an error during analysis at the laboratory.

Table 4.2 includes monthly values as well as annual and bias adjusted annual means. Raw (not bias adjusted) monthly values are reported to allow for comparison against past data recorded before bias adjustment was introduced. Standard practice for a diffusion tube site with less than 9 months' of data is to annualise in order to get an annual mean. This procedure is described in TG(16)<sup>6</sup> and requires either a continuous background monitor or a background location diffusion tube site to have 12 months' data. Due to all the tubes for October being invalidated no site attained 12 months' data and there are no continuous background monitoring sites on Jersey. Therefore, no annual mean can be calculated for the 3 discontinued Bellozane sites or the new Charing Cross site. Individual monthly mean NO<sub>2</sub> results ranged from  $3.7 \mu\text{g m}^{-3}$  (in July at the rural Rue des Raisies site), to  $44 \mu\text{g m}^{-3}$  (in November at the kerbside Georgetown and in March at the Roadside Liberation Station sites).

**Table 4–2: NO<sub>2</sub> diffusion tube results 2016, Jersey. Concentrations (rounded), µg m<sup>-3</sup>.**

| Site                         | Jan-16 | Feb-16 | Mar-16 | Apr-16 | May-16 | Jun-16 | Jul-16 | Aug-16 | Sep-16 | Oct-16 | Nov-16 | Dec-16 | Annual mean<br>µg m <sup>-3</sup> | Annual mean<br>X BAF<br>µg m <sup>-3</sup> |
|------------------------------|--------|--------|--------|--------|--------|--------|--------|--------|--------|--------|--------|--------|-----------------------------------|--|
| Beaumont (K)                 | 27     | 31     | 41     | 37     | 39     | 37     | 26     | 31     | 33     | -      | -      | 33     | 34                                | 34   |
| Broad Street (K)             | 31     | 31     | 25     | 31     | 31     | 26     | 25     | 27     | 28     | -      | 32     | 32     | 29                                | 30   |
| Georgetown (K)               | 33     | 34     | 32     | 36     | 31     | 33     | 29     | 32     | 32     | -      | 44     | 42     | 35                                | 35   |
| The Parade (K)               | 26     | 27     | 22     | 24     | 22     | 22     | 21     | 23     | 22     | -      | 28     | 31     | 24                                | 25   |
| Weighbridge (K)              | 36     | 34     | 31     | 34     | 35     | 31     | 34     | 32     | 33     | -      | 34     | 40     | 34                                | 35   |
| Halkett Place 1 (R)          | 24     | 24     | 27     | 29     | 26     | 26     | 24     | 24     | 25     | -      | 28     | 28     | 26                                | 26   |
| Halkett Place 2 (R)          | 24     | 28     | 27     | 29     | 27     | 27     | 24     | 25     | -      | -      | 29     | 28     | 27                                | 27   |
| Halkett Place 3 (R)          | 26     | 28     | 27     | 29     | 24     | 27     | 24     | 26     | 26     | -      | 29     | 29     | 27                                | 27   |
| Halkett Place Mean           | 25     | 27     | 27     | 29     | 26     | 27     | 24     | 25     | 26     | -      | 29     | 28     | 27                                | 27   |
| Liberation Station (R)       | 28     | 13     | 44     | 36     | 34     | 30     | 27     | 29     | 33     | -      | 37     | 32     | 31                                | 32   |
| New Street (R)               | 34     | 27     | 21     | 19     | 20     | 18     | 19     | 18     | 19     | -      | 24     | 26     | 22                                | 23   |
| Union Street (R)             | 34     | 29     | 26     | 31     | 28     | 24     | 26     | 26     | 27     | -      | 29     | 34     | 29                                | 29   |
| Castle St/Esplanade (R)      | 21     | 18     | -      | 24     | 24     | 19     | 20     | 23     | 24     | -      | 28     | 32     | 23                                | 24   |
| Carey Olson Esplanade (R)    | 22     | 21     | 20     | 24     | 23     | 20     | 21     | 20     | 23     | -      | 25     | 31     | 23                                | 23   |
| Charing Cross, St Helier(R)* | -      | -      | -      | -      | 27     | 26     | 23     | 23     | 24     | -      | 29     | 32     | -                                 | -  |

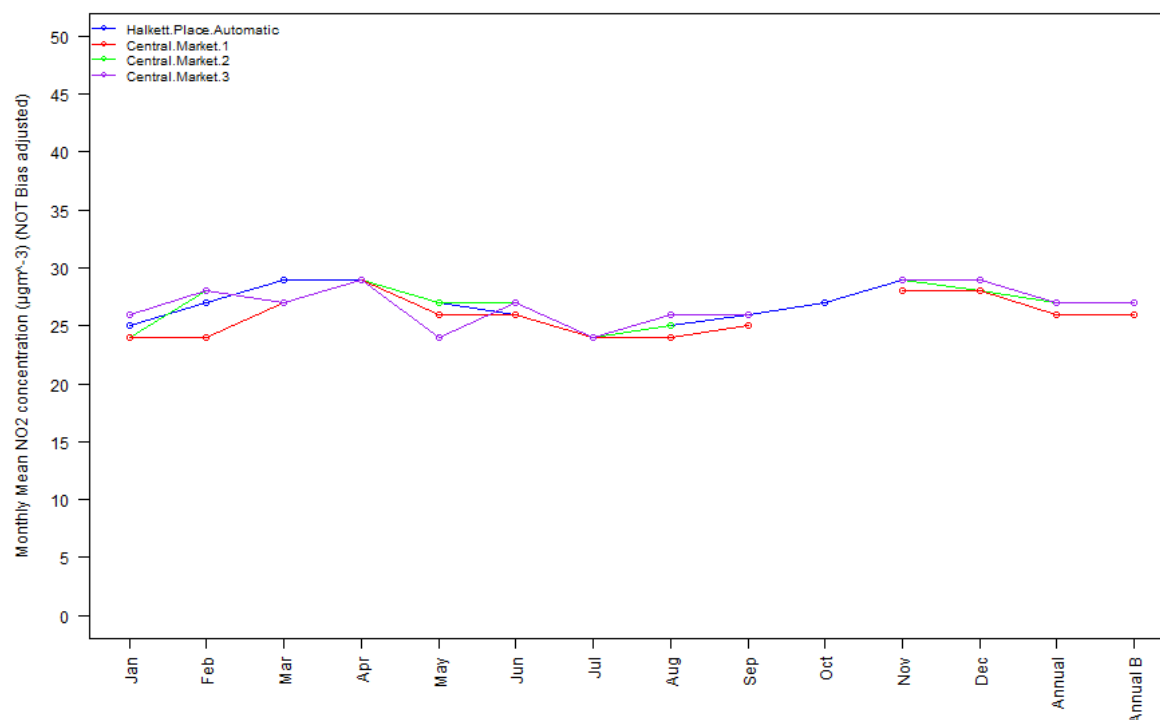
| Site                   | Jan-16 | Feb-16 | Mar-16 | Apr-16 | May-16 | Jun-16 | Jul-16 | Aug-16 | Sep-16 | Oct-16 | Nov-16 | Dec-16 | Annual mean<br>$\mu\text{g m}^{-3}$ | Annual mean<br>X BAF<br>$\mu\text{g m}^{-3}$ |
|------------------------|--------|--------|--------|--------|--------|--------|--------|--------|--------|--------|--------|--------|-------------------------------------|--|
| Bellozanne 1 *         | 10     | 17     | 15     | 12     | 16     | 13     | 14     | 15     | -      | -      | -      | -      | -                                   | -  |
| Bellozanne 2 *         | 15     | 12     | 13     | 14     | 11     | 11     | 9      | 11     | -      | -      | -      | -      | -                                   | -  |
| Bellozanne 3 *         | 18     | 10     | 9      | 10     | 8      | 8      | 7      | 9      | -      | -      | -      | -      | -                                   | -  |
| La Collette Gdns       | 14     | 15     | 15     | 14     | 14     | 13     | 13     | 13     | 13     | -      | 19     | 23     | 15                                  | 15   |
| South Hill Fort Regent | 18     | 16     | 16     | 16     | 14     | 14     | 15     | 14     | 16     | -      | 20     | 19     | 16                                  | 17   |
| South Hill Park        | 15     | 16     | 14     | 16     | 23     | 16     | 15     | 15     | 15     | -      | 19     | 19     | 16                                  | 17   |
| Le Bas Centre (UB)     | 22     | 19     | 18     | 21     | 19     | 16     | 17     | 17     | 19     | -      | 23     | 25     | 20                                  | 20   |
| Les Quennevais (S)     | 6.2    | 7.9    | 11.2   | 6.7    | 6.8    | 6.1    | 3.7    | 4.5    | 5.8    | -      | 10.4   | 14.4   | 7.6                                 | 7.7  |
| Rue des Raisies (Ru)   | 5.4    | 5.9    | 6.3    | 5.7    | 4.8    | 5.3    | 4.4    | 4.6    | 5.1    | -      | -      | 8.9    | 5.6                                 | 5.7  |

K = kerbside, R = roadside, UB = urban background, S = suburban, Ru = rural.

\* The annual mean for these four sites cannot be annualised, as per the recommendation in TG(16)<sup>6</sup>, as no site recorded 12 months of data.

Figure 4-2 shows the monthly mean NO<sub>2</sub> concentrations, as measured by diffusion tubes and by the automatic analyser, at Halkett Place. Agreement between the two methods were good.

**Figure 4-2: Co-location results at Halkett Place**



## 4.2 Comparison with NO<sub>2</sub> Guidelines, Limit Values and Objectives

Limit values, AQS objectives and WHO guidelines for NO<sub>2</sub> are shown in Appendix 1. These are based on the hourly and annual means.

The Air Quality Directive<sup>4</sup> contains limit values for NO<sub>2</sub> as follows:

- 200 µg m<sup>-3</sup> as an hourly mean, not to be exceeded more than 18 times per calendar year. To have been achieved by 1<sup>st</sup> January 2010.
- 40 µg m<sup>-3</sup> as an annual mean, for protection of human health. To have been achieved by 1<sup>st</sup> January 2010.
- There is also a limit for annual mean total oxides of nitrogen (NO<sub>x</sub>), of 30 µg m<sup>-3</sup>, for protection of vegetation (relevant in rural areas).

The UK Air Quality Strategy<sup>5</sup> contains objectives for NO<sub>2</sub>, which are very similar to the Directive limits above, the only difference being they had to be achieved by 31<sup>st</sup> December 2005.

The 1-hour mean at the Halkett Place automatic monitoring site did not exceed 200 µg m<sup>-3</sup> on any occasion in 2016. Therefore, this site met the EC Directive limit value and AQS objective for this parameter. The annual mean concentration of 27 µg m<sup>-3</sup> as measured by the automatic analyser at Halkett Place was well within the EC limit value of 40 µg m<sup>-3</sup>.

Due to the long sampling period of diffusion tubes, it is only possible to compare the results from the diffusion tube sites in this study against limit values relating to the annual mean. After applying the bias adjustment factor, no sites exceeded the annual mean limit value of 40 µg m<sup>-3</sup>.

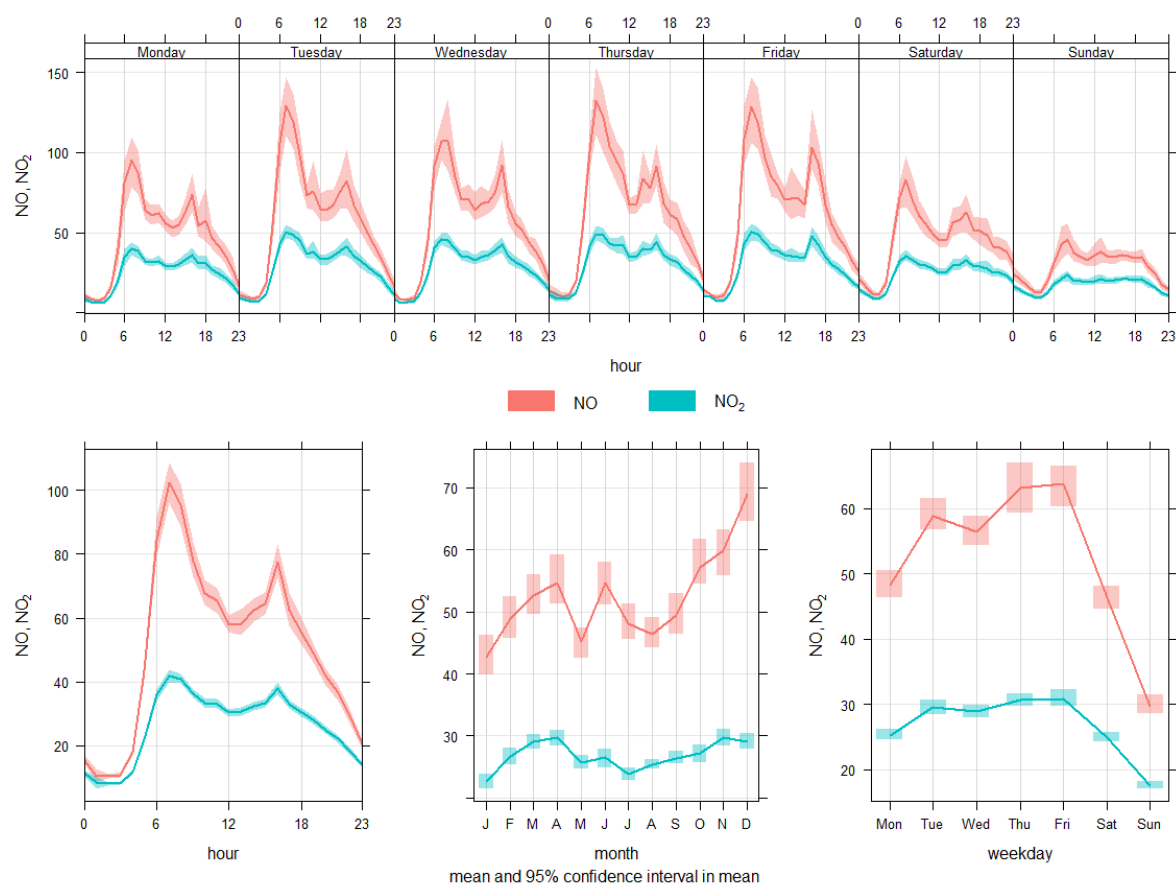
The 30 µg m<sup>-3</sup> limit for protection of vegetation is only applicable at rural sites, and is therefore only relevant to Rue des Raisies. The annual mean NO<sub>2</sub> concentration of 5.8 µg m<sup>-3</sup> at this rural site was well within the limit value.

## 4.3 Temporal Variation in NO<sub>2</sub> Concentration

### 4.3.1 Temporal Variation in NO and NO<sub>2</sub> at Halkett Place 2016

Figure 4-3-1 shows how concentrations of nitric oxide (NO) and nitrogen dioxide (NO<sub>2</sub>) typically varied over monthly, weekly, daily and hourly timescales, as measured by the automatic monitor at Halkett Place and averaged over the course of the year.

**Figure 4-3-1: Temporal variation in concentrations of NO and NO<sub>x</sub> at Halkett Place, 2016**



Seasonal variations are common for the pollutants measured at this site and can be observed in the 'month' plots of figure 4-3-1. Clear seasonal variation can be seen in the NO and NO<sub>2</sub> concentrations. The autumn and winter months recorded higher levels when emissions may be higher, and periods of cold, still weather reduce pollutant dispersion.

The analyses of each pollutants' weekly variation showed that the same type of diurnal patterns occur for all the days of the week. NO early morning and late afternoon rush hour peaks are in general, much more pronounced Monday to Friday and overall levels are lower over the weekend.

The diurnal variation analyses viewed in the 'hour' plots in figure 4-3-1 showed typical urban area daily patterns for NO and NO<sub>2</sub>. Pronounced peaks can be seen for these pollutants during the morning, corresponding to rush hour traffic at around 07:00. However, at Halkett Place it is particularly early and sharp. This may be explained by the market at Halkett Place every day except Sundays. The peak coincides with the time at which the market traders arrive and set up for the day. In addition, a skip lorry arrives at this time to collect the previous day's refuse. It is believed vehicle emissions from these activities are responsible for the distinctive morning pattern at Halkett Place. Concentrations tend to decrease during the middle of the day, with a much broader evening road traffic rush-hour peak, building up from early afternoon.

Halkett Place does not exhibit a substantial afternoon or evening rush hour peak (as observed at many roadside AURN sites). This is unusual for an urban site. In the afternoon, concentrations of oxidising



agents in the atmosphere (particularly ozone) tend to increase, leading to enhanced oxidation of NO to NO<sub>2</sub>. This typically causes the afternoon NO<sub>2</sub> peak at many urban sites to be higher than the morning NO<sub>2</sub> peak. However, this is not the case at Halkett Place. The likely reason is that there is little afternoon rush hour traffic in this area. Most traffic is associated with the market and shoppers, occurring during the morning, afternoons are relatively quiet.

### 4.3.2 Source investigation

In order to investigate the possible sources of air pollution being monitored around Halkett Place, meteorological data measured at Jersey airport was used to add a directional component to the air pollutant concentrations. Wind speed and direction data was gathered using data from the National Oceanic and Atmospheric Administration (NOAA) meteorological database.

Figure 4-3-2 shows the measured wind speed and direction data. The lengths of the “spokes” against the concentric circles indicate the percentage of time during the year that the wind was measured from each direction. The prevailing wind can be seen to be from the west. Each “spoke” is divided into coloured sections representing wind speed intervals of 2 ms<sup>-1</sup> as shown by the scale bar in the plot. The mean wind speed was 5.75 ms<sup>-1</sup>. The maximum measured wind speed was 22.6 ms<sup>-1</sup>. The top 10 highest wind speeds were recorded during February, March and December 2016.

**Figure 4-3-2: Wind rose showing the wind speeds and directions at Jersey airport**

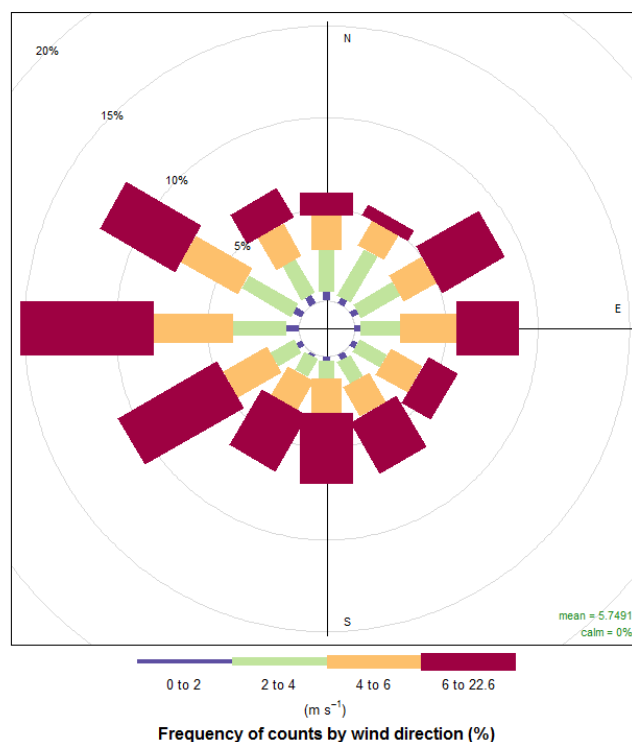


Figure 4-3-3 and Figure 4-3-4 show bivariate plots of hourly mean concentrations of NO and NO<sub>2</sub> at Halkett Place against wind speed and wind direction.

These plots should be interpreted as follows:

- The wind speed is indicated by the distance from the centre of the plot; the grey circles indicate wind speeds in 2 ms<sup>-1</sup> intervals.
- The pollutant concentration is indicated by the colour (as indicated by the scale).

These plots therefore show how pollutant concentrations varied with wind direction and wind speed.

The plots do not show distance of pollutant emission sources from the monitoring site. However, in the case of primary pollutants such as NO, the concentrations at very low wind speeds are dominated by emission sources close by, while at higher wind speeds, effects are seen from sources further away.

Figure 4-3-3: Pollution rose for NO at Halkett Place

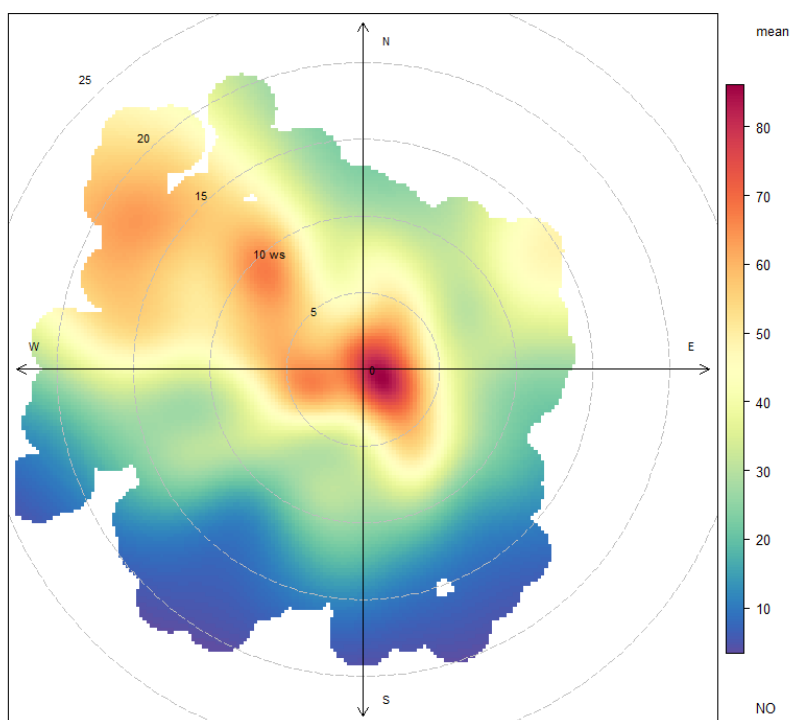
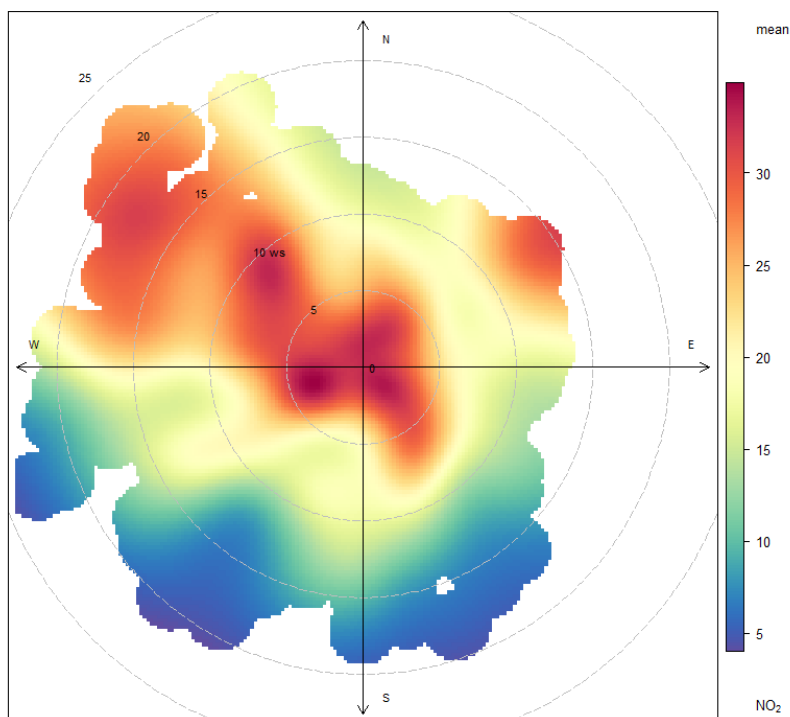


Figure 4-3-4: Pollution rose for NO2 at Halkett Place



Figures 4-3-3 and 4-3-4 show that the highest concentrations of NO occurred under calm and light wind conditions. Such conditions will have allowed NO and NO<sub>2</sub> emitted from nearby sources (vehicles on the surrounding streets) to build up, reaching higher concentrations. There were also moderate to high concentrations of both pollutants seen under windier conditions from the North West. This is the general direction of the A9 and A2 main roads and the majority of the developed areas from the monitoring site which would account for the increased concentrations. There is also a possible street canyon effect

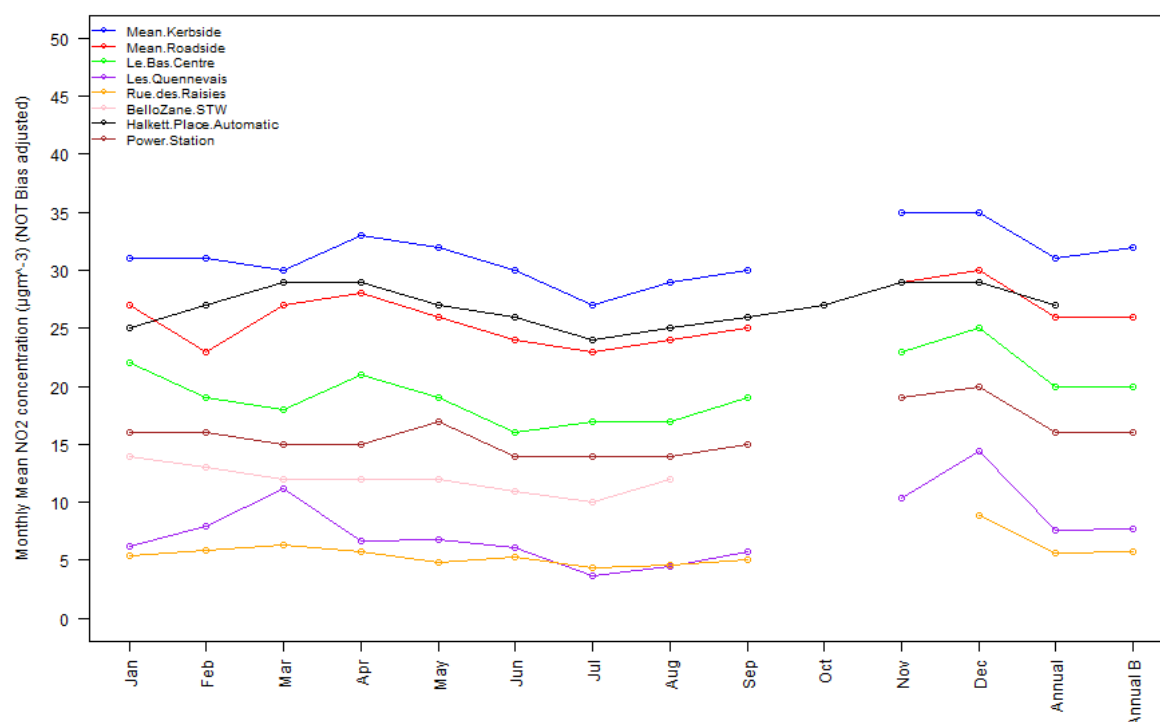
which would allow concentrations of pollutants to build up when prevailing wind from the NW blows across the top of the buildings rather than along Halkett Place in its roughly NNE-SSW orientation.

### 4.3.3 Seasonal Variation in NO<sub>2</sub> Concentration

Figure 4-4 shows the monthly mean NO<sub>2</sub> concentrations measured at the diffusion tube sites and Halkett Place. Including:

- The mean of the five kerbside sites.
- The mean of the four roadside sites.
- The monthly means measured at:
  - The single urban background site (Le Bas Centre).
  - The suburban residential site (Les Quennevais).
  - The rural site (Rue des Raisies).
  - The Sewage Treatment Works (Bellozane 1-3).
  - The Power Station sites (La Collette Gardens, South Hill Fort Regent and South Hill Park).
- The monthly means (based on the same periods as the diffusion tube exposures) for the Halkett Place automatic site.

**Figure 4-4: Monthly mean NO<sub>2</sub> concentrations (NOT bias adjusted) at diffusion tube sites and Halkett Place**



The typical pattern in UK urban areas is for NO<sub>2</sub> concentrations to be generally higher in the winter and lower in the summer. Historically, the sites in Jersey have not shown this, or indeed any, consistent seasonal pattern. However, in 2016, urban concentrations were slightly higher towards the end of the winter and beginning of spring. The highest monthly means for all sets of sites were recorded in December. This was also the case for the automatic analyser.

#### 4.3.4 Comparison with UK NO<sub>2</sub> data

Table 4–3 compares the annual NO<sub>2</sub> concentration measured at Halkett Place with those measured at a selection of UK air quality monitoring stations in the national Automatic Urban and Rural Network using automatic (chemiluminescent) NO<sub>2</sub> analysers. The AURN automatic data from the final three months of 2016 have not been fully ratified at the time of writing, so the annual means below are based on data that are partly still provisional. The sites used for comparison are listed below:

- Brighton Preston Park – an urban background site in Brighton, Sussex
- Exeter Roadside – a roadside site in the centre of Exeter, Devon
- Plymouth Centre – an urban centre site in the coastal city of Plymouth, Devon
- Yarner Wood – a rural moorland site in Devon.

**Table 4–3: Comparison of NO<sub>2</sub> in Jersey with UK automatic sites**

| Site                             | 2016 Annual mean NO <sub>2</sub> concentration $\mu\text{g m}^{-3}$ |
|----------------------------------|---|
| Brighton Preston Park            | 17  |
| Exeter Roadside                  | 30  |
| Plymouth Centre                  | 22  |
| Yarner Wood                      | 4   |
| Jersey Halkett Place (automatic) | 27  |

After bias adjustment, the annual mean NO<sub>2</sub> concentrations measured at the kerbside and roadside sites in Jersey (rounded to the nearest integer) ranged from 25 to 35  $\mu\text{g m}^{-3}$  and are comparable with the annual means at Exeter Roadside and Plymouth Centre (30  $\mu\text{g m}^{-3}$  and 22  $\mu\text{g m}^{-3}$  respectively). The mean concentration measured at Exeter Roadside is comparable with the annual mean of 27  $\mu\text{g m}^{-3}$  as measured by the automatic analyser at Halkett Place. The Jersey urban background site at Le Bas Centre had a (bias adjusted) annual mean NO<sub>2</sub> concentration of 20  $\mu\text{g m}^{-3}$ , slightly lower than the annual mean from the urban background site at Plymouth Centre. The residential background site at Les Quennevais had a bias-adjusted annual mean NO<sub>2</sub> concentration of 7.7  $\mu\text{g m}^{-3}$ : this is a higher than the rural Yarner Wood site in Devon. The bias-adjusted annual mean of 5.7  $\mu\text{g m}^{-3}$  at the Jersey rural background site, Rue des Raisies was also higher than that measured remote Yarner Wood site.

#### 4.3.5 Trends in NO<sub>2</sub> at Long-running Sites

There are 10 sites in the survey which have been in operation since 2005 or earlier and therefore now have 12 years of data. The annual mean NO<sub>2</sub> concentrations are shown in Table 4–4 and illustrated in Figure 4-5. The data is not adjusted for diffusion tube bias as there was no reliable information on which to carry out bias adjustment prior to 2002. Therefore, for consistency, unadjusted data is used in this section.

Annual mean NO<sub>2</sub> concentrations at the kerbside, roadside and urban background sites (Weighbridge, Georgetown, Beaumont, the Parade, Broad Street, and Le Bas) gave cause for concern in the early years of the study (2000 to 2003). Several exceeded the EC Directive limit value of 40  $\mu\text{g m}^{-3}$ , and there were no sign of concentrations decreasing. From 2004 onwards, concentrations began to decrease. In 2016, (after application of the bias adjustment factor), all sites remained below 40  $\mu\text{g m}^{-3}$ .

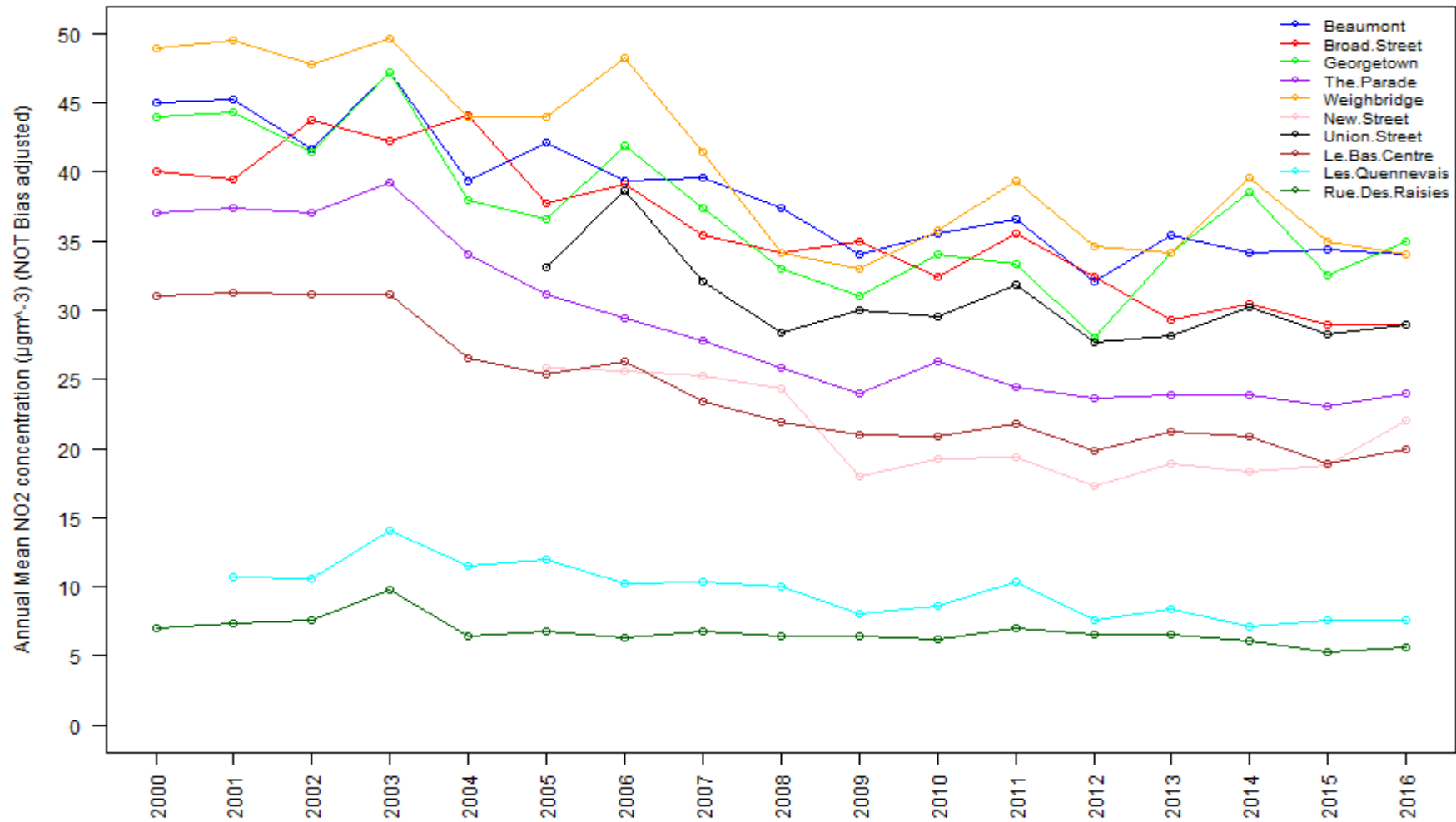
Figure 4-5 illustrates how the annual mean concentrations remained stable from 2000 to 2003. This was followed by a period when NO<sub>2</sub> concentrations at the urban sites appeared to show a general decrease, until around 2012. However, since then, annual mean NO<sub>2</sub> concentrations at several of the sites have remained stable with typical fluctuations from year to year due to meteorological and other factors.

**Table 4–4: Annual mean NO<sub>2</sub> concentrations at the diffusion tube sites, µg m<sup>-3</sup> (NOT bias adjusted)**

| Site                 | 2000 | 2001 | 2002 | 2003 | 2004 | 2005 | 2006 | 2007 | 2008 | 2009 | 2010 | 2011 | 2012 | 2013 | 2014 | 2015 | 2016 |
|----------------------|------|------|------|------|------|------|------|------|------|------|------|------|------|------|------|------|------|
| Beaumont (K)         | 45   | 45   | 42   | 47   | 39   | 42   | 39   | 40   | 37   | 34   | 36   | 37   | 32   | 35   | 34   | 34   | 34   |
| Broad Street (K)     | 40   | 39   | 44   | 42   | 44   | 38   | 39   | 35   | 34   | 35   | 32   | 36   | 32   | 29   | 30   | 29   | 29   |
| Georgetown (K)       | 44   | 44   | 41   | 47   | 38   | 37   | 42   | 37   | 33   | 31   | 34   | 33   | 28   | 34   | 39   | 32   | 35   |
| The Parade (K)       | 37   | 37   | 37   | 39   | 34   | 31   | 29   | 28   | 26   | 24   | 26   | 24   | 24   | 24   | 24   | 23   | 24   |
| Weighbridge (K)      | 49   | 49   | 48   | 50   | 44   | 44   | 48   | 41   | 34   | 33   | 36   | 39   | 35   | 34   | 40   | 35   | 34   |
| New Street (R)       | -    | -    | -    | -    | -    | 26   | 26   | 25   | 24   | 18   | 19   | 19   | 17   | 19   | 18   | 19   | 22   |
| Union Street (R)     | -    | -    | -    | -    | -    | 33   | 39   | 32   | 28   | 30   | 30   | 32   | 28   | 28   | 30   | 28   | 29   |
| Le Bas Centre (UB)   | 31   | 31   | 31   | 31   | 27   | 25   | 26   | 23   | 22   | 21   | 21   | 22   | 20   | 21   | 21   | 19   | 20   |
| Les Quennevais (S)   | -    | 11   | 11   | 14   | 12   | 12   | 10   | 10.3 | 10.1 | 8.0  | 8.7  | 10.4 | 7.6  | 8.4  | 7.1  | 8    | 7.6  |
| Rue Des Raisies (Ru) | 7    | 7    | 8    | 10   | 6    | 7    | 6    | 6.8  | 6.5  | 6.4  | 6.2  | 7.0  | 6.6  | 6.6  | 6.1  | 5    | 5.6  |

K = kerbside, R = roadside, UB = urban background, S = suburban, Ru = rural

Figure 4-5: Annual mean NO<sub>2</sub> concentrations (NOT adjusted for diffusion tube bias)



## 4.4 Hydrocarbons

Full monthly results of the hydrocarbon survey for the five BTEX sites and a summary of the annual average hydrocarbon concentrations are shown in Appendix 4. Travel blank values are included in Appendix 4. These gave consistently lower results than the exposed tubes.

The following BTEX tube results were disregarded from this reports analysis due to invalidated results:

- Airport Fence, April, analyser flame extinguished and relit at start of run giving an odd chromatogram and results below the limit of detection,
- Le Bas Centre, Hansford Lane and Faux Bie Terrace, October, End cap on the returned tube came off,
- Le Bas Centre, Airport Fence, Hansford Lane and Faux Bie Terrace, November, End cap on the returned tube came off,
- Airport Fence, December, End cap on the returned tube came off.

There were numerous instances throughout the year when the reported results were less than the limit of detection, especially for ethylbenzene, and o-xylene. Where this was the case, the value was treated as equal to the half limit of detection for the purposes of calculating the annual mean.

**Table 4–5 Summary of average hydrocarbon concentrations ( $\mu\text{g m}^{-3}$ ), Jersey, 2016**

| Site                           | Benzene | Toluene | Ethylbenzene | m+p-xylene | o-xylene |
|--------------------------------|---------|---------|--------------|------------|----------|
| Le Bas Centre                  | 1       | 2.5     | 0.6          | 2.1        | 0.9      |
| Halkett Place (Central Market) | 0.9     | 2.9     | 0.8          | 2.3        | 1.0      |
| Airport Fence                  | 0.5     | 1.3     | 0.3          | 0.7        | 0.3      |
| Hansford Lane*                 |         |         |              |            |          |
| Faux Bie Terrace               | 1.9     | 12      | 1.9          | 6.4        | 2.6      |
| Travel blank                   | 0.1     | 0.1     | 0            | 0.1        | 0.1      |

\* The annual mean is not included for this site as there are less than nine months of BTEX diffusion tube monitoring results and in accordance with the procedure described in TG(16)<sup>6</sup>, we are not able to annualise the data.

Highest annual mean concentrations of all the hydrocarbons in 2016 were measured at Faux Bie, which is between a petrol station and the nearest housing to it (12m from flats). It is likely that the evaporation of benzene and toluene in particular, from fuel as it is stored or dispensed, is contributing to ambient levels.

There is a continuing trend at Faux Bie for the concentrations of all species to increase year on year, particularly since 2012 after decreasing for each of the previous four years of monitoring (2010-2012) at this location. The reasons for this cannot be determined from the results alone and may be due to numerous factors relating to the fuel filling station (its infrastructure and usage), meteorological conditions and other layouts and usage of space in the area surrounding the tube location. Further investigation into the filling station usage and monitoring location infrastructure would be required to more accurately assess the cause of the increase if concentrations should the trend continue long term and if deemed necessary. It is important to note that, despite the increase in concentrations the annual mean of  $1.9 \mu\text{g m}^{-3}$  for Benzene is still well below the annual limit value of  $5 \mu\text{g m}^{-3}$ .

The Hansford Lane site (near a paint spraying process) has in the past measured relatively high concentrations of m+p-xylene and o-xylene while not thought to be a significant source of benzene or toluene. However, in 2016 due to the number of times the caps fell off the tubes we are unable to present an annual average. Graphical representations of monthly mean hydrocarbon concentrations are shown in Figure 4-6 to Figure 4 10.

Figure 4-6: Monthly mean hydrocarbon concentrations at Le Bas Centre, 2016

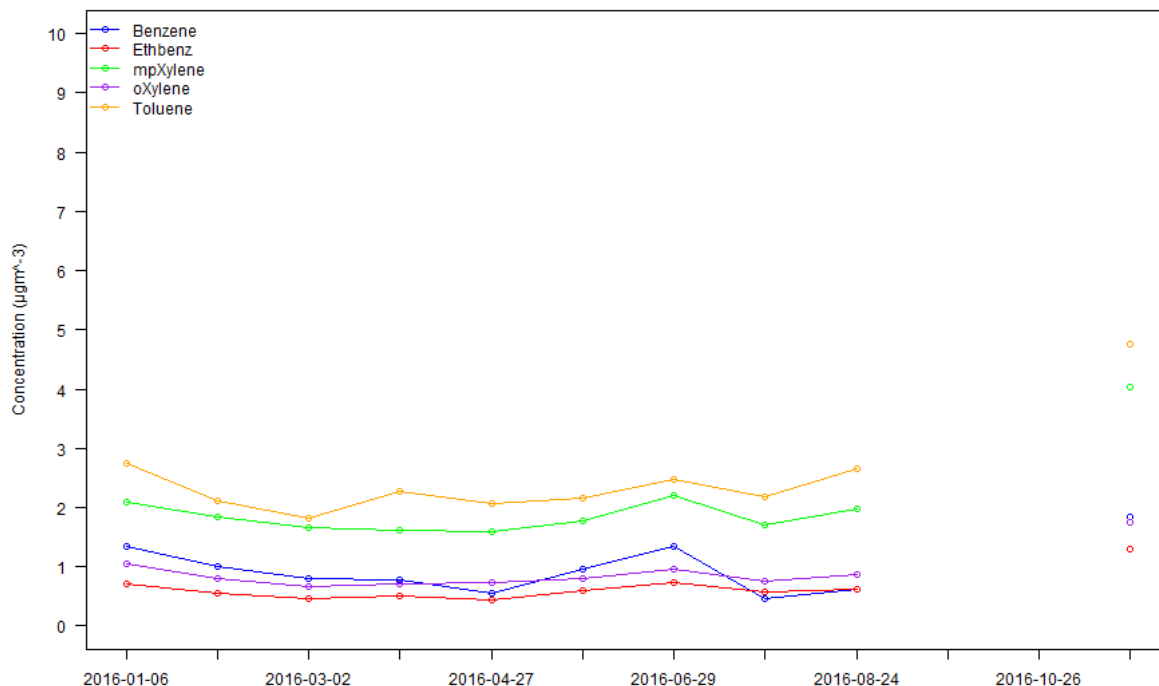


Figure 4-7 Monthly mean hydrocarbon concentrations at Halkett Place, 2016

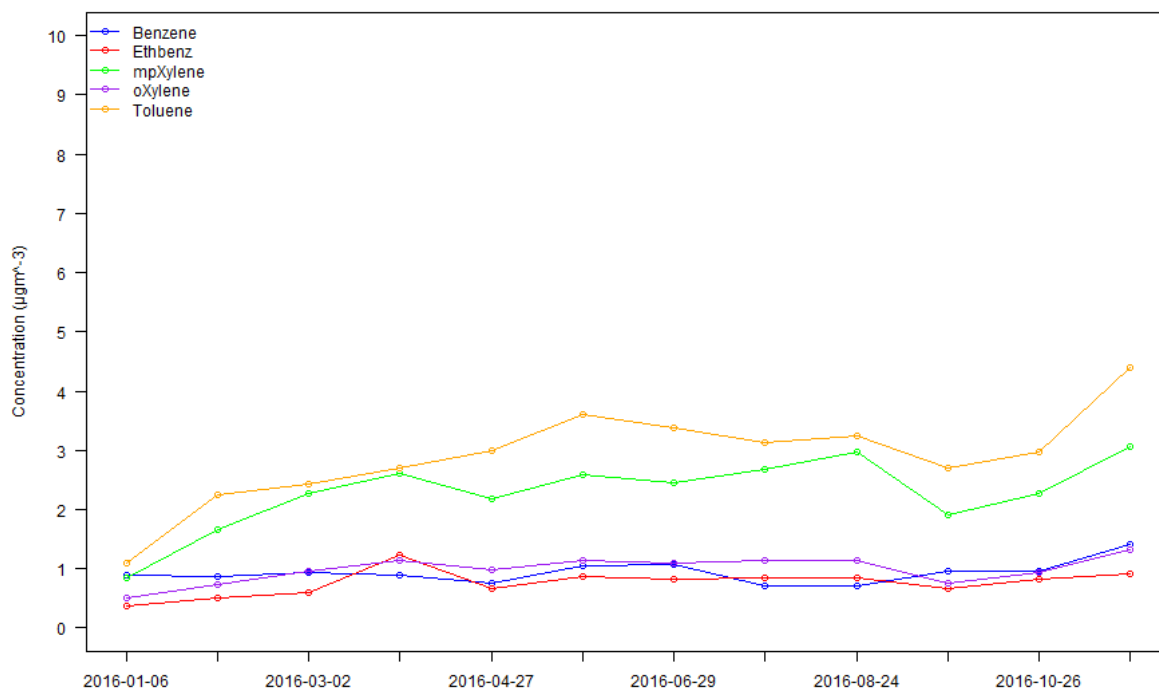




Figure 4-8: Monthly mean hydrocarbon concentrations at Airport Fence, 2016

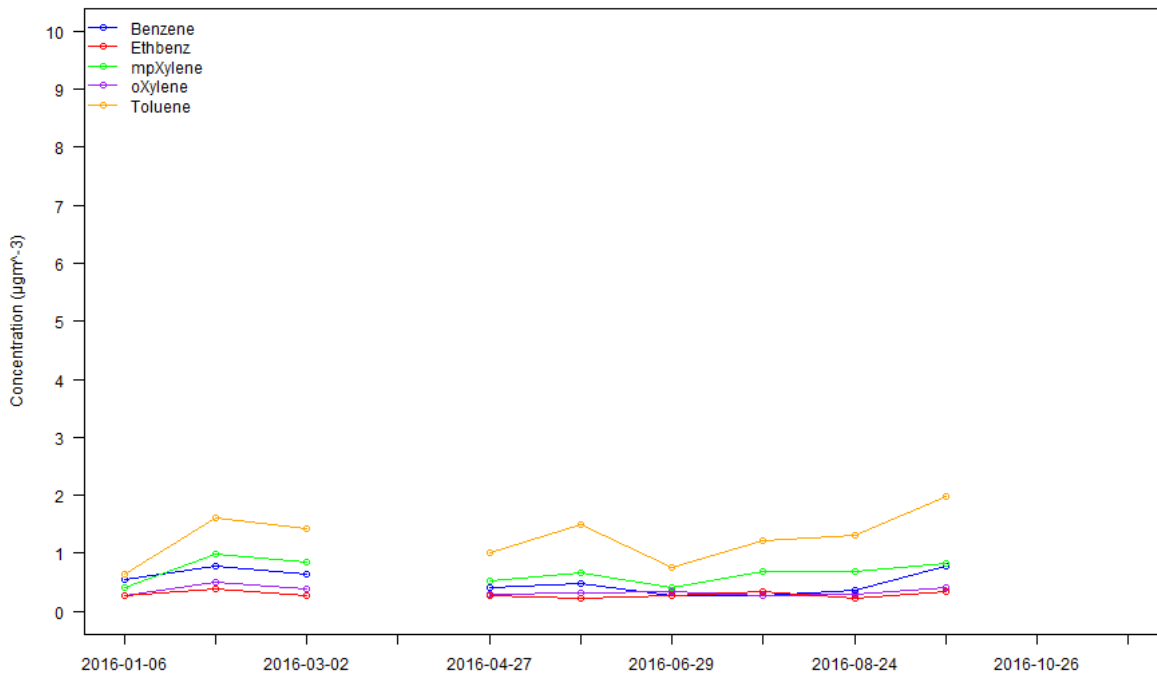
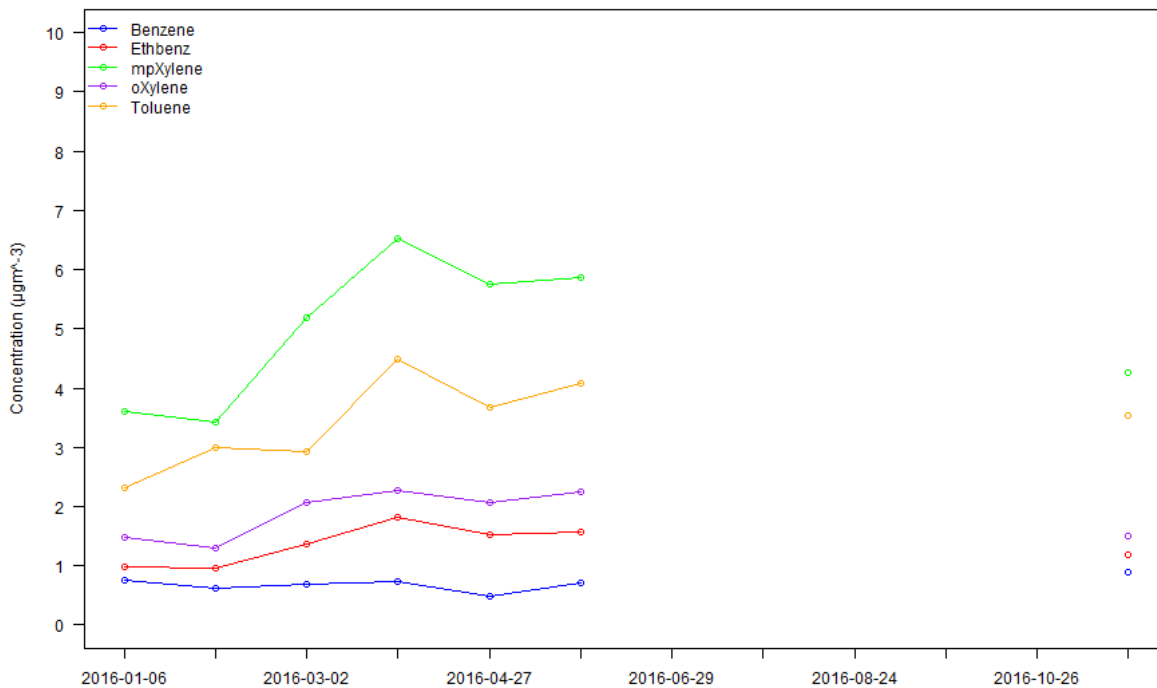
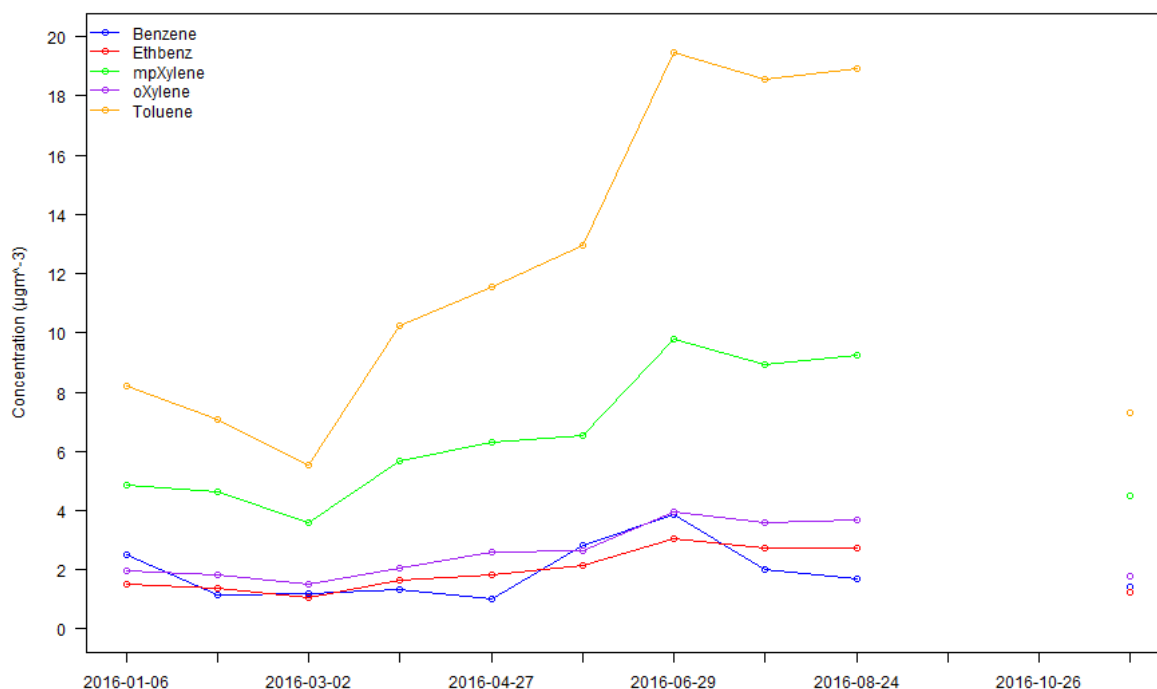


Figure 4-9: Monthly mean hydrocarbon concentrations at Hansford Lane, 2016



**Figure 4-10: Monthly mean hydrocarbon concentrations at Faux Bie, 2016**

The charts clearly show the differences in hydrocarbon concentrations between each location. The Airport Fence site recorded the lowest concentrations of all the BTEX hydrocarbons, frequently below the detection limit except for toluene.

#### 4.4.1 Comparison with Limit Values and Objectives

Of the hydrocarbon species monitored, only benzene is the subject of any applicable air quality standards. The Air Quality Directive<sup>4</sup> sets a limit of  $5 \mu\text{g m}^{-3}$  for the annual mean of benzene, to be achieved by 2010. All sites met this limit in 2016, and have done so since 1999 (or since they started operation).

The UK Air Quality Strategy<sup>5</sup> sets the following objectives for benzene:

- $16.25 \mu\text{g m}^{-3}$  (for the running annual mean), to have been achieved by 31<sup>st</sup> December 2003.
- $5 \mu\text{g m}^{-3}$  (for the calendar year mean), to have been achieved by 31<sup>st</sup> December 2010 in England and Wales. This is the same as the EC limit value.
- $3.25 \mu\text{g m}^{-3}$  (for the calendar year mean), to have been achieved by 31<sup>st</sup> December 2010 in Scotland and Northern Ireland.

These AQS objectives are not at present mandatory in Jersey.

The annual mean benzene concentration (which can be considered a good indicator of the running annual mean) was well within the 2003 objective of  $16.25 \mu\text{g m}^{-3}$  at all the Jersey sites. The calendar year mean benzene concentration was below  $3.25 \mu\text{g m}^{-3}$  at all Jersey sites. Therefore, these sites meet the tightest AQS objectives for benzene (those applying to Scotland and Northern Ireland).

#### 4.4.2 Comparison with Previous Years' Hydrocarbon Results

Figure 4-11 to Figure 4-15 show how the annual mean hydrocarbon concentrations at the five Jersey sites have changed over the years of monitoring. The data is also provided in tabular form in Appendix 4.

It is important to remember that pollutant concentrations are expected to show considerable year-to-year variation, due to meteorological and other factors. Year-to-year changes are therefore of less importance than the observation of long-term trends, which are discussed below.

Figure 4-11: Time series of benzene concentrations

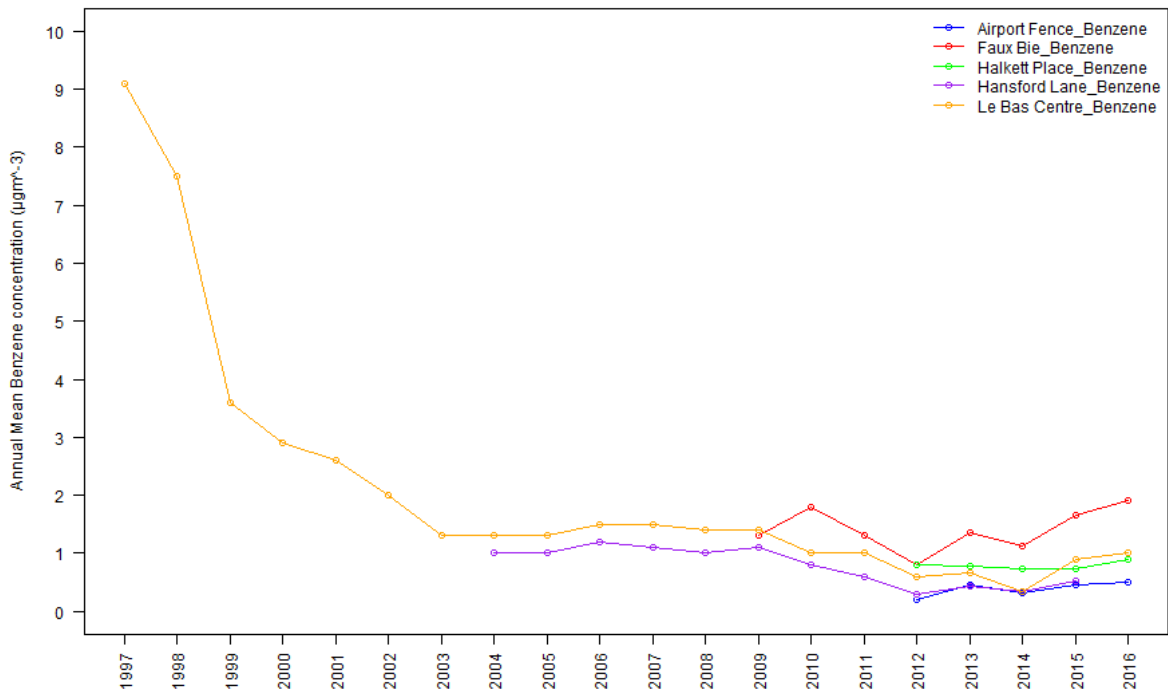


Figure 4-11 shows the annual mean benzene concentrations. The EU limit value is  $5 \mu\text{g m}^{-3}$  and the Typical LoD as concentration equivalent is  $0.097 \mu\text{g m}^{-3}$ . Le Bas Centre has been in operation since 1997 and the annual mean concentrations of benzene show a marked drop over the years running to the year 2000 due to the maximum permitted benzene content of petrol sold in the UK being reduced from 2% in unleaded (5% in super unleaded), to 1% as of 1<sup>st</sup> January 2000. This site has shown a further modest decrease between 2009 and 2012, as has Hansford Lane. Annual mean concentrations at all sites except Faux Bie were lower than  $1 \mu\text{g m}^{-3}$ .

Figure 4-12: Time series of toluene concentrations

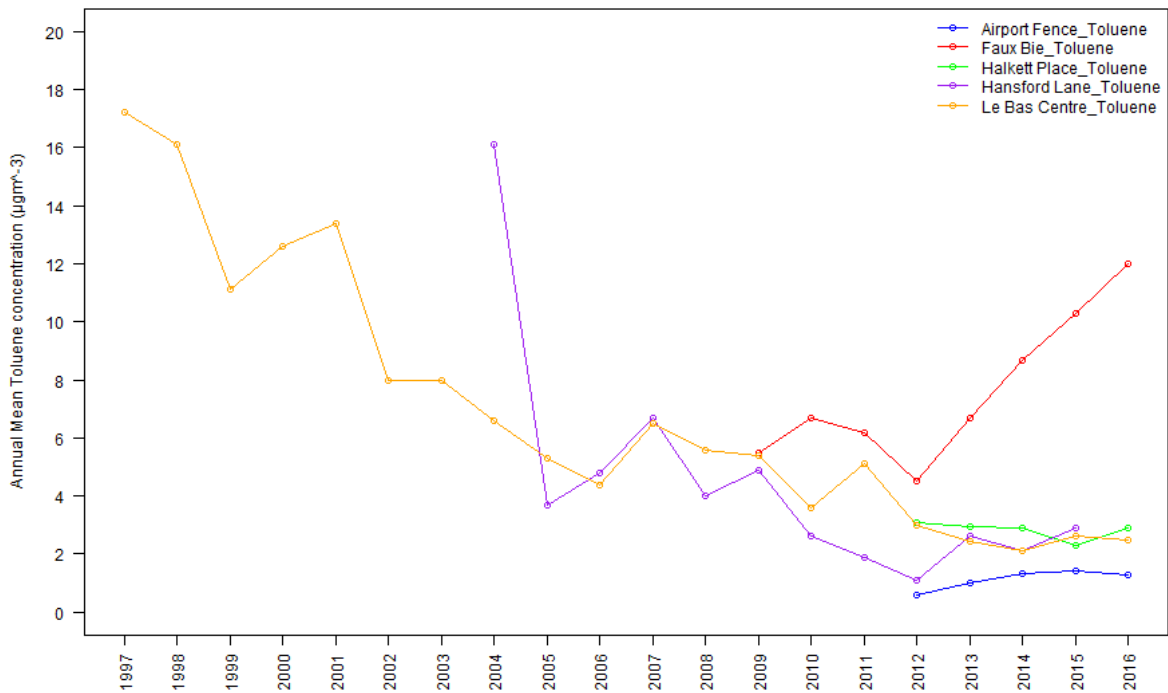
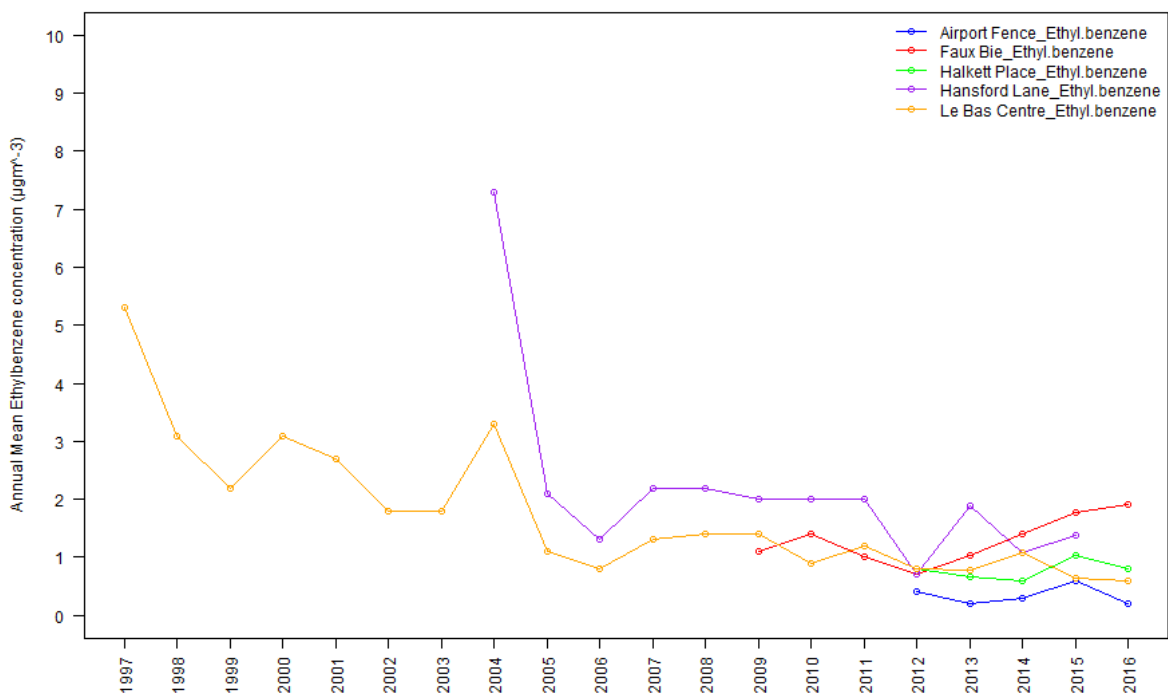


Figure 4-12 shows toluene concentrations. The ambient concentration equivalent to the typical LoD for toluene is  $0.068 \mu\text{g m}^{-3}$ . The two longest-running sites, Le Bas Centre and Hansford Lane, show general decreases over the past ten years, though these are not consistent. All sites have had relatively stable yearly averages since 2012 with the exception of concentrations at the Faux Bie site which have increased year on year.

Figure 4-13: Time series of ethylbenzene concentrations



The pattern for ethylbenzene, Figure 4-13, is similar to the toluene time series, Figure 4-12 with Le Bas Centre and Hansford showing general decreases and all sites bar Faux Bie showing relatively stable annual averages since 2012.

Figure 4-14 Time series of m+p-xylene concentrations

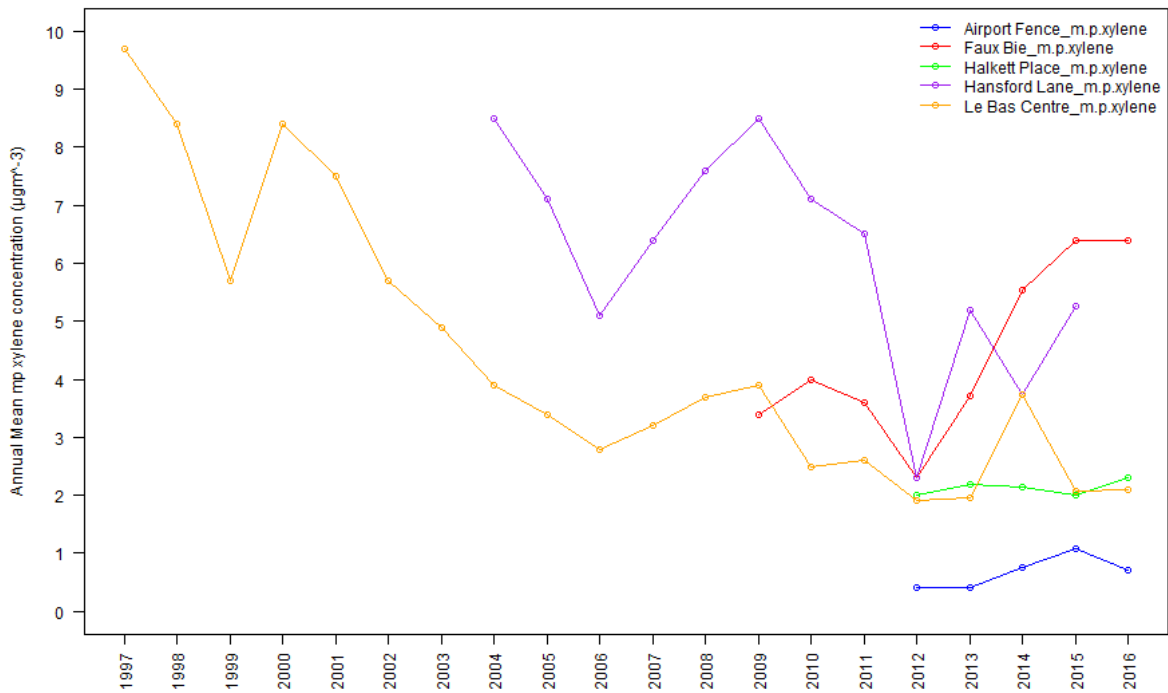
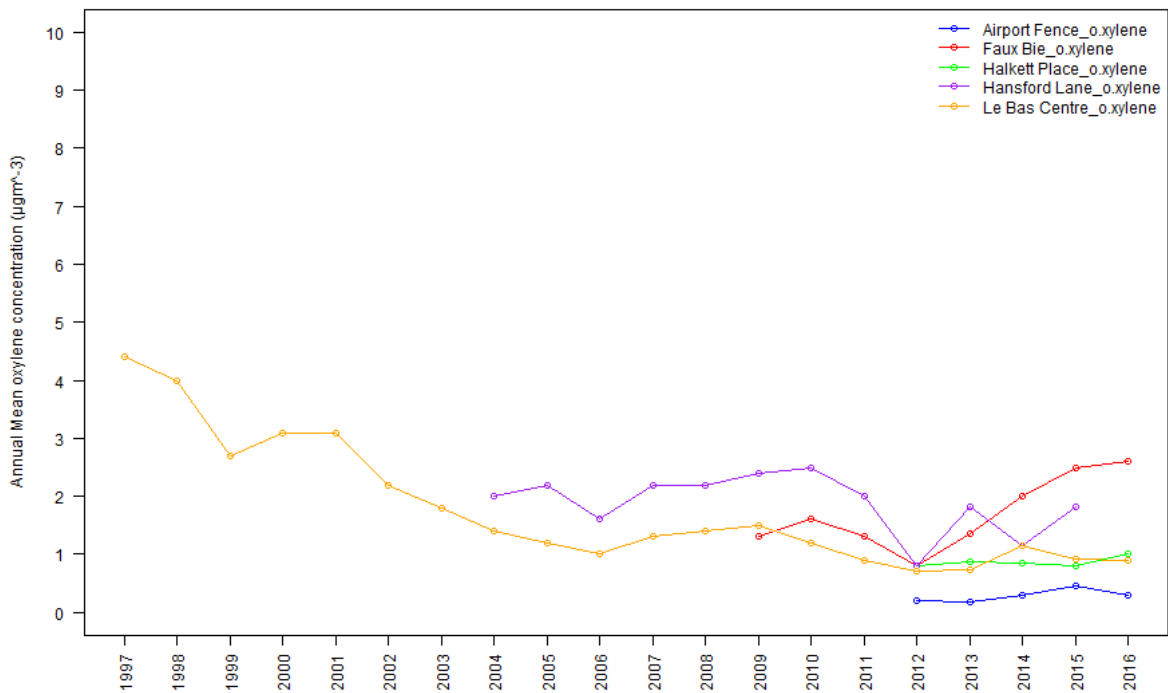


Figure 4-15 Time series of o-xylene concentrations



Concentrations of xylenes (Figure 4-14 and Figure 4-15) have generally decreased since monitoring began with the exception of Faux Bie which has seen a steady increase since 2012, though this looks to have plateaued. At Hansford Lane (near the paint spraying process), concentrations of m+p-xylene

---

and of o-xylene have fluctuated considerably from year to year; however, overall concentrations are low.

It is also important to note how low current hydrocarbon concentrations are, compared to the LoD equivalent concentration (in 2016, typically around  $0.21 \mu\text{g m}^{-3}$  for benzene,  $0.22 \mu\text{g m}^{-3}$  for toluene and  $0.27 \mu\text{g m}^{-3}$  for the other hydrocarbons).

## 5 Conclusions and Recommendations

Ricardo Energy & Environment has continued the ongoing air quality monitoring programme in Jersey during 2016, on behalf of the States of Jersey Environmental Health Services. This was the 20<sup>th</sup> year of monitoring. Oxides of nitrogen were monitored at one automatic monitoring station, located in a roadside position at the Central Market, Halkett Place in St Helier. Diffusion tubes were also co-located (in triplicate) with the automatic site at Halkett Place. This was supplemented by diffusion tubes for indicative monitoring of NO<sub>2</sub> at an additional 21 sites around the island.

Hydrocarbons (benzene, toluene, ethylbenzene and xylenes, collectively termed BTEX) were measured at five sites, using diffusion tubes. The sites were located at a range of different locations on the island, one of which has been in operation since 1997.

### 5.1 NO<sub>2</sub> Results

1. The annual mean NO<sub>2</sub> concentration measured by the automatic analyser at Halkett Place was 27 µg m<sup>-3</sup>. This is within the EC Directive limit value and AQS objective of 40 µg m<sup>-3</sup> for annual mean NO<sub>2</sub>. Having achieved compliance by 2010 as required, the States of Jersey must continue to demonstrate ongoing compliance.
2. The EC Directive limit value (and AQS objective) for 1-hour mean NO<sub>2</sub> concentration is 200 µg m<sup>-3</sup>, with 18 exceedances permitted per calendar year. There were no hourly means greater than this value measured at Halkett Place. Therefore Halkett Place met the limit value and objective.
3. Diffusion tubes exposed in triplicate alongside the automatic analyser gave an annual mean of 25 µg m<sup>-3</sup>, which was within 2 µg m<sup>-3</sup> of the annual mean as measured by the automatic analyser.
4. Annual mean NO<sub>2</sub> concentrations at all diffusion tube monitoring sites were within the EC limit value.
5. The diurnal variation in oxide concentrations of nitrogen at Halkett Place were generally typical of an urban site, but had a particularly early (and sharp) morning rush hour peak, with a slight afternoon rush hour peak. This is thought to be due to traffic patterns around the site; this being early morning traffic associated with the market and with waste collection from the previous day.
6. Monthly mean NO<sub>2</sub> concentrations at the diffusion tube sites did not show a typical seasonal pattern; on average the highest concentrations in 2016 were measured in December.
7. Annual mean NO<sub>2</sub> concentrations at Jersey's urban sites appear to have generally decreased between 2003 and 2012: since then, concentrations have remained generally stable at most sites.
8. Annual mean NO<sub>2</sub> concentrations at a number of Jersey's diffusion tube monitoring sites were slightly lower in 2016 compared with 2015. Pollutant concentrations are expected to fluctuate from year to year, due to meteorological and other factors.

### 5.2 Hydrocarbon Diffusion Tube Results

1. No annual mean for any species at Hansford Place was achieved due to there being less than 9 months data available.
2. Annual mean benzene concentrations at all four sites with annual averages were within the EC Directive limit value of 5 µg m<sup>-3</sup>. Having achieved compliance by 2010 as required, the States of Jersey must continue to demonstrate ongoing compliance.
3. The Airport Fence site recorded the lowest concentrations of all the BTEX hydrocarbons, and several results were below the limit of detection of the method.
4. Annual mean concentrations of BTEX hydrocarbons were comparable with those measured in recent years, though in most cases slightly higher than in 2015.



---

## 5.3 Recommendations

It is recommended that the monitoring programme be continued; consideration should be given to aligning the monitoring programme with the requirements of Jersey's Air Quality Strategy.

Measured concentrations of BTEX hydrocarbons at most of the sites were very low, and in some cases typically below the limit of detection. The results should therefore only be taken as indicative measurements, for the purpose of confirming that benzene concentrations at the sites are within relevant limit values. However, if accurate measurement of hydrocarbons are required, it may be appropriate to consider installation of pumped-tube sampling at key sites, as used at UK mainland Non-Automatic Hydrocarbon Network sites.

Due to the persistent loss of data from the Hansford Place site, it is recommended that, if BTEX diffusion tube measurements are to continue, the site should be relocated to a suitable nearby position where the risk of the tube going missing is reduced.

## 6 Acknowledgements

Ricardo Energy & Environment gratefully acknowledges the help and support of the staff of the States of Jersey Environmental Health Services in this monitoring study.

## 7 References

1. "Air Quality Monitoring in Jersey" series of annual reports prepared by Ricardo Energy & Environment for the States of Jersey, covering years 1997 to 2015. For details please contact Ricardo Energy & Environment.
2. Health and Safety Executive. 1997. Occupational Exposure Limits – Guidance booklets EH40/97. HMSO, London, UK. ISBN 0-7176-1315-1.
3. Air Quality Guidelines for Europe (2nd Edition), WHO, Copenhagen 2000, ISBN 92 890 1358 3. Available online from [http://www.euro.who.int/\\_data/assets/pdf\\_file/0005/74732/E71922.pdf](http://www.euro.who.int/_data/assets/pdf_file/0005/74732/E71922.pdf).
4. Council Directive 2008/50/EC of the European Parliament and of the Council of 21<sup>st</sup> May 2008, on ambient air quality and cleaner air for Europe. Available online from <http://ec.europa.eu/environment/air/quality/legislation/directive.htm>.
5. The Air Quality Strategy for England, Scotland, Wales and Northern Ireland. March 2011. Available at [https://www.gov.uk/government/uploads/system/uploads/attachment\\_data/file/69336/pb12654-air-quality-strategy-vol1-070712.pdf](https://www.gov.uk/government/uploads/system/uploads/attachment_data/file/69336/pb12654-air-quality-strategy-vol1-070712.pdf)
6. Part IV of the Environment Act 1995. Local Air Quality Management. Technical Guidance LAQM.TG(16) April 2016. Produced by Defra, available from <https://laqm.defra.gov.uk/documents/LAQM-TG16-April-16-v1.pdf>.
7. WHO Air Quality guidelines for Particulate matter, ozone, nitrogen dioxide and sulphur dioxide, Global update 2005. Available at [http://apps.who.int/iris/bitstream/10665/69477/1/WHO\\_SDE\\_PHE\\_OEH\\_06.02\\_eng.pdf](http://apps.who.int/iris/bitstream/10665/69477/1/WHO_SDE_PHE_OEH_06.02_eng.pdf)

## Appendices

Appendix 1: Air quality limit values, objectives and guidelines

Appendix 2: Calibration procedures for automatic analyser

Appendix 3: Nitrogen dioxide diffusion tubes: Bias adjustment factor

Appendix 4: BTEX diffusion tubes: Monthly dataset and annual means 1997 - 2016

# Appendix 1 - Air quality limit values, objectives and guidelines

## Air pollution guidelines used in this report

### UK and International Ambient Air Quality Limit Values, Objectives and Guidelines

Table A1- 1 Nitrogen Dioxide

| Guideline set by  | Description  | Criteria based on   | Value <sup>(1)</sup> /µg m <sup>-3</sup> (ppb)                        |
|---|--|---|---|
| The Air Quality Strategy <sup>(2)</sup>                                       | Objective for Dec. 31 <sup>st</sup> 2005, for protection of human health   | 1-hour mean   | 200 (105)<br>Not to be exceeded more than 18 times per calendar year. |
| Set in regulations <sup>(3)</sup> for all UK:                                 | Objective for Dec. 31 <sup>st</sup> 2005, for protection of human health   | Annual mean   | 40 (21)   |
| Not intended to be set in regulations:  | Objective for Dec. 31 <sup>st</sup> 2000, for protection of vegetation.  | Annual mean NO <sub>x</sub> (NO <sub>x</sub> as NO <sub>2</sub> ) | 30 (16)   |
| ED Directive on Ambient Air Quality and Cleaner Air for Europe <sup>(4)</sup> | Limit Value<br>for protection of human health. To be achieved by Jan. 1 <sup>st</sup> 2010                         | 1 hour mean   | 200 (105)<br>not to be exceeded more than 18 times per calendar year  |
|   | Limit Value<br>for protection of human health. To be achieved by Jan. 1 <sup>st</sup> 2010                         | Calendar year mean  | 40 (21)   |
|   | Limit Value (total NO <sub>x</sub> )<br>for protection of vegetation. To be achieved by Jul. 19 <sup>th</sup> 2001 | Calendar year mean  | 30 (16)   |
| World Health Organisation <sup>(5)</sup><br><br>(Non-Mandatory Guidelines)    | Health Guideline   | 1-hour mean   | 200   |
|   | Health Guideline   | Annual mean   | 40  |

<sup>1</sup> Conversions between µg m<sup>-3</sup> and ppb are as used by the EC, ie 1 ppb NO<sub>2</sub> = 1.91 µg m<sup>-3</sup> at 20 °C and 1013 mB.

<sup>2</sup> The Air Quality Strategy for England, Scotland, Wales and Northern Ireland. March 2011.

<sup>3</sup> Air Quality Regulations 2007 (SI 2007/64), Air Quality Standards (Wales) Regulations 2007 (Welsh SI 2007 717 (W63)), Air Quality Standards (Scotland) Regulations 2007 (SSI 2007 No. 182), Air Quality Standards (Northern Ireland) Regulations 2007 (Statutory Rule 2007 No. 265).

<sup>4</sup> Council Directive 2008/50/EC.

<sup>5</sup> WHO Air Quality Guidelines for Europe (2000).

**Table A1- 2 Benzene**

| Guideline set by   | Description   | Criteria based on            | Value <sup>(6)</sup> /μg m <sup>-3</sup> (ppb) |
|--|---|------------------------------|--|
| The Air Quality Strategy <sup>(7,8)</sup><br>All UK                                  | Objective for Dec.<br>31 <sup>st</sup> 2003                   | Running annual<br>mean       | 16.25 (5)                                      |
| England <sup>(9)</sup> & Wales <sup>(10)</sup> only:                                 | Objective for Dec.<br>31 <sup>st</sup> 2010                   | Annual mean                  | 5 (1.54)                                       |
| Scotland <sup>(11)</sup> & Northern<br>Ireland                                       | Objective for Dec.<br>31 <sup>st</sup> 2010                   | Running annual<br>mean       | 3.25 (1.0)                                     |
| ED Directive on Ambient Air<br>Quality and Cleaner Air for<br>Europe <sup>(12)</sup> | Limit Value.<br>To be achieved<br>by Jan 1 <sup>st</sup> 2010 | Annual calendar<br>year mean | 5 (1.5)  |

**Table A1- 3 Toluene**

| Guideline set by   | Description      | Criteria based on | Value <sup>(1)</sup> /μg m <sup>-3</sup> (ppb)       |
|--|------------------|-------------------|--|
| World Health Organisation <sup>(13)</sup><br>(Non-Mandatory Guideline) | Health Guideline | 1-week mean       | 260 μg m <sup>-3</sup> or<br>0.26 mg m <sup>-3</sup> |

<sup>6</sup> Conversions between μg m<sup>-3</sup> and ppb are as used by the EC, ie 1 ppb NO<sub>2</sub> = 1.91 μg m<sup>-3</sup> at 20 °C and 1013 mB.

<sup>7</sup> The Air Quality Strategy for England, Scotland, Wales and Northern Ireland. July 2007, The Stationery Office, ID 5611194 07/07.

<sup>8</sup> Air Quality (England) Regulations 2000 (SI 2000/928), Air Quality (Scotland) Regulations 2000 (SSI 2000/97), Air Quality (Wales) Regulations 2000 (SI 2000/1940 (W138)).

<sup>9</sup> Air Quality (Amendment) (England) Regulations 2002 (SI 2002/3043).

<sup>10</sup> Air Quality (Amendment) (Wales) Regulations 2002 (SI 2002/3182 (W298)).

<sup>11</sup> Air Quality (Amendment) (Scotland) Regulations 2002 (SI 2002/297).

<sup>12</sup> Council Directive 2008/50/EC.

<sup>13</sup> WHO Air Quality Guidelines for Europe (2000).

---

## Appendix 2 - Calibration procedures for automatic analyser

The analyser at Halkett Place is calibrated monthly by the Environmental Health team. Standard gas calibration mixtures are used to check the instrument's span, and chemically scrubbed air is used to check the instrument's zero. All gas calibration standards used for routine analyser calibration are certified against traceable primary gas calibration standards from the Gas Standards Calibration Laboratory at Ricardo Energy & Environment. The calibration laboratory operates within a specific and documented quality system and has UKAS accreditation for calibration of the gas standards used in this survey.

An important aspect of QA/QC procedures is the annual intercalibration and audit check undertaken every 12 months. This audit has two principal functions, firstly to check the instrument and the site infrastructure, and secondly to recalibrate the transfer gas standards routinely used on-site, using standards recently checked in the calibration laboratory. Ricardo Energy & Environment's audit calibration procedures are UKAS accredited to ISO 17025.

At these visits, the essential functional parameters of the monitors, such as noise, linearity and, for the NO<sub>x</sub> monitor, the efficiency of the NO<sub>2</sub> to NO converter are fully tested. In addition, the on-site transfer calibration standards are checked and re-calibrated if necessary, the air intake sampling system is cleaned and checked and all other aspects of site infrastructure are checked. In 2016 this exercise was followed within one month by a full service of the analyser and sampler pump.

# Appendix 3 - Nitrogen dioxide diffusion tubes: Bias adjustment factor

The precision and accuracy of the diffusion tubes in this study were quantified by exposing them in triplicate alongside the automatic NO<sub>x</sub> analyser at Halkett Place. The percentage by which the diffusion tubes over- or under-estimate with respect to the automatic chemiluminescent analyser (defined within the European Community as the reference method for NO<sub>2</sub>) is calculated as follows.

$$\text{Percentage bias B} = 100 \times (D - C) / C$$

Where D = the average NO<sub>2</sub> concentration as measured using diffusion tubes; and

C = the average NO<sub>2</sub> concentration as measured using the automatic analyser.

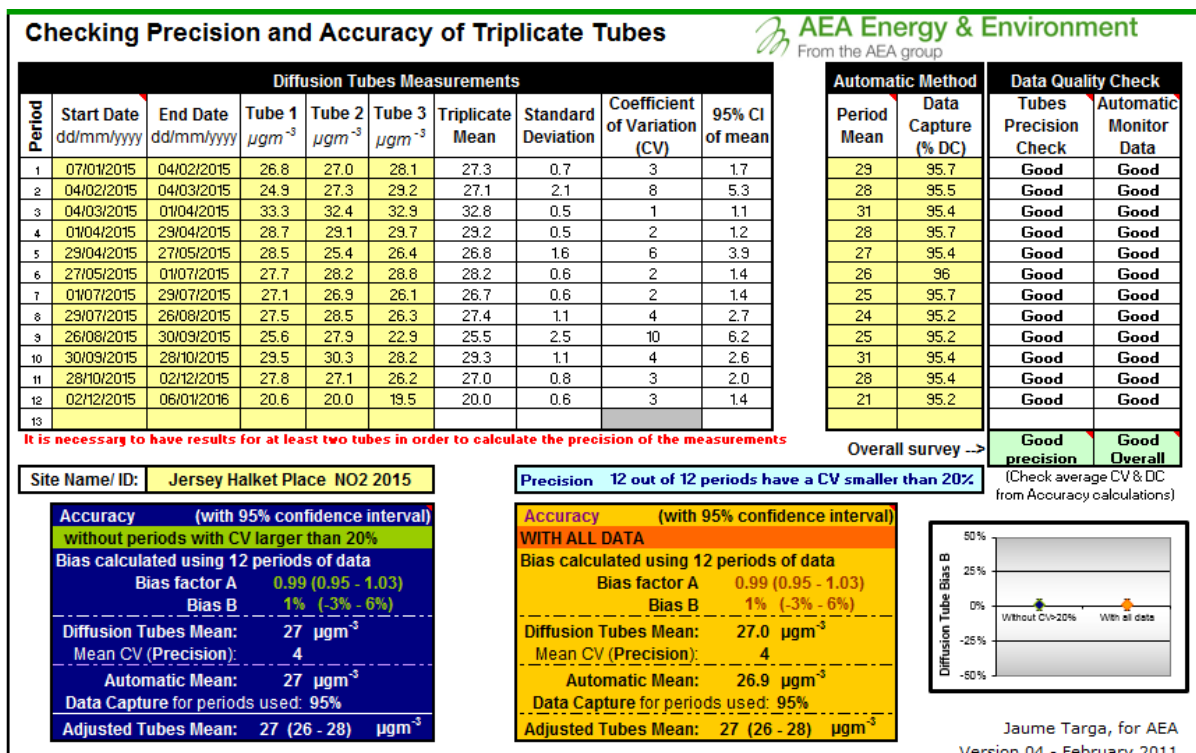
The diffusion tube annual mean concentrations measured at the other (non-co-located) sites can be adjusted for the diffusion tube over/under-read by application of a bias adjustment factor, calculated as follows.

$$\text{Bias adjustment factor} = C / D$$

Where D and C are the annual mean NO<sub>2</sub> concentrations as measured using diffusion tubes and the automatic analyser respectively, as above.

These calculations were carried out using a spreadsheet tool developed by Ricardo Energy & Environment (at that time trading as AEA Energy & Environment): Figure A3- 1, see below. This spreadsheet shows the diffusion tube concentrations to one decimal place as reported by the analyst – but given the uncertainty on diffusion tube measurements, it is only considered valid to report to the nearest integer in the report, except at the sites with lowest concentrations.

Figure A3- 1 Precision and bias spreadsheet showing Halkett Place dataset





## Appendix 4 - BTEX diffusion tubes: Monthly dataset and annual means 1997 - 2016

Figures in red are results less than the analytical limit of detection. They have been treated as ½ LoD for calculation purposes. Results are supplied in units of parts per billion (ppb) and converted.

**Table A4- 1 Monthly mean hydrocarbon concentrations,  $\mu\text{g m}^{-3}$  – Le Bas Centre**

| Le Bas Centre  | Benzene     | Toluene    | Ethylbenzene | m+p-xylene  | o-xylene    |
|----------------|-------------|------------|--------------|-------------|-------------|
| 06/01/2016     | 1.34        | 2.74       | 0.71         | 2.09        | 1.06        |
| 03/02/2016     | 1           | 2.11       | 0.54         | 1.84        | 0.81        |
| 02/03/2016     | 0.8         | 1.81       | 0.46         | 1.67        | 0.66        |
| 30/03/2016     | 0.78        | 2.26       | 0.5          | 1.61        | 0.71        |
| 27/04/2016     | 0.55        | 2.06       | 0.43         | 1.6         | 0.73        |
| 25/05/2016     | 0.96        | 2.16       | 0.59         | 1.77        | 0.81        |
| 29/06/2016     | 1.35        | 2.47       | 0.74         | 2.21        | 0.96        |
| 27/07/2016     | 0.47        | 2.19       | 0.57         | 1.71        | 0.75        |
| 24/08/2016     | 0.62        | 2.65       | 0.62         | 1.97        | 0.87        |
| 28/09/2016     |             |            |              |             |             |
| 26/10/2016     |             |            |              |             |             |
| 30/11/2016     | 1.83        | 4.76       | 1.29         | 4.04        | 1.74        |
| <b>Average</b> | <b>0.74</b> | <b>1.8</b> | <b>0.46</b>  | <b>1.44</b> | <b>0.65</b> |

October and November tubes were returned from Jersey with their cap missing: the results are therefore invalid.

**Table A4- 2 Monthly mean hydrocarbon concentrations,  $\mu\text{g m}^{-3}$  – Halkett Place**

| Halkett Place  | Benzene     | Toluene     | Ethylbenzene | m+p-xylene  | o-xylene    |
|----------------|-------------|-------------|--------------|-------------|-------------|
| 06/01/2016     | 0.9         | 1.09        | 0.36         | 0.85        | 0.5         |
| 03/02/2016     | 0.86        | 2.25        | 0.5          | 1.66        | 0.73        |
| 02/03/2016     | 0.94        | 2.43        | 0.6          | 2.26        | 0.96        |
| 30/03/2016     | 0.9         | 2.71        | 1.23         | 2.6         | 1.14        |
| 27/04/2016     | 0.76        | 2.99        | 0.66         | 2.18        | 0.98        |
| 25/05/2016     | 1.06        | 3.6         | 0.87         | 2.59        | 1.15        |
| 29/06/2016     | 1.08        | 3.38        | 0.82         | 2.45        | 1.09        |
| 27/07/2016     | 0.72        | 3.14        | 0.84         | 2.68        | 1.13        |
| 24/08/2016     | 0.71        | 3.24        | 0.84         | 2.96        | 1.14        |
| 28/09/2016     | 0.95        | 2.69        | 0.66         | 1.91        | 0.75        |
| 26/10/2016     | 0.96        | 2.96        | 0.83         | 2.28        | 0.94        |
| 30/11/2016     | 1.4         | 4.39        | 0.92         | 3.07        | 1.31        |
| <b>Average</b> | <b>0.94</b> | <b>2.91</b> | <b>0.76</b>  | <b>2.29</b> | <b>0.99</b> |

**Table A4- 3 Monthly mean hydrocarbon concentrations,  $\mu\text{g m}^{-3}$  – Airport Fence**

| Airport Fence  | Benzene    | Toluene     | Ethylbenzene | m+p-xylene  | o-xylene    |
|----------------|------------|-------------|--------------|-------------|-------------|
| 06/01/2016     | 0.54       | 0.65        | 0.27         | 0.4         | 0.27        |
| 03/02/2016     | 0.78       | 1.61        | 0.38         | 0.99        | 0.51        |
| 02/03/2016     | 0.63       | 1.43        | 0.27         | 0.85        | 0.38        |
| 30/03/2016     | -          | -           | -            | -           | -           |
| 27/04/2016     | 0.41       | 1           | 0.27         | 0.53        | 0.29        |
| 25/05/2016     | 0.49       | 1.5         | 0.23         | 0.67        | 0.31        |
| 29/06/2016     | 0.27       | 0.76        | 0.27         | 0.42        | 0.35        |
| 27/07/2016     | 0.27       | 1.22        | 0.34         | 0.68        | 0.27        |
| 24/08/2016     | 0.36       | 1.3         | 0.22         | 0.68        | 0.29        |
| 28/09/2016     | 0.78       | 1.98        | 0.35         | 0.83        | 0.4         |
| 26/10/2016     |            |             |              |             |             |
| 30/11/2016     |            |             |              |             |             |
| <b>Average</b> | <b>0.5</b> | <b>1.27</b> | <b>0.24</b>  | <b>0.67</b> | <b>0.31</b> |

April tube didn't analyse correctly

November and December tubes were returned from Jersey with their cap missing: the results are therefore invalid.

**Table A4- 4 Monthly mean hydrocarbon concentrations,  $\mu\text{g m}^{-3}$  – Hansford Lane**

| Hansford Lane  | Benzene    | Toluene     | Ethylbenzene | m+p-xylene  | o-xylene    |
|----------------|------------|-------------|--------------|-------------|-------------|
| 06/01/2016     | 0.75       | 2.32        | 0.97         | 3.6         | 1.47        |
| 03/02/2016     | 0.63       | 3           | 0.95         | 3.43        | 1.29        |
| 02/03/2016     | 0.69       | 2.93        | 1.36         | 5.18        | 2.06        |
| 30/03/2016     | 0.73       | 4.49        | 1.81         | 6.53        | 2.28        |
| 27/04/2016     | 0.48       | 3.67        | 1.53         | 5.75        | 2.07        |
| 25/05/2016     | 0.72       | 4.08        | 1.56         | 5.87        | 2.24        |
| 29/06/2016     |            |             |              |             |             |
| 27/07/2016     |            |             |              |             |             |
| 24/08/2016     |            |             |              |             |             |
| 28/09/2016     |            |             |              |             |             |
| 26/10/2016     |            |             |              |             |             |
| 30/11/2016     | 0.89       | 3.53        | 1.19         | 4.25        | 1.51        |
| <b>Average</b> | <b>0.7</b> | <b>3.44</b> | <b>1.34</b>  | <b>4.94</b> | <b>1.85</b> |

July, August, September missing on collection

October and November tubes were returned from Jersey with their cap missing: the results are therefore invalid.

**Table A4- 5 Monthly mean hydrocarbon concentrations,  $\mu\text{g m}^{-3}$  – Faux Bie**

| Faux Bie       | Benzene    | Toluene      | Ethylbenzene | m+p-xylene  | o-xylene    |
|----------------|------------|--------------|--------------|-------------|-------------|
| 06/01/2016     | 2.51       | 8.22         | 1.49         | 4.87        | 1.96        |
| 03/02/2016     | 1.17       | 7.07         | 1.36         | 4.65        | 1.84        |
| 02/03/2016     | 1.21       | 5.54         | 1.05         | 3.61        | 1.53        |
| 30/03/2016     | 1.32       | 10.25        | 1.63         | 5.66        | 2.03        |
| 27/04/2016     | 1.03       | 11.54        | 1.83         | 6.29        | 2.58        |
| 25/05/2016     | 2.83       | 12.95        | 2.13         | 6.52        | 2.64        |
| 29/06/2016     | 3.84       | 19.47        | 3.05         | 9.78        | 3.94        |
| 27/07/2016     | 2          | 18.57        | 2.72         | 8.91        | 3.6         |
| 24/08/2016     | 1.69       | 18.94        | 2.74         | 9.26        | 3.7         |
| 28/09/2016     |            |              |              |             |             |
| 26/10/2016     |            |              |              |             |             |
| 30/11/2016     | 1.42       | 7.3          | 1.22         | 4.51        | 1.76        |
| <b>Average</b> | <b>1.9</b> | <b>11.99</b> | <b>1.92</b>  | <b>6.41</b> | <b>2.56</b> |

October and November tubes were returned from Jersey with their cap missing: the results are therefore invalid.

**Table A4- 6 Monthly mean hydrocarbon concentrations,  $\mu\text{g m}^{-3}$  – Travel blank**

| Travel blank   | Benzene     | Toluene     | Ethylbenzene | m+p-xylene | o-xylene    |
|----------------|-------------|-------------|--------------|------------|-------------|
| 06/01/2016     | 0.07        | 0.12        | 0.1          | 0.11       | 0.2         |
| 03/02/2016     | 0.2         | 0.46        | 0.09         | 0.18       | 0.11        |
| 02/03/2016     | 0.07        | 0.03        | 0.02         | 0.15       | 0.04        |
| 30/03/2016     | 0.04        | 0.04        | 0.11         | 0.26       | 0.07        |
| 27/04/2016     | 0.2         | 0.26        | 0.06         | 0.1        | 0.05        |
| 25/05/2016     | 0.33        | 0.03        | 0.02         | 0.03       | 0.05        |
| 29/06/2016     | 0.1         | 0.04        | 0.02         | 0.03       | 0.16        |
| 27/07/2016     | 0.12        | 0.04        | 0.03         | 0.12       | 0.06        |
| 24/08/2016     | 0.07        | 0.06        | 0.02         | 0.05       | 0.03        |
| 28/09/2016     |             |             |              |            |             |
| 26/10/2016     |             |             |              |            |             |
| 30/11/2016     | 0.15        | 0           | 0.02         | 0          | 0.01        |
| <b>Average</b> | <b>0.14</b> | <b>0.11</b> | <b>0.05</b>  | <b>0.1</b> | <b>0.08</b> |

October and November tubes were returned from Jersey with their cap missing: the results are therefore invalid.

**Table A4- 7 Comparison of hydrocarbon concentrations, Jersey, 1997 – 2016**

|                      | Benzene              | Toluene              | Ethylbenzene         | m+p-xylene           | o-xylene             |
|----------------------|----------------------|----------------------|----------------------|----------------------|----------------------|
|                      | $\mu\text{g m}^{-3}$ | $\mu\text{g m}^{-3}$ | $\mu\text{g m}^{-3}$ | $\mu\text{g m}^{-3}$ | $\mu\text{g m}^{-3}$ |
| <b>Le Bas Centre</b> |                      |                      |                      |                      |                      |
| 1997                 | 9.1                  | 17.2                 | 5.3                  | 9.7                  | 4.4                  |
| 1998                 | 7.5                  | 16.1                 | 3.1                  | 8.4                  | 4                    |
| 1999                 | 3.6                  | 11.1                 | 2.2                  | 5.7                  | 2.7                  |
| 2000                 | 2.9                  | 12.6                 | 3.1                  | 8.4                  | 3.1                  |
| 2001                 | 2.6                  | 13.4                 | 2.7                  | 7.5                  | 3.1                  |
| 2002                 | 2                    | 8                    | 1.8                  | 5.7                  | 2.2                  |
| 2003                 | 1.3                  | 8                    | 1.8                  | 4.9                  | 1.8                  |
| 2004                 | 1.3                  | 6.6                  | 3.3                  | 3.9                  | 1.4                  |
| 2005                 | 1.3                  | 5.3                  | 1.1                  | 3.4                  | 1.2                  |
| 2006                 | 1.5                  | 4.4                  | 0.8                  | 2.8                  | 1                    |
| 2007                 | 1.5                  | 6.5                  | 1.3                  | 3.2                  | 1.3                  |
| 2008                 | 1.4                  | 5.6                  | 1.4                  | 3.7                  | 1.4                  |
| 2009                 | 1.4                  | 5.4                  | 1.4                  | 3.9                  | 1.5                  |
| 2010                 | 1                    | 3.6                  | 0.9                  | 2.5                  | 1.2                  |
| 2011                 | 1                    | 5.1                  | 1.2                  | 2.6                  | 0.9                  |
| 2012                 | 0.6                  | 3                    | 0.8                  | 1.9                  | 0.7                  |
| 2013                 | 0.7                  | 2.4                  | 0.8                  | 2.0                  | 0.7                  |
| 2014                 | 0.5                  | 2.1                  | 0.5                  | 1.7                  | 0.6                  |
| 2015                 | 0.9                  | 2.6                  | 0.6                  | 2.1                  | 0.9                  |
| 2016                 | 1                    | 2.5                  | 0.6                  | 2.1                  | 0.9                  |
| <b>Halkett Place</b> |                      |                      |                      |                      |                      |
| 2012                 | 0.8                  | 3.1                  | 0.8                  | 2                    | 0.8                  |
| 2013                 | 0.8                  | 2.9                  | 0.7                  | 2.2                  | 0.9                  |
| 2014                 | 0.7                  | 2.9                  | 0.6                  | 2.1                  | 0.9                  |
| 2015                 | 0.7                  | 2.3                  | 1.0                  | 2.0                  | 0.8                  |
| 2016                 | 0.9                  | 2.9                  | 0.8                  | 2.3                  | 1                    |
| <b>Airport Fence</b> |                      |                      |                      |                      |                      |
| 2012                 | 0.2                  | 0.6                  | 0.4                  | 0.4                  | 0.2                  |
| 2013                 | 0.4                  | 1.0                  | 0.2                  | 0.4                  | 0.2                  |
| 2014                 | 0.3                  | 1.3                  | 0.3                  | 0.8                  | 0.3                  |
| 2015                 | 0.5                  | 1.4                  | 0.6                  | 1.1                  | 0.5                  |
| 2016                 | 0.5                  | 1.3                  | 0.2                  | 0.7                  | 0.3                  |
| <b>Hansford Lane</b> |                      |                      |                      |                      |                      |
| 2004                 | 1                    | 16.1                 | 7.3                  | 8.5                  | 2                    |
| 2005                 | 1                    | 3.7                  | 2.1                  | 7.1                  | 2.2                  |
| 2006                 | 1.2                  | 4.8                  | 1.3                  | 5.1                  | 1.6                  |
| 2007                 | 1.1                  | 6.7                  | 2.2                  | 6.4                  | 2.2                  |
| 2008                 | 1                    | 4                    | 2.2                  | 7.6                  | 2.2                  |
| 2009                 | 1.1                  | 4.9                  | 2                    | 8.5                  | 2.4                  |

**Table A4- 8 (Continued) Comparison of hydrocarbon concentrations, Jersey, 1997 – 2016**

|                 | Benzene              | Toluene              | Ethylbenzene         | m+p-xylene           | o-xylene             |
|-----------------|----------------------|----------------------|----------------------|----------------------|----------------------|
|                 | $\mu\text{g m}^{-3}$ | $\mu\text{g m}^{-3}$ | $\mu\text{g m}^{-3}$ | $\mu\text{g m}^{-3}$ | $\mu\text{g m}^{-3}$ |
| 2010            | 0.8                  | 2.6                  | 2                    | 7.1                  | 2.5                  |
| 2011            | 0.6                  | 1.9                  | 2                    | 6.5                  | 2                    |
| 2012            | 0.3                  | 1.1                  | 0.7                  | 2.3                  | 0.8                  |
| 2013            | 0.4                  | 2.6                  | 1.9                  | 5.2                  | 1.8                  |
| 2014            | 0.3                  | 2.1                  | 1.1                  | 3.7                  | 1.2                  |
| 2015            | 0.5                  | 2.9                  | 1.4                  | 5.3                  | 1.8                  |
| 2016            |                      |                      |                      |                      |                      |
| <b>Faux Bie</b> |                      |                      |                      |                      |                      |
| 2009            | 1.3                  | 5.5                  | 1.1                  | 3.4                  | 1.3                  |
| 2010            | 1.8                  | 6.7                  | 1.4                  | 4                    | 1.6                  |
| 2011            | 1.3                  | 6.2                  | 1                    | 3.6                  | 1.3                  |
| 2012            | 0.8                  | 4.5                  | 0.7                  | 2.3                  | 0.8                  |
| 2013            | 1.4                  | 6.7                  | 1.0                  | 3.7                  | 1.4                  |
| 2014            | 1.1                  | 8.7                  | 1.4                  | 5.5                  | 2.0                  |
| 2015            | 1.6                  | 10.3                 | 1.8                  | 6.4                  | 2.5                  |
| 2016            | 1.9                  | 12                   | 1.9                  | 6.4                  | 2.6                  |



Ricardo  
Energy & Environment

The Gemini Building  
Fermi Avenue  
Harwell  
Didcot  
Oxfordshire  
OX11 0QR  
United Kingdom

t: +44 (0)1235 753000  
e: [enquiry@ricardo.com](mailto:enquiry@ricardo.com)

[ee.ricardo.com](http://ee.ricardo.com)